

**Extracted from Approved Tai Tong Outline Zoning Plan No. S/YL-TT/20**

N.T.S	<b>Location Plan</b>	<b>Goldrich Planners &amp; Surveyors Ltd.</b>
<b>June 2025</b>	Lots 842(part), 843(part), 844(part), 845(part) and 848(part) in DD.117	<b>Plan 1 ( P 25042 )</b>

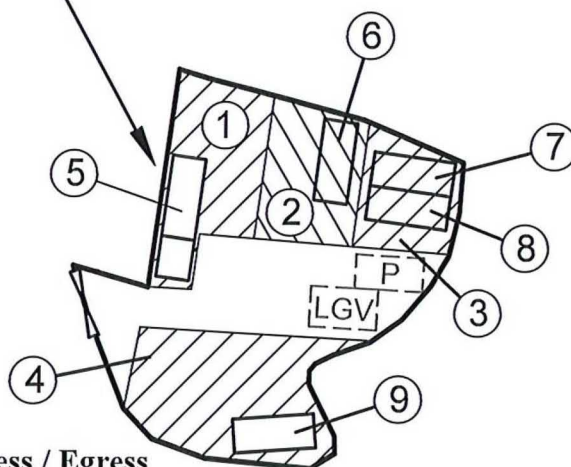
(摘錄自申請人於 13. 8. 2025 呈交的申請書)  
(Extract from Applicant's  
Submission of 13.8.2025)

參考編號  
REFERENCE No.  
A/YL-TT/727

繪圖 DRAWING  
A-1



## Application Site



### Legend



Vehicular Ingress / Egress



Parking space for private cars  
(5m (L) x 2.5m (W))



Parking space for light goods vehicle  
(5m (L) x 3m (W))

**Site Area(about): 511m<sup>2</sup>**

No.	Uses	Floor Area (about)	Covered Area (about)	Storeys	Height
1	Canopy	73 m <sup>2</sup>	73 m <sup>2</sup>	1	4m
2	Canopy	72 m <sup>2</sup>	72 m <sup>2</sup>	1	4m
3	Canopy	56 m <sup>2</sup>	56 m <sup>2</sup>	1	4m
4	Canopy	116 m <sup>2</sup>	116 m <sup>2</sup>	1	4m
5	Ancillary Office with Toilet (not covered by canopy)	23 m <sup>2</sup>	23 m <sup>2</sup>	1	4m
6	Animal Boarding Establishment (covered by canopy)	(15m <sup>2</sup> under structure 2)	(15m <sup>2</sup> under structure 2)	1	4m
7	Storeroom (covered by canopy)	(15m <sup>2</sup> under structure 3)	(15m <sup>2</sup> under structure 3)	1	4m
8	Animal Boarding Establishment (covered by canopy)	(15m <sup>2</sup> under structure 3)	(15m <sup>2</sup> under structure 3)	1	4m
9	Animal Boarding Establishment (not covered by canopy)	15 m <sup>2</sup>	15 m <sup>2</sup>	1	4m
Total		<u>355 m<sup>2</sup></u>	<u>355 m<sup>2</sup></u>		

**1:500**

### Layout Plan

**Goldrich Planners &  
Surveyors Ltd.**

**September 2025**

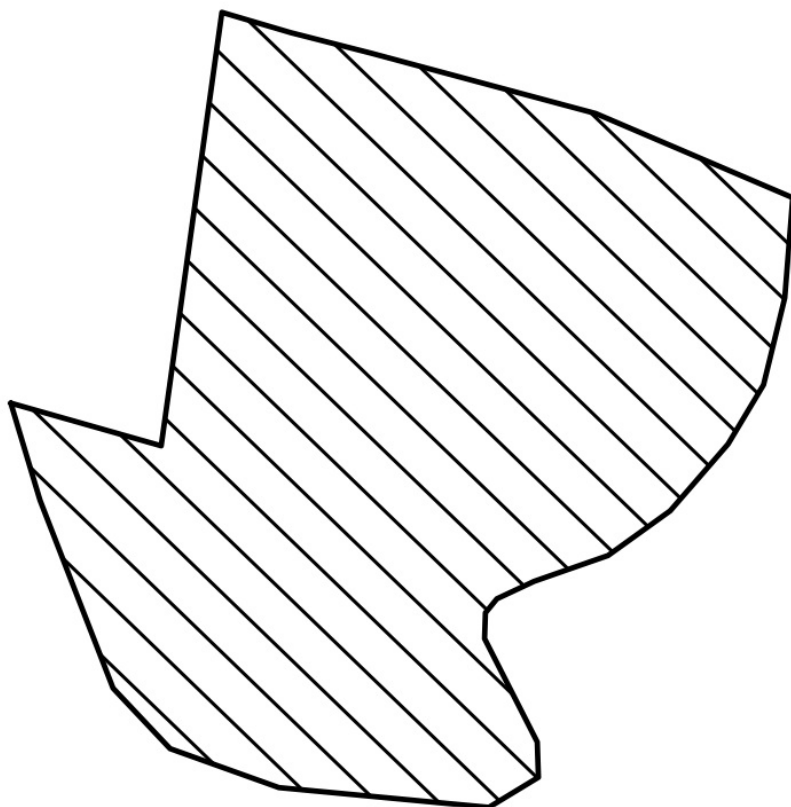
**Lots 842(part), 843(part), 844(part),  
845(part) and 848(part) in DD.117**

**Plan 3a  
( P 25042 )**

(摘錄自申請人於 22.9.2025 呈交的進一步資料)  
(Extract from Applicant's Further  
Information Submitted on 22.9.2025)

參考編號  
REFERENCE No.  
**A/YL-TT/727**

繪圖 **DRAWING**  
**A-2**

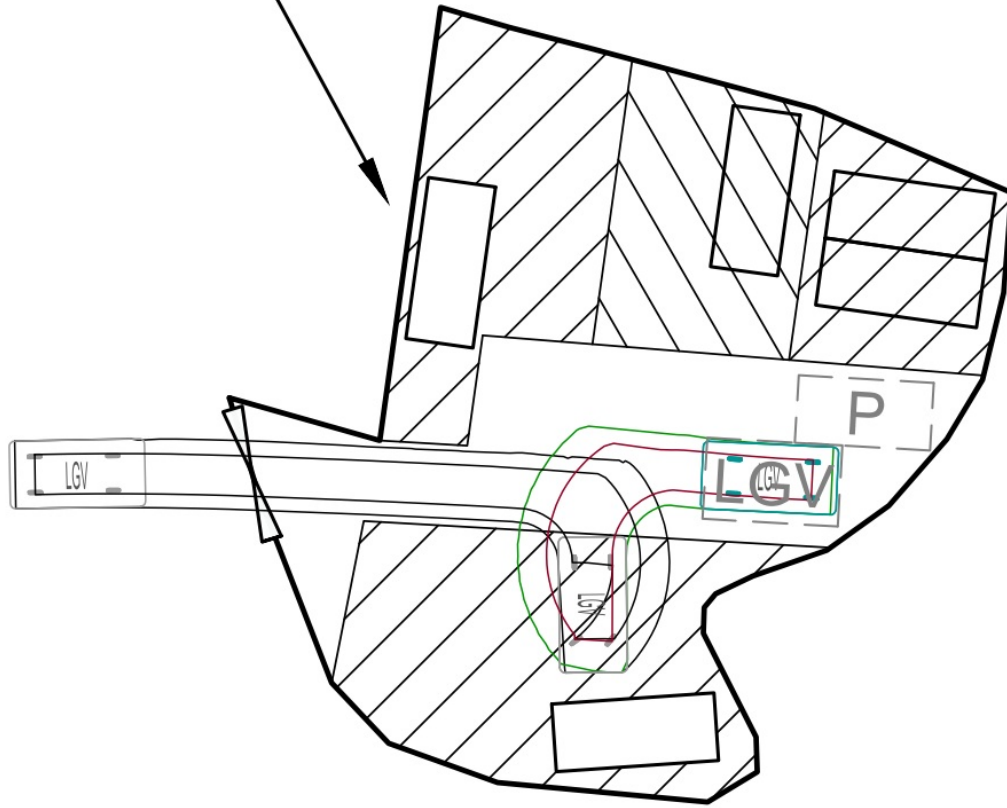


**This application serves to regularize the existing  
hard paving of site of about 0.2m in depth  
(from 19.6mPD to 19.8mPD)  
to provide a solid ground for erection of  
structures and vehicle maneuvering**

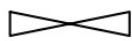
<b>N.T.S</b>	<b>Plan Showing Existing Filling of Land</b>  Lots 842(part), 843(part), 844(part), 845(part) and 848(part) in DD.117	<b>Goldrich Planners &amp; Surveyors Ltd.</b>
<b>July 2025</b>		<b>Plan 5 ( P 25042 )</b>



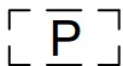
## Application Site



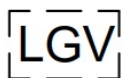
## Legend



**Vehicular Ingress / Egress**



**Parking space for private cars  
(5m (L) x 2.5m (W))**



**Parking space for light goods vehicles  
(5m (L) x 3m (W))**



**Light goods Vehicle  
(5m (L) x 2.5m (W))**

**1:250**

**July 2025**

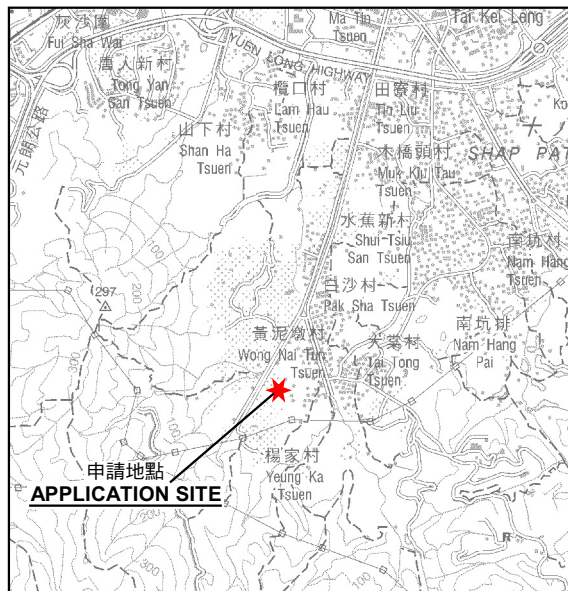
### Swept Path Analysis

**Lots 842(part), 843(part), 844(part),  
845(part) and 848(part) in DD.117**

**Goldrich Planners &  
Surveyors Ltd.**

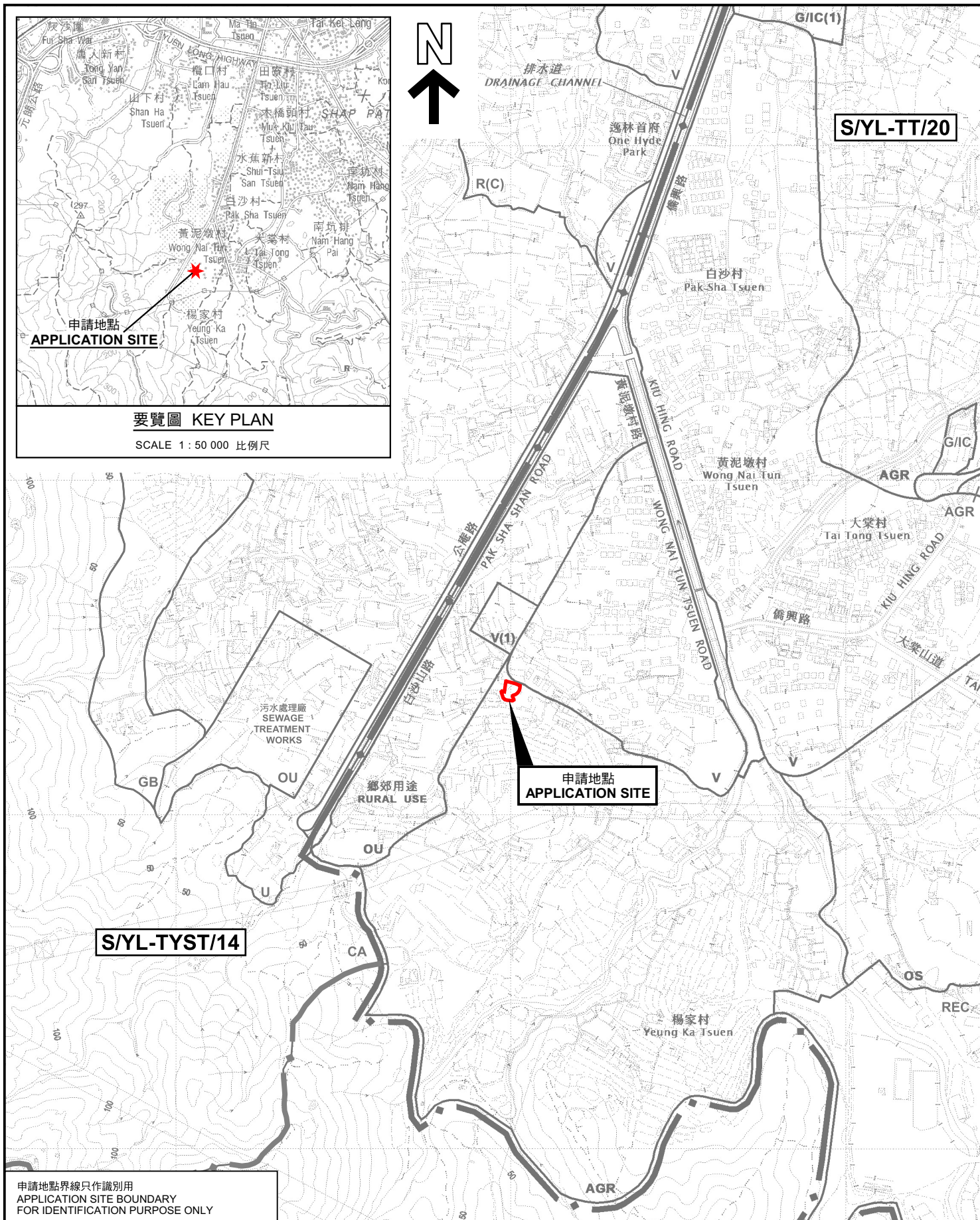
**Plan 4  
( P 25042 )**





要覽圖 KEY PLAN

SCALE 1 : 50 000 比例尺



申請地點界線只作識別用  
APPLICATION SITE BOUNDARY  
FOR IDENTIFICATION PURPOSE ONLY

位置圖 LOCATION PLAN

擬議臨時動物寄養所連附屬設施及相關填土工程(為期5年)  
元朗大棠丈量約份第117約地段第842號(部份)、第843號(部份)、  
第844號(部份)、第845號(部份)及第848號(部份)

PROPOSED TEMPORARY ANIMAL BOARDING ESTABLISHMENT  
WITH ANCILLARY FACILITIES AND ASSOCIATED FILLING OF LAND  
FOR A PERIOD OF 5 YEARS  
LOTS 842 (PART), 843 (PART), 844 (PART), 845 (PART) AND 848 (PART)  
IN D.D.117, TAI TONG, YUEN LONG

SCALE 1 : 7 500 比例尺

米 100 0 100 200 300 米  
METRES

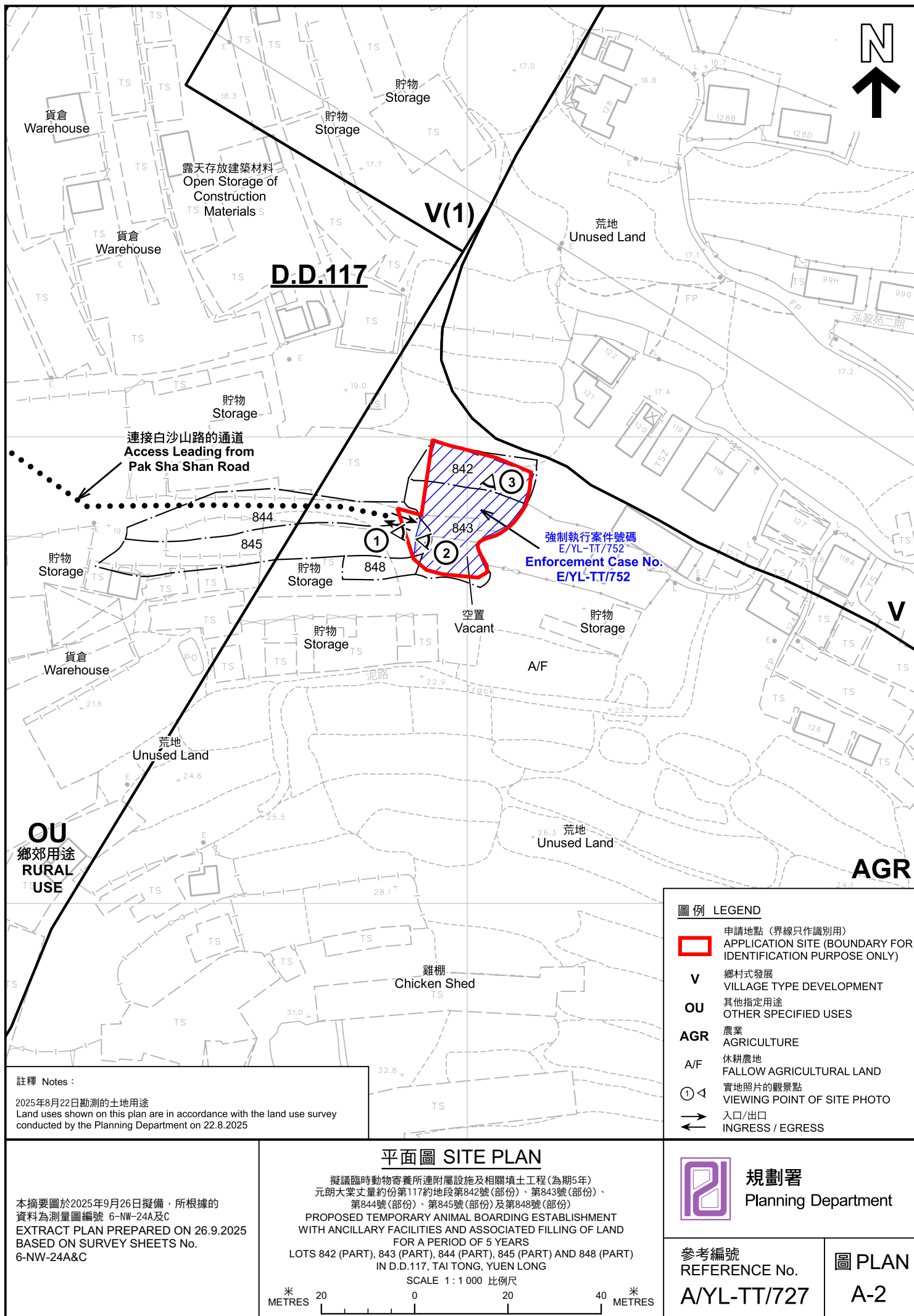


規劃署  
Planning Department

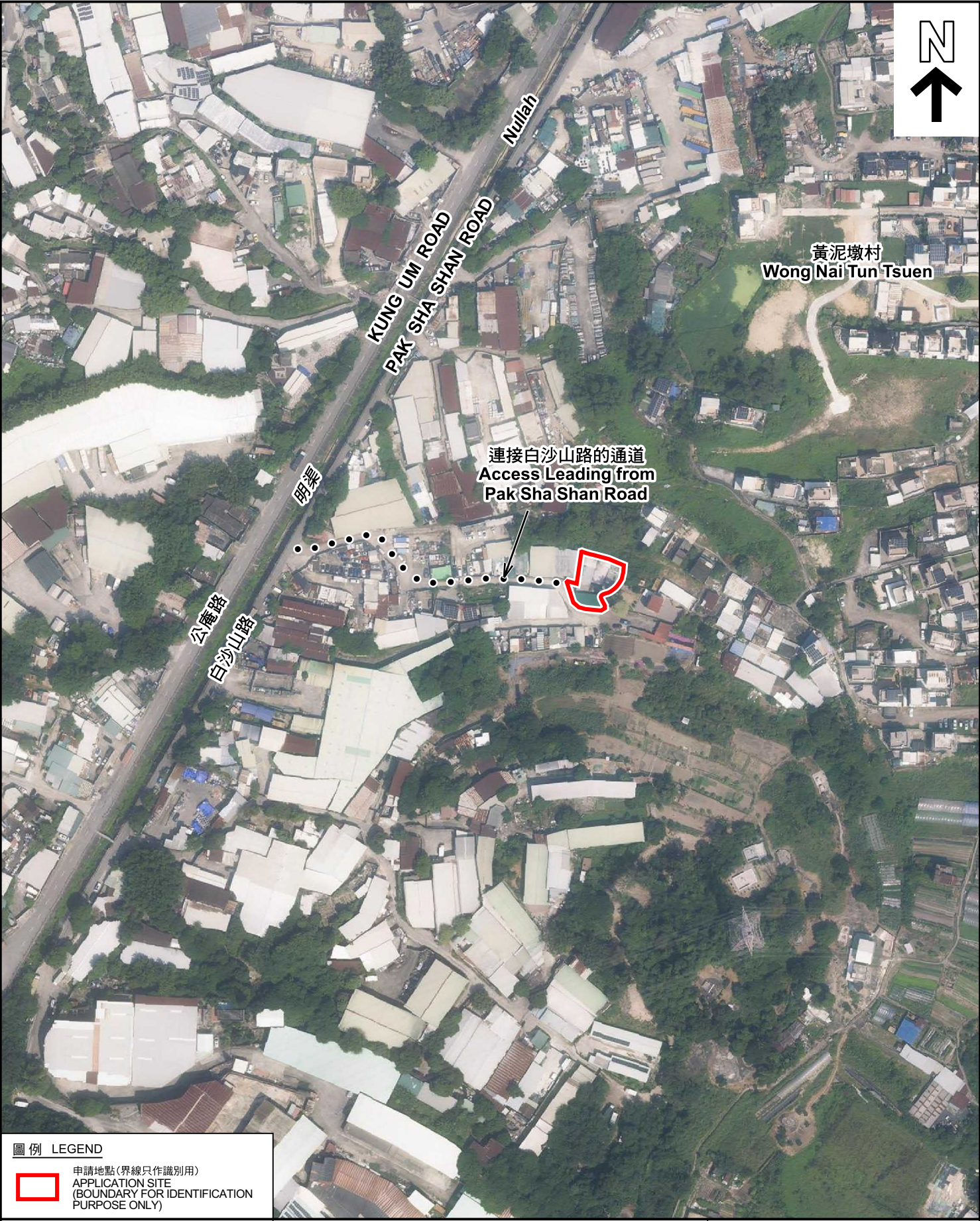
參考編號  
REFERENCE No.  
A/YL-TT/727

圖 PLAN  
A-1

本摘要圖於2025年9月19日擬備，  
所根據的資料為於2023年12月5日  
核准的分區計劃大綱圖編號 S/YL-TT/20  
EXTRACT PLAN PREPARED ON 19.9.2025  
BASED ON OUTLINE ZONING PLAN No.  
S/YL-TT/20 APPROVED ON 5.12.2023







圖例 LEGEND



申請地點(界線只作識別用)  
APPLICATION SITE  
(BOUNDARY FOR IDENTIFICATION  
PURPOSE ONLY)

本摘要圖於2025年9月19日擬備，所根據的資料為地政總署於2024年10月10日拍得的航攝照片編號 E230142C  
EXTRACT PLAN PREPARED ON 19.9.2025  
BASED ON AERIAL PHOTO No.  
E230142C TAKEN ON 10.10.2024  
BY LANDS DEPARTMENT

航攝照片 AERIAL PHOTO

擬議臨時動物寄養所連附屬設施及相關填土工程(為期5年)  
元朗大堂丈量約份第117約地段第842號(部份)、第843號(部份)、  
第844號(部份)、第845號(部份)及第848號(部份)  
PROPOSED TEMPORARY ANIMAL BOARDING ESTABLISHMENT  
WITH ANCILLARY FACILITIES AND ASSOCIATED FILLING OF LAND  
FOR A PERIOD OF 5 YEARS  
LOTS 842 (PART), 843 (PART), 844 (PART), 845 (PART) AND 848 (PART)  
IN D.D.117, TAI TONG, YUEN LONG



規劃署  
Planning Department

參考編號  
REFERENCE No.  
A/YL-TT/727

圖 PLAN  
A-3



1



2



3



## 實地照片 SITE PHOTOS

本圖於2025年9月19日擬備，所根據的資料為攝於2025年8月28日的實地照片  
PLAN PREPARED ON 19.9.2025  
BASED ON SITE PHOTOS  
TAKEN ON 28.8.2025

擬議臨時動物寄養所連附屬設施及相關填土工程(為期5年)  
元朗大棠丈量約份第117約地段第842號(部份)、第843號(部份)、  
第844號(部份)、第845號(部份)及第848號(部份)  
PROPOSED TEMPORARY ANIMAL BOARDING ESTABLISHMENT  
WITH ANCILLARY FACILITIES AND ASSOCIATED FILLING OF LAND  
FOR A PERIOD OF 5 YEARS  
LOTS 842 (PART), 843 (PART), 844 (PART), 845 (PART) AND 848 (PART)  
IN D.D.117, TAI TONG, YUEN LONG



規劃署  
Planning Department

參考編號  
REFERENCE No.  
A/YL-TT/727

圖 PLAN  
A-4