

DEVELOPMENT PARAMETERS

| | | | |
|-----------------------|---|----------------------|---------|
| APPLICATION SITE AREA | : | 3,221 m ² | (ABOUT) |
| COVERED AREA | : | 60 m ² | (ABOUT) |
| UNCOVERED AREA | : | 3,161 m ² | (ABOUT) |

| | | |
|---------------|--------|---------|
| PLOT RATIO | : 0.02 | (ABOUT) |
| SITE COVERAGE | : 1.9% | (ABOUT) |

| | |
|------------------|-----------------------------|
| NO. OF STRUCTURE | : 2 |
| DOMESTIC GFA | : NOT APPLICABLE |
| NON-DOMESTIC GFA | : 60 m ² (ABOUT) |
| TOTAL GFA | : 60 m ² (ABOUT) |

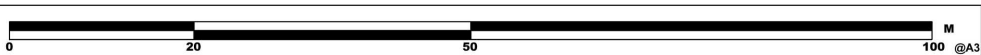
BUILDING HEIGHT : 4 m (NOT MORE THAN)
NO. OF STOREY : 1 (NOT MORE THAN)

| STRUCTURE | USE | COVERED AREA | GFA | BUILDING HEIGHT |
|-----------|-----------------------------|---------------------------------|---------------------------------|--------------------------------|
| A | SHROFF AND ANCILLARY OFFICE | 40 m ² (ABOUT) | 40 m ² (ABOUT) | 4 m (NOT MORE THAN) (1-STOREY) |
| B | STORE ROOM | 20 m ² (ABOUT) | 20 m ² (ABOUT) | 4 m (NOT MORE THAN) (1-STOREY) |
| | TOTAL | 60 m² (ABOUT) | 60 m² (ABOUT) | |

PARKING PROVISIONS

NO. OF PRIVATE CAR PARKING SPACE : 45
DIMENSIONS OF PARKING SPACE : 5 m (L) X 2.5 m (W)

NO. OF LIGHT GOODS VEHICLES PARKING SPACE : 15
DIMENSIONS OF PARKING SPACE : 7 m (L) X 3.5 m (W)



• ALL DIMENSIONS ARE IN MILLIMETER EXCEPT OTHERWISE NOTED

• DO NOT SCALE DRAWING

LEGEND



APPLICATION SITE



STRUCTURE



PARKING SPACE
(Private Car)
2.5 m (W) X 5 m (L)



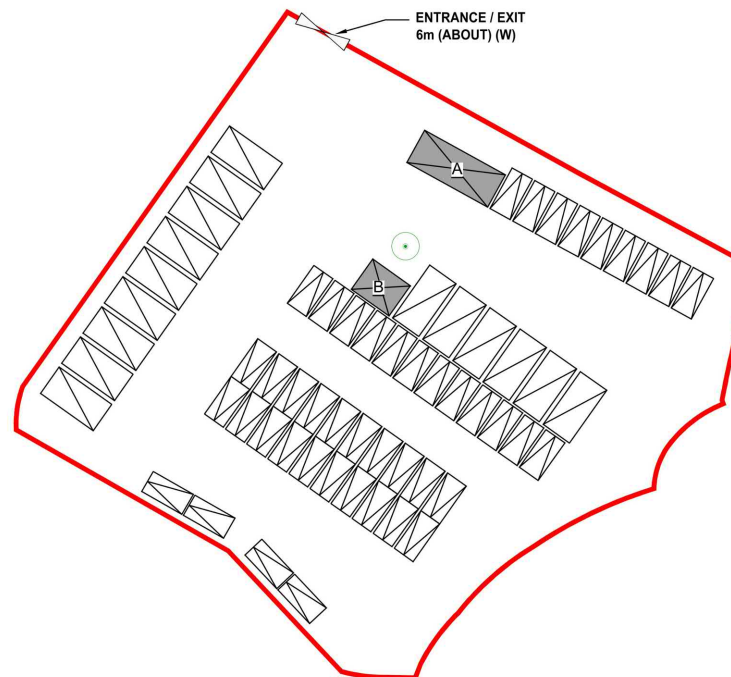
PARKING SPACE
(Light Goods Vehicles)
3.5 m (W) X 7 m (L)



ENTRANCE / EXIT



EXISTING TREE



| | | |
|---|-------------|-------------|
| — | LAYOUT PLAN | 19 JUN 2025 |
|---|-------------|-------------|

| | | | |
|----------|--|--|--|
| REVISION | | | |
|----------|--|--|--|

| | | |
|-------|----|------------------|
| drawn | CY | - |
| | | DATE 19 JUN 2025 |

| | | |
|---------|---|------|
| checked | - | DATE |
|---------|---|------|

| | | |
|----------|---|------|
| approved | - | - |
| | | DATE |

| | |
|-------------------|--|
| contract no. = | |
| project no. 00108 | |

TITLE :

PROPOSED TEMPORARY PUBLIC VEHICLE PARK
(EXCLUDING CONTAINER VEHICLE) AND
ASSOCIATED FILLING OF LAND FOR A PERIOD OF 3
YEARS

SITE LOCATION :
LOTS 1054 S.B AND 1056 S.B (PART) IN D.D. 106,
SHEK KONG, YUEN LONG, NEW TERRITORIES

drawing title.
LAYOUT PLAN

| | | |
|-------------|------|-------|
| drawing no. | rev. | scale |
|-------------|------|-------|

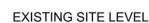
| | | |
|--------|---|--------|
| PLAN 1 | - | N.T.S. |
|--------|---|--------|

| | | | |
|--|--|--|--|
| | | | |
|--|--|--|--|

(摘錄自申請人於 8.10.2025 呈交的進一步資料)
(Extract from Applicant's Further
Information Submitted on 8.10.2025)

參考編號
REFERENCE No.
A/YL-SK/430

繪圖
DRAWING
A - 1

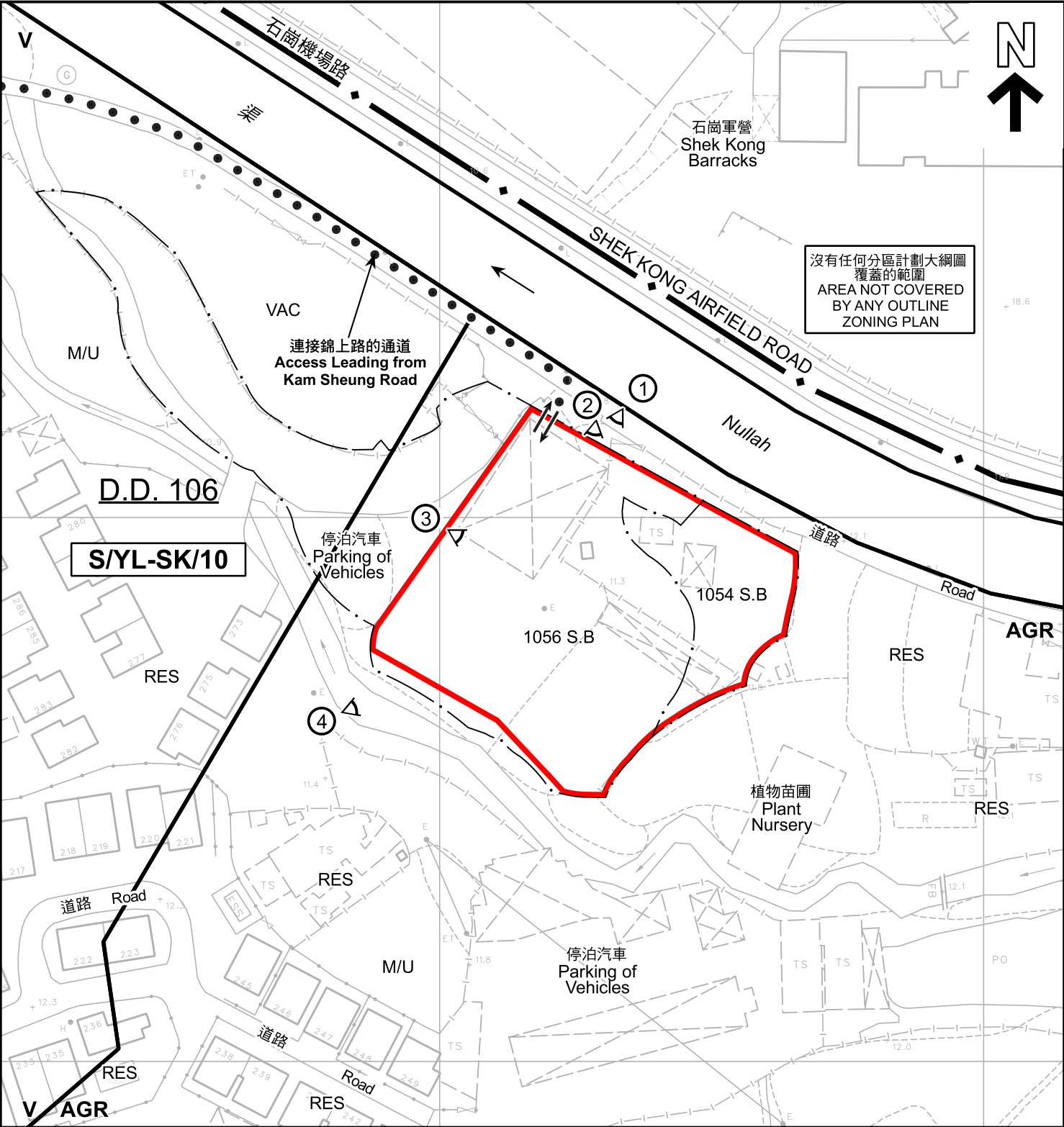


SITE LEVELS ARE FOR INSICATIVE PURPOSE ONLY



| | |
|--|---|
| APPLICATION SITE AREA | : 3,221 m ² (ABOUT) |
| FILLING OF LAND AREA | : 3,193 m ² (ABOUT) (including 82 m ² of existing hard ground for regularisation) |
| LAND FILLING DEPTH | : NOT MORE THAN 0.6 m (including 0.2m of concrete surface) |
| PROPOSED SITE LEVEL | : +11.9 mPD (ABOUT) |
| MATERIAL OF FILLING FOR SITE FORMATION | : SOIL & CONCRETE |

繪圖
DRAWING
A - 2



圖例 LEGEND

- 申請地點 (界線只作識別用)
APPLICATION SITE (BOUNDARY FOR IDENTIFICATION PURPOSE ONLY)
- V** 鄉村式發展
VILLAGE TYPE DEVELOPMENT
- AGR** 農業
AGRICULTURE

- M/U** 荒地
UNUSED LAND
- RES** 住用構築物
RESIDENTIAL STRUCTURES
- VAC** 空置
VACANT

- ①** 實地照片的觀景點
VIEWING POINT OF SITE PHOTO
- 入口/出口
INGRESS / EGRESS

註釋 Note :
2025年7月28日勘測的土地用途
Land uses shown on this plan are in accordance with the land use survey conducted by the Planning Department on 28.7.2025

平面圖 SITE PLAN

本摘要圖於2025年11月12日擬備，
所根據的資料為測量圖編號6-NE-13C
EXTRACT PLAN PREPARED ON 12.11.2025
BASED ON SURVEY SHEET No. 6-NE-13C

擬議臨時公眾停車場 (貨櫃車除外) 及相關的填土工程 (為期3年)
新界元朗石崗丈量約份第106約地段第1054號B分段及第1056號B分段 (部分)
PROPOSED TEMPORARY PUBLIC VEHICLE PARK (EXCLUDING CONTAINER VEHICLE) AND ASSOCIATED FILLING OF LAND FOR A PERIOD OF 3 YEARS
LOTS 1054 S.B. AND 1056 S.B. (PART) IN D.D. 106, SHEK KONG, YUEN LONG, NEW TERRITORIES

SCALE 1:1 000 比例尺

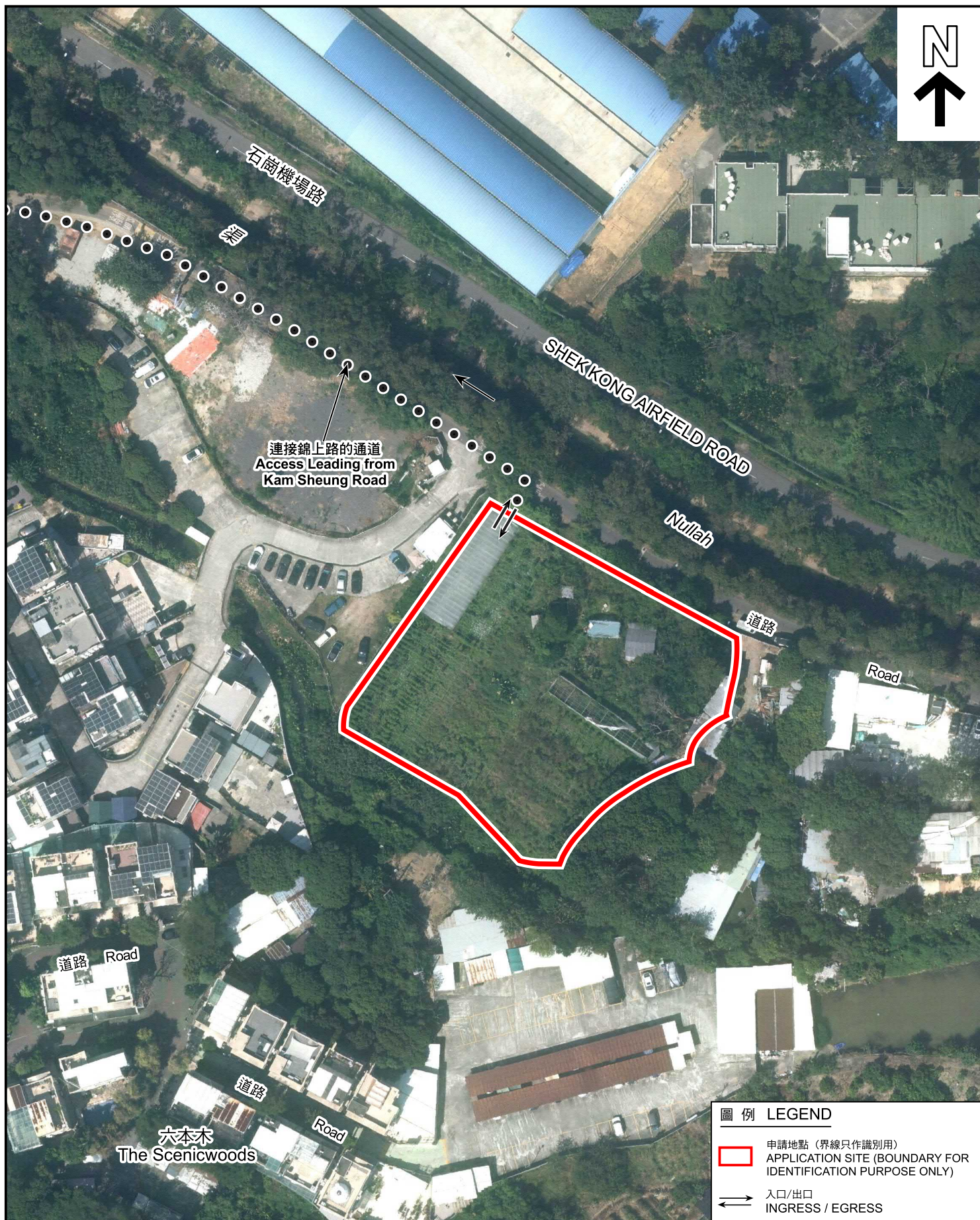
米 20 0 20 40 米
METRES



規劃署
Planning Department

參考編號
REFERENCE No.
A/YL-SK/430

圖 PLAN
A-2



圖例 LEGEND

-  申請地點（界線只作識別用）
APPLICATION SITE (BOUNDARY FOR IDENTIFICATION PURPOSE ONLY)
-  入口/出口
INGRESS / EGRESS

航攝照片 AERIAL PHOTO

擬議臨時公眾停車場（貨櫃車除外）及相關的填土工程（為期3年）
新界元朗石崗丈量約份第106約地段第1054號B分段及第1056號B分段（部分）
PROPOSED TEMPORARY PUBLIC VEHICLE PARK (EXCLUDING CONTAINER VEHICLE) AND ASSOCIATED FILLING OF LAND FOR A PERIOD OF 3 YEARS
LOTS 1054 S.B. AND 1056 S.B (PART) IN D.D. 106, SHEK KONG, YUEN LONG, NEW TERRITORIES



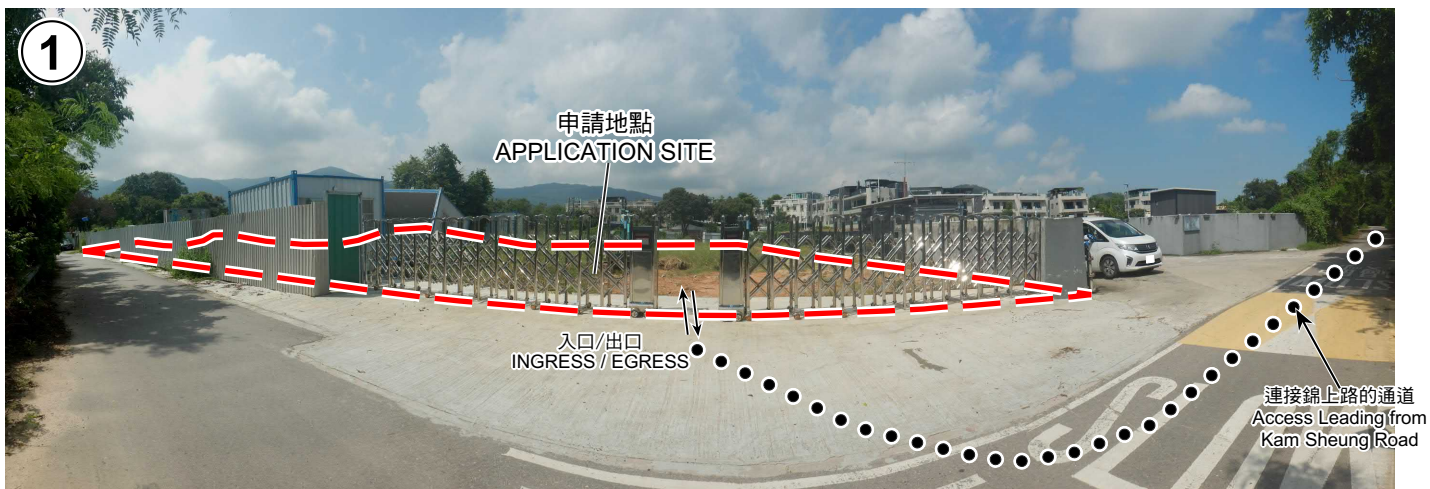
規劃署
Planning Department

參考編號
REFERENCE No.
A/YL-SK/430

圖 PLAN
A-3

本摘要圖於2025年11月5日擬備，所根據的資料為地政總署於2024年10月24日拍得的航攝照片編號 E238112C

EXTRACT PLAN PREPARED ON 5.11.2025
BASED ON AERIAL PHOTO No. E238112C
TAKEN ON 24.10.2024
BY LANDS DEPARTMENT



申請地點界線只作識別用
APPLICATION SITE BOUNDARY FOR IDENTIFICATION PURPOSE ONLY

實地照片 SITE PHOTOS

擬議臨時公眾停車場（貨櫃車除外）及相關的填土工程（為期3年）
新界元朗石崗丈量約份第106約地段第1054號B分段及第1056號B分段（部分）
PROPOSED TEMPORARY PUBLIC VEHICLE PARK (EXCLUDING
CONTAINER VEHICLE) AND ASSOCIATED FILLING OF
LAND FOR A PERIOD OF 3 YEARS
LOTS 1054 S.B. AND 1056 S.B (PART) IN D.D. 106,
SHEK KONG, YUEN LONG, NEW TERRITORIES



規劃署
Planning Department

參考編號
REFERENCE No.
A/YL-SK/430

圖 PLAN
A-4

本圖於2025年11月5日擬備，
所根據的資料為攝於
2025年8月8日的實地照片
PLAN PREPARED ON 5.11.2025
BASED ON SITE PHOTOS
TAKEN ON 8.8.2025