

(摘錄自申請人於 18.11.2025 呈交的申請書)
(Extract from Applicant's
Submission of 18.11.2025)

參考編號
REFERENCE No.
A/HSK/590

繪圖
DRAWING
A-1

繪圖 DRAWING
A-2

繪圖 DRAWING
A-3

DEVELOPMENT PARAMETERS

APPLICATION SITE AREA	: 5,206 m ²	(ABOUT)
COVERED AREA	: 234 m ²	(ABOUT)
UNCOVERED AREA	: 4,972 m ²	(ABOUT)
PLOT RATIO	: 0.04	(ABOUT)
SITE COVERAGE	: 4%	(ABOUT)
NO. OF STRUCTURE	: 2	
DOMESTIC GFA	: NOT APPLICABLE	
NON-DOMESTIC GFA	: 234 m ²	(ABOUT)
TOTAL GFA	: 234 m ²	(ABOUT)
BUILDING HEIGHT	: 3 m - 7 m	(ABOUT)
NO. OF STOREY	: 1	
OPEN STORAGE AREA	: 2,756 m ²	(ABOUT)
STACKING HEIGHT	: NOT MORE THAN 3 m	

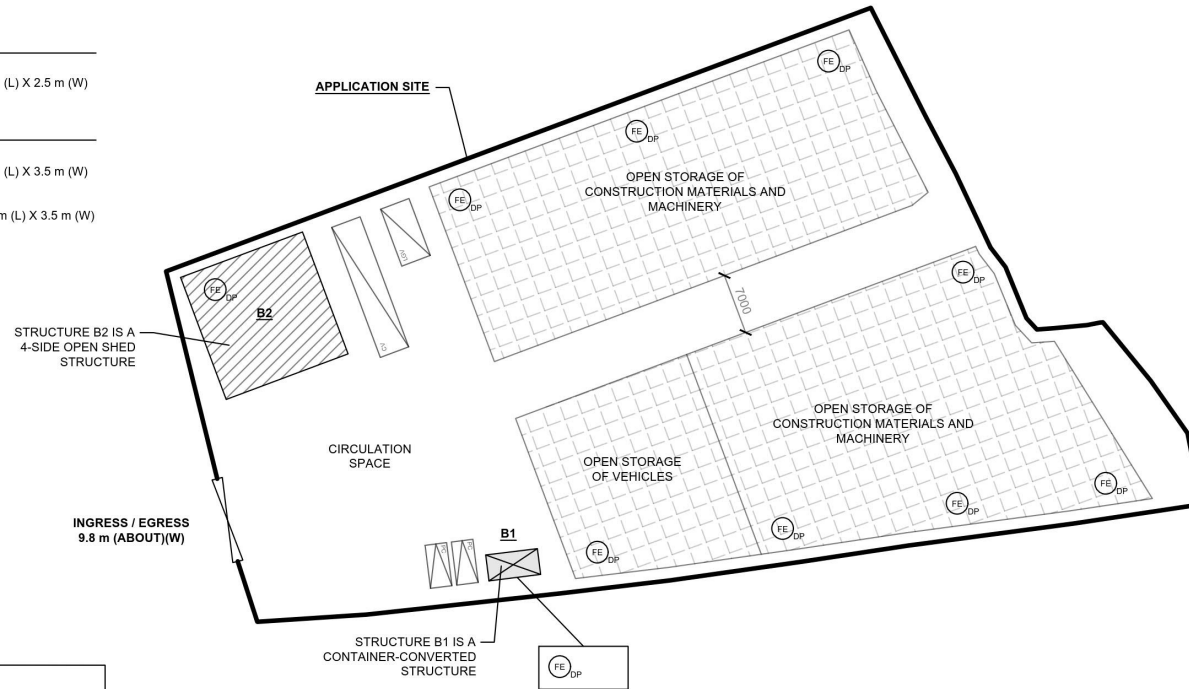
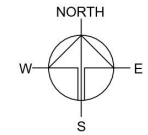
PARKING PROVISION

NO. OF PRIVATE CAR PARKING SPACE	: 2
DIMENSION OF LOADING/UNLOADING SPACE	: 5 m (L) X 2.5 m (W)

LOADING/UNLOADING (L/U/L) PROVISION

NO. OF L/U/L SPACE FOR LIGHT GOODS VEHICLE	: 1
DIMENSION OF LOADING/UNLOADING SPACE	: 7 m (L) X 3.5 m (W)
NO. OF L/U/L SPACE FOR CONTAINER VEHICLE	: 1
DIMENSION OF LOADING/UNLOADING SPACE	: 16 m (L) X 3.5 m (W)

STRUCTURE	USE	COVERED AREA	GROSS FLOOR AREA	BUILDING HEIGHT
B1	SITE OFFICE AND WASHROOM	18 m ² (ABOUT)	18 m ² (ABOUT)	3 m (ABOUT)(1-STOREY)
B2	STORAGE OF CONSTRUCTION MATERIALS AND MACHINERY	216 m ² (ABOUT)	216 m ² (ABOUT)	7 m (ABOUT)(1-STOREY)
TOTAL		234 m ² (ABOUT)	234 m ² (ABOUT)	



FIRE SERVICE INSTALLATIONS

FE DP 4 KG DRY POWDER TYPE FIRE EXTINGUISHER

FS NOTE:

- SUITABLE TYPE OF PORTABLE FIRE EXTINGUISHER SHALL BE PROVIDED IN LOCATIONS WHERE EASILY ACCESSIBLE BY PERSON IN CHARGE WHERE THE NO. OF F.E. SHALL BE PROVIDED ACCORDING TO THE FORMULA = [OPEN STORAGE AREA X 0.003].

SITE BOUNDARY FOR IDENTIFICATION PURPOSE ONLY.

LEGEND

	APPLICATION SITE
	STRUCTURE (ENCLOSED)
	STRUCTURE (SHED)
	PARKING SPACE (PC)
	LOADING / UNLOADING SPACE (LGV)
	LOADING / UNLOADING SPACE (CV)
	INGRESS / EGRESS

PLANNING CONSULTANT



PROJECT

PROPOSED TEMPORARY OPEN STORAGE OF CONSTRUCTION MATERIALS, MACHINERY AND VEHICLES WITH ANCILLARY FACILITIES FOR A PERIOD OF 3 YEARS

SITE LOCATION

VARIOUS LOTS IN D.D. 125, HUNG SHUI KIU, YUEN LONG, NEW TERRITORIES

SCALE

1:750 @ A4

DRAWN BY MN DATE 24.12.2025

CHECKED BY DATE

APPROVED BY DATE

DWG. TITLE

FSIs PROPOSAL

DWG NO.

ANNEX I

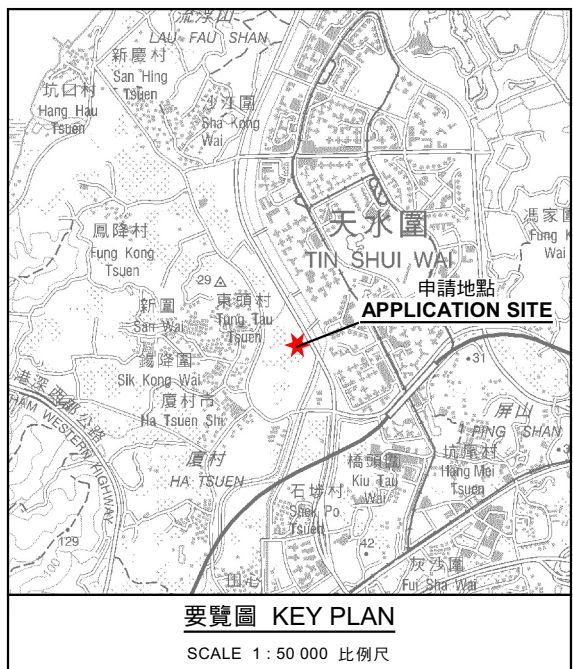
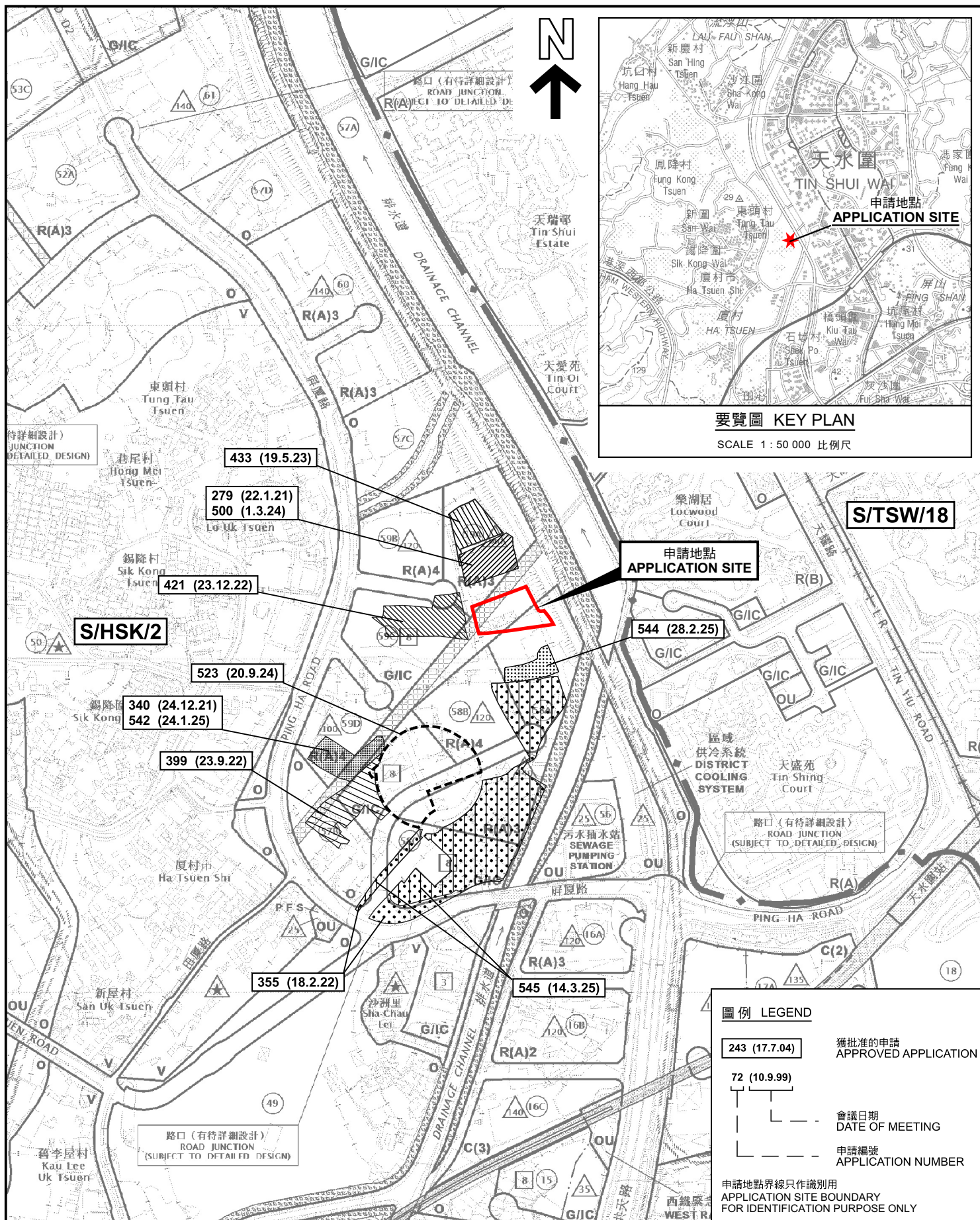
VER.

001

(摘錄自申請人於 29.12.2025 呈交的進一步資料)
(Extract from Applicant's Further
Information Submitted on 29.12.2025)

參考編號
REFERENCE No.
A/HSK/590

繪圖 DRAWING
A-4



位置圖 LOCATION PLAN

擬議臨時露天存放建築材料、機械及車輛連附屬設施(為期3年)
 新界元朗洪水橋丈量約份第125約
 地段第1824號B分段餘段(部分)及第1824號C分段(部分)
 PROPOSED TEMPORARY OPEN STORAGE OF CONSTRUCTION MATERIALS,
 MACHINERY AND VEHICLES WITH ANCILLARY FACILITIES
 FOR A PERIOD OF 3 YEARS
 LOTS 1824 S.B RP (PART) AND 1824 S.C (PART)
 IN D.D.125, HUNG SHUI KIU, YUEN LONG, NEW TERRITORIES
 SCALE 1:7 500 比例尺

米 100 0 100 200 300 米
 METRES

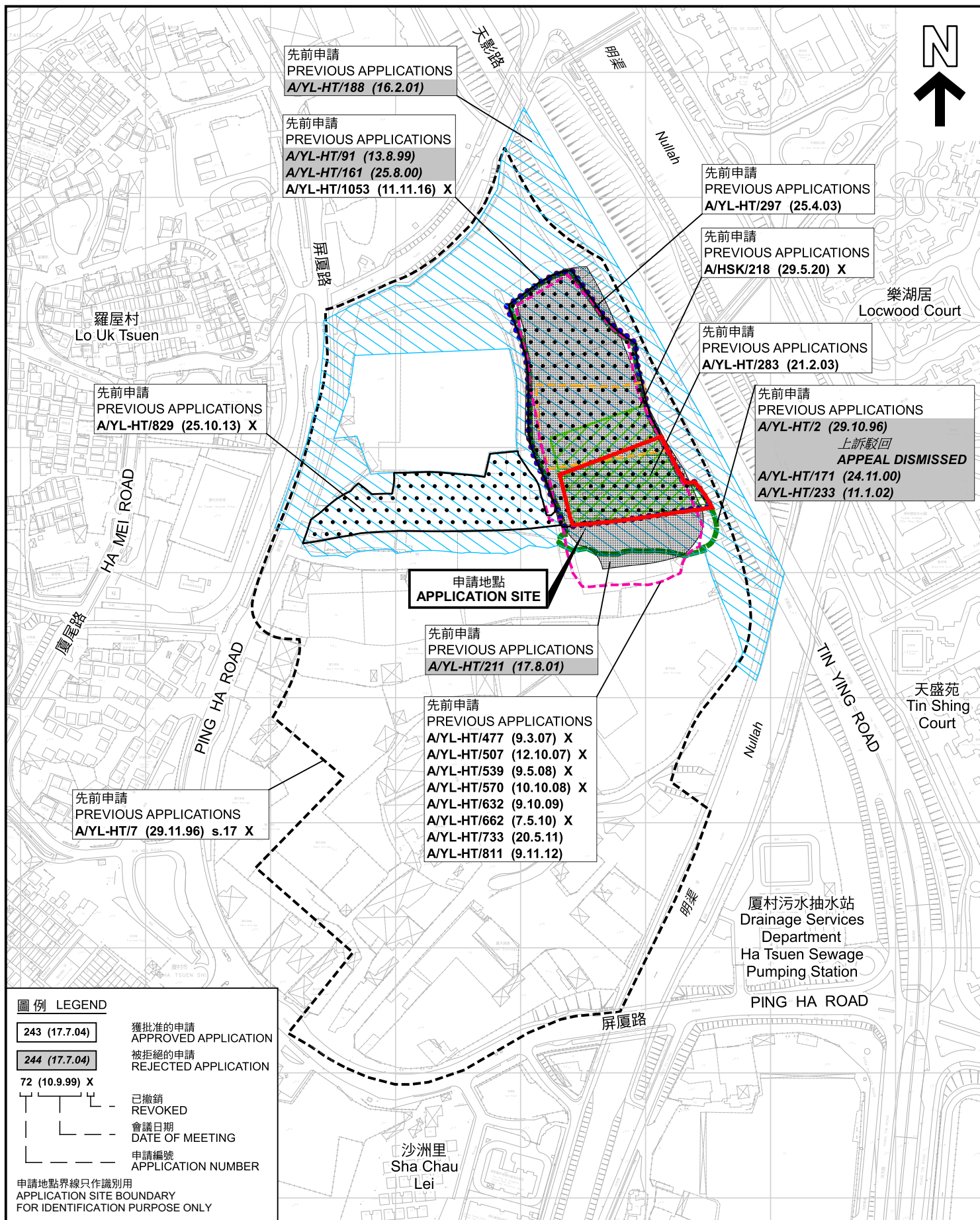


規劃署
 Planning Department

參考編號
 REFERENCE No.
 A/HSK/590

圖 PLAN
 A-1a

本摘要圖於2025年12月31日擬備，
 所根據的資料為於2018年10月16日
 核准的分區計劃大綱圖編號 S/HSK/2
 EXTRACT PLAN PREPARED ON 31.12.2025
 BASED ON OUTLINE ZONING PLAN No.
 S/HSK/2 APPROVED ON 16.10.2018



先前申請圖 PREVIOUS APPLICATIONS PLAN

擬議臨時露天存放建築材料、機械及車輛連附屬設施(為期3年)
新界元朗洪水橋丈量約份第125約
地段第1824號B分段餘段(部分)及第1824號C分段(部分)
PROPOSED TEMPORARY OPEN STORAGE OF CONSTRUCTION MATERIALS,
MACHINERY AND VEHICLES WITH ANCILLARY FACILITIES
FOR A PERIOD OF 3 YEARS
LOTS 1824 S.B RP (PART) AND 1824 S.C (PART)
IN D.D.125, HUNG SHUI KIU, YUEN LONG, NEW TERRITORIES
SCALE 1 : 4 000 比例尺

米 80 0 80 160 米
METRES

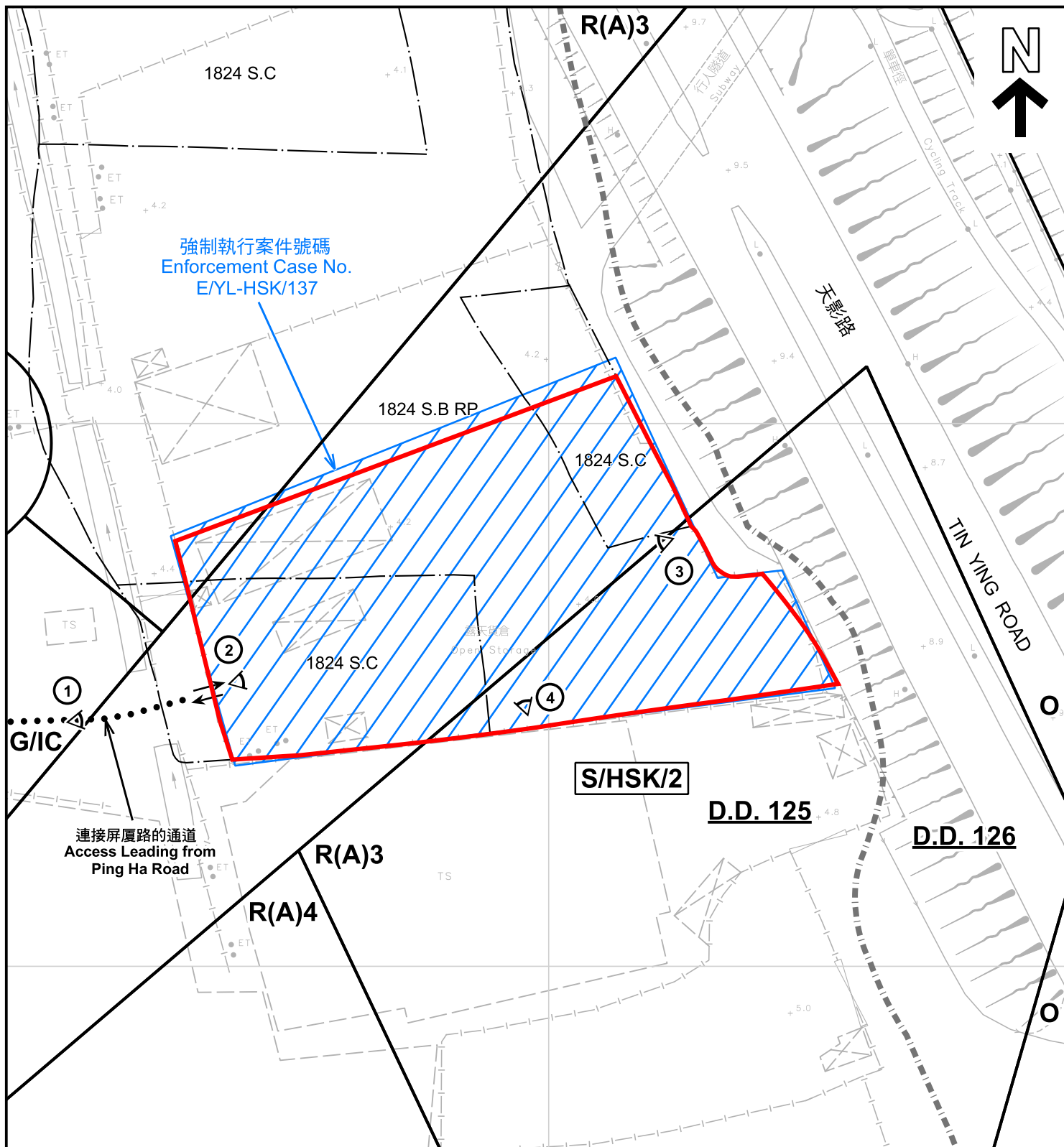


規劃署
Planning Department

參考編號
REFERENCE No.
A/HSK/590

圖 PLAN
A-1b

本摘要圖於2025年12月31日擬備，所根據的
資料為測量圖編號 6-NW-7B
EXTRACT PLAN PREPARED ON 31.12.2025
BASED ON SURVEY SHEET No.
6-NW-7B



圖例 LEGEND

-  申請地點 (界線只作識別用)
APPLICATION SITE (BOUNDARY FOR IDENTIFICATION PURPOSE ONLY)
- R(A)** 住宅(甲類)
RESIDENTIAL (GROUP A)
- G/IC** 政府、機構或社區
GOVERNMENT, INSTITUTION OR COMMUNITY

-  休憩用地
OPEN SPACE
-  實地照片的觀景點
VIEWING POINT OF SITE PHOTO
-  丈量約份界線
D.D. BOUNDARY
-  入口/出口
INGRESS / EGRESS

註釋 Notes :

2025年11月25日勘測的土地用途
Land uses shown on this plan are in accordance with the land use survey conducted by the Planning Department on 25.11.2025

平面圖 SITE PLAN

擬議臨時露天存放建築材料、機械及車輛連附屬設施(為期3年)
新界元朗洪水橋丈量約份第125約

地段第1824號B分段餘段(部分)及第1824號C分段(部分)
PROPOSED TEMPORARY OPEN STORAGE OF CONSTRUCTION MATERIALS,
MACHINERY AND VEHICLES WITH ANCILLARY FACILITIES
FOR A PERIOD OF 3 YEARS
LOTS 1824 S.B RP (PART) AND 1824 S.C (PART)
IN D.D.125, HUNG SHUI KIU, YUEN LONG, NEW TERRITORIES

SCALE 1 : 1 000 比例尺

米 20 0 20 40 米
METRES

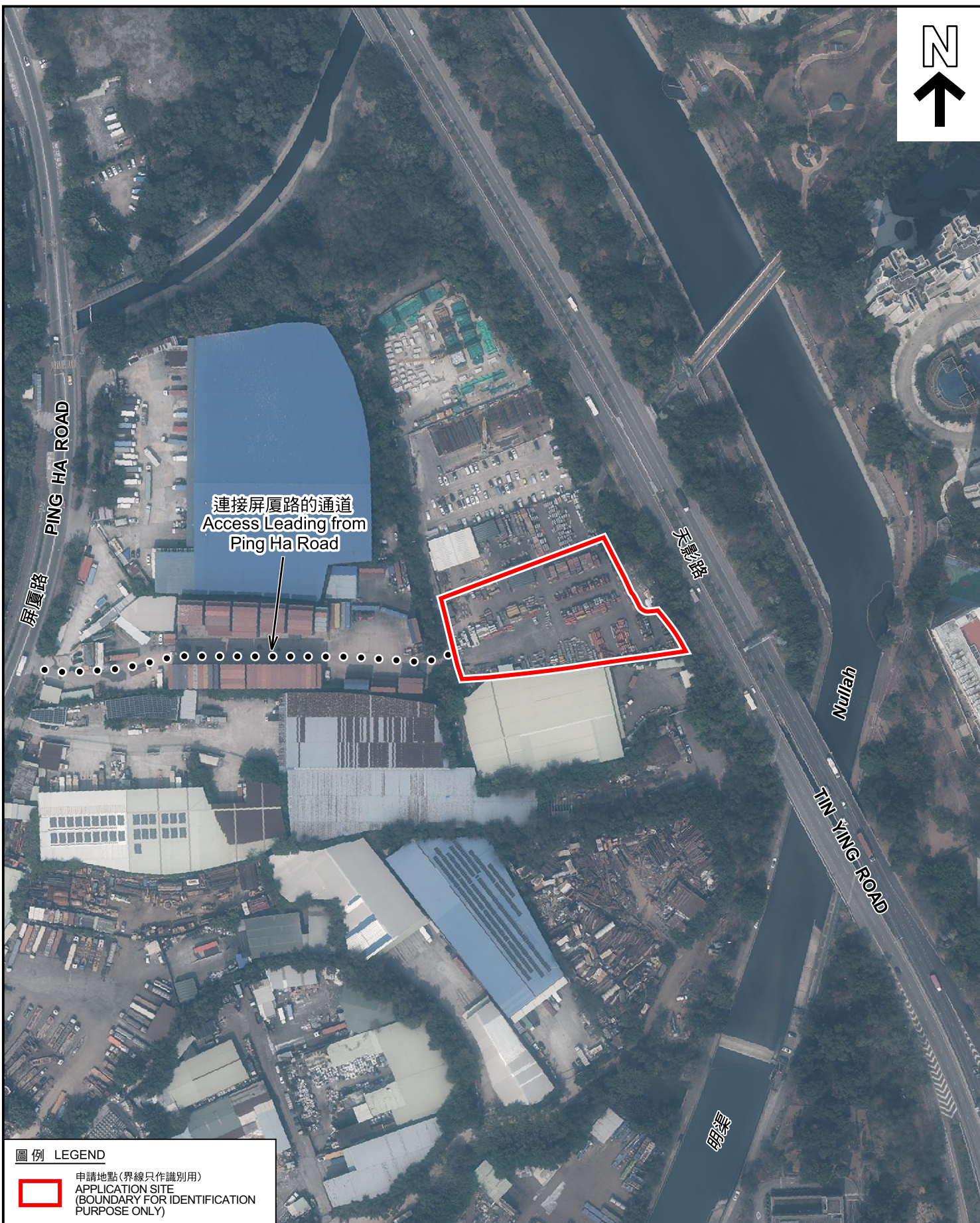


規劃署
Planning Department

參考編號
REFERENCE No.
A/HSK/590

圖 PLAN
A-2

本摘要圖於2025年12月31日擬備，所根據的
資料為測量圖編號 6-NW-7B
EXTRACT PLAN PREPARED ON 31.12.2025
BASED ON SURVEY SHEET No.
6-NW-7B



圖例 LEGEND



申請地點(界線只作識別用)
APPLICATION SITE
(BOUNDARY FOR IDENTIFICATION
PURPOSE ONLY)

航攝照片 AERIAL PHOTO

擬議臨時露天存放建築材料、機械及車輛連附屬設施(為期3年)
新界元朗洪水橋丈量約份第125約

地段第1824號B分段餘段(部分)及第1824號C分段(部分)
PROPOSED TEMPORARY OPEN STORAGE OF CONSTRUCTION MATERIALS,
MACHINERY AND VEHICLES WITH ANCILLARY FACILITIES
FOR A PERIOD OF 3 YEARS
LOTS 1824 S.B RP (PART) AND 1824 S.C (PART)
IN D.D.125, HUNG SHUI KIU, YUEN LONG, NEW TERRITORIES



規劃署
Planning Department

本摘要圖於2025年12月31日擬備，所根據的資料為地政總署於2023年2月24日拍得的航攝照片編號 E187396C
EXTRACT PLAN PREPARED ON 31.12.2025
BASED ON AERIAL PHOTO No.
E187396C TAKEN ON 24.2.2023
BY LANDS DEPARTMENT

參考編號
REFERENCE No.
A/HSK/590

圖 PLAN
A-3



申請地點界線只作識別用 APPLICATION SITE BOUNDARY FOR IDENTIFICATION PURPOSE ONLY

實地照片 SITE PHOTOS

擬議臨時露天存放建築材料、機械及車輛連附屬設施(為期3年)
 新界元朗洪水橋丈量約份第125約
 地段第1824號B分段餘段(部分)及第1824號C分段(部分)
 PROPOSED TEMPORARY OPEN STORAGE OF CONSTRUCTION MATERIALS,
 MACHINERY AND VEHICLES WITH ANCILLARY FACILITIES
 FOR A PERIOD OF 3 YEARS
 LOTS 1824 S.B RP (PART) AND 1824 S.C (PART)
 IN D.D.125, HUNG SHUI KIU, YUEN LONG, NEW TERRITORIES



規劃署
Planning Department

參考編號
REFERENCE No.
A/HSK/590

圖 PLAN
A-4

本圖於2025年12月23日擬備，所根據的資料為攝於2025年11月25日的實地照片
 PLAN PREPARED ON 23.12.2025
 BASED ON SITE PHOTOS
 TAKEN ON 25.11.2025