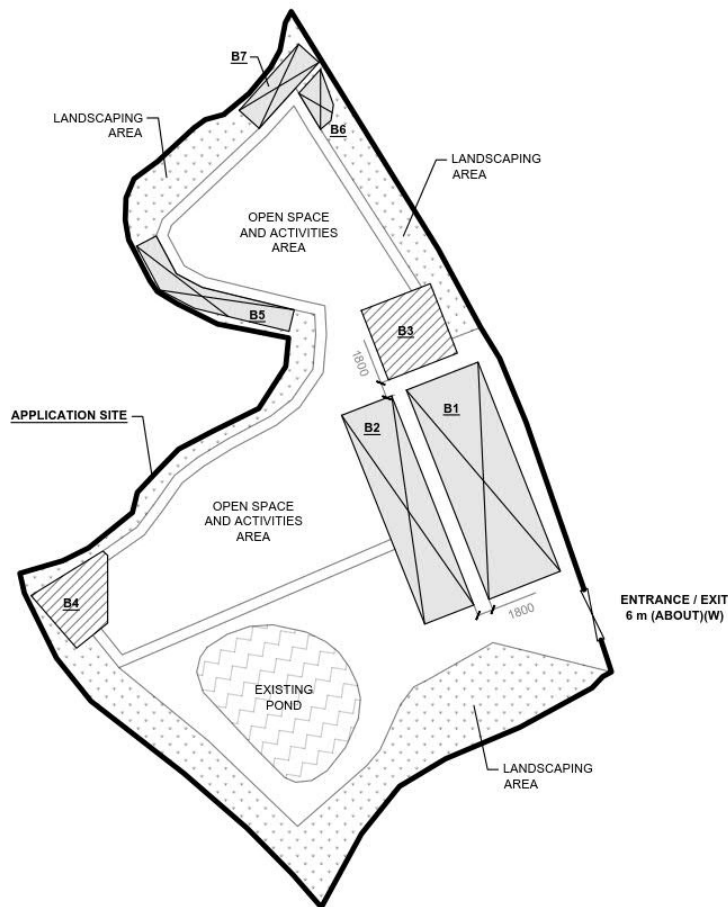


DEVELOPMENT PARAMETERS

APPLICATION SITE AREA	: 3,271 m ² (ABOUT)
COVERED AREA	: 591 m ² (ABOUT)
UNCOVERED AREA	: 2,680 m ² (ABOUT)
PLOT RATIO	: 0.18 (ABOUT)
SITE COVERAGE	: 18% (ABOUT)
NO. OF STRUCTURE	: 7
DOMESTIC GFA	: NOT APPLICABLE
NON-DOMESTIC GFA	: 591m ² (ABOUT)
TOTAL GFA	: 591 m ² (ABOUT)
BUILDING HEIGHT	: 3 m - 5 m (ABOUT)
NO. OF STOREY	: 1

STRUCTURE	USE	COVERED AREA	GROSS FLOOR AREA	BUILDING HEIGHT
B1	RECEPTION, SITE OFFICE, WASHROOM, RELIGIOUS ACTIVITIES ROOM	220 m ² (ABOUT)	220 m ² (ABOUT)	3.5 m (ABOUT)(1-STOREY)
B2	RELIGIOUS ACTIVITIES ROOM	152 m ² (ABOUT)	152 m ² (ABOUT)	3.5 m (ABOUT)(1-STOREY)
B3	FS WATER TANK AND CONTROL ROOM, AND PANTRY	70 m ² (ABOUT)	70 m ² (ABOUT)	4 m (ABOUT)(1-STOREY)
B4	STAGE FOR RELIGIOUS ACTIVITIES	54 m ² (ABOUT)	54 m ² (ABOUT)	5 m (ABOUT)(1-STOREY)
B5	STORAGE OF MISCELLANEOUS	50 m ² (ABOUT)	50 m ² (ABOUT)	3 m (ABOUT)(1-STOREY)
B6	STORAGE OF MISCELLANEOUS	15 m ² (ABOUT)	15 m ² (ABOUT)	3 m (ABOUT)(1-STOREY)
B7	METER ROOM	30 m ² (ABOUT)	30 m ² (ABOUT)	3 m (ABOUT)(1-STOREY)
TOTAL		591 m ² (ABOUT)	591 m ² (ABOUT)	



LEGEND

- APPLICATION SITE
- STRUCTURE (ENCLOSED)
- STRUCTURE (SHED STRUCTURE)
- ENTRANCE / EXIT

NO PARKING AND LOADING / UNLOADING SPACE IS PROVIDED AT THE APPLICATION SITE.

PLANNING CONSULTANT



PROJECT

PROPOSED TEMPORARY RELIGIOUS INSTITUTION WITH ANCILLARY FACILITIES AND ASSOCIATED FILLING OF LAND FOR A PERIOD OF 5 YEARS

SITE LOCATION

VARIOUS LOTS IN D.D. 103, KAM TIN, YUEN LONG, NEW TERRITORIES

SCALE

1:750 @ A4

DRAWN BY

MN

DATE

14.10.2025

CHECKED BY

DATE

APPROVED BY

DATE

DWG. TITLE

LAYOUT PLAN

DWG NO.

PLAN 4

VER.

001

(摘錄自申請人於 18.11.2025 呈交的申請書)
(Extract from Applicant's
Submission of 18.11.2025)

參考編號
REFERENCE No.
A/YL-KTS/1106

繪圖
DRAWING
A - 1

FILLING OF LAND AREA OF THE APPLICATION SITE

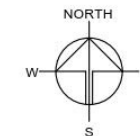
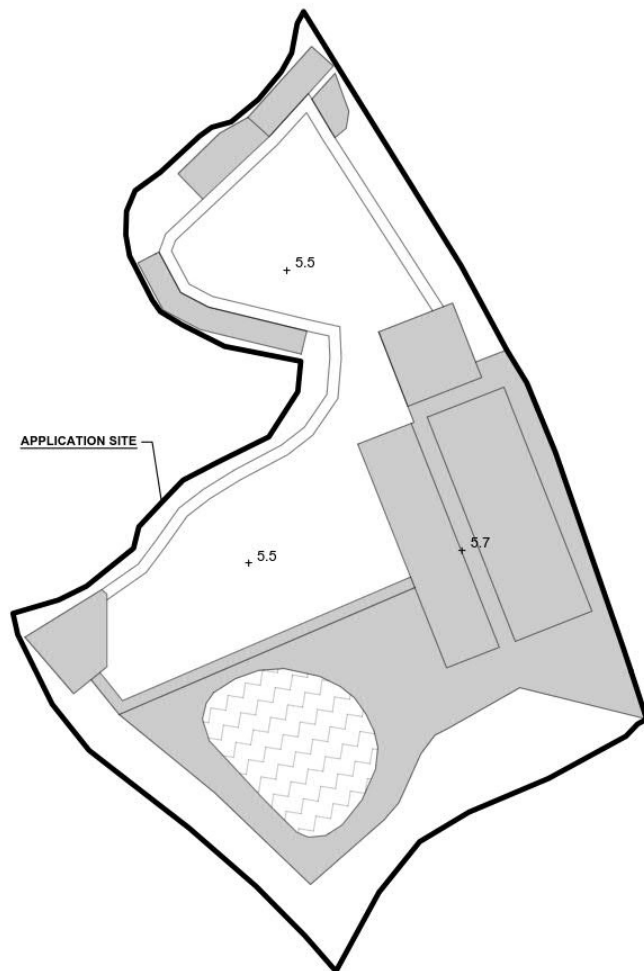
APPLICATION SITE AREA : 3,271 m² (ABOUT)
 PROPOSED FILLING OF LAND AREA : 1,065 m² (ABOUT)
 DEPTH OF LAND FILLING : NOT MORE THAN 0.2 m
 EXISTING SITE LEVEL : +5.5 mPD TO 5.7 mPD (ABOUT)
 MATERIAL OF LAND FILLING : CONCRETE
 PURPOSE OF LAND FILLING : SITE FORMATION OF STRUCTURES AND CIRCULATION AREA

EXISTING POND AREA : 226 m² (ABOUT)
 USE OF POND : FISHING ACTIVITIES

REMAINING AREA : 1,980 m² (ABOUT)
 USE OF REMAINING AREA : LANDSCAPING AREA, OPEN SPACE AND ACTIVITIES AREA

ALL EXISTING TREES WITHIN THE SITE WILL BE PRESERVED.

THE APPLICATION SITE HAS ALREADY BEEN FILLED WITH CONCRETE. NO FURTHER FILLING OF LAND WILL BE CARRIED AT THE SITE AFTER PLANNING PERMISSION HAS BEEN GRANTED FROM THE TOWN PLANNING BOARD.



PLANNING CONSULTANT



PROJECT

PROPOSED TEMPORARY
 RELIGIOUS INSTITUTION WITH
 ANCILLARY FACILITIES AND
 ASSOCIATED FILLING OF LAND
 FOR A PERIOD OF 5 YEARS

SITE LOCATION

VARIOUS LOTS IN D.D. 103, KAM
 TIN, YUEN LONG, NEW
 TERRITORIES

SCALE

1:700 @ A4

DRAWN BY

MN

DATE

14.10.2025

CHECKED BY

DATE

APPROVED BY

DATE

DWG. TITLE

FILLING OF LAND AREA

DWG NO.

PLAN 5

VER.

001

LEGEND

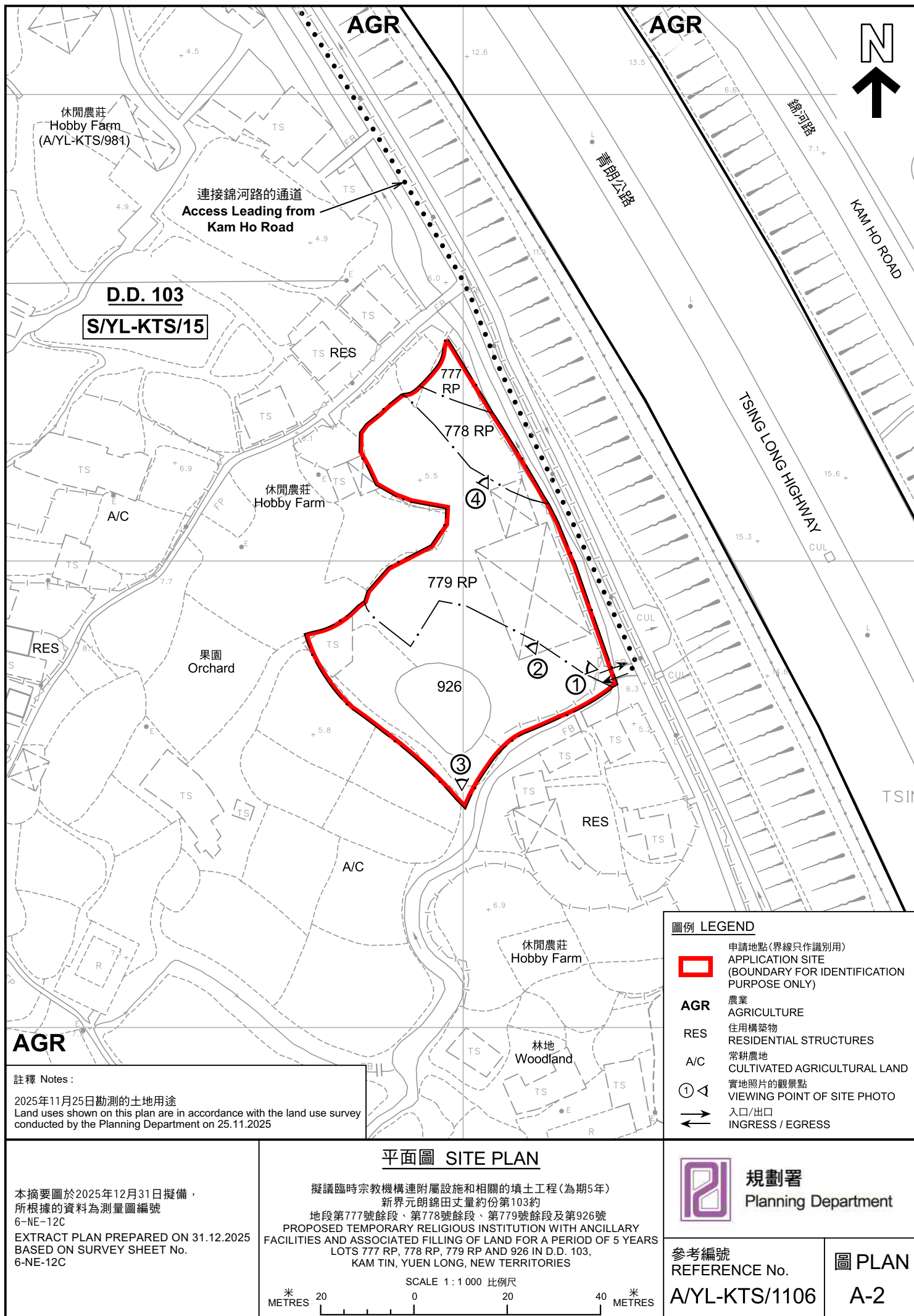
- APPLICATION SITE
- FILLING OF LAND AREA
- +5.5 PROPOSED SITE LEVEL

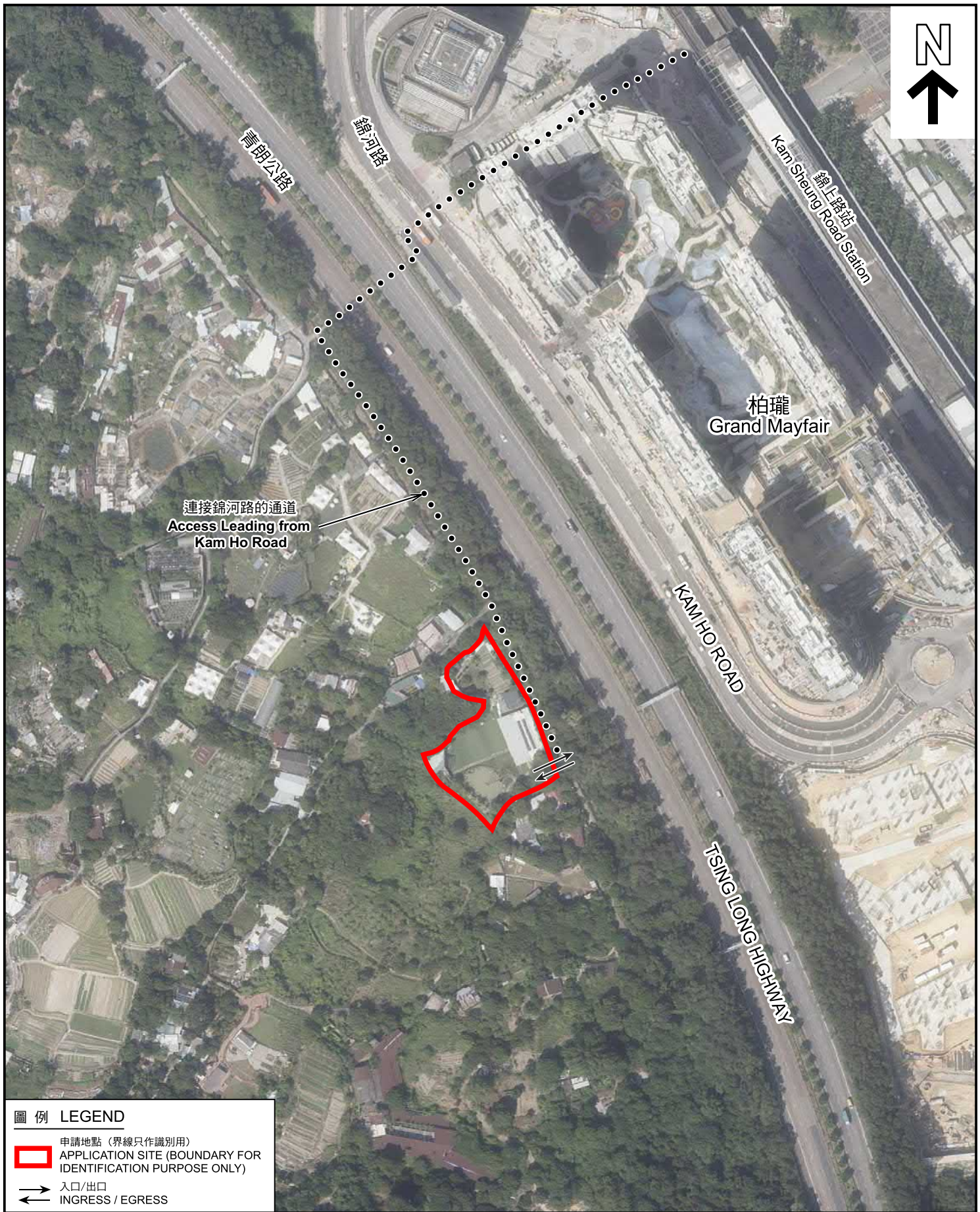
SITE BOUNDARY FOR IDENTIFICATION PURPOSE ONLY.

(摘錄自申請人於 18.11.2025 呈交的申請書)
 (Extract from Applicant's
 Submission of 18.11.2025)

參考編號
 REFERENCE No.
 A/YL-KTS/1106

繪圖
 DRAWING
 A - 2





圖例 LEGEND

-  申請地點 (界線只作識別用)
APPLICATION SITE (BOUNDARY FOR IDENTIFICATION PURPOSE ONLY)
-  入口/出口
INGRESS / EGRESS

航攝照片 AERIAL PHOTO

本摘要圖於2025年12月30日擬備，
所根據的資料為地政總署於2024年10月24日
拍得的航攝照片編號 E238119C 及 E238121C
EXTRACT PLAN PREPARED ON 30.12.2025
BASED ON AERIAL PHOTOS No.
E238119C & E238121C TAKEN ON
24.10.2024 BY LANDS DEPARTMENT

擬議臨時宗教機構連附屬設施和相關的填土工程(為期5年)
新界元朗錦田丈量約份第103約
地段第777號餘段、第778號餘段、第779號餘段及第926號
PROPOSED TEMPORARY RELIGIOUS INSTITUTION WITH ANCILLARY
FACILITIES AND ASSOCIATED FILLING OF LAND FOR A PERIOD OF 5 YEARS
LOTS 777 RP, 778 RP, 779 RP AND 926 IN D.D. 103,
KAM TIN, YUEN LONG, NEW TERRITORIES



規劃署
Planning Department

參考編號
REFERENCE No.
A/YL-KTS/1106

圖 PLAN
A-3



申請地點界線只作識別用 APPLICATION SITE BOUNDARY FOR IDENTIFICATION PURPOSE ONLY

實地照片 SITE PHOTOS

本圖於2026年1月2日擬備，所根據的資料為攝於2025年11月25日的實地照片
PLAN PREPARED ON 2.1.2026
BASED ON SITE PHOTOS
TAKEN ON 25.11.2025

擬議臨時宗教機構連附屬設施和相關的填土工程(為期5年)
新界元朗錦田丈量約份第103約
地段第777號餘段、第778號餘段、第779號餘段及第926號
PROPOSED TEMPORARY RELIGIOUS INSTITUTION WITH ANCILLARY
FACILITIES AND ASSOCIATED FILLING OF LAND FOR A PERIOD OF 5 YEARS
LOTS 777 RP, 778 RP, 779 RP AND 926 IN D.D. 103,
KAM TIN, YUEN LONG, NEW TERRITORIES



規劃署
Planning Department

參考編號
REFERENCE No.
AYL-KTS/1106

圖 PLAN
A-4