

**Extracted from Approved Tai Tong Outline Zoning Plan No. S/YL-TT/20**

<b>N.T.S</b>	<b>Location Plan</b>	<b>Goldrich Planners &amp; Surveyors Ltd.</b>
<b>August 2025</b>	<b>Lots 839 S.A(part) and 840(part) in DD.117 Yuen Long, N.T</b>	<b>Plan 1 ( P 25054 )</b>

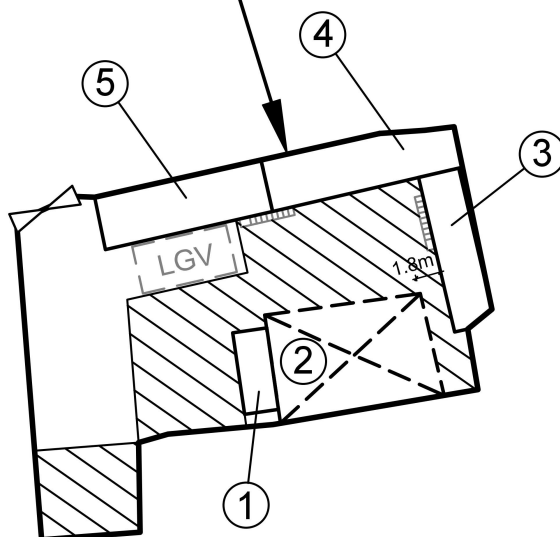
(摘錄自申請人於 10.11.2025 呈交的申請書)  
(Extract from Applicant's  
Submission of 10.11.2025)

參考編號  
REFERENCE No.  
A/YL-TT/752

繪圖 DRAWING  
A-1



## Application Site



### Legend:



Vehicular Ingress/ Egress



Parking space for light goods vehicle  
(7m (L) x 3.5m (W))



Staircase



Open storage Area  
(about 255m<sup>2</sup>)

**Site Area(about): 665m<sup>2</sup>**

No.	Uses		Floor Area (about)	Covered Area (about)	Storeys	Height
1	Container Storage		15 m²	15 m²	1	2.5m
2	Warehouse		91 m²	91 m²	1	4.5m
3	G/F	Storage with Ancillary Office	34 m²	34 m²	2	7m
	1/F	Sitting/resting area for staff	34 m²			
4	Storeroom		52 m²	52 m²	1	4.5m
5	G/F	Storage with Ancillary Office	48 m²	48 m²	2	7m
	1/F	Sitting/resting area for staff	48 m²			
Total			<u>322 m²</u>	<u>240 m²</u>		

**1:500**

### Layout Plan

**Goldrich Planners &  
Surveyors Ltd.**

**August 2025**

**Lots 839 S.A(part) and 840(part) in DD.117  
Yuen Long, N.T**

**Plan 3  
( P 25054 )**

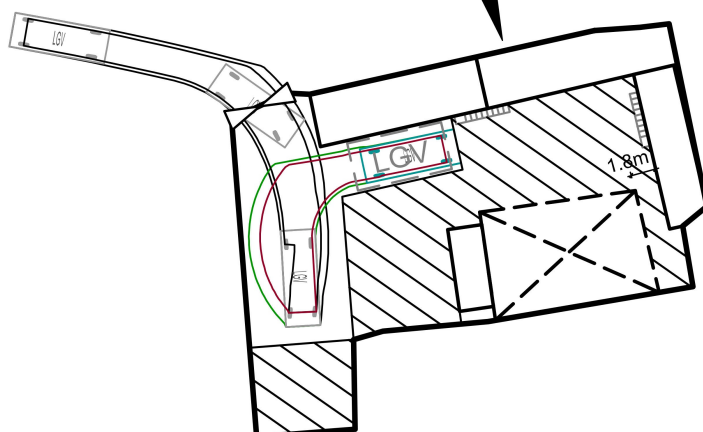
(摘錄自申請人於 10. 11. 2025 呈交的申請書)  
(Extract from Applicant's  
Submission of 10.11.2025)

參考編號  
REFERENCE No.  
A/YL-TT/752

繪圖 DRAWING  
A-2



## Application Site



### Legend:



Vehicular Ingress/ Egress



Parking space for light goods vehicle  
(7m (L) x 3.5m (W))



Staircase



Open storage Area  
(about 255m<sup>2</sup>)



light goods vehicle  
(7m (L) x 2.5m (W))

**1:500**

## Swept Path Analysis

**Goldrich Planners &  
Surveyors Ltd.**

**August 2025**

**Lots 839 S.A(part) and 840(part) in DD.117  
Yuen Long, N.T**

**Plan 4  
( P 25054 )**

(摘錄自申請人於 10. 11. 2025 呈交的申請書)  
**(Extract from Applicant's  
Submission of 10.11.2025)**

參考編號  
REFERENCE No.  
A/YL-TT/752

繪圖 DRAWING  
A-3











白沙村  
Pak Sha Tsuen



黃泥墩村  
Wong Nai Tun Tsuen

Nullah

KUNG UM ROAD  
PAK SHA SHAN ROAD

明渠



連接白沙山路的通道  
Access Leading from  
Pak Sha Shan Road

公庵路  
白沙山路

#### 圖例 LEGEND



申請地點(界線只作識別用)  
APPLICATION SITE  
(BOUNDARY FOR IDENTIFICATION  
PURPOSE ONLY)

#### 航攝照片 AERIAL PHOTO

臨時貨倉(危險品倉庫除外)及露天存放  
建築材料和汽車(私家車及輕型貨車)連附屬辦公室(為期3年)  
元朗大棠丈量約份第117約地段第839號A分段(部份)及第840號(部份)  
TEMPORARY WAREHOUSE (EXCLUDING DANGEROUS GOODS GODOWN)  
AND OPEN STORAGE OF CONSTRUCTION MATERIALS AND VEHICLES  
(PRIVATE CARS AND LIGHT GOODS VEHICLES)  
WITH ANCILLARY OFFICE FOR A PERIOD OF 3 YEARS  
LOTS 839 S.A. (PART) AND 840 (PART) IN D.D. 117, TAI TONG, YUEN LONG



規劃署  
Planning Department

參考編號  
REFERENCE No.  
A/YL-TT/752

圖 PLAN  
A-3

本摘要圖於2025年12月18日擬備，所根據  
的資料為地政總署於2025年1月3日拍得  
的航攝照片編號 E246564C  
EXTRACT PLAN PREPARED ON 18.12.2025  
BASED ON AERIAL PHOTO No.  
E246564C TAKEN ON 3.1.2025  
BY LANDS DEPARTMENT





### 實地照片 SITE PHOTOS

本圖於2025年12月8日擬備，所根據的資料為攝於2025年11月18日的實地照片  
PLAN PREPARED ON 8.12.2025  
BASED ON SITE PHOTOS  
TAKEN ON 18.11.2025

臨時貨倉(危險品倉庫除外)及露天存放  
建築材料和汽車(私家車及輕型貨車)連附屬辦公室(為期3年)  
元朗大棠丈量約份第117約地段第839號A分段(部份)及第840號(部份)  
TEMPORARY WAREHOUSE (EXCLUDING DANGEROUS GOODS GODOWN)  
AND OPEN STORAGE OF CONSTRUCTION MATERIALS AND VEHICLES  
(PRIVATE CARS AND LIGHT GOODS VEHICLES)  
WITH ANCILLARY OFFICE FOR A PERIOD OF 3 YEARS  
LOTS 839 S.A (PART) AND 840 (PART) IN D.D. 117, TAI TONG, YUEN LONG



規劃署  
Planning Department

參考編號  
REFERENCE No.  
A/YL-TT/752

圖 PLAN  
A-4