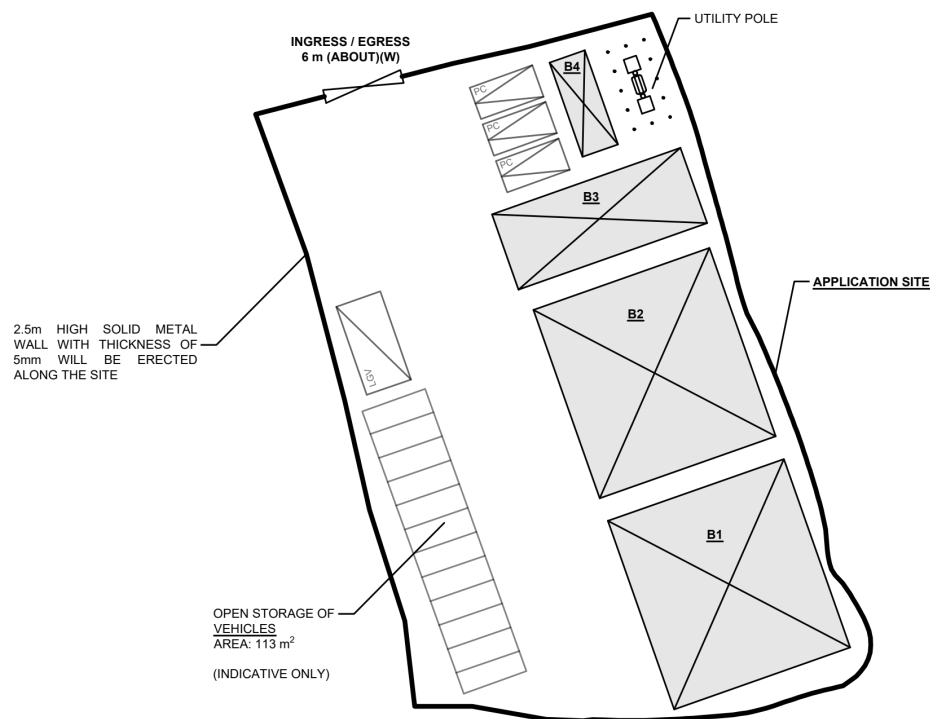
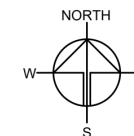


# DEVELOPMENT PARAMETERS

APPLICATION SITE AREA	: 1,602 m <sup>2</sup>	(ABOUT)
COVERED AREA	: 531 m <sup>2</sup>	(ABOUT)
UNCOVERED AREA	: 1,071 m <sup>2</sup>	(ABOUT)
PLOT RATIO	: 0.39	(ABOUT)
SITE COVERAGE	: 33%	(ABOUT)
NO. OF STRUCTURE	: 4	
DOMESTIC GFA	: NOT APPLICABLE	
NON-DOMESTIC GFA	: 621 m <sup>2</sup>	(ABOUT)
TOTAL GFA	: 621 m <sup>2</sup>	(ABOUT)
BUILDING HEIGHT	: 3 m - 7 m	(ABOUT)
NO. OF STOREY	: 1 - 2	

STRUCTURE	USE	COVERED AREA	GROSS FLOOR AREA	BUILDING HEIGHT
B1	VEHICLE REPAIR WORKSHOP	210 m <sup>2</sup> (ABOUT)	210 m <sup>2</sup> (ABOUT)	7 m (ABOUT)(1-STOREY)
B2	VEHICLE REPAIR WORKSHOP	210 m <sup>2</sup> (ABOUT)	210 m <sup>2</sup> (ABOUT)	7 m (ABOUT)(1-STOREY)
B3	SHOP AND SERVICES	90 m <sup>2</sup> (ABOUT)	180 m <sup>2</sup> (ABOUT)	7 m (ABOUT)(2-STOREY)
B4	WASHROOM AND METER ROOM	21 m <sup>2</sup> (ABOUT)	21 m <sup>2</sup> (ABOUT)	3 m (ABOUT)(1-STOREY)
TOTAL		531 m <sup>2</sup> (ABOUT)	621 m <sup>2</sup> (ABOUT)	



## PARKING PROVISION

NO. OF PRIVATE CAR PARKING SPACE	: 3
DIMENSION OF LOADING/UNLOADING SPACE	: 5 m (L) X 2.5 m (W)

## LOADING/UNLOADING (L/U) PROVISION

NO. OF L/U SPACE FOR LIGHT GOODS VEHICLE	: 1
DIMENSION OF LOADING/UNLOADING SPACE	: 7 m (L) X 3.5 m (W)

SITE BOUNDARY FOR IDENTIFICATION PURPOSE ONLY.

## LEGEND

	APPLICATION SITE
	STRUCTURE
	PARKING SPACE (PC)
	LOADING / UNLOADING SPACE (LGV)
	INGRESS / EGRESS

PLANNING CONSULTANT



PROJECT

PROPOSED TEMPORARY VEHICLE REPAIR WORKSHOP, SHOP AND SERVICES AND ANCILLARY OPEN STORAGE OF VEHICLES WITH ANCILLARY FACILITIES AND ASSOCIATED FILLING OF LAND FOR A PERIOD OF 3 YEARS

SITE LOCATION

LOTS 1114 (PART) AND 1115 (PART) IN D.D. 82, TAK KWU LING, NEW TERRITORIES

SCALE

1:500 @ A4

DRAWN BY MN DATE 13.11.2025

CHECKED BY DATE

APPROVED BY DATE

DWG. TITLE

LAYOUT PLAN

DWG NO.

PLAN 1

VER.

001

參考編號  
REFERENCE No.

A/NE-TKL/824

繪圖

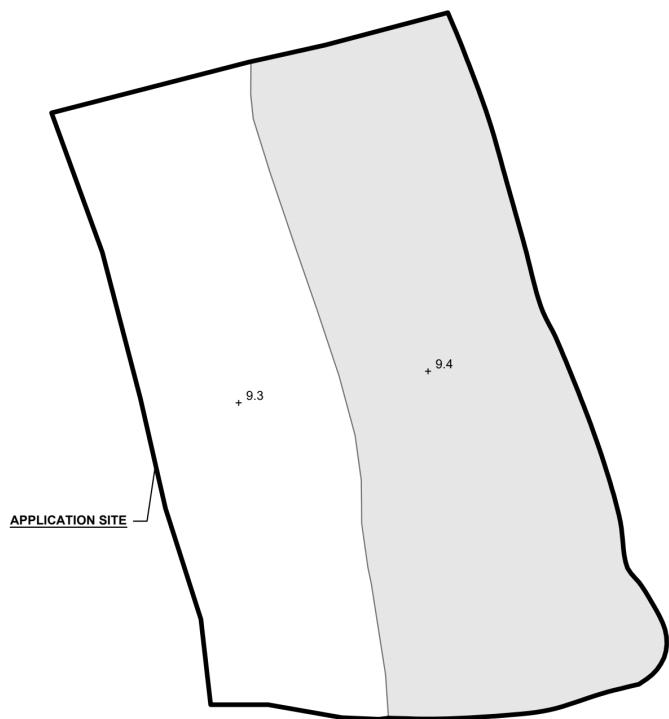
DRAWING A-1

(來源：申請人於2026年1月9日呈交的資料)

(SOURCE: APPLICANT'S SUBMISSION ON 9.1.2026)

#### APPLICATION SITE BEFORE FILLING OF LAND

APPLICATION SITE AREA : 1,602 m<sup>2</sup> (ABOUT)  
EXISTING HARD-PAVED AREA : 920 m<sup>2</sup> (ABOUT)  
SITE LEVELS BEFORE FILLING : +9.3 mPD - +9.4 mPD (ABOUT)



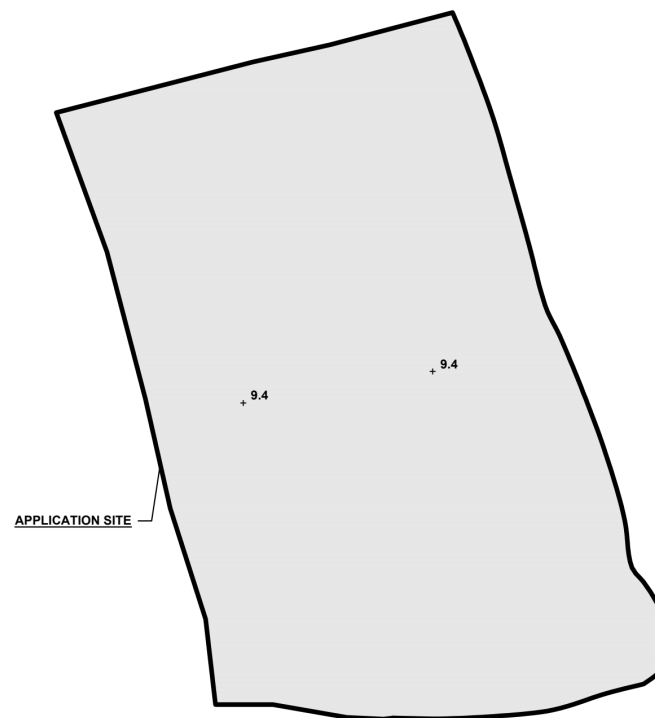
#### LEGEND

 APPLICATION SITE  
 SITE LEVEL BEFORE FILLING  
+ 9.3

\*SITE LEVELS ARE FOR ILLUSTRATION PURPOSE ONLY  
SITE BOUNDARY FOR IDENTIFICATION PURPOSE ONLY.

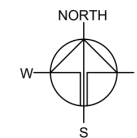
#### APPLIED FILLING OF LAND AT THE APPLICATION SITE

APPLICATION SITE AREA : 1,602 m<sup>2</sup> (ABOUT)  
PROPOSED FILLING AREA : 1,602 m<sup>2</sup> (ABOUT)  
DEPTH OF LAND FILLING : NOT MORE THAN 0.1 m (ABOUT)  
PROPOSED SITE LEVELS : +9.4 mPD (ABOUT)  
MATERIAL OF LAND FILLING : CONCRETE  
USE : LOADING / UNLOADING SPACE,  
OPEN STORAGE AND CIRCULATION AREA



#### LEGEND

 APPLICATION SITE  
 FILLING OF LAND AREA  
+ 9.4 SITE LEVEL AFTER FILLING



PLANNING CONSULTANT



PROJECT

PROPOSED TEMPORARY  
VEHICLE REPAIR WORKSHOP,  
SHOP AND SERVICES AND  
OPEN STORAGE OF VEHICLES  
WITH ANCILLARY FACILITIES  
AND ASSOCIATED FILLING OF  
LAND FOR A PERIOD OF 3  
YEARS

SITE LOCATION

LOTS 1114 (PART) AND 1115  
(PART) IN D.D. 82, PING CHE,  
NEW TERRITORIES

SCALE

1:500 @ A4

DRAWN BY

MN

DATE

13.11.2025

REVISED BY

DATE

APPROVED BY

DATE

DWG. TITLE

FILLING OF LAND AREA

DWG NO.

PLAN 5

VER.

001

參考編號  
REFERENCE No.

A/NE-TKL/824

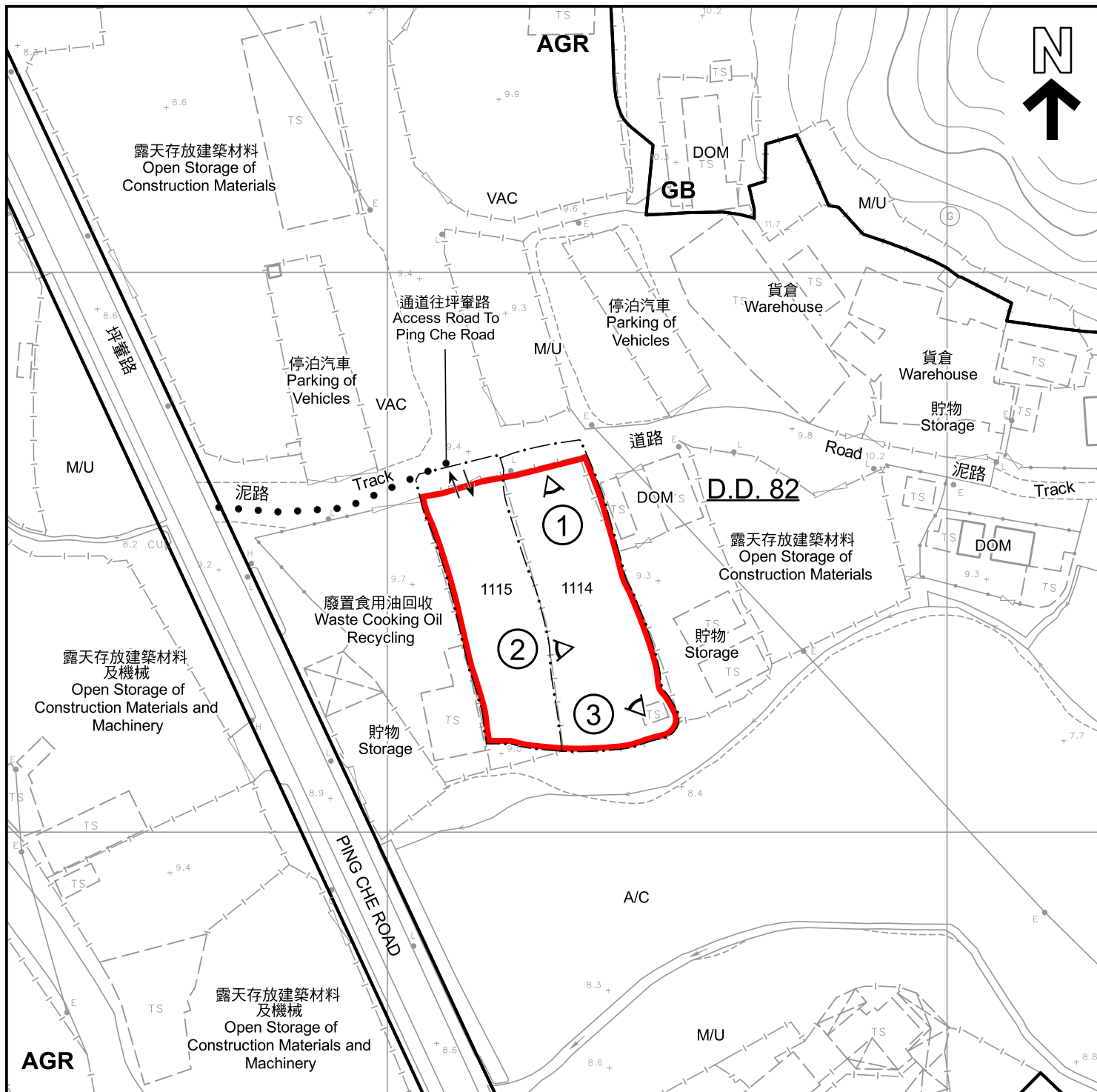
繪圖

DRAWING A-2

(來源：申請人於2025年11月26日呈交的資料)  
(SOURCE: APPLICANT'S SUBMISSION ON 26.11.2025)







#### 圖例 LEGEND

- |      |   |     |                                      |
|------|---|-----|--------------------------------------|
|      | 申請地點 (界線只作識別用)<br>APPLICATION SITE (BOUNDARY FOR IDENTIFICATION PURPOSE ONLY) | A/C | 常耕農地<br>CULTIVATED AGRICULTURAL LAND |
| AGR  | 農業<br>AGRICULTURE   | A/F | 休耕農地<br>FALLOW AGRICULTURAL LAND     |
| GB   | 綠化地帶<br>GREEN BELT  | DOM | 住用構築物<br>DOMESTIC STRUCTURE          |
| G/IC | 政府、機構或社區<br>GOVERNMENT, INSTITUTION OR COMMUNITY                              | M/U | 荒地<br>UNUSED LAND                    |
| ①    | 實地照片的觀景點<br>VIEWING POINT OF SITE PHOTO                                       | VAC | 空置<br>VACANT                         |
|      |   |     | 入口/出口<br>INGRESS / EGRESS            |

#### 註釋 Notes :

2025年12月5日勘測的土地用途  
Land uses shown on this plan are in accordance with the land use survey conducted by the Planning Department on 5.12.2025

#### 平面圖 SITE PLAN

擬議臨時汽車修理工場、商店及服務行業及附屬露天存放汽車連附屬設施及相關填土工程(為期3年)

新界打鼓嶺丈量約份第82約地段第1114號(部分)及第1115號(部分)  
PROPOSED TEMPORARY VEHICLE REPAIR WORKSHOP, SHOP AND SERVICES AND ANCILLARY OPEN STORAGE OF VEHICLE WITH ANCILLARY FACILITIES AND ASSOCIATED FILLING OF LAND

LOTS 1114 (PART) AND 1115 (PART) IN D.D. 82, TA KWU LING, N.T.

SCALE 1 : 1 000 比例尺

米 METRES 20 0 20 40 米 METRES

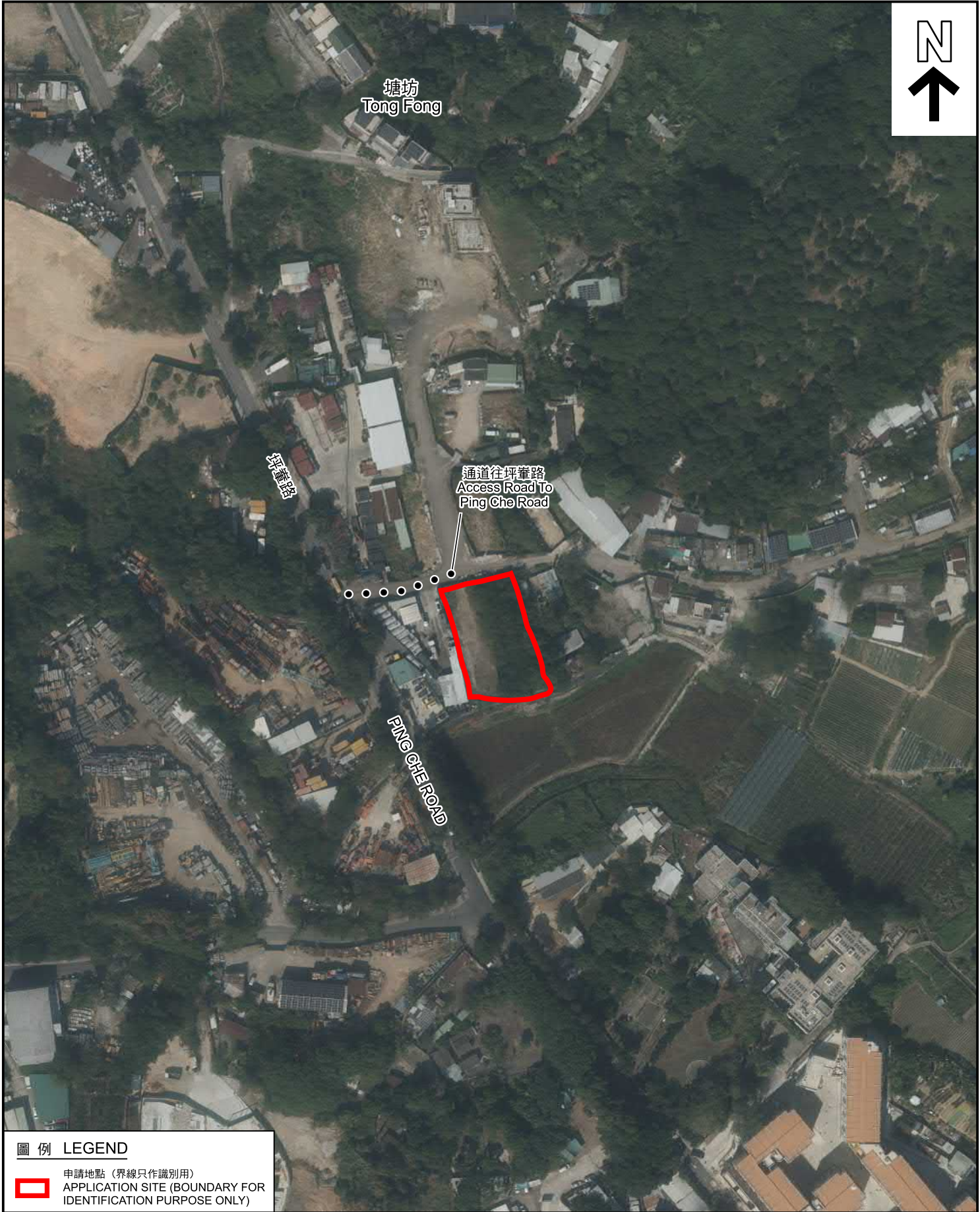


規劃署  
Planning Department

參考編號  
REFERENCE No.  
A/NE-TKL/824

圖 PLAN  
A-2

本摘要圖於2026年1月20日擬備，  
所根據的資料為測量圖編號  
3-NW-18A、18B、18C及18D  
EXTRACT PLAN PREPARED ON  
20.1.2026  
BASED ON SURVEY SHEETS No.  
3-NW-18A, 18B, 18C & 18D



圖例 LEGEND



申請地點 (界線只作識別用)  
APPLICATION SITE (BOUNDARY FOR  
IDENTIFICATION PURPOSE ONLY)

本摘要圖於2026年1月13日擬備，  
所根據的資料為地政總署於2024年11月7日  
拍得的航攝照片編號E241225C  
EXTRACT PLAN PREPARED ON 13.1.2026  
BASED ON AERIAL PHOTO No. E241225C  
TAKEN ON 7.11.2024 BY  
LANDS DEPARTMENT

航攝照片 AERIAL PHOTO

擬議臨時汽車修理工場、商店及服務行業及附屬露天存放汽車連附屬設施及  
相關填土工程(為期3年)  
新界打鼓嶺丈量約份第82約地段第1114號(部分)及第1115號(部分)  
PROPOSED TEMPORARY VEHICLE REPAIR WORKSHOP, SHOP AND SERVICES AND  
ANCILLARY OPEN STORAGE OF VEHICLE WITH ANCILLARY FACILITIES AND  
ASSOCIATED FILLING OF LAND  
LOTS 1114 (PART) AND 1115 (PART) IN D.D. 82, TA KWU LING, N.T.



規劃署  
Planning Department

參考編號  
REFERENCE No.  
A/NE-TKL/824

圖 PLAN  
A-3





申請地點界線只作識別用  
APPLICATION SITE BOUNDARY FOR IDENTIFICATION PURPOSE ONLY

### 實地照片 SITE PHOTOS

擬議臨時汽車修理工場、商店及服務行業及附屬露天存放汽車連附屬設施及  
相關填土工程(為期3年)

新界打鼓嶺丈量約份第82約地段第1114號(部分)及第1115號(部分)  
PROPOSED TEMPORARY VEHICLE REPAIR WORKSHOP, SHOP AND SERVICES AND  
ANCILLARY OPEN STORAGE OF VEHICLE WITH ANCILLARY FACILITIES AND  
ASSOCIATED FILLING OF LAND  
LOTS 1114 (PART) AND 1115 (PART) IN D.D. 82, TA KWU LING, N.T.



規劃署  
Planning Department

參考編號  
REFERENCE No.  
A/NE-TKL/824

圖 PLAN  
A-4

本圖於2026年1月9日擬備，  
所根據的資料為攝於2025年12月5日  
的實地照片  
PLAN PREPARED ON 9.1.2026  
BASED ON SITE PHOTOS TAKEN ON  
5.12.2025