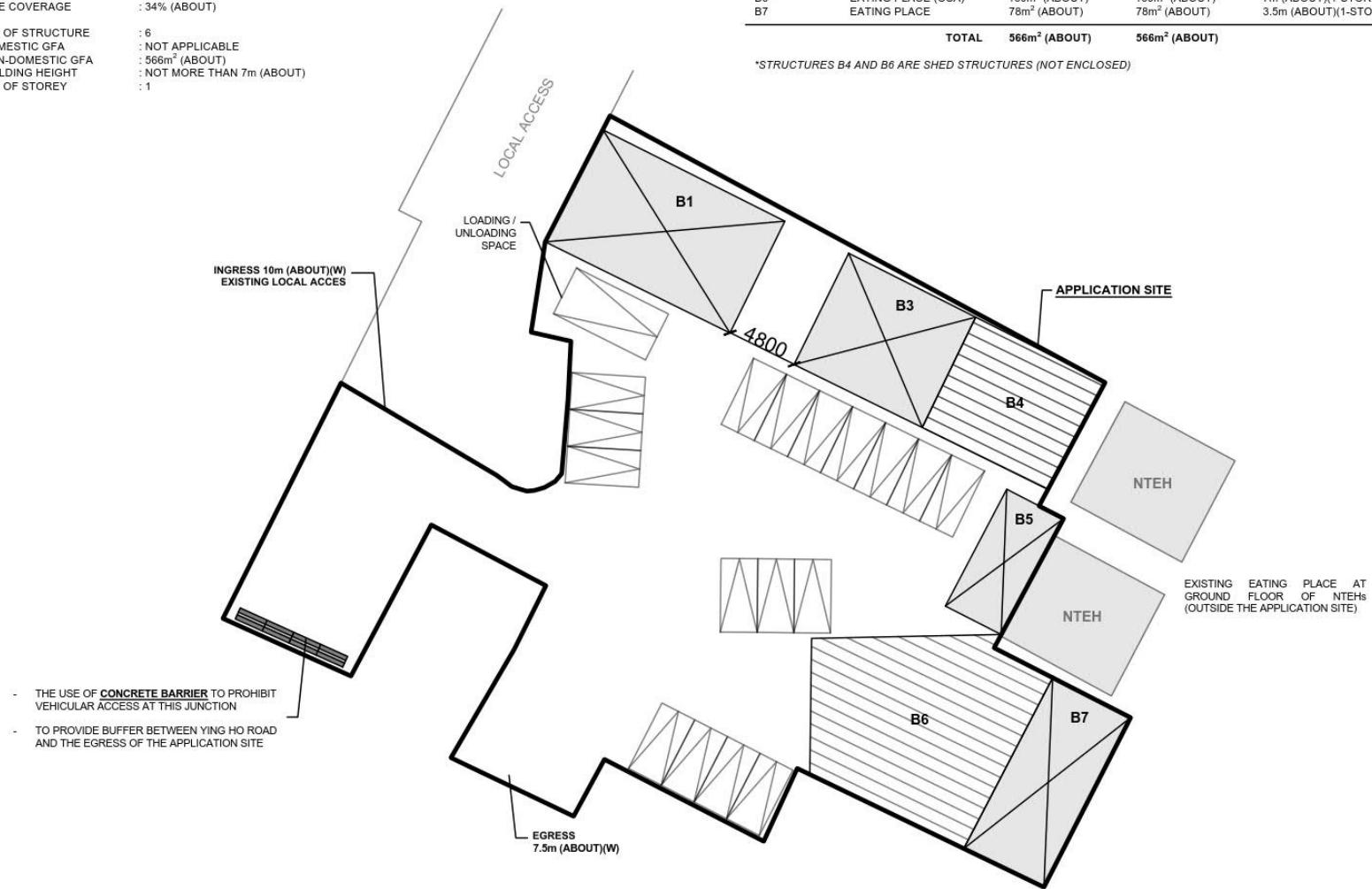
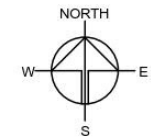


DEVELOPMENT PARAMETERS OF THE APPLICATION SITE

APPLICATION SITE AREA	: 1,650m ² (ABOUT)
COVERED AREA	: 566m ² (ABOUT)
UNCOVERED AREA	: 1,084m ² (ABOUT)
PLOT RATIO	: 0.34 (ABOUT)
SITE COVERAGE	: 34% (ABOUT)
NO. OF STRUCTURE	: 6
DOMESTIC GFA	: NOT APPLICABLE
NON-DOMESTIC GFA	: 566m ² (ABOUT)
BUILDING HEIGHT	: NOT MORE THAN 7m (ABOUT)
NO. OF STOREY	: 1

STRUCTURE	USE	COVERED AREA	GFA	BUILDING HEIGHT
B1	SHOP AND SERVICES	119m ² (ABOUT)	119m ² (ABOUT)	4m (ABOUT)(1-STORY)
B3	SHOP AND SERVICES	81m ² (ABOUT)	81m ² (ABOUT)	4m (ABOUT)(1-STORY)
B4*	EATING PLACE (OSA)	80m ² (ABOUT)	80m ² (ABOUT)	4m (ABOUT)(1-STORY)
B5	EATING PLACE	39m ² (ABOUT)	39m ² (ABOUT)	4.5m (ABOUT)(1-STORY)
B6*	EATING PLACE (OSA)	169m ² (ABOUT)	169m ² (ABOUT)	7m (ABOUT)(1-STORY)
B7	EATING PLACE	78m ² (ABOUT)	78m ² (ABOUT)	3.5m (ABOUT)(1-STORY)
TOTAL		566m ² (ABOUT)	566m ² (ABOUT)	

*STRUCTURES B4 AND B6 ARE SHED STRUCTURES (NOT ENCLOSED)



- THE USE OF **CONCRETE BARRIER** TO PROHIBIT VEHICULAR ACCESS AT THIS JUNCTION
- TO PROVIDE BUFFER BETWEEN YING HO ROAD AND THE EGRESS OF THE APPLICATION SITE

PARKING AND LOADING/UNLOADING (L/U/L) PROVISIONS

NO. OF PRIVATE CAR PARKING SPACE	: 17
DIMENSION OF PARKING SPACE	: 2.5m (W) X 5m (L)
NO. OF L/U/L SPACE FOR LGV	: 1
DIMENSION OF L/U/L SPACE	: 3.5m (W) X 7m (L)

LEGEND

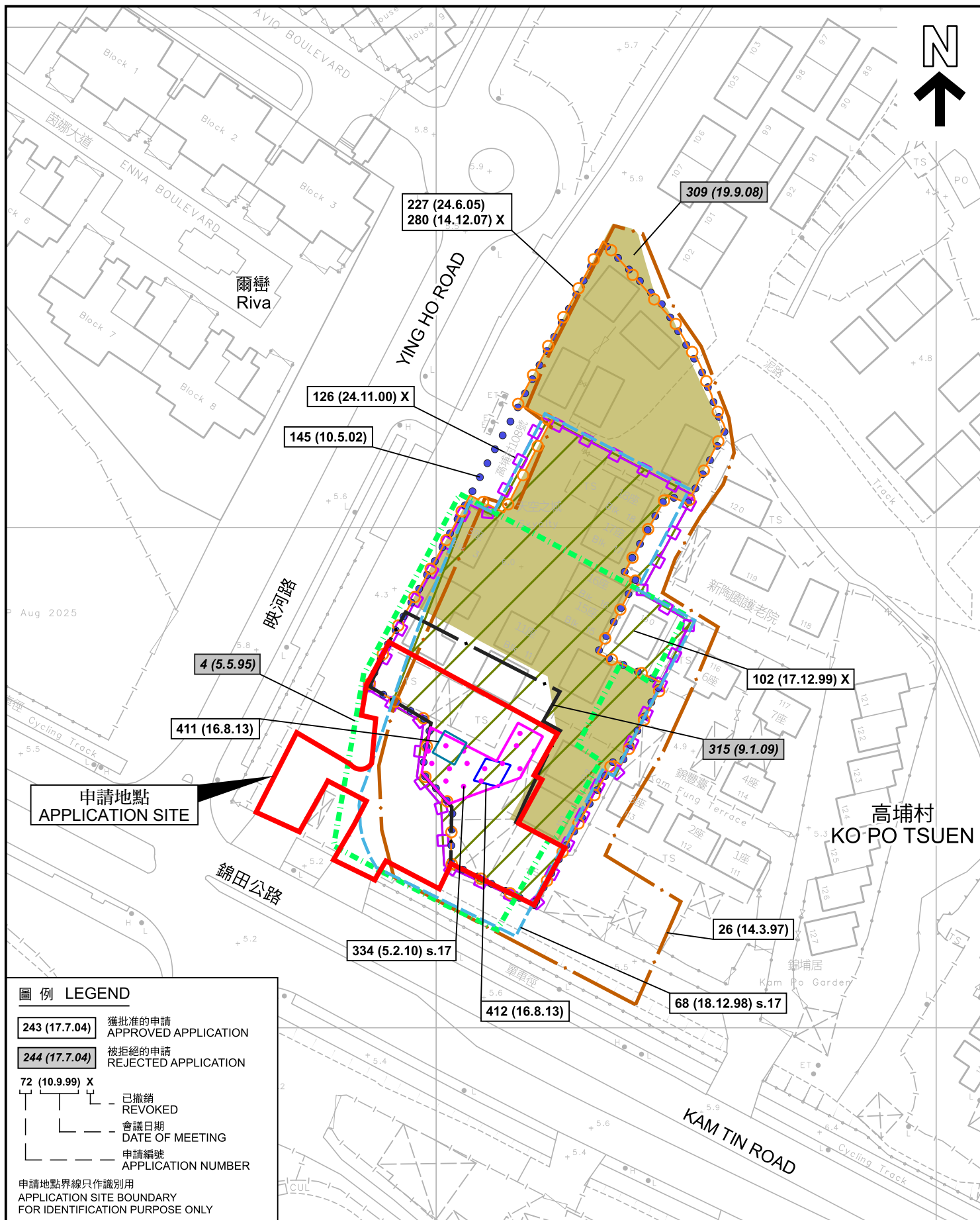
	ENCLOSED STRUCTURE
	SHED STRUCTURE
	PARKING / L/U/L SPACE

Drawing No.	Ver.
PLAN 1	02
Project	
TEMPORARY SHOP AND SERVICES, EATING PLACE AND EATING PLACE (WITH OUTSIDE SEATING ACCOMMODATION OF A RESTAURANT) WITH ANCILLARY PARKING SPACES FOR A PERIOD OF 3 YEARS	
VARIOUS LOTS IN D.D.103 AND ADJOINING GOVERNMENT LAND, KO PO TSUEN, KAM TIN, YUEN LONG	
Drawing Title	
LAYOUT PLAN	
Scale of A4	
1:400	
Drawn	Date
	14.10.2020
Revised	Date
	5.1.2026

(摘錄自申請人於 5.1.2026 呈交的進一步資料)
(Extract from Applicant's Further Information Submitted on 5.1.2026)

參考編號
REFERENCE No.
A/YL-KTN/1124

繪圖
DRAWING
A - 1



圖例 LEGEND

- 243 (17.7.04)** 獲批准的申請
APPROVED APPLICATION
- 244 (17.7.04)** 被拒絕的申請
REJECTED APPLICATION
- 72 (10.9.99) X**
已撤銷
REVOKED
- 會議日期
DATE OF MEETING
- 申請編號
APPLICATION NUMBER

申請地點界線只作識別用
APPLICATION SITE BOUNDARY
FOR IDENTIFICATION PURPOSE ONLY

先前申請圖 PREVIOUS APPLICATION PLAN (臨時露天貯物及停車場 TEMPORARY OPEN STORAGE & VEHICLE PARK)

臨時商店及服務行業及食肆連附屬停車位(為期3年)
元朗錦田高埔村丈量約份第103約多個地段和毗連政府土地
TEMPORARY SHOP AND SERVICES AND EATING PLACE
WITH ANCILLARY PARKING FOR A PERIOD OF 3 YEARS
VARIOUS LOTS IN D.D. 103 AND ADJOINING GOVERNMENT LAND,
KO PO TSUEN, KAM TIN, YUEN LONG

SCALE 1:1 000 比例尺
米 20 0 20 40 米
METRES

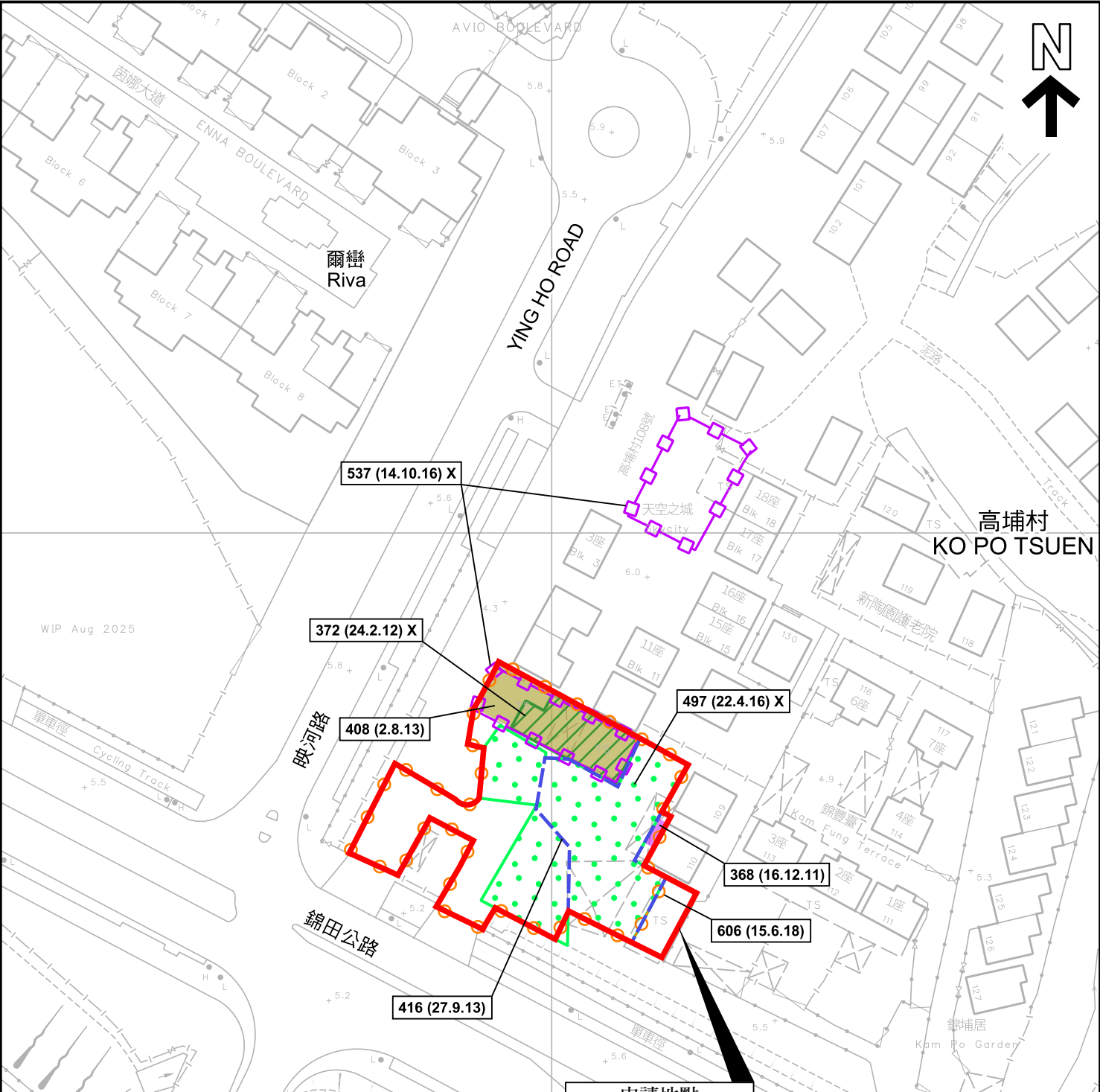


規劃署
Planning Department

參考編號
REFERENCE No.
A/YL-KTN/1124

圖 PLAN
A-1b

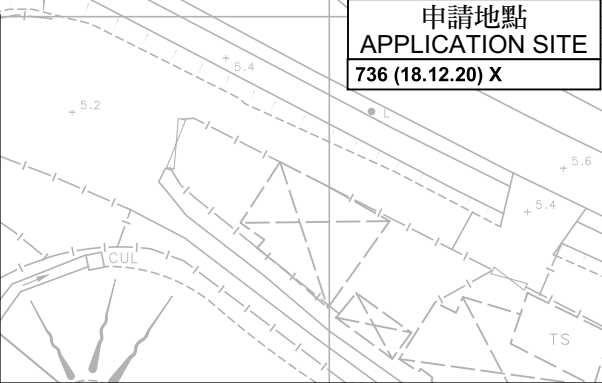
本摘要圖於2026年1月20日擬備，
所根據的資料為測量圖編號
6D 及 11B
EXTRACT PLAN PREPARED ON 20.1.2026
BASED ON SURVEY SHEETS No.
6D & 11B



圖例 LEGEND

- 243 (17.7.04) 獲批准的申請
APPROVED APPLICATION
- 244 (17.7.04) 被拒絕的申請
REJECTED APPLICATION
- 72 (10.9.99) X
已撤銷
REVOKED
- 會議日期
DATE OF MEETING
- 申請編號
APPLICATION NUMBER

申請地點界線只作識別用
APPLICATION SITE BOUNDARY
FOR IDENTIFICATION PURPOSE ONLY



先前申請圖 PREVIOUS APPLICATION PLAN
(臨時食肆及商店和服務行業 TEMPORARY EATING PLACE & SHOP AND SERVICES)

臨時商店及服務行業及食肆連附屬停車位(為期3年)
元朗錦田高埔村丈量約份第103約多個地段和毗連政府土地
TEMPORARY SHOP AND SERVICES AND EATING PLACE
WITH ANCILLARY PARKING FOR A PERIOD OF 3 YEARS
VARIOUS LOTS IN D.D. 103 AND ADJOINING GOVERNMENT LAND,
KO PO TSUEN, KAM TIN, YUEN LONG

SCALE 1 : 1 000 比例尺

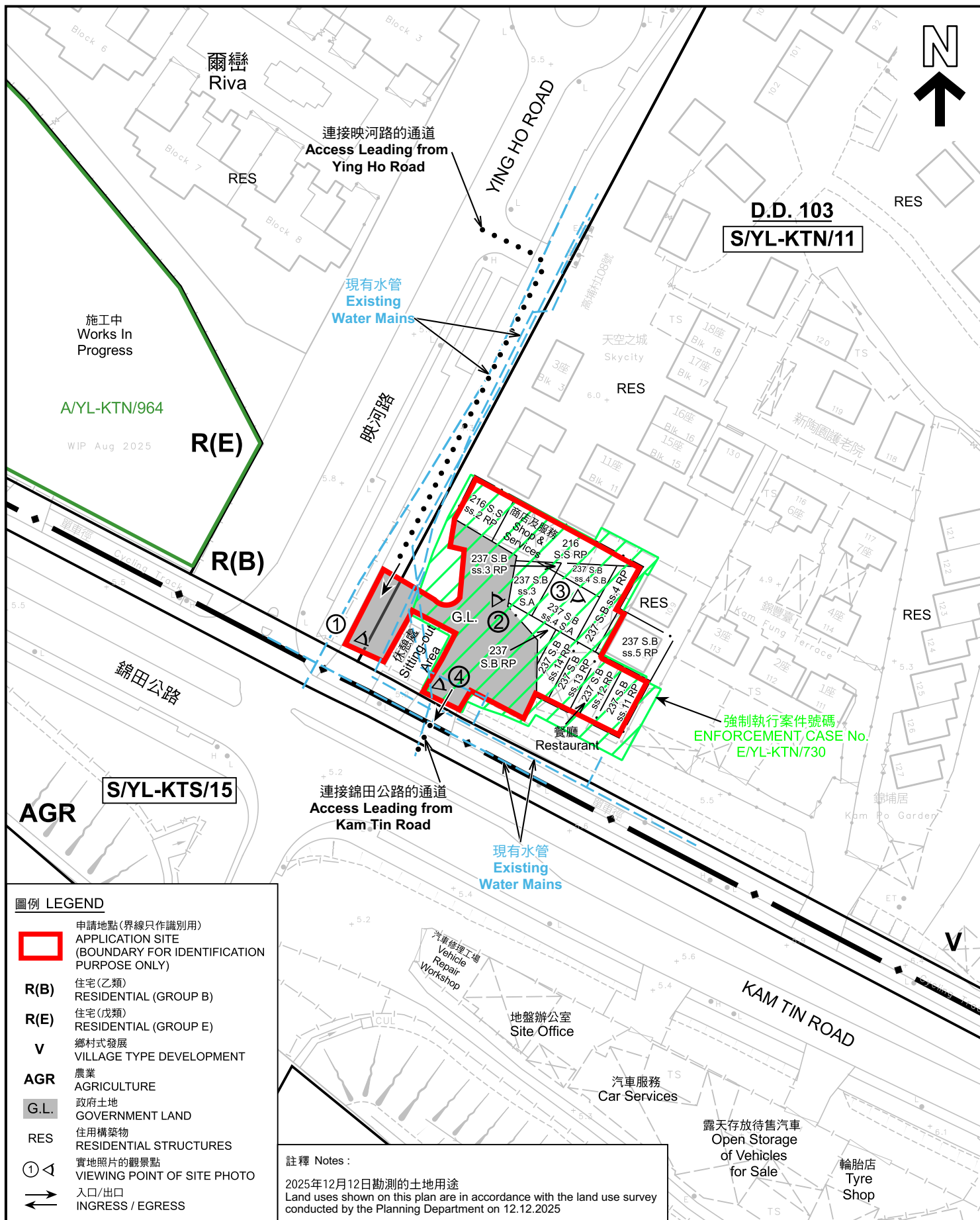
米 20 0 20 40 米
METRES



規劃署
Planning Department

參考編號
REFERENCE No.
A/YL-KTN/1124

圖 PLAN
A-1c



圖例 LEGEND



申請地點(界線只作識別用)
APPLICATION SITE
(BOUNDARY FOR IDENTIFICATION
PURPOSE ONLY)

R(B) 住宅(乙類)
RESIDENTIAL (GROUP B)

R(E) 住宅(戊類)
RESIDENTIAL (GROUP E)

V 鄉村式發展
VILLAGE TYPE DEVELOPMENT

AGR 農業
AGRICULTURE

G.L. 政府土地
GOVERNMENT LAND

RES 住用構築物
RESIDENTIAL STRUCTURES

① 實地照片的觀景點
VIEWING POINT OF SITE PHOTO

↔ 入口/出口
INGRESS / EGRESS

註釋 Notes :

2025年12月12日勘測的土地用途
Land uses shown on this plan are in accordance with the land use survey
conducted by the Planning Department on 12.12.2025

平面圖 SITE PLAN

臨時商店及服務行業及食肆連附屬停車位(為期3年)
元朗錦田高埔村丈量約份第103約多個地段和毗連政府土地
TEMPORARY SHOP AND SERVICES AND EATING PLACE
WITH ANCILLARY PARKING FOR A PERIOD OF 3 YEARS
VARIOUS LOTS IN D.D. 103 AND ADJOINING GOVERNMENT LAND,
KO PO TSUEN, KAM TIN, YUEN LONG

SCALE 1 : 1 000 比例尺

米 20 0 20 40 米
METRES

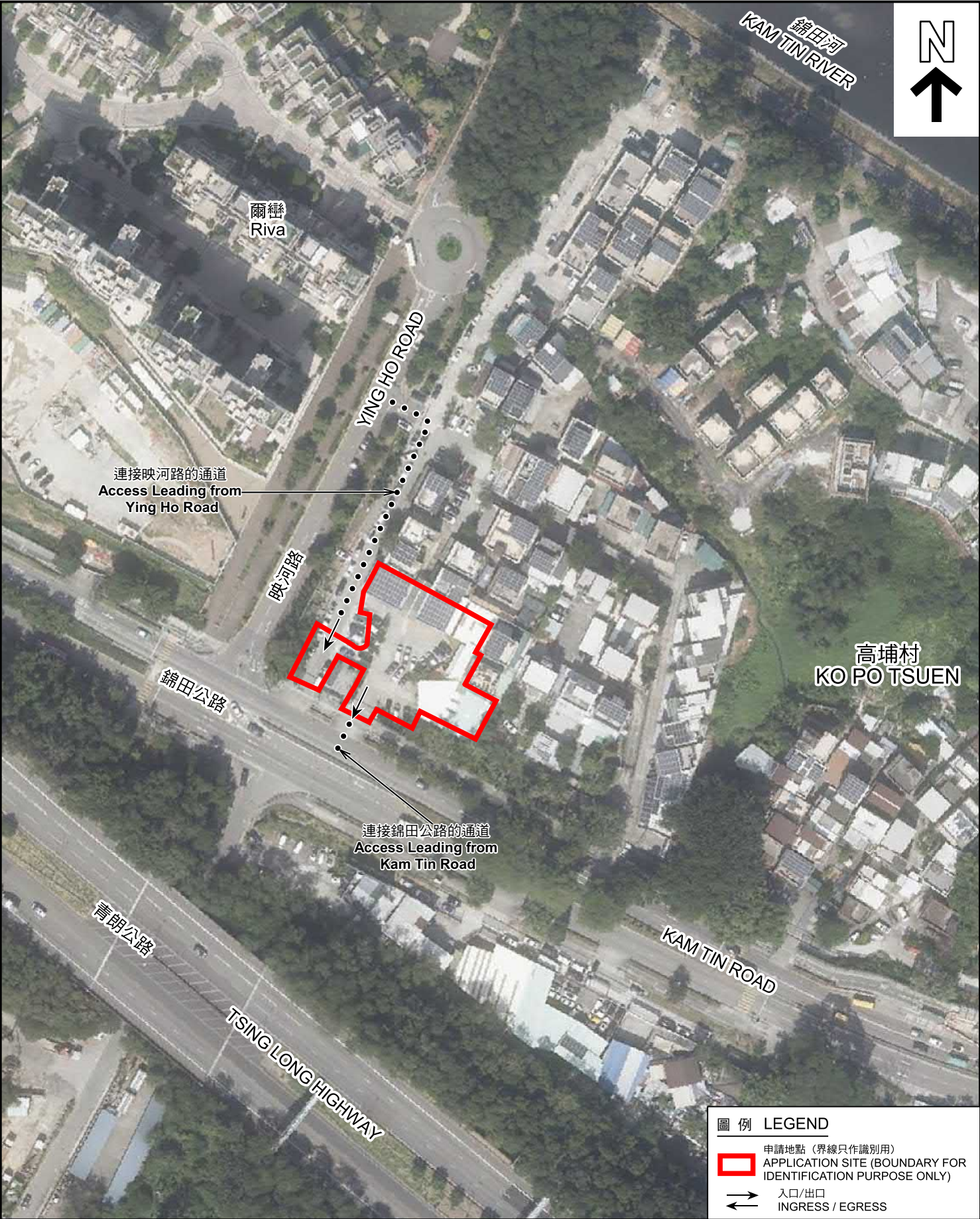


規劃署
Planning Department

參考編號
REFERENCE No.
A/YL-KTN/1124

圖 PLAN
A-2

本摘要圖於2026年1月14日擬備，
所根據的資料為測量圖編號
6-NE-6D 及 11B
EXTRACT PLAN PREPARED ON 14.1.2026
BASED ON SURVEY SHEETS No.
6-NE-6D & 11B



圖例 LEGEND

-  申請地點 (界線只作識別用)
APPLICATION SITE (BOUNDARY FOR IDENTIFICATION PURPOSE ONLY)
-  入口/出口
INGRESS / EGRESS

航攝照片 AERIAL PHOTO

本摘要圖於2026年1月14日擬備，
所根據的資料為地政總署於2024年10月24日
拍得的航攝照片編號 E237465C
EXTRACT PLAN PREPARED ON 14.1.2026
BASED ON AERIAL PHOTO No.
E237465C TAKEN ON 24.10.2024
BY LANDS DEPARTMENT

臨時商店及服務行業及食肆連附屬停車位(為期3年)
元朗錦田高埔村丈量約份第103約多個地段和毗連政府土地
TEMPORARY SHOP AND SERVICES AND EATING PLACE
WITH ANCILLARY PARKING FOR A PERIOD OF 3 YEARS
VARIOUS LOTS IN D.D. 103 AND ADJOINING GOVERNMENT LAND,
KO PO TSUEN, KAM TIN, YUEN LONG



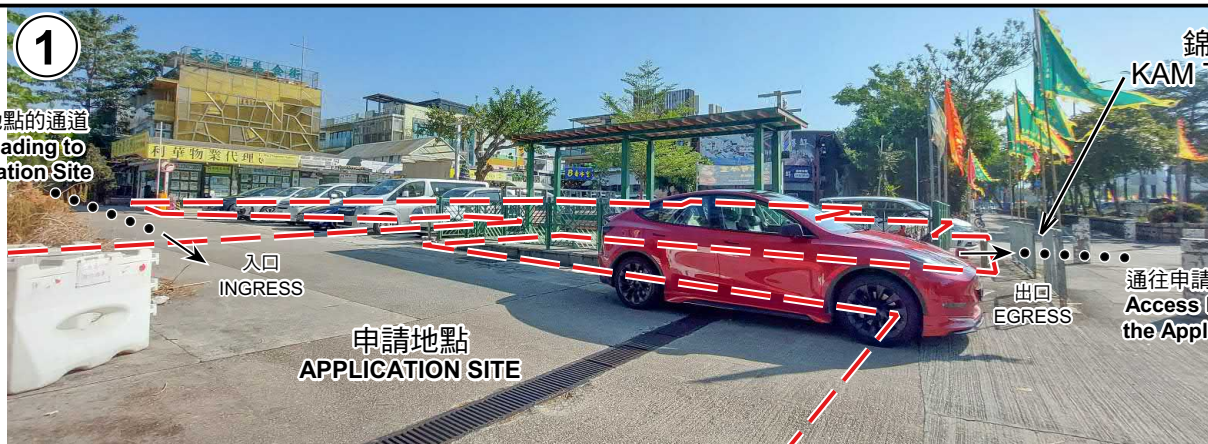
規劃署
Planning Department

參考編號
REFERENCE No.
A/YL-KTN/1124

圖 PLAN
A-3

1

通往申請地點的通道
Access Leading to
the Application Site



錦田公路
KAM TIN ROAD

通往申請地點的通道
Access Leading to
the Application Site

2



3



4



申請地點界線只作識別用 APPLICATION SITE BOUNDARY FOR IDENTIFICATION PURPOSE ONLY

實地照片 SITE PHOTOS

本圖於2026年1月14日擬備，所根據的資料為攝於2025年12月12日的實地照片
PLAN PREPARED ON 14.1.2026
BASED ON SITE PHOTOS
TAKEN ON 12.12.2025

臨時商店及服務行業及食肆連附屬停車位(為期3年)
元朗錦田高埔村丈量約份第103約多個地段和毗連政府土地
TEMPORARY SHOP AND SERVICES AND EATING PLACE
WITH ANCILLARY PARKING FOR A PERIOD OF 3 YEARS
VARIOUS LOTS IN D.D. 103 AND ADJOINING GOVERNMENT LAND,
KO PO TSUEN, KAM TIN, YUEN LONG



規劃署
Planning Department

參考編號
REFERENCE No.
A/YL-KTN/1124

圖 PLAN
A-4