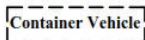


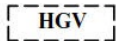
## Legend



Vehicular Ingress / Egress



Parking space for container vehicle  
(16m (L) x 3.5m (W))



Parking space for heavy goods vehicle  
(11m (L) x 3.5m (W))

No.	Uses	Floor Area (about)	Covered Area (about)	Storeys	Height
1	Warehouse with Ancillary Office	214 m <sup>2</sup>	214 m <sup>2</sup>	1	9m
2	Warehouse with Ancillary Office	743 m <sup>2</sup>	743 m <sup>2</sup>	1	9m
3	Warehouse with Ancillary Office	2,137 m <sup>2</sup>	2,137 m <sup>2</sup>	1	14m
4	Toilet	18 m <sup>2</sup>	18 m <sup>2</sup>	1	3m
5	Pump Room	20 m <sup>2</sup>	20 m <sup>2</sup>	1	3m
6	Meter room	5 m <sup>2</sup>	5 m <sup>2</sup>	1	3m
7	Meter room	8 m <sup>2</sup>	8 m <sup>2</sup>	1	3m
Total		<u>3,145 m<sup>2</sup></u>	<u>3,145 m<sup>2</sup></u>		

~~1:1000~~

### Proposed Layout Plan

Goldrich Planners &  
Surveyors Ltd.

August 2025

Lot 29(part), 33(part) and 35(part) in DD.111  
and adjoining government land  
Yuen Long, N.T.

Plan 3a  
( P 25025 )

(摘錄自申請人於17. 10. 2025呈交的進一步資料)  
(Extract from Applicant's Further  
Information Submitted on 17.10.2025)

參考編號  
REFERENCE No.  
A/YL-PH/1077

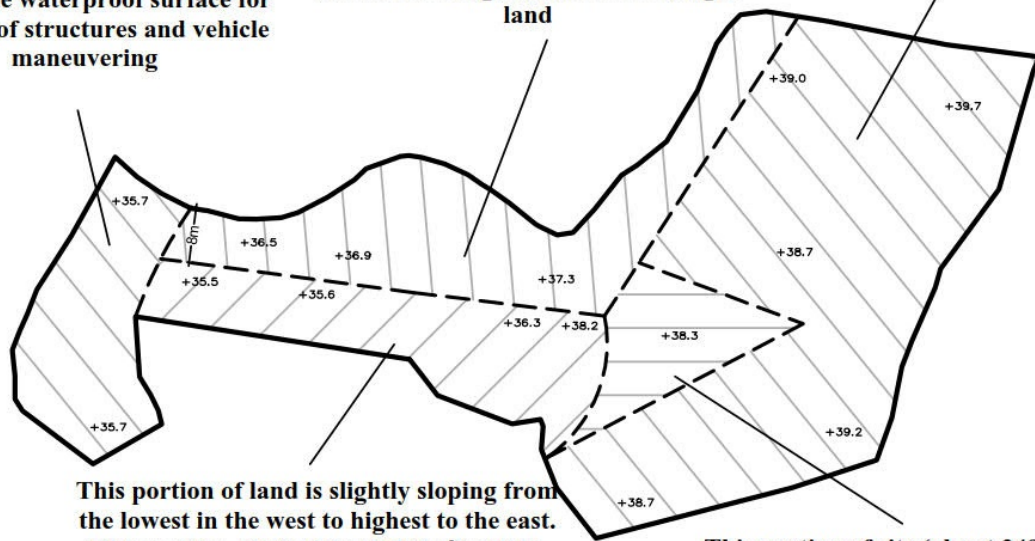
繪圖  
DRAWING  
A - 1



This portion of site (about 597m<sup>2</sup>) will be paved with concrete at a depth of 0.7m (from 35.7mPD to 36.4mPD) to provide waterproof surface for erection of structures and vehicle maneuvering

This portion of land is slightly sloping from the lowest in the west to highest to the east.  
This portion of site (about 1,099m<sup>2</sup>) has been paved with concrete at a depth of 1m to provide waterproof surface for erection of structures and vehicle maneuvering which serves regularization of filling of land

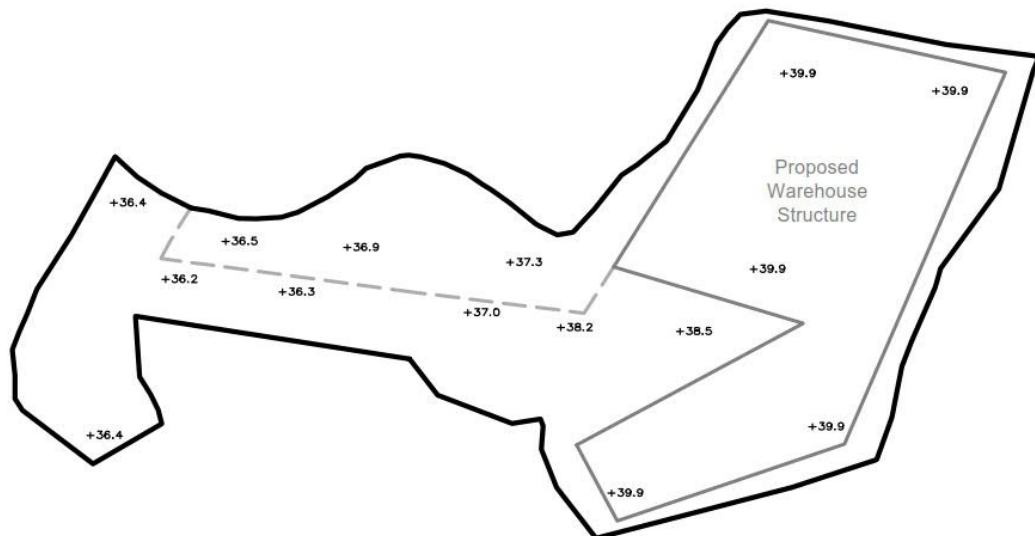
This portion of site (about 2,474m<sup>2</sup>) will be paved with concrete at a maximum depth of about 1.2m (highest to 39.9mPD) to provide flat waterproof surface for erection of warehouse structure



This portion of land is slightly sloping from the lowest in the west to highest to the east.  
This portion of site (about 767m<sup>2</sup>) will be paved with concrete at a depth of 0.7m to provide waterproof surface for erection of structures and vehicle maneuvering

This portion of site (about 349m<sup>2</sup>) will be paved with concrete at a depth of 0.2m (from 38.3mPD to 38.5mPD) for vehicle maneuvering

### Existing Ground Level



### Ground Level After Filling of Land

Note: The western side of the site is naturally at a lower ground level and the eastern side is naturally at a higher ground level.  
Thus the ground level in the west is lower than the east.  
There is a sloping road in the middle that connects the land between the west and the east.

<del>1:1000</del>	<b>Plan Showing Existing Ground Level and Ground Level After Filling of Land</b>	<b>Goldrich Planners &amp; Surveyors Ltd.</b>
<b>August 2025</b>	<b>Lot 29(part), 33(part) and 35(part) in DD.111 and adjoining government land Yuen Long, N.T.</b>	<b>Plan 5a ( P 25025 )</b>

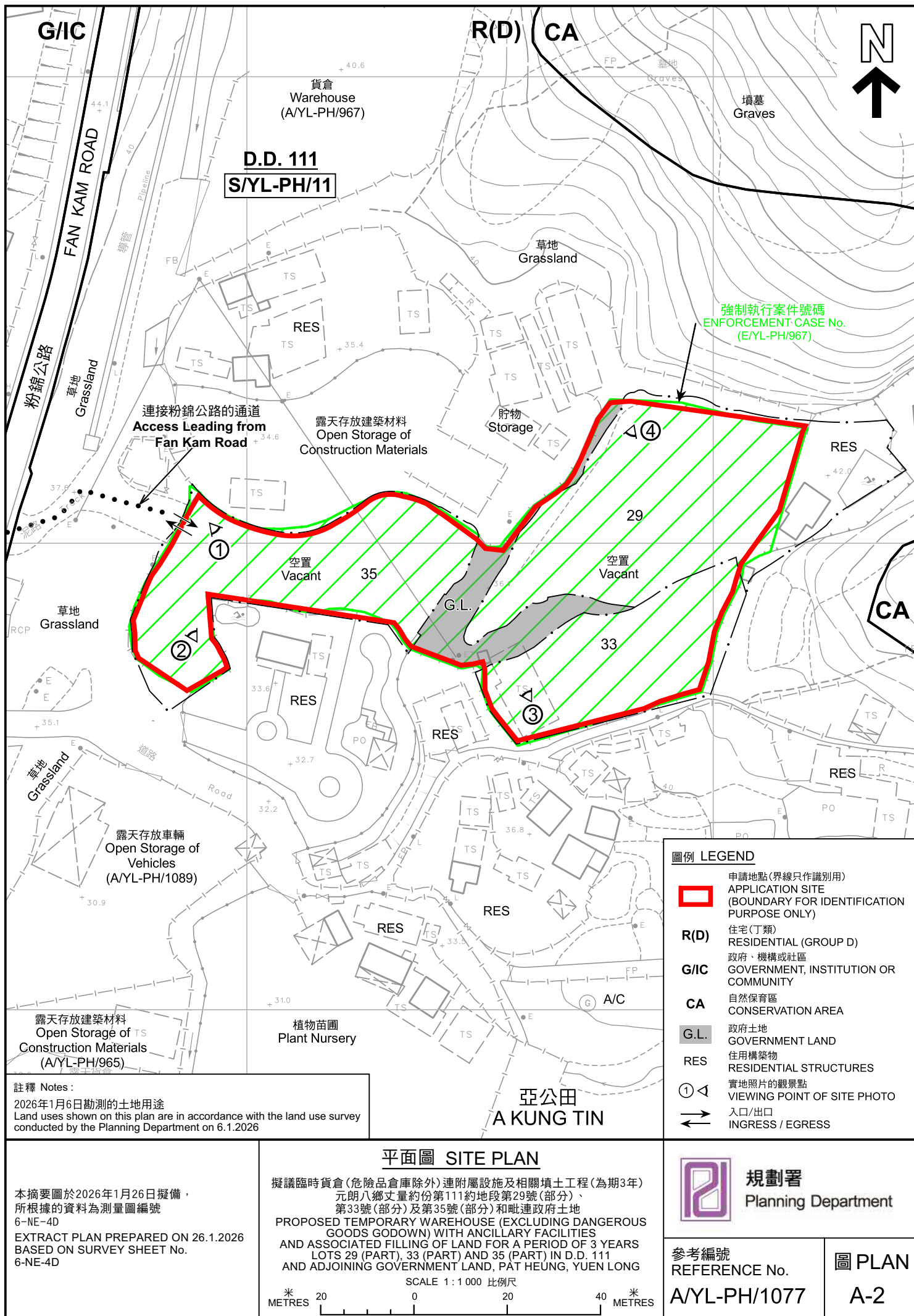
(摘錄自申請人於17. 10. 2025呈交的進一步資料)  
(Extract from Applicant's Further Information Submitted on 17.10.2025)

參考編號  
REFERENCE No.  
A/YL-PH/1077

繪圖  
DRAWING  
A - 2




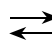








圖例 LEGEND

-  申請地點 (界線只作識別用)  
APPLICATION SITE (BOUNDARY FOR IDENTIFICATION PURPOSE ONLY)
-  入口/出口  
INGRESS / EGRESS

本摘要圖於2026年1月26日擬備，  
所根據的資料為地政總署於2024年10月24日  
拍得的航攝照片編號E236991C  
EXTRACT PLAN PREPARED ON 26.1.2026  
BASED ON AERIAL PHOTO No.  
E236991C TAKEN ON 24.10.2024  
BY LANDS DEPARTMENT

航攝照片 AERIAL PHOTO

擬議臨時貨倉(危險品倉庫除外)連附屬設施及相關填土工程(為期3年)  
元朗八鄉丈量約份第111約地段第29號(部分)、  
第33號(部分)及第35號(部分)和毗連政府土地  
PROPOSED TEMPORARY WAREHOUSE (EXCLUDING DANGEROUS  
GOODS GODOWN) WITH ANCILLARY FACILITIES  
AND ASSOCIATED FILLING OF LAND FOR A PERIOD OF 3 YEARS  
LOTS 29 (PART), 33 (PART) AND 35 (PART) IN D.D. 111  
AND ADJOINING GOVERNMENT LAND, PAT HEUNG, YUEN LONG



規劃署  
Planning Department

參考編號  
REFERENCE No.  
A/YL-PH/1077

圖 PLAN  
A-3





申請地點界線只作識別用 APPLICATION SITE BOUNDARY FOR IDENTIFICATION PURPOSE ONLY

### 實地照片 SITE PHOTOS

本圖於2026年1月12日擬備，所根據的資料為攝於2026年1月6日的實地照片  
PLAN PREPARED ON 12.1.2026  
BASED ON SITE PHOTOS  
TAKEN ON 6.1.2026

擬議臨時貨倉(危險品倉庫除外)連附屬設施及相關填土工程(為期3年)  
元朗八鄉丈量約份第111約地段第29號(部分)、  
第33號(部分)及第35號(部分)和毗連政府土地  
PROPOSED TEMPORARY WAREHOUSE (EXCLUDING DANGEROUS  
GOODS GODOWN) WITH ANCILLARY FACILITIES  
AND ASSOCIATED FILLING OF LAND FOR A PERIOD OF 3 YEARS  
LOTS 29 (PART), 33 (PART) AND 35 (PART) IN D.D. 111  
AND ADJOINING GOVERNMENT LAND, PAT HEUNG, YUEN LONG



規劃署  
Planning Department

參考編號  
REFERENCE No.  
A/YL-PH/1077

圖 PLAN  
A-4