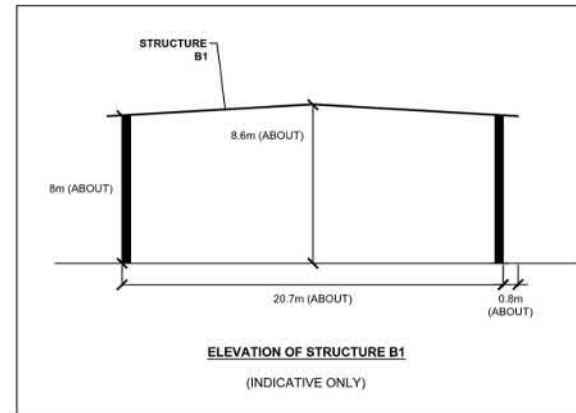
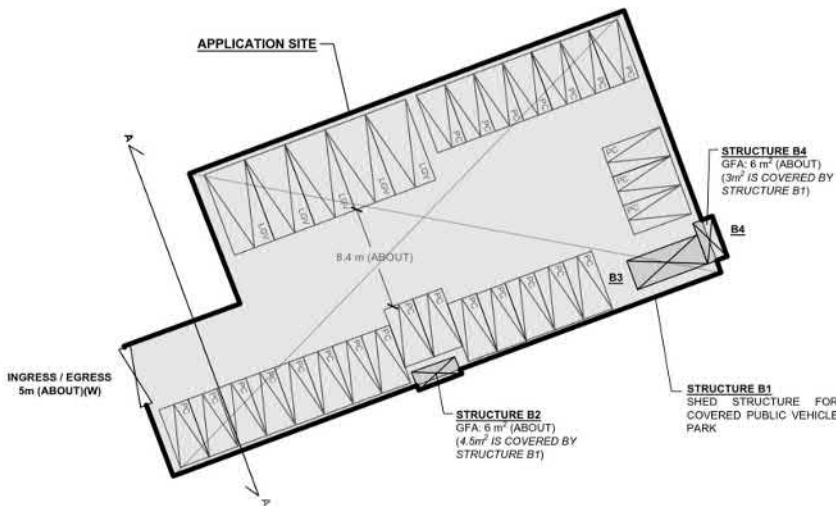
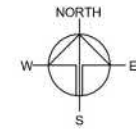


**DEVELOPMENT PARAMETERS**

APPLICATION SITE AREA	: 973.5 m <sup>2</sup>	(ABOUT)
COVERED AREA	: 973.5 m <sup>2</sup>	(ABOUT)
UNCOVERED AREA	: NOT APPLICABLE	
PLOT RATIO	: 1	(ABOUT)
SITE COVERAGE	: 100 %	(ABOUT)
NO. OF STRUCTURE	: 4	
DOMESTIC GFA	: NOT APPLICABLE	
NON-DOMESTIC GFA	: 973.5 m <sup>2</sup>	(ABOUT)
TOTAL GFA	: 973.5 m <sup>2</sup>	(ABOUT)
BUILDING HEIGHT	: 2.8 m - 8.6 m	(ABOUT)
NO. OF STOREY	: 1	

STRUCTURE	USE	COVERED AREA	GFA	BUILDING HEIGHT
B1	COVERED PUBLIC VEHICLE PARK	969 m <sup>2</sup> (ABOUT)	969 m <sup>2</sup> (ABOUT)	8.6 m (ABOUT)(1-STOREY)
B2	CARETAKER OFFICE	1.5 m <sup>2</sup> (ABOUT) <sup>†</sup>	1.5 m <sup>2</sup> (ABOUT) <sup>†</sup>	2.8 m (ABOUT)(1-STOREY)
B3	STORAGE OF TRAFFIC CONES AND BARRIERS	COVERED BY B1	COVERED BY B1	2.8 m (ABOUT)(1-STOREY)
B4	METER ROOM	3 m <sup>2</sup> (ABOUT) <sup>†</sup>	3 m <sup>2</sup> (ABOUT) <sup>†</sup>	3 m (ABOUT)(1-STOREY)
<b>TOTAL</b>		<b>973.5 m<sup>2</sup> (ABOUT)</b>	<b>973.5 m<sup>2</sup> (ABOUT)</b>	

\*STRUCTURE B1 IS A SHED STRUCTURE (NOT ENCLOSED)  
 †STRUCTURE B2 AND B4 ARE PARTIALLY COVERED BY STRUCTURE B1



**PARKING PROVISIONS**

NO. OF PRIVATE CAR PARKING SPACE	: 25
DIMENSION OF PARKING SPACE	: 2.5m (W) X 5m (L)
NO. OF LIGHT GOODS VEHICLE PARKING SPACE	: 5
DIMENSION OF PARKING SPACE	: 3.5m (W) X 7m (L)

SITE BOUNDARY FOR IDENTIFICATION PURPOSE ONLY.

**LEGEND**

- APPLICATION SITE
- STRUCTURE (ENCLOSED)
- STRUCTURE (SHED)
- PARKING SPACE (PC)
- PARKING SPACE (LGV)
- INGRESS / EGRESS

PLANNING CONSULTANT



PROJECT  
 TEMPORARY PUBLIC VEHICLE PARK ( EXCLUDING CONTAINER VEHICLE) WITH ANCILLARY FACILITIES FOR A PERIOD OF 5 YEARS

SITE LOCATION  
 VARIOUS LOTS IN D.D. 129 AND ADJOINING GOVERNMENT LAND, LAU FAU SHAN, YUEN LONG, NEW TERRITORIES

SCALE



DRAWN BY MN	DATE 12.1.2026
REVIEWED BY	DATE
APPROVED BY	DATE

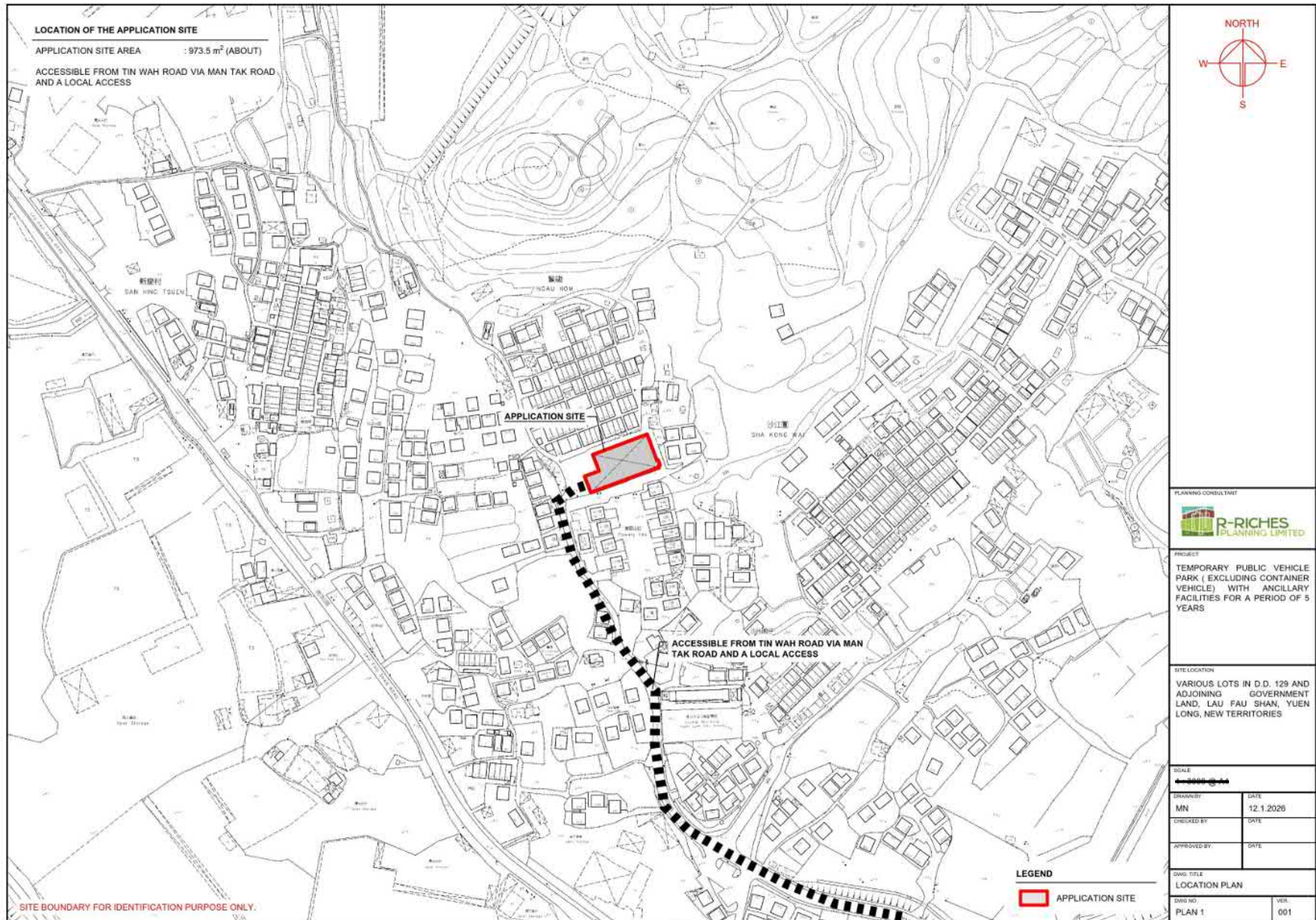
DWG. TITLE  
 LAYOUT PLAN

DWG. NO. PLAN 4	VER. 001
--------------------	-------------

參考編號  
 REFERENCE No.  
 A/YL-LFS/603

繪圖 DRAWING  
 A-1

(摘錄自申請人於24. 2. 2026呈交的申請書)  
 (Extract from Applicant's  
 Submission of 24.2.2026)



參考編號  
 REFERENCE No.  
 A/YL-LFS/603

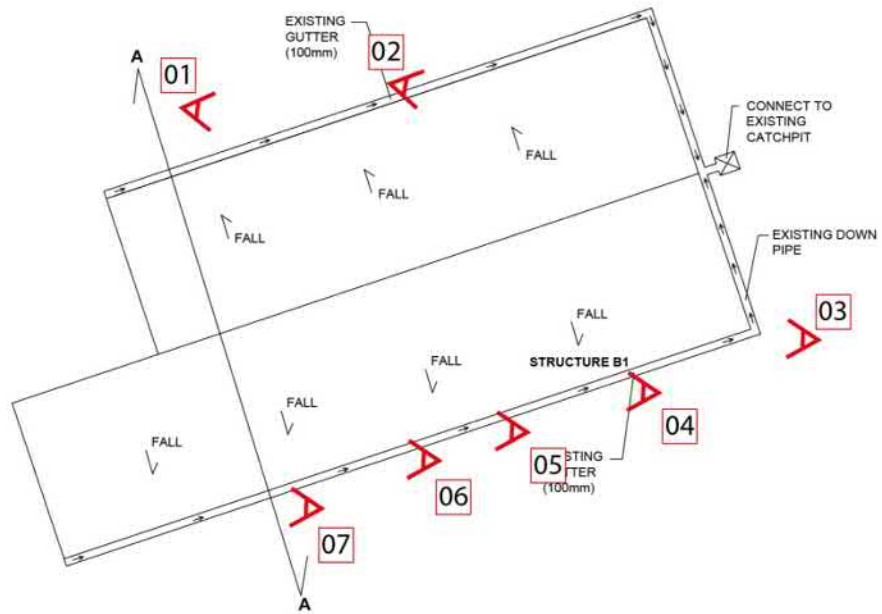
繪圖 DRAWING  
 A-2

(摘錄自申請人於24. 2. 2026呈交的申請書)  
 (Extract from Applicant's  
 Submission of 24.2.2026)

Compliance with Approval Conditions (e)

Proposed Temporary Public Vehicle Park (Private Cars and Light Goods Vehicles) for a Period of 3 Years in "Village Type Development" zone, Various Lots in D.D. 129 and Adjoining Government Land, Lau Fau Shan, Yuen Long, New Territories

(S.16 Planning Application No. A/YL-LFS/483)



參考編號 REFERENCE No. A/YL-LFS/603	繪圖 DRAWING A-3
---------------------------------------	-------------------

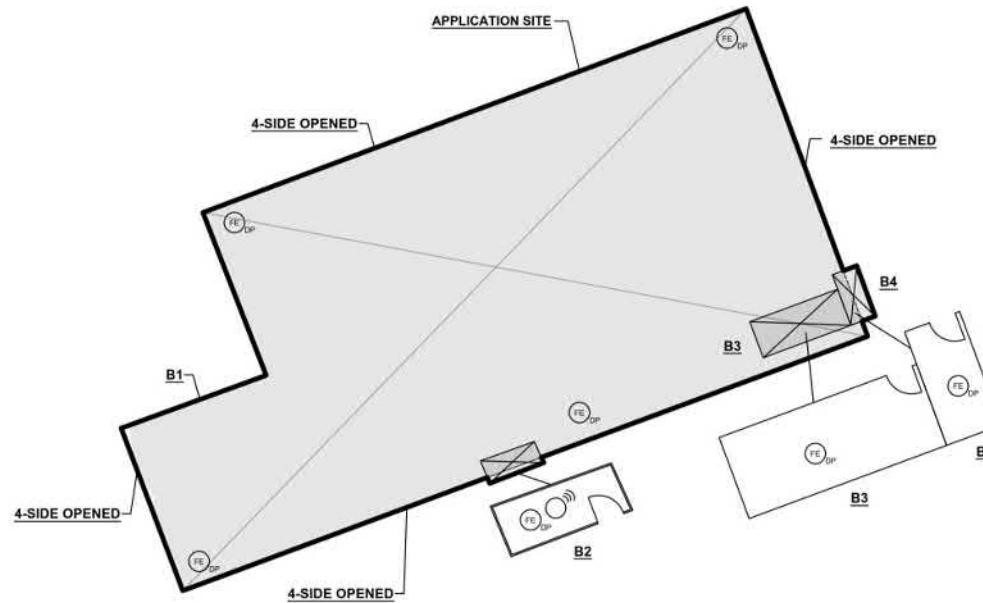
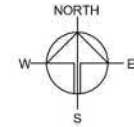
(摘錄自申請人於24. 2. 2026呈交的申請書)  
(Extract from Applicant's  
Submission of 24.2.2026)

**DEVELOPMENT PARAMETERS**

APPLICATION SITE AREA	: 973.5 m <sup>2</sup>	(ABOUT)
COVERED AREA	: 973.5 m <sup>2</sup>	(ABOUT)
UNCOVERED AREA	: NOT APPLICABLE	
PLOT RATIO	: 1	(ABOUT)
SITE COVERAGE	: 100%	(ABOUT)
NO. OF STRUCTURE	: 4	
DOMESTIC GFA	: NOT APPLICABLE	
NON-DOMESTIC GFA	: 973.5 m <sup>2</sup>	(ABOUT)
TOTAL GFA	: 973.5 m <sup>2</sup>	(ABOUT)
BUILDING HEIGHT	: 2.8 m - 8.6 m	(ABOUT)
NO. OF STOREY	: 1	

STRUCTURE	USE	COVERED AREA	GFA	BUILDING HEIGHT
B1	COVERED PUBLIC VEHICLE PARK	969 m <sup>2</sup> (ABOUT)	969 m <sup>2</sup> (ABOUT)	8.6 m (ABOUT)(1-STOREY)
B2	CARETAKER OFFICE	1.5 m <sup>2</sup> (ABOUT) <sup>f</sup>	1.5 m <sup>2</sup> (ABOUT) <sup>f</sup>	2.8 m (ABOUT)(1-STOREY)
B3	STORAGE OF TRAFFIC CONES AND BARRIERS	COVERED BY B1	COVERED BY B1	2.8 m (ABOUT)(1-STOREY)
B4	METER ROOM	3 m <sup>2</sup> (ABOUT) <sup>f</sup>	3 m <sup>2</sup> (ABOUT) <sup>f</sup>	3 m (ABOUT)(1-STOREY)
<b>TOTAL</b>		<b>973.5 m<sup>2</sup> (ABOUT)</b>	<b>973.5 m<sup>2</sup> (ABOUT)</b>	

<sup>a</sup>STRUCTURE B1 IS A SHED STRUCTURE (4 SIDE OPENED)  
<sup>f</sup>STRUCTURE B2 AND B4 ARE PARTIALLY COVERED BY STRUCTURE B1



**FIRE SERVICE INSTALLATIONS**

- STAND-ALONE FIRE DETECTOR
- 4 KG DRY POWDER TYPE FIRE EXTINGUISHER

**FS NOTES:**

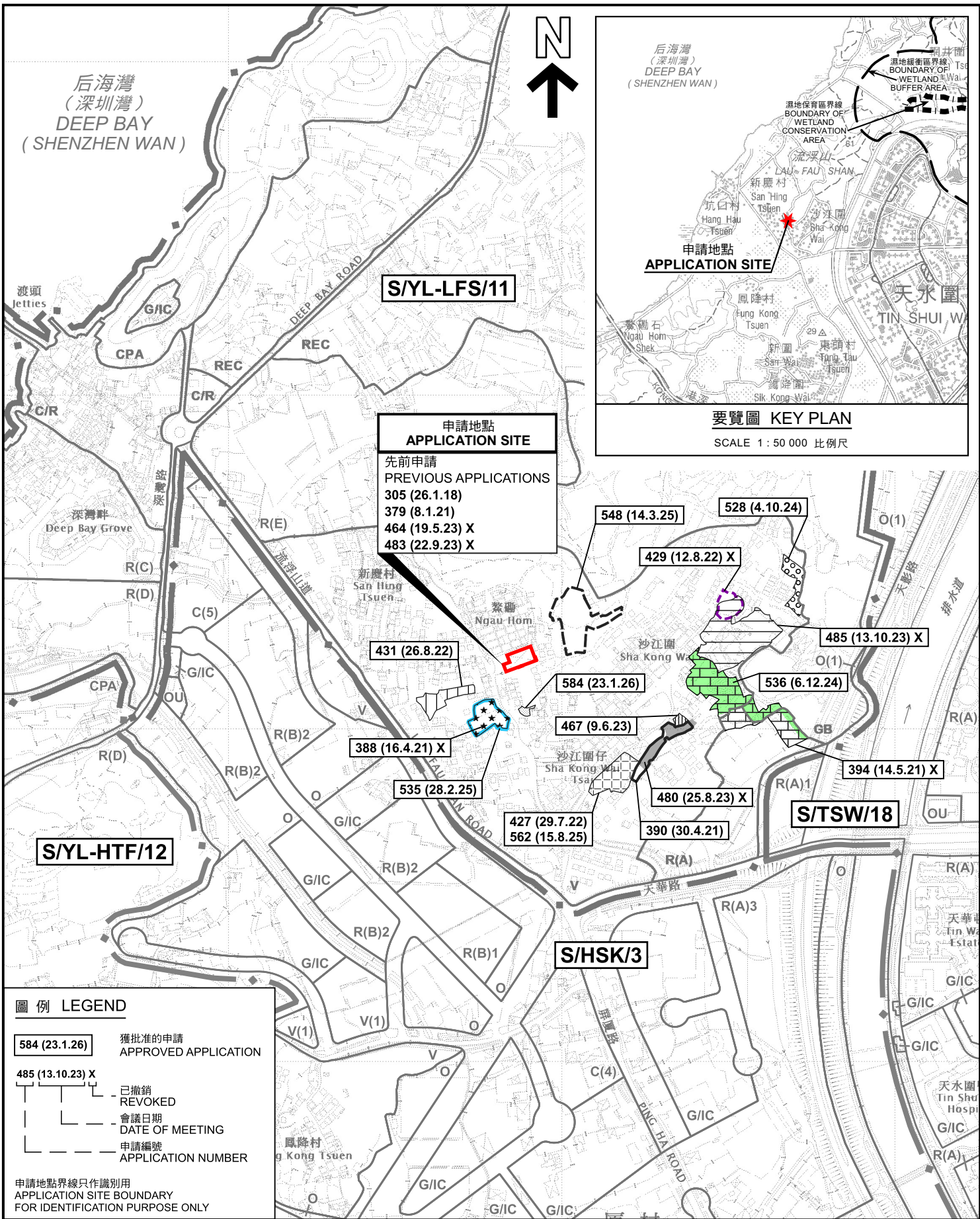
- 1) SUFFICIENT STAND-ALONE FIRE DETECTOR SHALL BE PROVIDED THROUGHOUT THE ENTIRE BUILDING IN ACCORDANCE WITH "STAND-ALONE FIRE DETECTOR GENERAL GUIDELINES ON PURCHASE, INSTALLATION & MAINTENANCE [SEP 2021]".
- 2) IN RELATION TO 1) ABOVE, WHERE TWO OR MORE STAND-ALONE FIRE DETECTORS ARE INSTALLED IN AN ENCLOSED STRUCTURE, ALL STAND-ALONE DETECTORS SHALL BE INTERCONNECTED (EITHER WIRED OR WIRELESSLY) SUCH THAT WHEN ONE OF THE STAND-ALONE FIRE DETECTOR IS TRIGGERED, ALL CONNECTED STAND-ALONE FIRE DETECTORS SHALL SOUND AN ALARM SIMULTANEOUSLY.
- 3) PORTABLE HAND-OPERATED APPROVED APPLIANCE SHALL BE PROVIDED AS REQUIRED BY OCCUPANCY.
- 4) ACCESS IS PROVIDED FOR EMERGENCY VEHICLE TO REACH 30m OF ALL PART OF STRUCTURES.

SITE BOUNDARY FOR IDENTIFICATION PURPOSE ONLY.

PLANNING CONSULTANT	
PROJECT	
TEMPORARY PUBLIC VEHICLE PARK ( EXCLUDING CONTAINER VEHICLE) WITH ANCILLARY FACILITIES FOR A PERIOD OF 5 YEARS	
SITE LOCATION	
VARIOUS LOTS IN D.D. 129 AND ADJOINING GOVERNMENT LAND, LAU FAU SHAN, YUEN LONG, NEW TERRITORIES	
SCALE	
DRAWN BY	DATE
MN	12.1.2026
REVISION BY	DATE
APPROVED BY	DATE
DWG. TITLE	
FSIs PROPOSAL	
DWG. NO.	VER.
APPENDIX I	001

參考編號 REFERENCE No. A/YL-LFS/603	繪圖 DRAWING A-4
---------------------------------------	-------------------

(摘錄自申請人於24. 2. 2026呈交的申請書)  
 (Extract from Applicant's  
 Submission of 24.2.2026)



**S/YL-LFS/11**

**申請地點 APPLICATION SITE**  
 先前申請 PREVIOUS APPLICATIONS  
 305 (26.1.18)  
 379 (8.1.21)  
 464 (19.5.23) X  
 483 (22.9.23) X

**S/YL-HTF/12**

**S/HSK/3**

**S/TSW/18**

**圖例 LEGEND**

584 (23.1.26) 獲批准的申請 APPROVED APPLICATION

485 (13.10.23) X 已撤銷 REVOKED

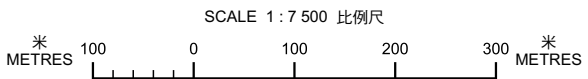
— 會議日期 DATE OF MEETING

- - - 申請編號 APPLICATION NUMBER

申請地點界線只作識別用 APPLICATION SITE BOUNDARY FOR IDENTIFICATION PURPOSE ONLY

**位置圖 LOCATION PLAN**

臨時公眾停車場(貨櫃車除外)連附屬設施(為期5年)  
 元朗流浮山丈量約份第129約多個地段和毗連政府土地  
 TEMPORARY PUBLIC VEHICLE PARK (EXCLUDING CONTAINER VEHICLES)  
 WITH ANCILLARY FACILITIES FOR A PERIOD OF 5 YEARS  
 VARIOUS LOTS IN D.D. 129 AND ADJOINING GOVERNMENT LAND,  
 LAU FAU SHAN, YUEN LONG

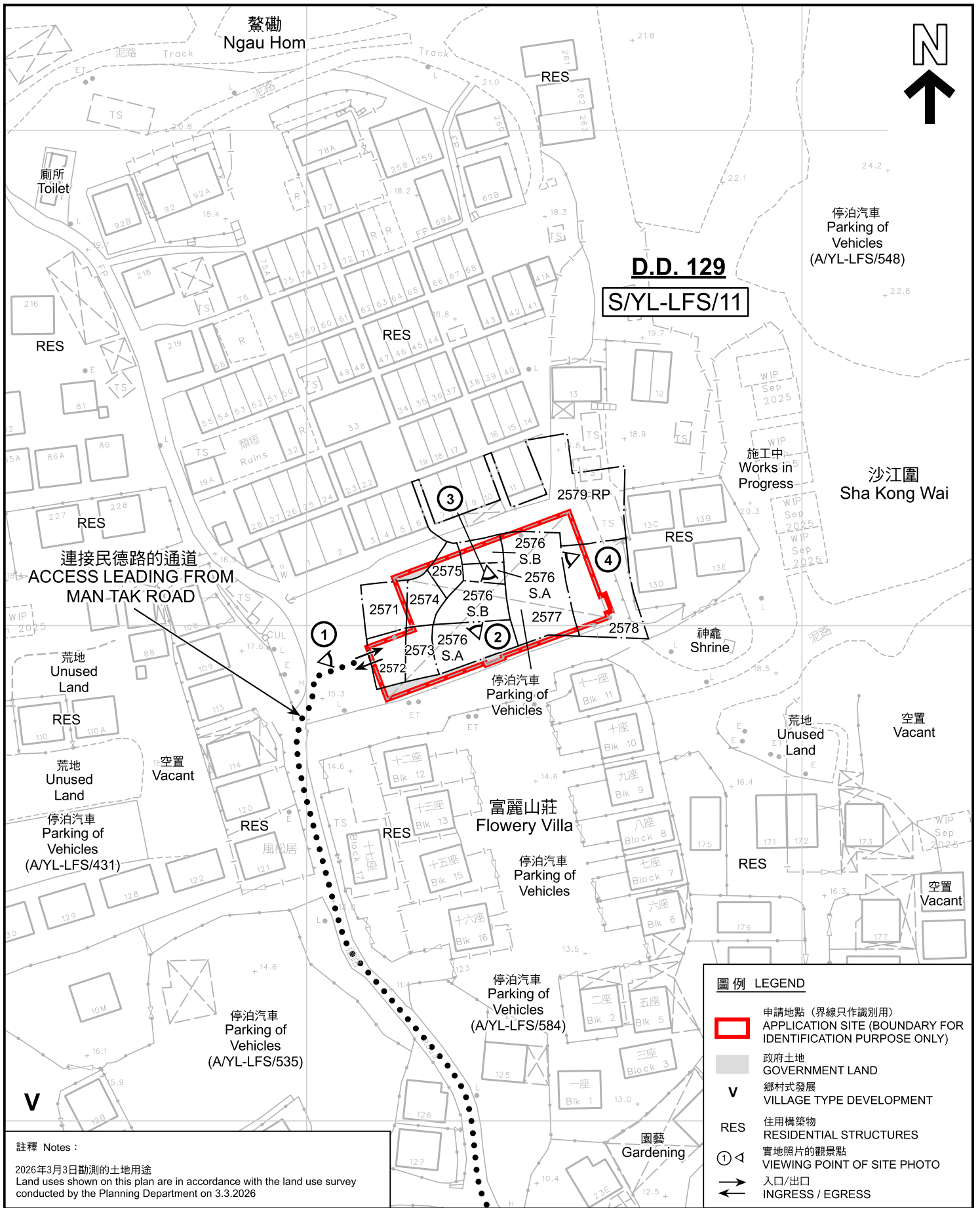


 **規畫署**  
 Planning Department

參考編號 REFERENCE No.  
**A/YL-LFS/603**

圖 PLAN  
**A-1**

本摘要圖於2026年3月20日擬備，所根據的資料為於2022年4月12日核准的分區計劃大綱圖編號 S/YL-LFS/11 EXTRACT PLAN PREPARED ON 20.3.2026 BASED ON OUTLINE ZONING PLAN No. S/YL-LFS/11 APPROVED ON 12.4.2022



圖例 LEGEND	
	申請地點 (界線只作識別用) APPLICATION SITE (BOUNDARY FOR IDENTIFICATION PURPOSE ONLY)
	政府土地 GOVERNMENT LAND
	鄉村式發展 VILLAGE TYPE DEVELOPMENT
RES	住用構築物 RESIDENTIAL STRUCTURES
	實地照片的觀景點 VIEWING POINT OF SITE PHOTO
	入口/出口 INGRESS / EGRESS

註釋 Notes :  
2026年3月3日勘測的土地用途  
Land uses shown on this plan are in accordance with the land use survey conducted by the Planning Department on 3.3.2026

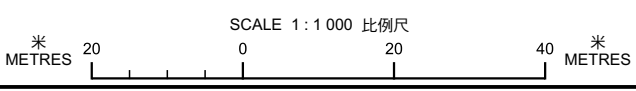
本摘要圖於2026年3月17日擬備，所根據的資料為測量圖編號 2-SW-22C 和 6-NW-2A  
EXTRACT PLAN PREPARED ON 17.3.2026 BASED ON SURVEY SHEETS No. 2-SW-22C and 6-NW-2A

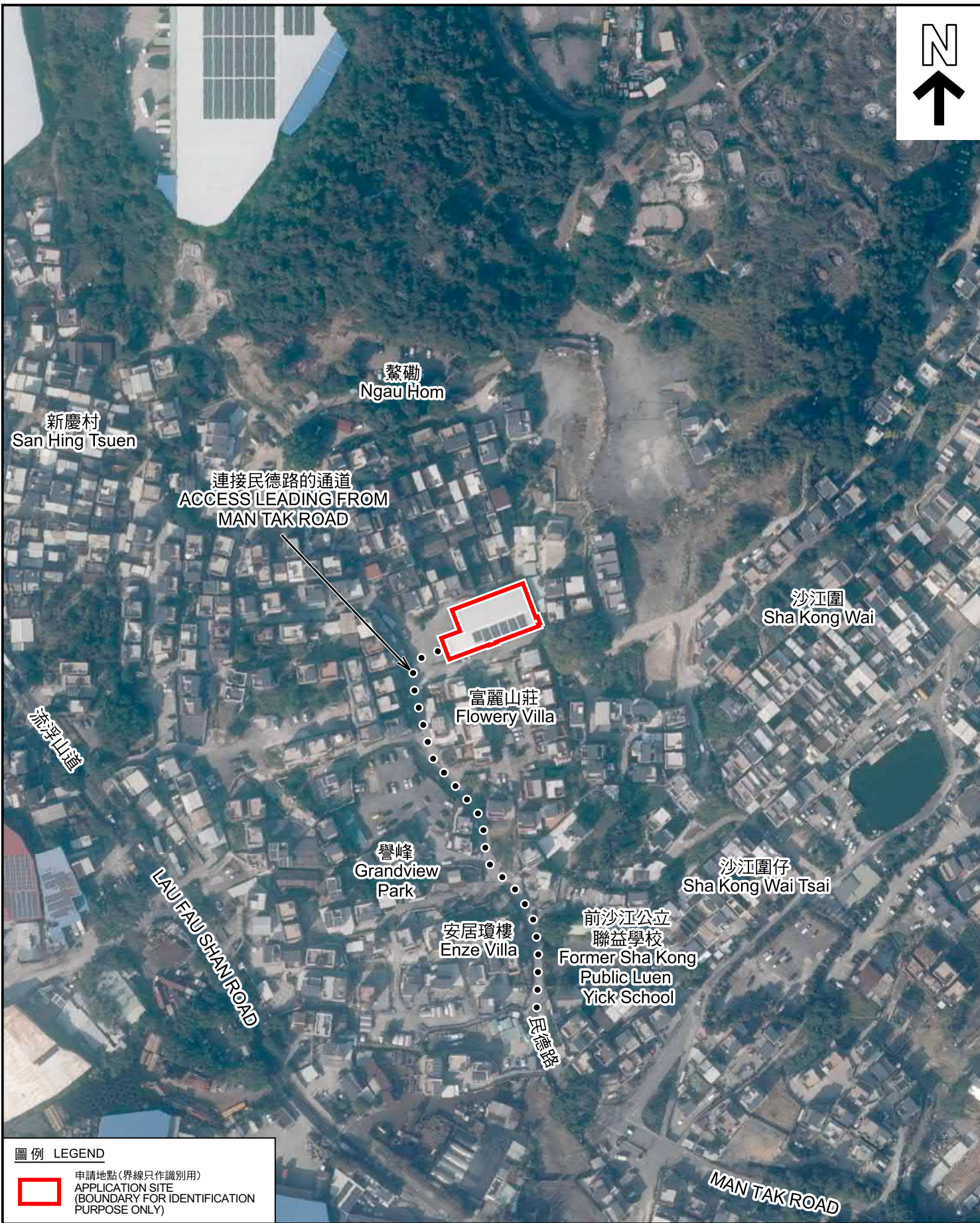
**平面圖 SITE PLAN**

臨時公眾停車場(貨櫃車除外)連附屬設施(為期5年)  
元朗流浮山丈量約份第129約多個地段和毗連政府土地  
TEMPORARY PUBLIC VEHICLE PARK (EXCLUDING CONTAINER VEHICLES)  
WITH ANCILLARY FACILITIES FOR A PERIOD OF 5 YEARS  
VARIOUS LOTS IN D.D. 129 AND ADJOINING GOVERNMENT LAND,  
LAU FAU SHAN, YUEN LONG

**規劃署**  
Planning Department

參考編號 REFERENCE No. <b>A/YL-LFS/603</b>	圖 PLAN <b>A-2</b>
--	----------------------





圖例 LEGEND



申請地點 (界線只作識別用)  
APPLICATION SITE  
(BOUNDARY FOR IDENTIFICATION  
PURPOSE ONLY)

本摘要圖於2026年3月18日擬備，所根據的資料為地政總署於2025年1月3日拍得的航攝照片編號 E246551C  
EXTRACT PLAN PREPARED ON 18.3.2026  
BASED ON AERIAL PHOTO No.  
E246551C TAKEN ON 3.1.2025  
BY LANDS DEPARTMENT

航攝照片 AERIAL PHOTO

臨時公眾停車場 (貨櫃車除外) 連附屬設施 (為期5年)  
元朗流浮山丈量約份第129約多個地段和毗連政府土地  
TEMPORARY PUBLIC VEHICLE PARK (EXCLUDING CONTAINER VEHICLES)  
WITH ANCILLARY FACILITIES FOR A PERIOD OF 5 YEARS  
VARIOUS LOTS IN D.D. 129 AND ADJOINING GOVERNMENT LAND,  
LAU FAU SHAN, YUEN LONG

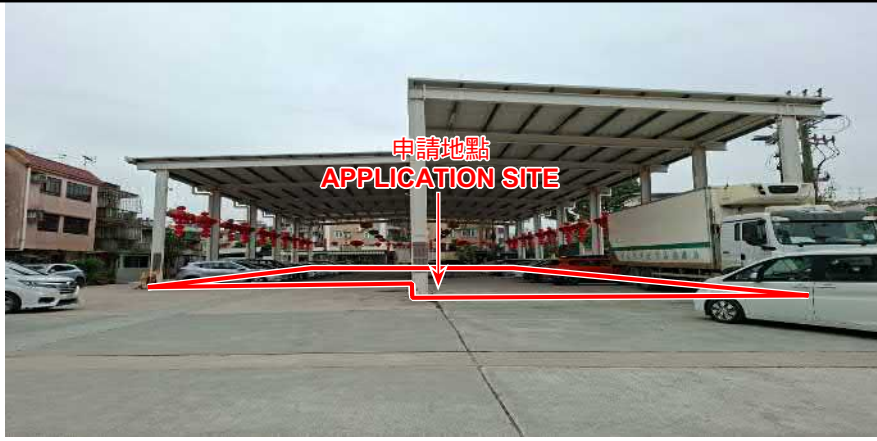


規劃署  
Planning Department

參考編號  
REFERENCE No.  
A/YL-LFS/603

圖 PLAN  
A-3

1



2



3



4



申請地點界線只作識別用 APPLICATION SITE BOUNDARY FOR IDENTIFICATION PURPOSE ONLY

### 實地照片 SITE PHOTOS

臨時公眾停車場(貨櫃車除外)連附屬設施(為期5年)  
 元朗流浮山丈量約份第129約多個地段和毗連政府土地  
 TEMPORARY PUBLIC VEHICLE PARK (EXCLUDING CONTAINER VEHICLES)  
 WITH ANCILLARY FACILITIES FOR A PERIOD OF 5 YEARS  
 VARIOUS LOTS IN D.D. 129 AND ADJOINING GOVERNMENT LAND,  
 LAU FAU SHAN, YUEN LONG



規劃署  
 Planning Department

參考編號  
 REFERENCE No.  
 A/YL-LFS/603

圖 PLAN  
 A-4

本圖於2026年3月17日擬備，所根據的資料為攝於2026年3月3日的實地照片  
 PLAN PREPARED ON 17.3.2026  
 BASED ON SITE PHOTOS  
 TAKEN ON 3.3.2026