

(摘錄自申請人於 3. 3. 2026 呈交的申請書)  
 (Extract from Applicant's Submission of 3.3.2026)

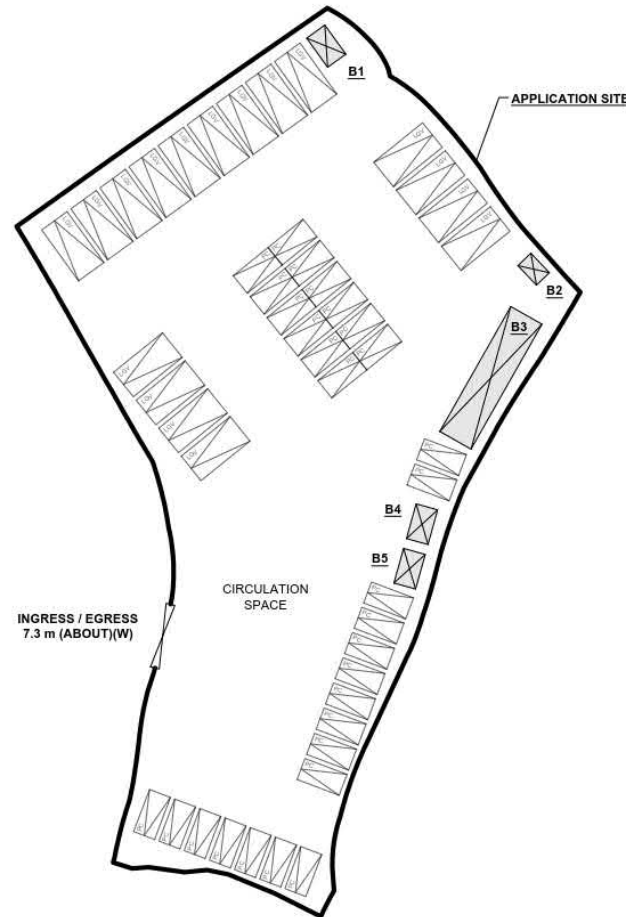
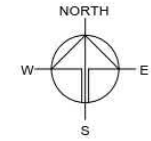
參考編號 REFERENCE No. A/YL-TYST/1349	繪圖 DRAWING A-1
---	-------------------



**DEVELOPMENT PARAMETERS**

APPLICATION SITE AREA	: 3,319 m <sup>2</sup>	(ABOUT)
COVERED AREA	: 100 m <sup>2</sup>	(ABOUT)
UNCOVERED AREA	: 3,219 m <sup>2</sup>	(ABOUT)
PLOT RATIO	: 0.03	(ABOUT)
SITE COVERAGE	: 3 %	(ABOUT)
NO. OF STRUCTURE	: 5	
DOMESTIC GFA	: NOT APPLICABLE	
NON-DOMESTIC GFA	: 100 m <sup>2</sup>	(ABOUT)
TOTAL GFA	: 100 m <sup>2</sup>	(ABOUT)
BUILDING HEIGHT	: 3 m	(ABOUT)
NO. OF STOREY	: 1	

STRUCTURE	USE	COVERED AREA	GROSS FLOOR AREA	BUILDING HEIGHT
B1	PORTABLE TOILET	10 m <sup>2</sup> (ABOUT)	10 m <sup>2</sup> (ABOUT)	3 m (ABOUT)(1-STOREY)
B2	METER ROOM	6 m <sup>2</sup> (ABOUT)	6 m <sup>2</sup> (ABOUT)	3 m (ABOUT)(1-STOREY)
B3	SITE OFFICE, GUARD ROOM AND STORAGE OF BOLLARD AND TRAFFIC CONES	64 m <sup>2</sup> (ABOUT)	64 m <sup>2</sup> (ABOUT)	3 m (ABOUT)(1-STOREY)
B4	PORTABLE TOILET	10 m <sup>2</sup> (ABOUT)	10 m <sup>2</sup> (ABOUT)	3 m (ABOUT)(1-STOREY)
B5	PORTABLE TOILET	10 m <sup>2</sup> (ABOUT)	10 m <sup>2</sup> (ABOUT)	3 m (ABOUT)(1-STOREY)
<b>TOTAL</b>		<b>100 m<sup>2</sup> (ABOUT)</b>	<b>100 m<sup>2</sup> (ABOUT)</b>	



**PARKING AND LOADING / UNLOADING PROVISIONS**

NO. OF PRIVATE CAR PARKING SPACE	: 29
DIMENSION OF PARKING SPACE	: 5 m (L) x 2.5 m (W)
NO. OF LIGHT GOODS VEHICLE PARKING SPACE	: 17
DIMENSION OF PARKING SPACE	: 7 m (L) x 3.5 m (W)

\*SITE BOUNDARY FOR IDENTIFICATION PURPOSE ONLY

**LEGEND**

- APPLICATION SITE
- STRUCTURE
- INGRESS / EGRESS
- PARKING SPACE (PRIVATE CAR)
- PARKING SPACE (LIGHT GOODS VEHICLE)

PLANNING CONSULTANT



PROJECT

PROPOSED TEMPORARY PUBLIC VEHICLE PARK (EXCLUDING CONTAINER VEHICLE) WITH ANCILLARY FACILITIES FOR A PERIOD OF 5 YEARS

SITE LOCATION

VARIOUS LOTS IN D.D. 121, TAI TAO TSUEN, YUEN LONG, NEW TERRITORIES

SCALE

1:750 @ A4

DRAWN BY	DATE
MN	20.1.2026
REVISED BY	DATE
APPROVED BY	DATE

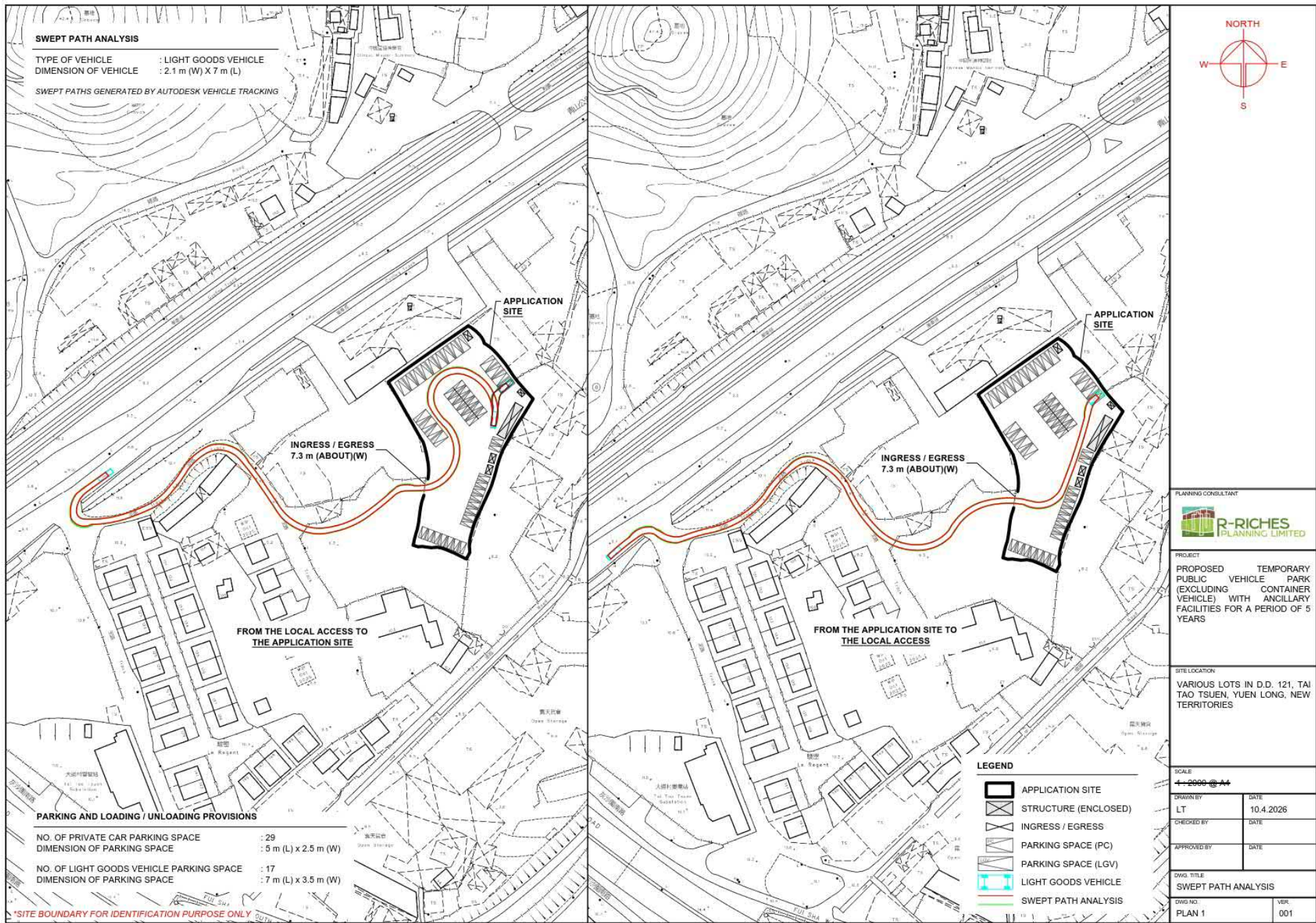
DWG. TITLE  
LAYOUT PLAN

DWG. NO.	VER.
PLAN 4	001

(摘錄自申請人於 3. 3. 2026 提交的申請書)  
**(Extract from Applicant's Submission of 3.3.2026)**

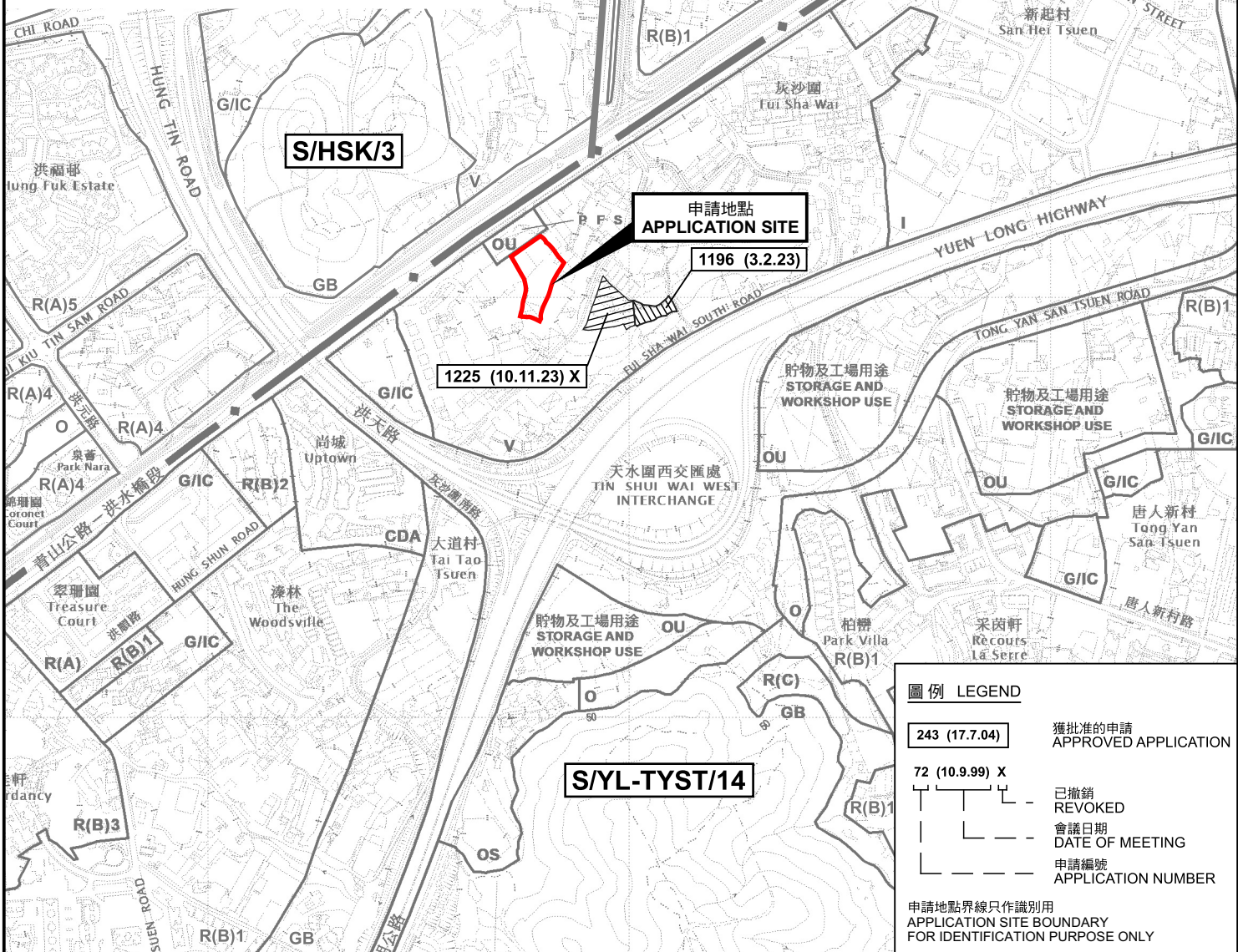
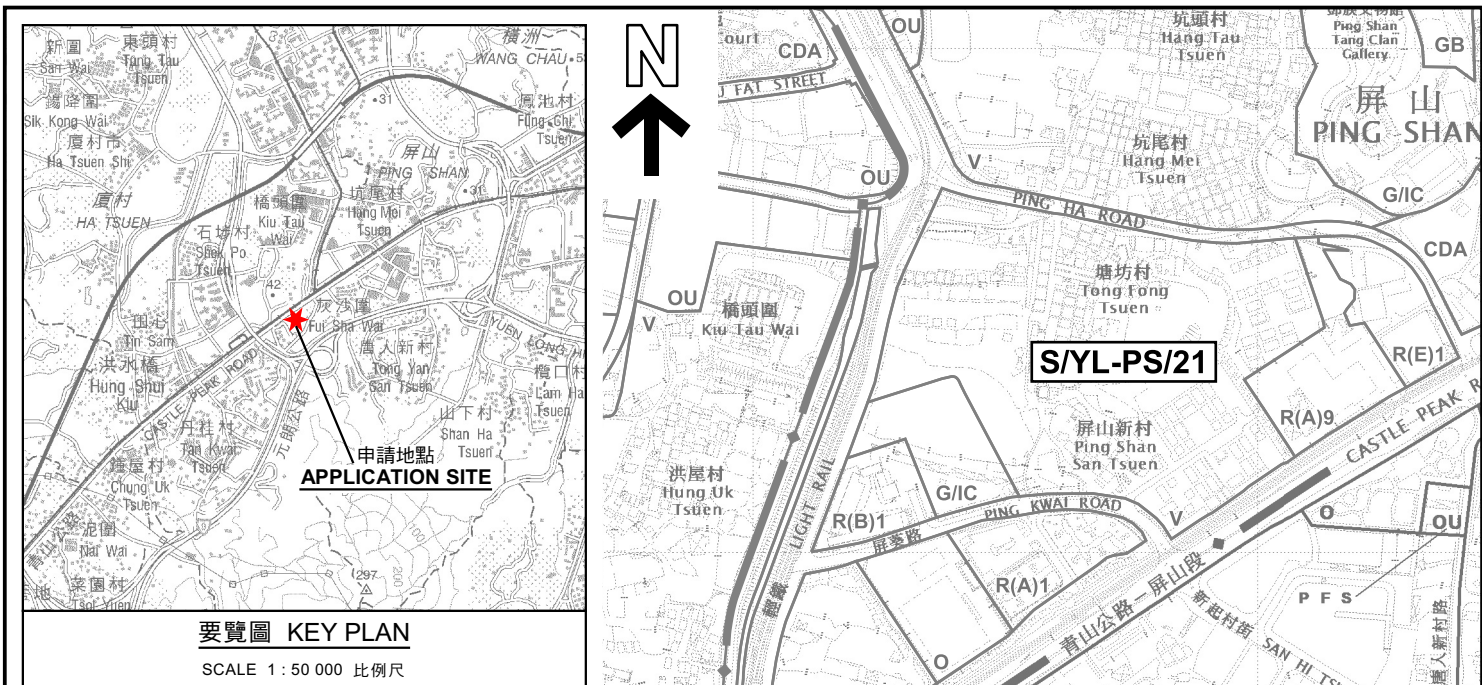
參考編號  
REFERENCE No.  
A/YL-TYST/1349

繪圖 DRAWING  
A-3



(摘錄自申請人於 10.4.2026 呈交的進一步資料)  
 (Extract from Applicant's Further Information Submitted on 10.4.2026)

參考編號 REFERENCE No. A/YL-TYST/1349	繪圖 DRAWING A-4
---	-------------------



本摘要圖於2026年3月23日擬備，所根據的資料為於2021年8月10日核准的分區計劃大綱圖編號 S/YL-TYST/14 EXTRACT PLAN PREPARED ON 23.3.2026 BASED ON OUTLINE ZONING PLAN No. S/YL-TYST/14 APPROVED ON 10.8.2021

**位置圖及同類申請 LOCATION PLAN WITH SIMILAR APPLICATIONS**

擬議臨時公眾停車場(貨櫃車除外)連附屬設施(為期5年)  
元朗大道村丈量約份第121約多個地段  
PROPOSED TEMPORARY PUBLIC VEHICLE PARK (EXCLUDING CONTAINER VEHICLES) WITH ANCILLARY FACILITIES FOR A PERIOD OF 5 YEARS  
VARIOUS LOTS IN D.D.121, TAI TAO TSUEN, YUEN LONG

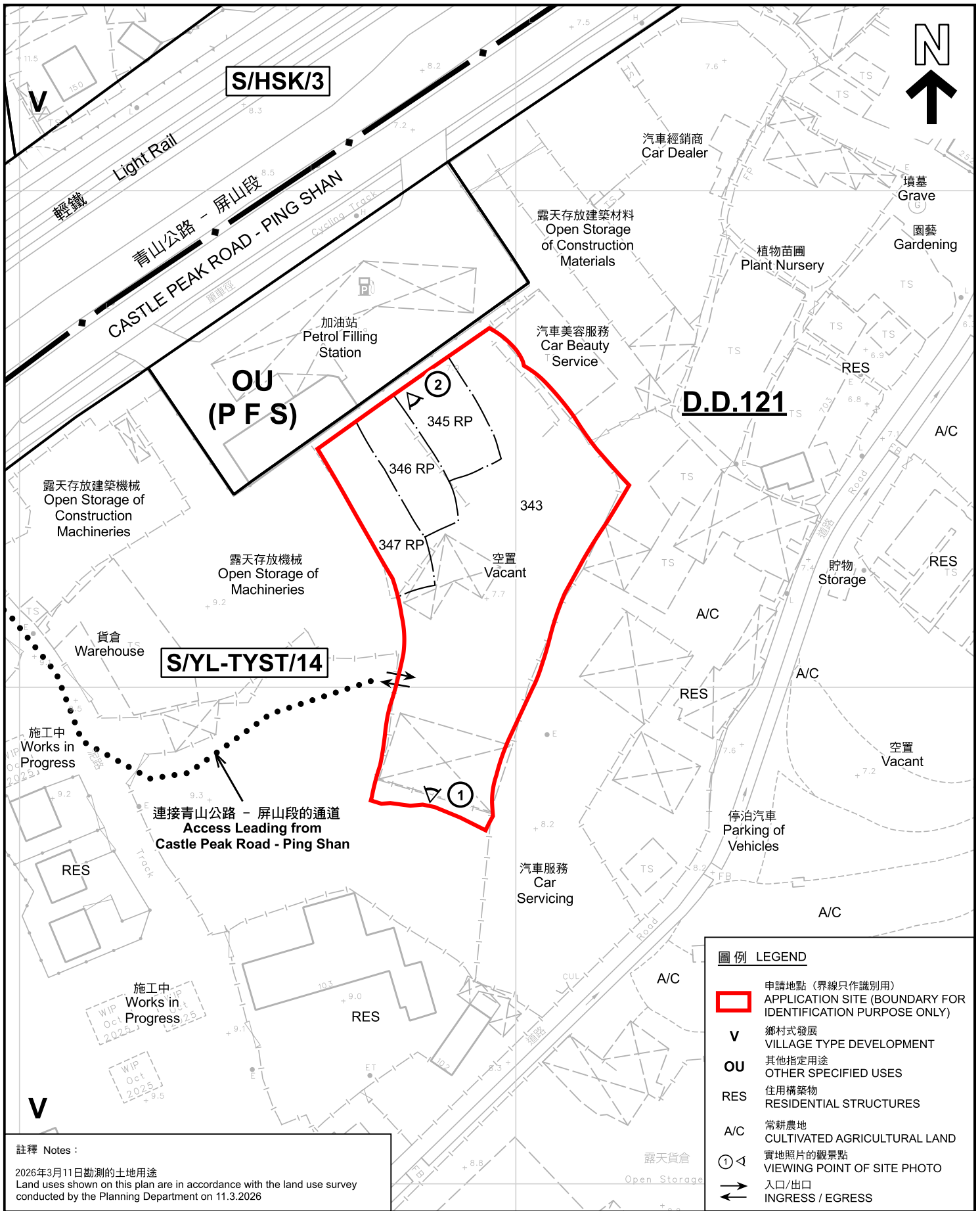
SCALE 1 : 7 500 比例尺

米 100 0 100 200 300 米  
METRES

**規劃署**  
Planning Department

參考編號 REFERENCE No.  
**A/YL-TYST/1349**

圖 PLAN  
**A-1**



圖例 LEGEND	
	申請地點 (界線只作識別用) APPLICATION SITE (BOUNDARY FOR IDENTIFICATION PURPOSE ONLY)
<b>V</b>	鄉村式發展 VILLAGE TYPE DEVELOPMENT
<b>OU</b>	其他指定用途 OTHER SPECIFIED USES
<b>RES</b>	住用構築物 RESIDENTIAL STRUCTURES
<b>A/C</b>	常耕農地 CULTIVATED AGRICULTURAL LAND
	實地照片的觀景點 VIEWING POINT OF SITE PHOTO
	入口/出口 INGRESS / EGRESS

註釋 Notes :  
2026年3月11日勘測的土地用途  
Land uses shown on this plan are in accordance with the land use survey conducted by the Planning Department on 11.3.2026

本摘要圖於2026年3月23日擬備，所根據的資料為測量圖編號 6-NW-13A及C  
EXTRACT PLAN PREPARED ON 23.3.2026 BASED ON SURVEY SHEETS No. 6-NW-13A&C

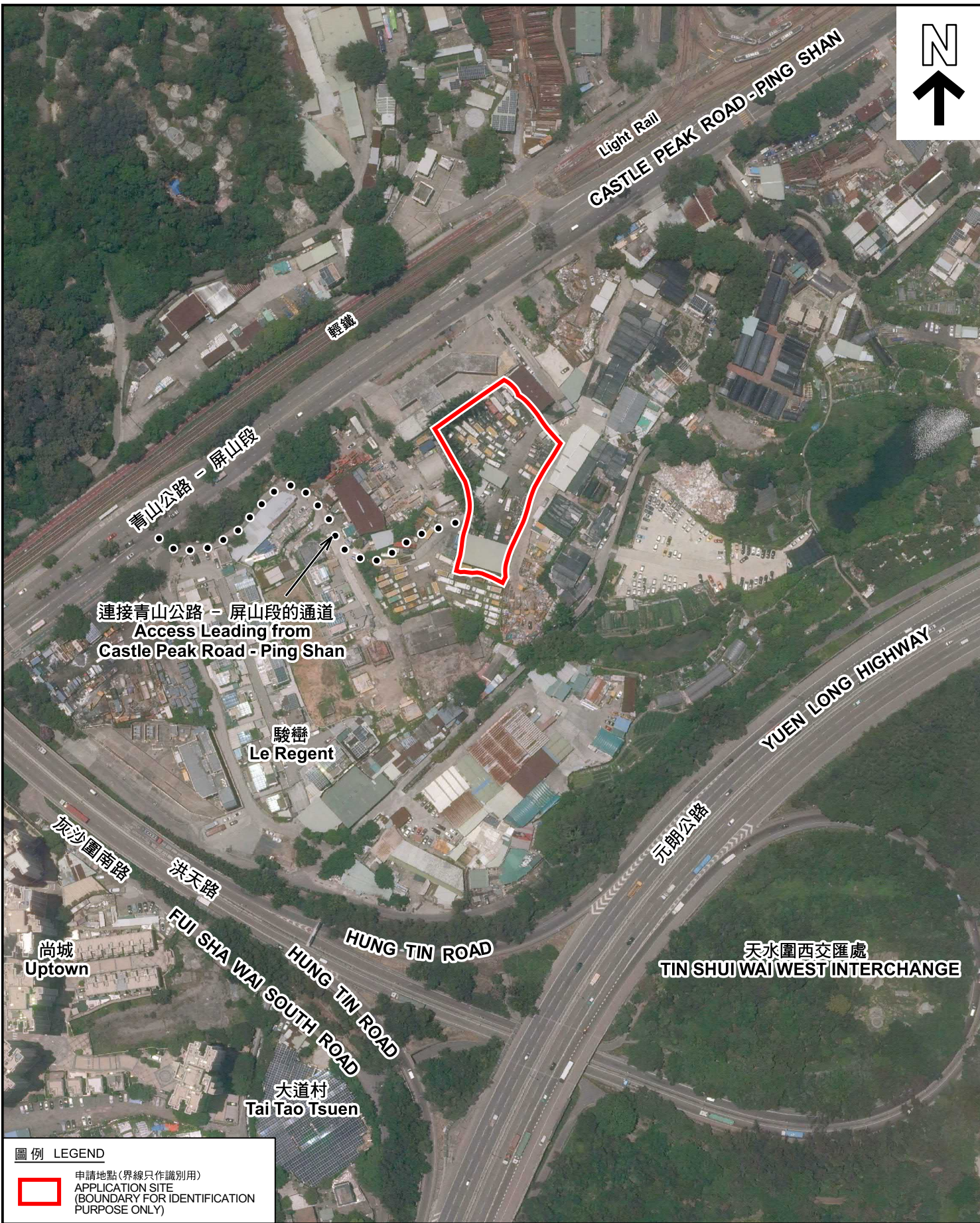
**平面圖 SITE PLAN**

擬議臨時公眾停車場(貨櫃車除外)連附屬設施(為期5年)  
元朗大道村丈量約份第121約多個地段  
PROPOSED TEMPORARY PUBLIC VEHICLE PARK  
(EXCLUDING CONTAINER VEHICLES) WITH ANCILLARY FACILITIES  
FOR A PERIOD OF 5 YEARS  
VARIOUS LOTS IN D.D.121, TAI TAO TSUEN, YUEN LONG

SCALE 1:1 000 比例尺

**規劃署**  
Planning Department

參考編號 REFERENCE No. <b>A/YL-TYST/1349</b>	圖 PLAN <b>A-2</b>
--	----------------------



連接青山公路 - 屏山段的通道  
Access Leading from  
Castle Peak Road - Ping Shan

駿巒  
Le Regent

尚城  
Uptown

大道村  
Tai Tao Tsuen

天水圍西交匯處  
TIN SHUIWAI WEST INTERCHANGE

圖例 LEGEND



申請地點 (界線只作識別用)  
APPLICATION SITE  
(BOUNDARY FOR IDENTIFICATION  
PURPOSE ONLY)

本摘要圖於2026年3月23日擬備，所根據的資料為地政總署於2025年6月9日拍得的航攝照片編號 E257667C  
EXTRACT PLAN PREPARED ON 23.3.2026  
BASED ON AERIAL PHOTO No. E257667C TAKEN ON 9.6.2025 BY LANDS DEPARTMENT

航攝照片 AERIAL PHOTO

擬議臨時公眾停車場 (貨櫃車除外) 連附屬設施 (為期5年)  
元朗大道村丈量約份第121約多個地段  
PROPOSED TEMPORARY PUBLIC VEHICLE PARK  
(EXCLUDING CONTAINER VEHICLES) WITH ANCILLARY FACILITIES  
FOR A PERIOD OF 5 YEARS  
VARIOUS LOTS IN D.D.121, TAI TAO TSUEN, YUEN LONG



規劃署  
Planning Department

參考編號  
REFERENCE No.  
AYL-TYST/1349

圖 PLAN  
A-3



**實地照片 SITE PHOTOS**

擬議臨時公眾停車場(貨櫃車除外)連附屬設施(為期5年)  
元朗大道村丈量約份第121約多個地段  
PROPOSED TEMPORARY PUBLIC VEHICLE PARK  
(EXCLUDING CONTAINER VEHICLES) WITH ANCILLARY FACILITIES  
FOR A PERIOD OF 5 YEARS  
VARIOUS LOTS IN D.D.121, TAI TAO TSUEN, YUEN LONG



規劃署  
Planning Department

參考編號  
REFERENCE No.  
AYL-TYST/1349

圖 PLAN  
A-4

本圖於2026年3月20日擬備，所根據的資料為攝於2026年3月11日的實地照片  
PLAN PREPARED ON 20.3.2026  
BASED ON SITE PHOTOS  
TAKEN ON 11.3.2026