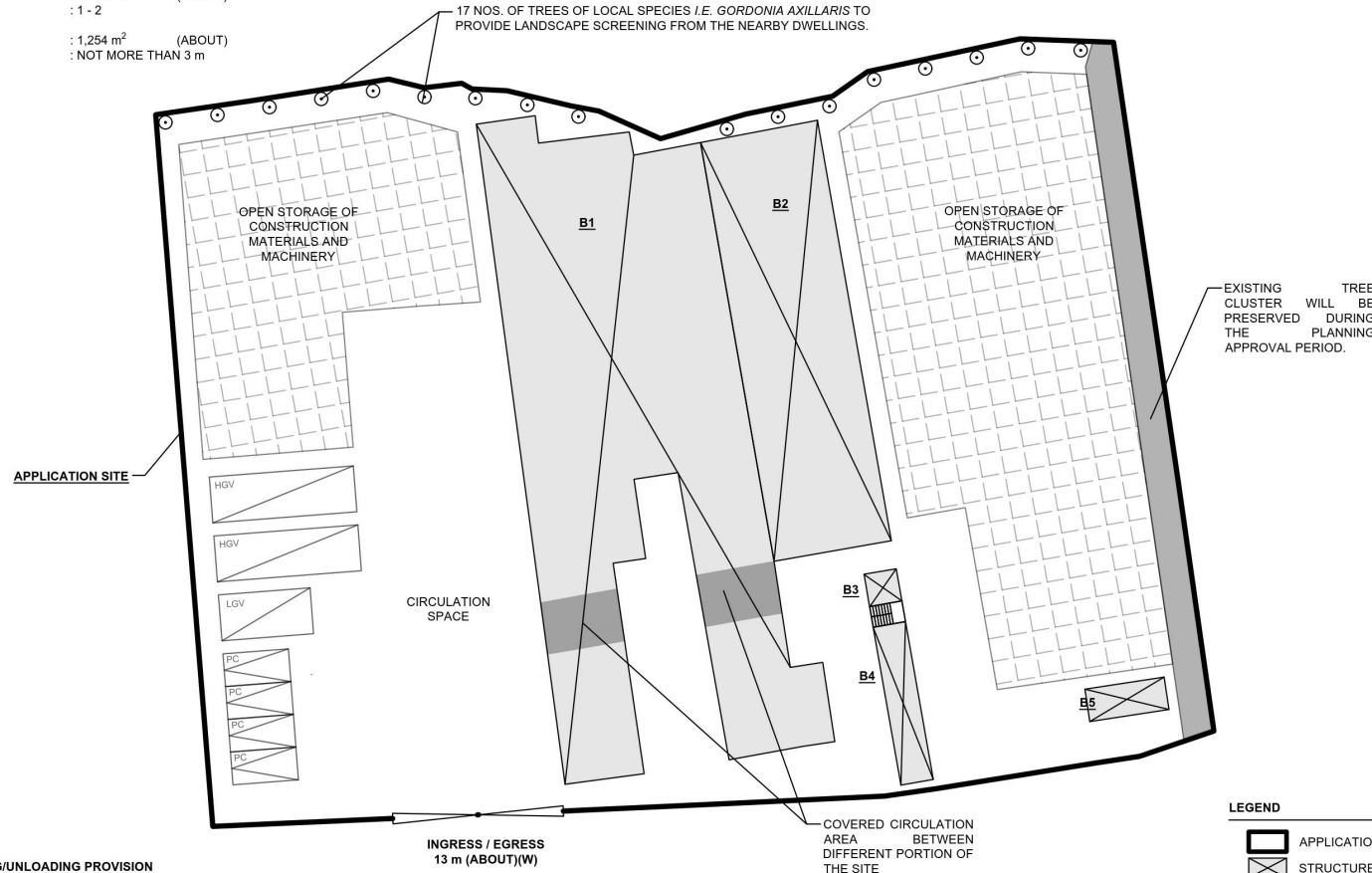
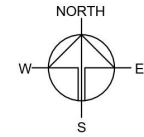


DEVELOPMENT PARAMETERS

APPLICATION SITE AREA	: 4,069 m ²	(ABOUT)
COVERED AREA	: 1,095 m ²	(ABOUT)
UNCOVERED AREA	: 2,974 m ²	(ABOUT)
PLOT RATIO	: 0.28	(ABOUT)
SITE COVERAGE	: 27 %	(ABOUT)
NO. OF STRUCTURE	: 5	
DOMESTIC GFA	: NOT APPLICABLE	
NON-DOMESTIC GFA	: 1,140 m ²	(ABOUT)
TOTAL GFA	: 1,140 m ²	(ABOUT)
BUILDING HEIGHT	: 3 m - 8 m	(ABOUT)
NO. OF STOREY	: 1 - 2	
OPEN STORAGE AREA	: 1,254 m ²	(ABOUT)
STACKING HEIGHT	: NOT MORE THAN 3 m	

STRUCTURE	USE	COVERED AREA	GROSS FLOOR AREA	BUILDING HEIGHT
B1	WAREHOUSE (EXCLUDING D.G.G.)*	746 m ² (ABOUT)	746 m ² (ABOUT)	4.5 m (ABOUT)(1-STOREY)
B2	WAREHOUSE (EXCLUDING D.G.G.)*	294 m ² (ABOUT)	294 m ² (ABOUT)	8 m (ABOUT)(1-STOREY)
B3	STORAGE ROOM FOR TOOLS	6 m ² (ABOUT)	6 m ² (ABOUT)	3 m (ABOUT)(1-STOREY)
B4	SITE OFFICE AND WASHROOM	34 m ² (ABOUT) ¹	64 m ² (ABOUT) ²	7 m (ABOUT)(2-STOREY)
B5	SITE OFFICE AND WASHROOM	15 m ² (ABOUT)	30 m ² (ABOUT)	7 m (ABOUT)(2-STOREY)
TOTAL		1,095 m² (ABOUT)	1,140 m² (ABOUT)	

* D.G.G. - DANGEROUS GOODS GODOWN
¹ COVERED AREA OF B4 - 30 m² (G/F) + 4 m² (STAIRCASE) = 34 m²
² GROSS FLOOR AREA OF B4 - 30 m² (G/F) + 30 m² (G/F) + 4 m² (STAIRCASE) = 64 m²



PARKING AND LOADING/UNLOADING PROVISION

NO. OF PRIVATE CAR PARKING SPACE	: 4
DIMENSION OF PARKING SPACE	: 5 m (L) X 2.5 m (W)
NO. L/U/L SPACE FOR LIGHT GOODS VEHICLE	: 1
DIMENSION OF LOADING/UNLOADING SPACE	: 7 m (L) X 3.5 m (W)
NO. L/U/L SPACE FOR HEAVY GOODS VEHICLE	: 2
DIMENSION OF LOADING/UNLOADING SPACE	: 11 m (L) X 3.5 m (W)

SITE BOUNDARY FOR IDENTIFICATION PURPOSE ONLY.

LEGEND

- APPLICATION SITE
- STRUCTURE
- OPEN STORAGE AREA
- PROPOSED TREE
- PARKING SPACE (PC)
- L/U/L SPACE (LGV)
- L/U/L SPACE (HGV)
- INGRESS / EGRESS

PLANNING CONSULTANT



PROJECT

PROPOSED WAREHOUSE (EXCLUDING DANGEROUS GOODS GODOWN) AND OPEN STORAGE OF CONSTRUCTION MATERIALS AND MACHINERY FOR A PERIOD OF 3 YEARS

SITE LOCATION

LOT 1905 RP (PART) IN D.D. 107 AND ADJOINING GOVERNMENT LAND, KAM TIN, YUEN LONG, NEW TERRITORIES

SCALE

1:500 @ 1/4"

DRAWN BY

MN

DATE

23.4.2026

REVISED BY

DATE

APPROVED BY

DATE

DWG. TITLE

LAYOUT PLAN

DWG NO.

F13 P01

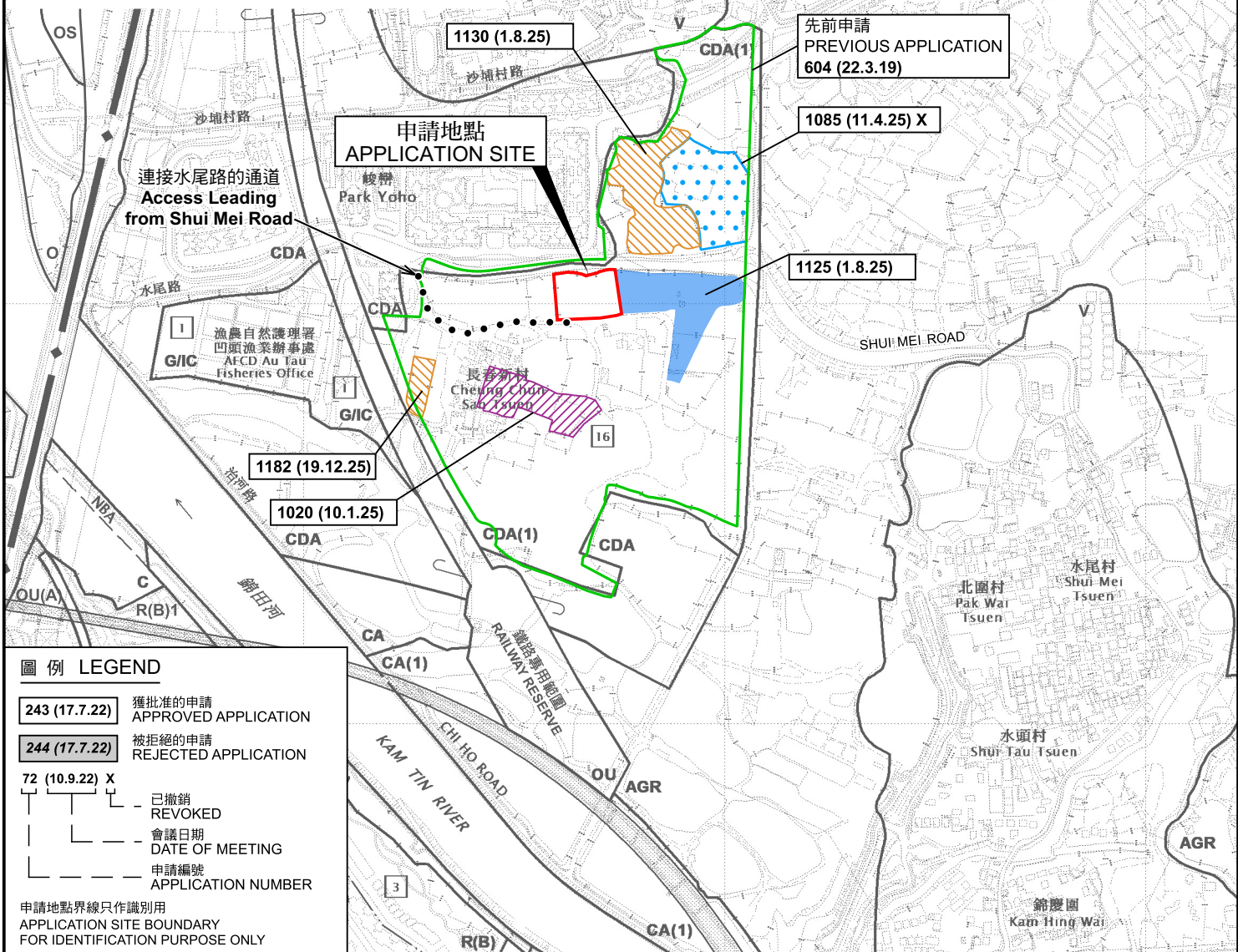
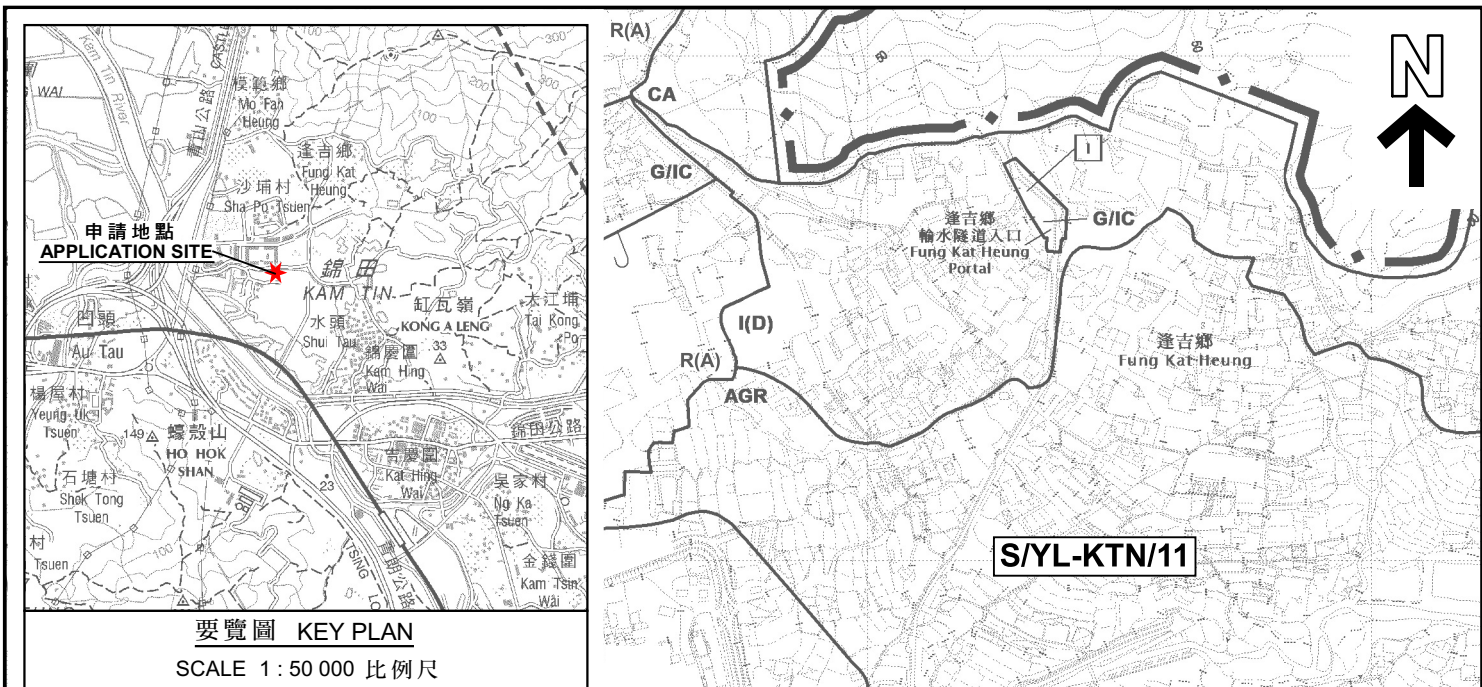
VER.

002

(摘錄自申請人於 23. 4. 2026 提交的進一步資料)
 (Extract from Applicant's Further Information Submitted on 23.4.2026)

參考編號
 REFERENCE No.
 A/YL-KTN/1214

繪圖
 DRAWING
 A - 1



圖例 LEGEND

243 (17.7.22)	獲批准的申請 APPROVED APPLICATION
244 (17.7.22)	被拒絕的申請 REJECTED APPLICATION
72 (10.9.22) X	已撤銷 REVOKED
—	會議日期 DATE OF MEETING
—	申請編號 APPLICATION NUMBER

申請地點界線只作識別用
APPLICATION SITE BOUNDARY FOR IDENTIFICATION PURPOSE ONLY

本摘要圖於2026年4月27日擬備，所根據的資料為於2023年12月5日核准的分區計劃大綱圖編號 S/YL-KTN/11 EXTRACT PLAN PREPARED ON 27.4.2026 BASED ON OUTLINE ZONING PLAN No. S/YL-KTN/11 APPROVED ON 5.12.2023

位置圖 LOCATION PLAN

臨時露天存放建築材料和機械及貨倉 (危險品倉庫除外) (為期3年)
元朗錦田北丈量約份第107約地段第1905號餘段 (部分) 及毗連政府土地
TEMPORARY OPEN STORAGE OF CONSTRUCTION MATERIALS AND MACHINERIES AND WAREHOUSE (EXCLUDING DANGEROUS GOODS GODOWN) FOR A PERIOD OF 3 YEARS LOT 1905 RP (PART) IN D.D. 107 AND ADJOINING GOVERNMENT LAND, KAM TIN NORTH, YUEN LONG

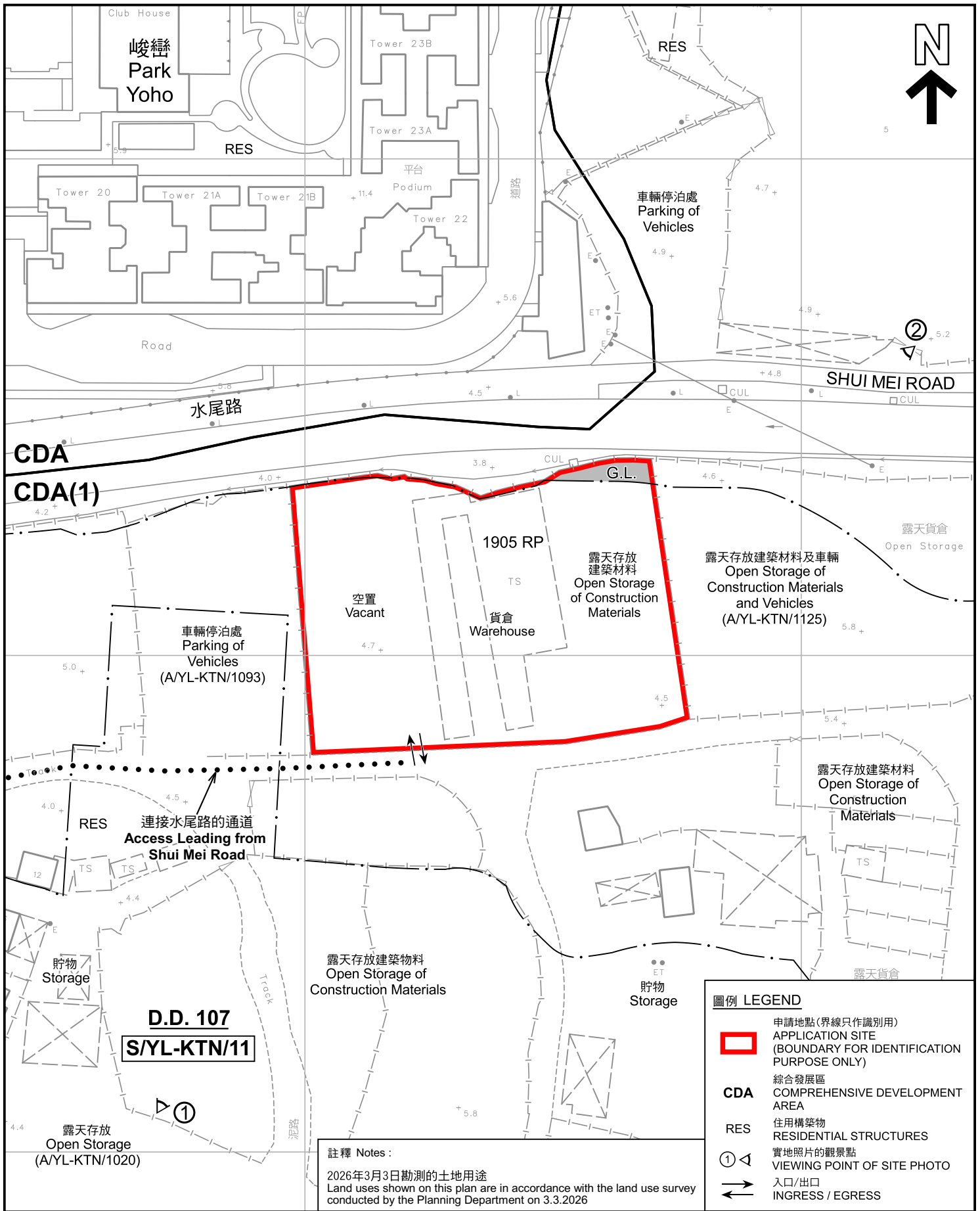
SCALE 1 : 7 500 比例尺

米 METRES 100 0 100 200 300 米 METRES

規劃署 Planning Department

參考編號 REFERENCE No. A/YL-KTN/1214

圖 PLAN A-1



本摘要圖於2026年4月27日擬備，所根據的資料為測量圖編號 6-NE-6B
 EXTRACT PLAN PREPARED ON 27.4.2026 BASED ON SURVEY SHEET No. 6-NE-6B

平面圖 SITE PLAN

臨時露天存放建築材料和機械及貨倉（危險品倉庫除外）（為期3年）
 元朗錦田北丈量約份第107約地段第1905號餘段（部分）及毗連政府土地
 TEMPORARY OPEN STORAGE OF CONSTRUCTION MATERIALS AND MACHINERIES AND WAREHOUSE
 (EXCLUDING DANGEROUS GOODS GODOWN) FOR A PERIOD OF 3 YEARS
 LOT 1905 RP (PART) IN D.D. 107 AND ADJOINING GOVERNMENT LAND,
 KAM TIN NORTH, YUEN LONG

註釋 Notes :
 2026年3月3日勘測的土地用途
 Land uses shown on this plan are in accordance with the land use survey conducted by the Planning Department on 3.3.2026

SCALE 1 : 1 000 比例尺
 0 20 40
 米 METRES



規劃署
Planning Department

參考編號
REFERENCE No.
A/YL-KTN/1214

圖 PLAN
A-2



圖例 LEGEND

- 申請地點 (界線只作識別用)
APPLICATION SITE (BOUNDARY FOR IDENTIFICATION PURPOSE ONLY)
- 入口/出口
INGRESS / EGRESS

本摘要圖於2026年4月27日擬備，所根據的資料為地政總署於2025年5月26日拍得的航攝照片編號 E257298C EXTRACT PLAN PREPARED ON 27.4.2026 BASED ON AERIAL PHOTO No. E257298C TAKEN ON 26.5.2025 BY LANDS DEPARTMENT

航攝照片 AERIAL PHOTO

臨時露天存放建築材料和機械及貨倉 (危險品倉庫除外) (為期3年)
元朗錦田北丈量約份第107約地段第1905號餘段 (部分) 及毗連政府土地
TEMPORARY OPEN STORAGE OF CONSTRUCTION MATERIALS AND MACHINERIES AND WAREHOUSE (EXCLUDING DANGEROUS GOODS GODOWN) FOR A PERIOD OF 3 YEARS LOT 1905 RP (PART) IN D.D. 107 AND ADJOINING GOVERNMENT LAND, KAM TIN NORTH, YUEN LONG



規劃署
Planning Department

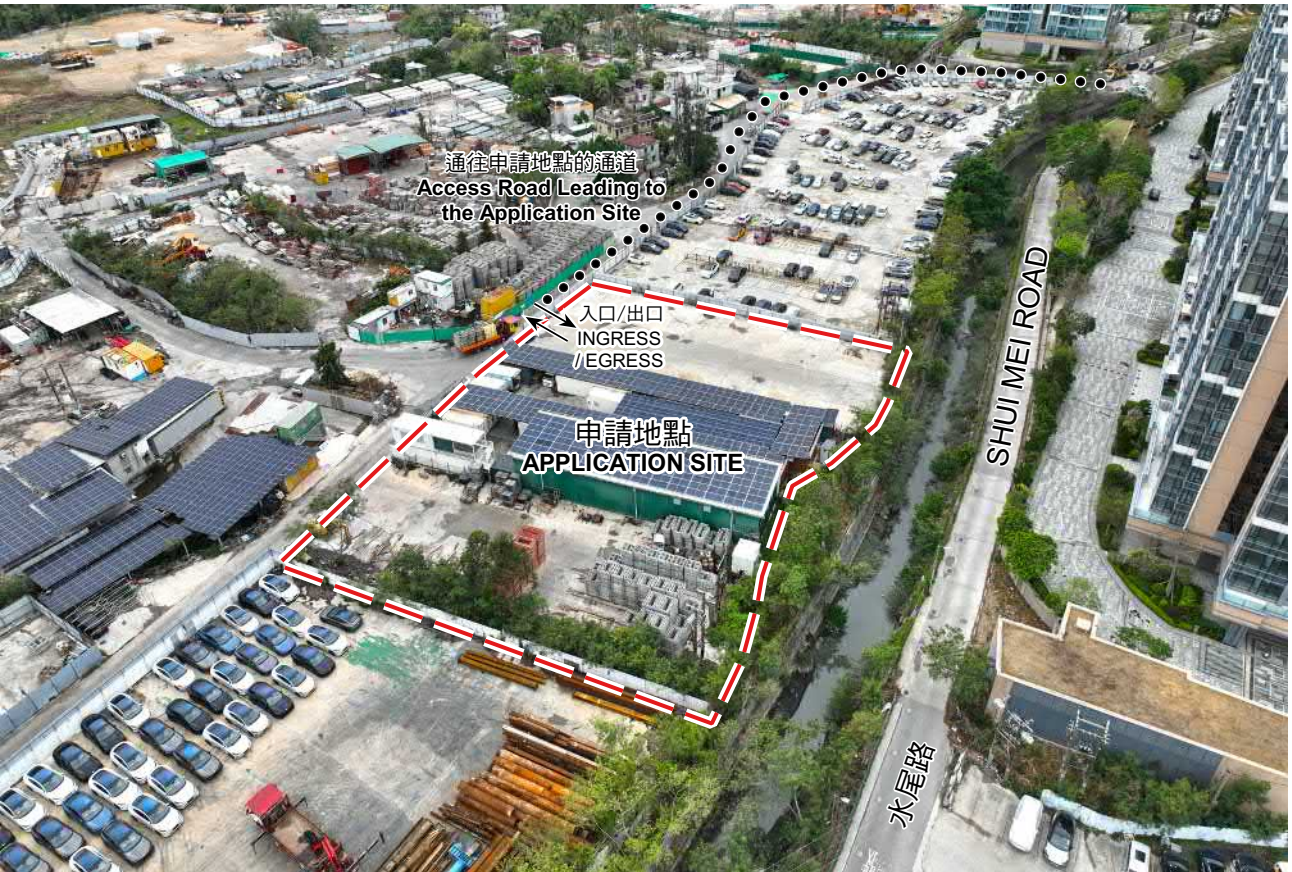
參考編號
REFERENCE No.
AYL-KTN/1214

圖 PLAN
A-3

1



2



申請地點界線只作識別用 APPLICATION SITE BOUNDARY FOR IDENTIFICATION PURPOSE ONLY

實地照片 SITE PHOTOS

本圖於2026年4月27日擬備，所根據的資料為攝於2026年3月3日的實地照片
PLAN PREPARED ON 27.4.2026
BASED ON SITE PHOTOS
TAKEN ON 3.3.2026

臨時露天存放建築材料和機械及貨倉(危險品倉庫除外)(為期3年)
元朗錦田北丈量約份第107約地段第1905號餘段(部分)及毗連政府土地
TEMPORARY OPEN STORAGE OF
CONSTRUCTION MATERIALS AND MACHINERIES AND WAREHOUSE
(EXCLUDING DANGEROUS GOODS GODOWN) FOR A PERIOD OF 3 YEARS
LOT 1905 RP (PART) IN D.D. 107 AND ADJOINING GOVERNMENT LAND,
KAM TIN NORTH, YUEN LONG



規劃署
Planning Department

參考編號
REFERENCE No.
AYL-KTN/1214

圖 PLAN
A-4