

DIAGRAMMATIC SECTION



參考編號 REFERENCE No. R/S/K10/31	繪圖 DRAWING H - 1
--	-------------------------------

Legend

- 1 A 6m voluntary above-ground full-height setback from Argyle Street to provide a breathing corridor and for streetscape enhancement
- 2 A 6m wide tower setback above podium level at Fu Ning Street for a wider visual corridor along Forfar Road
- 3 Circulation splay at Fu Ning Street / Fuk Cheung Street to improve pedestrian circulation and visual permeability
- 4 A 20m All-weather canopy to ease visitor waiting for taxi pick-up / drop off and to facilitate circulation for pedestrians waiting at the traffic lights and potential security control in the future
- 5 At-grade tree plantings with lawn coverage on G/F to enhance streetscape amenity and promote visual interest and pedestrian comfort
- 6 Communal podium garden with outdoor seatings on 8/F to act as breathing space for Hospital staff and visitors (under management control) and to improve the visual connection to the street
- 7 A balcony with edge planting on 6/F to allow for visual relief
- 8 Landscape Treatments at R/F to promote visual interest (Please see Appendix 2 for the Conceptual Landscape Proposal)
- 9 Vertical Greening at façade facing Fu Ning Street to break down the visual mass and facilitate visual permeability
- 10 Planters on the western façade facing Hoover Court at levels M/F to 8/F to alleviate the potential adverse visual impacts
- 11 Green coloured pattern wall mural on western facade facing Hoover Court at levels G/F to 8/F to improve aesthetic
- 12 A minimum 650mm building setback from the southwestern lot boundary is provided to minimise potential impacts on air ventilation and sunlight penetration
- 13 Sensitive building façade treatment with contrasting wall tones and variations in façade design to create visual interest

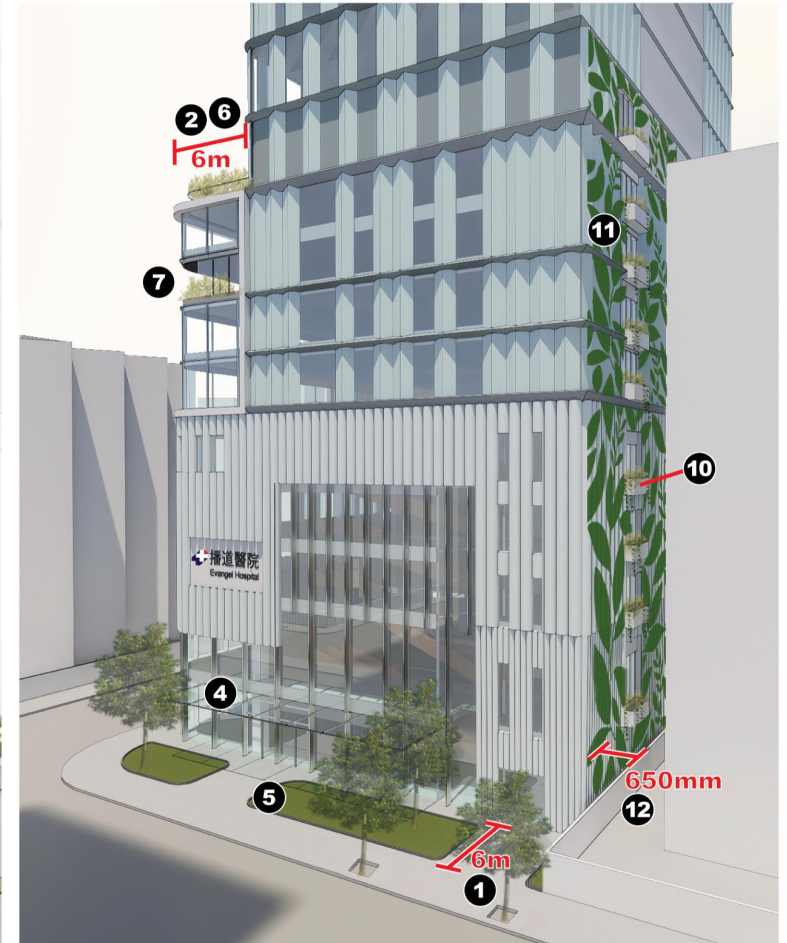
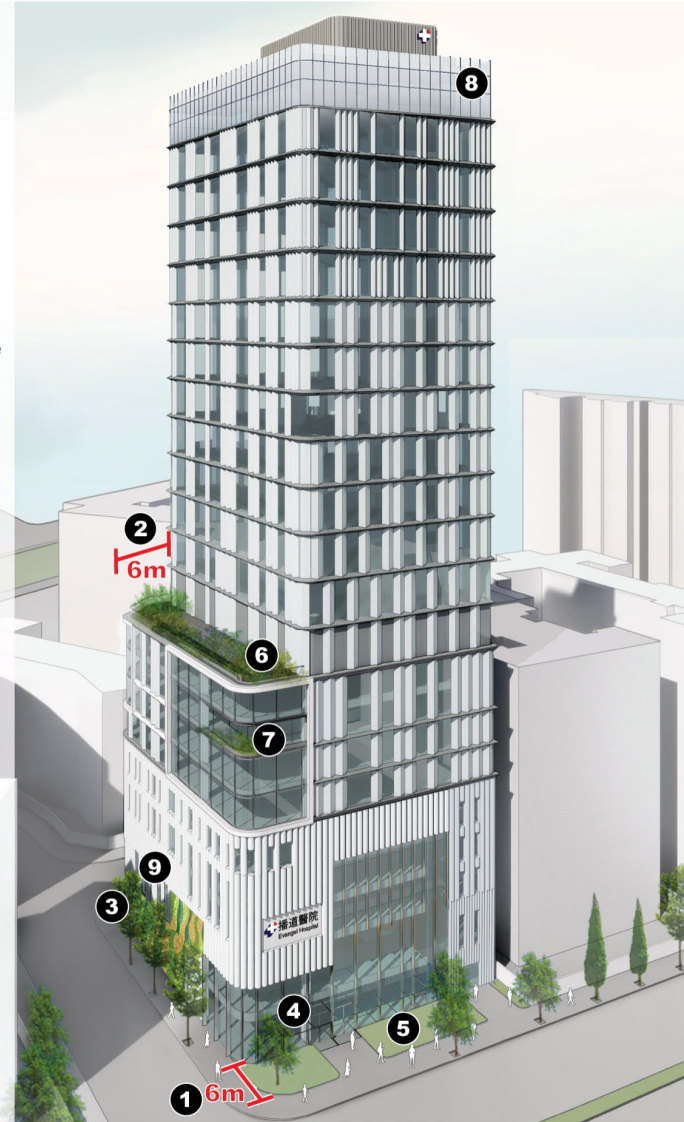
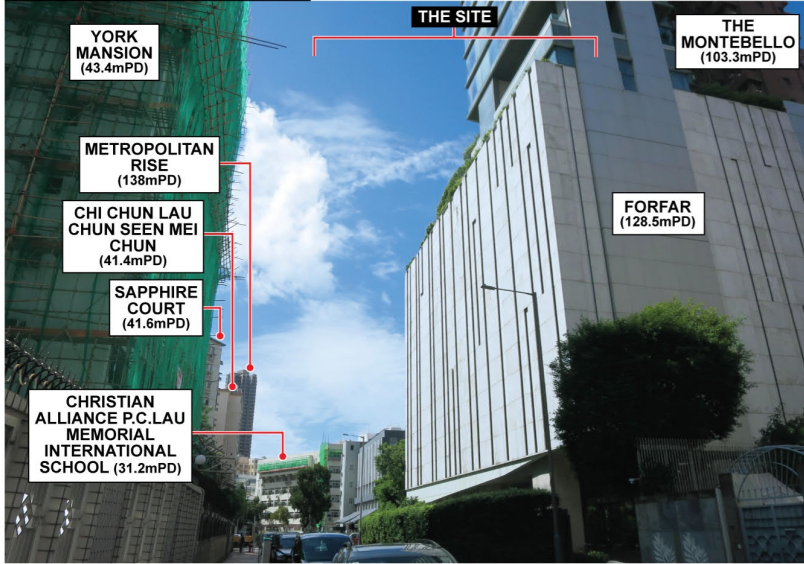


FIGURE 4.3 DESIGN FEATURES (INDICATIVE ONLY)

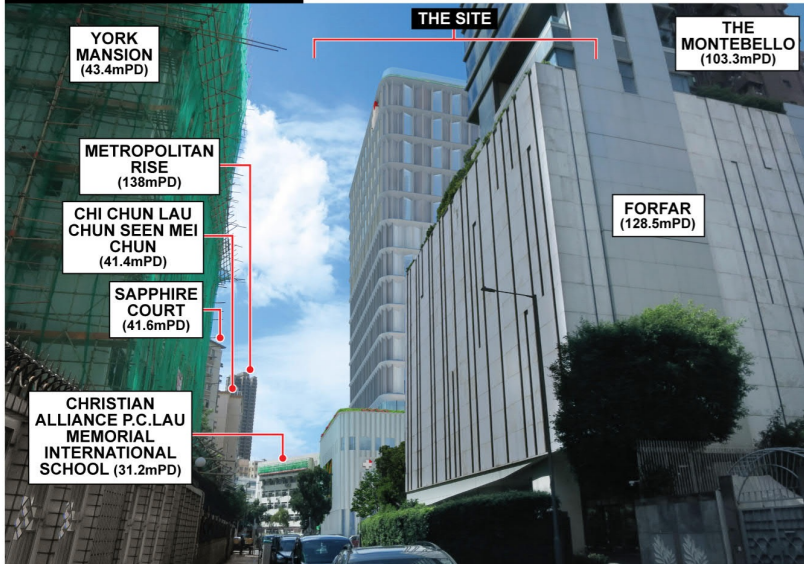
ASFNS

參考編號 REFERENCE No. R/S/K10/31	繪圖 DRAWING H - 2
-------------------------------------	------------------------

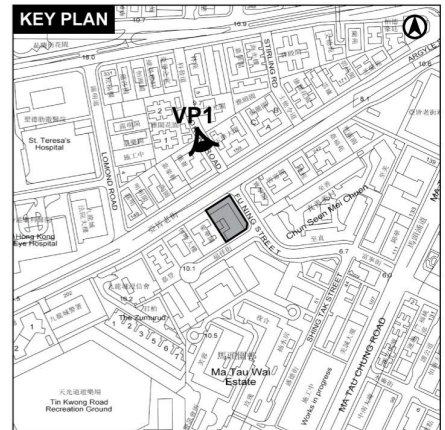
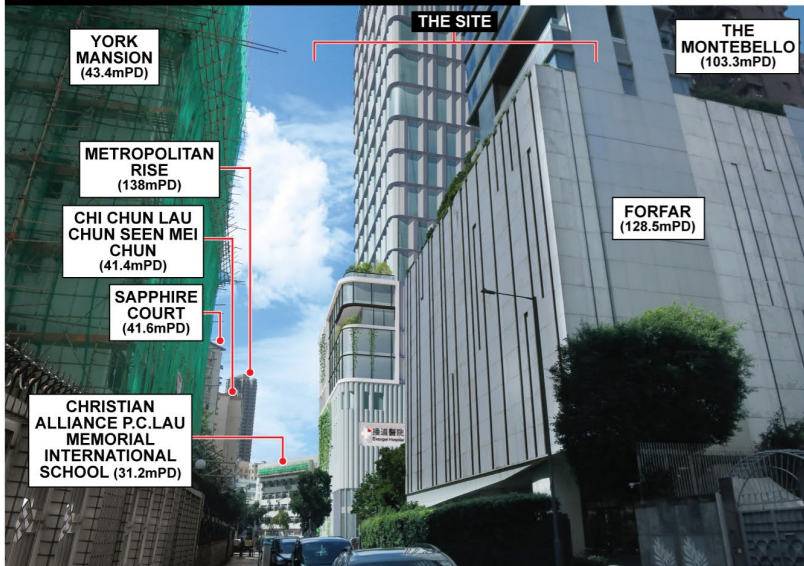
EXISTING CONDITION



APPROVED SCHEME



INDICATIVE DEVELOPMENT SCHEME



ASFNS

FIGURE 10 VIEWPOINT 1 : VIEW FROM THE SIDEWALK OF FORFAR ROAD

參考編號 REFERENCE No. R/S/K10/31	繪圖 DRAWING H - 3
--	-------------------------------

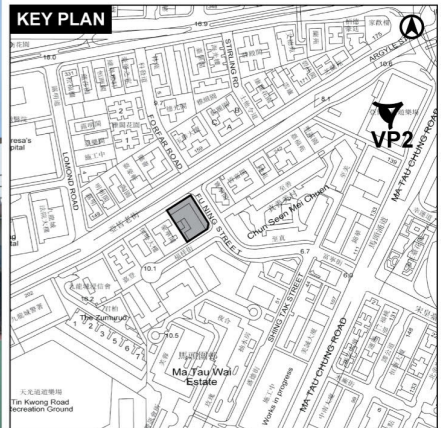
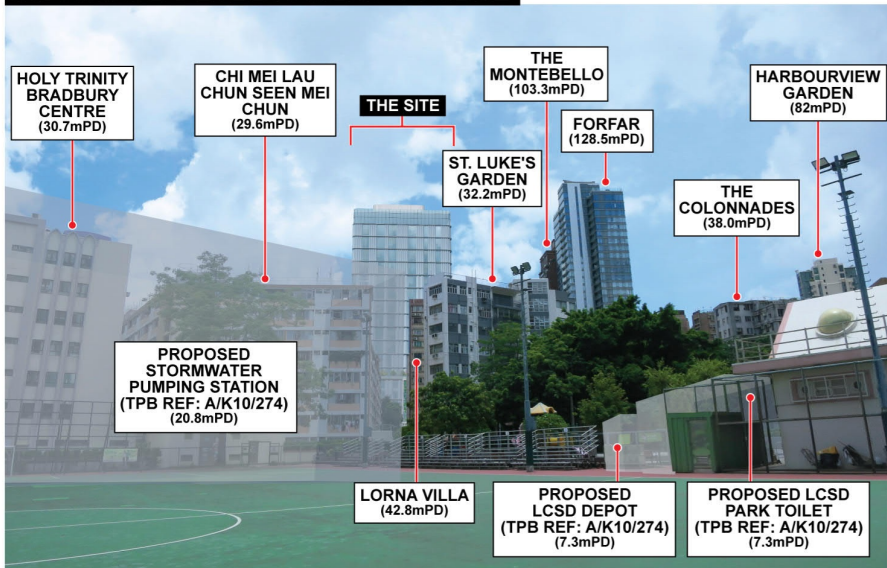
EXISTING CONDITION



APPROVED SCHEME



INDICATIVE DEVELOPMENT SCHEME



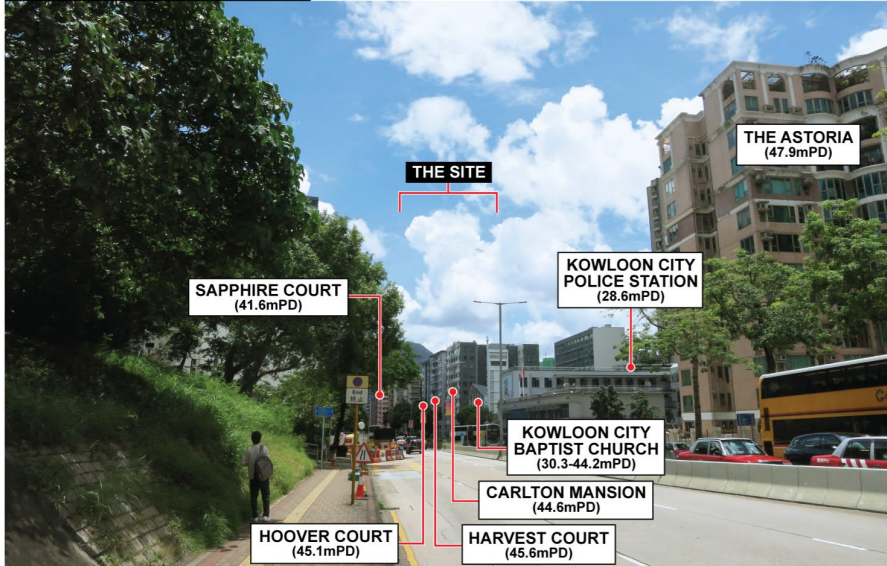
ASFNS

FIGURE 11 VIEWPOINT 2 : VIEW FROM THE SOCCER PITCH WITHIN ARGYLE STREET PLAYGROUND

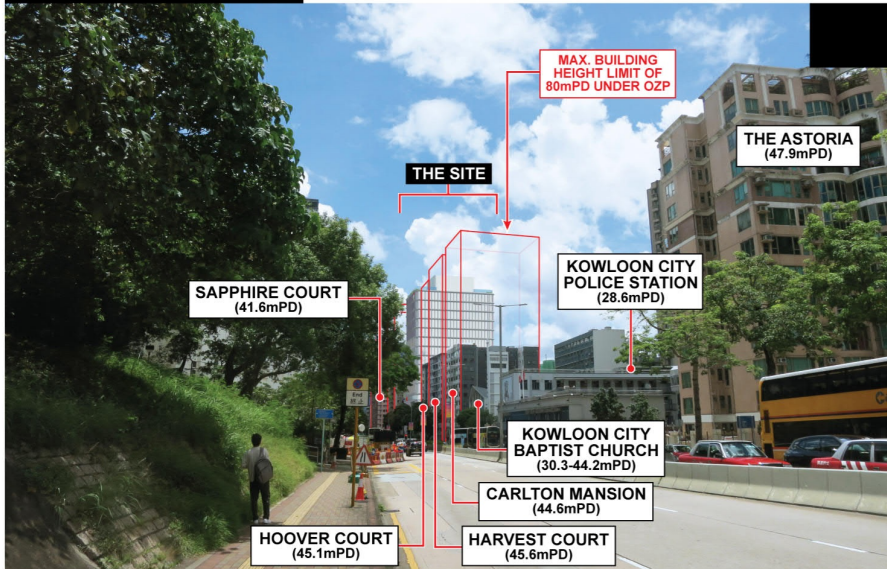
參考編號
REFERENCE No.
R/S/K10/31

繪圖
**DRAWING
H - 4**

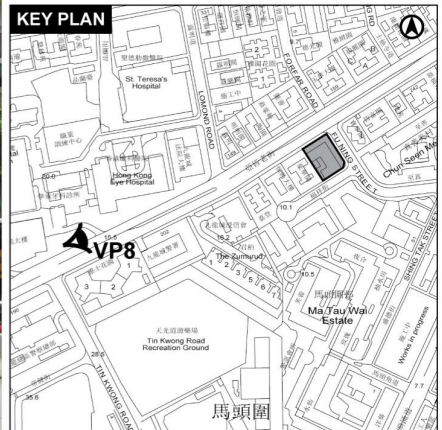
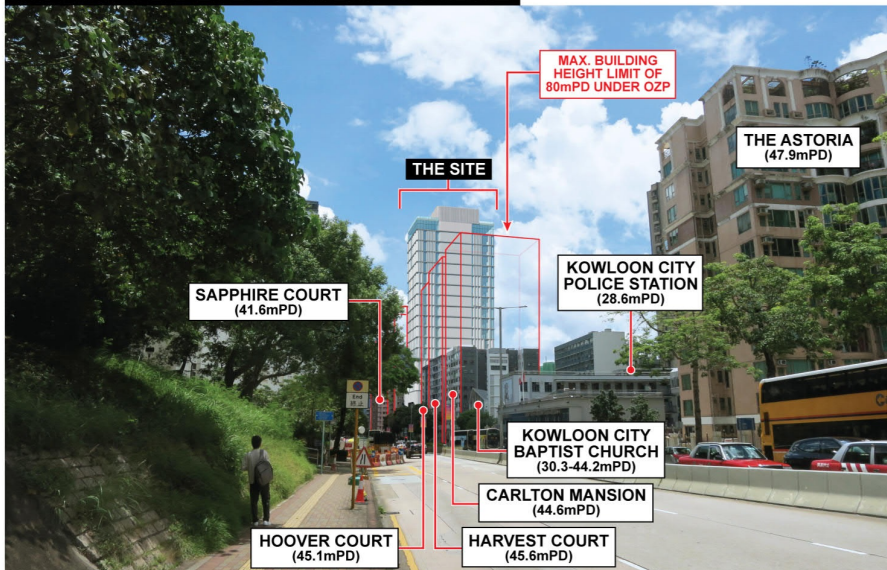
EXISTING CONDITION



APPROVED SCHEME



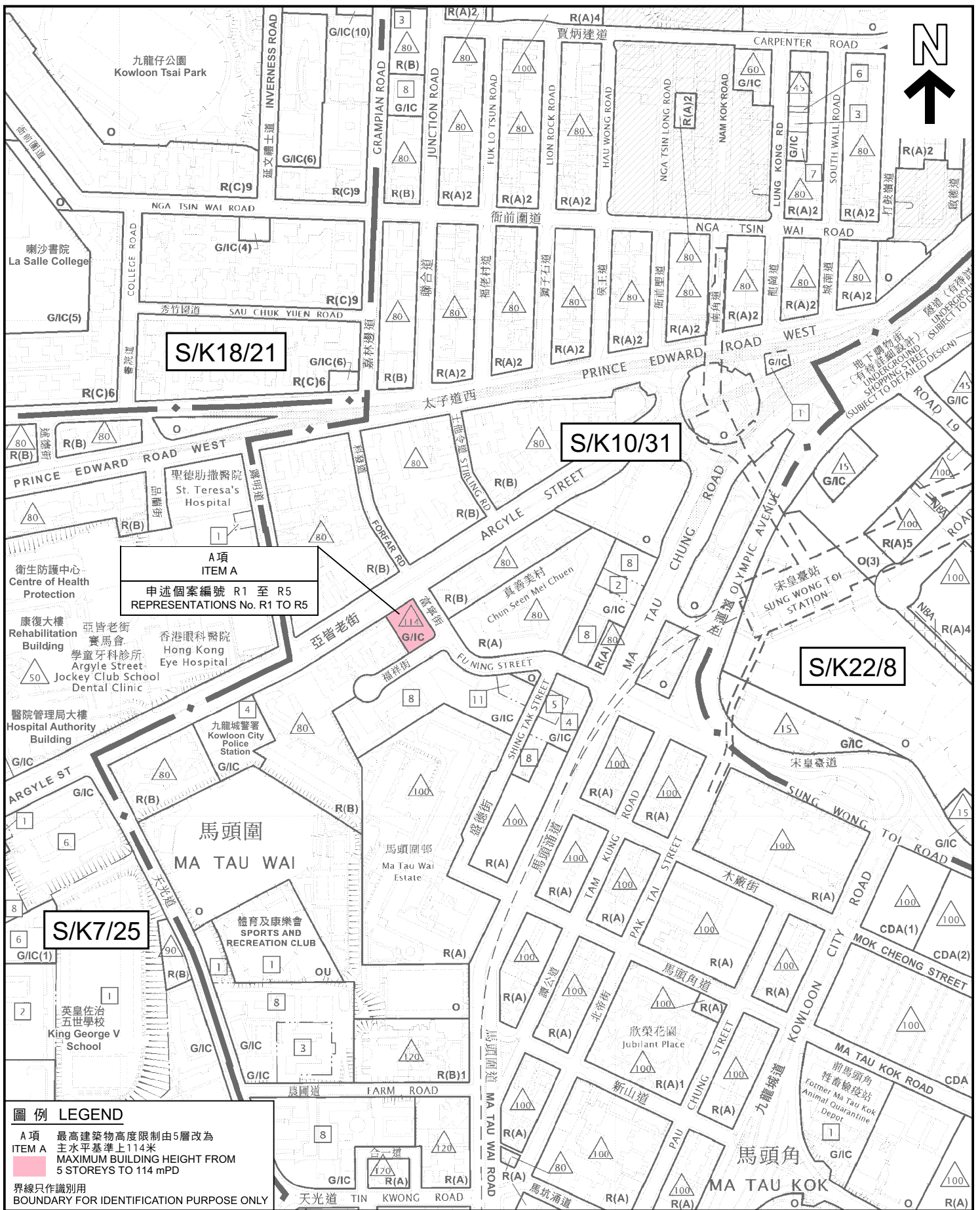
INDICATIVE DEVELOPMENT SCHEME



ASFNS

FIGURE 14 VIEWPOINT 8 : VIEW FROM FOOTPATH OUTSIDE HOSPITAL AUTHORITY BUILDING

參考編號 REFERENCE No. R/S/K10/31	繪圖 DRAWING H - 5
--	-------------------------------



圖例 LEGEND

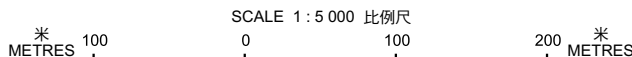
A 項 最高建築物高度限制由5層改為
 ITEM A MAXIMUM BUILDING HEIGHT FROM
 5 STOREYS TO 114 mPD
 界線只作識別用
 BOUNDARY FOR IDENTIFICATION PURPOSE ONLY

位置圖 LOCATION PLAN

就馬頭角分區計劃大綱草圖
 編號S/K10/31提出的申述個案編號R1至R5作出考慮
 (A 項)

CONSIDERATION OF REPRESENTATIONS No. R1 TO R5
 TO THE DRAFT MA TAU KOK OUTLINE ZONING PLAN No. S/K10/31
 (ITEM A)

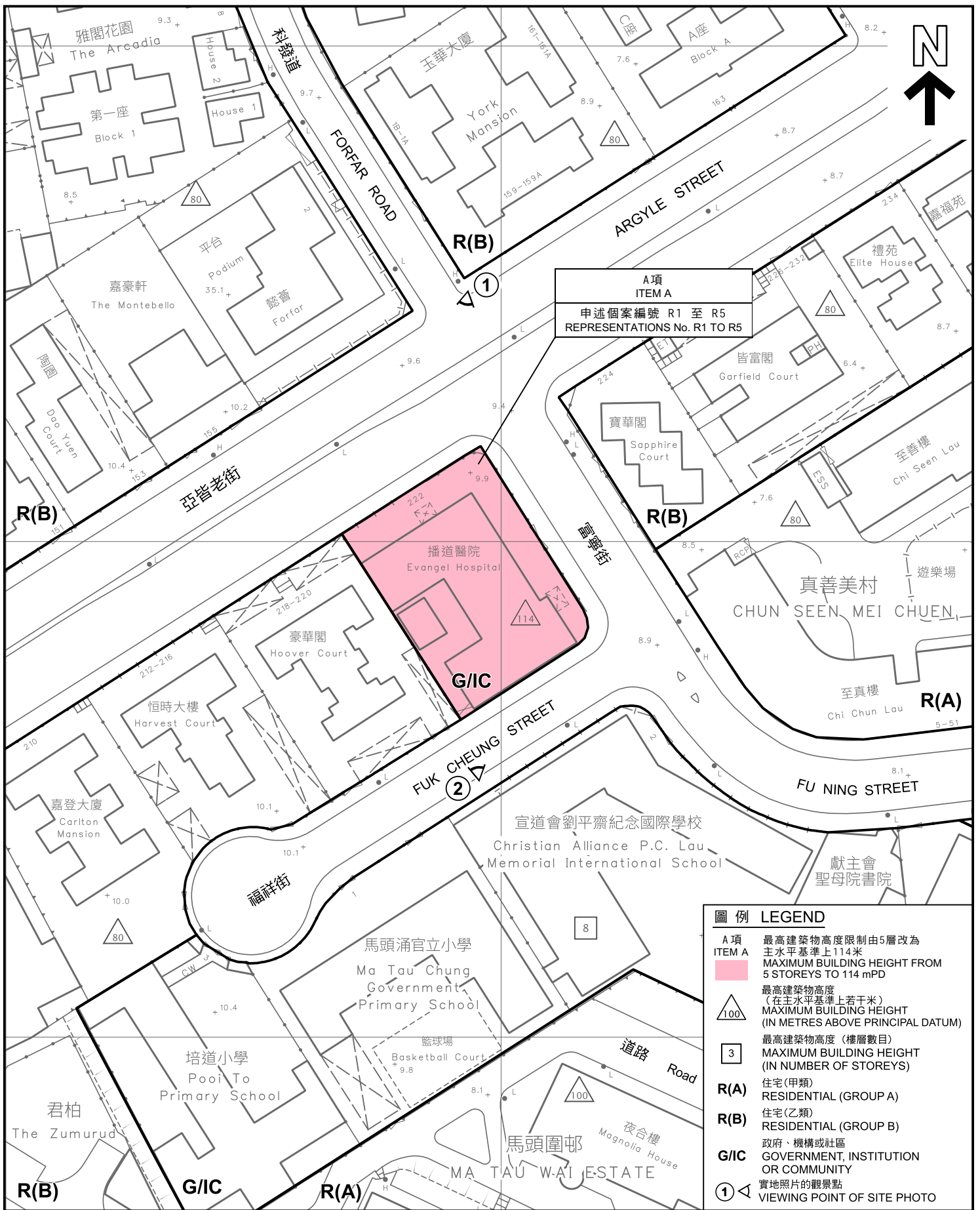
本摘要圖於2026年5月8日擬備，所根據的資料為
 於2025年11月14日展示的分區計劃大綱圖編號S/K7/25，
 於2025年12月24日展示的分區計劃大綱圖編號S/K10/31，
 於2017年12月5日核准的分區計劃大綱圖編號S/K18/21和
 於2022年10月18日核准的分區計劃大綱圖編號S/K22/8
 EXTRACT PLAN PREPARED ON 8.5.2026
 BASED ON OUTLINE ZONING PLANS No.
 S/K7/25 EXHIBITED ON 14.11.2025,
 S/K10/31 EXHIBITED ON 24.12.2025,
 S/K18/21 APPROVED ON 5.12.2017 AND
 S/K22/8 APPROVED ON 18.10.2022



規劃署
 Planning Department

參考編號
 REFERENCE No.
R/S/K10/31

圖 PLAN
H - 1



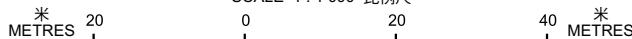
圖例 LEGEND	
A 項 ITEM A	最高建築物高度限制由5層改為 主水平基準上114米 MAXIMUM BUILDING HEIGHT FROM 5 STOREYS TO 114 mPD
	最高建築物高度 (在主水平基準上若干米) MAXIMUM BUILDING HEIGHT (IN METRES ABOVE PRINCIPAL DATUM)
	最高建築物高度 (樓層數目) MAXIMUM BUILDING HEIGHT (IN NUMBER OF STOREYS)
	住宅(甲類) RESIDENTIAL (GROUP A)
R(A)	住宅(乙類) RESIDENTIAL (GROUP B)
R(B)	政府、機構或社區 GOVERNMENT, INSTITUTION OR COMMUNITY
G/IC	實地照片的觀景點 VIEWING POINT OF SITE PHOTO

平面圖 SITE PLAN

就馬頭角分區計劃大綱草圖
編號S/K10/31提出的申述個案編號R1至R5作出考慮
(A項)

CONSIDERATION OF REPRESENTATIONS No. R1 TO R5
TO THE DRAFT MA TAU KOK OUTLINE ZONING PLAN No. S/K10/31
(ITEM A)

SCALE 1 : 1 000 比例尺



本摘要圖於2026年3月26日擬備，
所根據的資料為測量圖編號
11-NW-15D

EXTRACT PLAN PREPARED ON 26.3.2026
BASED ON SURVEY SHEET No.
11-NW-15D



規劃署

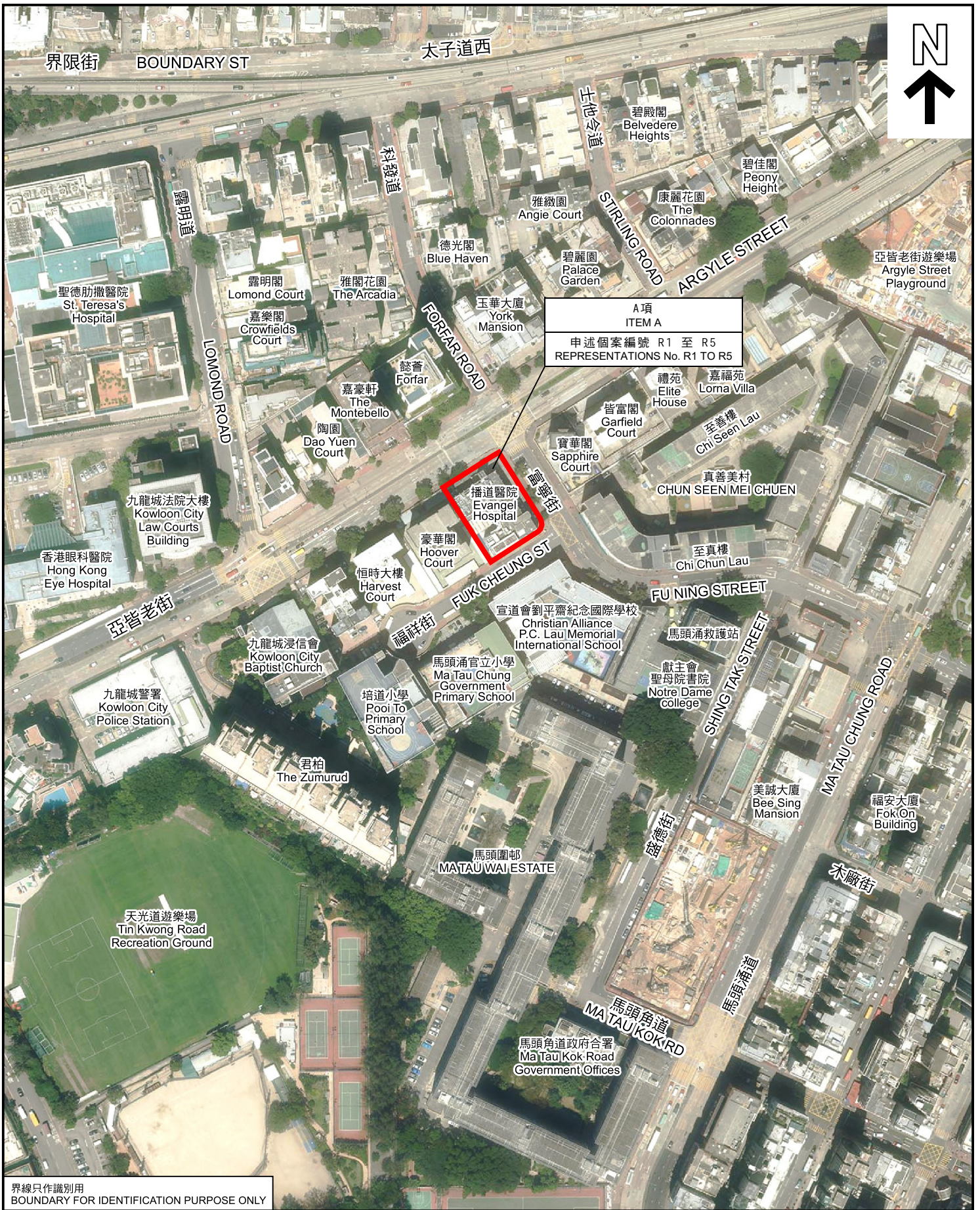
Planning Department

參考編號
REFERENCE No.

R/S/K10/31

圖 PLAN

H - 2



界線只作識別用
BOUNDARY FOR IDENTIFICATION PURPOSE ONLY

本圖於2026年3月26日擬備，
所根據的資料為地政總署於
2025年9月12日拍得的航攝照片編號
E259097C

PLAN PREPARED ON 26.3.2026
BASED ON AERIAL PHOTO No.
E259097C TAKEN ON 12.9.2025
BY LANDS DEPARTMENT

航攝照片 AERIAL PHOTO

就馬頭角分區計劃大綱草圖
編號S/K10/31提出的申述個案編號R1至R5作出考慮
(A項)
CONSIDERATION OF REPRESENTATIONS No. R1 TO R5
TO THE DRAFT MA TAU KOK OUTLINE ZONING PLAN No. S/K10/31
(ITEM A)



規劃署
Planning Department

參考編號
REFERENCE No.
R/S/K10/31

圖 PLAN
H - 3

1

宣道會劉平齋
紀念國際學校
Christian Alliance
P.C. Lau Memorial
International School



2



界線只作識別用
BOUNDARY FOR IDENTIFICATION
PURPOSE ONLY

本圖於2026年5月8日擬備，
所根據的資料為攝於
2026年3月25日的實地照片
PLAN PREPARED ON 8.5.2026
BASED ON SITE PHOTOS
TAKEN ON 25.3.2026

實地照片 SITE PHOTOS

就馬頭角分區計劃大綱草圖
編號S/K10/31提出的申述個案編號R1至R5作出考慮
(A項)
CONSIDERATION OF REPRESENTATIONS No. R1 TO R5
TO THE DRAFT MA TAU KOK OUTLINE ZONING PLAN No. S/K10/31
(ITEM A)



規劃署
Planning Department

參考編號
REFERENCE No.
R/S/K10/31

圖 PLAN
H - 4