


<p>Project 項目名稱:</p> <p>Proposed Temporary Logistics Centre and Ancillary Parking of Vehicle for a Period of 3 Years at Lots 3150 RP(Part), 3151 RP(Part), 3152 RP(Part), 3162 RP, 3163 RP(Part), 3164(Part), 3165, 3166, 3167 S.A(Part), 3168(Part), 3169(Part), 3177(Part), 3178(Part), 3179, 3180, 3181 S.A(Part), 3181 RP(Part), 3182, 3183(Part), 3184(Part), 3187 RP(Part) and 3188 RP(Part) in D.D. 129, & Adjoining Government Land, Ha Tsuen, Yuen Long, N.T.</p>	<p>Drawing Title 圖紙標題:</p> <p>Location Plan</p>  <p>Drawing No. 圖號:</p>	<p>Remarks 備註:</p> <p>Scale 比例:</p>
--	--	-------------------------------------

(摘錄自申請人於 27. 3. 2026 提交的申請書)
 (Extract from Applicant's Submission of 27.3.2026)

<p>參考編號 REFERENCE No. A/HSK/608</p>	<p>繪圖 DRAWING A-1</p>
---	---------------------------

N



Structure 3
F.S. Water Tank
GFA: Not exceeding 45m²
No. of storey: 1
Height: Not exceeding 5m

Structure 7
F.S. Pump
GFA: Not exceeding 21m²
No. of storey: 1
Height: Not exceeding 3m

Structure 2
Water Meter Room
GFA: Not exceeding 4m²
No. of storey: 1
Height: Not exceeding 3m

Structure 4
Converted container
for site office use
GFA: Not exceeding 40m²
No. of storey: 1
Height: Not exceeding 3m

Structure 1
Site Office
GFA: Not exceeding 220m²
No. of storey: 2
Height: Not exceeding 8m

Structure 10
Toilet
GFA: Not exceeding 8m²
No. of storey: 1
Height: Not exceeding 3m

6 parking spaces of
16m x 3.5m for
container vehicle

man-gate

Ingress/
Egress

5 parking spaces of
5m x 2.5m for
private car

5 parking spaces
of 11m x 3.5m for
medium/heavy goods
vehicle

Ramp leading
to the
warehouse

Structure 9
Converted container
for forklift parking
GFA: Not exceeding 40m²
No. of storey: 1
Height: Not exceeding 3m

man-gate

2 Loading/unloading bay
of 11m x 3.5m for heavy
goods vehicle

Structure 6
Electrical Meter Room
GFA: Not exceeding 4m²
No. of storey: 1
Height: Not exceeding 3m

Structure 5
Logistics centre
GFA: Not exceeding 5,491m²
No. of storey: 1
Height: Not exceeding 7.62m

Structure 8
Toilet
GFA: Not exceeding 8m²
No. of storey: 1
Height: Not exceeding 3m

Project 項目名稱:

Proposed Temporary Logistics Centre and Ancillary Parking of Vehicle for a Period of 3 Years at Lots 3150 RP(Part), 3151 RP(Part), 3152 RP(Part), 3162 RP, 3163 RP(Part), 3164(Part), 3165, 3166, 3167 S.A(Part), 3168(Part), 3169(Part), 3177(Part), 3178(Part), 3179, 3180, 3181 S.A(Part), 3181 RP(Part), 3182, 3183(Part), 3184(Part), 3187 RP(Part) and 3188 RP(Part) in D.D. 129, & Adjoining Government Land, Ha Tsuen, Yuen Long, N.T.

Drawing Title 圖紙標題:

Layout Plan



Remarks 備註:

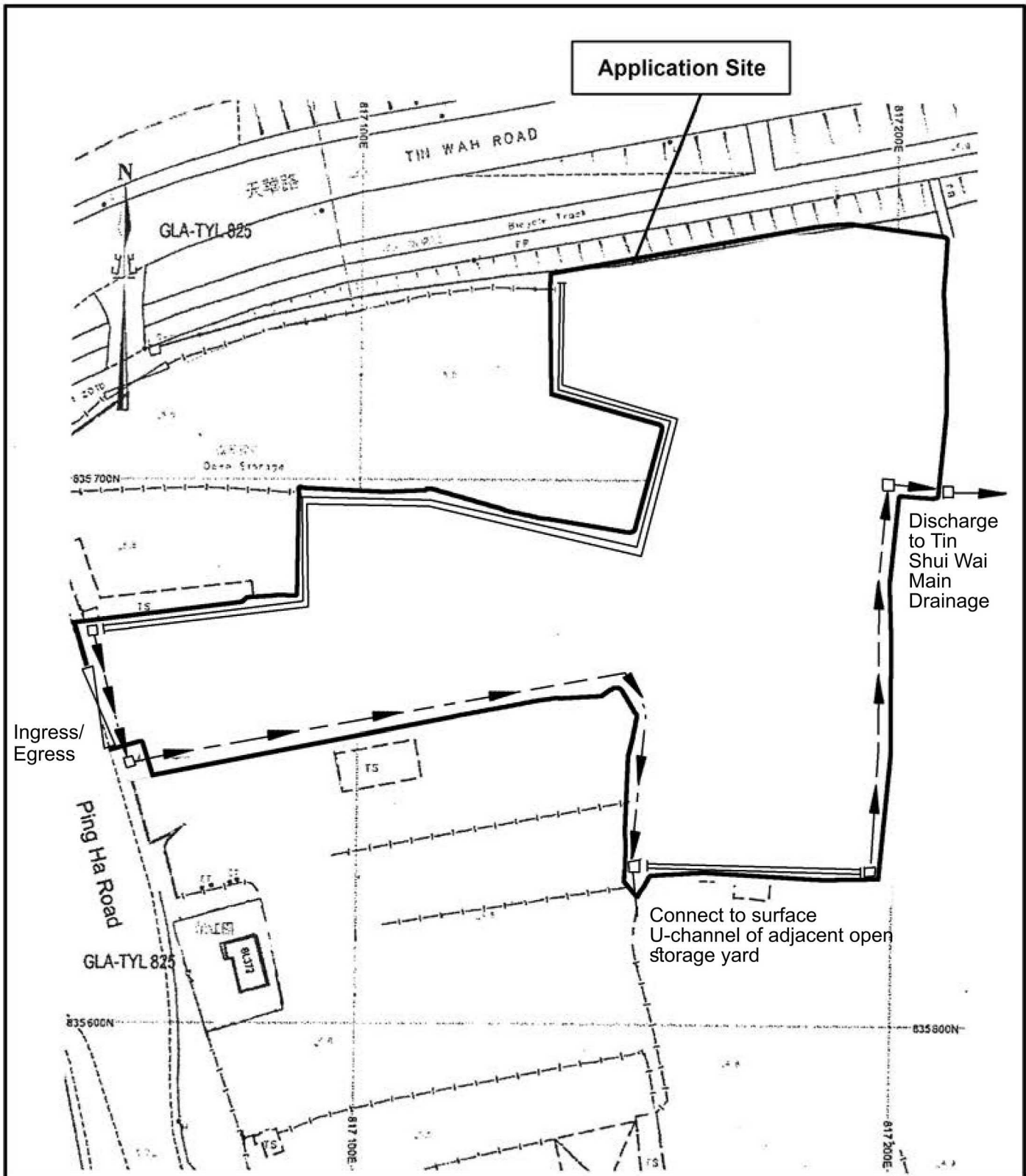
Drawing No. 圖號:

Scale 比例:

(摘錄自申請人於 27. 3. 2026 提交的申請書)
(Extract from Applicant's
Submission of 27.3.2026)

參考編號
REFERENCE No.
A/HSK/608

繪圖 DRAWING
A-2



<p>Project 項目名稱:</p> <p>Proposed Temporary Logistics Centre and Ancillary Parking of Vehicle for a Period of 3 Years at Lots 3150 RP(Part), 3151 RP(Part), 3152 RP(Part), 3162 RP, 3163 RP(Part), 3164(Part), 3165, 3166, 3167 S.A(Part), 3168(Part), 3169(Part), 3177(Part), 3178(Part), 3179, 3180, 3181 S.A(Part), 3181 RP(Part), 3182, 3183(Part), 3184(Part), 3187 RP(Part) and 3188 RP(Part) in D.D. 129, & Adjoining Government Land, Ha Tsuen, Yuen Long, N.T.</p>	<p>Drawing Title 圖紙標題:</p> <p>As-built Drainage Plan (Accepted for previous planning permission No. A/HSK/443)</p>	<p>Remarks 備註:</p> <ul style="list-style-type: none"> ▶ Existing 375mm surface U-channel ▬ Existing 12" high concrete kerb to prevent the flow of surface runoff from the site to adjacent area □ Catchpit
	<p>Drawing No. 圖號:</p>	<p>Scale 比例:</p>

(摘錄自申請人於 6.5.2026 呈交的進一步資料)
 (Extract from Applicant's Further Information Submitted on 6.5.2026)

<p>參考編號 REFERENCE No. A/HSK/608</p>	<p>繪圖 DRAWING A-3</p>
---	---------------------------

APPENDIX I

Proposed Temporary Logistics Centre and Ancillary Parking of Vehicle for a Period of 3 Years at Lots 3150 RP(Part), 3151 RP(Part), 3152 RP(Part), 3162 RP, 3163 RP(Part), 3164(Part), 3165, 3166, 3167 S.A(Part), 3168(Part), 3169(Part), 3177(Part), 3178(Part), 3179, 3180, 3181 S.A(Part), 3181 RP(Part), 3182, 3183(Part), 3184(Part), 3187 RP(Park) and 3188 RP (Park), in D.D. 129 & Adjoining Government Land Ha Tsuen, Yuen Long, N.T.

F.S. NOTES:

1. GENERAL

- FIRE SERVICE INSTALLATIONS SHALL BE PROVIDED IN ACCORDANCE WITH THE CODES OF PRACTICE FOR MINIMUM FIRE SERVICE INSTALLATIONS AND EQUIPMENT AND INSPECTION, TESTING AND MAINTENANCE OF INSTALLATIONS AND EQUIPMENT 2012 (COP 2012), FSD CIRCULAR LETTERS AND THE HONG KONG WATERWORKS STANDARD REQUIREMENTS.
- ALL TUBES AND FITTINGS SHALL BE G.M.S. TO BS1387 MEDIUM GRADE WHERE PIPEWORK UP TO #150mm.
- ALL TUBES AND FITTINGS SHALL BE DUCTILE IRON TO BS EN454 K12 WHERE PIPEWORK ABOVE #150mm.
- ALL DRAIN PIPES SHALL BE DISCHARGED TO A CONSPICUOUS POSITION WITHOUT THE POSSIBILITY OF BEING SUBMERGED.
- ALL PUDDLE FLANGES SHALL BE MADE OF DUCTILE IRON
- THE AGGREGATE AREA OF OPENABLE WINDOWS NOT LESS THAN 6.25% OF THE FLOOR AREA OF THE STRUCTURE

2. HOSE REEL SYSTEM

- NEW FIRE HOSE REEL SHALL BE PROVIDED AS INDICATED ON PLAN TO ENSURE THAT EVERY PART OF THE BUILDING CAN BE REACHED BY A LENGTH OF NOT MORE THAN 30m HOSE REEL TUBING.
- THE WATER SUPPLY FOR HOSE REEL SYSTEM WILL BE FED FROM A NEW 2m³F.S. FIBREGLASS WATER TANK VIA TWO HOSE REEL PUMPS (DUTY/STANDBY) LOCATED INSIDE FS PUMP ROOM AT EXTERNAL AREA.
- HOSE REEL PUMPS SHALL BE STARTED BY ACTIVATION OF ANY BREAKGLASS UNIT FITTED ASIDE EACH HOSE REEL SETS
- ALL FIRE HOSE REEL OUTLETS SHOULD BE HOUSED IN GLASS FRONTED CABINET SECURED UNDER LOCK & KEY.
- ALL FIRE HOSE REEL SHOULD BE PROVIDED WITH FSD APPROVED TYPE INSTRUCTION PLATE & WSD WARNING PLATE
- SECONDARY ELECTRICITY SUPPLY DIRECTLY TEE OFF BEFORE CLP'S INCOMING MAIN SWITCH SHALL BE PROVIDED FOR THE FH/HR PUMPS.

3. AUTOMATIC SPRINKLER SYSTEM

- NEW AUTOMATIC SPRINKLER SYSTEM SHALL BE PROVIDED AND INSTALLED IN ACCORDANCE WITH LPC RULES FOR AUTOMATIC SPRINKLER INSTALLATIONS INCORPORATING BS EN 12845: 2003 (INCLUDING TECHNICAL BULLETINS, NOTES, COMMENTARY AND RECOMMENDATIONS) AND FSD CIRCULAR LETTER NOTES, COMMENTARY AND RECOMMENDATIONS) AND FSD CIRCULAR LETTER NO. 3/2008 AND 3/2012. THE CLASSIFICATION OF THE OCCUPANCY WILL BE ORDINARY HAZARD GROUP II.
- ONE NEW 90m³SPRINKLER WATER TANK WILL BE PROVIDED AS INDICATED ON PLAN. THE TOWN MAIN WATER SUPPLY WILL BE FED FROM SINGLE END.
- TWO NEW SPRINKLER PUMPS (DUTY/STANDBY) AND ONE JOCKEY PUMP SHALL BE PROVIDED IN FS PUMP ROOM LOCATED AT EXTERNAL AREA.
- NEW SPRINKLER CONTROL VALVE SET AND SPRINKLER INLET SHALL BE PROVIDED AS INDICATED ON PLAN.
- A TEST VALVE SHALL BE PROVIDED FOR EACH ZONE OF SPRINKLER PIPE. THIS VALVE SHALL BE AT A CONSPICUOUS POSITION THAT WATER CAN BE DRAINED AWAY EASILY.
- ALL SUBSIDIARY STOP VALVES TO BE ELECTRIC MONITORING TYPE.
- ALL ELECTRIC TYPE VALVES SHOULD GIVE VISUAL SIGNALS TO FIRE SERVICE MAIN SUPERVISORY CONTROL PANEL TO INDICATE THE STATUS (OPEN/CLOSED) OF THE VALVES.
- SECONDARY ELECTRICITY SUPPLY DIRECTLY TEE OFF BEFORE CLP'S INCOMING MAIN SWITCH SHALL BE PROVIDED FOR THE SPRINKLER PUMPS.
- THE SPRINKLER SYSTEM DESIGN IS BASED ON THE FOLLOWINGS:
HAZARD CLASS : ORDINARY HAZARD GROUP II
TYPE OF STORAGE : POST-PALLET (ST2)
STORAGE CATEGORY : CATEGORY I
MAXIMUM STORAGE HEIGHT : 3.5m
SPRINKLER PROTECTION : CEILING PROTECTION ONLY

4. FIRE ALARM SYSTEM

- NEW FIRE ALARM SYSTEM SHALL BE PROVIDED IN ACCORDANCE WITH BS 5839-1:2002 +A2:2008 AND FSD CIRCULAR LETTERS NO. 1/2009 & 3/2010.
- NEW BREAKGLASS UNITS AND FIRE ALARM BELLS SHALL BE PROVIDED AT ALL NEW FIRE HOSE REEL POINTS. THE FIRE ALARM INSTALLATION WILL BE INTEGRATED WITH THE HOSE REEL SYSTEM.
- A NEW FIRE ALARM CONTROL PANEL SHALL BE PROVIDED TO RECEIVE ALL FIRE ALARM SIGNALS FROM BREAKGLASS UNITS AND SPRINKLER FLOW SWITCHES AND TRANSMIT THE SAME TO THE CPTS VIA DIRECT LINK.

5. EMERGENCY LIGHTING

- EMERGENCY LIGHTING SHALL BE PROVIDED IN ACCORDANCE WITH 'BS 5266-PART 1:2011 AND BS EN 1838 2013', COVERING ALL AREA. EMERGENCY LIGHTINGS SHALL BE BACKED UP BY BUILT-IN BATTERY AND CAPABLE OF MAINTAINING FUNCTION OF NOT LESS THAN 2 HOURS IN CASE OF POWER FAILURE

6. EXIT SIGN

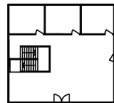
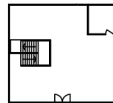
- ALL EXIT SIGNS/DIRECTIONAL EXIT SIGNS SHALL BE PROVIDED IN ACCORDANCE WITH 'BS 5266-PART 1 AND FSD CIRCULAR LETTER NO. 5/2008, AND SECTION 5.10 OF COP 2012 FOR THE BUILDING. EXIT SIGNS/DIRECTIONAL EXIT SIGNS SHALL BE BACKED UP BY BUILT-IN BATTERY AND CAPABLE OF MAINTAINING FUNCTION OF NOT LESS THAN 2 HOURS IN CASE OF POWER FAILURE.

7. PORTABLE APPLIANCES

- PORTABLE HAND OPERATED APPLIANCES SHALL BE PROVIDED AS INDICATED ON PLAN.

Structure 5 Openable Windows Calculation

Area of Structure 1 = 5491sq.m.
 Area of opening 1 = 6.0m(W) x 5.5m(H) = 33 sq.m.
 Area of opening 2 = 6.0m(W) x 5.5m(H) = 33 sq.m.
 Area of opening 3 = 6.0m(W) x 5.5m(H) = 33 sq.m.
 Area of opening 4 = 6.0m(W) x 5.5m(H) = 33 sq.m.
 Area of opening 5 = 6.0m(W) x 5.5m(H) = 33 sq.m.
 Area of opening 6 = 6.0m(W) x 5.5m(H) = 33 sq.m.
 Area of High Bay Window (H.B.W.) 1 = 2.0m(H) x 60m = 120 sq.m.
 Area of High Bay Window (H.B.W.) 2 = 2.0m(H) x 12m = 24 sq.m.
 Area of High Bay Window (H.B.W.) 3 = 2.0m(H) x 12m = 24 sq.m.
 Total openable window area = 33 + 33 + 33 + 33 + 33 + 33 + 120 + 24 + 24 = 366 sq.m.
 = 6.66% of floor area



Site Office Layout

Structure 10
Toilet
GFA: Not exceeding 8m²
No. of storey: 1
Height: Not exceeding 3m

Ingress/Egress

5 parking spaces of 5m x 2.5m for private car

Structure 2
Water Meter Room
GFA: Not exceeding 4m²
No. of storey: 1
Height: Not exceeding 3m

Structure 1
Site office
GFA: Not exceeding 220m²
No. of storey: 2
Height: Not exceeding 8m

5 parking spaces of 11m x 3.5m for medium/heavy goods vehicle

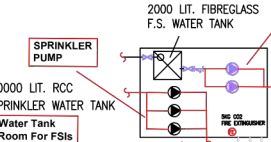
Structure 6
Electricity meter room
GFA: Not exceeding 4m²
No. of storey: 1
Height: Not exceeding 3m

Structure 4
Concentrated containers for site office use
GFA: Not exceeding 40m²
No. of storey: 1
Height: Not exceeding 3m

Structure 9
Concentrated containers for forklift parking
GFA: Not exceeding 40m²
No. of storey: 1
Height: Not exceeding 3m

Structure 3
F.S. Water Tank
GFA: Not exceeding 45m²
No. of storey: 1
Height: Not exceeding 5m

Structure 7
F.S. Pump room
GFA: Not exceeding 21m²
No. of storey: 1
Height: Not exceeding 3m



Structure 5
Logistics centre
GFA: Not exceeding 5,491m²
No. of storey: 1
Height: Not exceeding 7.62m

6 parking spaces of 16m x 3.5m for container vehicle

Area of Opening 1-6

Ramp leading to the warehouse

man-gate

Area of High Bay Window (H.B.W.) 1

Area of High Bay Window (H.B.W.) 2

Area of High Bay Window (H.B.W.) 3

LEGEND

- HR HOSE REEL
- BK BREAK GLASS UNIT
- FB FIRE ALARM BELL

- EL EMERGENCY LIGHT
- EXIT EXIT SIGN
- NRV NON-RETURN VALVE

- FE 5KG CO2 FIRE EXTINGUISHER
- SH SPRINKLER HEAD (ON PLAN)
- SV SUBSIDIARY VALVE / FLOW SWITCH

- SCV SPRINKLER CONTROL VALVE SET
- GV GATE VALVE
- GT GATE TYPE (With MONITORING)

- PS PUMP SET
- YS Y-TYPE STRAINER
- SI SPRINKLER INLET

PROJECT :	Proposed Temporary Logistics Centre and Ancillary Parking of Vehicle for a Period of 3 Years at Lots 3150 RP(Part), 3151 RP(Part), 3152 RP(Part), 3162 RP, 3163 RP(Part), 3164(Part), 3165, 3166, 3167 S.A(Part), 3168(Part), 3169(Part), 3177(Part), 3178(Part), 3179, 3180, 3181 S.A(Part), 3181 RP(Part), 3182, 3183(Part), 3184(Part), 3187 RP(Park) and 3188 RP (Park), in D.D. 129 & Adjoining Government Land Ha Tsuen, Yuen Long, N.T.
DRAWING TITLE :	F.S. Notes, Legend, Fire Service Installation Layout Plan
ARCHITECT :	
CONSULTANT :	
FIRE SERVICE CONTRACTOR :	Century Fire Service Engineering Co., Ltd.
DRAWN BY :	C.K.NG
CHECKED BY :	
APPROVED BY :	
DATE :	14 MAY 2020
DRAWING NO. :	FS-01
REV. :	0
SCALE :	1:300 (A0)
SOURCE :	B.O.O. Ref. BD F.S.D. Ref. FP

REV	DESCRIPTION	DATE

ARCHITECT :	
CONSULTANT :	
FIRE SERVICE CONTRACTOR :	Century Fire Service Engineering Co., Ltd.

DRAWN BY :	C.K.NG
CHECKED BY :	
APPROVED BY :	
DATE :	14 MAY 2020

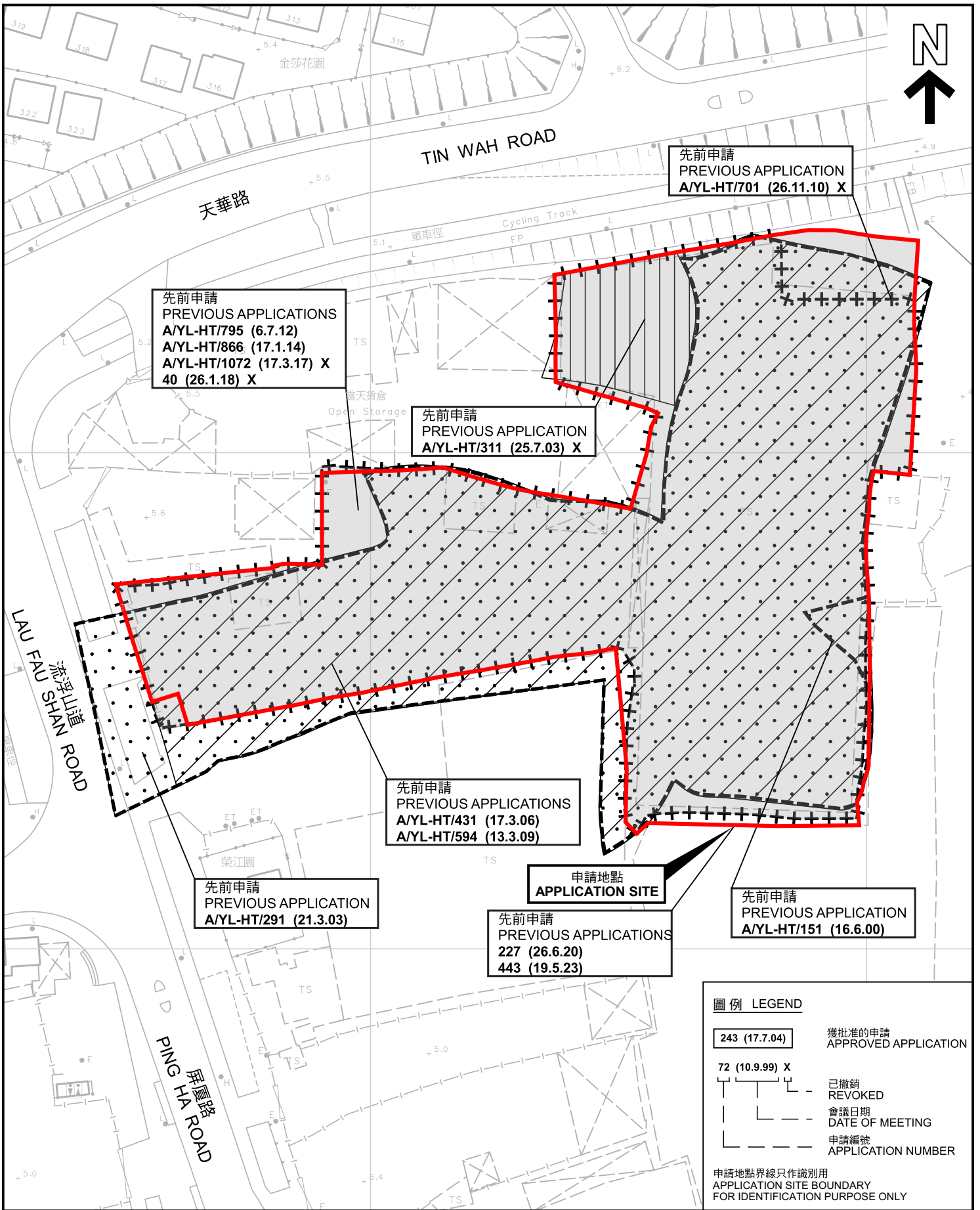
DRAWING NO. :	FS-01
REV. :	0
SCALE :	1:300 (A0)
SOURCE :	B.O.O. Ref. BD F.S.D. Ref. FP

DRAWN BY :	C.K.NG
CHECKED BY :	
APPROVED BY :	
DATE :	14 MAY 2020

DRAWING NO. :	FS-01
REV. :	0
SCALE :	1:300 (A0)
SOURCE :	B.O.O. Ref. BD F.S.D. Ref. FP

(摘錄自申請人於 27. 3. 2026 提交的申請書)
 (Extract from Applicant's Submission of 27.3.2026)

參考編號 REFERENCE No. A/HSK/608	繪圖 DRAWING A-4
------------------------------------	-------------------



先前申請圖 PREVIOUS APPLICATIONS PLAN

臨時物流中心及附屬泊車位的規劃許可續期(為期3年)
 元朗農村丈量約份第129約多個地段和毗連政府土地
 RENEWAL OF PLANNING APPROVAL FOR TEMPORARY LOGISTICS
 CENTRE AND ANCILLARY PARKING OF VEHICLES
 FOR A PERIOD OF 3 YEARS
 VARIOUS LOTS IN D.D.129 AND ADJOINING GOVERNMENT LAND,
 HA TSUEN, YUEN LONG

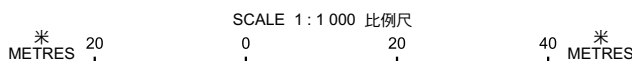


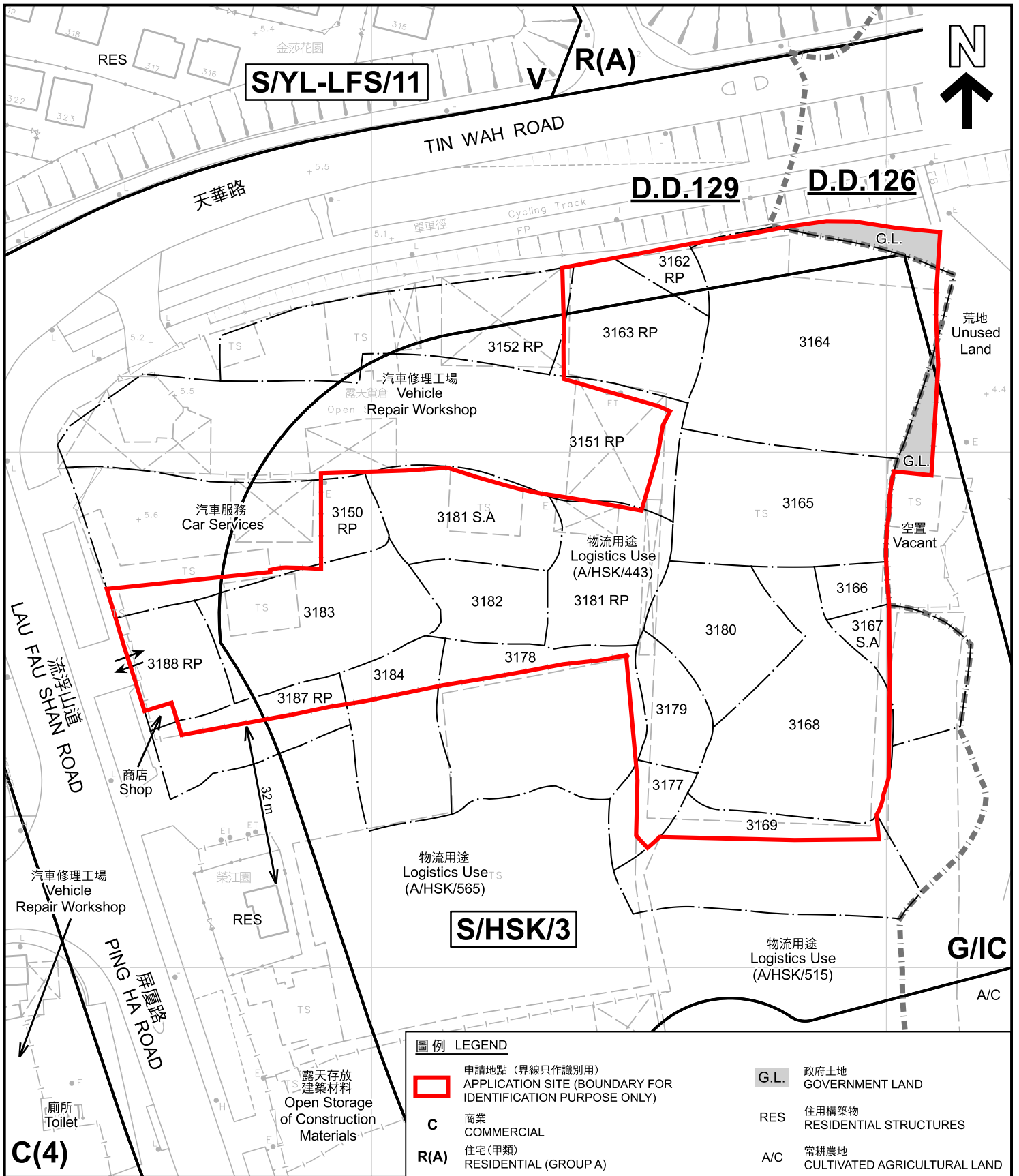
規劃署
 Planning Department

本摘要圖於2026年4月22日擬備，所根據的資料為測量圖編號 6-NW-2A
 EXTRACT PLAN PREPARED ON 22.4.2026
 BASED ON SURVEY SHEET No. 6-NW-2A

參考編號
 REFERENCE No.
A/HSK/608

圖 PLAN
A-1b





註釋 Notes :
 2026年4月10日勘測的土地用途
 Land uses shown on this plan are in accordance with the land use survey conducted by the Planning Department on 10.4.2026

圖例 LEGEND	
	申請地點 (界線只作識別用) APPLICATION SITE (BOUNDARY FOR IDENTIFICATION PURPOSE ONLY)
C	商業 COMMERCIAL
R(A)	住宅(甲類) RESIDENTIAL (GROUP A)
V	鄉村式發展 VILLAGE TYPE DEVELOPMENT
G/I/C	政府、機構或社區 GOVERNMENT, INSTITUTION OR COMMUNITY
G.L.	政府土地 GOVERNMENT LAND
RES	住用構築物 RESIDENTIAL STRUCTURES
A/C	常耕農地 CULTIVATED AGRICULTURAL LAND
	丈量約份界線 D.D. BOUNDARY
	入口/出口 INGRESS / EGRESS

本摘要圖於2026年4月22日擬備，所根據的資料為測量圖編號 6-NW-2A
 EXTRACT PLAN PREPARED ON 22.4.2026
 BASED ON SURVEY SHEET No. 6-NW-2A

平面圖 SITE PLAN

臨時物流中心及附屬泊車位的規劃許可續期(為期3年)
 元朗農村丈量約份第129約多個地段和毗連政府土地
 RENEWAL OF PLANNING APPROVAL FOR TEMPORARY LOGISTICS CENTRE AND ANCILLARY PARKING OF VEHICLES FOR A PERIOD OF 3 YEARS
 VARIOUS LOTS IN D.D.129 AND ADJOINING GOVERNMENT LAND, HA TSUEN, YUEN LONG

SCALE 1: 1 000 比例尺

規劃署
 Planning Department

參考編號 REFERENCE No. A/HSK/608	圖 PLAN A-2
---	----------------------