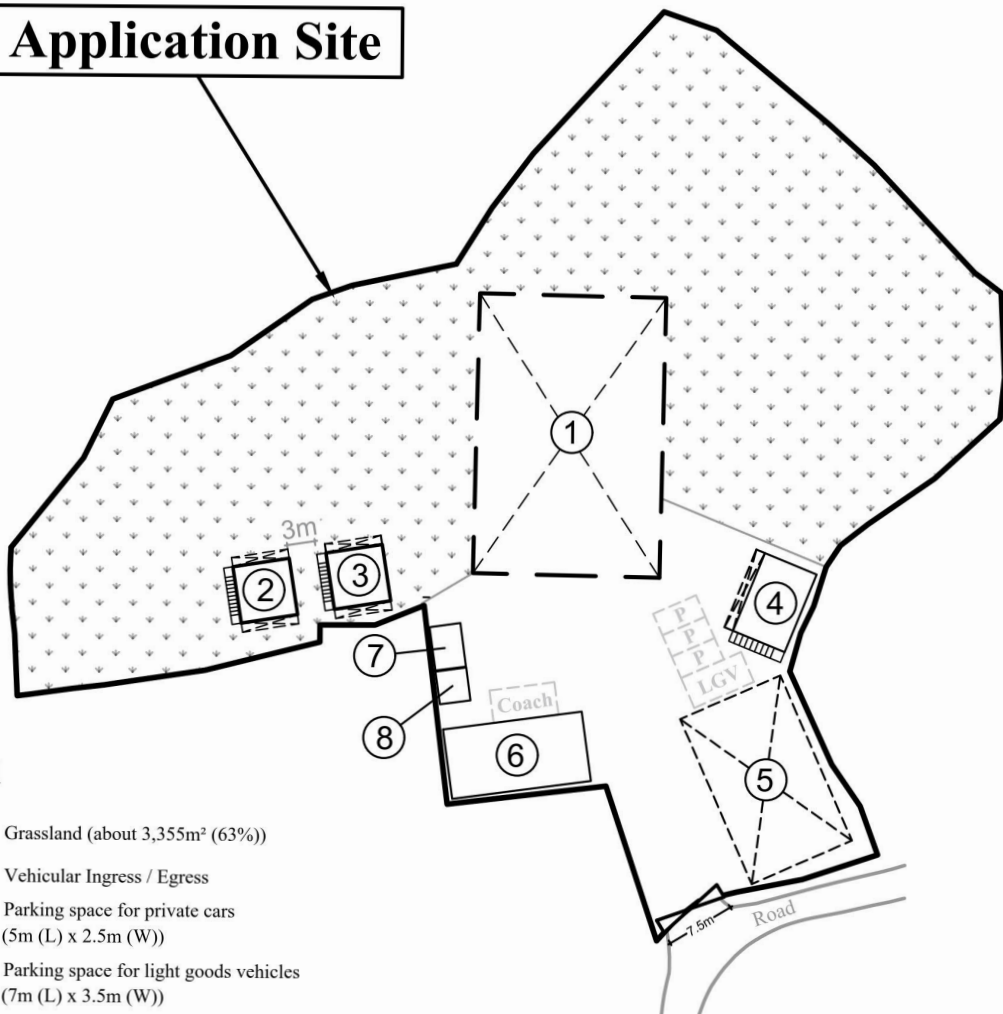




# Application Site



## Legend

- Grassland (about 3,355m<sup>2</sup> (63%))
- Vehicular Ingress / Egress
- Parking space for private cars  
(5m (L) x 2.5m (W))
- Parking space for light goods vehicles  
(7m (L) x 3.5m (W))
- Parking space for coaches  
(7m (L) x 3.5m (W))

Site Area: about 5,330m<sup>2</sup>

No.	Structure / Use	Floor Area (about)	Covered Area (about)	Height	No. of Storeys
1	Open Shed	600m <sup>2</sup>	600m <sup>2</sup>	7m	1
2	G/F: Multi-function Room (Animal activity room, social event room and ancillary office)	56m <sup>2</sup>	56m <sup>2</sup>	7m	2
	I/F: Roof	37m <sup>2</sup>			
3	G/F: Multi-function Room (Animal activity room, social event room and ancillary office)	56m <sup>2</sup>	56m <sup>2</sup>	7m	2
	I/F: Roof	37m <sup>2</sup>			
4	G/F: Multi-function Room (Animal activity room, social event room and ancillary office)	67m <sup>2</sup>	67m <sup>2</sup>	7m	2
	I/F: Roof	58m <sup>2</sup>			
5	Open Shed	226m <sup>2</sup>	226m <sup>2</sup>	7m	1
6	Multi-function Room (Animal activity room, social event room and ancillary office)	225m <sup>2</sup>	112.5m <sup>2</sup>	7m	2
7	Toilet	15m <sup>2</sup>	15m <sup>2</sup>	5m	1
8	Toilet	12m <sup>2</sup>	12m <sup>2</sup>	5m	1
Total:		1,389m <sup>2</sup>	1,144.5m <sup>2</sup>		

1:750

## Layout Plan

Goldrich Planners & Surveyors Ltd.

August 2025

Lots 1464(part), 1466(part), 1486(Part), 1489(Part), 1494(part)  
and adjoining Government Land in D. D. 107  
Yuen Long, New Territories

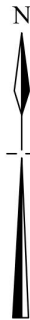
Plan 3  
( P22034 )

(摘錄自申請人於 27. 8. 2025 呈交的申請書)  
(Extract from Applicant's  
Submission of 27.8.2025)

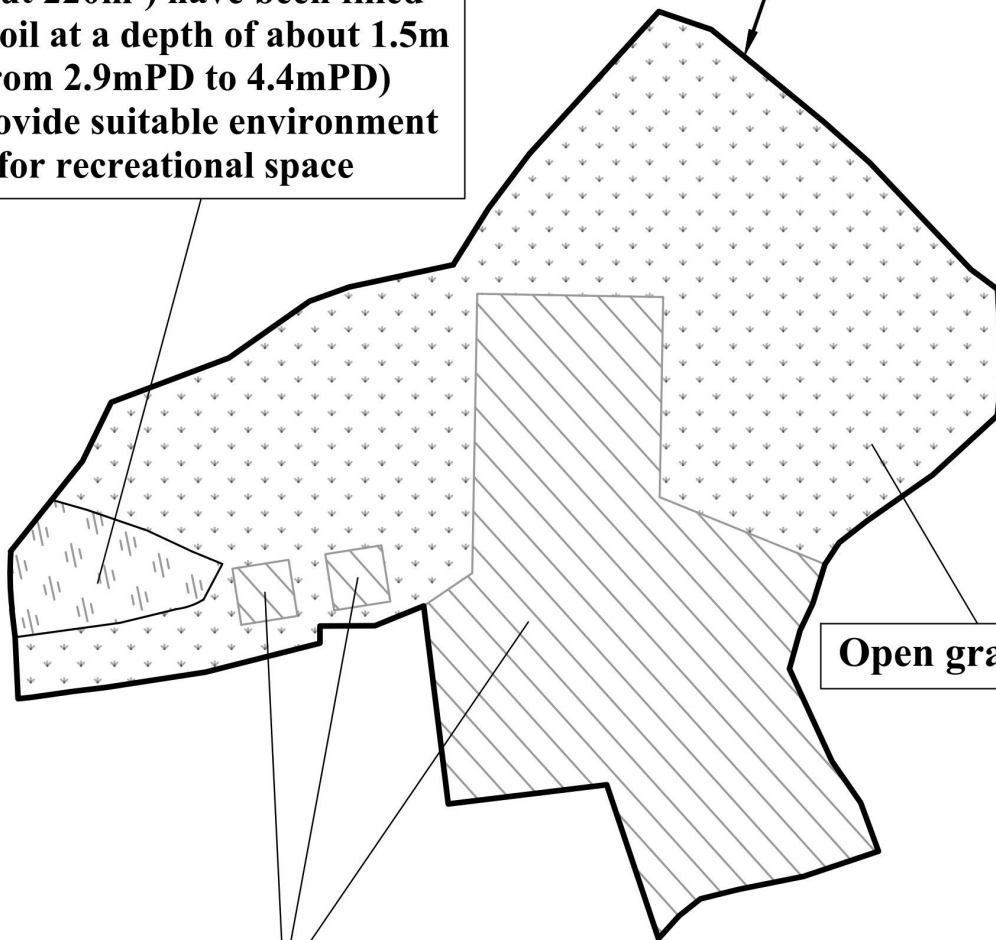
參考編號  
REFERENCE No.  
AYL-KTN/1164

繪圖  
DRAWING  
A - 1

**Application Site**

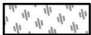




This portion of pond (about 220m<sup>2</sup>) have been filled with soil at a depth of about 1.5m (from 2.9mPD to 4.4mPD) to provide suitable environment for recreational space



**Open grass land**

About 37% of the site have been paved with concrete at a depth of about 0.2m (from 4.4mPD to 4.6mPD) to provide solid ground for erection of structures and vehicle maneuvering

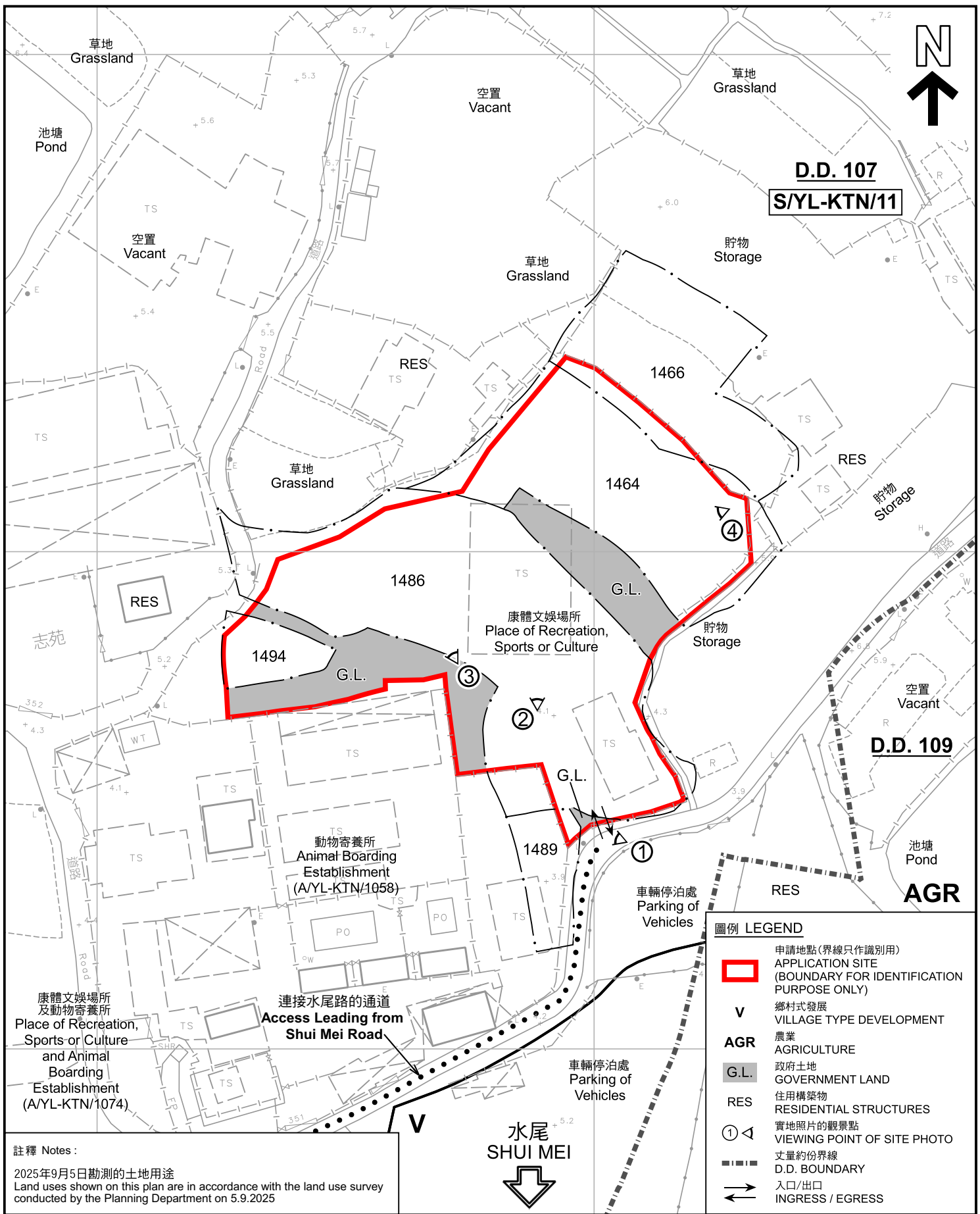
	<b>Filled Pond Area(about) :</b>	<b>220m<sup>2</sup> (4%)</b>
	<b>Open Grass Land(about) :</b>	<b>3,135m<sup>2</sup> (59%)</b>
	<b>Paved Area(about) :</b>	<b>1,975m<sup>2</sup> (37%)</b>
<b>Total Site Area(about) :</b>		<b>5,330m<sup>2</sup> (100%)</b>

N.T.S	<b>Plan Showing Existing Filling of Land and Pond</b>	<b>Goldrich Planners &amp; Surveyors Ltd.</b>
August 2025	Lots 1464(part), 1466(part), 1486(Part), 1489(Part), 1494(part) and adjoining Government Land in D. D. 107 Yuen Long, New Territories	Plan 7 ( P22034 )

(摘錄自申請人於 27. 8. 2025 提交的申請書)  
(Extract from Applicant's Submission of 27.8.2025)

參考編號 REFERENCE No. A/YL-KTN/1164	繪圖 DRAWING A - 2
--	------------------------





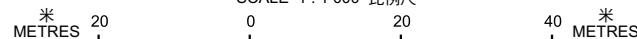
**平面圖 SITE PLAN**

本摘要圖於2026年5月12日擬備，  
所根據的資料為測量圖編號  
6-NE-7A

EXTRACT PLAN PREPARED ON 12.5.2026  
BASED ON SURVEY SHEET No.  
6-NE-7A

臨時康體文娛場所及動物寄養所連附屬設施和相關的填土及填塘工程(為期3年)  
新界元朗錦田丈量約份第107約地段第1464號(部分)、第1466號(部分)、  
第1486號(部分)、第1489號(部分)及第1494號(部分)和毗連政府土地  
TEMPORARY PLACE OF RECREATION, SPORTS OR CULTURE AND  
ANIMAL BOARDING ESTABLISHMENT WITH ANCILLARY FACILITIES AND  
ASSOCIATED FILLING OF LAND AND POND FOR A PERIOD OF 3 YEARS  
LOTS 1464 (PART), 1466 (PART), 1486 (PART), 1489 (PART) AND 1494 (PART)  
IN D.D. 107 AND ADJOINING GOVERNMENT LAND, KAM TIN,  
YUEN LONG, NEW TERRITORIES

SCALE 1 : 1 000 比例尺

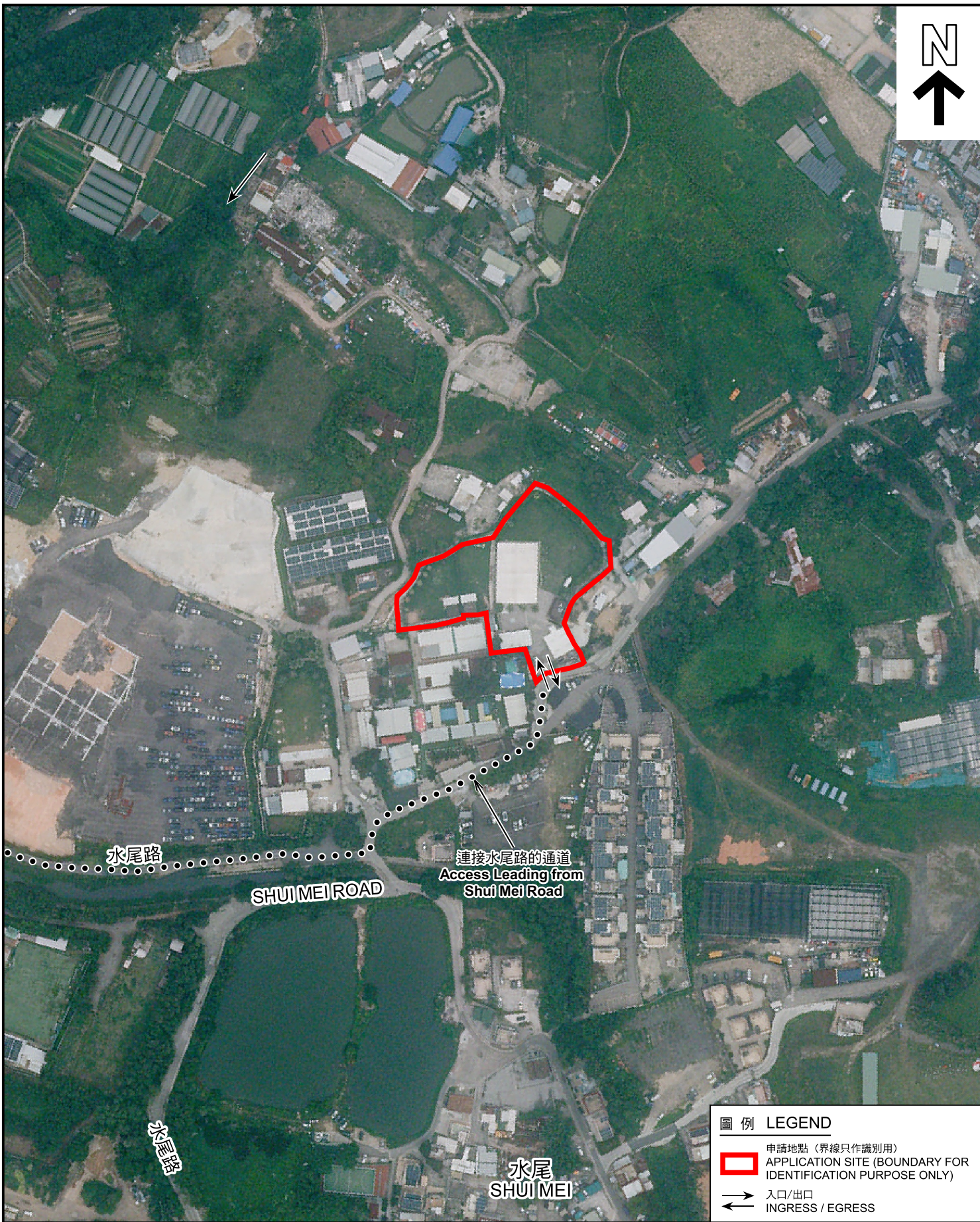


**規劃署**

Planning Department

參考編號  
REFERENCE No.  
A/YL-KTN/1164

圖 PLAN  
A-2



圖例 LEGEND

-  申請地點 (界線只作識別用)  
APPLICATION SITE (BOUNDARY FOR IDENTIFICATION PURPOSE ONLY)
-  入口/出口  
INGRESS / EGRESS

航攝照片 AERIAL PHOTO

本摘要圖於2026年5月14日擬備，  
所根據的資料為地政總署於2025年5月26日  
拍得的航攝照片編號 E257299C  
EXTRACT PLAN PREPARED ON 14.5.2026  
BASED ON AERIAL PHOTOS No.  
E257299C TAKEN ON 26.5.2025  
BY LANDS DEPARTMENT

臨時康體文娛場所及動物寄養所連附屬設施和相關的填土及填塘工程(為期3年)  
新界元朗錦田丈量約份第107約地段第1464號(部分)、第1466號(部分)、  
第1486號(部分)、第1489號(部分)及第1494號(部分)和毗連政府土地  
TEMPORARY PLACE OF RECREATION, SPORTS OR CULTURE AND  
ANIMAL BOARDING ESTABLISHMENT WITH ANCILLARY FACILITIES AND  
ASSOCIATED FILLING OF LAND AND POND FOR A PERIOD OF 3 YEARS  
LOTS 1464 (PART), 1466 (PART), 1486 (PART), 1489 (PART) AND 1494 (PART)  
IN D.D. 107 AND ADJOINING GOVERNMENT LAND, KAM TIN,  
YUEN LONG, NEW TERRITORIES



規劃署  
Planning Department

參考編號  
REFERENCE No.  
AYL-KTN/1164

圖 PLAN  
A-3

1



申請地點界線只作識別用 APPLICATION SITE BOUNDARY FOR IDENTIFICATION PURPOSE ONLY

### 實地照片 SITE PHOTOS

本圖於2026年5月6日擬備，所根據的資料為攝於2026年5月5日的實地照片  
PLAN PREPARED ON 6.5.2026  
BASED ON SITE PHOTOS  
TAKEN ON 5.5.2026

臨時康體文娛場所及動物寄養所連附屬設施和相關的填土及填塘工程(為期3年)  
新界元朗錦田丈量約份第107約地段第1464號(部分)、第1466號(部分)、  
第1486號(部分)、第1489號(部分)及第1494號(部分)和毗連政府土地  
TEMPORARY PLACE OF RECREATION, SPORTS OR CULTURE AND  
ANIMAL BOARDING ESTABLISHMENT WITH ANCILLARY FACILITIES AND  
ASSOCIATED FILLING OF LAND AND POND FOR A PERIOD OF 3 YEARS  
LOTS 1464 (PART), 1466 (PART), 1486 (PART), 1489 (PART) AND 1494 (PART)  
IN D.D. 107 AND ADJOINING GOVERNMENT LAND, KAM TIN,  
YUEN LONG, NEW TERRITORIES



規劃署  
Planning Department

參考編號  
REFERENCE No.  
A/YL-KTN/1164

圖 PLAN  
A-4