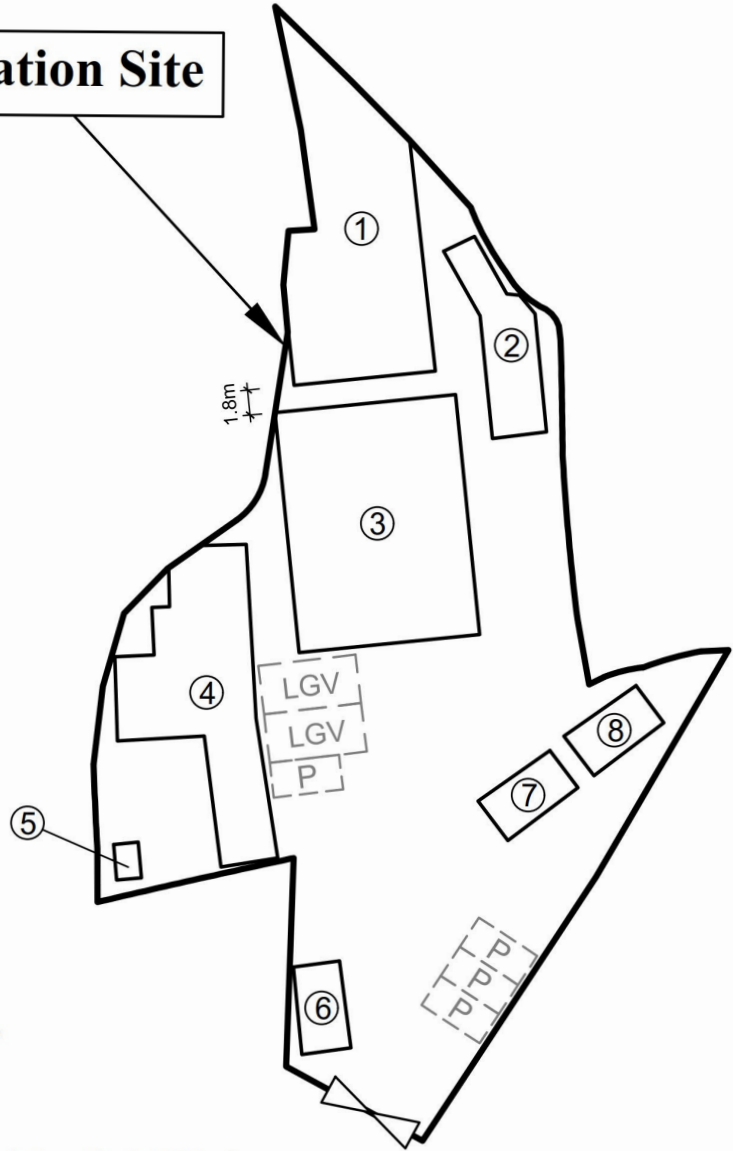

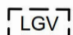
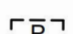




# Application Site



## Legend

-  Vehicular Ingress / Egress
-  Parking space for light goods vehicle (7m (L) x 3.5m (W))
-  Parking space for private cars (5m (L) x 2.5m (W))

Site Area(about): 1,705m<sup>2</sup>

No.	Uses	Floor Area (about)	Covered Area (about)	Storeys	Height
1	Warehouse with Ancillary Office	193 m <sup>2</sup>	193 m <sup>2</sup>	1	8m
2	Warehouse	50 m <sup>2</sup>	50 m <sup>2</sup>	1	8m
3	Warehouse	225 m <sup>2</sup>	225 m <sup>2</sup>	1	8m
4	Warehouse with Ancillary Office	143 m <sup>2</sup>	143 m <sup>2</sup>	1	8m
5	Storeroom	5 m <sup>2</sup>	5 m <sup>2</sup>	1	4.5m
6	Ancillary Office	22 m <sup>2</sup>	22 m <sup>2</sup>	1	4.5m
7	Storeroom	22 m <sup>2</sup>	22 m <sup>2</sup>	1	4.5m
8	Storeroom	22 m <sup>2</sup>	22 m <sup>2</sup>	1	4.5m
Total		<u>682 m<sup>2</sup></u>	<u>682 m<sup>2</sup></u>		

<del>1:500</del>	<b>Layout Plan</b>	<b>Goldrich Planners &amp; Surveyors Ltd.</b>
<b>February 2026</b>	Lot 1348(Part) and 76RP (part) in DD.109	<b>Plan 3 ( P 25094 )</b>

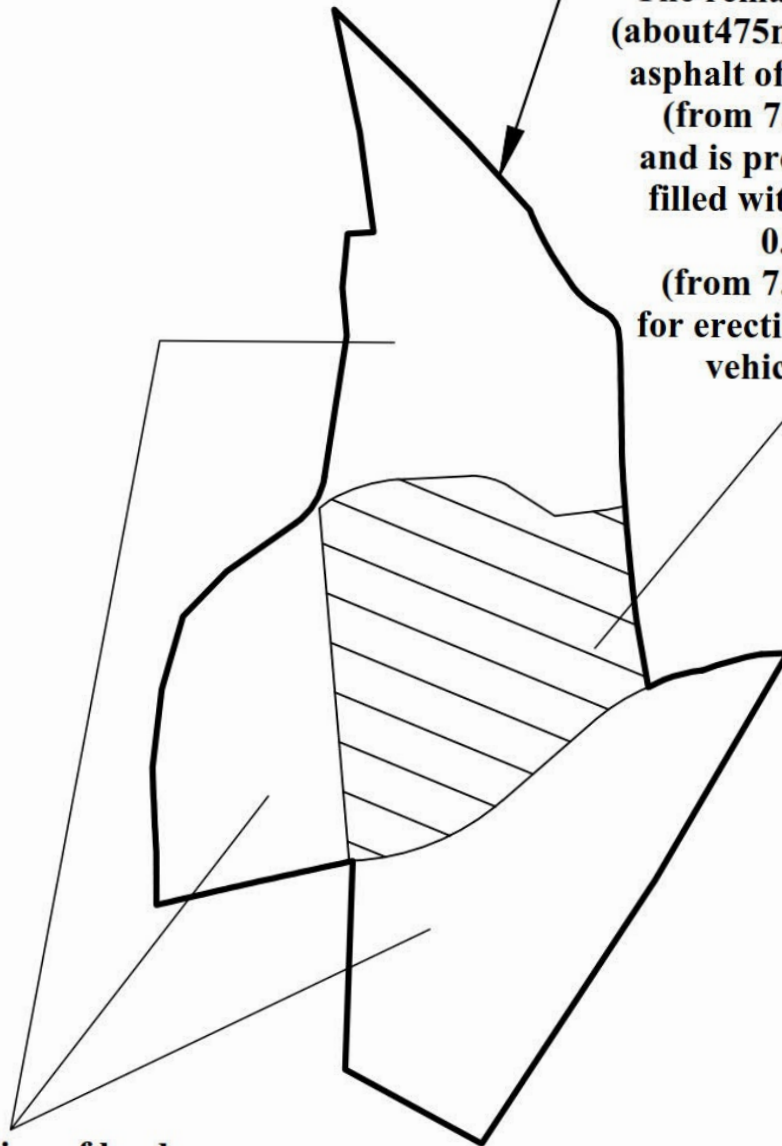
(摘錄自申請人於 1. 4. 2026 呈交的補充規劃書)  
(Extract from Applicant's Supplementary Planning Statement of 1.4.2026)

參考編號 REFERENCE No. AYL-KTN/1226	繪圖 DRAWING A - 1
---------------------------------------	------------------------



**Application Site**

The remaining area of the site (about 475m<sup>2</sup>) has been filled with asphalt of about 0.1m in depth (from 7.5mPD to 7.6mPD) and is proposed to be further filled with concrete of about 0.1m in depth (from 7.6mPD to 7.7mPD) for erection of structures and vehicle maneuvering



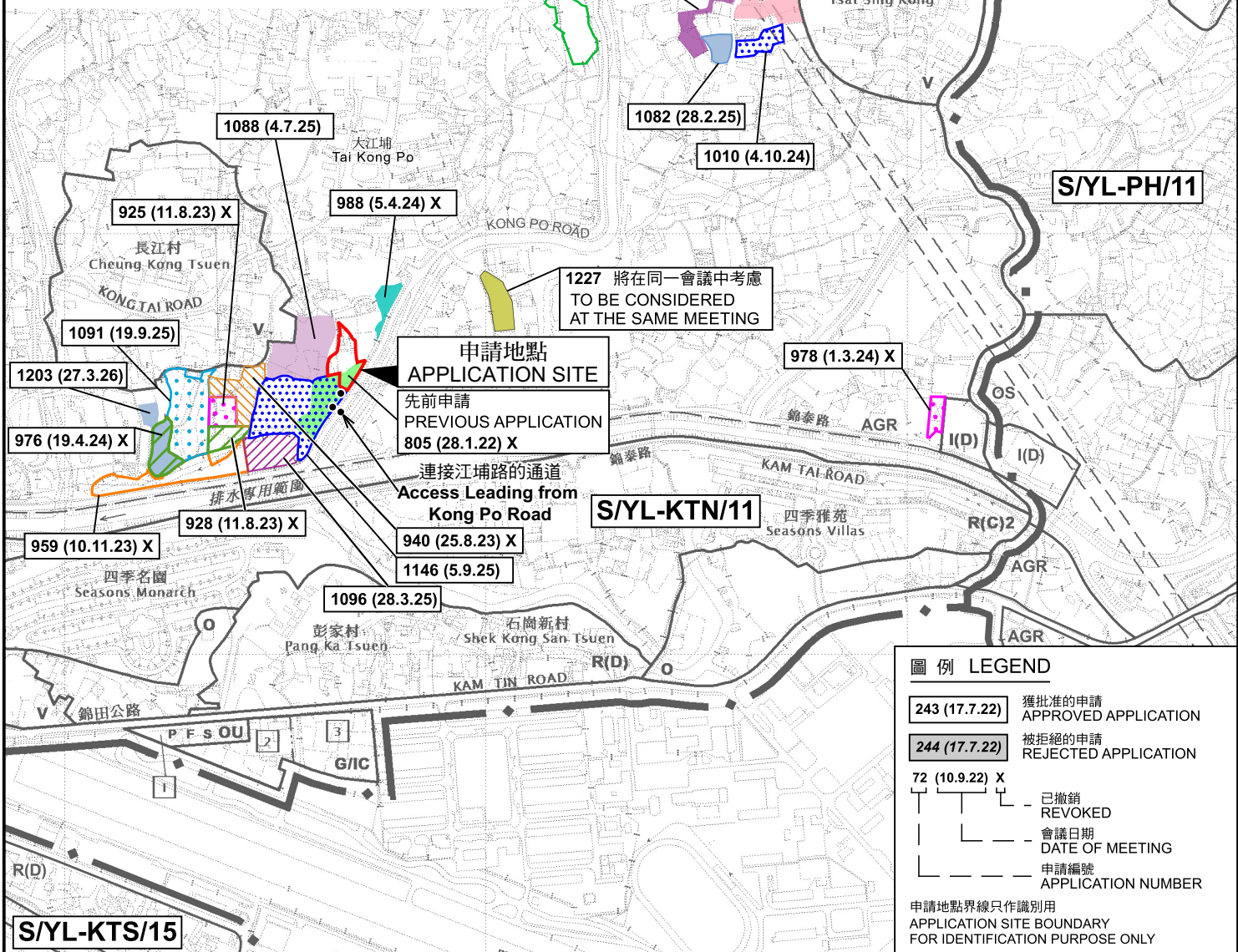
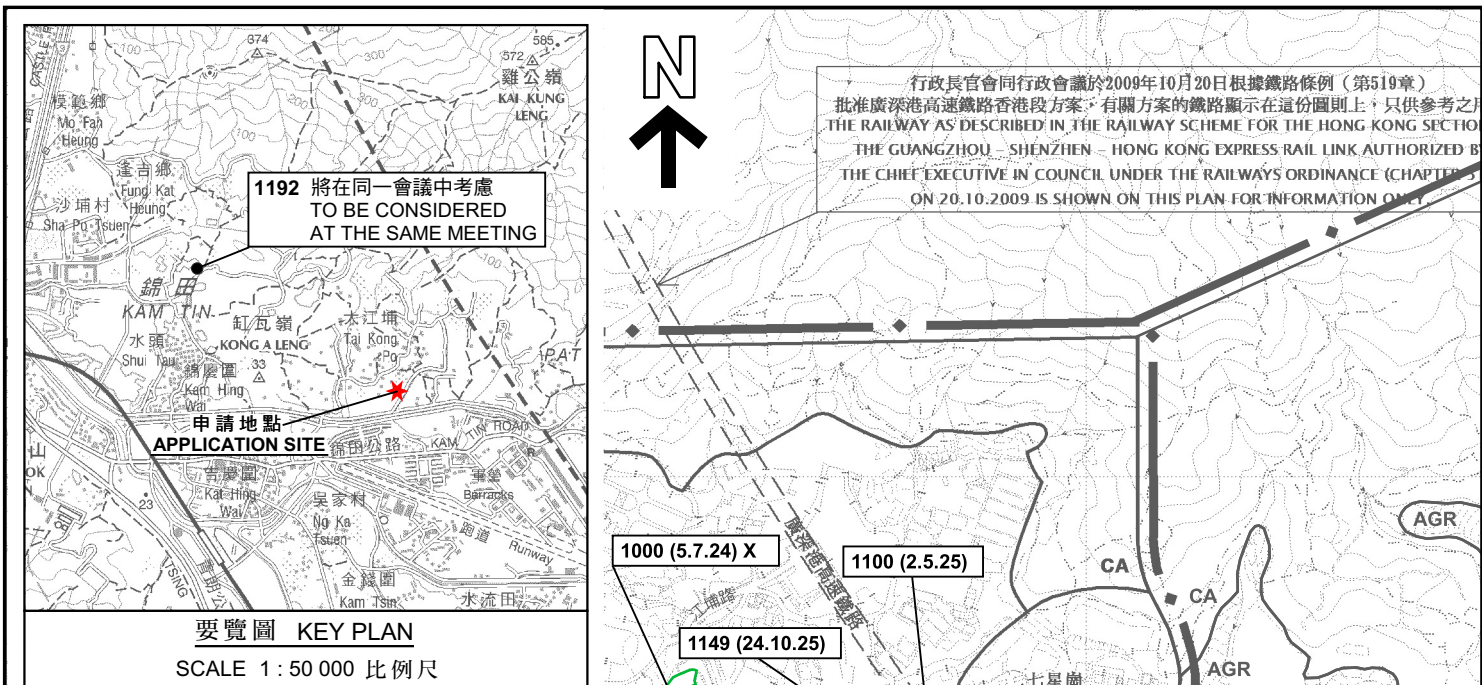
This portion of land (about 1,230m<sup>2</sup>) has been paved with concrete of about 0.2m in depth (from 7.3mPD to 7.5mPD) for erection of structures.

**Site Area(about): 1,705m<sup>2</sup>**

N.T.S	<b>Plan Showing Filling of Land</b>	Goldrich Planners & Surveyors Ltd.
May 2026	Lot 1348(Part) and 76RP (part) in DD.109	Plan 5a ( P 25094 )

(摘錄自申請人於 14. 5. 2026 呈交的進一步資料)  
(Extract from Applicant's Further Information Submitted on 14.5.2026)

參考編號 REFERENCE No. AYL-KTN/1226	繪圖 DRAWING A - 2
---------------------------------------	------------------------



本摘要圖於2026年5月19日擬備，所根據的資料為於2023年12月5日核准的分區計劃大綱圖編號 S/YL-KTN/11 EXTRACT PLAN PREPARED ON 19.5.2026 BASED ON OUTLINE ZONING PLAN No. S/YL-KTN/11 APPROVED ON 5.12.2023

位置圖 LOCATION PLAN

擬議臨時貨倉（危險品倉庫除外）連附屬辦公室及相關的填土工程（為期3年）元朗錦田北丈量約份第109約地段第1348號（部分）及丈量約份第110約地段第76號餘段（部分）  
PROPOSED TEMPORARY WAREHOUSE (EXCLUDING DANGEROUS GOODS GODOWN) WITH ANCILLARY OFFICE AND ASSOCIATED FILLING OF LAND FOR A PERIOD OF 3 YEARS LOT 1348 (PART) IN D.D. 109 AND LOT 76 RP (PART) IN D.D. 110, KAM TIN NORTH, YUEN LONG

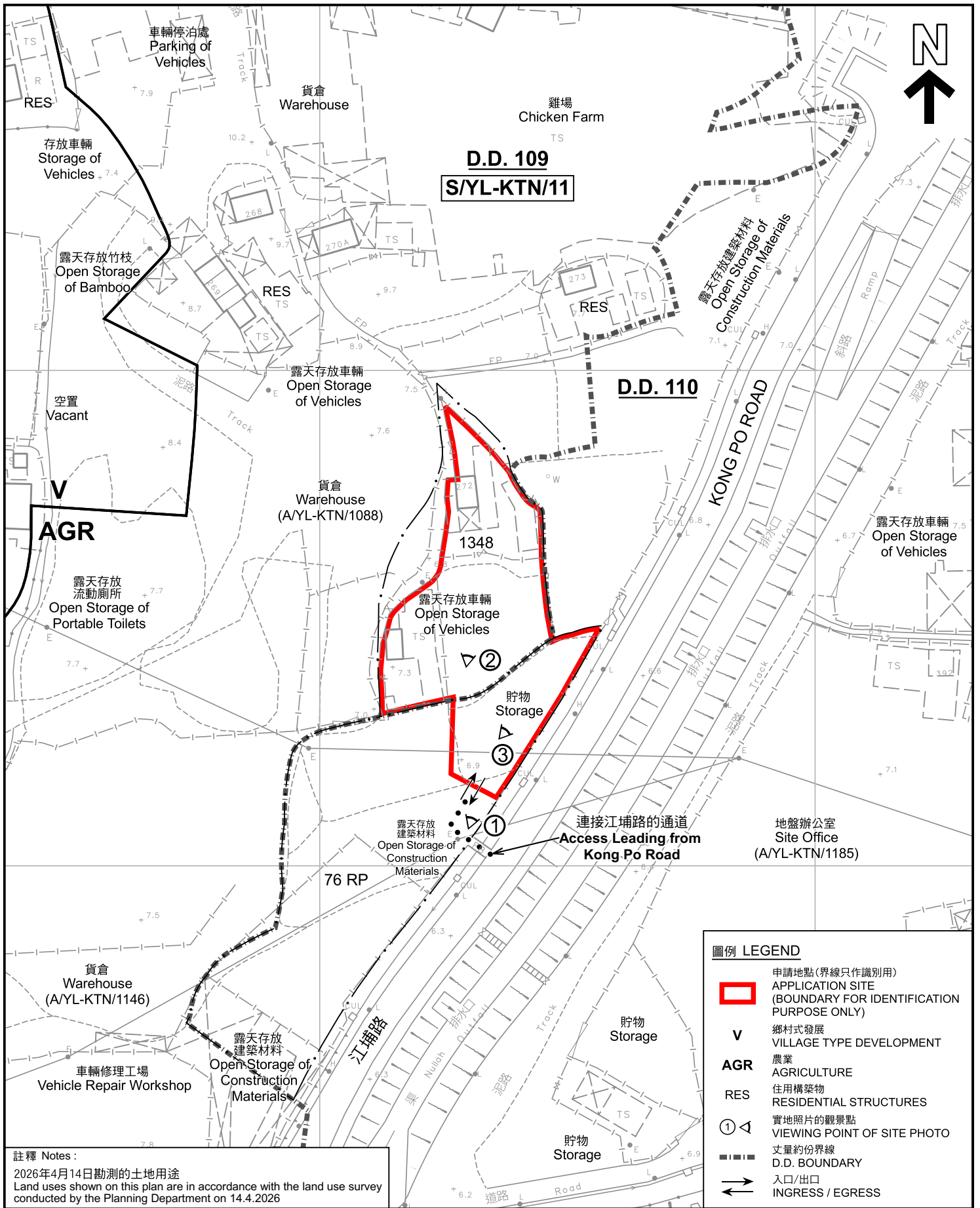
SCALE 1 : 7 500 比例尺

米 METRES 100 0 100 200 300 METRES

規劃署  
Planning Department

參考編號  
REFERENCE No.  
A/YL-KTN/1226

圖 PLAN  
A-1



註釋 Notes:  
 2026年4月14日勘測的土地用途  
 Land uses shown on this plan are in accordance with the land use survey conducted by the Planning Department on 14.4.2026

平面圖 SITE PLAN

擬議臨時貨倉(危險品倉庫除外)連附屬辦公室及相關的填土工程(為期3年)  
 元朗錦田北丈量約份第109約地段第1348號(部分)  
 及丈量約份第110約地段第76號餘段(部分)  
 PROPOSED TEMPORARY WAREHOUSE  
 (EXCLUDING DANGEROUS GOODS GODOWN) WITH ANCILLARY OFFICE  
 AND ASSOCIATED FILLING OF LAND FOR A PERIOD OF 3 YEARS  
 LOT 1348 (PART) IN D.D. 109 AND LOT 76 RP (PART)  
 IN D.D. 110, KAM TIN NORTH, YUEN LONG

本摘要圖於2026年5月19日擬備，  
 所根據的資料為測量圖編號  
 6-NE-8C  
 EXTRACT PLAN PREPARED ON 19.5.2026  
 BASED ON SURVEY SHEET No.  
 6-NE-8C

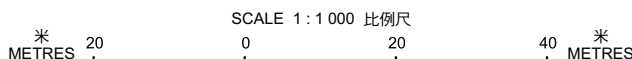
**圖例 LEGEND**

- 申請地點(界線只作識別用)  
APPLICATION SITE (BOUNDARY FOR IDENTIFICATION PURPOSE ONLY)
- V** 鄉村式發展  
VILLAGE TYPE DEVELOPMENT
- AGR** 農業  
AGRICULTURE
- RES** 住用構築物  
RESIDENTIAL STRUCTURES
- ① ◁ 實地照片的觀景點  
VIEWING POINT OF SITE PHOTO
- 丈量約份界線  
D.D. BOUNDARY
- ↔ 入口/出口  
INGRESS / EGRESS



參考編號  
 REFERENCE No.  
**A/YL-KTN/1226**

圖 PLAN  
**A-2**





圖例 LEGEND

- 申請地點 (界線只作識別用)  
APPLICATION SITE (BOUNDARY FOR IDENTIFICATION PURPOSE ONLY)
- 入口/出口  
INGRESS / EGRESS

本摘要圖於2026年5月14日擬備，  
所根據的資料為地政總署於2025年1月3日  
拍得的航攝照片編號 E246847C  
EXTRACT PLAN PREPARED ON 14.5.2026  
BASED ON AERIAL PHOTO No.  
E246847C TAKEN ON 3.1.2025  
BY LANDS DEPARTMENT

航攝照片 AERIAL PHOTO

擬議臨時貨倉(危險品倉庫除外)連附屬辦公室及相關的填土工程(為期3年)  
元朗錦田北丈量約份第109約地段第1348號(部分)  
及丈量約份第110約地段第76號餘段(部分)  
PROPOSED TEMPORARY WAREHOUSE  
(EXCLUDING DANGEROUS GOODS GODOWN) WITH ANCILLARY OFFICE  
AND ASSOCIATED FILLING OF LAND FOR A PERIOD OF 3 YEARS  
LOT 1348 (PART) IN D.D. 109 AND LOT 76 RP (PART)  
IN D.D. 110, KAM TIN NORTH, YUEN LONG



規劃署  
Planning Department

參考編號  
REFERENCE No.  
AYL-KTN/1226

圖 PLAN  
A-3



申請地點界線只作識別用 APPLICATION SITE BOUNDARY FOR IDENTIFICATION PURPOSE ONLY

**實地照片 SITE PHOTOS**

本圖於2026年5月14日擬備，所根據的資料為攝於2026年4月14日的實地照片  
 PLAN PREPARED ON 14.5.2026  
 BASED ON SITE PHOTOS  
 TAKEN ON 14.4.2026

擬議臨時貨倉(危險品倉庫除外)連附屬辦公室及相關的填土工程(為期3年)  
 元朗錦田北丈量約份第109約地段第1348號(部分)  
 及丈量約份第110約地段第76號餘段(部分)  
 PROPOSED TEMPORARY WAREHOUSE  
 (EXCLUDING DANGEROUS GOODS GODOWN) WITH ANCILLARY OFFICE  
 AND ASSOCIATED FILLING OF LAND FOR A PERIOD OF 3 YEARS  
 LOT 1348 (PART) IN D.D. 109 AND LOT 76 RP (PART)  
 IN D.D. 110, KAM TIN NORTH, YUEN LONG



**規劃署**  
 Planning Department

參考編號  
 REFERENCE No.  
 A/YL-KTN/1226

圖 PLAN  
 A-4