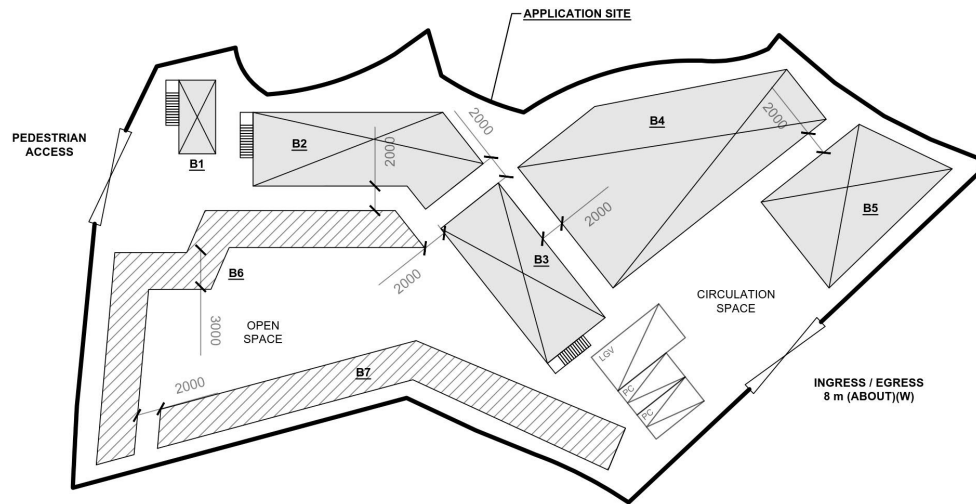
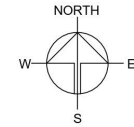


**DEVELOPMENT PARAMETERS**

APPLICATION SITE AREA	: 1,881 m <sup>2</sup>	(ABOUT)
COVERED AREA	: 789 m <sup>2</sup>	(ABOUT)
UNCOVERED AREA	: 1,092 m <sup>2</sup>	(ABOUT)
PLOT RATIO	: 0.58	(ABOUT)
SITE COVERAGE	: 42%	(ABOUT)
NO. OF STRUCTURE	: 7	(ABOUT)
DOMESTIC GFA	: NOT APPLICABLE	
NON-DOMESTIC GFA	: 1,095 m <sup>2</sup>	(ABOUT)
TOTAL GFA	: 1,095 m <sup>2</sup>	(ABOUT)
BUILDING HEIGHT	: 4 m - 7 m	(ABOUT)
NO. OF STOREY	: 1 - 2	

STRUCTURE	USE	COVERED AREA	GROSS FLOOR AREA	BUILDING HEIGHT
B1	CARETAKER OFFICE AND WASHROOM	19 m <sup>2</sup> (ABOUT) <sup>1</sup>	34 m <sup>2</sup> (ABOUT) <sup>1</sup>	7 m (ABOUT)(2-STOREY)
B2	SHOP AND SERVICES WITH OFFICE	111 m <sup>2</sup> (ABOUT) <sup>2</sup>	218 m <sup>2</sup> (ABOUT) <sup>2</sup>	7 m (ABOUT)(2-STOREY)
B3	SHOP AND SERVICES WITH OFFICE	88 m <sup>2</sup> (ABOUT) <sup>3</sup>	172 m <sup>2</sup> (ABOUT) <sup>3</sup>	7 m (ABOUT)(2-STOREY)
B4	SHOP AND SERVICES WITH STORAGE	225 m <sup>2</sup> (ABOUT)	225 m <sup>2</sup> (ABOUT)	7 m (ABOUT)(1-STOREY)
B5	SHOP AND SERVICES WITH STORAGE	100 m <sup>2</sup> (ABOUT)	200 m <sup>2</sup> (ABOUT)	7 m (ABOUT)(2-STOREY)
B6	SUNSHADE / RAIN SHELTER	121 m <sup>2</sup> (ABOUT)	121 m <sup>2</sup> (ABOUT)	4 m (ABOUT)(1-STOREY)
B7	SUNSHADE / RAIN SHELTER	125 m <sup>2</sup> (ABOUT)	125 m <sup>2</sup> (ABOUT)	4 m (ABOUT)(1-STOREY)
<b>TOTAL</b>		<b>789 m<sup>2</sup> (ABOUT)</b>	<b>1,095 m<sup>2</sup> (ABOUT)</b>	

<sup>1</sup> THE GFA OF STRUCTURES B1 - 15 m<sup>2</sup> (G/F) + 15 m<sup>2</sup> (1/F) + 4 m<sup>2</sup> (STAIRCASE) = 34 m<sup>2</sup> (ABOUT)  
<sup>2</sup> THE GFA OF STRUCTURES B2 - 107 m<sup>2</sup> (G/F) + 107 m<sup>2</sup> (1/F) + 4 m<sup>2</sup> (STAIRCASE) = 218 m<sup>2</sup> (ABOUT)  
<sup>3</sup> THE GFA OF STRUCTURES B3 - 84 m<sup>2</sup> (G/F) + 84 m<sup>2</sup> (1/F) + 4 m<sup>2</sup> (STAIRCASE) = 172 m<sup>2</sup> (ABOUT)



**PARKING AND LOADING / UNLOADING PROVISIONS**

NO. OF PARKING SPACE FOR PRIVATE CAR	: 2
DIMENSION OF PARKING SPACE	: 5 m (L) x 2.5 m (W)
NO. OF L/U/L SPACE FOR LIGHT GOODS VEHICLE	: 1
DIMENSION OF L/U/L SPACE	: 7 m (L) x 3.5 m (W)

\*SITE BOUNDARY FOR IDENTIFICATION PURPOSE ONLY

**LEGEND**

- APPLICATION SITE
- STRUCTURE (ENCLOSED)
- STRUCTURE (CANOPY)
- INGRESS / EGRESS
- PARKING SPACE (PC)
- LOADING / UNLOADING SPACE (LGV)

PLANNING CONSULTANT



PROJECT

PROPOSED TEMPORARY SHOP AND SERVICES WITH ANCILLARY FACILITIES FOR A PERIOD OF 3 YEARS

SITE LOCATION

LOT 2170 RP (PART) IN D.D. 129, LAU FAU SHAN, YUEN LONG, NEW TERRITORIES

SCALE



DRAWN BY	DATE
MN	11.3.2026
REVIEWED BY	DATE
APPROVED BY	DATE

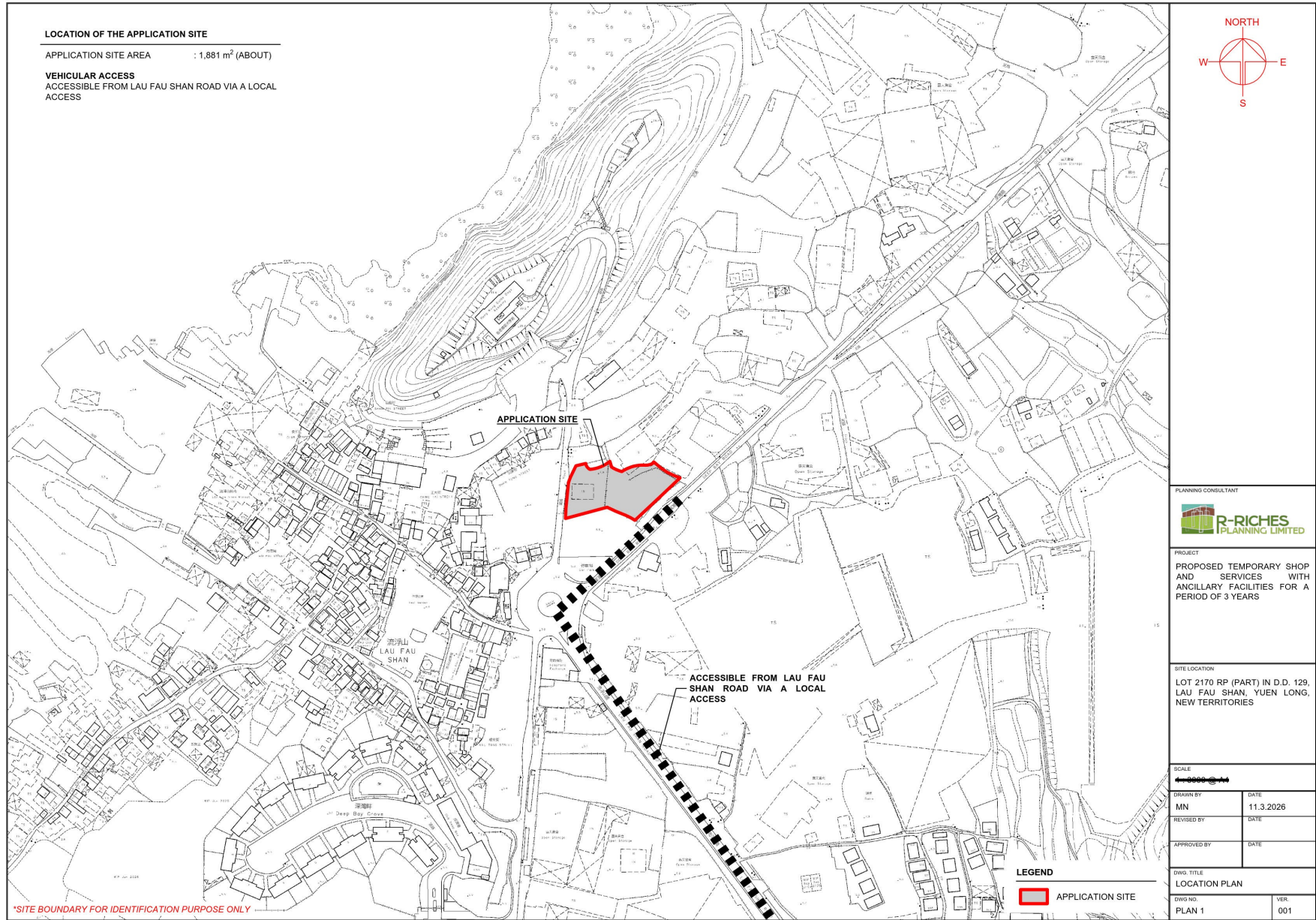
DWG. TITLE  
LAYOUT PLAN

DWG NO.	VER.
PLAN 4	001

參考編號  
REFERENCE No.  
A/YL-LFS/606

繪圖 DRAWING  
A-1

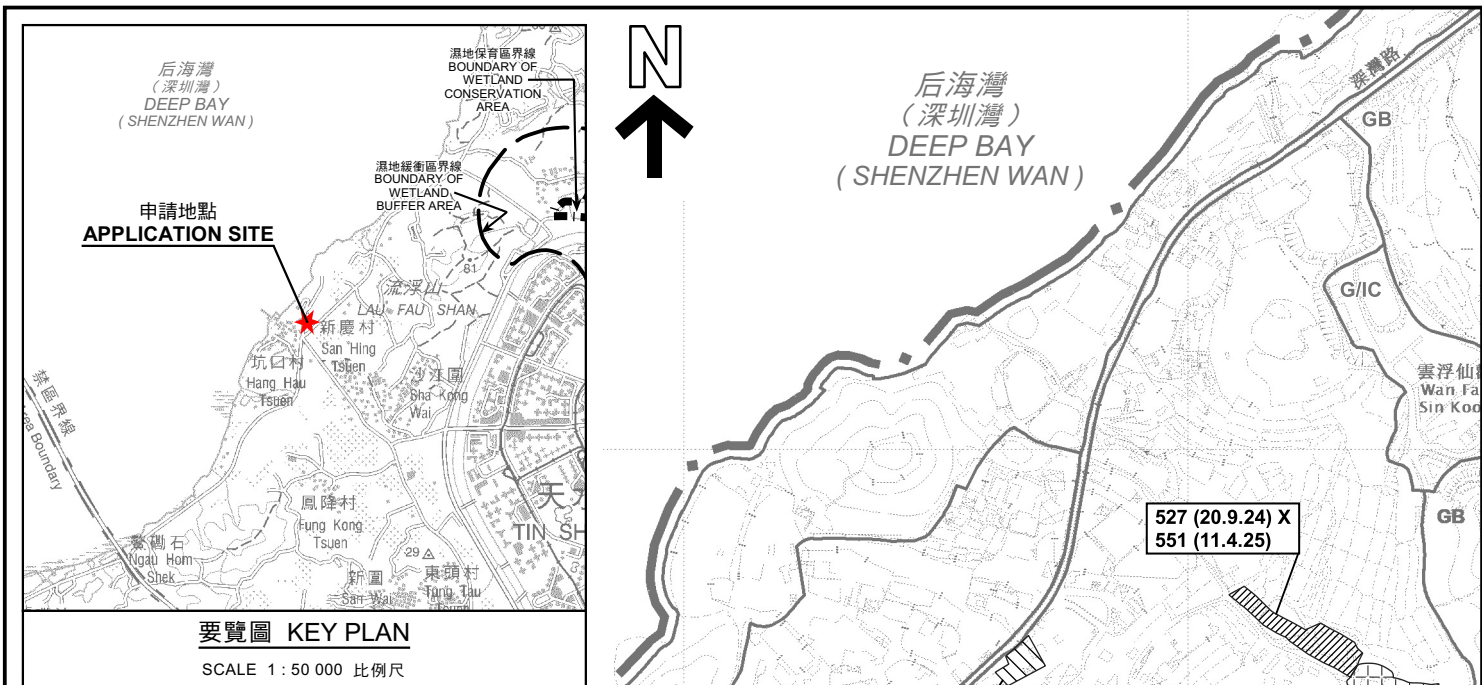
(摘錄自申請人於 23. 3. 2026 呈交的申請書)  
(Extract from Applicant's  
Submission of 23.3.2026)



參考編號  
REFERENCE No.  
A/YL-LFS/606

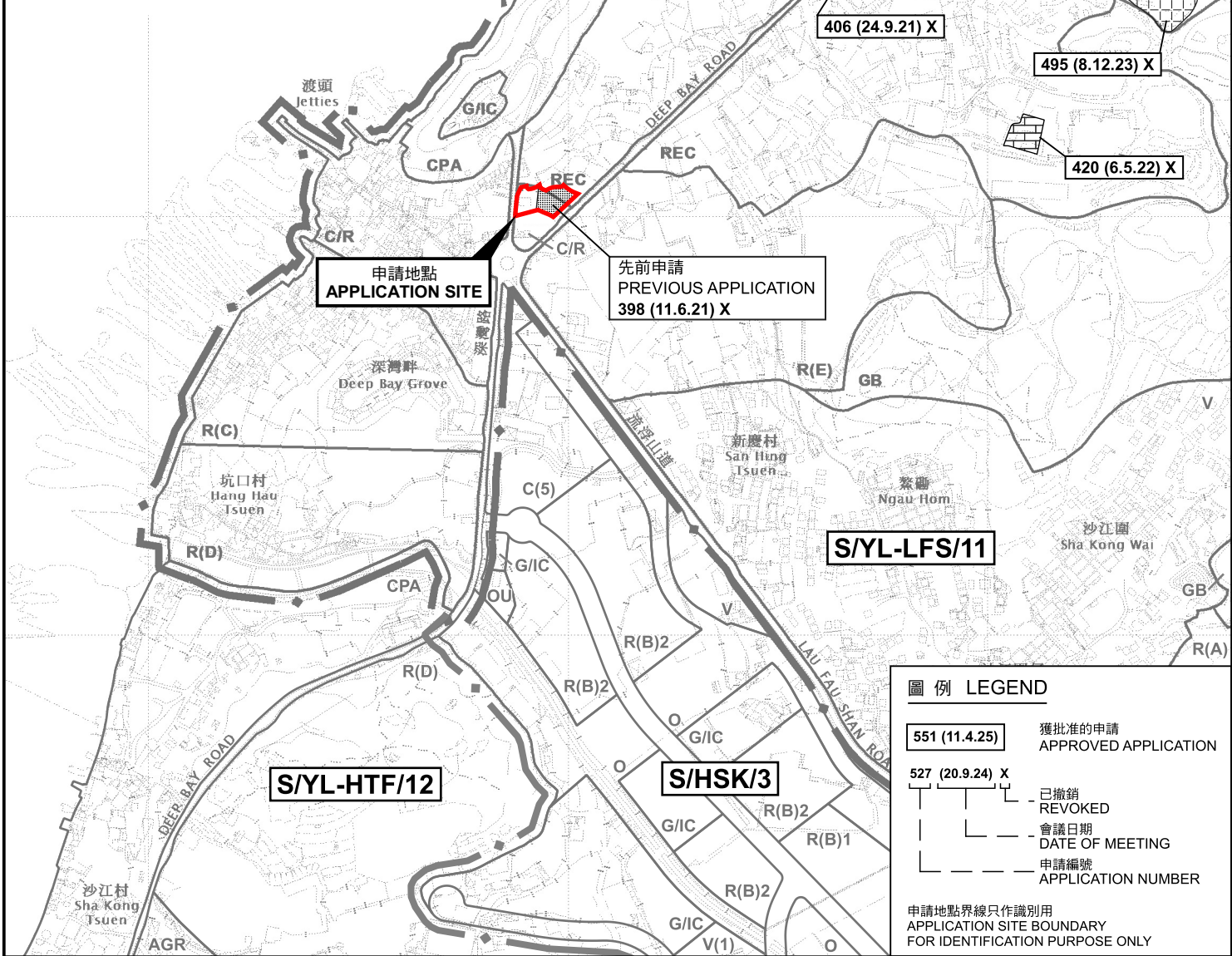
繪圖 DRAWING  
A-2

(摘錄自申請人於 23. 3. 2026 呈交的申請書)  
(Extract from Applicant's  
Submission of 23.3.2026)



要覽圖 KEY PLAN

SCALE 1 : 50 000 比例尺



圖例 LEGEND

- 551 (11.4.25) 獲批准的申請  
APPROVED APPLICATION
- 527 (20.9.24) X 已撤銷  
REVOKED
- 527 (20.9.24) X 會議日期  
DATE OF MEETING
- 527 (20.9.24) X 申請編號  
APPLICATION NUMBER

申請地點界線只作識別用  
APPLICATION SITE BOUNDARY  
FOR IDENTIFICATION PURPOSE ONLY

位置圖 LOCATION PLAN

本摘要圖於2026年4月28日擬備，  
所根據的資料為於2022年4月12日  
核准的分區計劃大綱圖編號 S/YL-LFS/11  
EXTRACT PLAN PREPARED ON 28.4.2026  
BASED ON OUTLINE ZONING PLAN No.  
S/YL-LFS/11 APPROVED ON 12.4.2022

擬議臨時商店及服務行業連附屬設施(為期3年)  
元朗流浮山丈量約份第129約地段第2170號餘段(部分)  
PROPOSED TEMPORARY SHOP AND SERVICES  
WITH ANCILLARY FACILITIES FOR A PERIOD OF 3 YEARS  
LOT 2170 RP (PART) IN D.D. 129, LAU FAU SHAN, YUEN LONG

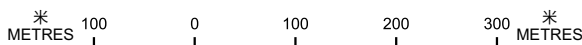


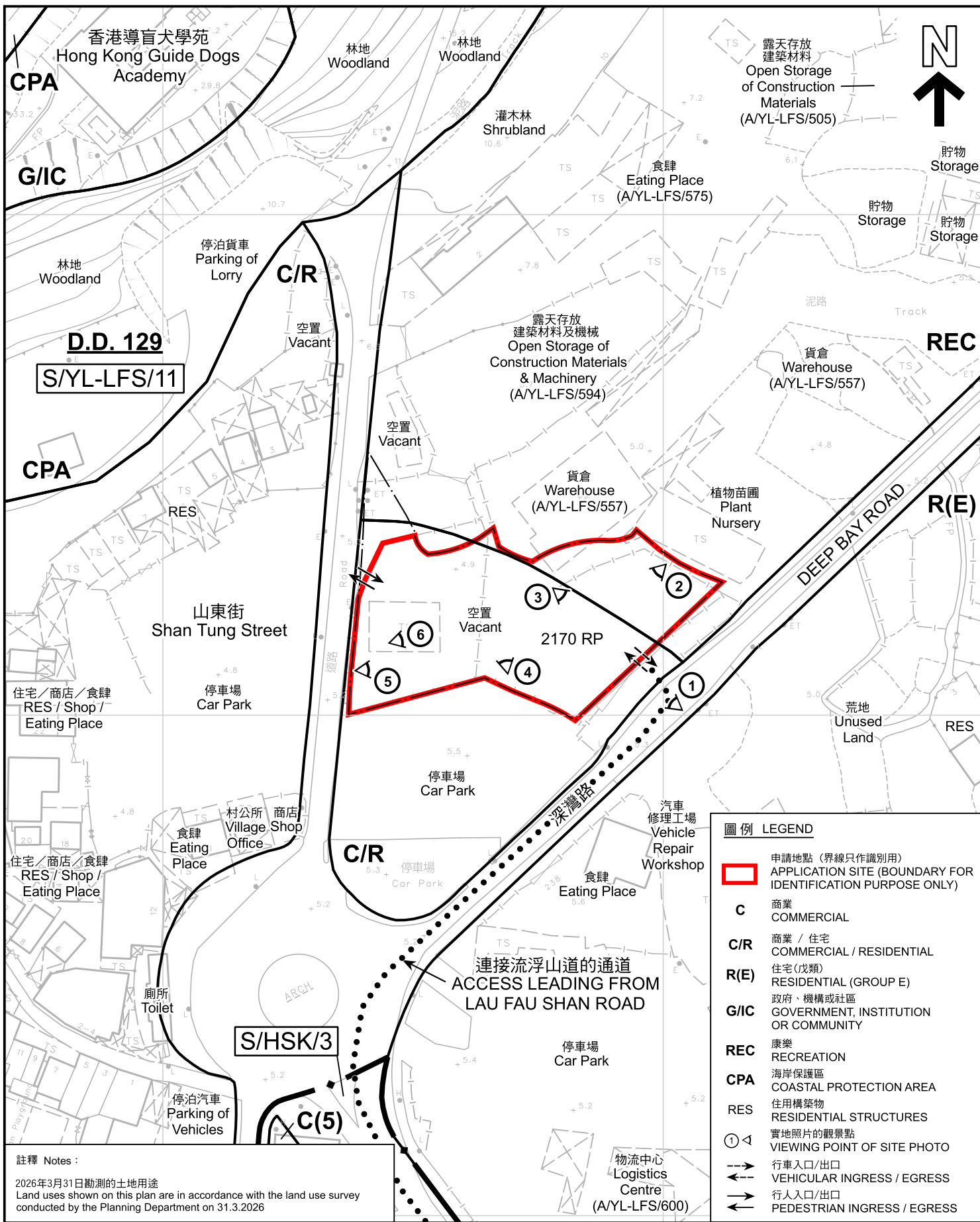
規劃署  
Planning Department

參考編號  
REFERENCE No.  
A/YL-LFS/606

圖 PLAN  
A-1

SCALE 1 : 7 500 比例尺





**註釋 Notes :**

2026年3月31日勘測的土地用途  
Land uses shown on this plan are in accordance with the land use survey conducted by the Planning Department on 31.3.2026

**平面圖 SITE PLAN**

本摘要圖於2026年4月23日擬備，所根據的資料為測量圖編號 2-SW-21B及D 和 2-SW-22A及C  
EXTRACT PLAN PREPARED ON 23.4.2026 BASED ON SURVEY SHEETS No. 2-SW-21B&D and 2-SW-22A&C

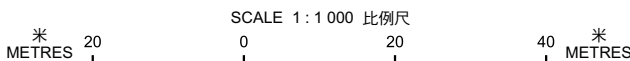
擬議臨時商店及服務行業連附屬設施(為期3年)  
元朗流浮山丈量約份第129約地段第2170號餘段(部分)  
PROPOSED TEMPORARY SHOP AND SERVICES WITH ANCILLARY FACILITIES FOR A PERIOD OF 3 YEARS  
LOT 2170 RP (PART) IN D.D. 129, LAU FAU SHAN, YUEN LONG



**規劃署**  
Planning Department


參考編號  
REFERENCE No.  
**A/YL-LFS/606**

圖 PLAN  
**A-2**





圖例 LEGEND

 申請地點(界線只作識別用)  
APPLICATION SITE  
(BOUNDARY FOR IDENTIFICATION  
PURPOSE ONLY)

本摘要圖於2026年4月23日擬備，所根據的資料為地政總署於2025年1月11日拍得的航攝照片編號 E250302C  
EXTRACT PLAN PREPARED ON 23.4.2026  
BASED ON AERIAL PHOTO No.  
E250302C TAKEN ON 11.1.2025  
BY LANDS DEPARTMENT

航攝照片 AERIAL PHOTO

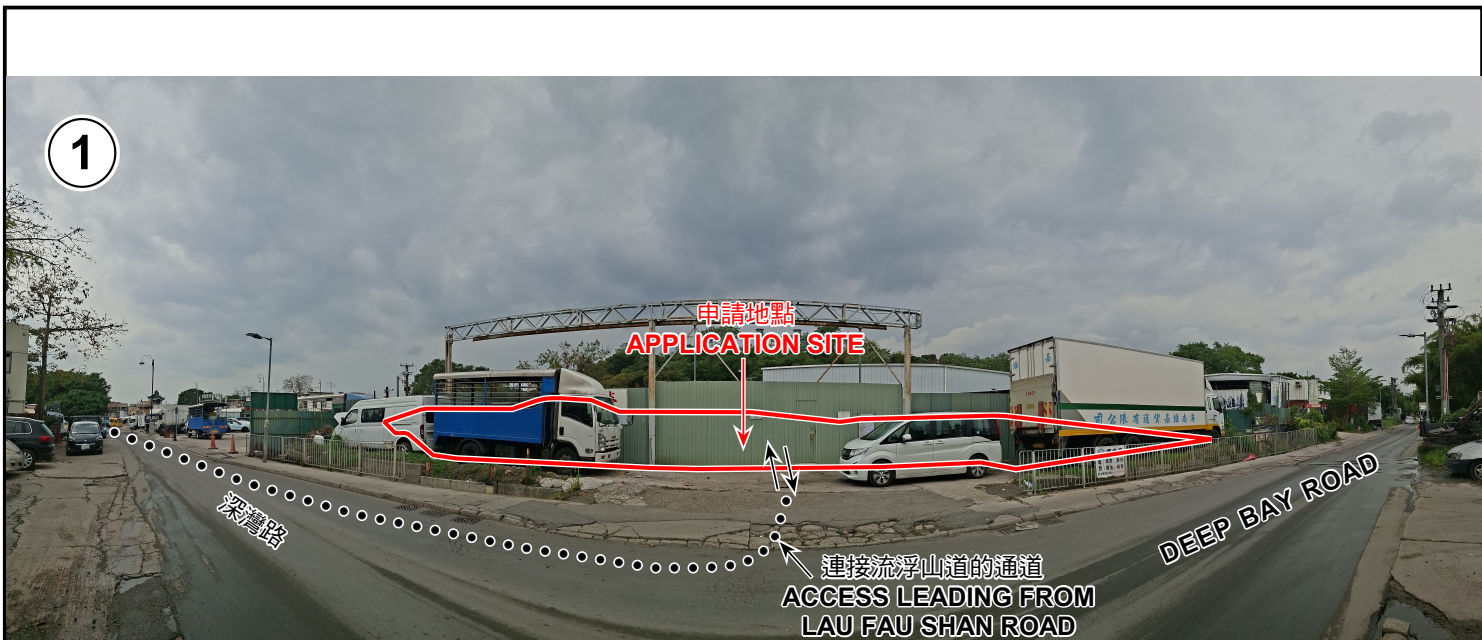
擬議臨時商店及服務行業連附屬設施(為期3年)  
元朗流浮山丈量約份第129約地段第2170號餘段(部分)  
PROPOSED TEMPORARY SHOP AND SERVICES  
WITH ANCILLARY FACILITIES FOR A PERIOD OF 3 YEARS  
LOT 2170 RP (PART) IN D.D. 129, LAU FAU SHAN, YUEN LONG



規劃署  
Planning Department

參考編號  
REFERENCE No.  
A/YL-LFS/606

圖 PLAN  
A-3



申請地點界線只作識別用 APPLICATION SITE BOUNDARY FOR IDENTIFICATION PURPOSE ONLY

### 實地照片 SITE PHOTOS

本圖於2026年4月28日擬備，所根據的資料為攝於2026年3月31日的實地照片  
 PLAN PREPARED ON 28.4.2026  
 BASED ON SITE PHOTOS  
 TAKEN ON 31.3.2026

擬議臨時商店及服務行業連附屬設施(為期3年)  
 元朗流浮山丈量約份第129約地段第2170號餘段(部分)  
 PROPOSED TEMPORARY SHOP AND SERVICES  
 WITH ANCILLARY FACILITIES FOR A PERIOD OF 3 YEARS  
 LOT 2170 RP (PART) IN D.D. 129, LAU FAU SHAN, YUEN LONG



規劃署  
 Planning Department

參考編號  
 REFERENCE No.  
 A/YL-LFS/606

圖 PLAN  
 A-4a



4

申請地點  
APPLICATION SITE



5

申請地點  
APPLICATION SITE



6

申請地點  
APPLICATION SITE

實地照片 SITE PHOTOS

本圖於2026年4月23日擬備，所根據的資料為攝於2026年3月31日的實地照片  
PLAN PREPARED ON 23.4.2026  
BASED ON SITE PHOTOS  
TAKEN ON 31.3.2026

擬議臨時商店及服務行業連附屬設施(為期3年)  
元朗流浮山丈量約份第129約地段第2170號餘段(部分)  
PROPOSED TEMPORARY SHOP AND SERVICES  
WITH ANCILLARY FACILITIES FOR A PERIOD OF 3 YEARS  
LOT 2170 RP (PART) IN D.D. 129, LAU FAU SHAN, YUEN LONG



規劃署  
Planning Department

參考編號  
REFERENCE No.  
A/YL-LFS/606

圖 PLAN  
A-4b