

Extracted from Draft Ping Shan Outline Zoning Plan No. S/YL-PS/21




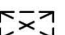
Not to scale	Location Plan	Goldrich Planners & Surveyors Ltd.
February 2026	Lots 62 S.A(part), 62 S.B ss1 RP(part), 62 S.B ss2 RP(part), 62 S.C RP(part), 62 S.D RP(part), 62 S.E ss2(part), 62 S.H RP(part), 63(part), 72(part), 73(part) and 74(part) in DD 126	Plan 1 (P 26005)

(摘錄自申請人於 25.3.2026 提交的申請書)
(Extract from Applicant's Submission of 25.3.2026)

參考編號 REFERENCE No. A/YL-PS/777	繪圖 DRAWING A-1
---	--------------------------



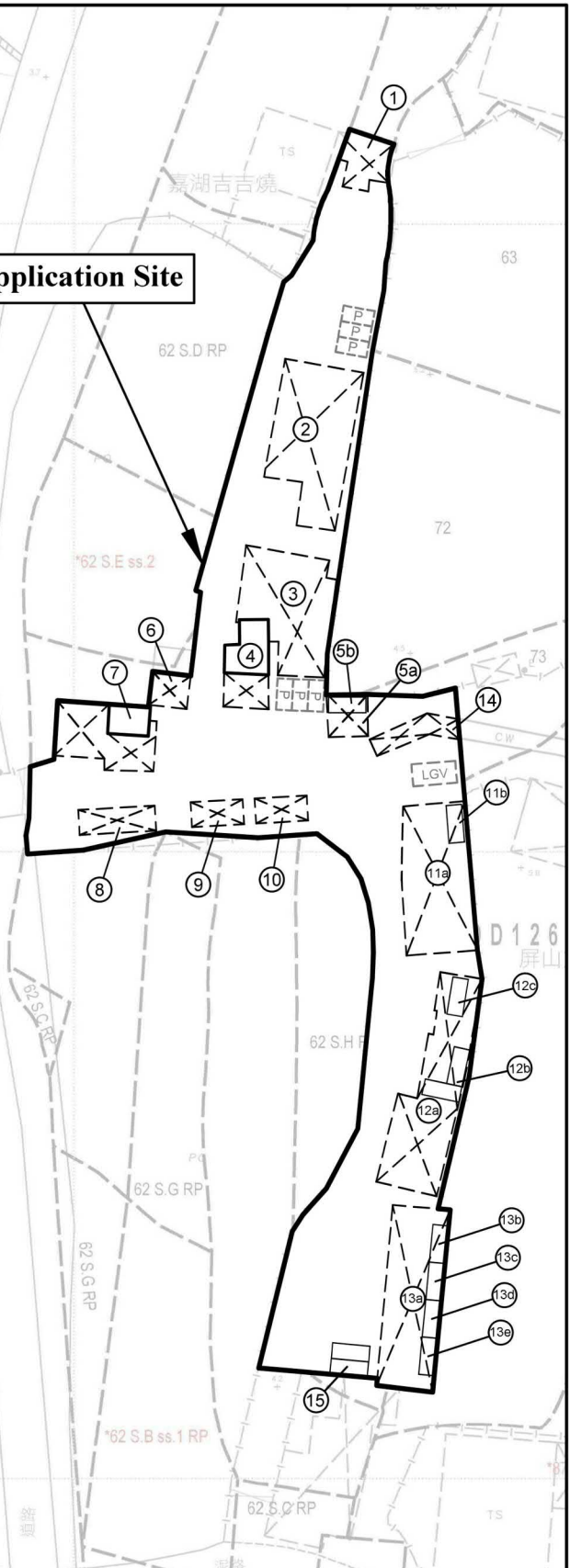
Legend

-  Vehicular Ingress / Egress
-  Parking space for private cars (5m (L) x 2.5m (W))
-  Parking space for light goods vehicle (7m (L) x 3.5m (W))
-  Open Shed

Site Area(about): 4,849m²

No.	Uses	Floor Area (about)	Covered Area (about)	Storeys	Height
1	Car showroom	58 m ²	58 m ²	1	5m
2	Car showroom	284 m ²	284 m ²	1	5m
3	Car showroom	231 m ²	231 m ²	1	5m
4	Ancillary Office with Canopy	90 m ²	90 m ²	1	5m
5	5a Car showroom	28 m ²	43 m ²	1	5m
	5b Storeroom	15 m ²	(under 5a)	1	5m
6	Car showroom	33 m ²	33 m ²	1	5m
7	Guard room with Canopy	150 m ²	150 m ²	1	5m
8	Car showroom	49 m ²	49 m ²	1	5m
9	Car showroom	33 m ²	33 m ²	1	5m
10	Car showroom	33 m ²	33 m ²	1	5m
11	11a Car showroom	244 m ²	259 m ²	1	5m
	11b Ancillary Office	15 m ²	(under 11a)	1	5m
12	12a Car showroom	236 m ²	281 m ²	1	5m
	12b Ancillary Office	30 m ²	(under 12a)	1	5m
	12c Toilet	15 m ²	(under 12a)	1	5m
13	13a Car showroom	204 m ²	264 m ²	1	5m
	13b Meeting Room	15 m ²	(under 13a)	1	5m
	13c Meeting Room	15 m ²	(under 13a)	1	5m
	13d Meeting Room	15 m ²	(under 13a)	1	5m
	13e Storeroom	15 m ²	(under 13a)	1	5m
14	Open Shed	45 m ²	45 m ²	1	5m
15	Storeroom	30 m ²	30 m ²	1	5m
Total		1,883 m ²	1,883 m ²		

Application Site



—1:1000—

Layout Plan

Goldrich Planners & Surveyors Ltd.

February 2026

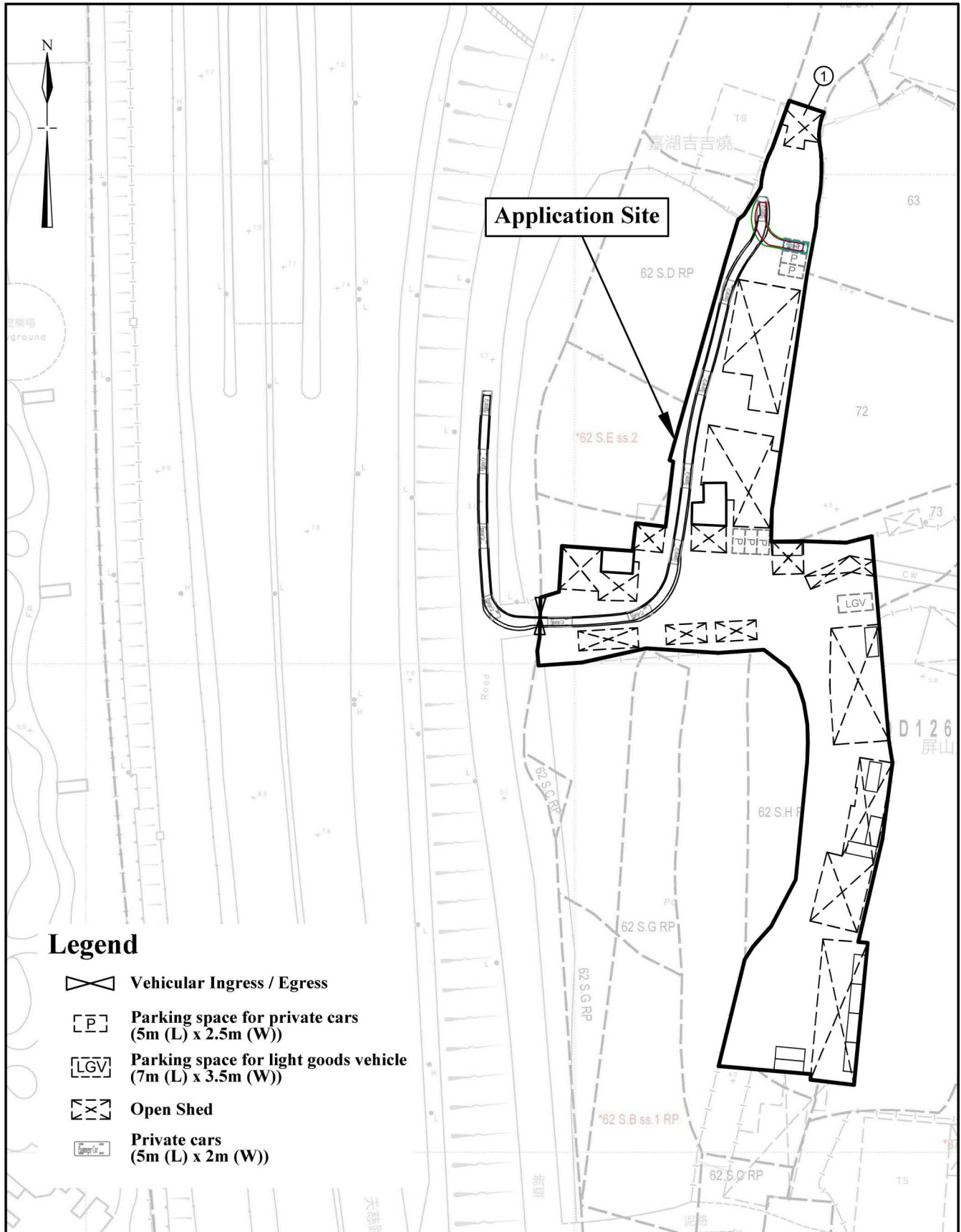
Lots 62 S.A(part), 62 S.B ss1 RP(part), 62 S.B ss2 RP(part), 62 S.C RP(part), 62 S.D RP(part), 62 S.E ss2(part), 62 S.H RP(part), 63(part), 72(part), 73(part) and 74(part) in DD 126

**Plan 3
(P 26005)**






(摘錄自申請人於 25. 3. 2026 提交的申請書)
**(Extract from Applicant's
Submission of 25.3.2026)**

參考編號
REFERENCE No.
A/YL-PS/777

繪圖 DRAWING
A-2



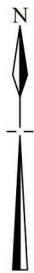
Legend

-  Vehicular Ingress / Egress
-  Parking space for private cars
(5m (L) x 2.5m (W))
-  Parking space for light goods vehicle
(7m (L) x 3.5m (W))
-  Open Shed
-  Private cars
(5m (L) x 2m (W))

1:1000	Swept Path Analysis	Goldrich Planners & Surveyors Ltd.
March 2026	Lots 62 S.A(part), 62 S.B ss1 RP(part), 62 S.B ss2 RP(part), 62 S.C RP(part), 62 S.D RP(part), 62 S.E ss2(part), 62 S.H RP(part), 63(part), 72(part), 73(part) and 74(part) in DD 126	Plan 4 (P 26005)

(摘錄自申請人於 25. 3. 2026 提交的申請書)
 (Extract from Applicant's
 Submission of 25.3.2026)

參考編號 REFERENCE No. A/YL-PS/777	繪圖 DRAWING A-3
---	--------------------------



Application Site

This area of the site has been paved with concrete at a depth of about 0.2m (from 4.1 mPD to 4.3 mPD) to provide waterproof surface for erection of structure and vehicle manoeuvring

180m²
(about)

548m²
(about)

There are 2 platforms within the site. They have been paved with concrete at a depth of about 1.1m (from 4.1 mPD to 5.2 mPD)

-1:1000-

Plan Showing Filling of Land

Goldrich Planners & Surveyors Ltd.

March 2026

Lots 62 S.A(part), 62 S.B ss1 RP(part), 62 S.B ss2 RP(part), 62 S.C RP(part), 62 S.D RP(part), 62 S.E ss2(part), 62 S.H RP(part), 63(part), 72(part), 73(part) and 74(part) in DD 126

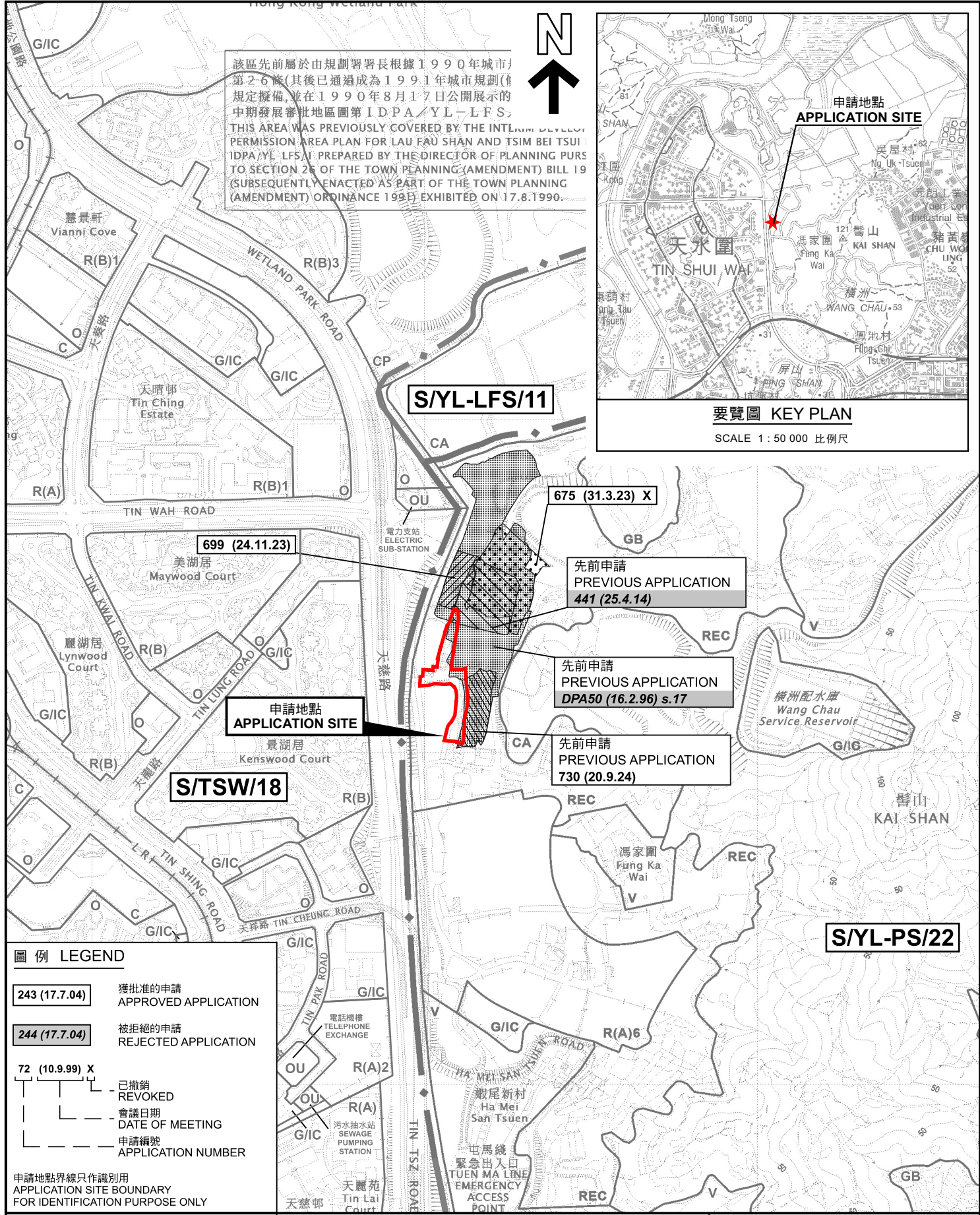
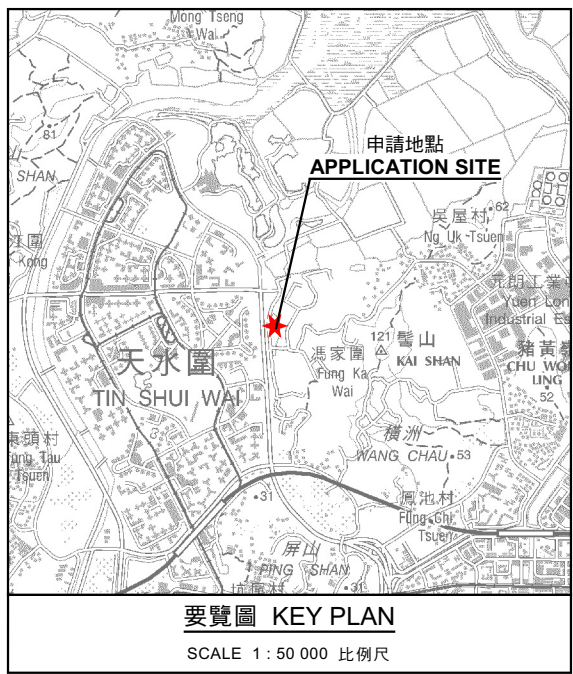
Plan 5
(P 26005)

(摘錄自申請人於 12. 5. 2026 呈交的進一步資料)
(Extract from Applicant's Further
Information Submitted on 12.5.2026)

參考編號
REFERENCE No.
A/YL-PS/777

繪圖 DRAWING
A-4

該區先前屬於由規劃署署長根據1990年城市規劃第2-6條(其後已通過成為1991年城市規劃(作規定擬備,並在1990年8月17日公開展示的中期發展審批地區圖第1DPA/YL-LFS)。THIS AREA WAS PREVIOUSLY COVERED BY THE INTERIM DEVELOPMENT PERMISSION AREA PLAN FOR LAU FAU SHAN AND TSIM BEI TSUI (DPA/YL-LFS), PREPARED BY THE DIRECTOR OF PLANNING PURSUANT TO SECTION 25 OF THE TOWN PLANNING (AMENDMENT) BILL 19 (SUBSEQUENTLY ENACTED AS PART OF THE TOWN PLANNING (AMENDMENT) ORDINANCE 1995) EXHIBITED ON 17.8.1990.



圖例 LEGEND

243 (17.7.04)	獲批准的申請 APPROVED APPLICATION
244 (17.7.04)	被拒絕的申請 REJECTED APPLICATION
72 (10.9.99) X	已撤銷 REVOKED
---	會議日期 DATE OF MEETING
---	申請編號 APPLICATION NUMBER

申請地點界線只作識別用
APPLICATION SITE BOUNDARY
FOR IDENTIFICATION PURPOSE ONLY

位置圖 LOCATION PLAN

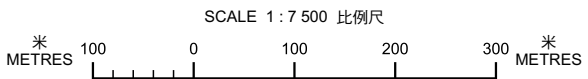
擬議臨時商店及服務行業(汽車陳列室)和相關填土工程(為期5年)
元朗屏山丈量約份第126約多個地段
PROPOSED TEMPORARY SHOP AND SERVICES
(MOTOR-VEHICLE SHOWROOM) AND ASSOCIATED FILLING OF LAND
FOR A PERIOD OF 5 YEARS
VARIOUS LOTS IN D.D.126, PING SHAN, YUEN LONG

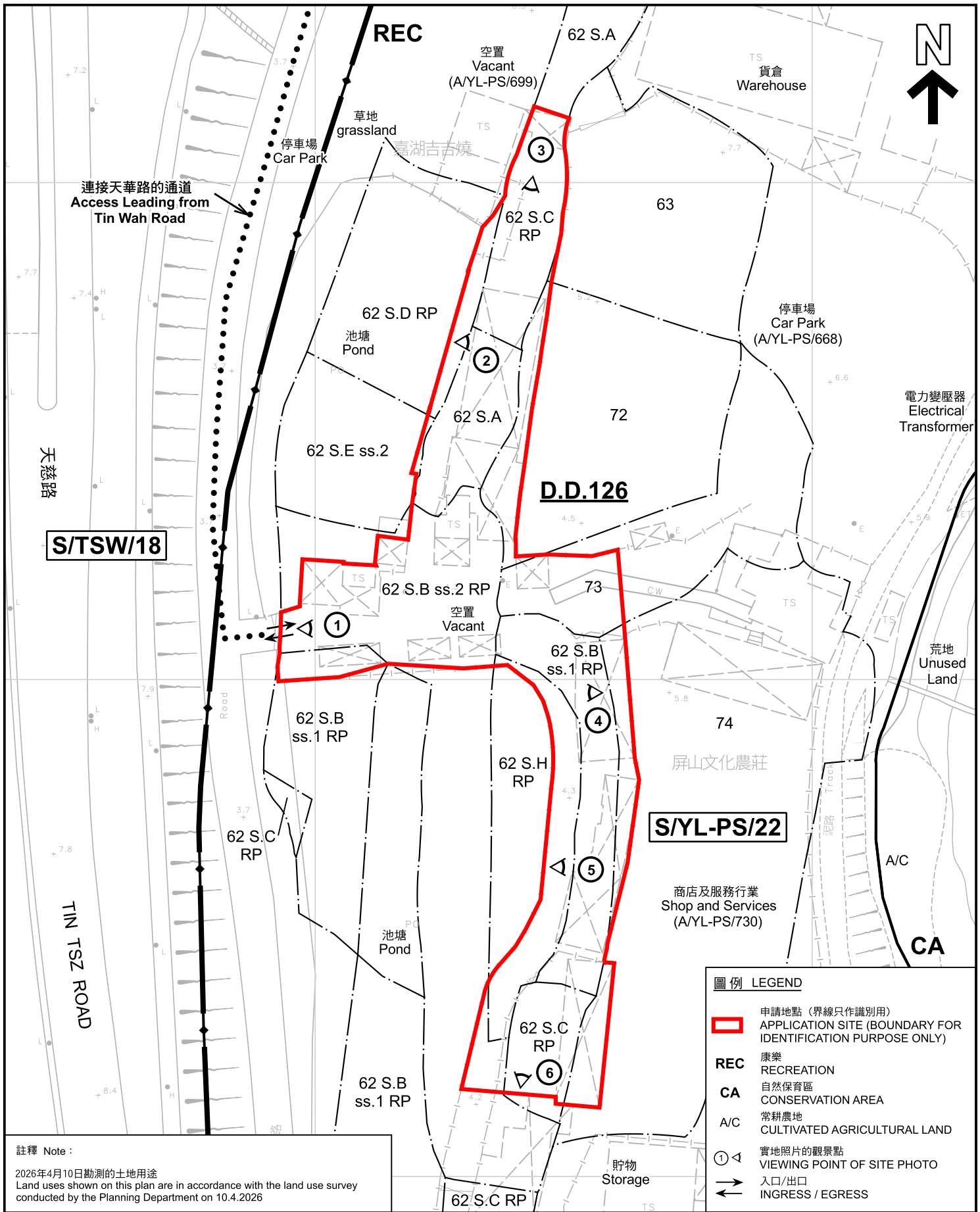


本摘要圖於2026年5月22日擬備，
所根據的資料為於2026年5月12日
核准的分區計劃大綱圖編號 S/YL-PS/22
EXTRACT PLAN PREPARED ON 22.5.2026
BASED ON OUTLINE ZONING PLAN No.
S/YL-PS/22 APPROVED ON 12.5.2026

參考編號
REFERENCE No.
A/YL-PS/777

圖 PLAN
A-1





S/TSW/18

S/YL-PS/22

D.D.126

圖例 LEGEND	
	申請地點 (界線只作識別用) APPLICATION SITE (BOUNDARY FOR IDENTIFICATION PURPOSE ONLY)
REC	康樂 RECREATION
CA	自然保育區 CONSERVATION AREA
A/C	常耕農地 CULTIVATED AGRICULTURAL LAND
	實地照片的觀景點 VIEWING POINT OF SITE PHOTO
	入口/出口 INGRESS / EGRESS

註釋 Note :
2026年4月10日勘測的土地用途
Land uses shown on this plan are in accordance with the land use survey conducted by the Planning Department on 10.4.2026

本摘要圖於2026年5月22日擬備，所根據的資料為測量圖編號 6-NW-3B
EXTRACT PLAN PREPARED ON 22.5.2026 BASED ON SURVEY SHEET No. 6-NW-3B

平面圖 SITE PLAN

擬議臨時商店及服務行業(汽車陳列室)和相關填土工程(為期5年)
元朗屏山丈量約份第126約多個地段
PROPOSED TEMPORARY SHOP AND SERVICES (MOTOR-VEHICLE SHOWROOM) AND ASSOCIATED FILLING OF LAND FOR A PERIOD OF 5 YEARS
VARIOUS LOTS IN D.D.126, PING SHAN, YUEN LONG

SCALE 1:1 000 比例尺

規劃署
 Planning Department

參考編號 REFERENCE No. A/YL-PS/777	圖 PLAN A-2
---	----------------------



連接天華路的通道
Access Leading from
Tin Wah Road

景湖居
Kenswood
Court

天慈路

TIN Tsz ROAD

天柏路公園
Tin Pak Road
Park

天祥路
TIN CHEUNG ROAD

圖例 LEGEND

 申請地點 (界線只作識別用)
APPLICATION SITE
(BOUNDARY FOR IDENTIFICATION
PURPOSE ONLY)

本摘要圖於2026年4月16日擬備，所根據的資料為地政總署於2024年10月24日拍得的航攝照片編號 E236636C
EXTRACT PLAN PREPARED ON 16.4.2026
BASED ON AERIAL PHOTO No.
E236636C TAKEN ON 24.10.2024
BY LANDS DEPARTMENT

航攝照片 AERIAL PHOTO

擬議臨時商店及服務行業 (汽車陳列室) 和相關填土工程 (為期5年)
元朗屏山丈量約份第126約多個地段
PROPOSED TEMPORARY SHOP AND SERVICES
(MOTOR-VEHICLE SHOWROOM) AND ASSOCIATED FILLING OF LAND
FOR A PERIOD OF 5 YEARS
VARIOUS LOTS IN D.D.126, PING SHAN, YUEN LONG



規劃署
Planning Department

參考編號
REFERENCE No.
A/YL-PS/777

圖 PLAN
A-3



1

申請地點
APPLICATION SITE



2

申請地點
APPLICATION SITE



3

申請地點
APPLICATION SITE

實地照片 SITE PHOTOS

擬議臨時商店及服務行業(汽車陳列室)和相關填土工程(為期5年)
元朗屏山丈量約份第126約多個地段
PROPOSED TEMPORARY SHOP AND SERVICES
(MOTOR-VEHICLE SHOWROOM) AND ASSOCIATED FILLING OF LAND
FOR A PERIOD OF 5 YEARS
VARIOUS LOTS IN D.D.126, PING SHAN, YUEN LONG



規劃署
Planning Department

參考編號
REFERENCE No.
A/YL-PS/777

圖 PLAN
A-4a

本圖於2026年4月16日擬備，所根據的資料為攝於2026年4月10日的實地照片
PLAN PREPARED ON 16.4.2026
BASED ON SITE PHOTOS
TAKEN ON 10.4.2026



申請地點
APPLICATION SITE



申請地點
APPLICATION SITE



申請地點
APPLICATION SITE

實地照片 SITE PHOTOS

擬議臨時商店及服務行業(汽車陳列室)和相關填土工程(為期5年)
元朗屏山丈量約份第126約多個地段
PROPOSED TEMPORARY SHOP AND SERVICES
(MOTOR-VEHICLE SHOWROOM) AND ASSOCIATED FILLING OF LAND
FOR A PERIOD OF 5 YEARS
VARIOUS LOTS IN D.D.126, PING SHAN, YUEN LONG



規劃署
Planning Department

參考編號
REFERENCE No.
A/YL-PS/777

圖 PLAN
A-4b

本圖於2026年4月16日擬備，所根據的資料為攝於2026年4月10日的實地照片
PLAN PREPARED ON 16.4.2026
BASED ON SITE PHOTOS
TAKEN ON 10.4.2026