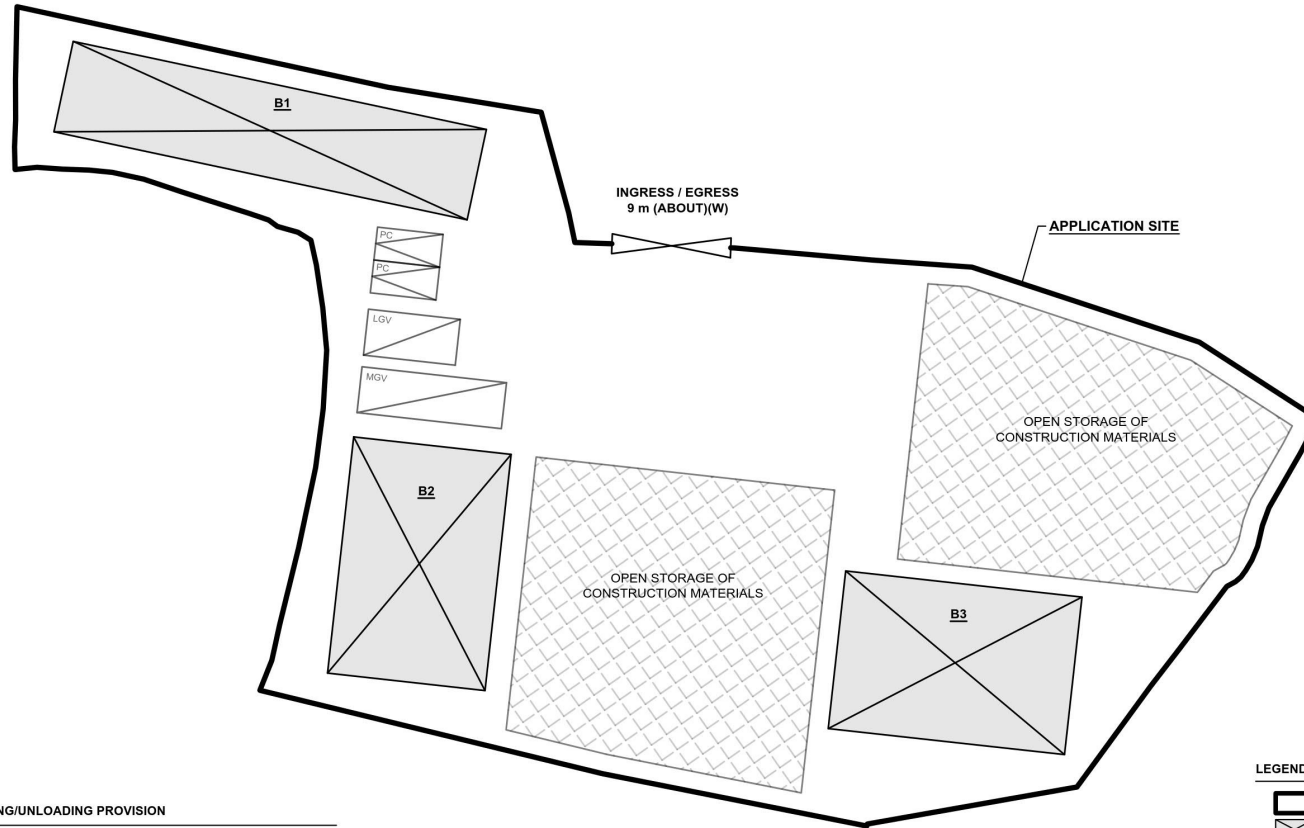
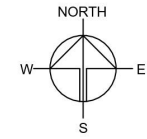


DEVELOPMENT PARAMETERS

APPLICATION SITE AREA	: 3,158 m ²	(ABOUT)
COVERED AREA	: 656 m ²	(ABOUT)
UNCOVERED AREA	: 2,502 m ²	(ABOUT)
PLOT RATIO	: 0.21	(ABOUT)
SITE COVERAGE	: 21 %	(ABOUT)
NO. OF STRUCTURE	: 3	
DOMESTIC GFA	: NOT APPLICABLE	
NON-DOMESTIC GFA	: 656 m ²	(ABOUT)
TOTAL GFA	: 656 m ²	(ABOUT)
BUILDING HEIGHT	: 6 m	(ABOUT)
NO. OF STOREY	: 1	
AREA FOR OPEN STORAGE OF CONSTRUCTION MATERIALS	: 991 m ²	(ABOUT)

STRUCTURE	USE	COVERED AREA	GFA	BUILDING HEIGHT
B1	WAREHOUSE (EXCLUDING D.G.G.) SITE OFFICE, WASHROOM	224 m ² (ABOUT)	224 m ² (ABOUT)	6 m (ABOUT)(1-STOREY)
B2	WAREHOUSE (EXCLUDING D.G.G.)	216 m ² (ABOUT)	216 m ² (ABOUT)	6 m (ABOUT)(1-STOREY)
B3	WAREHOUSE (EXCLUDING D.G.G.)	216 m ² (ABOUT)	216 m ² (ABOUT)	6 m (ABOUT)(1-STOREY)
TOTAL		656 m² (ABOUT)	656 m² (ABOUT)	



PARKING AND LOADING/UNLOADING PROVISION

NO. OF PRIVATE CAR PARKING SPACE	: 2
DIMENSION OF PARKING SPACE	: 5 m (L) X 2.5 m (W)
NO. L/U/L SPACE FOR LIGHT GOODS VEHICLE	: 1
DIMENSION OF LOADING/UNLOADING SPACE	: 7 m (L) X 3.5 m (W)
NO. L/U/L SPACE FOR MEDIUM GOODS VEHICLE	: 1
DIMENSION OF LOADING/UNLOADING SPACE	: 11 m (L) X 3.5 m (W)

LEGEND

- APPLICATION SITE
- STRUCTURE
- OPEN STORAGE AREA
- PARKING SPACE (PC)
- L/U/L SPACE (LGV)
- L/U/L SPACE (MGV)
- INGRESS / EGRESS

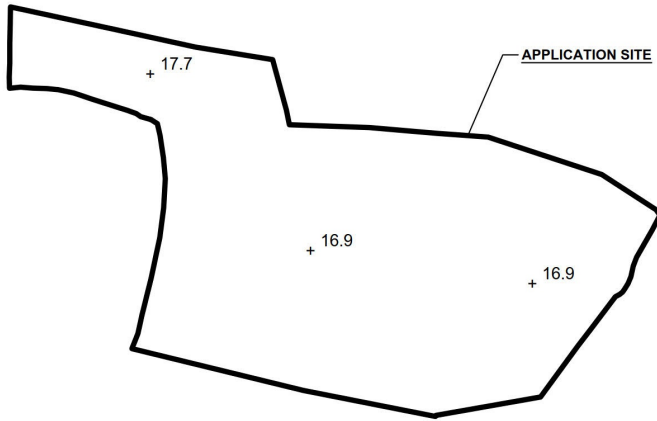
PLANNING CONSULTANT	
PROJECT	
TEMPORARY WAREHOUSE AND OPEN STORAGE OF CONSTRUCTION MATERIALS WITH ANCILLARY FACILITIES AND ASSOCIATED FILLING OF LAND FOR A PERIOD OF 3 YEARS	
SITE LOCATION	
VARIOUS LOTS IN D.D. 107, FUNG KAT HEUNG, KAM TIN, YUEN LONG, NEW TERRITORIES	
SCALE	
1:600 @ A4	
DRAWN BY	DATE
MN	5.7.2024
CHECKED BY	DATE
APPROVED BY	DATE
DWG. TITLE	
LAYOUT PLAN	
DWG NO.	VER.
PLAN 5	001

(摘錄自申請人於 17.4.2026 呈交的申請書)
(Extract from Applicant's Submission of 17.4.2026)

參考編號 REFERENCE No. A/YL-KTN/1231	繪圖 DRAWING A - 1
--	------------------------

EXISTING CONDITION OF THE APPLICATION SITE

APPLICATION SITE AREA : 3,158 m² (ABOUT)
 EXISTING SITE SURFACE : SOILED GROUND
 EXISTING SITE LEVELS : +16.9 mPD TO +17.7 mPD (ABOUT)



EXISTING SITE LEVEL OF THE APPLICATION SITE
(INDICATIVE ONLY)

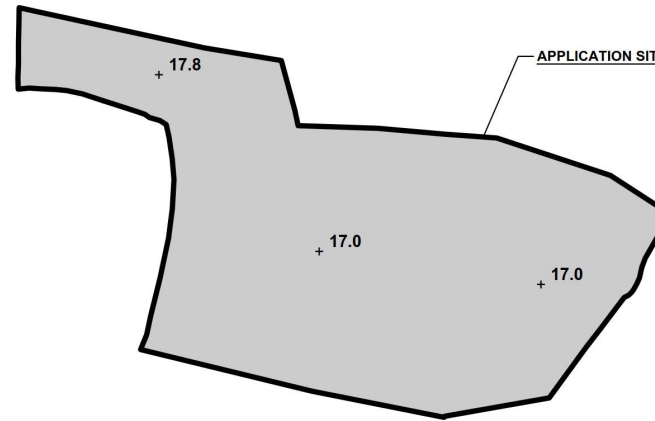
LEGEND

 APPLICATION SITE
 +8.9 EXISTING SITE LEVEL

SITE LEVELS ARE FOR REFERENCE ONLY.

PROPOSED FILLING OF LAND AREA OF THE APPLICATION SITE

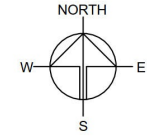
APPLICATION SITE AREA : 3,158 m² (ABOUT)
 PROPOSED FILLING OF LAND AREA : 3,158 m² (ABOUT)
 DEPTH OF LAND FILLING : NOT MORE THAN 0.1 m
 PROPOSED SITE LEVELS : +17.0 mPD TO +17.8 mPD (ABOUT)
 MATERIAL OF LAND FILLING : CONCRETE
 PURPOSE OF LAND FILLING : SITE FORMATION OF STRUCTURE AND CIRCULATION SPACE



PROPOSED SITE LEVEL OF THE APPLICATION SITE
(INDICATIVE ONLY)

LEGEND

 APPLICATION SITE
 PROPOSED FILLED AREA
 +9.5 PROPOSED SITE LEVEL



PLANNING CONSULTANT



PROJECT

TEMPORARY WAREHOUSE AND OPEN STORAGE OF CONSTRUCTION MATERIALS WITH ANCILLARY FACILITIES AND ASSOCIATED FILLING OF LAND FOR A PERIOD OF 3 YEARS

SITE LOCATION

VARIOUS LOTS IN D.D. 107, FUNG KAT HEUNG, KAM TIN, YUEN LONG, NEW TERRITORIES

SCALE

1:1000 @ A4

DRAWN BY

MN

DATE

5.7.2024

CHECKED BY

DATE

APPROVED BY

DATE

DWG. TITLE

FILLING OF LAND AREA

DWG NO.

PLAN 6

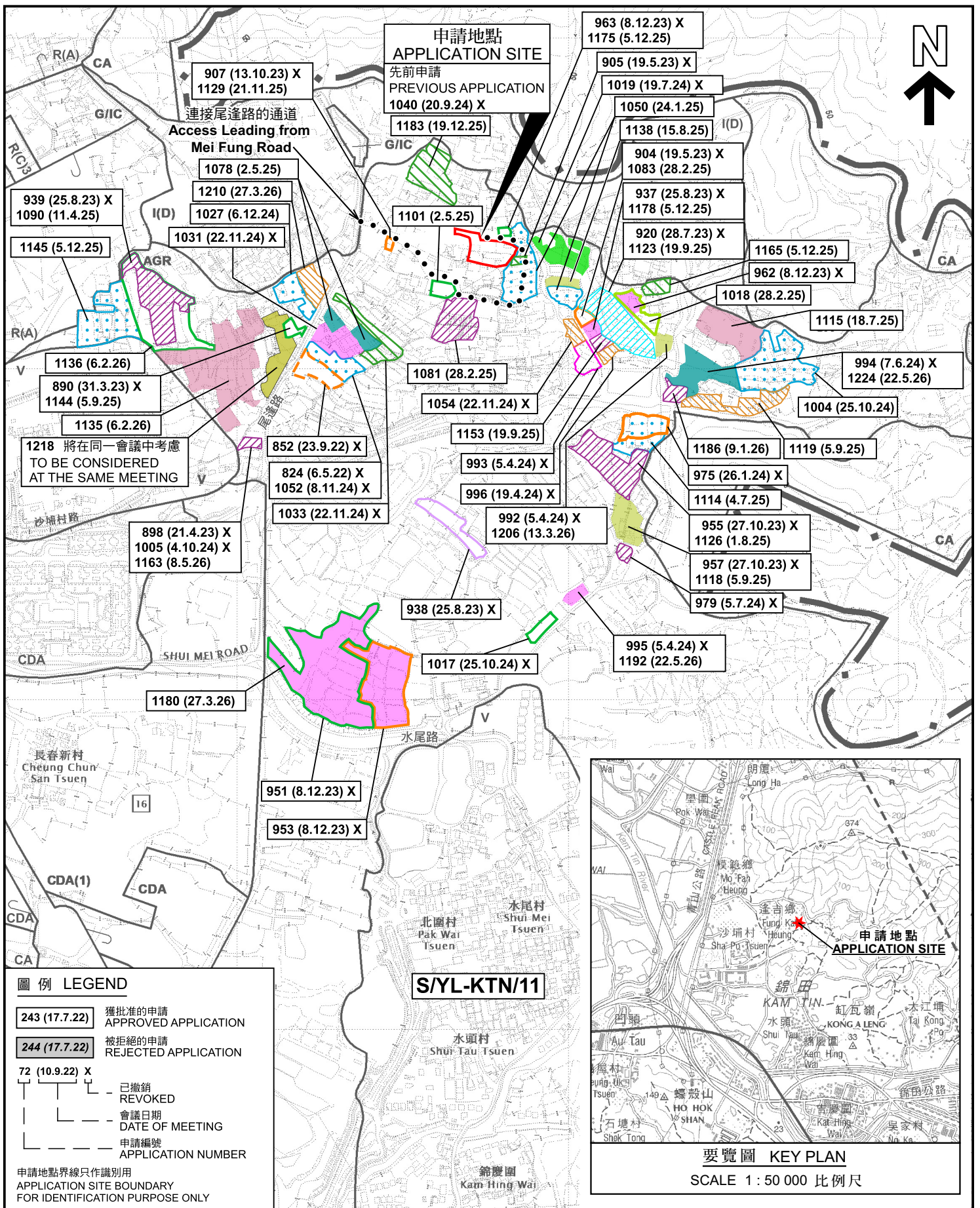
VER.

001

(摘錄自申請人於 17.4.2026 呈交的申請書)
 (Extract from Applicant's Submission of 17.4.2026)

參考編號
 REFERENCE No.
 A/YL-KTN/1231

繪圖
 DRAWING
 A - 2



本摘要圖於2026年5月29日擬備，所根據的資料為於2023年12月5日核准的分區計劃大綱圖編號 S/YL-KTN/11
 EXTRACT PLAN PREPARED ON 29.5.2026 BASED ON OUTLINE ZONING PLAN No. S/YL-KTN/11 APPROVED ON 5.12.2023

位置圖 LOCATION PLAN

臨時貨倉(危險品倉庫除外)及露天存放建築材料連附屬設施及相關的填土工程(為期3年)
 TEMPORARY WAREHOUSE (EXCLUDING DANGEROUS GOODS GODOWN) AND OPEN STORAGE OF CONSTRUCTION MATERIALS WITH ANCILLARY FACILITIES AND ASSOCIATED FILLING OF LAND FOR A PERIOD OF 3 YEARS

元朗錦田北達吉鄉丈量約份第107約多個地段
 VARIOUS LOTS IN D.D.107, FUNG KAT HEUNG, KAM TIN NORTH, YUEN LONG

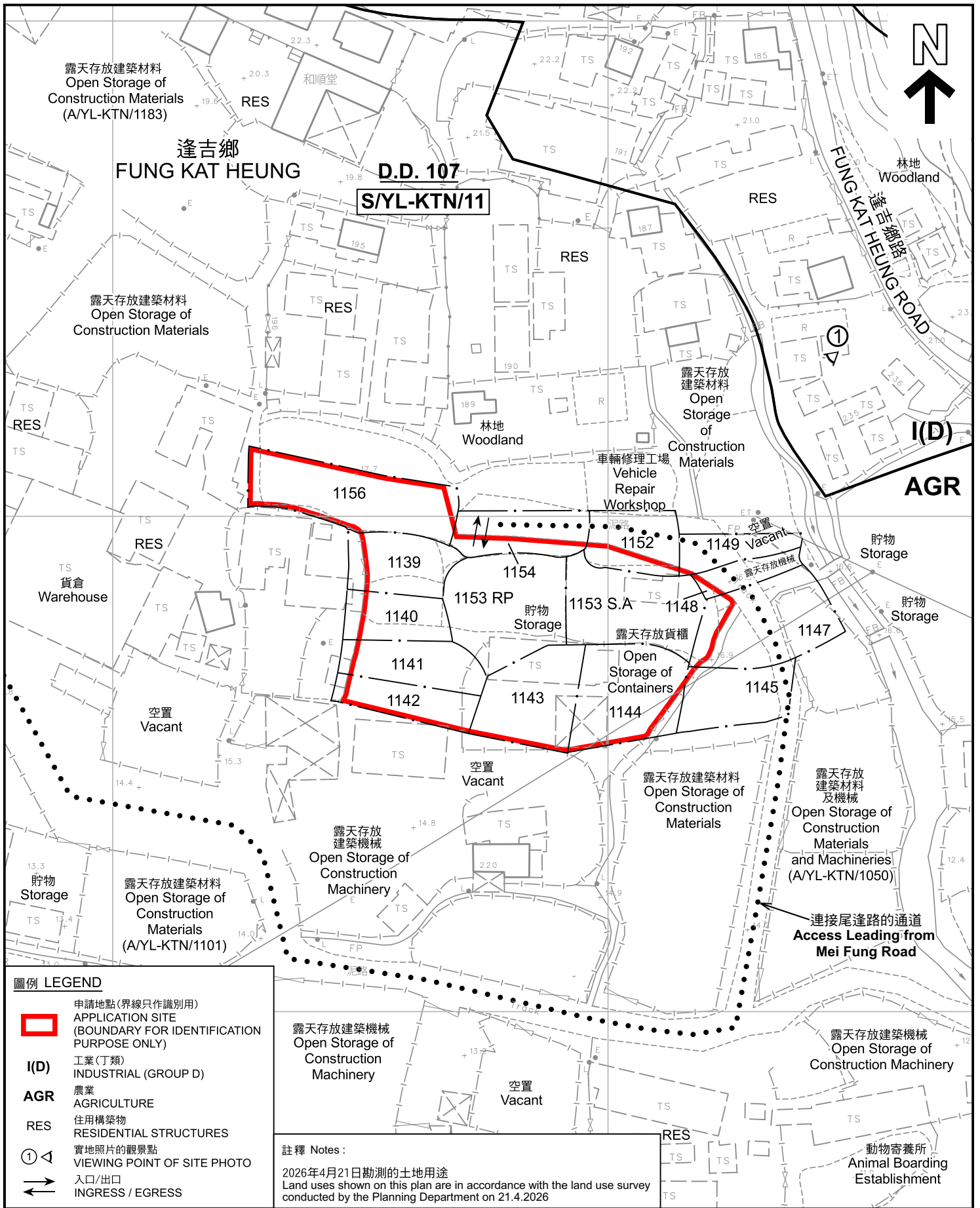
SCALE 1 : 7 500 比例尺

米 100 0 100 200 300 米
 METRES

規劃署 Planning Department

參考編號 REFERENCE No.
A/YL-KTN/1231

圖 PLAN
A-1



圖例 LEGEND

- 申請地點(界線只作識別用)
APPLICATION SITE
(BOUNDARY FOR IDENTIFICATION
PURPOSE ONLY)
- I(D)** 工業(丁類)
INDUSTRIAL (GROUP D)
- AGR** 農業
AGRICULTURE
- RES** 住用構築物
RESIDENTIAL STRUCTURES
- 實地照片的觀景點
VIEWING POINT OF SITE PHOTO
- 入口/出口
INGRESS / EGRESS

註釋 Notes :

2026年4月21日勘測的土地用途
Land uses shown on this plan are in accordance with the land use survey conducted by the Planning Department on 21.4.2026

本摘要圖於2026年5月27日擬備，
所根據的資料為測量圖編號
6-NE-2C
EXTRACT PLAN PREPARED ON 27.5.2026
BASED ON SURVEY SHEET No.
6-NE-2C

平面圖 SITE PLAN

臨時貨倉(危險品倉庫除外)及露天存放建築材料
連附屬設施及相關的填土工程(為期3年)
元朗錦田北逢吉鄉丈量約份第107約多個地段
TEMPORARY WAREHOUSE (EXCLUDING DANGEROUS GOODS GODOWN)
AND OPEN STORAGE OF CONSTRUCTION MATERIALS
WITH ANCILLARY FACILITIES AND ASSOCIATED FILLING OF LAND
FOR A PERIOD OF 3 YEARS
VARIOUS LOTS IN D.D.107, FUNG KAT HEUNG, KAM TIN NORTH, YUEN LONG

SCALE 1 : 1 000 比例尺

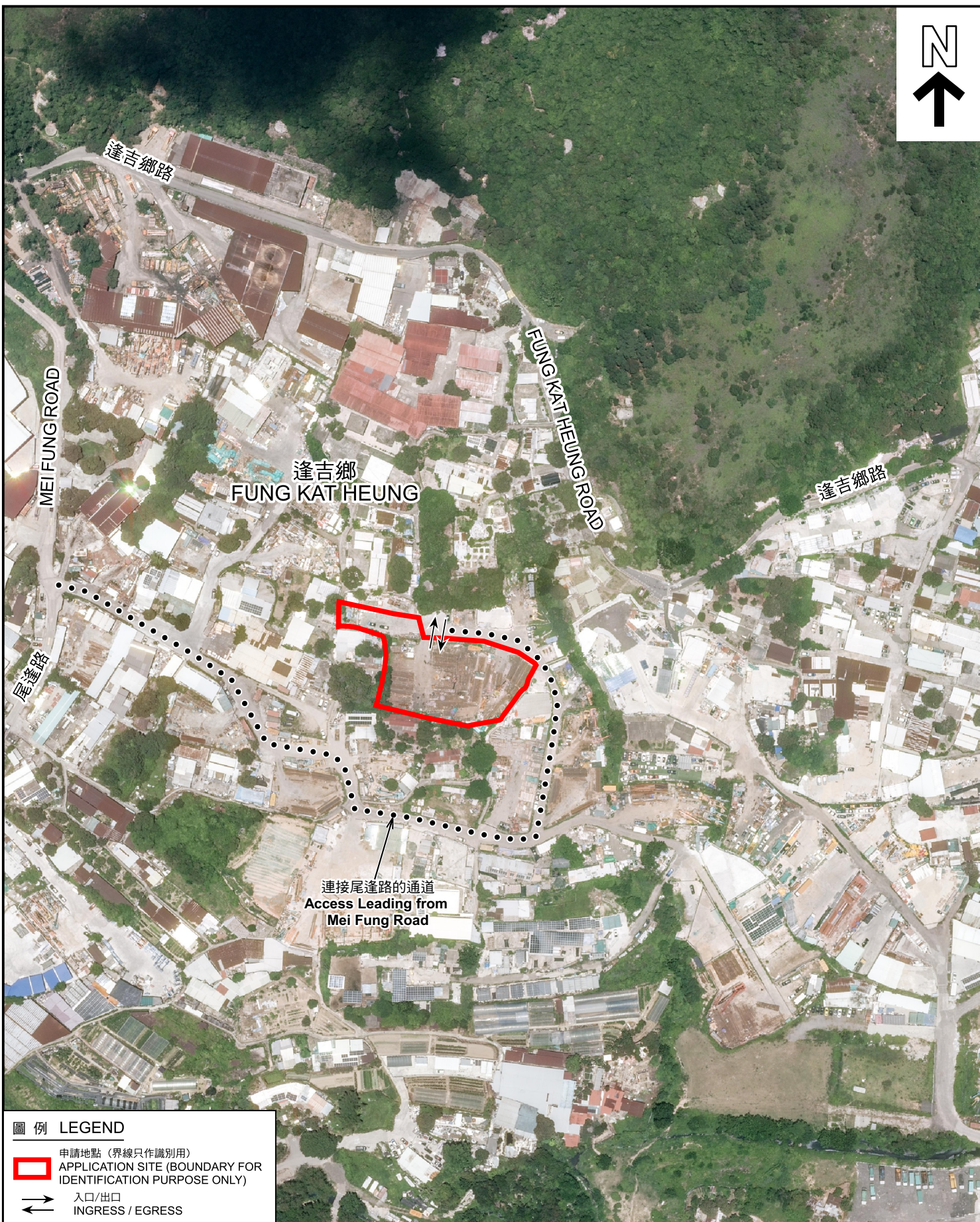
米 METRES 20 0 20 40 米 METRES



規劃署
Planning Department

參考編號
REFERENCE No.
A/YL-KTN/1231

圖 PLAN
A-2



圖例 LEGEND

-  申請地點 (界線只作識別用)
APPLICATION SITE (BOUNDARY FOR IDENTIFICATION PURPOSE ONLY)
-  入口/出口
INGRESS / EGRESS

航攝照片 AERIAL PHOTO

本摘要圖於2026年5月13日擬備，
所根據的資料為地政總署於2025年6月10日
拍得的航攝照片編號 E257810C
EXTRACT PLAN PREPARED ON 13.5.2026
BASED ON AERIAL PHOTO No.
E257810C TAKEN ON 10.6.2025
BY LANDS DEPARTMENT

臨時貨倉 (危險品倉庫除外) 及露天存放建築材料
連附屬設施及相關的填土工程 (為期3年)
元朗錦田北逢吉鄉丈量約份第107約多個地段
TEMPORARY WAREHOUSE (EXCLUDING DANGEROUS GOODS GODOWN)
AND OPEN STORAGE OF CONSTRUCTION MATERIALS
WITH ANCILLARY FACILITIES AND ASSOCIATED FILLING OF LAND
FOR A PERIOD OF 3 YEARS
VARIOUS LOTS IN D.D.107, FUNG KAT HEUNG, KAM TIN NORTH, YUEN LONG



規劃署
Planning Department

參考編號
REFERENCE No.
AYL-KTN/1231

圖 PLAN
A-3

1



申請地點界線只作識別用 APPLICATION SITE BOUNDARY FOR IDENTIFICATION PURPOSE ONLY

實地照片 SITE PHOTO

本圖於2026年5月11日擬備，所根據的資料為攝於2026年4月21日的實地照片
PLAN PREPARED ON 11.5.2026
BASED ON SITE PHOTO
TAKEN ON 21.4.2026

臨時貨倉(危險品倉庫除外)及露天存放建築材料
連附屬設施及相關的填土工程(為期3年)
元朗錦田北達吉鄉丈量約份第107約多個地段
TEMPORARY WAREHOUSE (EXCLUDING DANGEROUS GOODS GODOWN)
AND OPEN STORAGE OF CONSTRUCTION MATERIALS
WITH ANCILLARY FACILITIES AND ASSOCIATED FILLING OF LAND
FOR A PERIOD OF 3 YEARS
VARIOUS LOTS IN D.D.107, FUNG KAT HEUNG, KAM TIN NORTH, YUEN LONG



規劃署
Planning Department

參考編號
REFERENCE No.
AYL-KTN/1231

圖 PLAN
A-4