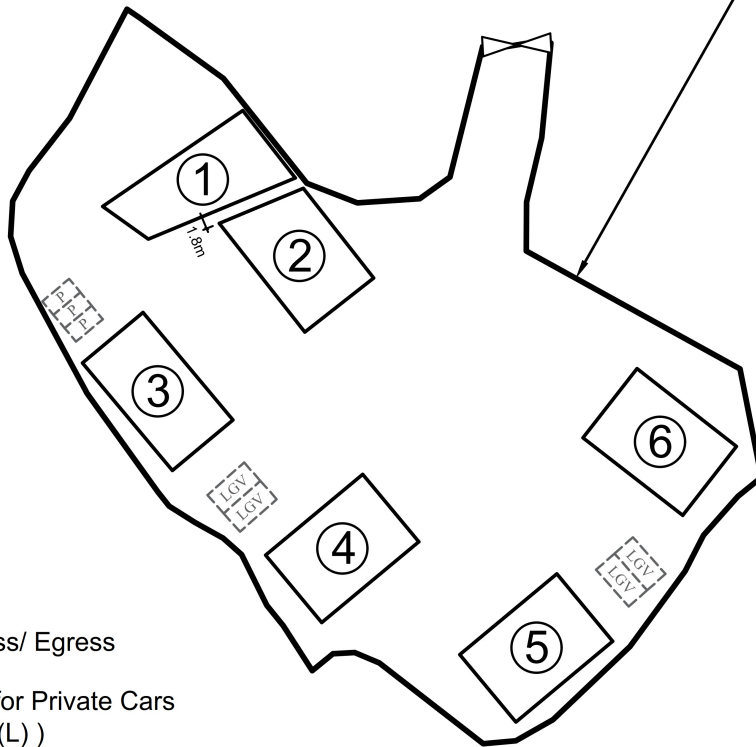




Application Site



Legend



Vehicular Ingress/ Egress



Parking Space for Private Cars
(2.5m(W) x 5m(L))



Parking Space for Light Goods Vehicle
(3.5m(W) x 7m(L))

Site Area: 6,147m²

| No. | Uses | Floor Area (about) | Covered Area (about) | Storeys | Height |
|-------|---|----------------------------|----------------------------|---------|--------|
| 1 | Shop(Hardware Groceries and Construction Materials) | 225 m ² | 225 m ² | 1 | 5m |
| 2 | Shop(Hardware Groceries and Construction Materials) | 225 m ² | 225 m ² | 1 | 5m |
| 3 | Shop(Hardware Groceries and Construction Materials) with reception and ancillary office | 225 m ² | 225 m ² | 1 | 5m |
| 4 | Shop(Hardware Groceries and Construction Materials) | 225 m ² | 225 m ² | 1 | 5m |
| 5 | Shop(Hardware Groceries and Construction Materials) | 225 m ² | 225 m ² | 1 | 5m |
| 6 | Shop(Hardware Groceries and Construction Materials) | 225 m ² | 225 m ² | 1 | 5m |
| Total | | <u>1,350 m²</u> | <u>1,350 m²</u> | | |

1:1000 (A4)

Layout Plan

Goldrich Planners & Surveyors Ltd.

April 2026

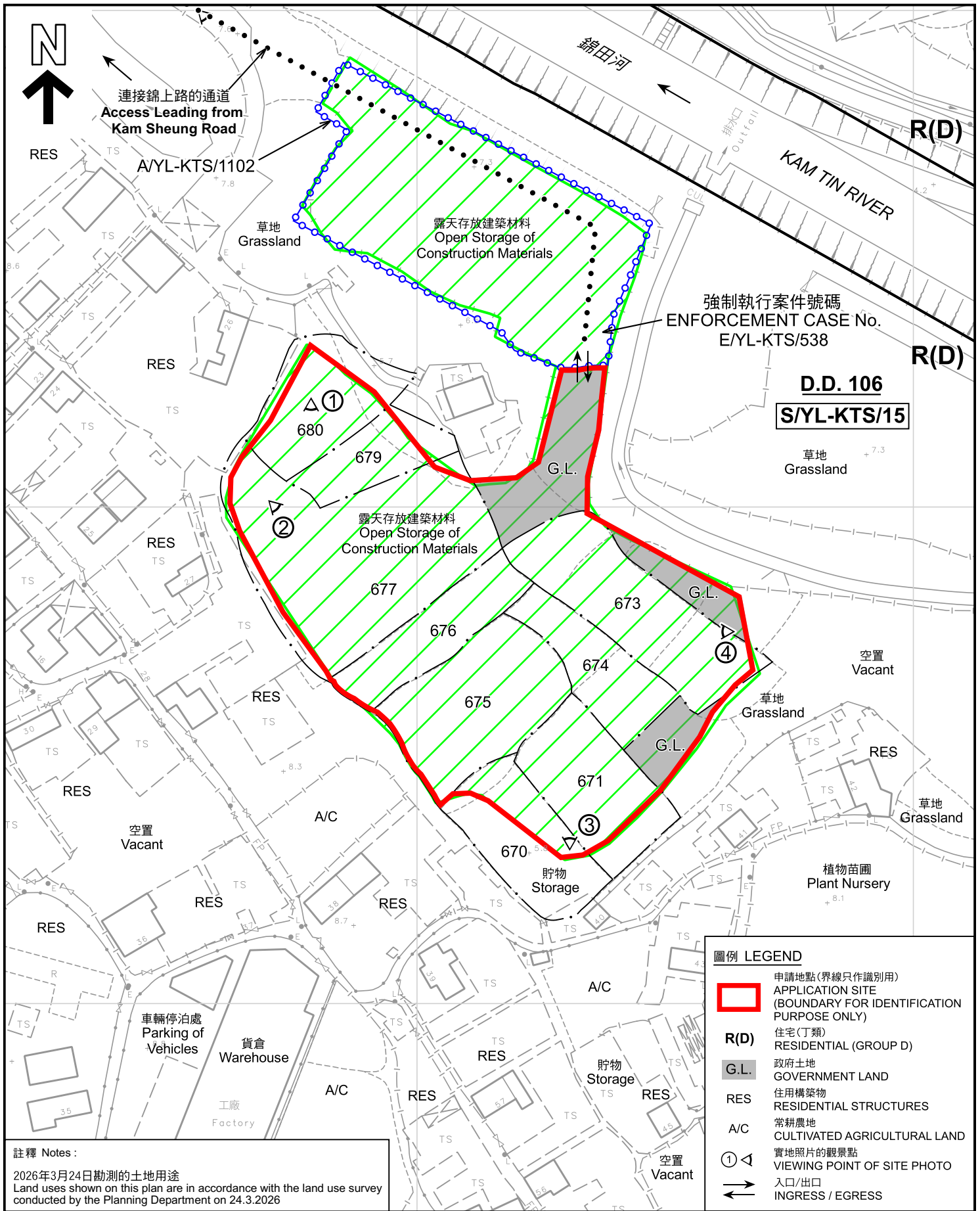
Lots 670(part), 671(part), 673(part), 674, 675, 676, 677(part), 679(part) and 680(part) in DD.106 and adjoining Government Land

Plan 3a (P 22068A)

(摘錄自申請人於24. 4. 2026呈交的進一步資料)
(Extract from Applicant's Further Information Submitted on 24.4.2026)

參考編號
REFERENCE No.
A/YL-KTS/1101

繪圖
DRAWING
A - 1



註釋 Notes :
 2026年3月24日勘測的土地用途
 Land uses shown on this plan are in accordance with the land use survey conducted by the Planning Department on 24.3.2026

| 圖例 LEGEND | |
|-------------|--|
| | 申請地點(界線只作識別用) APPLICATION SITE (BOUNDARY FOR IDENTIFICATION PURPOSE ONLY) |
| R(D) | 住宅(丁類) RESIDENTIAL (GROUP D) |
| G.L. | 政府土地 GOVERNMENT LAND |
| RES | 住用構築物 RESIDENTIAL STRUCTURES |
| A/C | 常耕農地 CULTIVATED AGRICULTURAL LAND |
| ① ◁ | 實地照片的觀景點 VIEWING POINT OF SITE PHOTO |
| ↔ | 入口/出口 INGRESS / EGRESS |

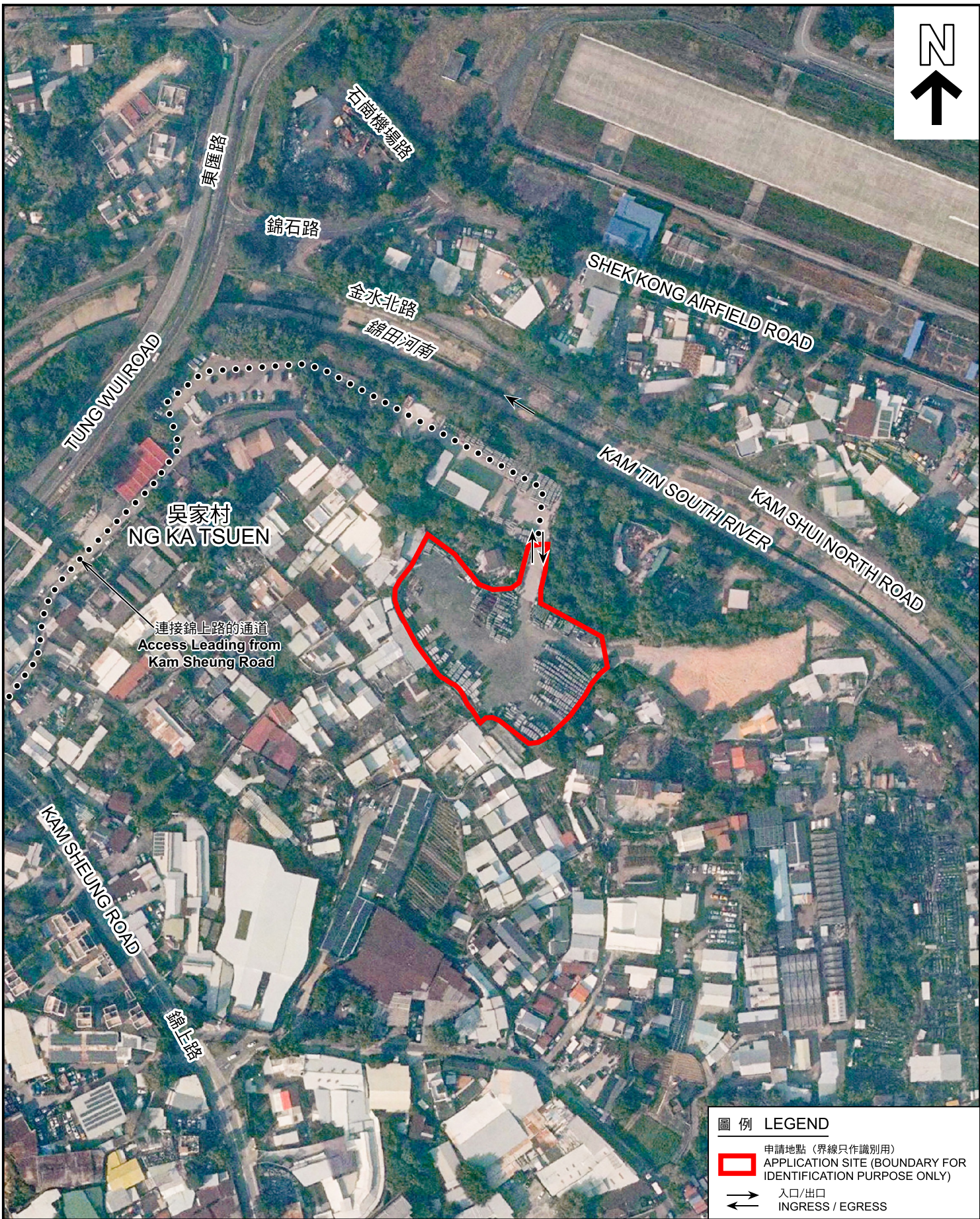
本摘要圖於2026年5月22日擬備，
 所根據的資料為測量圖編號
 6-NE-12B、12D、13A 及 13C
 EXTRACT PLAN PREPARED ON 22.5.2026
 BASED ON SURVEY SHEETS No.
 6-NE-12B, 12D, 13A & 13C

平面圖 SITE PLAN

臨時商店及服務行業(五金雜貨及建築材料零售店)連附屬設施(為期5年)
 新界元朗丈量約份第106約多個地段和毗連政府土地
 TEMPORARY SHOP AND SERVICES
 (RETAIL SHOP FOR HARDWARE GROCERIES AND CONSTRUCTION MATERIALS)
 WITH ANCILLARY FACILITIES FOR A PERIOD OF 5 YEARS
 VARIOUS LOTS IN D.D. 106 AND ADJOINING GOVERNMENT LAND,
 YUEN LONG, NEW TERRITORIES

SCALE 1 : 1 000 比例尺
 米 METRES 20 0 20 40 米 METRES

| | | |
|---------------------------------------|---|----------------------|
| 規劃署 Planning Department | 參考編號 REFERENCE No. A/YL-KTS/1101 | 圖 PLAN A-2 |
|---------------------------------------|---|----------------------|



吳家村
NG KATSUEN

連接錦上路的通道
Access Leading from
Kam Sheung Road

圖例 LEGEND

-  申請地點 (界線只作識別用)
APPLICATION SITE (BOUNDARY FOR IDENTIFICATION PURPOSE ONLY)
-  入口/出口
INGRESS / EGRESS

航攝照片 AERIAL PHOTO

本摘要圖於2026年5月15日擬備，
所根據的資料為地政總署於2025年1月3日
拍得的航攝照片編號 E246848C
EXTRACT PLAN PREPARED ON 15.5.2026
BASED ON AERIAL PHOTO No.
E246848C TAKEN ON 3.1.2025
BY LANDS DEPARTMENT

臨時商店及服務行業(五金雜貨及建築材料零售店)連附屬設施(為期5年)
新界元朗丈量約份第106約多個地段和毗連政府土地
TEMPORARY SHOP AND SERVICES
(RETAIL SHOP FOR HARDWARE GROCERIES AND CONSTRUCTION MATERIALS)
WITH ANCILLARY FACILITIES FOR A PERIOD OF 5 YEARS
VARIOUS LOTS IN D.D. 106 AND ADJOINING GOVERNMENT LAND,
YUEN LONG, NEW TERRITORIES



規劃署
Planning Department

參考編號
REFERENCE No.
AYL-KTS/1101

圖 PLAN
A-3



申請地點界線只作識別用 APPLICATION SITE BOUNDARY FOR IDENTIFICATION PURPOSE ONLY

實地照片 SITE PHOTOS

本圖於2026年5月15日擬備，所根據的資料為攝於2026年3月24日的實地照片
 PLAN PREPARED ON 15.5.2026
 BASED ON SITE PHOTOS
 TAKEN ON 24.3.2026

臨時商店及服務行業(五金雜貨及建築材料零售店)連附屬設施(為期5年)
 新界元朗丈量約份第106約多個地段和毗連政府土地
 TEMPORARY SHOP AND SERVICES
 (RETAIL SHOP FOR HARDWARE GROCERIES AND CONSTRUCTION MATERIALS)
 WITH ANCILLARY FACILITIES FOR A PERIOD OF 5 YEARS
 VARIOUS LOTS IN D.D. 106 AND ADJOINING GOVERNMENT LAND,
 YUEN LONG, NEW TERRITORIES



規劃署
 Planning Department

參考編號
 REFERENCE No.
 A/YL-KTS/1101

圖 PLAN
 A-4