




Application Site

The open area is used for vehicle maneuvering and walkway

Legend

-  Vehicular Ingress / Egress
-  Parking space for medium goods vehicle (11m (L) x 3.5m (W))
-  Parking space for private cars (5m (L) x 2.5m (W))

Site Area(about): 6,197m²

| No. | Uses | Covered Area (about) | Floor Area (about) | Storeys | Height |
|-------|---------------------------------|----------------------------|----------------------------|---------|--------|
| 1 | Warehouse with Ancillary Office | 225 m ² | 225 m ² | 1 | 11m |
| 2 | Warehouse with Ancillary Office | 225 m ² | 225 m ² | 1 | 11m |
| 3 | Warehouse with Ancillary Office | 225 m ² | 225 m ² | 1 | 11m |
| 4 | Warehouse with Ancillary Office | 225 m ² | 225 m ² | 1 | 11m |
| 5 | Warehouse with Ancillary Office | 225 m ² | 225 m ² | 1 | 11m |
| 6 | Warehouse with Ancillary Office | 225 m ² | 225 m ² | 1 | 11m |
| 7 | Warehouse with Ancillary Office | 225 m ² | 225 m ² | 1 | 11m |
| Total | | <u>1,575 m²</u> | <u>1,575 m²</u> | | |

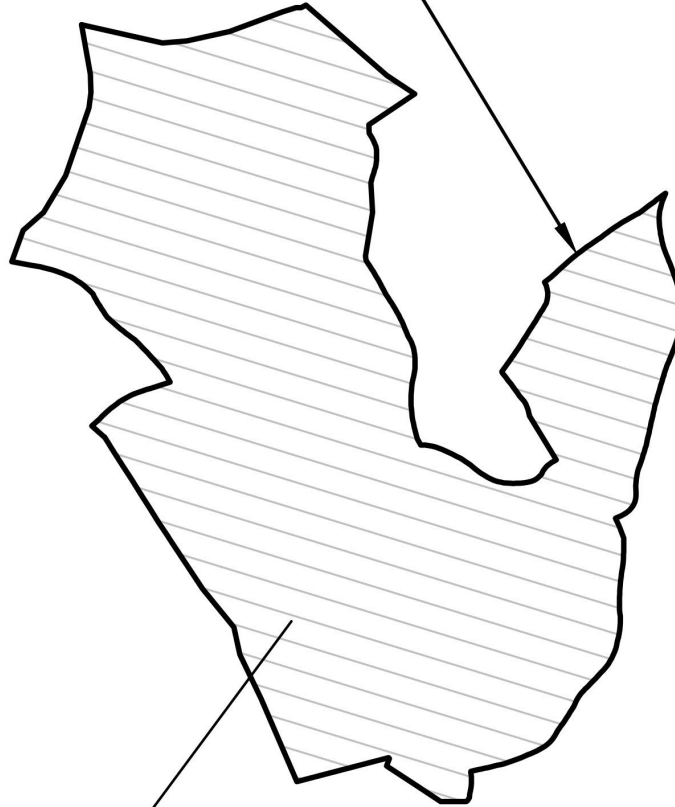
| | | |
|-------------------|---|---|
| ±:1000 | Layout Plan | Goldrich Planners & Surveyors Ltd. |
| March 2025 | Lots 1012 S.B, 1012 S.C, 1013, 1014RP, 1015 S.A, 1015 S.B, 1015 RP, 1016(part), 1018, 1034(part) and 1035 in D.D. 113 Yuen Long, N.T. | Plan 3 (P 25012) |

(摘錄自申請人於 8.4.2026 呈交的申請書)
(Extract from Applicant's Submission of 8.4.2026)

| | |
|---|--------------------------------------|
| 參考編號 REFERENCE No. AYL-KTS/1125 | 繪圖 DRAWING A - 1 |
|---|--------------------------------------|



Application Site



The whole site will be filled with concrete of about 0.2m in depth (from 19.2mPD to 19.4mPD) for erection of structures and vehicle maneuvering

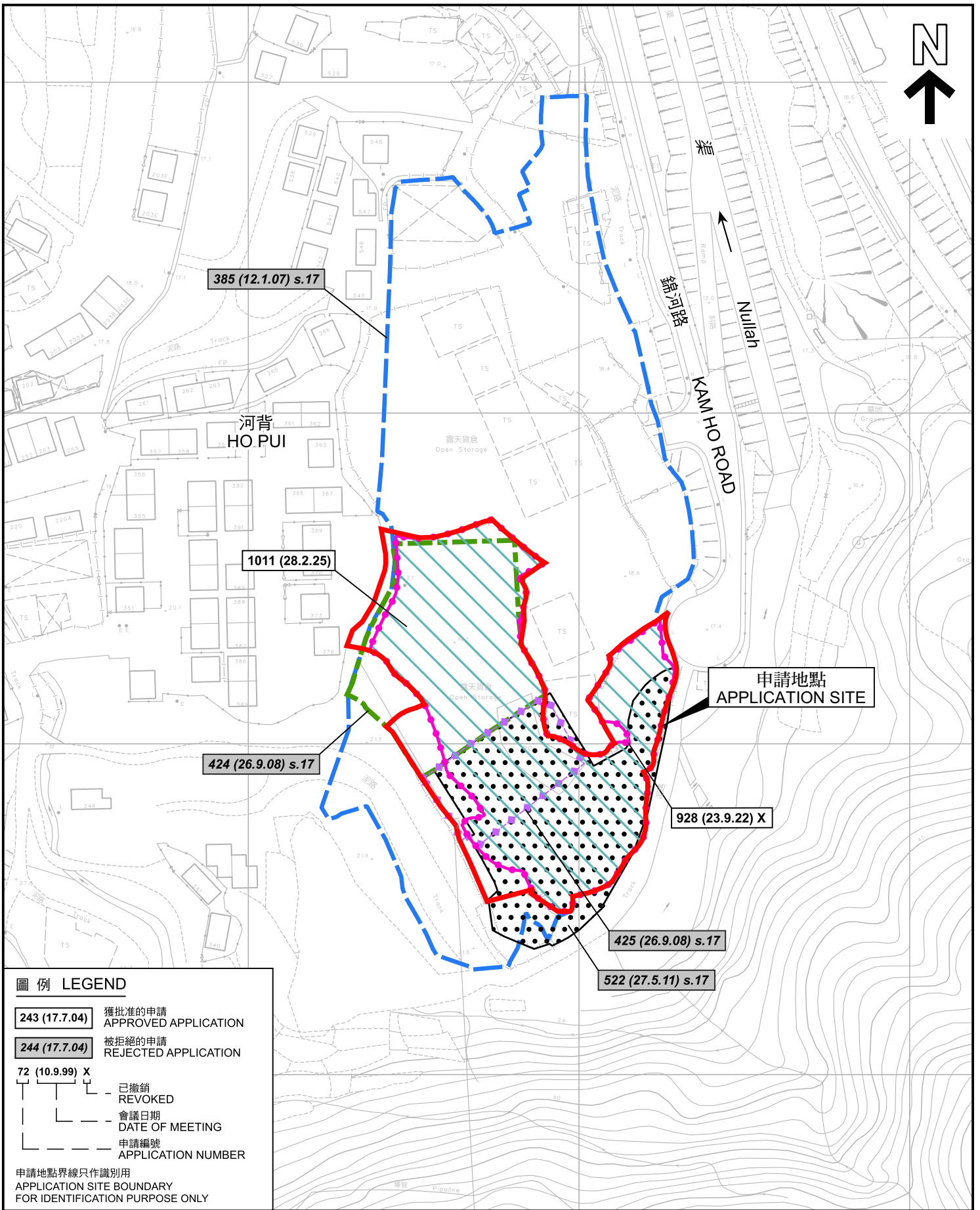
Site Area(about): 6,197m²

| | | |
|------------------|---|---|
| 1:1000 | Plan Showing Proposed Filling of Land | Goldrich Planners & Surveyors Ltd. |
| June 2025 | Lots 1012 S.B, 1012 S.C, 1013, 1014RP, 1015 S.A, 1015 S.B, 1015 RP, 1016(part), 1018, 1034(part) and 1035 in D.D. 113 Yuen Long, N.T. | Plan 5 (P 25012) |

(摘錄自申請人於 8.4.2026 呈交的申請書)
(Extract from Applicant's Submission of 8.4.2026)

參考編號
REFERENCE No.
A/YL-KTS/1125

繪圖
DRAWING
A - 2



圖例 LEGEND

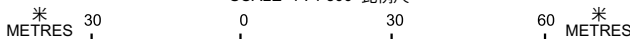
- 243 (17.7.04) 獲批准的申請
APPROVED APPLICATION
- 244 (17.7.04) 被拒絕的申請
REJECTED APPLICATION
- 72 (10.9.99) X 已撤銷
REVOKED
- | 會議日期
DATE OF MEETING
- | 申請編號
APPLICATION NUMBER

申請地點界線只作識別用
APPLICATION SITE BOUNDARY
FOR IDENTIFICATION PURPOSE ONLY

先前申請圖 PREVIOUS APPLICATION PLAN

擬議臨時貨倉（危險品倉庫除外）連附屬辦公室及
相關的填土工程（為期 3 年）
元朗錦田南丈量約份第 113 約多個地段
PROPOSED TEMPORARY WAREHOUSE (EXCLUDING DANGEROUS
GOODS GODOWN) WITH ANCILLARY OFFICE AND ASSOCIATED
FILLING OF LAND FOR A PERIOD OF 3 YEARS
VARIOUS LOTS IN D.D.113, KAM TIN SOUTH, YUEN LONG

SCALE 1 : 1 500 比例尺

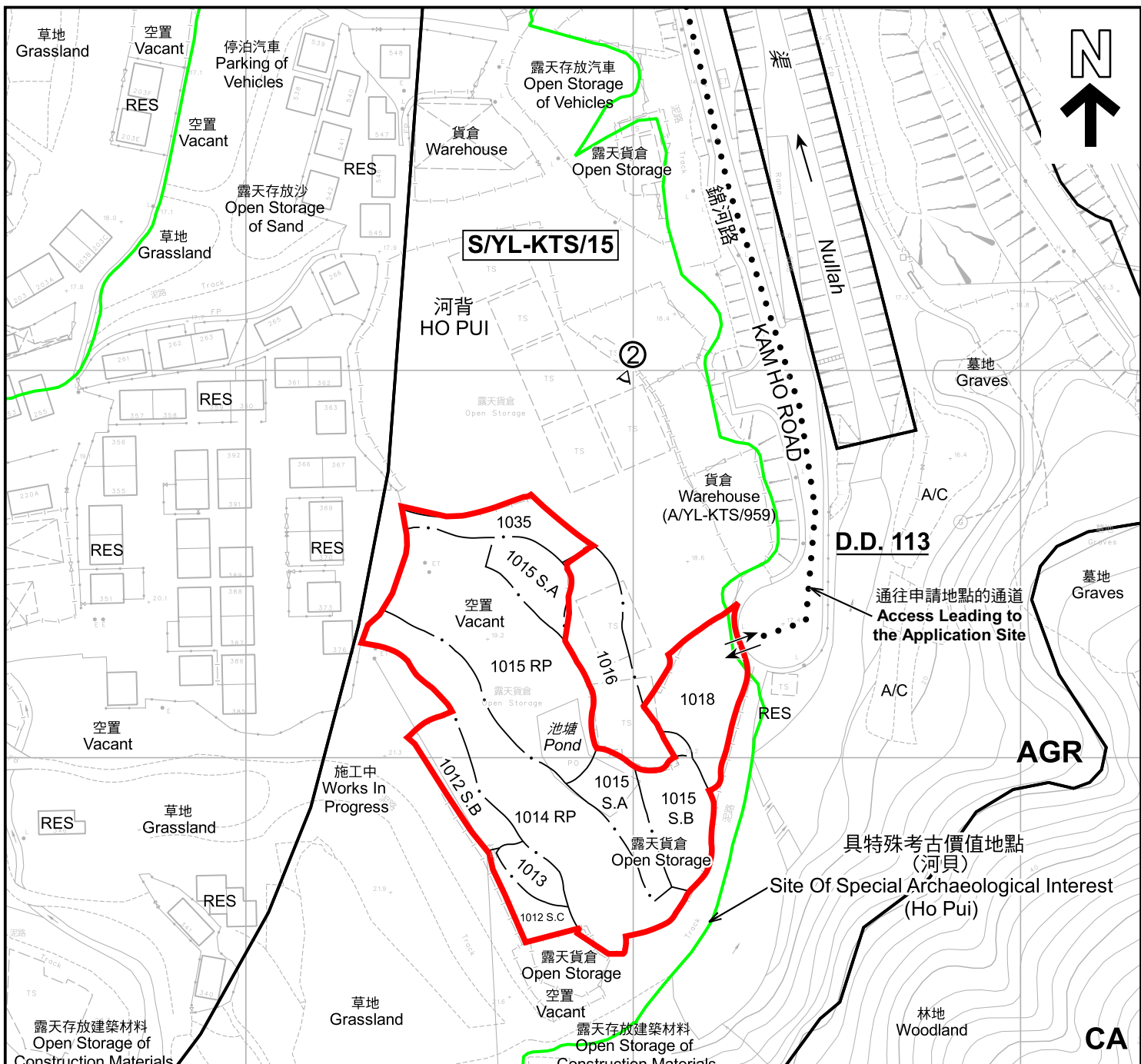


規劃署
Planning Department

參考編號
REFERENCE No.
A/YL-KTS/1125

圖 PLAN
A-1b

本摘要圖於2026年5月18日擬備，
所根據的資料為測量圖編號
6-NE-22B 及 22D
EXTRACT PLAN PREPARED ON 18.5.2026
BASED ON SURVEY SHEETS
No. 6-NE-22B & 22D



| 圖例 LEGEND | |
|-----------|---|
| | 申請地點(界線只作識別用) APPLICATION SITE (BOUNDARY FOR IDENTIFICATION PURPOSE ONLY) |
| | 鄉村式發展 VILLAGE TYPE DEVELOPMENT |
| | 農業 AGRICULTURE |
| | 自然保育區 CONSERVATION AREA |
| | 住用構築物 RESIDENTIAL STRUCTURES |
| | 常耕農地 CULTIVATED AGRICULTURAL LAND |
| | 入口/出口 INGRESS / EGRESS |
| | 實地照片的觀景點 VIEWING POINT OF SITE PHOTO |

註釋 Notes :
 2026年4月27日勘測的土地用途
 Land uses shown on this plan are in accordance with the land use survey conducted by the Planning Department on 27.4.2026

本摘要圖於2026年6月1日擬備，
 所根據的資料為測量圖編號6-NE-22D
 EXTRACT PLAN PREPARED ON 1.6.2026
 BASED ON SURVEY SHEET No 6-NE-22D

平面圖 SITE PLAN

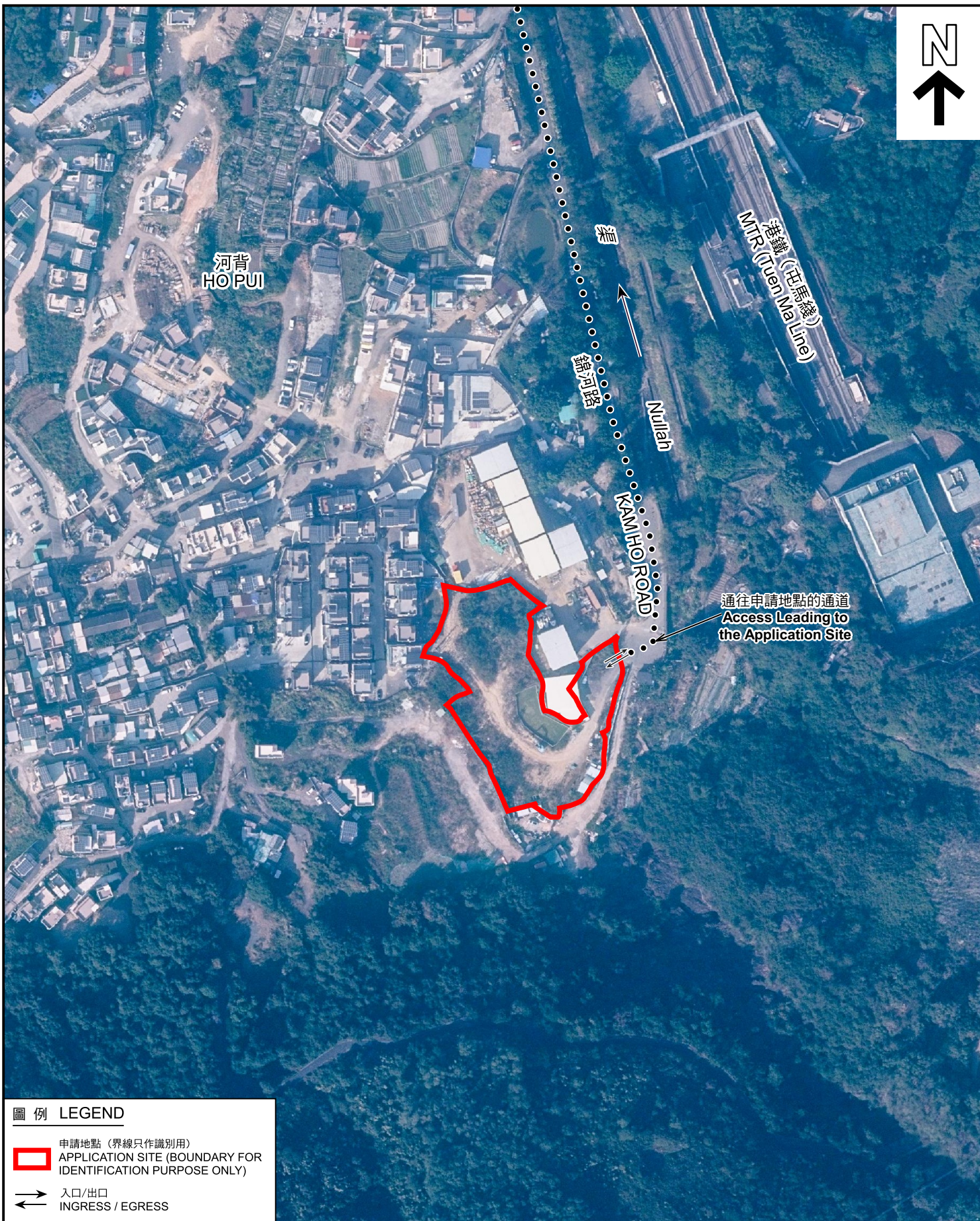
擬議臨時貨倉(危險品倉庫除外)連附屬辦公室及
 相關的填土工程(為期3年)
 元朗錦田南丈量約份第113約多個地段
 PROPOSED TEMPORARY WAREHOUSE (EXCLUDING DANGEROUS
 GOODS GODOWN) WITH ANCILLARY OFFICE AND ASSOCIATED
 FILLING OF LAND FOR A PERIOD OF 3 YEARS
 VARIOUS LOTS IN D.D.113, KAM TIN SOUTH, YUEN LONG

SCALE 1 : 1 500 比例尺

米 30 METRES
0
30 米 METRES

規劃署
Planning Department

| | |
|-----------------------|--------|
| 參考編號 REFERENCE No. | 圖 PLAN |
| A/YL-KTS/1125 | A-2 |



圖例 LEGEND

申請地點 (界線只作識別用)
APPLICATION SITE (BOUNDARY FOR IDENTIFICATION PURPOSE ONLY)

入口/出口
INGRESS / EGRESS

航攝照片 AERIAL PHOTO

本摘要圖於2026年5月19日擬備，
所根據的資料為地政總署於2025年1月3日
拍得的航攝照片編號 E246571
EXTRACT PLAN PREPARED ON 19.5.2026
BASED ON AERIAL PHOTO No. E246571
TAKEN ON 3.1.2025
BY LANDS DEPARTMENT

擬議臨時貨倉 (危險品倉庫除外) 連附屬辦公室及
相關的填土工程 (為期 3 年)
元朗錦田南丈量約份第 113 約多個地段
PROPOSED TEMPORARY WAREHOUSE (EXCLUDING DANGEROUS
GOODS GODOWN) WITH ANCILLARY OFFICE AND ASSOCIATED
FILLING OF LAND FOR A PERIOD OF 3 YEARS
VARIOUS LOTS IN D.D.113, KAM TIN SOUTH, YUEN LONG



規劃署
Planning Department

參考編號
REFERENCE No.
AYL-KTS/1125

圖 PLAN
A-3

1



2



申請地點界線只作識別用 APPLICATION SITE BOUNDARY FOR IDENTIFICATION PURPOSE ONLY

實地照片 SITE PHOTOS

本摘要圖於2026年5月18日擬備，
資料為攝於2026年4月21日的實地照片
EXTRACT PLAN PREPARED ON 18.5.2026
BASED ON SITE PHOTOS
TAKEN ON 21.4.2026

擬議臨時貨倉（危險品倉庫除外）連附屬辦公室及
相關的填土工程（為期 3 年）
元朗錦田南丈量約份第 113 約多個地段
PROPOSED TEMPORARY WAREHOUSE (EXCLUDING DANGEROUS
GOODS GODOWN) WITH ANCILLARY OFFICE AND ASSOCIATED
FILLING OF LAND FOR A PERIOD OF 3 YEARS
VARIOUS LOTS IN D.D.113, KAM TIN SOUTH, YUEN LONG



規劃署
Planning Department

參考編號
REFERENCE No.
A/YL-KTS/1125

圖 PLAN
A-4