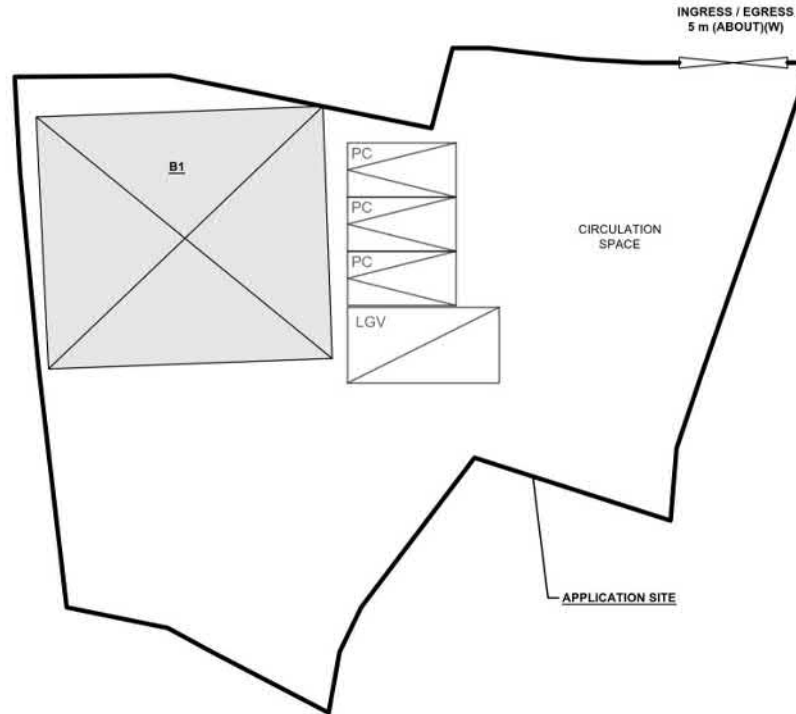
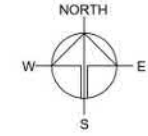


DEVELOPMENT PARAMETERS

APPLICATION SITE AREA	: 726.1 m ²	(ABOUT)
COVERED AREA	: 151.96 m ²	(ABOUT)
UNCOVERED AREA	: 574.14 m ²	(ABOUT)
PLOT RATIO	: 0.4	(ABOUT)
SITE COVERAGE	: 21 %	(ABOUT)
NO. OF STRUCTURE	: 1	
DOMESTIC GFA	: NOT APPLICABLE	
NON-DOMESTIC GFA	: 303.92 m ²	(ABOUT)
TOTAL GFA	: 303.92 m ²	(ABOUT)
BUILDING HEIGHT	: 6.5 m	(ABOUT)
NO. OF STOREY	: 2	

STRUCTURE	USE	COVERED AREA	GROSS FLOOR AREA	BUILDING HEIGHT
B1 (G/F) (1/F)	SHOP AND SERVICES ANCILLARY OFFICE	151.96 m ² (ABOUT)	303.92 m ² (ABOUT)	6.5 m (ABOUT)(2-STOREY)
TOTAL		151.96 m² (ABOUT)	303.92 m² (ABOUT)	



PLANNING CONSULTANT



PROJECT

RENEWAL OF PLANNING APPROVAL FOR TEMPORARY SHOP AND SERVICES (METAL HARDWARE SHOP AND HOUSEHOLD ITEM RETAIL STORE) FOR A PERIOD OF 5 YEARS

SITE LOCATION

LOT 20 RP IN D.D. 101, MAI PO, YUEN LONG, NEW TERRITORIES

SCALE

1:500 @ A1

DRAWN BY	DATE
MN	16.3.2026
REVISED BY	DATE
APPROVED BY	DATE

DWG. TITLE

LAYOUT PLAN

DWG. NO.	VER.
PLAN 4	001

LEGEND

- APPLICATION SITE
- STRUCTURE (ENCLOSED)
- PARKING SPACE (PC)
- LOADING / UNLOADING SPACE (LGV)
- INGRESS / EGRESS

PARKING PROVISIONS

NO. OF PRIVATE CAR PARKING SPACE	: 3
DIMENSION OF PARKING SPACE	: 5 m (L) x 2.5 m (W)

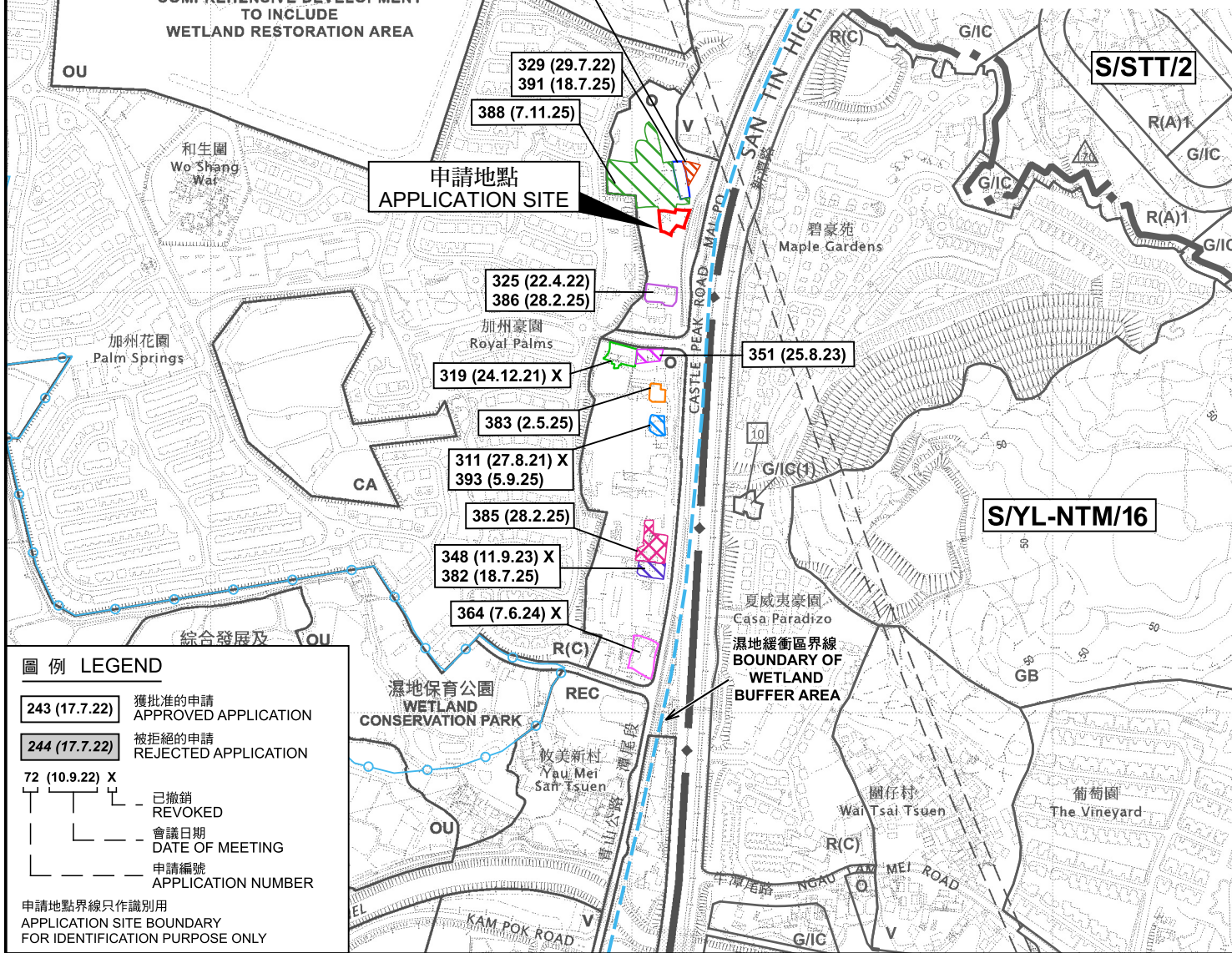
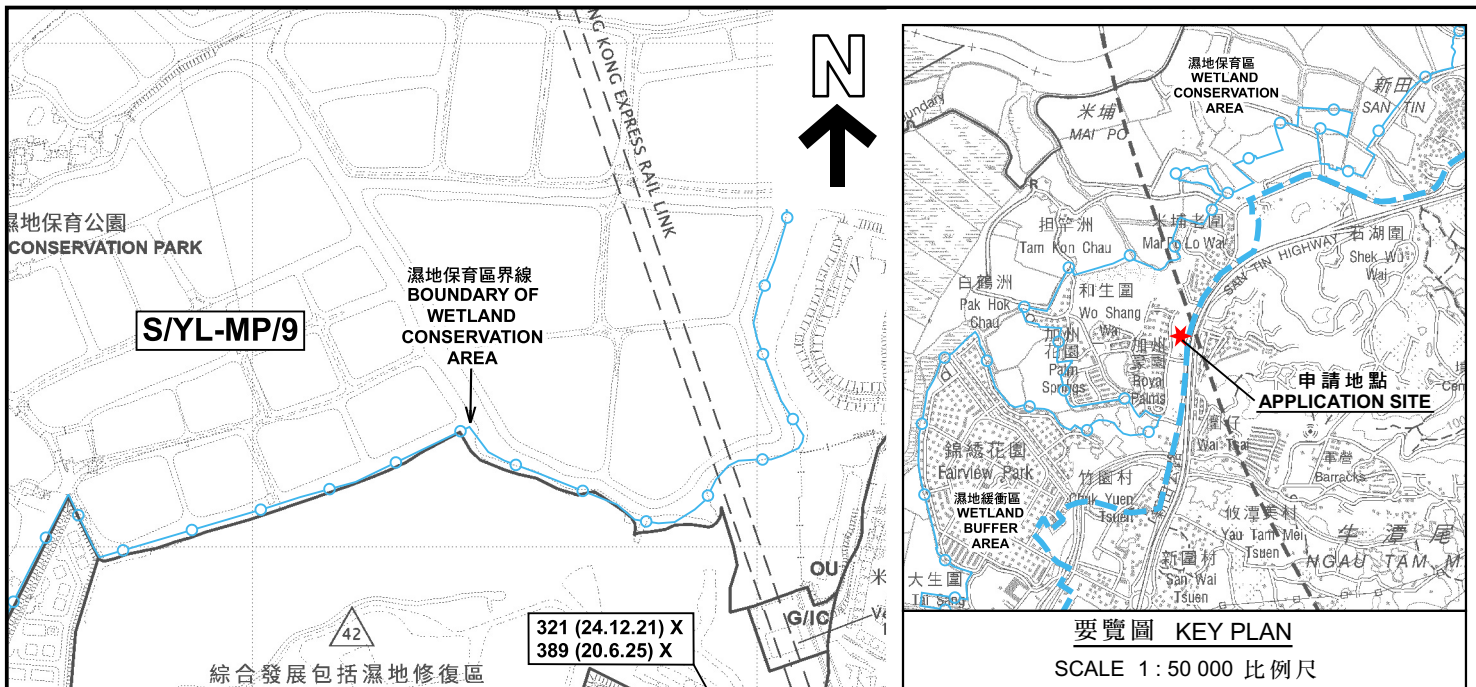
LOADING / UNLOADING PROVISIONS

NO. OF L/U SPACE FOR LIGHT GOODS VEHICLE	: 1
DIMENSION OF L/U SPACE	: 7 m (L) x 3.5 m (W)

*SITE BOUNDARY FOR IDENTIFICATION PURPOSE ONLY

(摘錄自申請人於 8. 4. 2026 呈交的申請書)
(Extract from Applicant's Submission of 8.4.2026)

參考編號 REFERENCE No. A/YL-MP/411	繪圖 DRAWING A - 1
--------------------------------------	------------------------



位置圖及同類申請 LOCATION PLAN WITH SIMILAR APPLICATIONS

臨時商店及服務行業（五金貨品及家居用品零售商店）
的規劃許可續期（為期 5 年）
元朗米埔丈量約份第101約地段第20號餘段
RENEWAL OF PLANNING APPROVAL FOR TEMPORARY SHOP
AND SERVICES (METAL HARDWARE SHOP AND
HOUSEHOLD ITEM RETAIL STORE) FOR A PERIOD OF 5 YEARS
LOT 20 RP IN D.D. 101, MAI PO, YUEN LONG

SCALE 1 : 7 500 比例尺
米 METRES 100 0 100 200 300 METRES

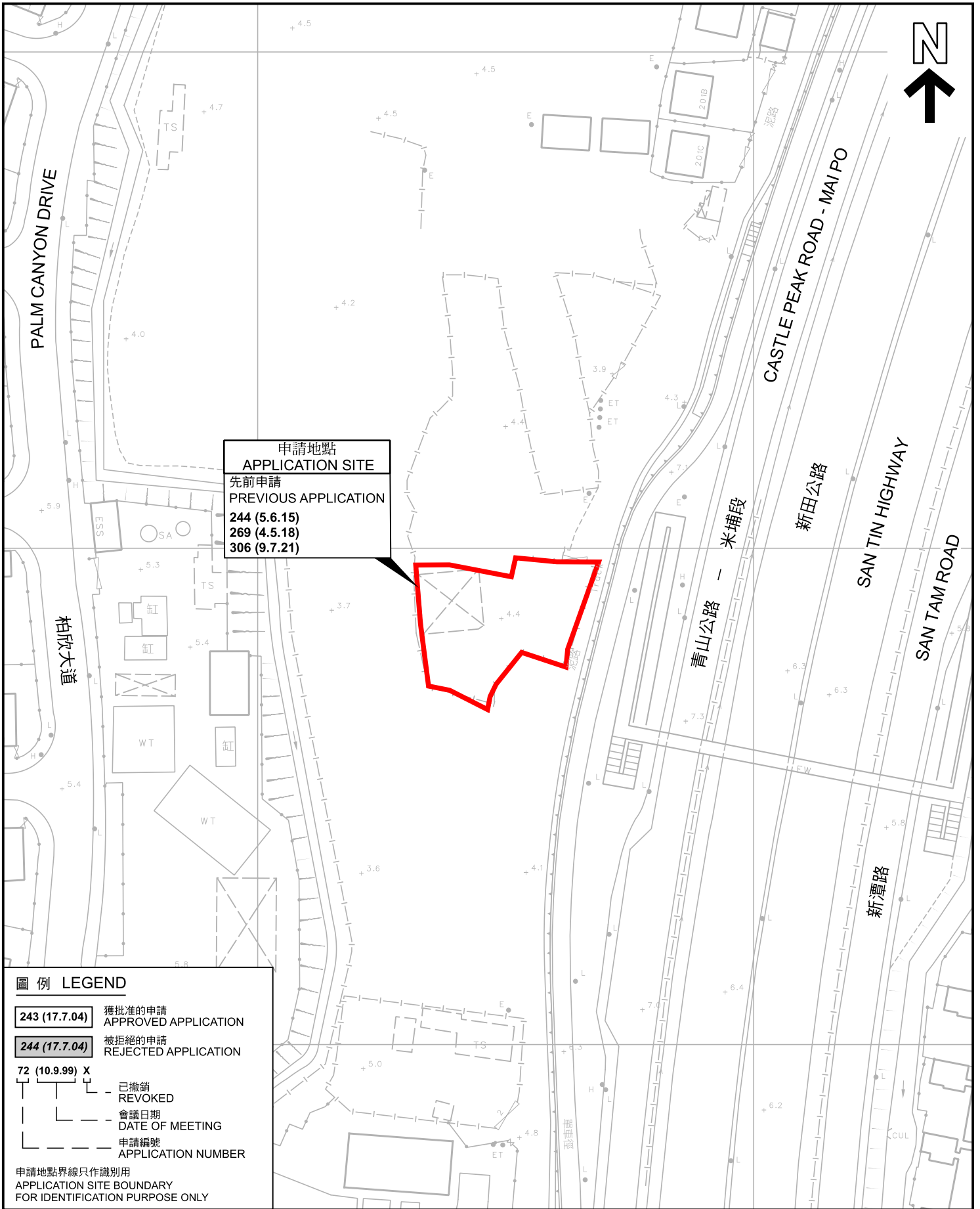


規劃署
Planning Department

參考編號
REFERENCE No.
AYL-MP/411

圖 PLAN
A-1a

本摘要圖於2026年5月8日擬備，
所根據的資料為於2026年3月6日
展示的分區計劃大綱圖編號 S/YL-MP/9
EXTRACT PLAN PREPARED ON 8.5.2026
BASED ON OUTLINE ZONING PLAN No.
S/YL-MP/9 EXHIBITED ON 6.3.2026



先前申請圖 PREVIOUS APPLICATION PLAN

臨時商店及服務行業（五金貨品及家居用品零售商店）
的規劃許可續期（為期 5 年）
元朗米埔丈量約份第101約地段第20號餘段
RENEWAL OF PLANNING APPROVAL FOR TEMPORARY SHOP
AND SERVICES (METAL HARDWARE SHOP AND
HOUSEHOLD ITEM RETAIL STORE) FOR A PERIOD OF 5 YEARS
LOT 20 RP IN D.D. 101, MAI PO, YUEN LONG

SCALE 1 : 1 000 比例尺

米 20 0 20 40 米
METRES METRES

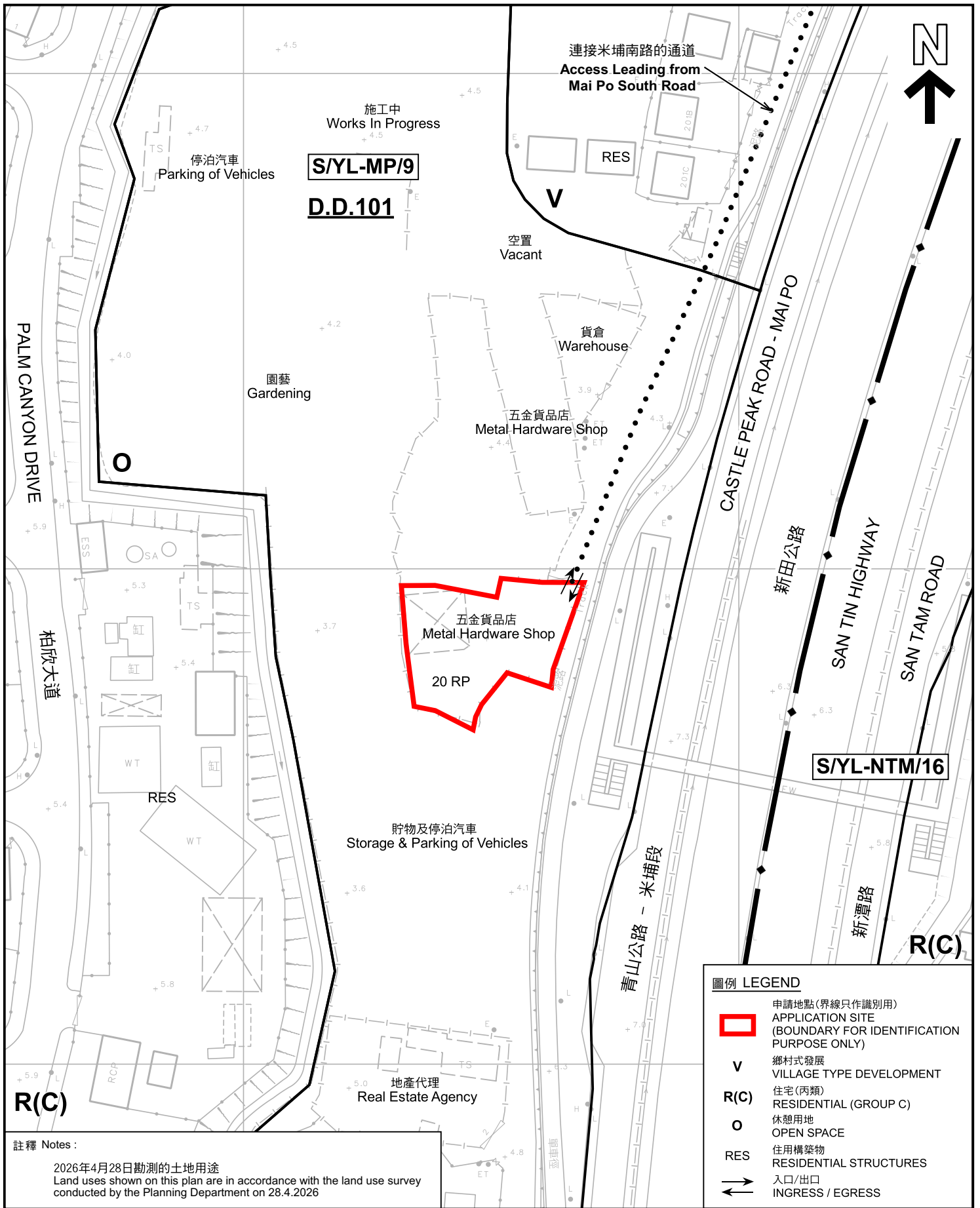


規劃署
Planning Department

參考編號
REFERENCE No.
A/YL-MP/411

圖 PLAN
A-1b

本摘要圖於2026年5月8日擬備，
所根據的資料為測量圖編號
2-SE-11D 及 12C
EXTRACT PLAN PREPARED ON 8.5.2026
BASED ON SURVEY SHEETS
No. 2-SE-11D & 12C



註釋 Notes :
 2026年4月28日勘測的土地用途
 Land uses shown on this plan are in accordance with the land use survey conducted by the Planning Department on 28.4.2026

圖例 LEGEND	
	申請地點(界線只作識別用) APPLICATION SITE (BOUNDARY FOR IDENTIFICATION PURPOSE ONLY)
V	鄉村式發展 VILLAGE TYPE DEVELOPMENT
R(C)	住宅(丙類) RESIDENTIAL (GROUP C)
O	休憩用地 OPEN SPACE
RES	住用構築物 RESIDENTIAL STRUCTURES
	入口/出口 INGRESS / EGRESS

本摘要圖於2026年5月8日擬備，
 所根據的資料為測量圖編號
 2-SE-11D 及 12C
 EXTRACT PLAN PREPARED ON 8.5.2026
 BASED ON SURVEY SHEETS No.
 2-SE-11D & 12C

平面圖 SITE PLAN

臨時商店及服務行業(五金貨品及家居用品零售商店)
 的規劃許可續期(為期 5 年)
 元朗米埔丈量約份第101約地段第20號餘段
 RENEWAL OF PLANNING APPROVAL FOR TEMPORARY SHOP
 AND SERVICES (METAL HARDWARE SHOP AND
 HOUSEHOLD ITEM RETAIL STORE) FOR A PERIOD OF 5 YEARS
 LOT 20 RP IN D.D. 101, MAI PO, YUEN LONG

SCALE 1 : 1 000 比例尺

米 METRES 20 0 20 40 米 METRES

	規劃署 Planning Department
參考編號 REFERENCE No. A/YL-MP/411	圖 PLAN A-2