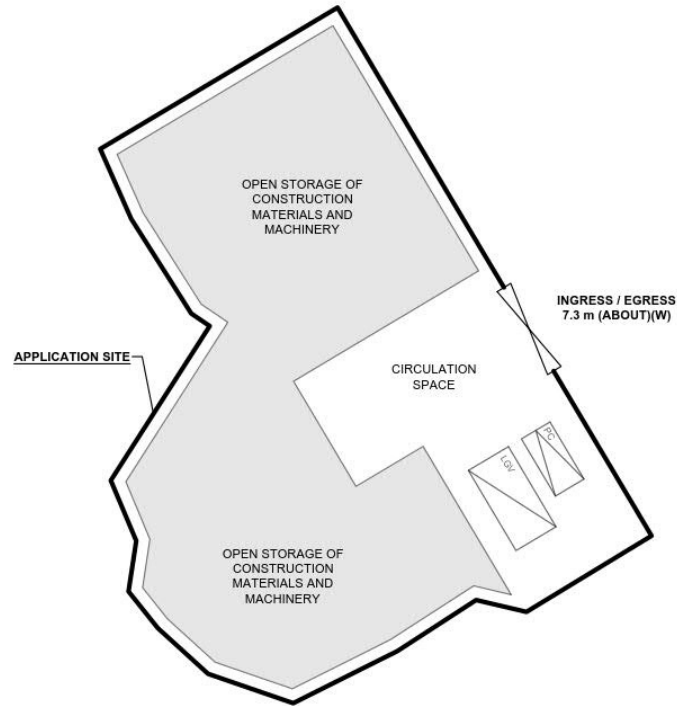


DEVELOPMENT PARAMETERS

APPLICATION SITE AREA : 1,270 m² (ABOUT)
 COVERED AREA : NOT APPLICABLE
 UNCOVERED AREA : 1,270 m² (ABOUT)
 OPEN STORAGE AREA : 827 m² (ABOUT)
 STACKING HEIGHT : NOT MORE THAN 3 m



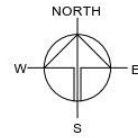
PARKING AND LOADING / UNLOADING PROVISIONS

NO. OF PRIVATE CAR PARKING SPACE : 1
 DIMENSION OF PARKING SPACE : 5 m (L) x 2.5 m (W)
 NO. OF L/U SPACE FOR LIGHT GOODS VEHICLE : 1
 DIMENSION OF L/U SPACE : 7 m (L) x 3.5 m (W)

*SITE BOUNDARY FOR IDENTIFICATION PURPOSE ONLY

LEGEND

- APPLICATION SITE
- OPEN STORAGE AREA
- PARKING SPACE (PC)
- LOADING / UNLOADING SPACE (LGV)
- INGRESS / EGRESS



PLANNING CONSULTANT



PROJECT

PROPOSED TEMPORARY OPEN STORAGE OF CONSTRUCTION MATERIALS AND MACHINERY AND ASSOCIATED FILLING OF LAND FOR A PERIOD OF 3 YEARS

SITE LOCATION

VARIOUS LOTS IN D.D. 107, FUNG KAT HEUNG, YUEN LONG, NEW TERRITORIES

SCALE

1:500 @ A1

DRAWN BY MN	DATE 27.1.2026
REVISED BY	DATE
APPROVED BY	DATE
DWG. TITLE LAYOUT PLAN	
DWG NO. PLAN 5	VER. 001

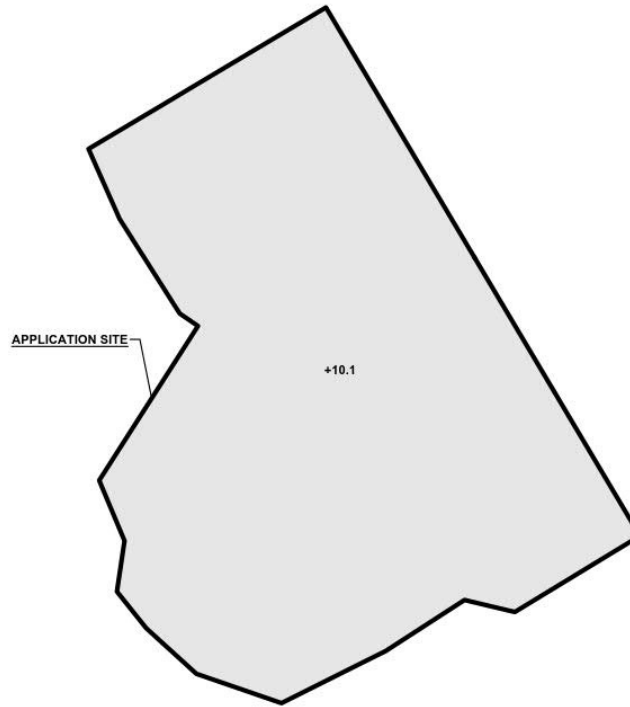
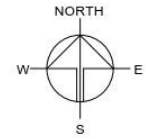
(摘錄自申請人於 3. 3. 2026 呈交的申請書)
 (Extract from Applicant's
 Submission of 3.3.2026)

參考編號
 REFERENCE No.
 A/YL-KTN/1216

繪圖
 DRAWING
 A - 1

EXISTING FILLED AREA OF THE APPLICATION SITE

APPLICATION SITE AREA : 1,270 m² (ABOUT)
 PROPOSED LAND FILLING AREA : 1,270 m² (ABOUT)
 DEPTH OF LAND FILLING : NOT MORE THAN 0.2 m
 EXISTING SITE LEVELS : +10.1 mPD (ABOUT)
 MATERIAL OF LAND FILLING : CONCRETE
 USE : OPEN STORAGE AREA AND AND CIRCULATION SPACE



SITE LEVELS ARE FOR REFERENCE ONLY.

*SITE BOUNDARY FOR IDENTIFICATION PURPOSE ONLY

LEGEND

-  APPLICATION SITE
-  EXISTING FILLED AREA
- +11.1** SITE LEVEL

PLANNING CONSULTANT



PROJECT

PROPOSED TEMPORARY OPEN STORAGE OF CONSTRUCTION MATERIALS AND MACHINERY AND ASSOCIATED FILLING OF LAND FOR A PERIOD OF 3 YEARS

SITE LOCATION

VARIOUS LOTS IN D.D. 107, FUNG KAT HEUNG, YUEN LONG, NEW TERRITORIES

SCALE

1:500 @ A1

DRAWN BY	DATE
MN	27.1.2026
REVISED BY	DATE
APPROVED BY	DATE

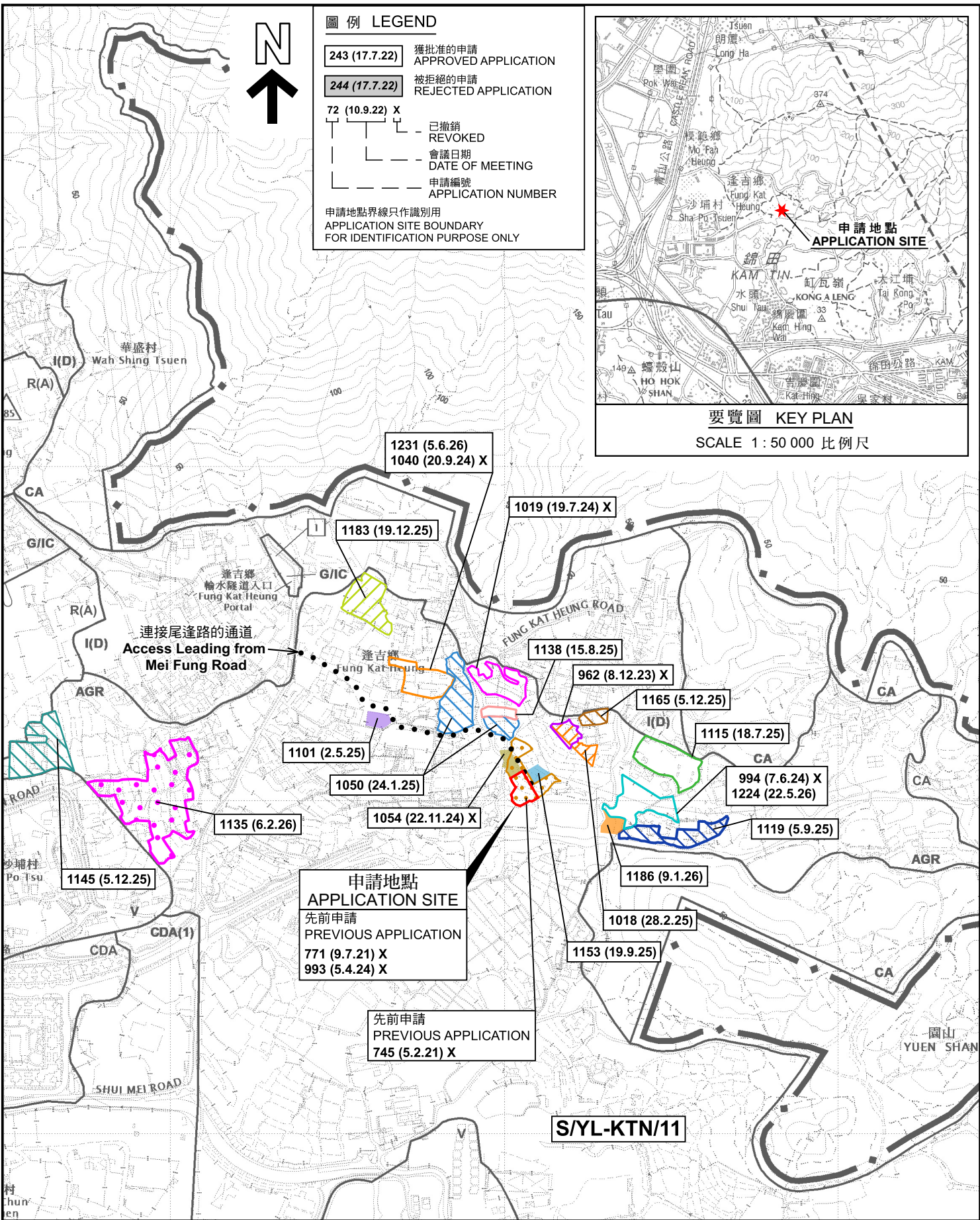
DWG. TITLE
FILLING OF LAND

DWG NO. PLAN 6	VER. 001
-------------------	-------------

(摘錄自申請人於 3. 3. 2026 呈交的申請書)
 (Extract from Applicant's
 Submission of 3.3.2026)

參考編號
 REFERENCE No.
 A/YL-KTN/1216

繪圖
 DRAWING
 A - 2



位置圖 LOCATION PLAN

臨時露天存放建築材料和機械及相關的填土工程(為期3年)
元朗錦田北達吉鄉丈量約份第107約多個地段
TEMPORARY OPEN STORAGE OF
CONSTRUCTION MATERIALS AND MACHINERIES AND
ASSOCIATED FILLING OF LAND FOR A PERIOD OF 3 YEARS
VARIOUS LOTS IN D.D.107, FUNG KAT HEUNG,
KAM TIN NORTH, YUEN LONG

SCALE 1 : 7 500 比例尺
METRES 100 0 100 200 300 METRES

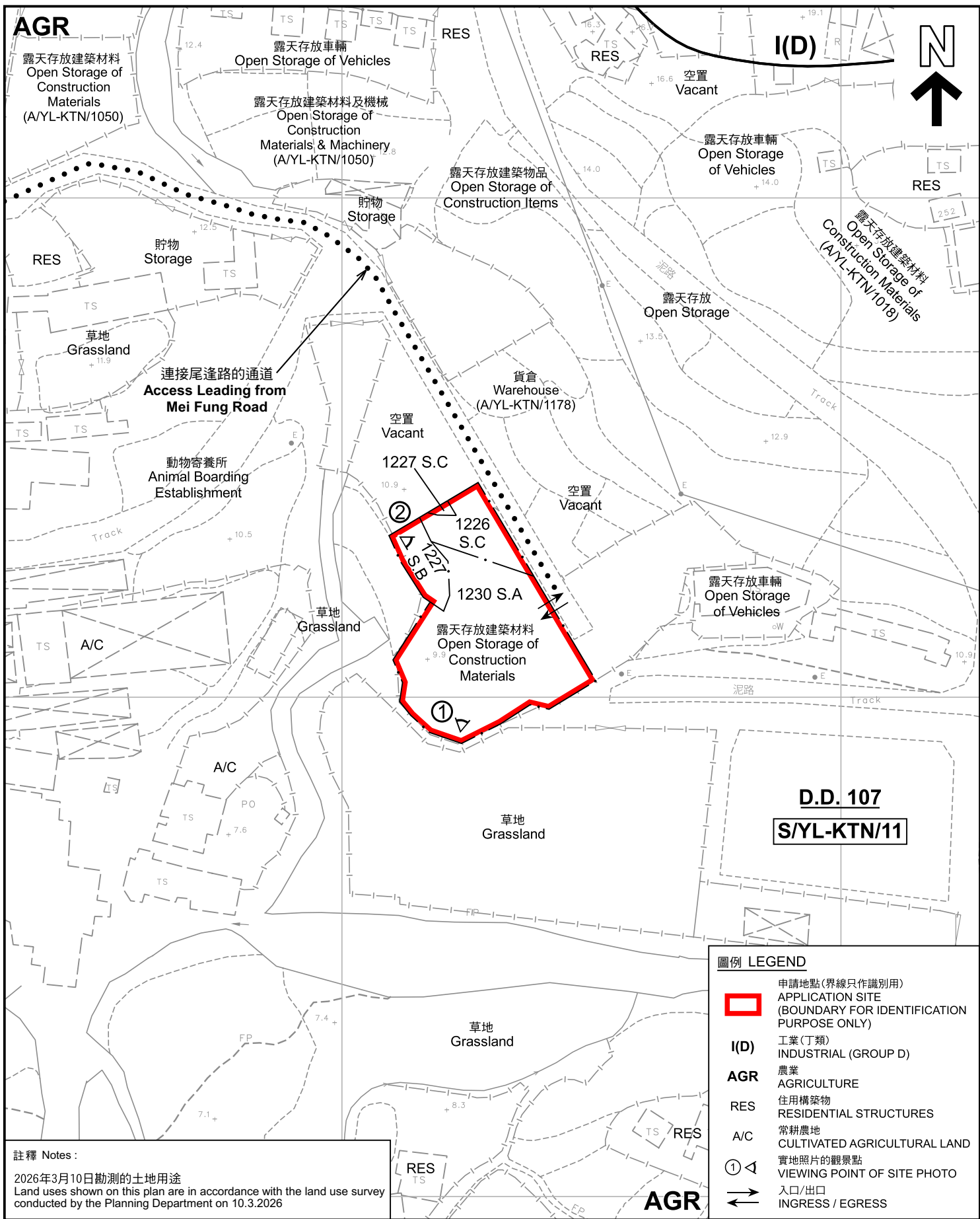


規劃署
Planning Department

參考編號
REFERENCE No.
A/YL-KTN/1216

圖 PLAN
A-1

本摘要圖於2026年6月16日擬備，
所根據的資料為於2023年12月5日
核准的分區計劃大綱圖編號 S/YL-KTN/11
EXTRACT PLAN PREPARED ON 16.6.2026
BASED ON OUTLINE ZONING PLAN No.
S/YL-KTN/11 APPROVED ON 5.12.2023



註釋 Notes :
 2026年3月10日勘測的土地用途
 Land uses shown on this plan are in accordance with the land use survey conducted by the Planning Department on 10.3.2026

圖例 LEGEND

- 申請地點(界線只作識別用)
APPLICATION SITE (BOUNDARY FOR IDENTIFICATION PURPOSE ONLY)
- I(D)** 工業(丁類)
INDUSTRIAL (GROUP D)
- AGR** 農業
AGRICULTURE
- RES** 住用構築物
RESIDENTIAL STRUCTURES
- A/C** 常耕農地
CULTIVATED AGRICULTURAL LAND
- ① ◁ 實地照片的觀景點
VIEWING POINT OF SITE PHOTO
- ↔ 入口/出口
INGRESS / EGRESS

本摘要圖於2026年6月16日擬備，
 所根據的資料為測量圖編號
 6-NE-2C
 EXTRACT PLAN PREPARED ON 16.6.2026
 BASED ON SURVEY SHEET No.
 6-NE-2C

平面圖 SITE PLAN

臨時露天存放建築材料和機械及相關的填土工程(為期3年)
 元朗錦田北達吉鄉丈量約份第107約多個地段
 TEMPORARY OPEN STORAGE OF
 CONSTRUCTION MATERIALS AND MACHINERIES AND
 ASSOCIATED FILLING OF LAND FOR A PERIOD OF 3 YEARS
 VARIOUS LOTS IN D.D.107, FUNG KAT HEUNG,
 KAM TIN NORTH, YUEN LONG

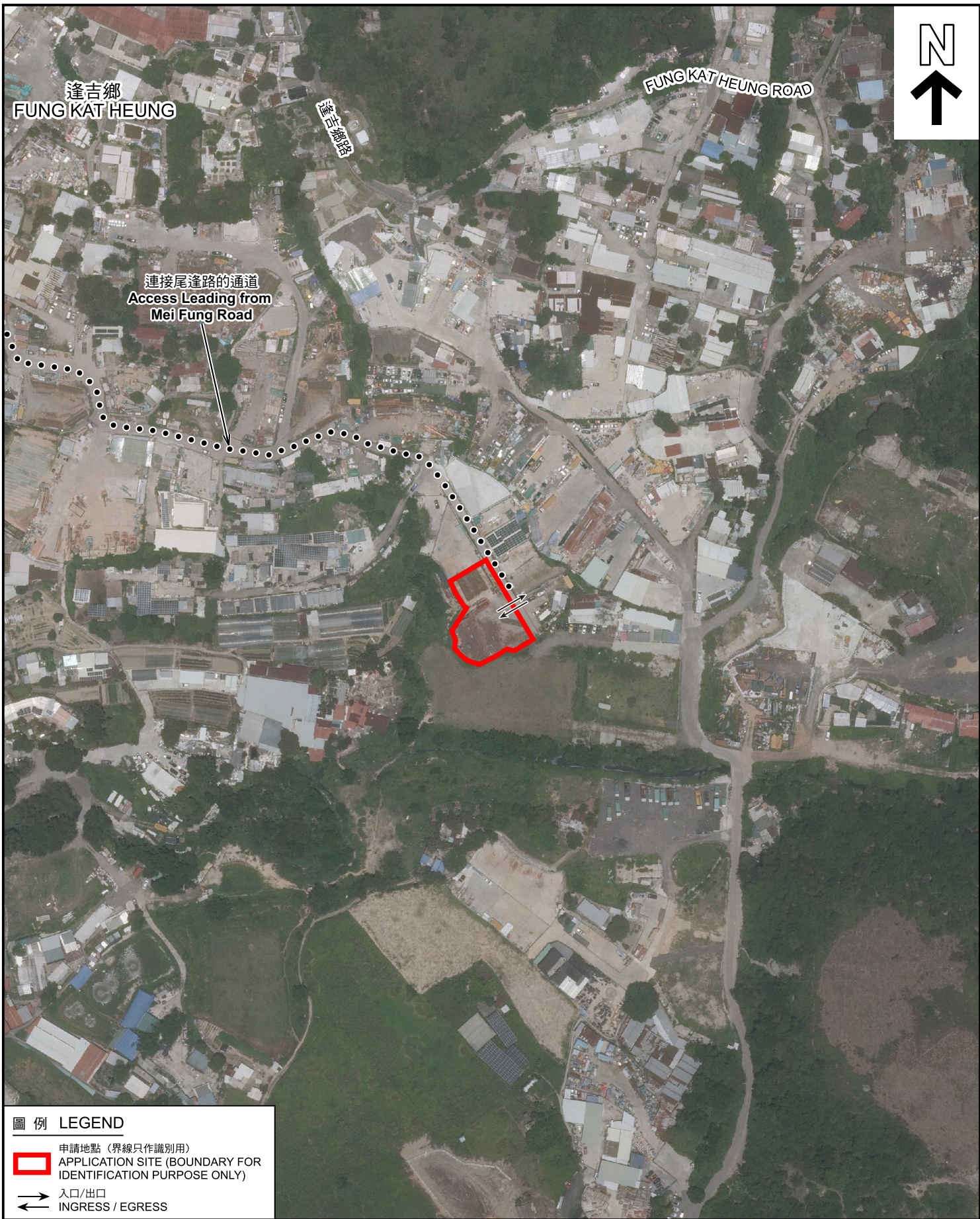
SCALE 1 : 1 000 比例尺

米 METRES 20 0 20 40 米 METRES

規劃署
 Planning Department

參考編號 REFERENCE No.
A/YL-KTN/1216

圖 PLAN
A-2



圖例 LEGEND

-  申請地點 (界線只作識別用)
APPLICATION SITE (BOUNDARY FOR IDENTIFICATION PURPOSE ONLY)
-  入口/出口
INGRESS / EGRESS

航攝照片 AERIAL PHOTO

本摘要圖於2026年6月16日擬備，
所根據的資料為地政總署於2025年6月10日
拍得的航攝照片編號 E257810C
EXTRACT PLAN PREPARED ON 16.6.2026
BASED ON AERIAL PHOTO No.
E257810C TAKEN ON 10.6.2025
BY LANDS DEPARTMENT

臨時露天存放建築材料和機械及相關的填土工程 (為期3年)
元朗錦田北逢吉鄉丈量約份第107約多個地段
TEMPORARY OPEN STORAGE OF
CONSTRUCTION MATERIALS AND MACHINERIES AND
ASSOCIATED FILLING OF LAND FOR A PERIOD OF 3 YEARS
VARIOUS LOTS IN D.D.107, FUNG KAT HEUNG,
KAM TIN NORTH, YUEN LONG



規畫署
Planning Department

參考編號
REFERENCE No.
AYL-KTN/1216

圖 PLAN
A-3



申請地點界線只作識別用 APPLICATION SITE BOUNDARY FOR IDENTIFICATION PURPOSE ONLY

實地照片 SITE PHOTOS

本圖於2026年6月16日擬備，所根據的資料為攝於2026年3月10日的實地照片
 PLAN PREPARED ON 16.6.2026
 BASED ON SITE PHOTOS
 TAKEN ON 10.3.2026

臨時露天存放建築材料和機械及相關的填土工程(為期3年)
 元朗錦田北達吉鄉丈量約份第107約多個地段
 TEMPORARY OPEN STORAGE OF
 CONSTRUCTION MATERIALS AND MACHINERIES AND
 ASSOCIATED FILLING OF LAND FOR A PERIOD OF 3 YEARS
 VARIOUS LOTS IN D.D.107, FUNG KAT HEUNG,
 KAM TIN NORTH, YUEN LONG



規劃署
 Planning Department

參考編號
 REFERENCE No.
A/YL-KTN/1216

圖 PLAN
A-4