

This drawing and the contents herein are the copyright of LWK & Partners (HK) Ltd.
No part of the drawing and the design contained herein may be reproduced without the prior written consent of a director of LWK & Partners (HK) Ltd.
Do not take measurements directly from this drawing.
Check and verify all dimensions on site.
Read this drawing in conjunction with the specifications and all other related drawings.
Notify the Architect immediately of any discrepancy found herein.
Client

Project
15-15A, 17, 19, 23 SAIGON STREET

Drawing Title
BASEMENT FLOOR PLAN

Job No.	Drawing No.	Revision No.
		02
Scale	Date	CAD Ref.
1:100	OCT 2021	
Drawn	Checked	Approved

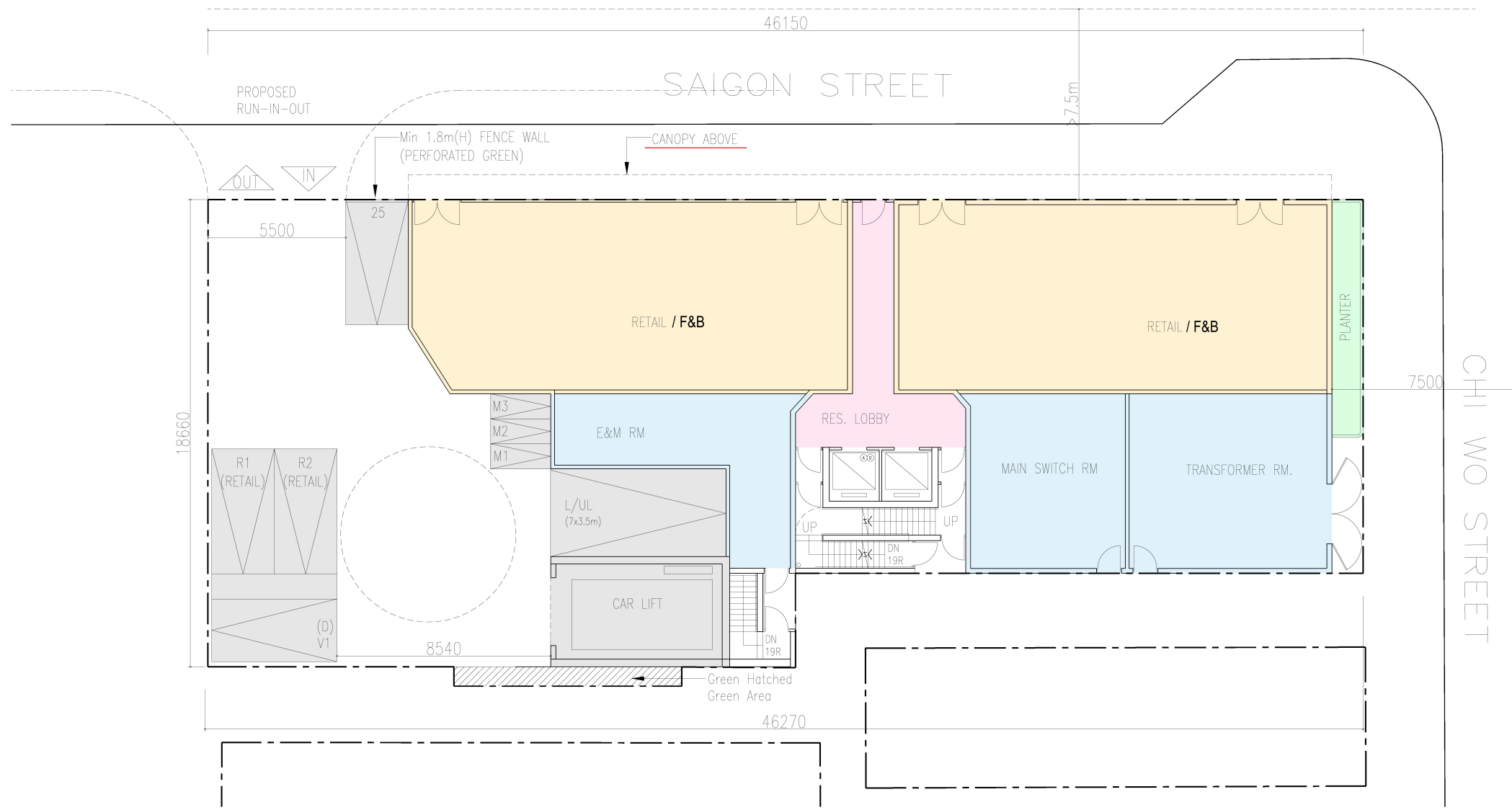
lwk&partners
architects

15/F, North Tower, World Finance Centre, Harbour City, Tsim Sha Tsui, Kowloon.
T: 852-2574 1833 F: 852-2572 4908 E: lwk@lwkpa.com
梁廣華建築師(香港)事務所有限公司
九龍尖沙咀海港城環球金融中心15樓

(資料來源: 由申請人提供)
(Source : submitted by the Applicant)

參考編號
REFERENCE No.
A/K2/220

繪圖
DRAWING
A - 1



- This drawing and the contents herein are the copyright of LWK & Partners (HK) Ltd.
- No part of the drawing and the design contained herein may be reproduced without the prior written consent of a director of LWK & Partners (HK) Ltd.
- Do not take measurements directly from this drawing.
- Check and verify all dimensions on site.
- Read this drawing in conjunction with the specifications and all other related drawings.
- Notify the Architect immediately of any discrepancy found herein.

Client

Project
15-15A, 17, 19, 23 SAIGON STREET

Drawing Title
GROUND FLOOR PLAN

Job No.	Drawing No.	Revision No.
		03
Scale	Date	CAD Ref.
1:100	OCT 2021	
Drawn	Checked	Approved

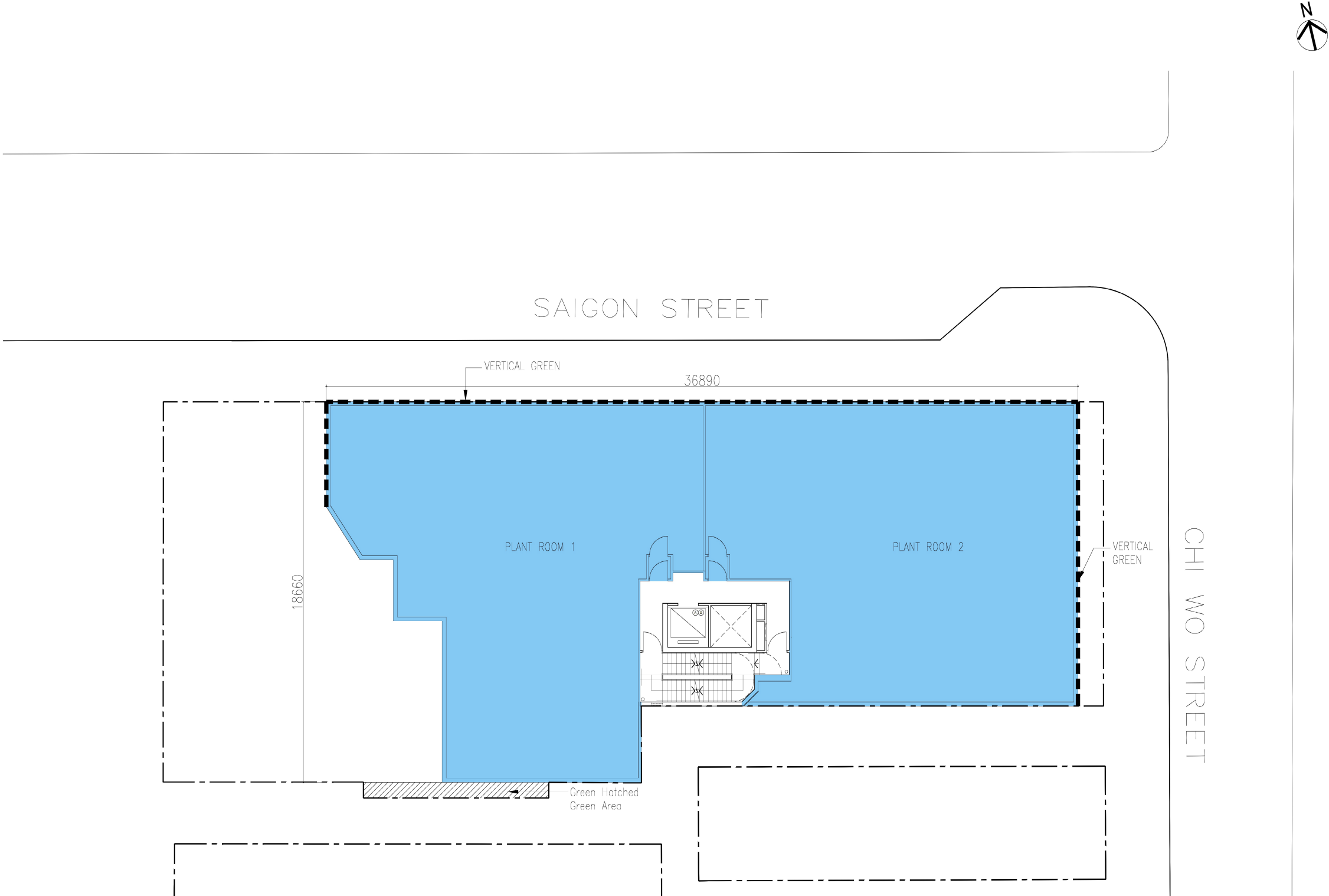
lwk&partners
a r c h i t e c t s

15/F, North Tower, World Finance Centre, Harbour City, Tsim Sha Tsui, Kowloon,
T: 852-2574 1633 F: 852-2572 4988 E: lwk@lwkp.com
設 計 建 築 師 (香 港) 事 務 所 有 限 公 司
九 龍 尖 沙 咀 海 港 城 環 球 金 融 中 心 北 座 15 樓

(資料來源：由申請人提供)
(Source : submitted by the Applicant)

參考編號
REFERENCE No.
A/K2/220

繪圖
DRAWING
A - 2



- This drawing and the contents herein are the copyright of LWK & Partners (HK) Ltd.
- No part of the drawing and the design contained herein may be reproduced without the prior written consent of a director of LWK & Partners (HK) Ltd.
- Do not take measurements directly from this drawing.
- Check and verify all dimensions on site.
- Read this drawing in conjunction with the specifications and all other related drawings.
- Notify the Architect immediately of any discrepancy found herein.

Client

Project
15-15A, 17, 19, 23 SAIGON STREET

Drawing Title
FIRST FLOOR PLAN

Job No.	Drawing No.	Revision No.
		02
Scale	Date	CAD Ref.
1:100	OCT 2021	
Drawn	Checked	Approved

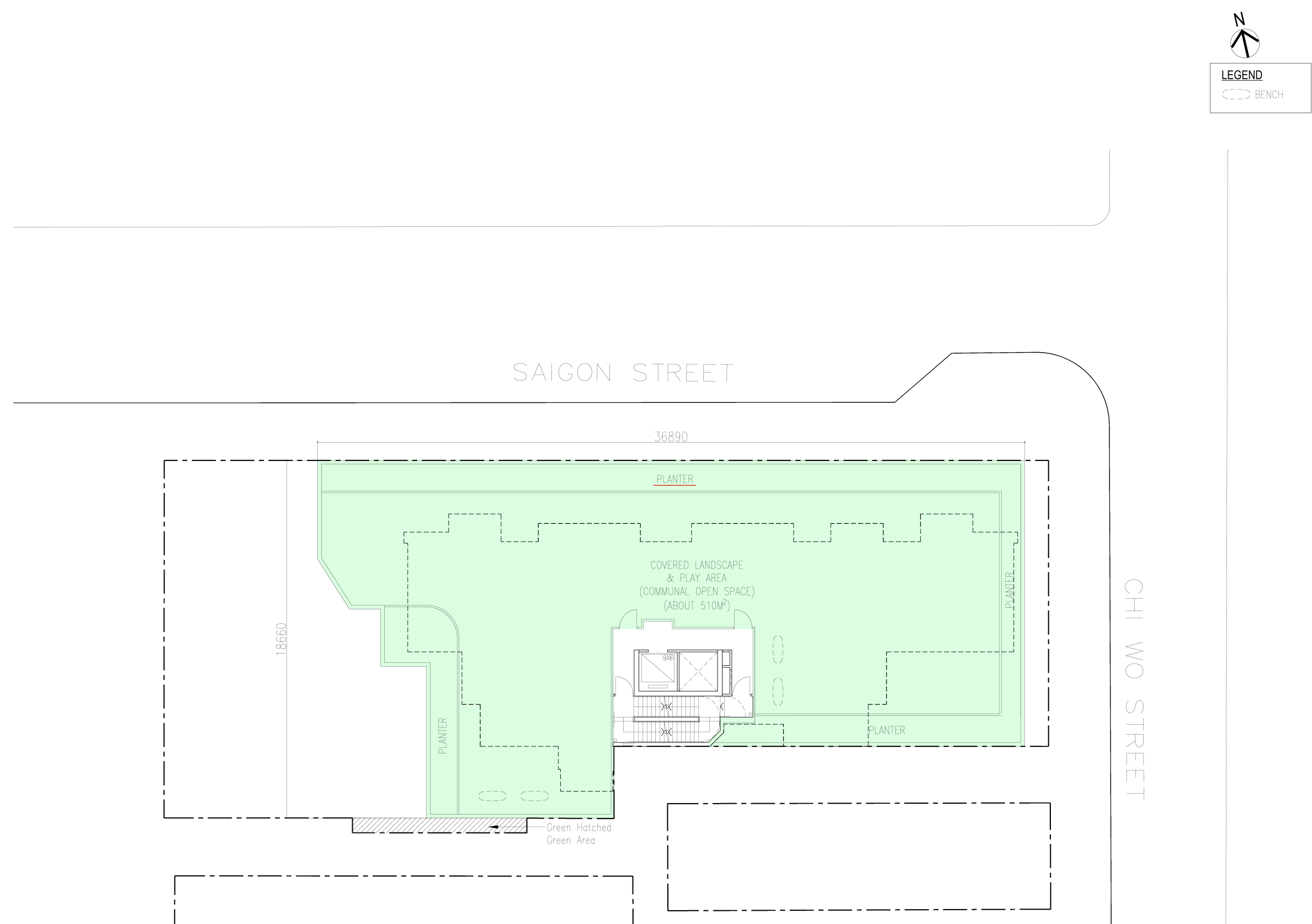
lwk&partners
a r c h i t e c t s

15/F, North Tower, World Finance Centre, Harbour City, Tsim Sha Tsui, Kowloon.
T: 852-2574 1633 F: 852-2572 4908 E: lwk@lwkp.com
匯業顧問建築師(香港)事務所有限公司
九龍尖沙咀海港城環球金融中心北座15樓

(資料來源: 由申請人提供)
(Source : submitted by the Applicant)

參考編號
REFERENCE No.
A/K2/220

繪圖
DRAWING
A - 3



- This drawing and the contents herein are the copyright of LWK & Partners (HK) Ltd.
- No part of the drawing and the design contained herein may be reproduced without the prior written consent of a director of LWK & Partners (HK) Ltd.
- Do not take measurements directly from this drawing.
- Check and verify all dimensions on site.
- Read this drawing in conjunction with the specifications and all other related drawings.
- Notify the Architect immediately of any discrepancy found herein.
Client

Project
15-15A, 17, 19, 23 SAIGON STREET

Drawing Title
SECOND FLOOR PLAN

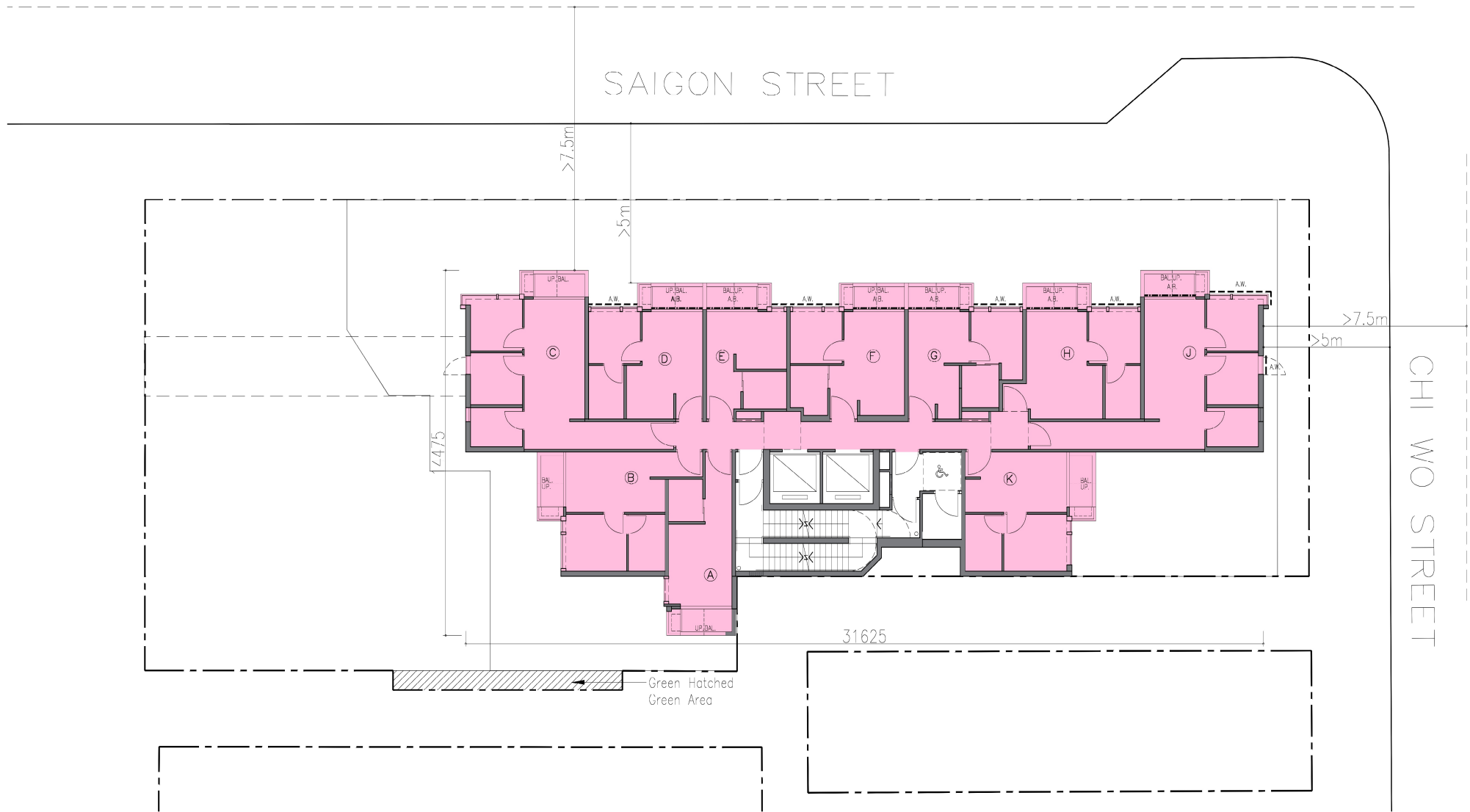
Job No.	Drawing No.	Revision No.
		03
Scale	Date	CAD Ref.
1:100	OCT 2021	
Drawn	Checked	Approved

lwk&partners
architects

15/F, North Tower, World Finance Centre, Harbour City, Tsim Sha Tsui, Kowloon.
T: 852-2574 1633 F: 852-2572 4908 E: lwk@lwkp.com
梁業經建築師(香港)事務所有限公司
九龍尖沙咀海濱城環球金融中心北座15樓

(資料來源: 由申請人提供)
(Source : submitted by the Applicant)

參考編號 REFERENCE No. A/K2/220	繪圖 DRAWING A - 4
-----------------------------------	------------------------



----- ACOUSTIC BALCONY (A.B)

Acoustic Balcony										
	FLAT A	FLAT B	FLAT C	FLAT D	FLAT E	FLAT F	FLAT G	FLAT H	FLAT J	FLAT K
3 / F										
4 / F										
5 / F										
6 / F										
7 / F										
8 / F										
9 / F										
10 / F										
11 / F										
12 / F										
13 / F									✓	
14 / F									✓	
15 / F									✓	
16 / F								✓	✓	
17 / F							✓	✓	✓	
18 / F					✓	✓	✓	✓	✓	
19 / F					✓	✓	✓	✓	✓	
20 / F					✓	✓	✓	✓	✓	
21 / F					✓	✓	✓	✓	✓	
22 / F				✓	✓	✓	✓	✓	✓	
23 / F				✓	✓	✓	✓	✓	✓	
24 / F				✓	✓	✓	✓	✓	✓	
25 / F				✓	✓	✓	✓	✓	✓	

----- ACOUSTIC WINDOW (A.W.)

Acoustic Window										
	FLAT A	FLAT B	FLAT C	FLAT D	FLAT E	FLAT F	FLAT G	FLAT H	FLAT J	FLAT K
3 / F									✓	
4 / F									✓	
5 / F									✓	
6 / F										
7 / F										
8 / F										
9 / F										
10 / F										
11 / F										
12 / F									✓	
13 / F									✓	
14 / F									✓	
15 / F								✓	✓	
16 / F								✓	✓	
17 / F							✓	✓	✓	
18 / F							✓	✓	✓	
19 / F					✓	✓	✓	✓	✓	
20 / F					✓	✓	✓	✓	✓	
21 / F					✓	✓	✓	✓	✓	
22 / F					✓	✓	✓	✓	✓	
23 / F					✓	✓	✓	✓	✓	
24 / F				✓	✓	✓	✓	✓	✓	
25 / F				✓	✓	✓	✓	✓	✓	

This drawing and the contents herein are the copyright of LWK & Partners (HK) Ltd.
No part of the drawing and the design contained herein may be reproduced without the prior written consent of a director of LWK & Partners (HK) Ltd.
Do not take measurements directly from this drawing.
Check and verify all dimensions on site.
Read the drawing in conjunction with the specifications and all other related drawings.
Notify the Architect immediately of any discrepancy found herein.
Client

Project
15-15A, 17, 19, 23 SAIGON STREET

Drawing Title
TYPICAL FLOOR PLAN

Job No.	Drawing No.	Revision No.
		02
Scale	Date	CAD Ref.
1:100	OCT 2021	
Drawn	Checked	Approved

lwk&partners
architects

15F, North Tower, World Finance Centre, Harbour City, Tsim Sha Tsui, Kowloon.
T: 852-2574 1633 F: 852-2572 4908 E: lwk@lwk.com
梁廣輝建築師(香港)事務所有限公司
九龍尖沙咀海港城環球金融中心北座15樓

(資料來源: 由申請人提供)
(Source : submitted by the Applicant)

參考編號
REFERENCE No.
A/K2/220

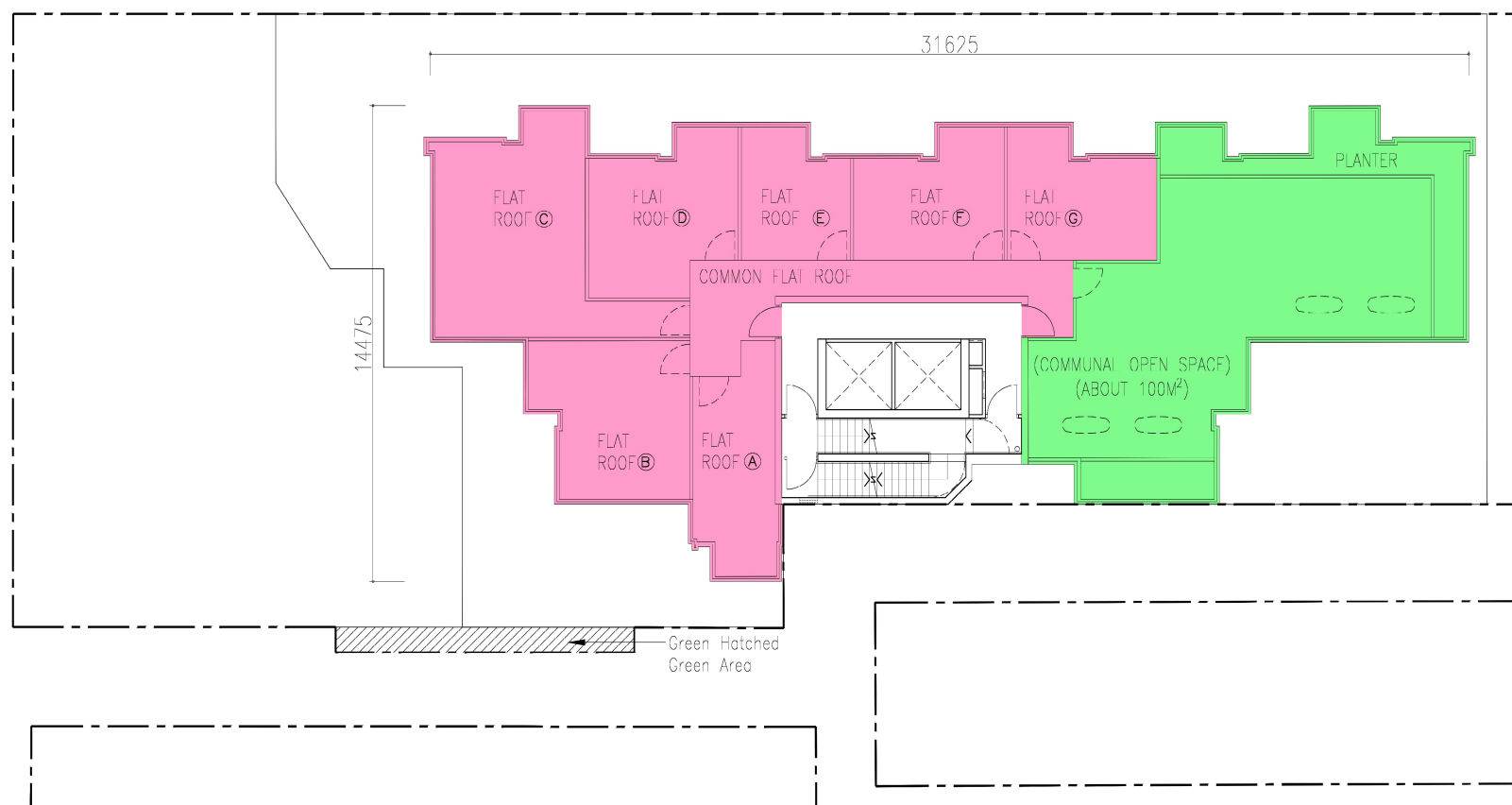
繪圖
DRAWING
A - 5



BENCH

SAIGON STREET

CHI WO STREET



- This drawing and the contents herein are the copyright of LWK & Partners (HK) Ltd.
- No part of the drawing and the design contained herein may be reproduced without the prior written consent of a director of LWK & Partners (HK) Ltd.
- Do not take measurements directly from this drawing.
- Check and verify all dimensions on site.
- Need this drawing in conjunction with the specifications and all other related drawings.
- Notify the Architect immediately of any discrepancy found herein.

Client

Project
15-15A, 17, 19, 23 SAIGON STREET

Drawing Title
ROOF PLAN

Job No.	Drawing No.	Revision No.
		02
Scale	Date	CAD Ref.
1:400	OCT 2021	
Drawn	Checked	Approved

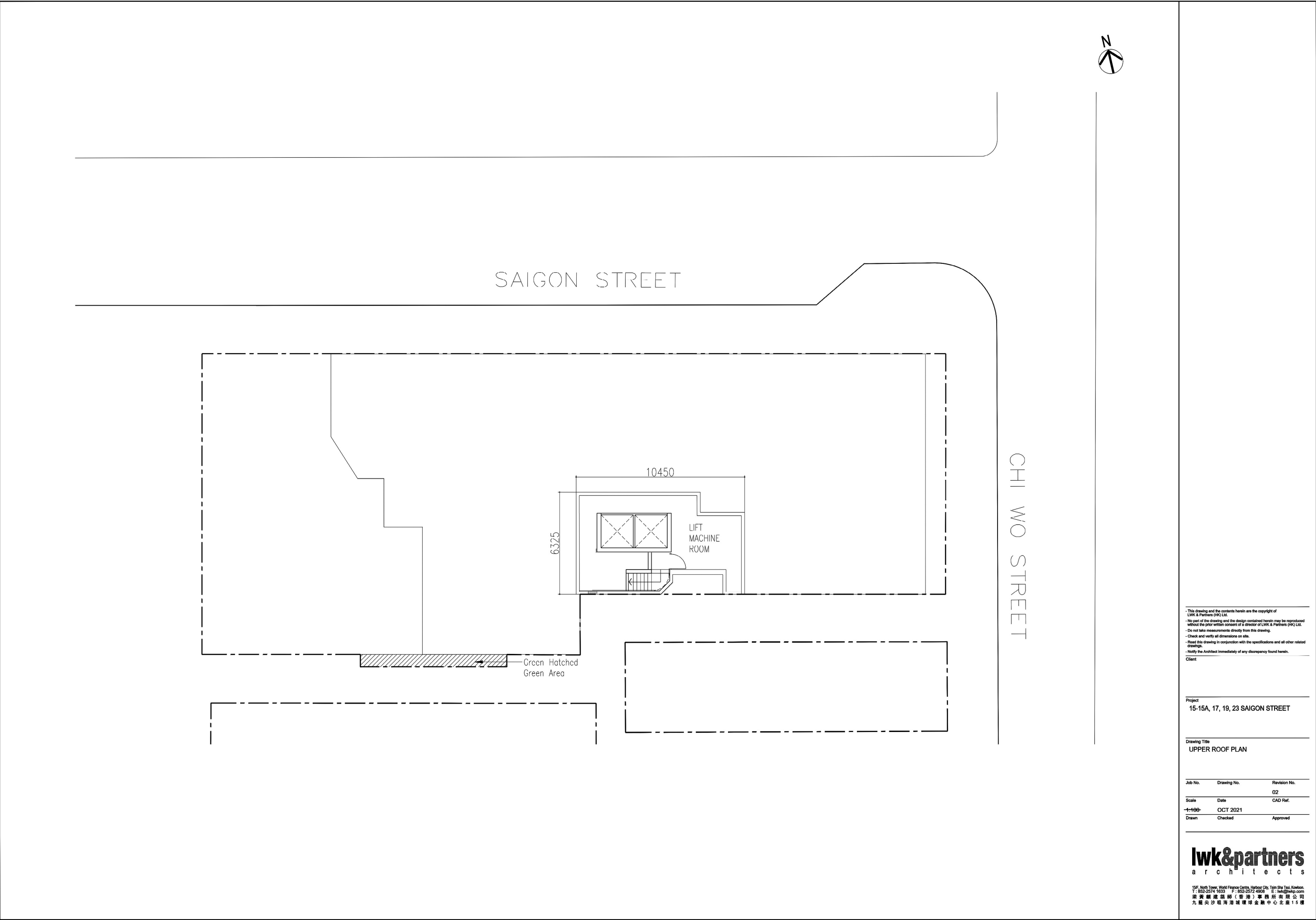
lwk&partners
a r c h i t e c t s

15F, North Tower, World Finance Centre, Harbour City, Tsim Sha Tsui, Kowloon.
T: 852-2574 1633 F: 852-2572 4908 E: lwk@lwkp.com
梁廣權建築師(香港)事務所有限公司
九龍尖沙咀海港城環球金融中心北座15樓

(資料來源：由申請人提供)
(Source : submitted by the Applicant)

參考編號
REFERENCE No.
A/K2/220

繪圖
DRAWING
A - 6



This drawing and the contents herein are the copyright of LWK & Partners (HK) Ltd.
No part of the drawing and the design contained herein may be reproduced without the prior written consent of a director of LWK & Partners (HK) Ltd.
Do not take measurements directly from this drawing.
Check and verify all dimensions on site.
Read this drawing in conjunction with the specifications and all other related drawings.
Notify the Architect immediately of any discrepancy found herein.

Client

Project
15-15A, 17, 19, 23 SAIGON STREET

Drawing Title
UPPER ROOF PLAN

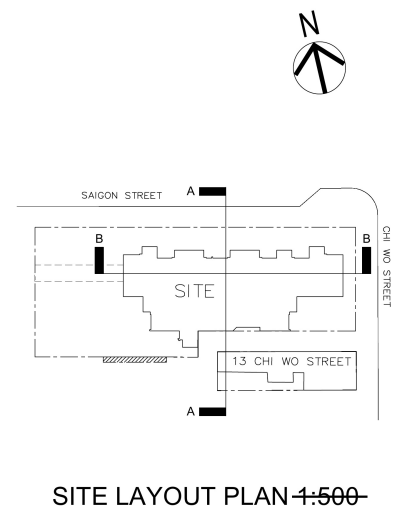
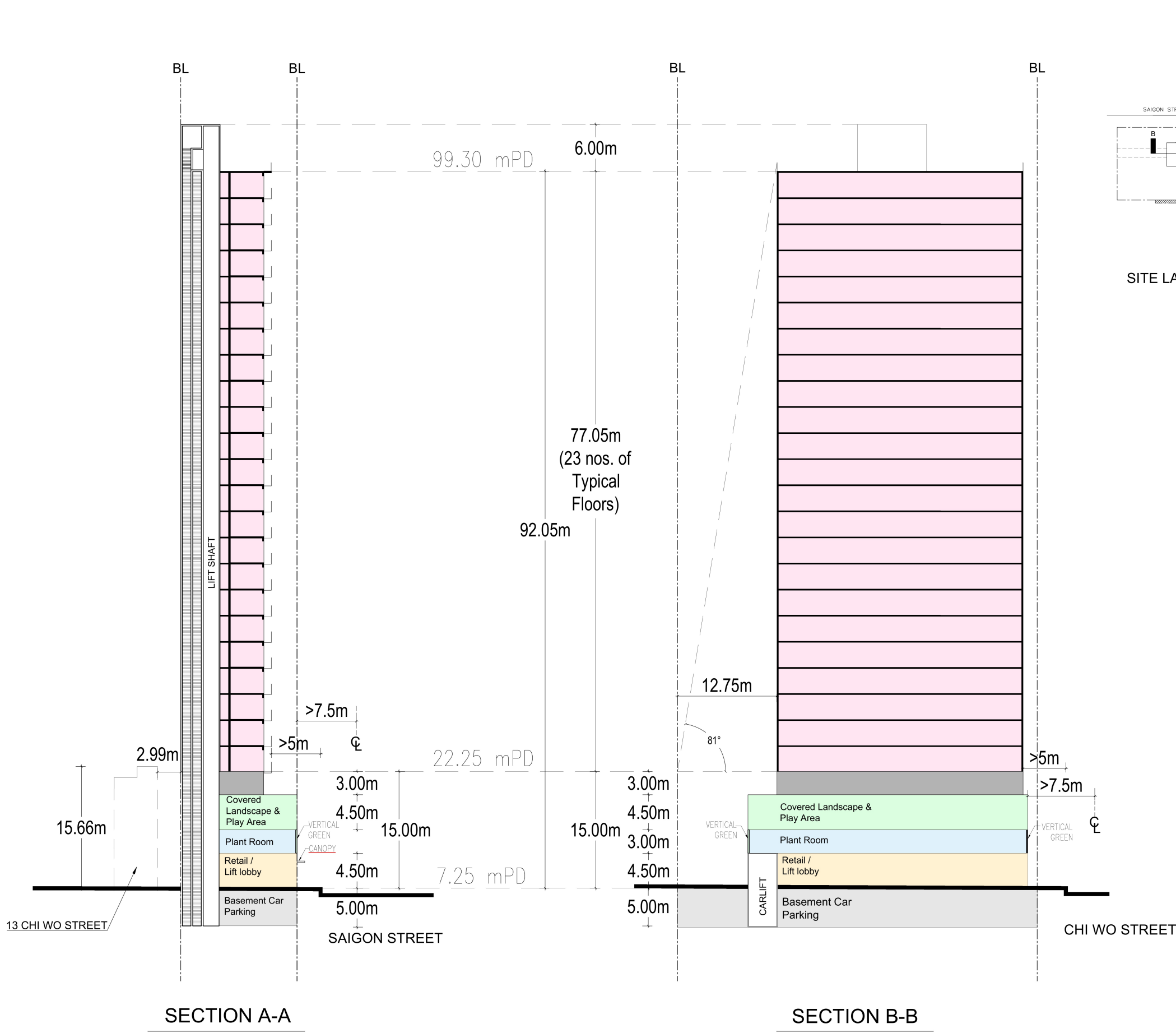
Job No.	Drawing No.	Revision No.
		02
Scale	Date	CAD Ref.
1:100	OCT 2021	
Drawn	Checked	Approved

lwk&partners
a r c h i t e c t s

15F, North Tower, World Finance Centre, Harbour City, Tsim Sha Tsui, Kowloon.
T: 852-2574 1633 F: 852-2572 4908 E: lwk@lwk.com
香港灣仔道15號環球金融中心北座15樓
九龍尖沙咀海港城環球金融中心北座15樓

(資料來源：由申請人提供)
(Source : submitted by the Applicant)

參考編號 REFERENCE No. A/K2/220	繪圖 DRAWING A - 7
-----------------------------------	------------------------



This drawing and the contents herein are the copyright of LWK & Partners (HK) Ltd.
No part of the drawing and the design contained herein may be reproduced without the prior written consent of a director of LWK & Partners (HK) Ltd.
Do not take measurements directly from this drawing.
Check and verify all dimensions on site.
Read this drawing in conjunction with the specifications and all other related drawings.
Notify the Architect immediately of any discrepancy found herein.
Client

Project
15-15A, 17, 19, 23 SAIGON STREET

Drawing Title
SECTION A & B

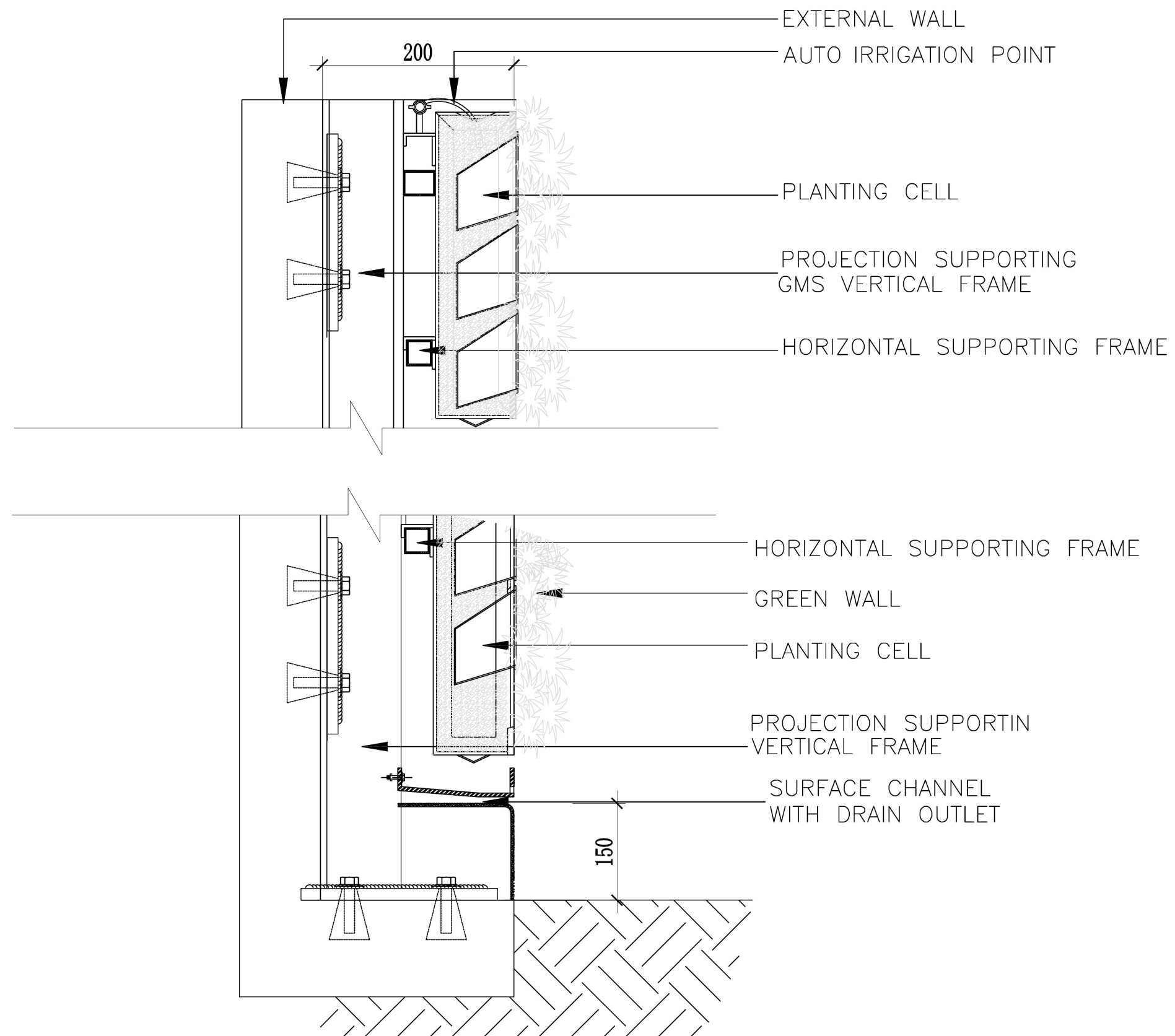
Job No.	Drawing No.	Revision No.
		02
Scale	Date	CAD Ref.
1:250	SEP 2021	
Drawn	Checked	Approved

lwk&partners
architects

15/F, North Tower, World Finance Centre, Harbour City, Tsim Sha Tsui, Kowloon.
T: 852-2574 1833 F: 852-2572 4908 E: lwk@lwkpa.com
梁廣德建築師(香港)事務所有限公司
九龍尖沙咀海運城環球金融中心北座15樓

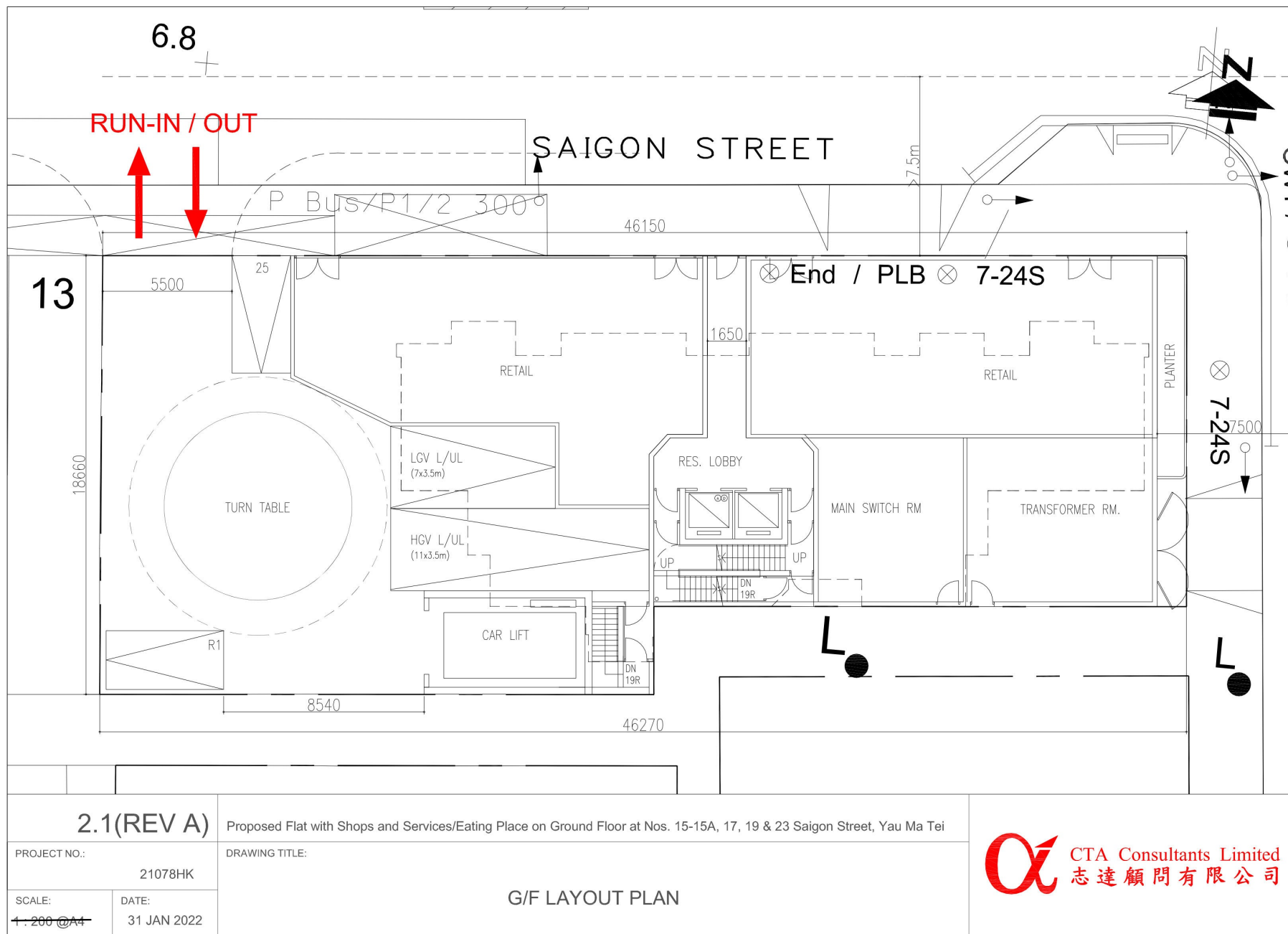
(資料來源: 由申請人提供)
(Source : submitted by the Applicant)

參考編號 REFERENCE No. A/K2/220	繪圖 DRAWING A - 8
-----------------------------------	------------------------



VERTICAL GREEN - TYPICAL SECTION

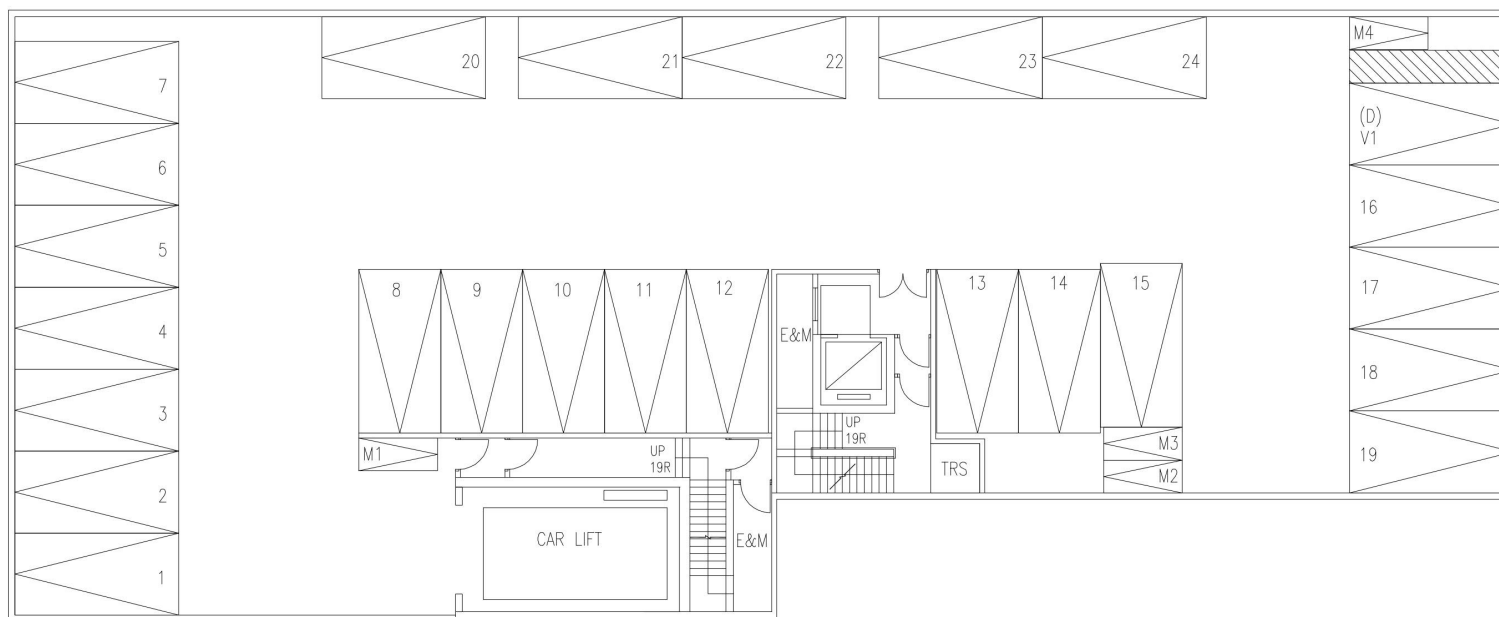
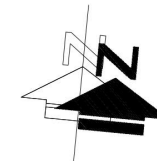
**LWK
+PARTNERS**



(資料來源:由申請人提供)
(Source : submitted by the Applicant)

參考編號
REFERENCE No.
A/K2/220

繪圖
DRAWING
A - 10



2.2

Proposed Flat with Shops and Services/Eating Place on Ground Floor at Nos. 15-15A, 17, 19 & 23 Saigon Street, Yau Ma Tei

PROJECT NO.:

21078HK

DRAWING TITLE:

B/F LAYOUT PLAN

SCALE:

1:200 @A4

DATE:

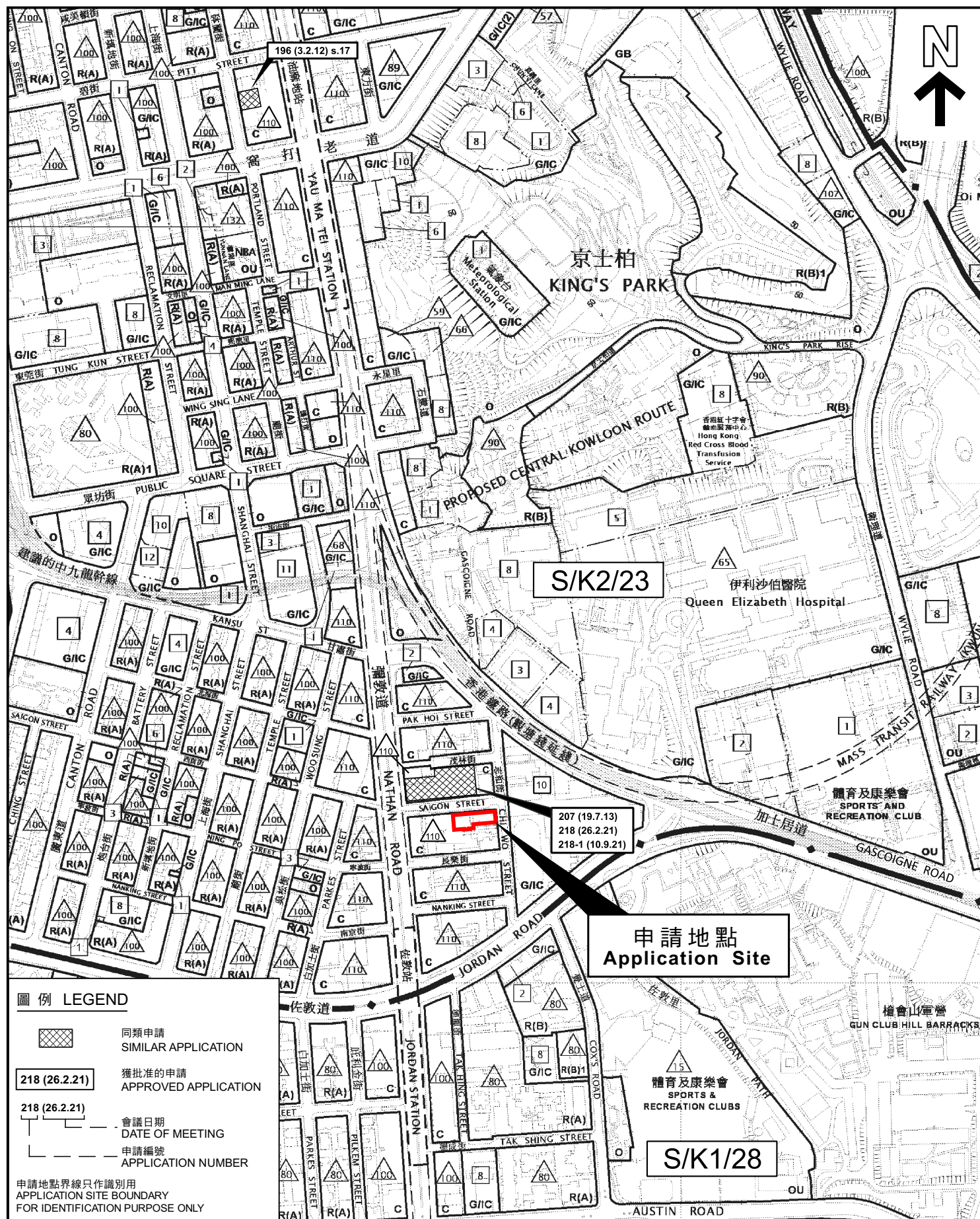
31 JAN 2022

 CTA Consultants Limited
志達顧問有限公司

(資料來源:由申請人提供)
(Source : submitted by the Applicant)

參考編號
REFERENCE No.
A/K2/220

繪圖
DRAWING
A - 11



位置圖 LOCATION PLAN

擬議綜合發展以作分層住宅及商店及服務行業/食肆用途
油麻地西貢街15-15A、17、19及23號
PROPOSED COMPOSITE DEVELOPMENT WITH FLAT AND
SHOP AND SERVICES / EATING PLACE USES
15-15A, 17, 19 AND 23 SAIGON STREET, YAU MA TEI

SCALE 1:5 000 比例尺

100 0 100 200
METRES METRES

規劃署
PLANNING
DEPARTMENT



參考編號
REFERENCE No.

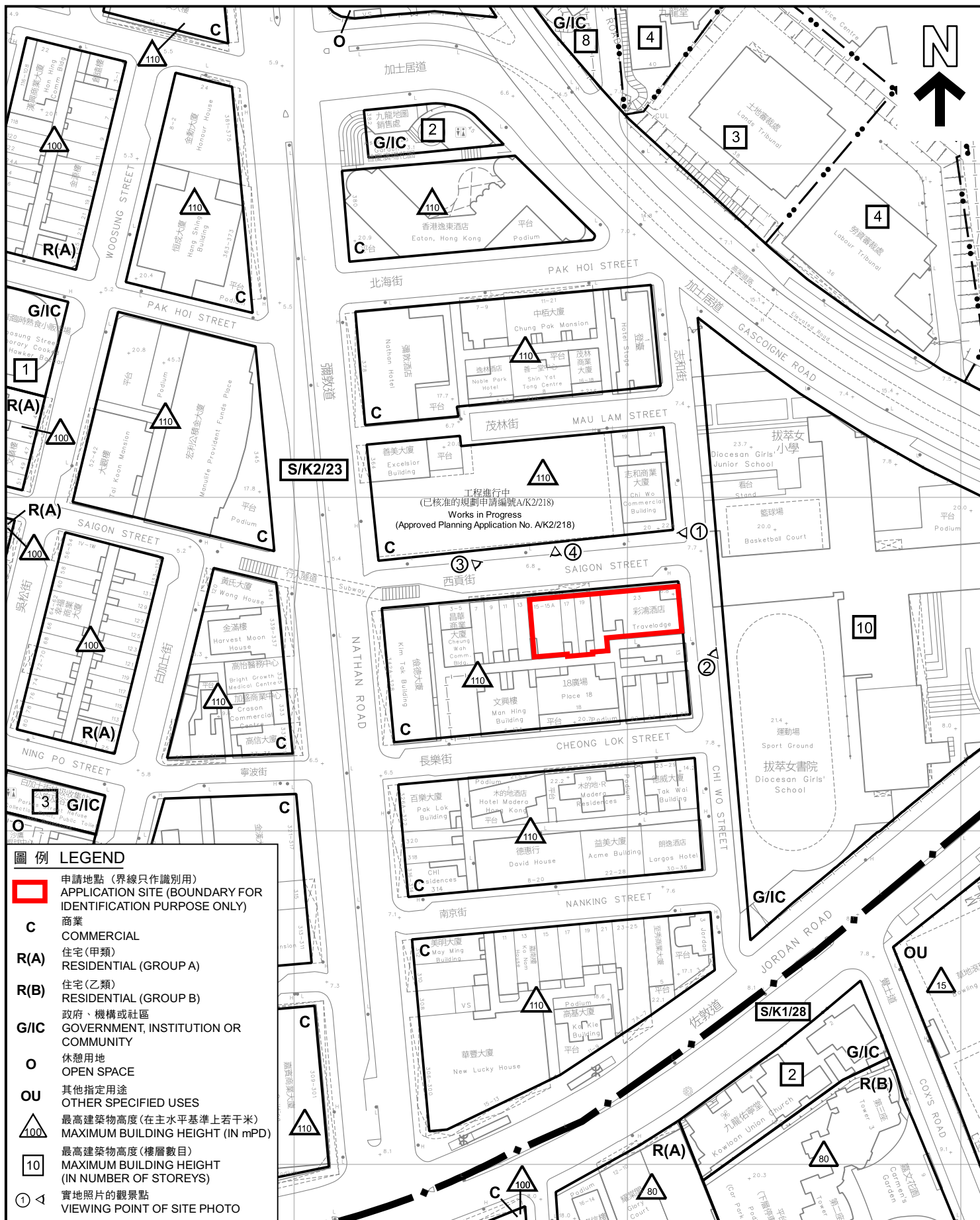
A/K2/220

圖 PLAN

A - 1

本摘要圖於2021年11月26日擬備，所根據的資料
為於2013年12月3日核准的分區計劃大綱圖編號
S/K1/28，以及於2021年10月15日展示的分區計
劃大綱圖編號S/K2/23

EXTRACT PLAN PREPARED ON 26.11.2021
BASED ON OUTLINE ZONING PLANS No.
S/K1/28 APPROVED ON 3.12.2013 AND
S/K2/23 EXHIBITED ON 15.10.2021



平面圖 SITE PLAN

擬議綜合發展以作分層住宅及商店及服務行業/食肆用途
油麻地西貢街15-15A、17、19及23號

PROPOSED COMPOSITE DEVELOPMENT WITH FLAT AND
SHOP AND SERVICES / EATING PLACE USES
15-15A, 17, 19 AND 23 SAIGON STREET, YAU MA TEI

SCALE 1:1 500 比例尺

米 25 0 25 50 米
METRES

規劃署
PLANNING
DEPARTMENT



參考編號
REFERENCE No.

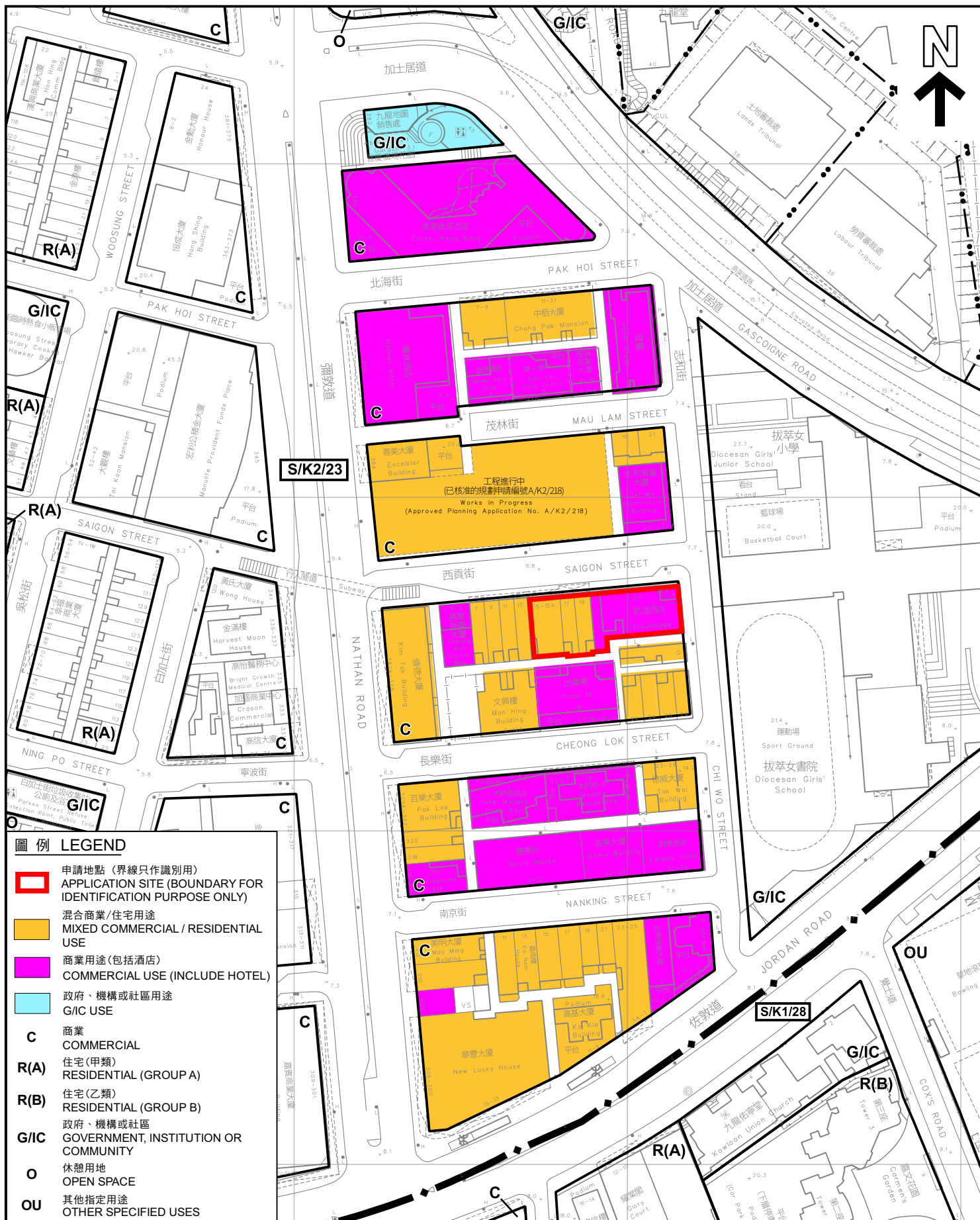
A/K2/220

圖 PLAN

A - 2

本摘要圖於2022年2月10日擬備，
所根據的資料為測量圖編號
11-NW-24B

EXTRACT PLAN PREPARED ON
10.2.2022
BASED ON SURVEY SHEET No.
11-NW-24B



本摘要圖於2022年2月11日擬備，
所根據的資料為測量圖編號
11-NW-24B

EXTRACT PLAN PREPARED ON
11.2.2022
BASED ON SURVEY SHEET No.
11-NW-24B

周邊現有用途
EXISTING USES IN THE SURROUNDING AREAS
擬議綜合發展以作分層住宅及商店及服務行業/食肆用途
油麻地西貢街15-15A、17、19及23號
PROPOSED COMPOSITE DEVELOPMENT WITH FLAT AND
SHOP AND SERVICES / EATING PLACE USES
15-15A, 17, 19 AND 23 SAIGON STREET, YAU MA TEI

SCALE 1:1 500 比例尺
米 25 0 25 50 米
METRES

規劃署
PLANNING
DEPARTMENT

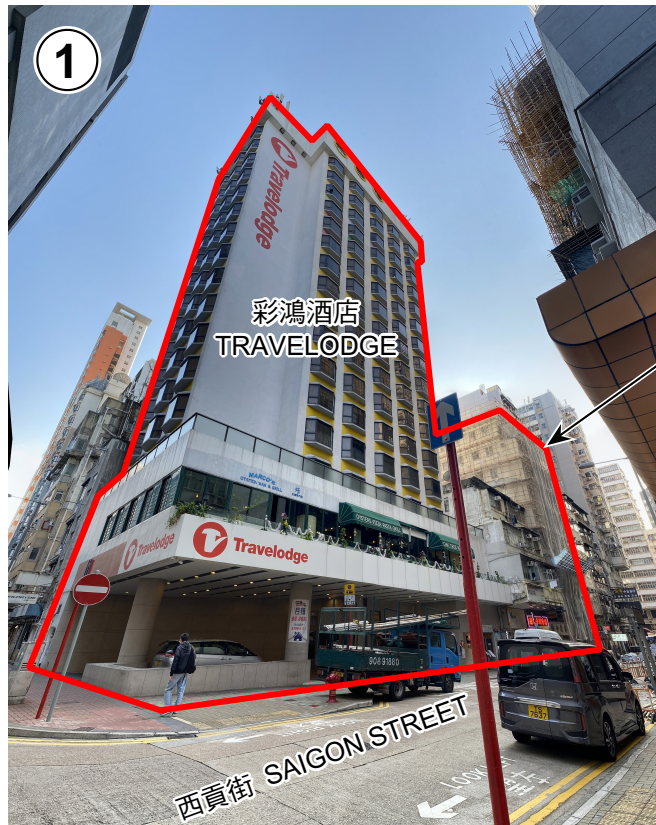


參考編號
REFERENCE No.

A/K2/220

圖 PLAN

A - 3



申請地點
APPLICATION SITE



申請地點
APPLICATION SITE

界線只作識別用
BOUNDARY FOR IDENTIFICATION
PURPOSE ONLY

實地照片 SITE PHOTOS

本圖於2022年2月10日擬備，所根據的資料為攝於2021年11月16日的實地照片

PLAN PREPARED ON 10.2.2022
BASED ON SITE PHOTOS
TAKEN ON 16.11.2021

擬議綜合發展以作分層住宅及商店及服務行業/食肆用途
油麻地西貢街15-15A、17、19及23號
PROPOSED COMPOSITE DEVELOPMENT WITH FLAT AND
SHOP AND SERVICES / EATING PLACE USES
15-15A, 17, 19 AND 23 SAIGON STREET, YAU MA TEI

規劃署
PLANNING
DEPARTMENT



參考編號
REFERENCE No.

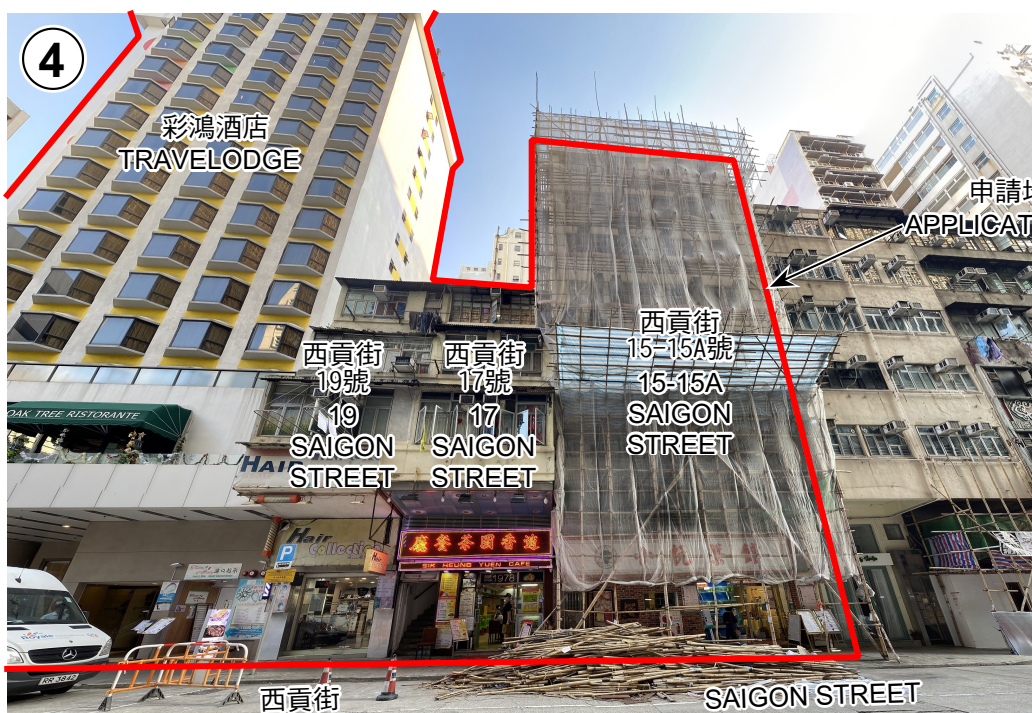
A/K2/220

圖 PLAN

A - 4



申請地點
APPLICATION SITE



申請地點
APPLICATION SITE

界線只作識別用
BOUNDARY FOR IDENTIFICATION
PURPOSE ONLY

實地照片 SITE PHOTOS

本圖於2022年2月10日擬備，所根據的資料為攝於2021年11月16日的實地照片
PLAN PREPARED ON 10.2.2022
BASED ON SITE PHOTOS
TAKEN ON 16.11.2021

擬議綜合發展以作分層住宅及商店及服務行業/食肆用途
油麻地西貢街15-15A、17、19及23號
PROPOSED COMPOSITE DEVELOPMENT WITH FLAT AND
SHOP AND SERVICES / EATING PLACE USES
15-15A, 17, 19 AND 23 SAIGON STREET, YAU MA TEI

規劃署
PLANNING
DEPARTMENT



參考編號
REFERENCE No.

A/K2/220

圖 PLAN

A - 5