

N



Structure 1

Site office

GFA: Not exceeding 40m²

Height: Not exceeding 6m

No. of storey: 2

7m Ingress/
Egress

7m Ingress/
Egress

Open storage of
recyclable materials
(metal and plastic)

20m diameter
manoeuvring
circle

Open storage of
construction materials

One 11m x 3.5m loading/
unloading bay for medium
goods vehicle

Structure 2

Warehouse for storage
of construction materials

GFA: Not exceeding 228m²

Height: Not exceeding 8m

No. of storey: 1

Structure 3

Warehouse for storage
of construction materials

GFA: Not exceeding 228m²

Height: Not exceeding 8m

No. of storey: 1

Structure 4

Warehouse for storage
of construction materials

GFA: Not exceeding 228m²

Height: Not exceeding 8m

No. of storey: 1

Project 項目名稱:

Proposed Temporary Open Storage of
Recyclable Materials (including Metal
and Plastic) & Construction Materials
and Warehouses for Storage of
Construction Materials for a Period of 3
Years at Lots 280 (Part), 281 (Part) &
681 (Part) in D.D.125, San Wai, Ha
Tsuen, Yuen Long, N.T.

Drawing Title 圖目:

Proposed Layout Plan

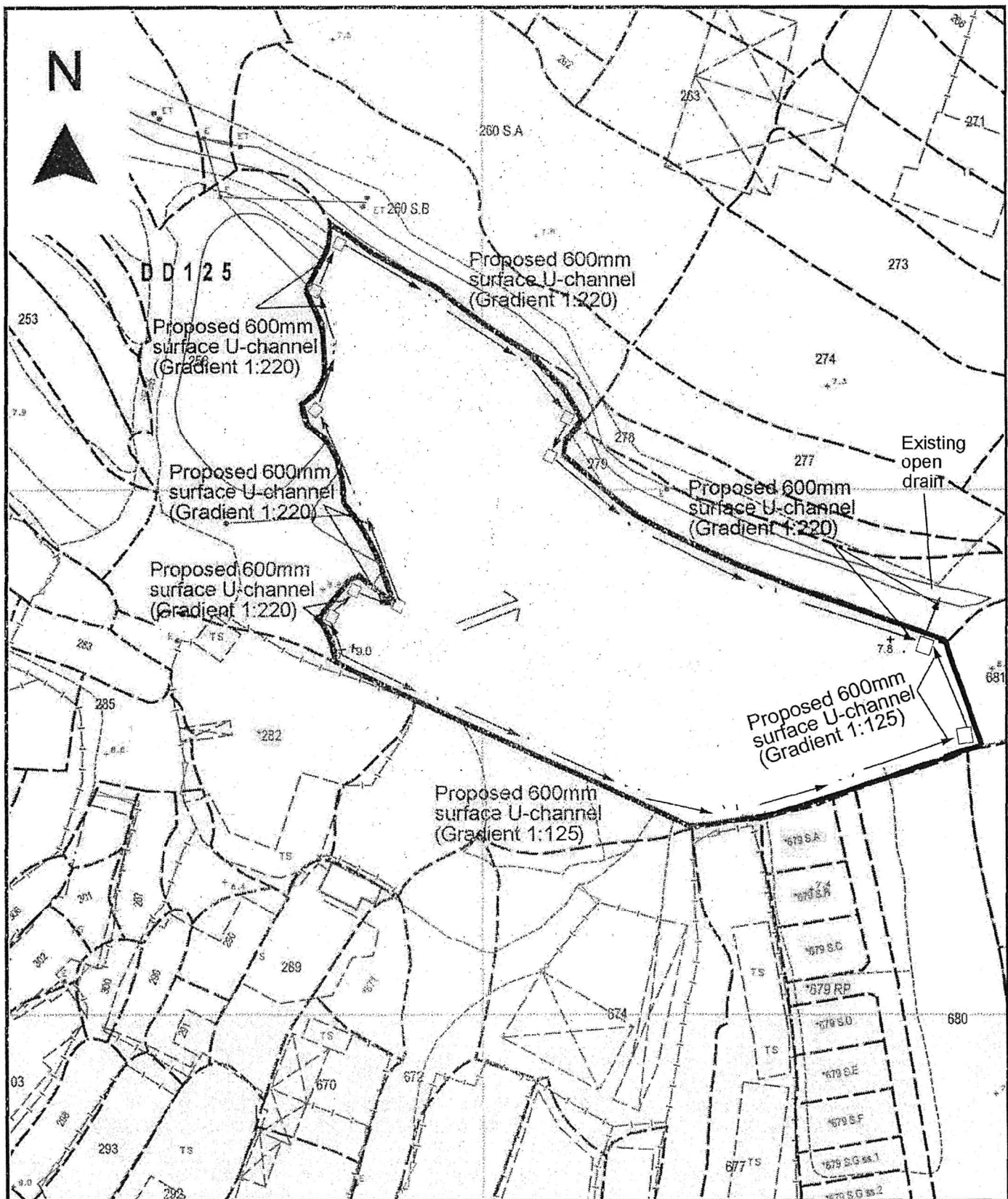
Drawing No. 圖號:

Figure 3

Remarks 備註:

Scale 比例:

1:1000



Project 項目名稱:

Proposed Temporary Open Storage of Recyclable Materials (including Metal and Plastic) & Construction Materials and Warehouses for Storage of Construction Materials for a Period of 3 Years at Lots 280 (Part), 281 (Part) & 681 (Part) in D.D.125, San Wai, Ha Tsuen, Yuen Long, N.T.

Drawing Title 圖目:

Proposed Drainage Plan

Drawing No. 圖號:

Figure 4

Remarks 備註:

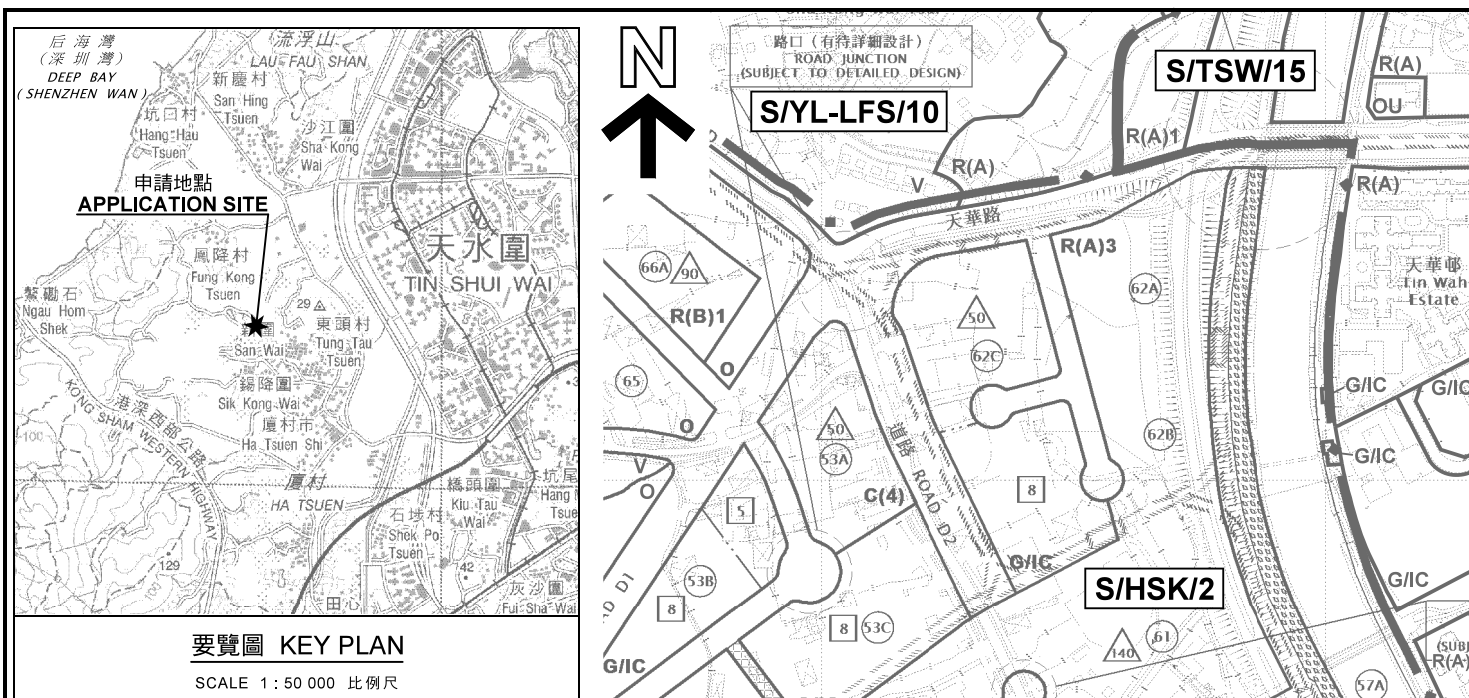
☐ Proposed catchpit

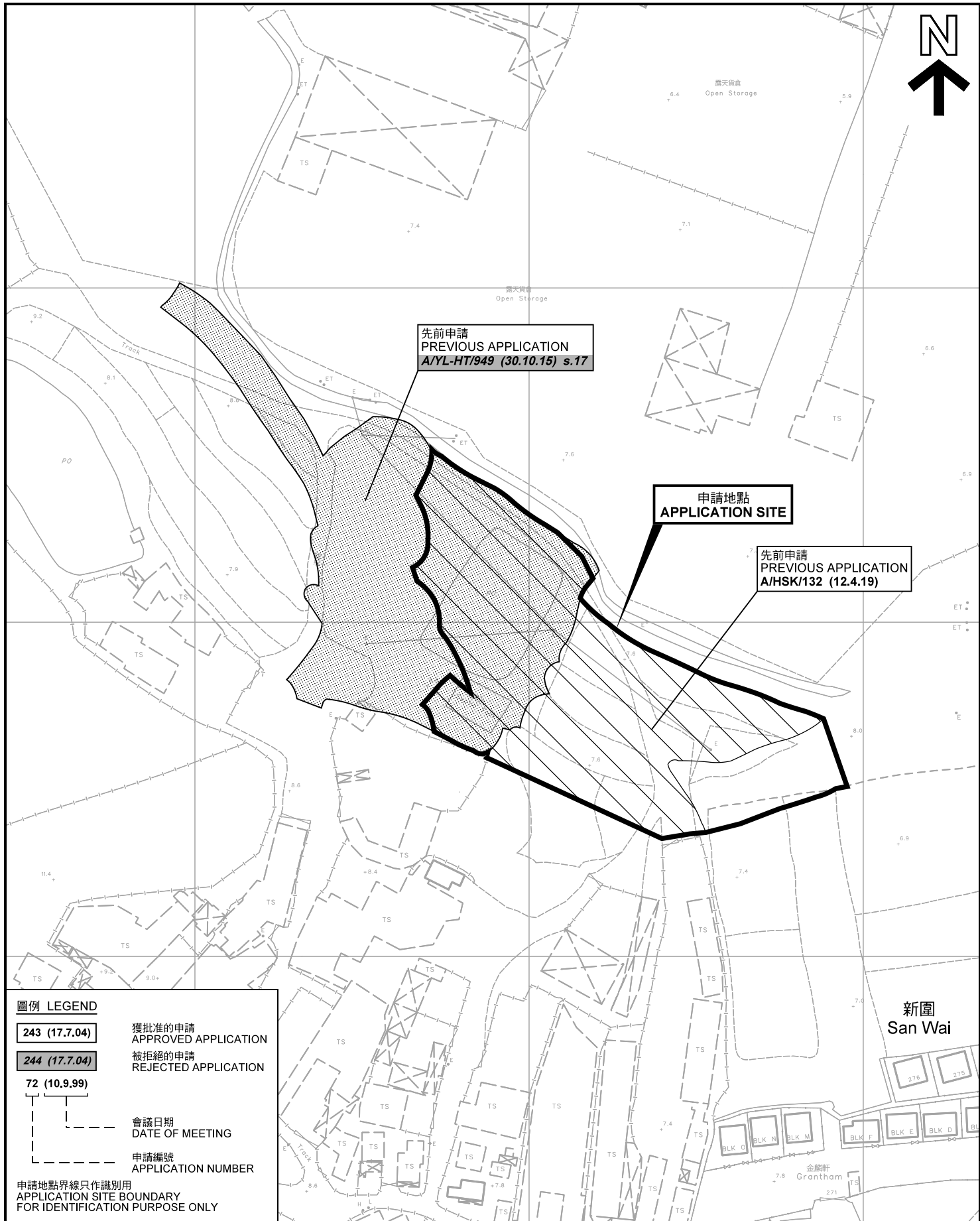
+7.8 Level (in mPD)

⇐ Flow of surface runoff

Scale 比例:

1:1000





圖例 LEGEND

243 (17.7.04)

獲批准的申請
APPROVED APPLICATION

244 (17.7.04)

被拒絕的申請
REJECTED APPLICATION

72 (10.9.99)

會議日期
DATE OF MEETING

申請編號
APPLICATION NUMBER

申請地點界線只作識別用
APPLICATION SITE BOUNDARY
FOR IDENTIFICATION PURPOSE ONLY

先前申請圖 PREVIOUS APPLICATIONS PLAN

臨時露天存放可循環再造物料(包括金屬及塑膠)和建築材料及貨倉存放建築材料(為期3年)
元朗厦村新圍丈量約份第125約地段第280號(部分)、第281號(部分)及第681號(部分)
TEMPORARY OPEN STORAGE OF RECYCLABLE MATERIALS
(INCLUDING METAL AND PLASTIC) & CONSTRUCTION MATERIALS
AND WAREHOUSE FOR STORAGE OF CONSTRUCTION MATERIALS
FOR A PERIOD OF 3 YEARS
LOTS 280 (PART), 281 (PART) AND 681 (PART) IN D.D.125,
SAN WAI, HA TSUEN, YUEN LONG

SCALE 1 : 1 500 比例尺
米 20 0 20 40 60 米
METRES

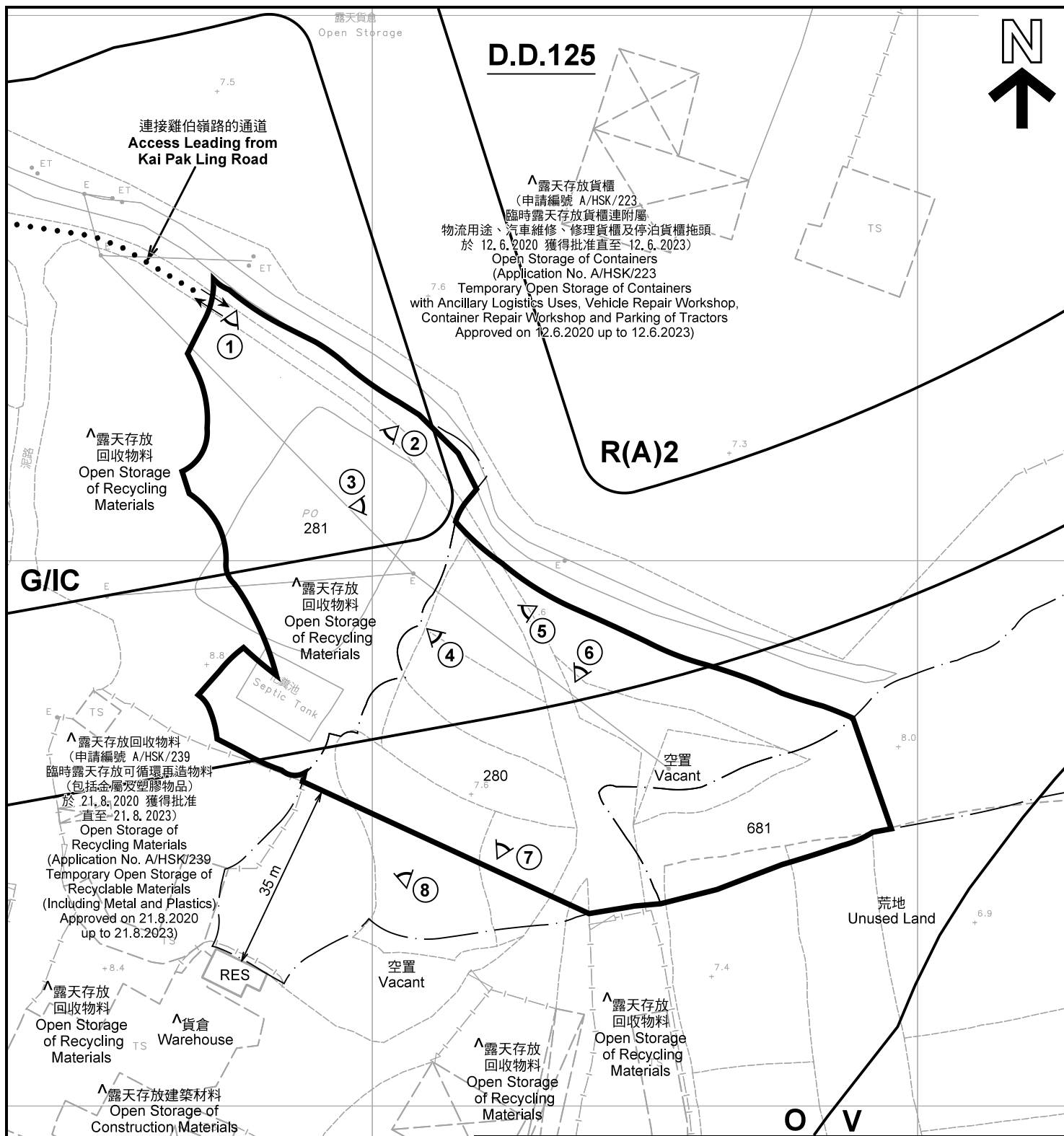
規劃署
PLANNING
DEPARTMENT



參考編號
REFERENCE No.
A/HSK/311

圖 PLAN
A-1b

本摘要圖於2021年6月18日擬備，所根據的資料為測量圖編號 6-NW-2C 及 6-NW-7A
EXTRACT PLAN PREPARED ON 18.6.2021
BASED ON SURVEY SHEETS No.
6-NW-2C & 6-NW-7A



註釋 Notes :

- (1) 2021年5月18日勘測的土地用途
Land uses shown on this plan are in accordance with the land use survey conducted by the Planning Department on 18.5.2021
- (2) * 土地用途跟1992年3月勘測的土地用途一致
Indicates that the use is the same as that revealed by the land use survey conducted by the Planning Department in Mar 1992
- (3) ^ 土地用途跟1992年3月勘測的土地用途有別
Indicates that the use is different from that revealed by the land use survey conducted by the Planning Department in Mar 1992

圖例 LEGEND

- | | | | |
|-------------|--|------------|---|
| | 申請地點(界線只作識別用)
APPLICATION SITE
(BOUNDARY FOR IDENTIFICATION
PURPOSE ONLY) | | 休憩用地
OPEN SPACE |
| R(A) | 住宅(甲類)
RESIDENTIAL (GROUP A) | RES | 住用構築物
RESIDENTIAL STRUCTURES |
| V | 鄉村式發展
VILLAGE TYPE DEVELOPMENT | | 實地照片的觀景點
VIEWING POINT OF SITE PHOTO |
| G/IC | 政府、機構或社區
GOVERNMENT, INSTITUTION OR
COMMUNITY | | 入口/出口
INGRESS / EGRESS |

平面圖 SITE PLAN

臨時露天存放可循環再造物料(包括金屬及塑膠)和建築材料及貨倉存放建築材料(為期3年)
元朗廈村新圍丈量約份第125約地段第280號(部分)、第281號(部分)及第681號(部分)
TEMPORARY OPEN STORAGE OF RECYCLABLE MATERIALS
(INCLUDING METAL AND PLASTIC) & CONSTRUCTION MATERIALS
AND WAREHOUSE FOR STORAGE OF CONSTRUCTION MATERIALS
FOR A PERIOD OF 3 YEARS
LOTS 280 (PART), 281 (PART) AND 681 (PART) IN D.D.125,
SAN WAI, HA TSUEN, YUEN LONG

SCALE 1 : 1 000 比例尺
米 METRES 20 0 20 40 米 METRES

**規劃署
PLANNING
DEPARTMENT**



參考編號
REFERENCE No.
A/HSK/311

圖 **PLAN
A-2**

本摘要圖於2021年6月23日擬備，所根據的資料為測量圖編號 6-NW-2C 及 6-NW-7A
EXTRACT PLAN PREPARED ON 23.6.2021
BASED ON SURVEY SHEETS No.
6-NW-2C & 6-NW-7A



連接雞伯嶺路的通道
Access Leading from
Kai Pak Ling Road

新圍
San Wai

祥隆圍
Tseung Kong Wai

Nutah

圖例 LEGEND



申請地點(界線只作識別用)
APPLICATION SITE
(BOUNDARY FOR IDENTIFICATION
PURPOSE ONLY)

本摘要圖於2021年6月23日擬備，所根據
的資料為地政總署於2020年11月25日拍得
的航攝照片編號 E106452C
EXTRACT PLAN PREPARED ON 23.6.2021
BASED ON AERIAL PHOTO No.
E106452C TAKEN ON 25.11.2020
BY LANDS DEPARTMENT

航攝照片 AERIAL PHOTO

臨時露天存放可循環再造物料(包括金屬及塑膠)和建築材料及貨倉存放建築材料(為期3年)
元朗廈村新圍丈量約份第125約地段第280號(部分)、第281號(部分)及第681號(部分)
TEMPORARY OPEN STORAGE OF RECYCLABLE MATERIALS
(INCLUDING METAL AND PLASTIC) & CONSTRUCTION MATERIALS
AND WAREHOUSE FOR STORAGE OF CONSTRUCTION MATERIALS
FOR A PERIOD OF 3 YEARS
LOTS 280 (PART), 281 (PART) AND 681 (PART) IN D.D.125,
SAN WAI, HA TSUEN, YUEN LONG

規劃署
PLANNING
DEPARTMENT



參考編號
REFERENCE No.
A/HSK/311

圖 PLAN
A-3



實地照片 SITE PHOTOS

臨時露天存放可循環再造物料(包括金屬及塑膠)和建築材料及貨倉存放建築材料(為期3年)
元朗廈村新圍丈量約份第125約地段第280號(部分)、第281號(部分)及第681號(部分)
TEMPORARY OPEN STORAGE OF RECYCLABLE MATERIALS
(INCLUDING METAL AND PLASTIC) & CONSTRUCTION MATERIALS
AND WAREHOUSE FOR STORAGE OF CONSTRUCTION MATERIALS
FOR A PERIOD OF 3 YEARS
LOTS 280 (PART), 281 (PART) AND 681 (PART) IN D.D.125,
SAN WAI, HA TSUEN, YUEN LONG

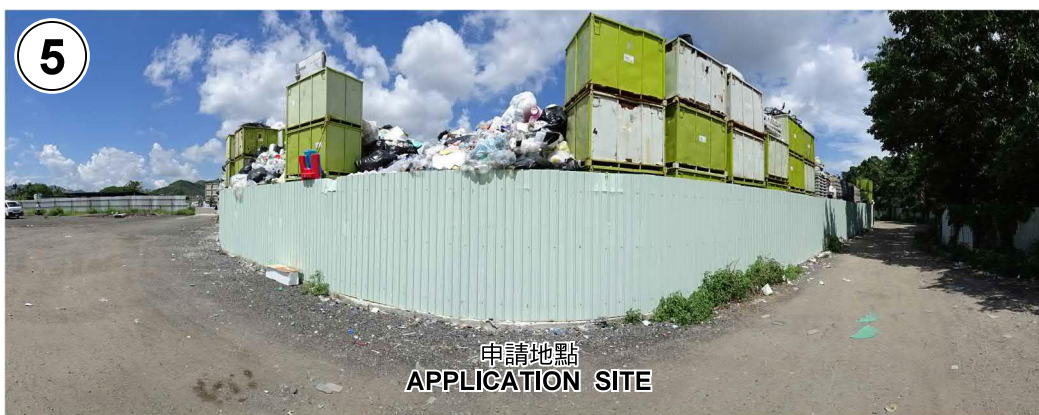
規劃署
PLANNING
DEPARTMENT



參考編號
REFERENCE No.
A/HSK/311

圖 PLAN
A-4a

本圖於2021年6月18日擬備，所根據的資料為攝於2021年5月18日的實地照片
PLAN PREPARED ON 18.6.2021
BASED ON SITE PHOTOS TAKEN ON 18.5.2021



實地照片 SITE PHOTOS

臨時露天存放可循環再造物料(包括金屬及塑膠)和建築材料及貨倉存放建築材料(為期3年)
元朗廈村新圍丈量約份第125約地段第280號(部分)、第281號(部分)及第681號(部分)
TEMPORARY OPEN STORAGE OF RECYCLABLE MATERIALS
(INCLUDING METAL AND PLASTIC) & CONSTRUCTION MATERIALS
AND WAREHOUSE FOR STORAGE OF CONSTRUCTION MATERIALS
FOR A PERIOD OF 3 YEARS
LOTS 280 (PART), 281 (PART) AND 681 (PART) IN D.D.125,
SAN WAI, HA TSUEN, YUEN LONG

規劃署
PLANNING
DEPARTMENT



參考編號
REFERENCE No.
A/HSK/311

圖 PLAN
A-4b

本圖於2021年6月18日擬備，所根據的資料為攝於2021年5月18日的實地照片
PLAN PREPARED ON 18.6.2021
BASED ON SITE PHOTOS TAKEN ON 18.5.2021