

Project 項目名稱:

Proposed Temporary Shop and Services (Real Estate Agency & Interior Design Sample Showroom) for a Period of 3 Years at Lots 1743 S.H (Part) & 1743 S.I (Part) in D.D. 125, San Uk Tsuen, Yuen Long, N.T.

Drawing Title 圖目:

Location Plan

Drawing No. 圖號:

Figure 2

Remarks 備註:

● ● ● Vehicular access leading from Tin Ha Road

Scale 比例:

1:7500

(摘錄自申請人於 4.10.2021 呈交的申請書)
(Extract from Applicant's Submission of 4.10.2021)

參考編號
REFERENCE No.
A/HSK/335

繪圖 DRAWING
A-1



Structure 3

Electricity meter room
GFA: Not exceeding 2m²
Height: Not exceeding 3m
No. of storey: 1

Interior design
sample showroom
GFA: Not exceeding 32m²

Structure 2

Water tank being fire
service installations
GFA: Not exceeding 2m²
Height: Not exceeding 5m
No. of storey: 1

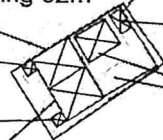
Site office for
Real Estate Agency
GFA: Not exceeding 32m²

Structure 1

Converted containers under
open shed
GFA: Not exceeding 150m²
Height: Not exceeding 5m
No. of storey: 1

Toilet
GFA: Not exceeding 6m²

Interior design
sample showroom
GFA: Not exceeding 75m²



Project 項目名稱:

Proposed Temporary Shop and Services (Real Estate Agency & Interior Design Sample Showroom) for a Period of 3 Years at Lots 1743 S.H (Part) & 1743 S.I (Part) in D.D. 125, San Uk Tsuen, Yuen Long, N.T.

Drawing Title 圖目:

Proposed Layout Plan

Drawing No. 圖號:

Figure 3

Remarks 備註:

Scale 比例:

1:1000

(摘錄自申請人於 4. 10. 2021 呈交的申請書)
(Extract from Applicant's
Submission of 4.10.2021)

參考編號
REFERENCE No.
A/HSK/335

繪圖 DRAWING
A-2

Tree	Approximate Height	Spacing	Quantity
● Existing <i>Bauhinia blakeana</i>	2.75m	4m	3



Structure 3

Electricity meter room
GFA: Not exceeding 2m²
Height: Not exceeding 3m
No. of storey: 1

Interior design
sample showroom
GFA: Not exceeding 32m²

Structure 2

Water tank being fire
service installations
GFA: Not exceeding 2m²
Height: Not exceeding 5m
No. of storey: 1

Site office for
Real Estate Agency
GFA: Not exceeding 32m²

Structure 1

Converted containers under
open shed
GFA: Not exceeding 150m²
Height: Not exceeding 5m
No. of storey: 1

Toilet
GFA: Not exceeding 6m²

Interior design
sample showroom
GFA: Not exceeding 75m²

Project 項目名稱:

Proposed Temporary Shop and Services (Real Estate Agency & Interior Design Sample Showroom) for a Period of 3 Years at Lots 1743 S.H (Part) & 1743 S.I (Part) in D.D. 125, San Uk Tsuen, Yuen Long, N.T.

Drawing Title 圖目:

Proposed Landscape & Tree Preservation Plan

Drawing No. 圖號:

Figure 4

Remarks 備註:

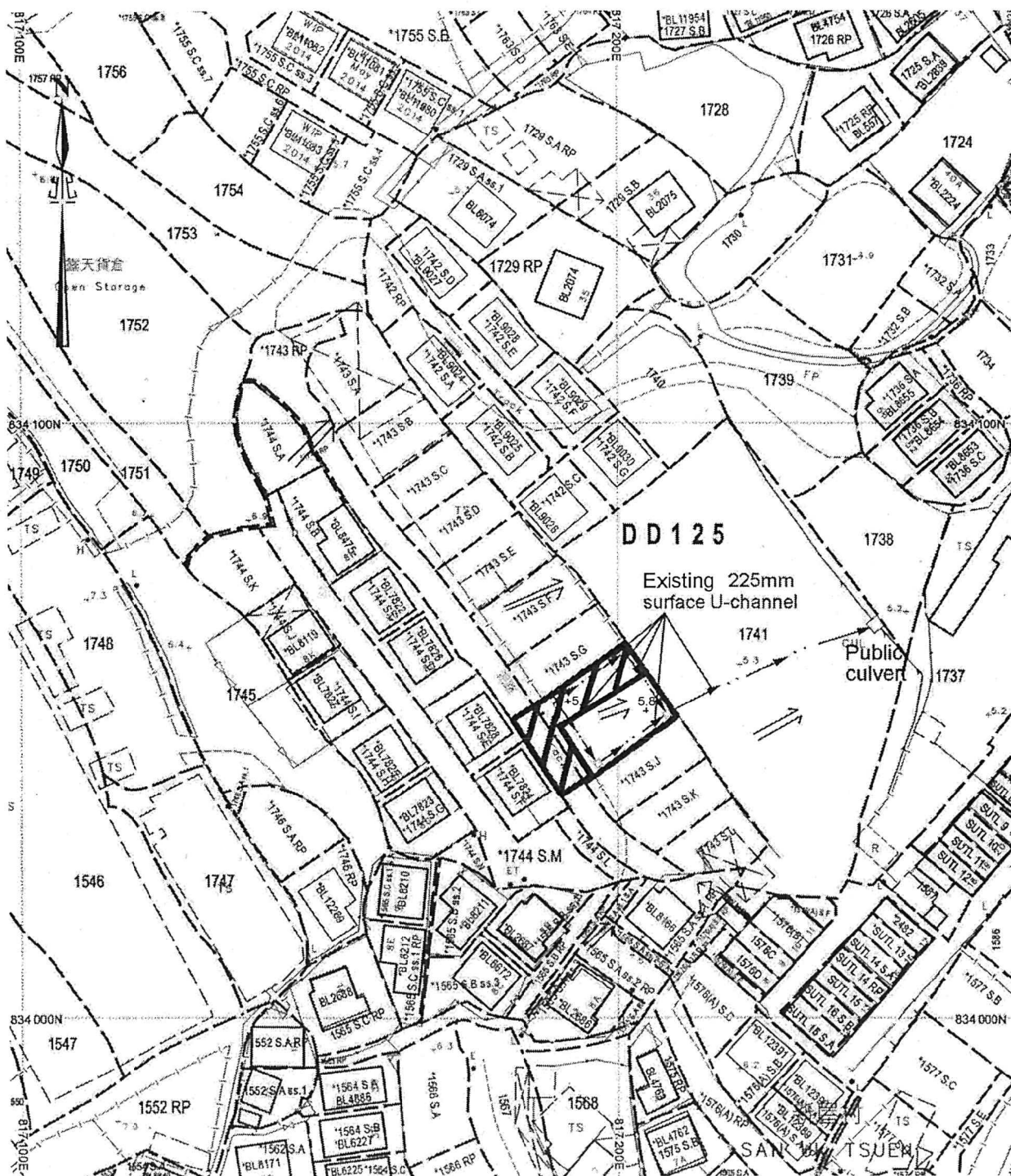
Scale 比例:

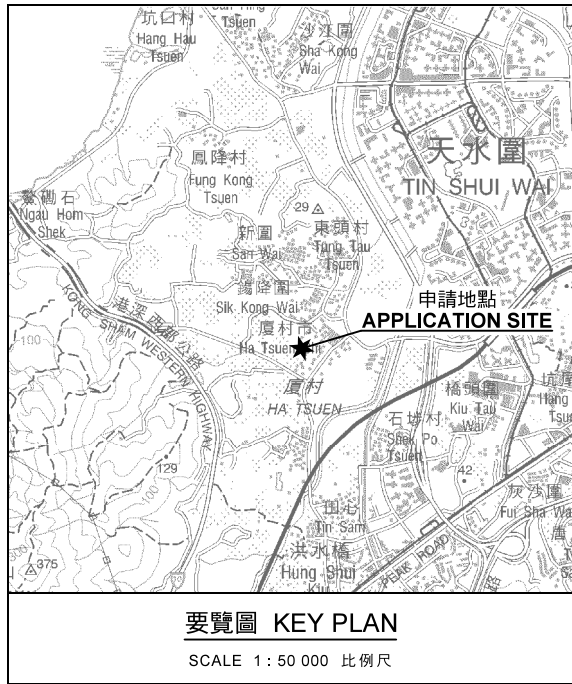
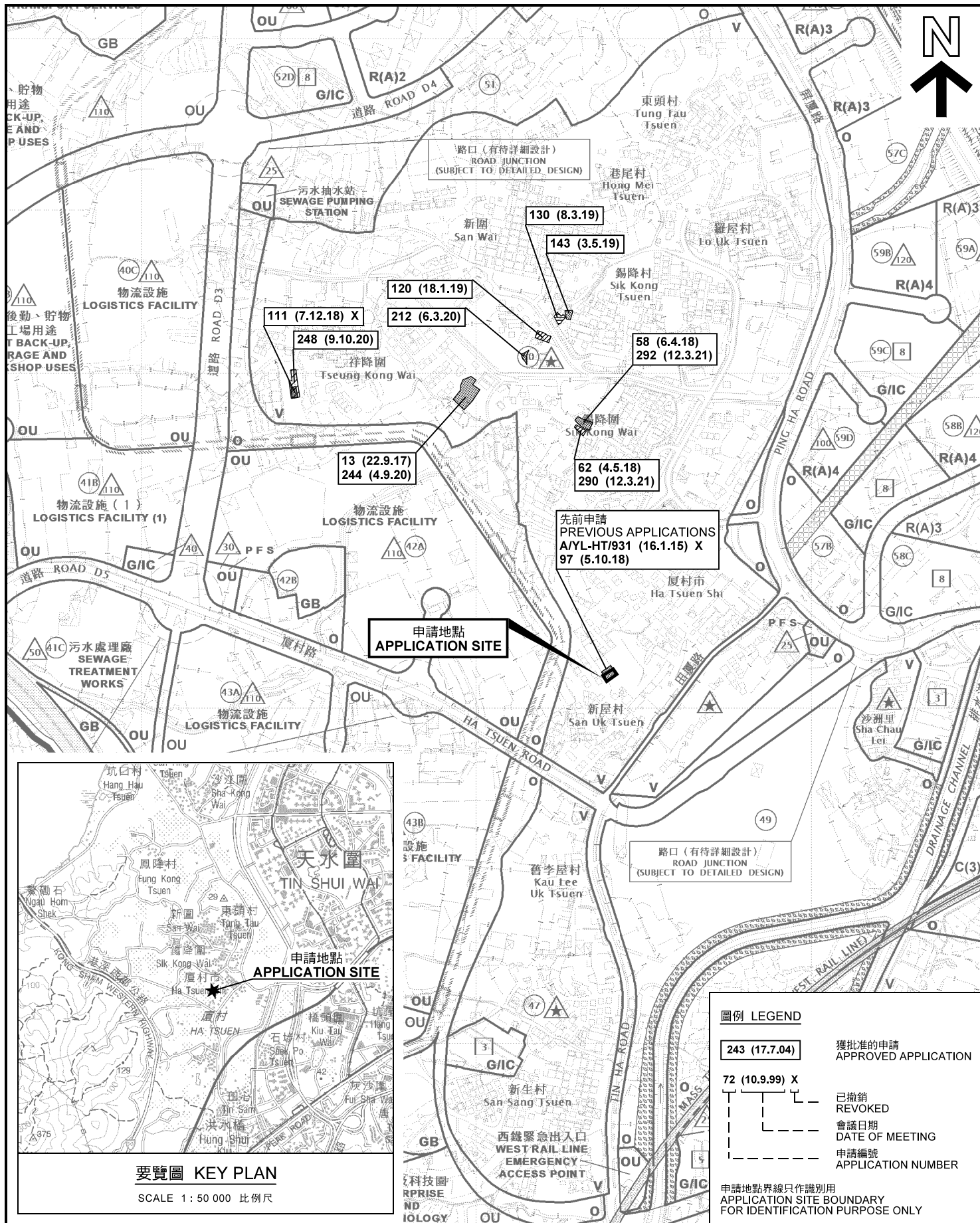
1:1000

(摘錄自申請人於 4.10.2021 呈交的申請書)
(Extract from Applicant's
Submission of 4.10.2021)

參考編號
REFERENCE No.
A/HSK/335

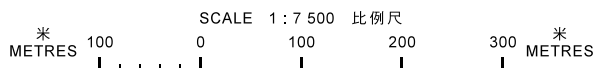
繪圖 DRAWING
A-3





位置圖 LOCATION PLAN

臨時商店及服務行業(地產代理及室內設計樣板展示)(為期3年)
元朗新屋村丈量約份第125約地段第1743號H分段(部分)及第1743號I分段(部分)
TEMPORARY SHOP AND SERVICES (REAL ESTATE AGENCY AND
INTERIOR DESIGN SAMPLE SHOWROOM) FOR A PERIOD OF 3 YEARS
LOTS 1743 S.H (PART) & 1743 S.I (PART) IN D.D.125,
SAN UK TSUEN, YUEN LONG

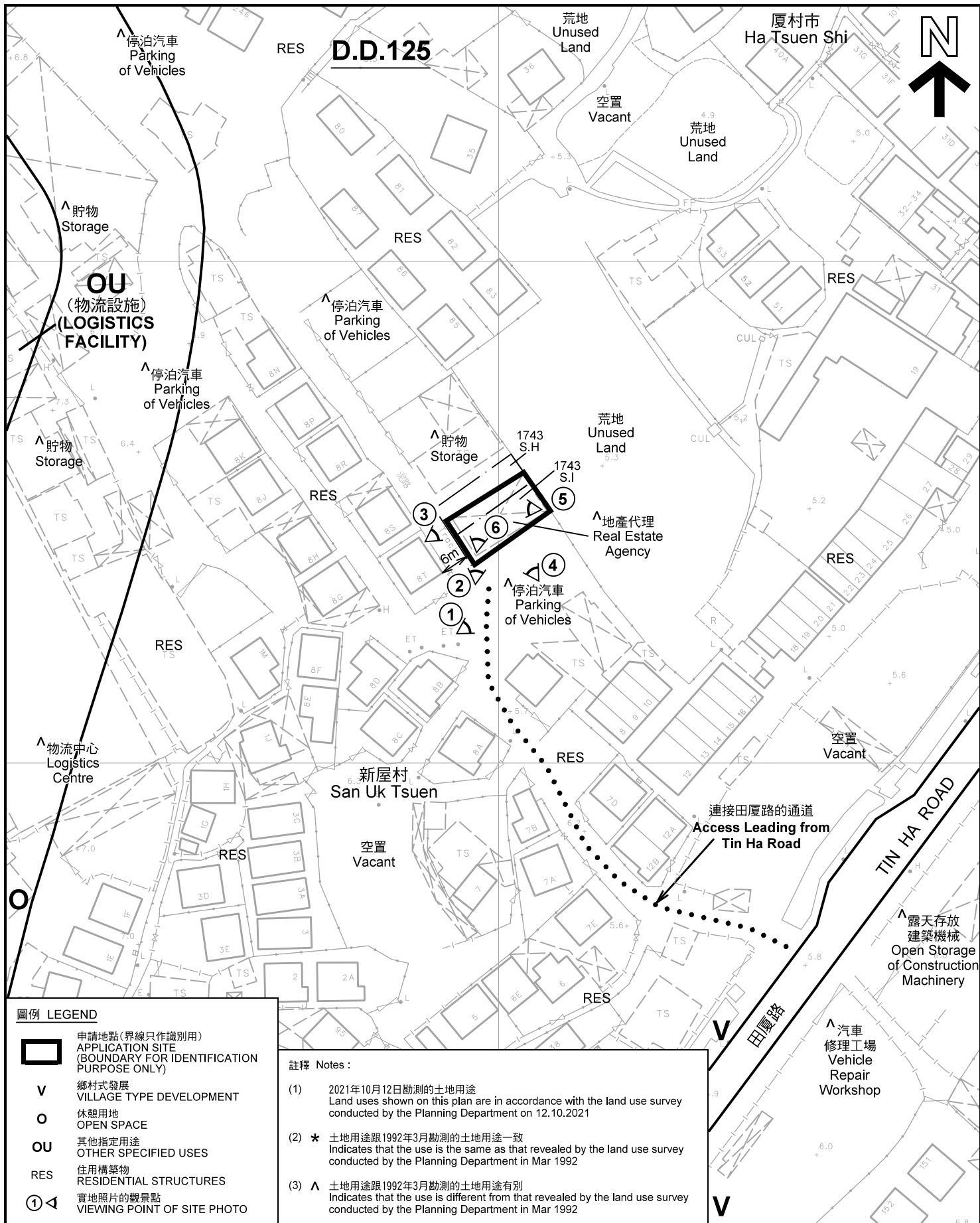


規劃署
PLANNING
DEPARTMENT



參考編號
REFERENCE No.
A/HSK/335

圖 PLAN
A-1



圖例 LEGEND

- 申請地點(界線只作識別用)
APPLICATION SITE
(BOUNDARY FOR IDENTIFICATION
PURPOSE ONLY)
- 鄉村式發展
VILLAGE TYPE DEVELOPMENT
- 休憩用地
OPEN SPACE
- 其他指定用途
OTHER SPECIFIED USES
- 住用構築物
RESIDENTIAL STRUCTURES
- 實地照片的觀景點
VIEWING POINT OF SITE PHOTO

註釋 Notes :

- (1) 2021年10月12日勘測的土地用途
Land uses shown on this plan are in accordance with the land use survey conducted by the Planning Department on 12.10.2021
- (2) * 土地用途跟1992年3月勘測的土地用途一致
Indicates that the use is the same as that revealed by the land use survey conducted by the Planning Department in Mar 1992
- (3) ^ 土地用途跟1992年3月勘測的土地用途有別
Indicates that the use is different from that revealed by the land use survey conducted by the Planning Department in Mar 1992

平面圖 SITE PLAN

本摘要圖於2021年11月3日擬備，所根據的資料為測量圖編號 6-NW-7C 及 6-NW-7D
EXTRACT PLAN PREPARED ON 3.11.2021
BASED ON SURVEY SHEETS No. 6-NW-7C & 6-NW-7D

臨時商店及服務行業(地產代理及室內設計樣板展示)(為期3年)
元朗新屋村丈量約份第125約地段第1743號H分段(部分)及第1743號I分段(部分)
TEMPORARY SHOP AND SERVICES (REAL ESTATE AGENCY AND
INTERIOR DESIGN SAMPLE SHOWROOM) FOR A PERIOD OF 3 YEARS
LOTS 1743 S.H (PART) & 1743 S.I (PART) IN D.D.125,
SAN UK TSUEN, YUEN LONG

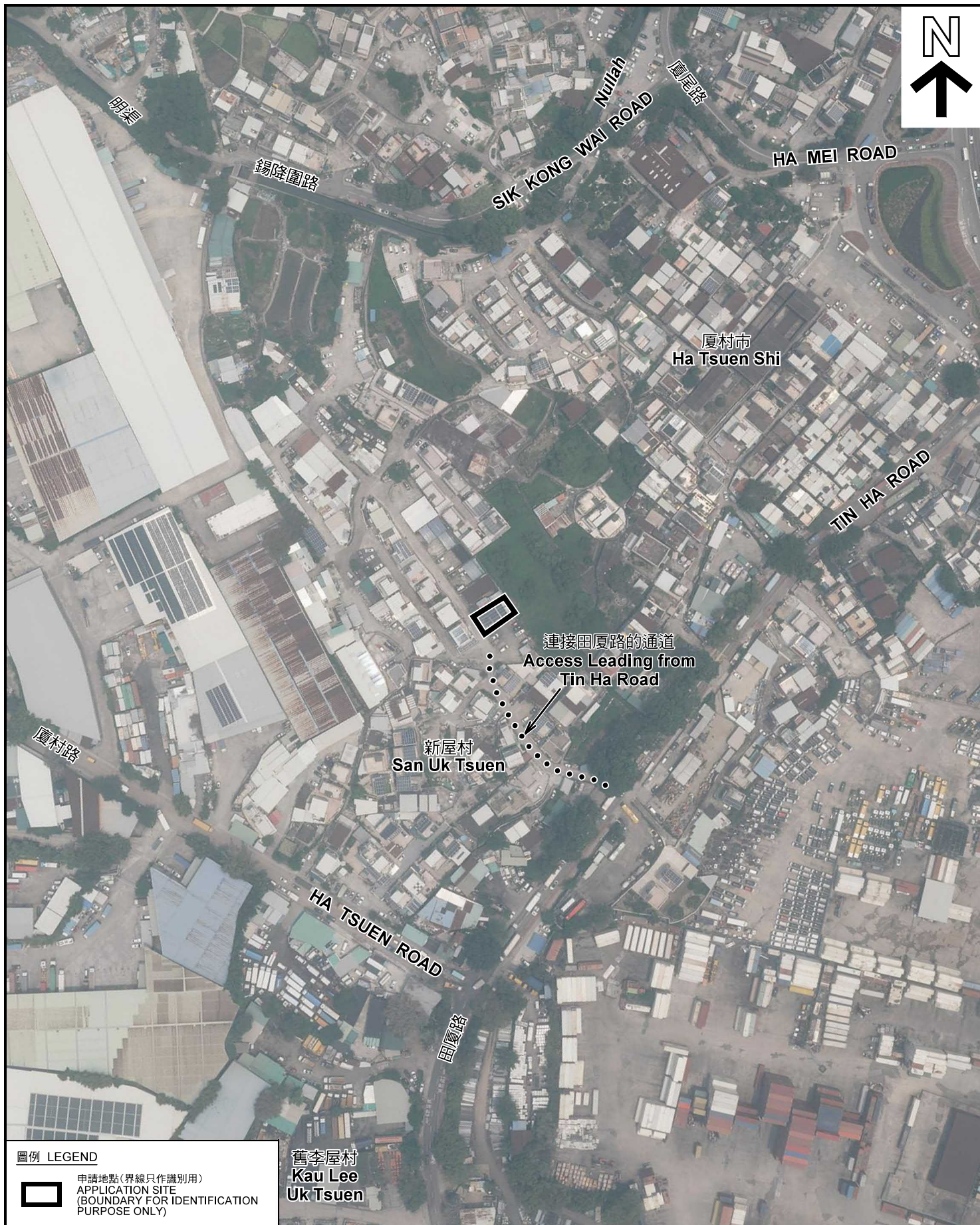
SCALE 1 : 1 000 比例尺
米 METRES 20 0 20 40 米 METRES

規劃署
PLANNING
DEPARTMENT



參考編號
REFERENCE No.
A/HSK/335

圖 PLAN
A-2



圖例 LEGEND



申請地點(界線只作識別用)
APPLICATION SITE
(BOUNDARY FOR IDENTIFICATION
PURPOSE ONLY)

舊李屋村
Kau Lee
Uk Tsuen

本摘要圖於2021年11月2日擬備，所根據的資料為地政總署於2021年7月24日拍得的航攝照片編號 E140425C
EXTRACT PLAN PREPARED ON 2.11.2021
BASED ON AERIAL PHOTO No.
E140425C TAKEN ON 24.7.2021
BY LANDS DEPARTMENT

航攝照片 AERIAL PHOTO

臨時商店及服務行業(地產代理及室內設計樣板展示)(為期3年)
元朗新屋村丈量約份第125約地段第1743號H分段(部分)及第1743號I分段(部分)
TEMPORARY SHOP AND SERVICES (REAL ESTATE AGENCY AND
INTERIOR DESIGN SAMPLE SHOWROOM) FOR A PERIOD OF 3 YEARS
LOTS 1743 S.H (PART) & 1743 S.I (PART) IN D.D.125,
SAN UK TSUEN, YUEN LONG

規劃署
PLANNING
DEPARTMENT



參考編號
REFERENCE No.
A/HSK/335

圖 PLAN
A-3



本圖於2021年11月2日擬備，所根據的資料為攝於2021年10月12日的實地照片
PLAN PREPARED ON 2.11.2021
BASED ON SITE PHOTOS TAKEN ON 12.10.2021

實地照片 SITE PHOTOS

臨時商店及服務行業(地產代理及室內設計樣板展示)(為期3年)
元朗新屋村丈量約份第125約地段第1743號H分段(部分)及第1743號I分段(部分)
TEMPORARY SHOP AND SERVICES (REAL ESTATE AGENCY AND
INTERIOR DESIGN SAMPLE SHOWROOM) FOR A PERIOD OF 3 YEARS
LOTS 1743 S.H (PART) & 1743 S.I (PART) IN D.D.125,
SAN UK TSUEN, YUEN LONG

規劃署
PLANNING
DEPARTMENT



參考編號
REFERENCE No.
A/HSK/335

圖 PLAN
A-4a



實地照片 SITE PHOTOS

臨時商店及服務行業(地產代理及室內設計樣板展示)(為期3年)
元朗新屋村丈量約份第125約地段第1743號H分段(部分)及第1743號I分段(部分)
TEMPORARY SHOP AND SERVICES (REAL ESTATE AGENCY AND
INTERIOR DESIGN SAMPLE SHOWROOM) FOR A PERIOD OF 3 YEARS
LOTS 1743 S.H (PART) & 1743 S.I (PART) IN D.D.125,
SAN UK TSUEN, YUEN LONG

規劃署
PLANNING
DEPARTMENT



參考編號
REFERENCE No.
A/HSK/335

圖 PLAN
A-4b

本圖於2021年11月2日擬備，所根據的
資料為攝於2021年10月12日的實地照片
PLAN PREPARED ON 2.11.2021
BASED ON SITE PHOTOS TAKEN
ON 12.10.2021