

(摘錄自申請人於 25.10.2022 呈交的進一步資料)  
(Extract from Applicant's Further  
Information Submitted on 25.10.2022)

參考編號  
REFERENCE No.  
A/HSK/407

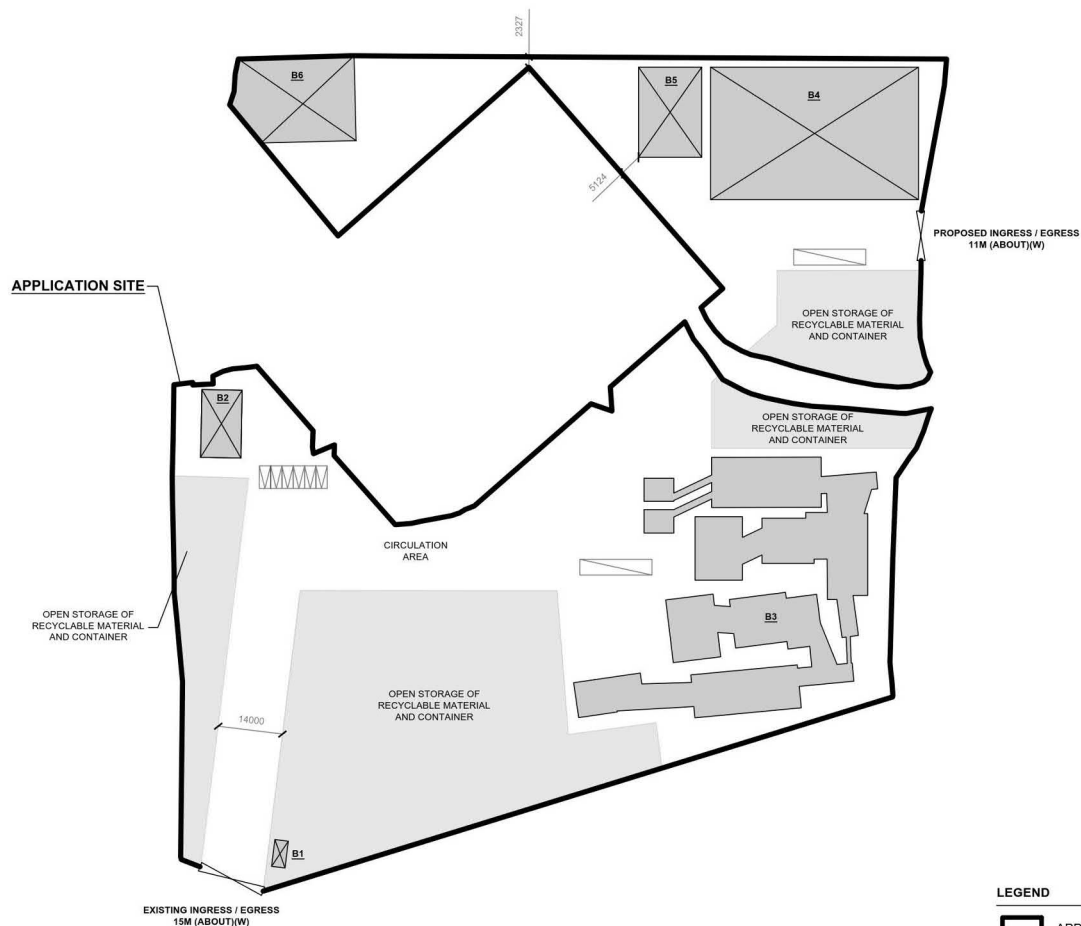
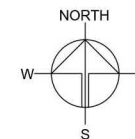
繪圖 DRAWING  
A-1

# DEVELOPMENT PARAMETERS

APPLICATION SITE AREA	: 19,340 m <sup>2</sup> (ABOUT)
COVERED AREA	: 4,118 m <sup>2</sup> (ABOUT)
UNCOVERED AREA	: 15,222 m <sup>2</sup> (ABOUT)
PLOT RATIO	: 0.22 (ABOUT)
SITE COVERAGE	: 21 % (ABOUT)
NO. OF STRUCTURE	: 6
DOMESTIC GFA	: N/A
NON-DOMESTIC GFA	: 4,253 m <sup>2</sup> (ABOUT)
BUILDING HEIGHT	: 3 m - 9 m (ABOUT)
NO. OF STOREY	: 1 - 2

STRUCTURE	USE	COVERED AREA	GFA	BUILDING HEIGHT
B1	CARETAKER OFFICE	18 m <sup>2</sup> (ABOUT)	18 m <sup>2</sup> (ABOUT)	3 m (ABOUT)(1-STOREY)
B2	SITE OFFICE	135 m <sup>2</sup> (ABOUT)	270m <sup>2</sup> (ABOUT)	7 m (ABOUT)(2-STOREY)
B3	RW* & STORAGE OF RECYCLE MATERIAL	1,847 m <sup>2</sup> (ABOUT)	1,847 m <sup>2</sup> (ABOUT)	9 m (ABOUT)(1-STOREY)
B4	RW* & STORAGE OF RECYCLE MATERIAL	1,356 m <sup>2</sup> (ABOUT)	1,356 m <sup>2</sup> (ABOUT)	8 m (ABOUT)(1-STOREY)
B5	RW* & STORAGE OF RECYCLE MATERIAL	280 m <sup>2</sup> (ABOUT)	280 m <sup>2</sup> (ABOUT)	8 m (ABOUT)(1-STOREY)
B6	STORAGE OF RECYCLE MATERIAL	482 m <sup>2</sup> (ABOUT)	482 m <sup>2</sup> (ABOUT)	8 m (ABOUT)(1-STOREY)
TOTAL		4,118 m <sup>2</sup> (ABOUT)	4,253 m <sup>2</sup> (ABOUT)	

\*RW - RURAL WORKSHOP



## PARKING AND LOADING/UNLOADING PROVISIONS

NO. OF PRIVATE CAR PARKING SPACE	: 6
DIMENSION OF L/U/L SPACE	: 2.5 m (W) X 5 m (L)
NO. OF L/U/L SPACE FOR CONTAINER VEHICLE	: 2
DIMENSION OF L/U/L SPACE	: 3.5m (W) X 16m (L)

## LEGEND

	APPLICATION SITE
	STRUCTURE
	STRUCTURE (MACHINE+ STRUCTURE)
	PARKING SPACE
	LOADING/ UNLOADING SPACE
	INGRESS / EGRESS

PLANNING CONSULTANT

**R-RICHES PROPERTY CONSULTANTS LIMITED**

PROJECT

PROPOSED TEMPORARY RURAL WORKSHOP WITH ANCILLARY FACILITIES FOR A PERIOD OF 3 YEARS

SITE LOCATION

VARIOUS LOTS IN D.D. 125 AND ADJOINING GOVERNMENT LAND, HA TSUEN, YUEN LONG, NEW TERRITORIES

SCALE

1:1500 @ A4

DRAWN BY

MN

DATE

26.9.2022

REVISED BY

DATE

APPROVED BY

DATE

DWG. TITLE

LAYOUT PLAN

DWG NO.

PLAN 4

VER.

002

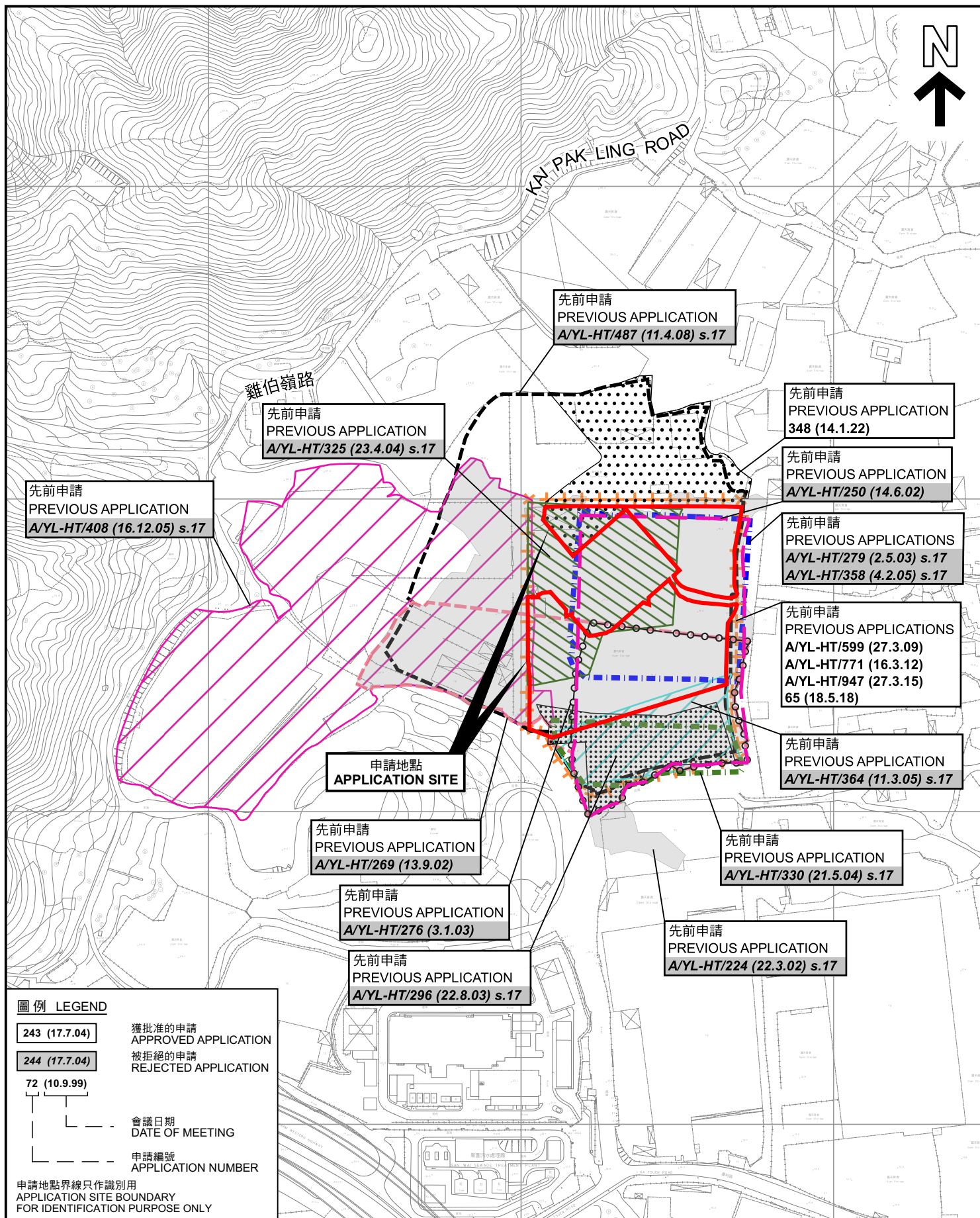
(摘錄自申請人於 25.10.2022 呈交的進一步資料)  
(Extract from Applicant's Further  
Information Submitted on 25.10.2022)

參考編號  
REFERENCE No.  
A/HSK/407

繪圖 DRAWING  
A-2







### 先前申請圖 PREVIOUS APPLICATIONS PLAN

擬議臨時鄉郊工場連附屬設施(為期3年)  
元朗廈村丈量約份第125約多個地段和毗連政府土地  
PROPOSED TEMPORARY RURAL WORKSHOP  
WITH ANCILLARY FACILITIES FOR A PERIOD OF 3 YEARS  
VARIOUS LOTS IN D.D.125 AND ADJOINING GOVERNMENT LAND,  
HA TSUEN, YUEN LONG

SCALE 1:4 000 比例尺  
米 80 0 80 160 米  
METRES

規劃署  
PLANNING  
DEPARTMENT



參考編號  
REFERENCE No.  
A/HSK/407

圖 PLAN  
A-1b

本摘要圖於2022年12月7日擬備，所根據的資料為測量圖編號 6-NW-1D、2C、6B 及 7A  
EXTRACT PLAN PREPARED ON 7.12.2022  
BASED ON SURVEY SHEETS No.  
6-NW-1D, 2C, 6B & 7A







KAI PAK LING ROAD

雞伯嶺路



連接廈村路的通道  
Access Leading from  
Ha Tsuen Road

圖例 LEGEND



申請地點(界線只作識別用)  
APPLICATION SITE  
(BOUNDARY FOR IDENTIFICATION  
PURPOSE ONLY)

航攝照片 AERIAL PHOTO

擬議臨時鄉郊工場連附屬設施(為期3年)  
元朗廈村丈量約份第125約多個地段和毗連政府土地  
PROPOSED TEMPORARY RURAL WORKSHOP  
WITH ANCILLARY FACILITIES FOR A PERIOD OF 3 YEARS  
VARIOUS LOTS IN D.D.125 AND ADJOINING GOVERNMENT LAND,  
HA TSUEN, YUEN LONG

規劃署  
PLANNING  
DEPARTMENT



參考編號  
REFERENCE No.  
A/HSK/407

圖 PLAN  
A-3

本摘要圖於2022年11月9日擬備，所根據  
的資料為地政總署於2021年7月24日拍得  
的航攝照片編號 E140355C  
EXTRACT PLAN PREPARED ON 9.11.2022  
BASED ON AERIAL PHOTO No.  
E140355C TAKEN ON 24.7.2021 BY  
LANDS DEPARTMENT





申請地點界線只作識別用 APPLICATION SITE BOUNDARY FOR IDENTIFICATION PURPOSE ONLY

### 實地照片 SITE PHOTOS

擬議臨時鄉郊工場連附屬設施(為期3年)  
元朗廈村丈量約份第125約多個地段和毗連政府土地  
PROPOSED TEMPORARY RURAL WORKSHOP  
WITH ANCILLARY FACILITIES FOR A PERIOD OF 3 YEARS  
VARIOUS LOTS IN D.D.125 AND ADJOINING GOVERNMENT LAND,  
HA TSUEN, YUEN LONG

規 劃 署  
PLANNING  
DEPARTMENT



參考編號  
REFERENCE No.  
A/HSK/407

圖 PLAN  
A-4a

本圖於2022年12月13日擬備，所根據的  
資料為攝於2022年11月1日的實地照片  
PLAN PREPARED ON 13.12.2022  
BASED ON SITE PHOTOS  
TAKEN ON 1.11.2022





申請地點界線只作識別用 APPLICATION SITE BOUNDARY FOR IDENTIFICATION PURPOSE ONLY

### 實地照片 SITE PHOTOS

擬議臨時鄉郊工場連附屬設施(為期3年)  
元朗廈村丈量約份第125約多個地段和毗連政府土地  
PROPOSED TEMPORARY RURAL WORKSHOP  
WITH ANCILLARY FACILITIES FOR A PERIOD OF 3 YEARS  
VARIOUS LOTS IN D.D.125 AND ADJOINING GOVERNMENT LAND,  
HA TSUEN, YUEN LONG

規劃署  
PLANNING  
DEPARTMENT



參考編號  
REFERENCE No.  
A/HSK/407

圖 PLAN  
A-4b

本圖於2022年12月13日擬備，所根據的  
資料為攝於2022年11月1日的實地照片  
PLAN PREPARED ON 13.12.2022  
BASED ON SITE PHOTOS  
TAKEN ON 1.11.2022