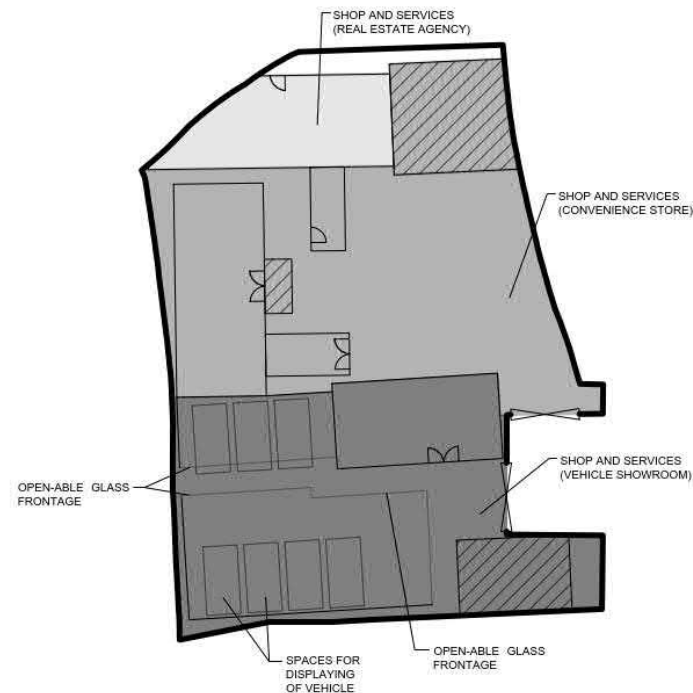
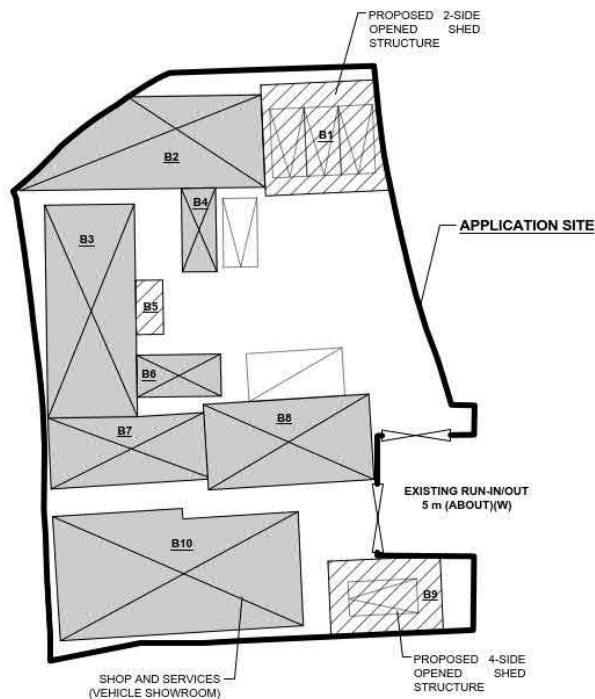
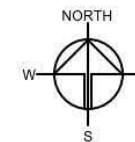


DEVELOPMENT PARAMETERS

APPLICATION SITE AREA	: 1,110 m ²	(ABOUT)
COVERED AREA	: 643 m ²	(ABOUT)
UNCOVERED AREA	: 467 m ²	(ABOUT)
PLOT RATIO	: 0.83	(ABOUT)
SITE COVERAGE	: 58 %	(ABOUT)
NO. OF STRUCTURE	: 10	
DOMESTIC GFA	: NOT APPLICABLE	
NON-DOMESTIC GFA	: 916 m ²	(ABOUT)
TOTAL GFA	: 916 m ²	(ABOUT)
BUILDING HEIGHT	: 3 m - 7 m	(ABOUT)
NO. OF STOREY	: 1 - 2	

STRUCTURE	USE	COVERED AREA	GFA	BUILDING HEIGHT
B1	RAIN SHELTER FOR PARKING SPACE	70 m ² (ABOUT)	70 m ² (ABOUT)	3.5 m (ABOUT)(1-STOREY)
B2	SHOP AND SERVICES WITH OFFICE (REAL ESTATE AGENCY)	96 m ² (ABOUT)	192 m ² (ABOUT)	7 m (ABOUT)(2-STOREY)
B3	SHOP AND SERVICES WITH OFFICE (CONVENIENCE STORE)	102 m ² (ABOUT)	204 m ² (ABOUT)	7m (ABOUT)(2-STOREY)
B4	STORAGE OF GOODS	15 m ² (ABOUT)	15 m ² (ABOUT)	3 m (ABOUT)(1-STOREY)
B5	RAIN SHELTER	8 m ² (ABOUT)	8 m ² (ABOUT)	3 m (ABOUT)(1-STOREY)
B6	STORAGE OF GOODS	19 m ² (ABOUT)	19 m ² (ABOUT)	3 m (ABOUT)(1-STOREY)
B7	SHOP AND SERVICES WITH OFFICE (VEHICLE SHOWROOM)	57 m ² (ABOUT)	57 m ² (ABOUT)	3.5 m (ABOUT)(1-STOREY)
B8	ANCILLARY OFFICE	75 m ² (ABOUT)	150 m ² (ABOUT)	7 m (ABOUT)(2-STOREY)
B9	RAIN SHELTER FOR PARKING SPACE	45 m ² (ABOUT)	45 m ² (ABOUT)	3 m (ABOUT)(1-STOREY)
B10	VEHICLE SHOWROOM	156 m ² (ABOUT)	156 m ² (ABOUT)	3.5 m (ABOUT)(1-STOREY)
TOTAL		643 m ² (ABOUT)	916 m ² (ABOUT)	



INDICATIVELY ONLY

LEGEND

	APPLICATION SITE
	STRUCTURE (ENCLOSED)
	STRUCTURE (CANOPY)
	SPACE FOR DISPLAYING OF VEHICLE
	PARKING SPACE
	LOADING / UNLOADING SPACE
	INGRESS / EGRESS

PARKING AND LOADING/UNLOADING PROVISIONS

NO. OF PRIVATE CAR PARKING SPACE	: 5
DIMENSION OF PARKING SPACE	: 5m (L) X 2.5m (W)
NO. OF L/U/L SPACE FOR LIGHT GOODS VEHICLE	: 1
DIMENSION OF L/U/L SPACE	: 7m (L) X 3.5m (W)

PLANNING CONSULTANT

R-RICHES PROPERTY CONSULTANTS LIMITED

PROJECT

PROPOSED TEMPORARY SHOP AND SERVICES WITH ANCILLARY OFFICE FOR A PERIOD OF 5 YEARS

SITE LOCATION

LOT 2049 RP IN D.D. 124, TIN SAM TSUEN, HUNG SHUI KIU, YUEN LONG, NEW TERRITORIES

SCALE

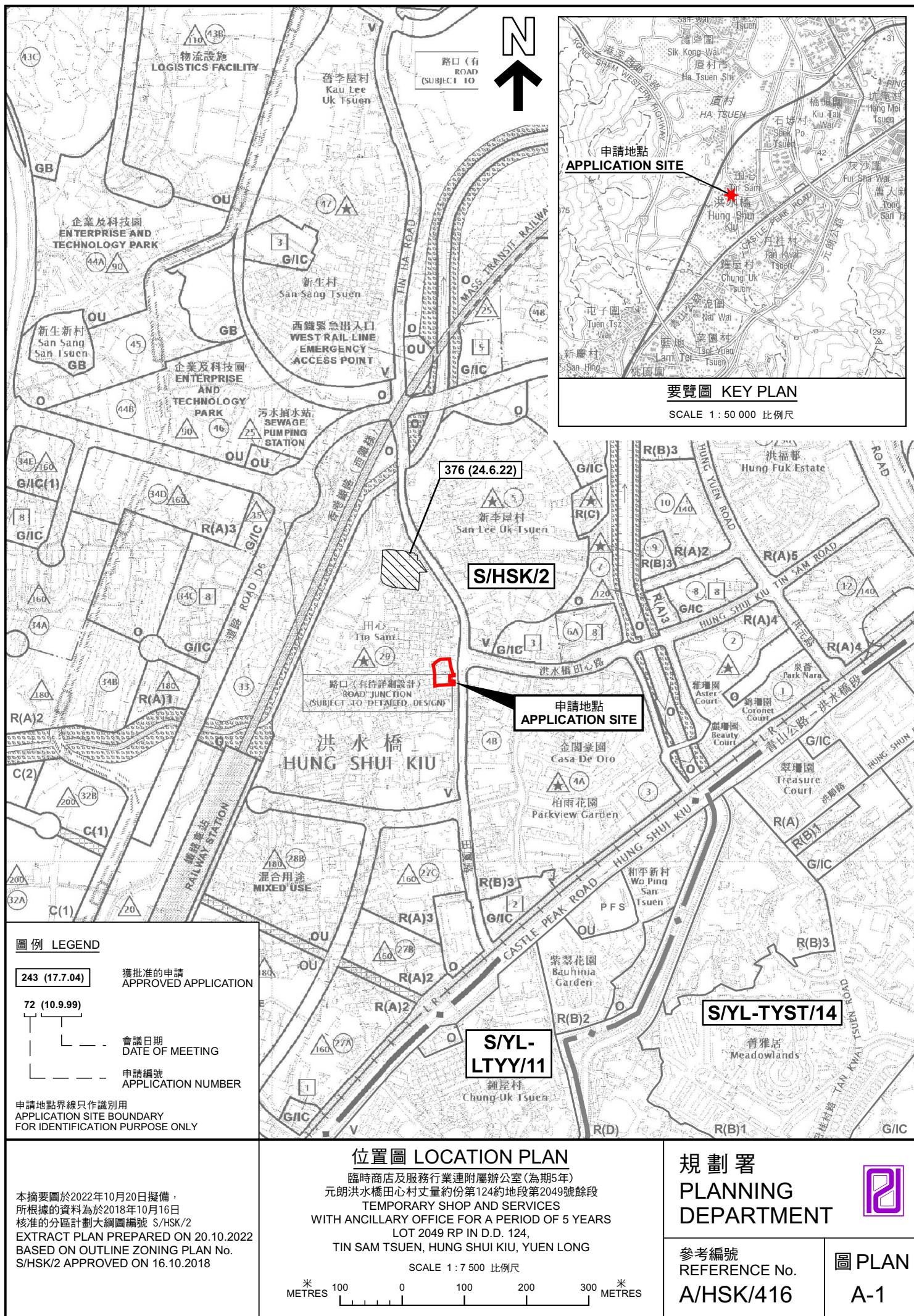
1:500 @ A1

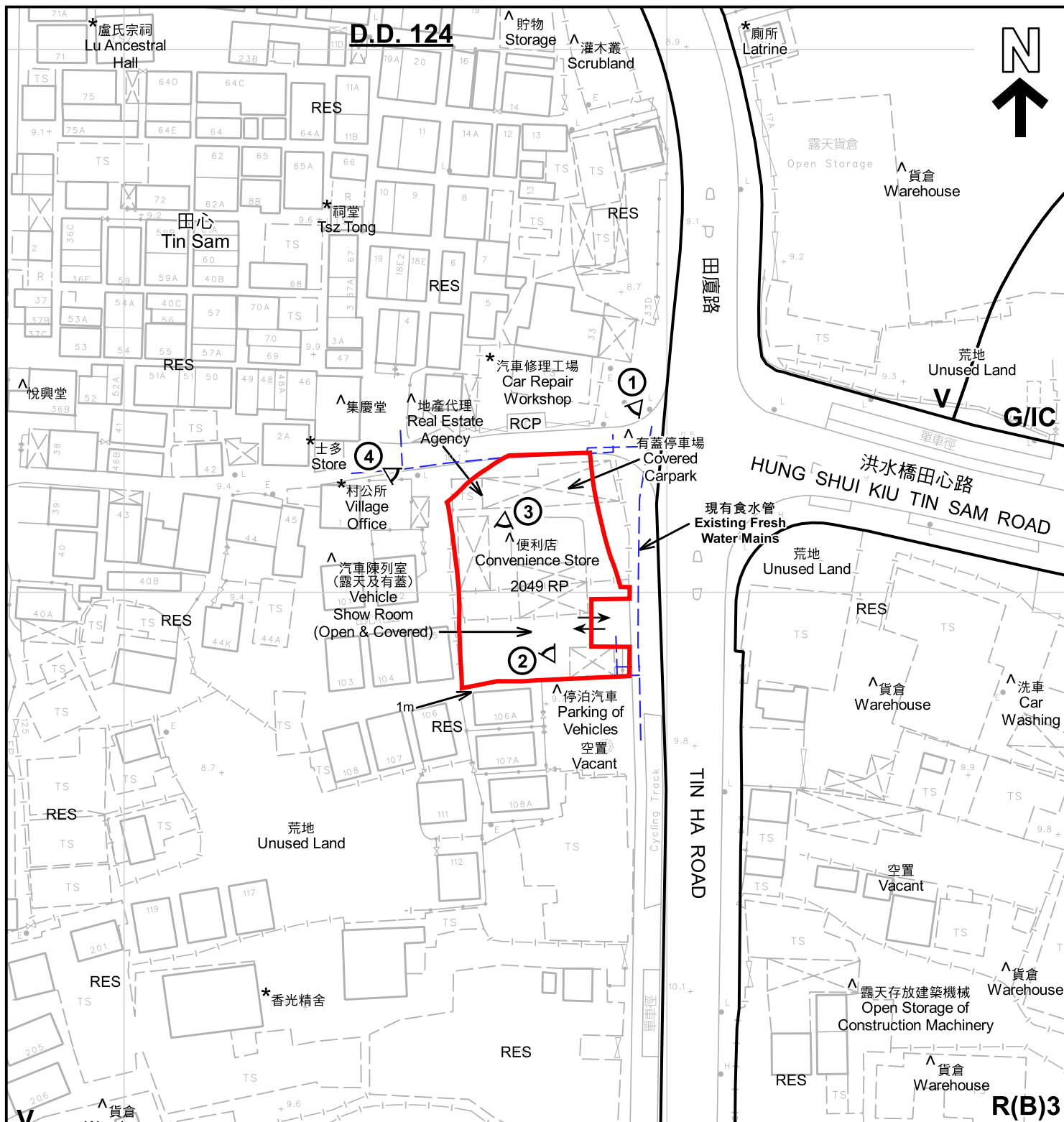
DRAWN BY	DATE
MN	8.9.2022
REVISED BY	DATE
APPROVED BY	DATE
DWG. TITLE	
LAYOUT PLAN	
DWG. NO.	VER.
PLAN 1	002

(摘錄自申請人於 13.10.2022 呈交的補充資料)
(Extract from Applicant's Supplementary Information Submitted on 13.10.2022)

參考編號
REFERENCE No.
A/HSK/416

繪圖 DRAWING
A-1





註釋 Notes:

- (1) 2022年10月14日勘測的土地用途
Land uses shown on this plan are in accordance with the land use survey conducted by the Planning Department on 14.10.2022
- (2) * 土地用途跟1993年6月23日及1993年7月5日勘測的土地用途一致
Indicates that the use is the same as that revealed by the land use survey conducted by the Planning Department on 23.6.1993 & 5.7.1993
- (3) ^ 土地用途跟1993年6月23日及1993年7月5日勘測的土地用途有別
Indicates that the use is different from that revealed by the land use survey conducted by the Planning Department on 23.6.1993 & 5.7.1993

圖例 LEGEND

- 申請地點 (界線只作識別用)
APPLICATION SITE (BOUNDARY FOR IDENTIFICATION PURPOSE ONLY)
- R(B)** 住宅 (乙類)
RESIDENTIAL (GROUP B)
- V** 鄉村式發展
VILLAGE TYPE DEVELOPMENT
- G/IC** 政府、機構或社區
GOVERNMENT, INSTITUTION OR COMMUNITY

- RES** 住用構築物
RESIDENTIAL STRUCTURES
- RCP** 垃圾收集站
REFUSE COLLECTION POINT
- ① 實地照片的觀景點
VIEWING POINT OF SITE PHOTO
- ↔ 入口/出口
INGRESS / EGRESS

平面圖 SITE PLAN

臨時商店及服務行業連附屬辦公室(為期5年)
元朗洪水橋田心村丈量約份第124約地段第2049號餘段
TEMPORARY SHOP AND SERVICES
WITH ANCILLARY OFFICE FOR A PERIOD OF 5 YEARS
LOT 2049 RP IN D.D. 124,
TIN SAM TSUEN, HUNG SHUI KIU, YUEN LONG

SCALE 1:1 000 比例尺

米 METRES 20 0 20 40 米 METRES

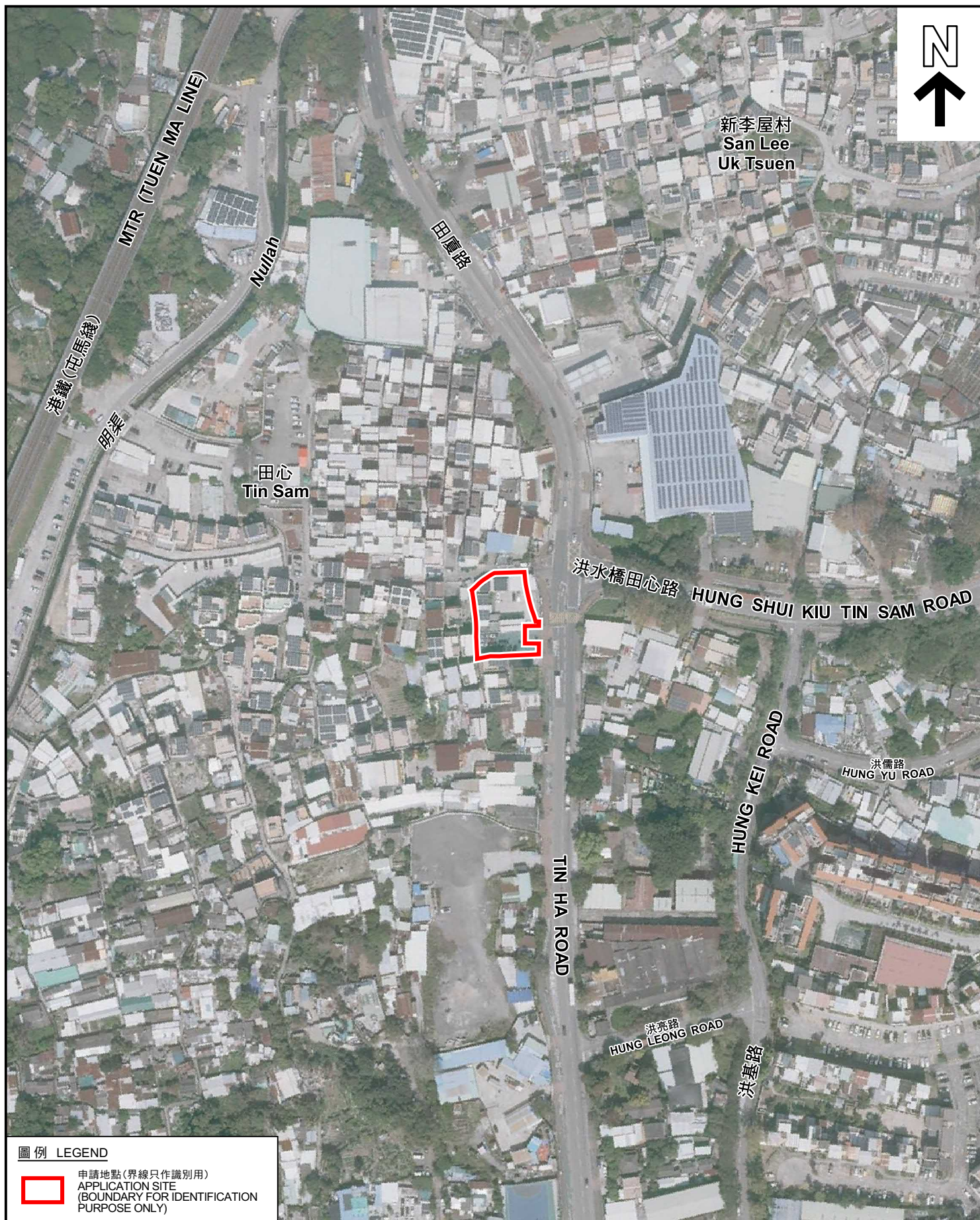
本摘要圖於2022年11月15日擬備，所根據的資料為測量圖編號 6-NW-12C 及 6-NW-12D
EXTRACT PLAN PREPARED ON 15.11.2022
BASED ON SURVEY SHEETS No. 6-NW-12C & 6-NW-12D

規劃署
PLANNING
DEPARTMENT



參考編號
REFERENCE No.
A/HSK/416

圖 PLAN
A-2



圖例 LEGEND



申請地點(界線只作識別用)
APPLICATION SITE
(BOUNDARY FOR IDENTIFICATION
PURPOSE ONLY)

本摘要圖於2022年10月26日擬備，所根據的資料為地政總署於2022年2月14日拍得的航攝照片編號 E148516C
EXTRACT PLAN PREPARED ON 26.10.2022
BASED ON AERIAL PHOTO No.
E148516C TAKEN ON 14.2.2022 BY
LANDS DEPARTMENT

航攝照片 AERIAL PHOTO

臨時商店及服務行業連附屬辦公室(為期5年)
元朗洪水橋田心村丈量約份第124約地段第2049號餘段
TEMPORARY SHOP AND SERVICES
WITH ANCILLARY OFFICE FOR A PERIOD OF 5 YEARS
LOT 2049 RP IN D.D. 124,
TIN SAM TSUEN, HUNG SHUI KIU, YUEN LONG

規劃署
PLANNING
DEPARTMENT



參考編號
REFERENCE No.
A/HSK/416

圖 PLAN
A-3



申請地點界線只作識別用 APPLICATION SITE BOUNDARY FOR IDENTIFICATION PURPOSE ONLY

實地照片 SITE PHOTOS

臨時商店及服務行業連附屬辦公室(為期5年)
元朗洪水橋田心村丈量約份第124約地段第2049號餘段
TEMPORARY SHOP AND SERVICES
WITH ANCILLARY OFFICE FOR A PERIOD OF 5 YEARS
LOT 2049 RP IN D.D. 124,
TIN SAM TSUEN, HUNG SHUI KIU, YUEN LONG

規 劃 署
PLANNING
DEPARTMENT



參考編號
REFERENCE No.
A/HSK/416

圖 PLAN
A-4a

本圖於2022年10月20日擬備，所根據的資料為攝於2022年10月14日的實地照片
PLAN PREPARED ON 20.10.2022
BASED ON SITE PHOTOS
TAKEN ON 14.10.2022



申請地點
APPLICATION SITE



實地照片 SITE PHOTOS

臨時商店及服務行業連附屬辦公室(為期5年)
元朗洪永橋田心村丈量約份第124約地段第2049號餘段
TEMPORARY SHOP AND SERVICES
WITH ANCILLARY OFFICE FOR A PERIOD OF 5 YEARS
LOT 2049 RP IN D.D. 124,
TIN SAM TSUEN, HUNG SHUI KIU, YUEN LONG

規劃署
PLANNING
DEPARTMENT



參考編號
REFERENCE No.
A/HSK/416

圖 PLAN
A-4b

本圖於2022年10月20日擬備，所根據的資料為攝於2022年10月14日的實地照片
PLAN PREPARED ON 20.10.2022
BASED ON SITE PHOTOS
TAKEN ON 14.10.2022