

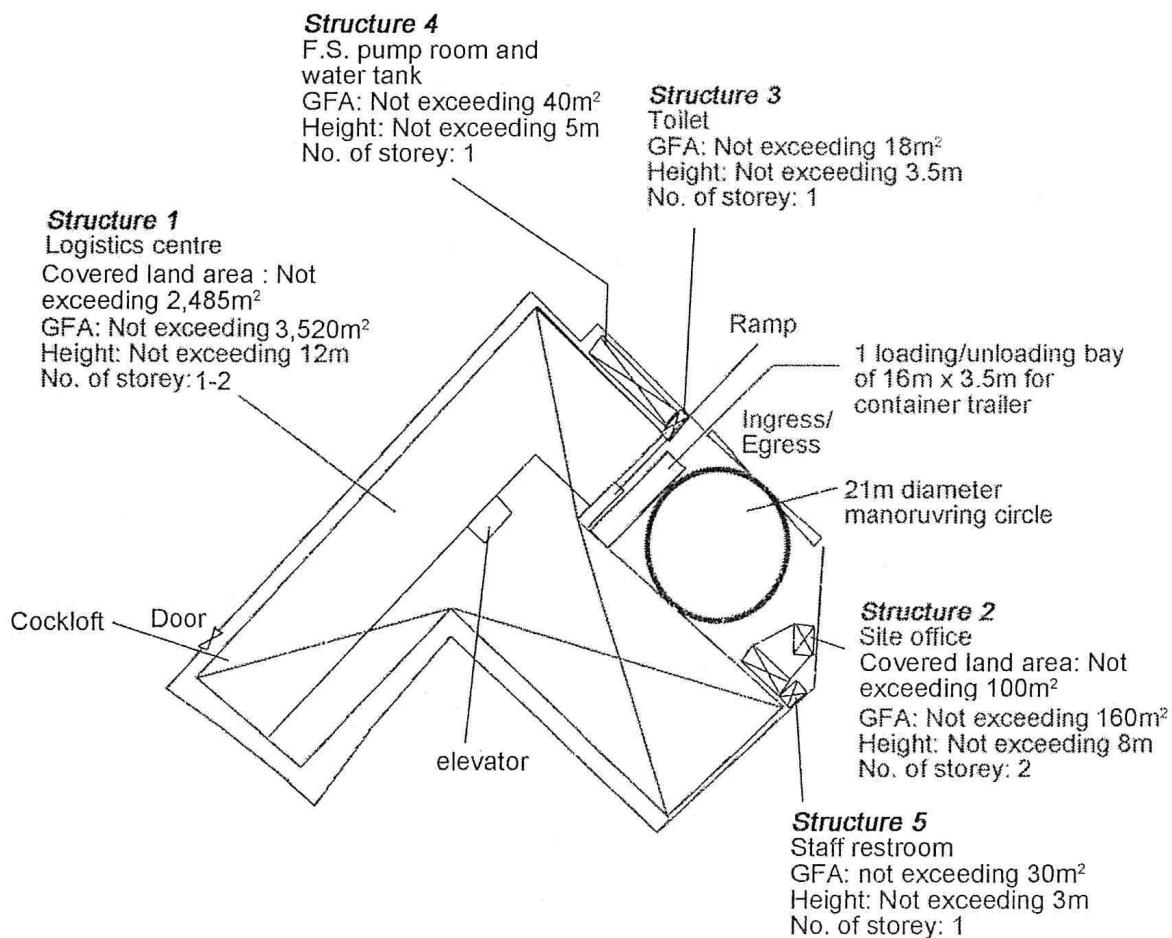
| | | |
|--|--|---|
| <p>Project 項目名稱:</p> <p>Proposed Temporary Logistics Centre for a Period of 3 Years at Lots 1668 (Part), 1970 (Part), 1971 RP (Part), 1973 (Part), 1975 RP (Part), 1978 (Part) & 1979 (Part) in D.D. 125 Ha Tsuen, Yuen Long, N.T.</p> | <p>Drawing Title 圖目:</p> <p>Location Plan</p> <p>Drawing No. 圖號:</p> <p>Figure 2</p> | <p>Remarks 備註:</p> <p>●●● Vehicular access leading to Ping Ha Road</p> <p>Scale 比例:</p> <p>1:7500</p> |
|--|--|---|

(摘錄自申請人於 16.5.2023 呈交的申請書)
(Extract from Applicant's Submission of 16.5.2023)

參考編號
REFERENCE No.
A/HSK/458

繪圖 DRAWING
A-1

N



Project 項目名稱:

Proposed Temporary Logistics Centre for a Period of 3 Years at Lots 1968 (Part), 1970 (Part), 1971 RP (Part), 1973 (Part), 1975 RP (Part), 1978 (Part) & 1979 (Part) in D.D. 125 Ha Tsuen, Yuen Long, N.T.

Drawing Title 圖目:

Proposed Layout Plan

Drawing No. 圖號:

Figure 3

Remarks 備註:

Scale 比例:

1:1000

(摘錄自申請人於 16.5.2023 呈交的申請書)
(Extract from Applicant's
Submission of 16.5.2023)

參考編號
REFERENCE No.
A/HSK/458

繪圖 DRAWING
A-2

APPENDIX I
Proposed Temporary Logistics Centre for a Period of 3 Years at Lots 1968 (Part), 1970 (Part), 1971 RP (Part), 1973 (Part), 1975 RP (Part), 1978 (Part), & 1979 (Part), in D.D. 125 Ha Tsuen, Yuen Long, N.T.

F.S. NOTES:

1. GENERAL

- FIRE SERVICE INSTALLATIONS SHALL BE PROVIDED IN ACCORDANCE WITH THE CODES OF PRACTICE FOR MINIMUM FIRE SERVICE INSTALLATIONS AND EQUIPMENT AND INSPECTION, TESTING AND MAINTENANCE OF INSTALLATIONS AND EQUIPMENT 2012 (COP 2012), FSD CIRCULAR LETTERS AND THE HONG KONG WATERWORKS STANDARD REQUIREMENTS.
- ALL TUBES AND FITTINGS SHALL BE G.M.S. TO BS1387 MEDIUM GRADE WHERE PIPEWORK UP TO $\phi 150\text{mm}$.
- ALL TUBES AND FITTINGS SHALL BE DUCTILE IRON TO BS EN545 K12 WHERE PIPEWORK ABOVE $\phi 150\text{mm}$.
- ALL DRAIN PIPES SHALL BE DISCHARGED TO A CONSPICUOUS POSITION WITHOUT THE POSSIBILITY OF BEING SUBMERGED.
- ALL PUDDLE FLANGES SHALL BE MADE OF DUCTILE IRON
- THE AGGREGATE AREA OF OPENABLE WINDOWS NOT LESS THAN 6.25% OF THE FLOOR AREA OF THE STRUCTURE
- VENTILATION/AIR CONDITIONING SYSTEM NOT TO BE PROVIDED.

2. HOSE REEL SYSTEM

- NEW FIRE HOSE REEL SHALL BE PROVIDED AS INDICATED ON PLAN TO ENSURE THAT EVERY PART OF THE BUILDING CAN BE REACHED BY A LENGTH OF NOT MORE THAN 30m HOSE REEL TUBING.
- THE WATER SUPPLY FOR HOSE REEL SYSTEM WILL BE FED FROM A NEW 2m^3 F.S. FIBREGLASS WATER TANK VIA TWO HOSE REEL PUMPS (DUTY/STANDBY) LOCATED INSIDE FS PUMP ROOM AT EXTERNAL AREA.
- HOSE REEL PUMPS SHALL BE STARTED BY ACTUATION OF ANY BREAKGLASS UNIT FITTED ASIDE EACH HOSE REEL SETS
- ALL FIRE HOSE REEL OUTLETS SHOULD BE HOUSED IN GLASS FRONTED CABINET SECURED UNDER LOCK & KEY.
- ALL FIRE HOSE REEL SHOULD BE PROVIDED WITH FSD APPROVED TYPE INSTRUCTION PLATE & WSD WARNING PLATE
- SECONDARY ELECTRICITY SUPPLY DIRECTLY TEE OFF BEFORE CLP'S INCOMING MAIN SWITCH SHALL BE PROVIDED FOR THE FH/HR PUMPS.

3. AUTOMATIC SPRINKLER SYSTEM

- NEW AUTOMATIC SPRINKLER SYSTEM SHALL BE PROVIDED AND INSTALLED IN ACCORDANCE WITH LPC RULES FOR AUTOMATIC SPRINKLER INSTALLATIONS INCORPORATING BS EN 12845: 2003 (INCLUDING TECHNICAL BULLETINS, NOTES, COMMENTAR AND RECOMMENDATIONS) AND FSD CIRCULAR LETTER NOTES, COMMENTAR AND RECOMMENDATIONS) AND FSD CIRCULAR LETTER NO. 3/2006 AND 3/2012. THE CLASSIFICATION OF THE OCCUPANCIES WILL BE ORDINARY HAZARD GROUP II.
- ONE NEW 135m^3 SPRINKLER WATER TANK WILL BE PROVIDED AS INDICATED ON PLAN. THE TOWN MAIN WATER SUPPLY WILL BE FED FROM SINGLE END.
- TWO NEW SPRINKLER PUMPS (DUTY/STANDBY) AND ONE JOCKEY PUMP SHALL BE PROVIDED IN FS PUMP ROOM LOCATED AT EXTERNAL AREA.
- NEW SPRINKLER CONTROL VALVE SET AND SPRINKLER INLET SHALL BE PROVIDED AS INDICATED ON PLAN.
- A TEST VALVE SHALL BE PROVIDED FOR EACH ZONE OF SPRINKLER PIPE. THIS VALVE SHALL BE AT A CONSPICUOUS POSITION THAT WATER CAN BE DRAINED AWAY EASILY.
- ALL SUBSIDIARY STOP VALVES TO BE ELECTRIC MONITORING TYPE.
- ALL ELECTRIC TYPE VALVES SHOULD GIVE VISUAL SIGNALS TO FIRE SERVICE MAIN SUPERVISORY CONTROL PANEL TO INDICATE THE STATUS (OPEN/CLOSE) OF THE VALVES.
- SECONDARY ELECTRICITY SUPPLY DIRECTLY TEE OFF BEFORE CLP'S INCOMING MAIN SWITCH SHALL BE PROVIDED FOR THE SPRINKLER PUMPS.
- THE SPRINKLER SYSTEM DESIGN IS BASED ON THE FOLLOWINGS:
HAZARD CLASS : ORDINARY HAZARD GROUP II
TYPE OF STORAGE : POST-PALLET (ST2)
STORAGE CATEGORY : CATEGORY I
MAXIMUM STORAGE HEIGHT : 3.5m
SPRINKLER PROTECTION : CEILING PROTECTION ONLY

4. FIRE ALARM SYSTEM

- NEW FIRE ALARM SYSTEM SHALL BE PROVIDED IN ACCORDANCE WITH BS 5839-1:2002 +A2:2008 AND FSD CIRCULAR LETTERS NO. 1/2009 & 3/2010.
- NEW BREAKGLASS UNITS AND FIRE ALARM BELLS SHALL BE PROVIDED AT ALL NEW FIRE HOSE REEL POINTS. THE FIRE ALARM INSTALLATION WILL BE INTEGRATED WITH THE HOSE REEL SYSTEM.

5. EMERGENCY LIGHTING

- EMERGENCY LIGHTING SHALL BE PROVIDED IN ACCORDANCE WITH 'BS 5226-PART 1 : 2011 AND BS EN 1838 : 2013', COVERING ALL AREA. EMERGENCY LIGHTINGS SHALL BE BACKED UP BY BUILT-IN BATTERY AND CAPABLE OF MAINTAINING FUNCTION OF NOT LESS THAN 2 HOURS IN CASE OF POWER FAILURE

6. EXIT SIGN

- ALL EXIT SIGNS/DIRECTIONAL EXIT SIGNS SHALL BE PROVIDED IN ACCORDANCE WITH SECTION 5.10 OF COP 2012 AND FSD CIRCULAR LETTER NO. 5/2008, FOR THE BUILDING. EXIT SIGNS/DIRECTIONAL EXIT SIGNS SHALL BE BACKED UP BY BUILT-IN BATTERY AND CAPABLE OF MAINTAINING FUNCTION OF NOT LESS THAN 2 HOURS IN CASE OF POWER FAILURE.

7. PORTABLE APPLIANCES

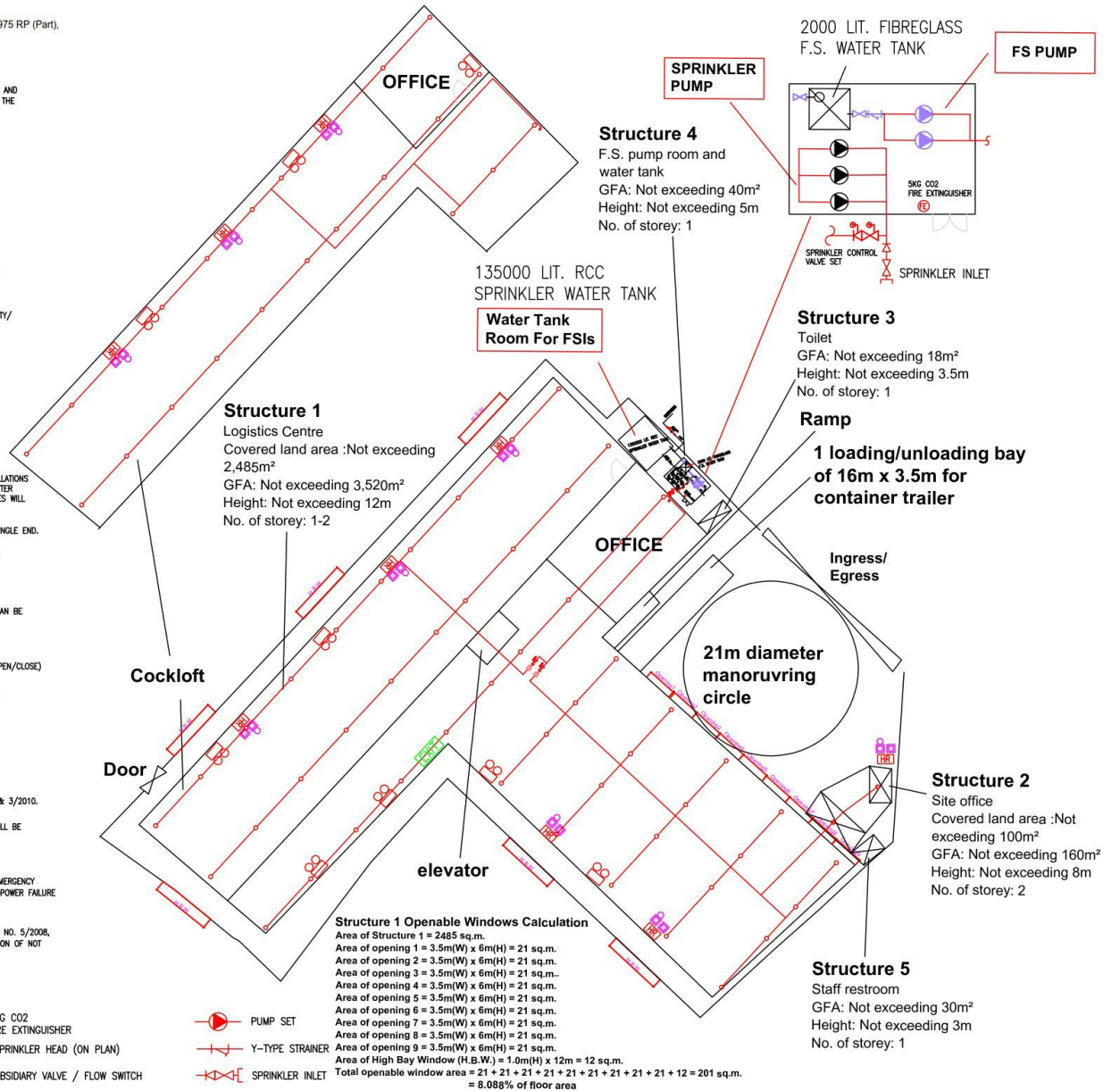
- PORTABLE HAND OPERATED APPLIANCES SHALL BE PROVIDED AS INDICATED ON PLAN.

LEGEND

- HOSE REEL
 BREAK GLASS UNIT
 FIRE ALARM BELL
 EMERGENCY LIGHT
 EXIT SIGN
 NON-RETURN VALVE

- SKG CO2 FIRE EXTINGUISHER
 SPRINKLER HEAD (ON PLAN)
 SUBSIDIARY VALVE / FLOW SWITCH

- PUMP SET
 Y-TYPE STRAINER
 SPRINKLER INLET



PROJECT :
Proposed Temporary Logistics Centre for a Period of 3 Years at
Lots 1968 (Part), 1970 (Part), 1971 RP (Part), 1973 (Part), 1975 RP
(Part), 1978 (Part), & 1979 (Part), in D.D. 125 Ha Tsuen, Yuen
Long, N.T.

DRAWING TITLE :
F.S. Notes, Legend,
Fire Service Installation
Layout Plan

| REV | DESCRIPTION | DATE |
|-----|-------------|------|
| | | |
| | | |
| | | |

ARCHITECT :

CONSULTANT :

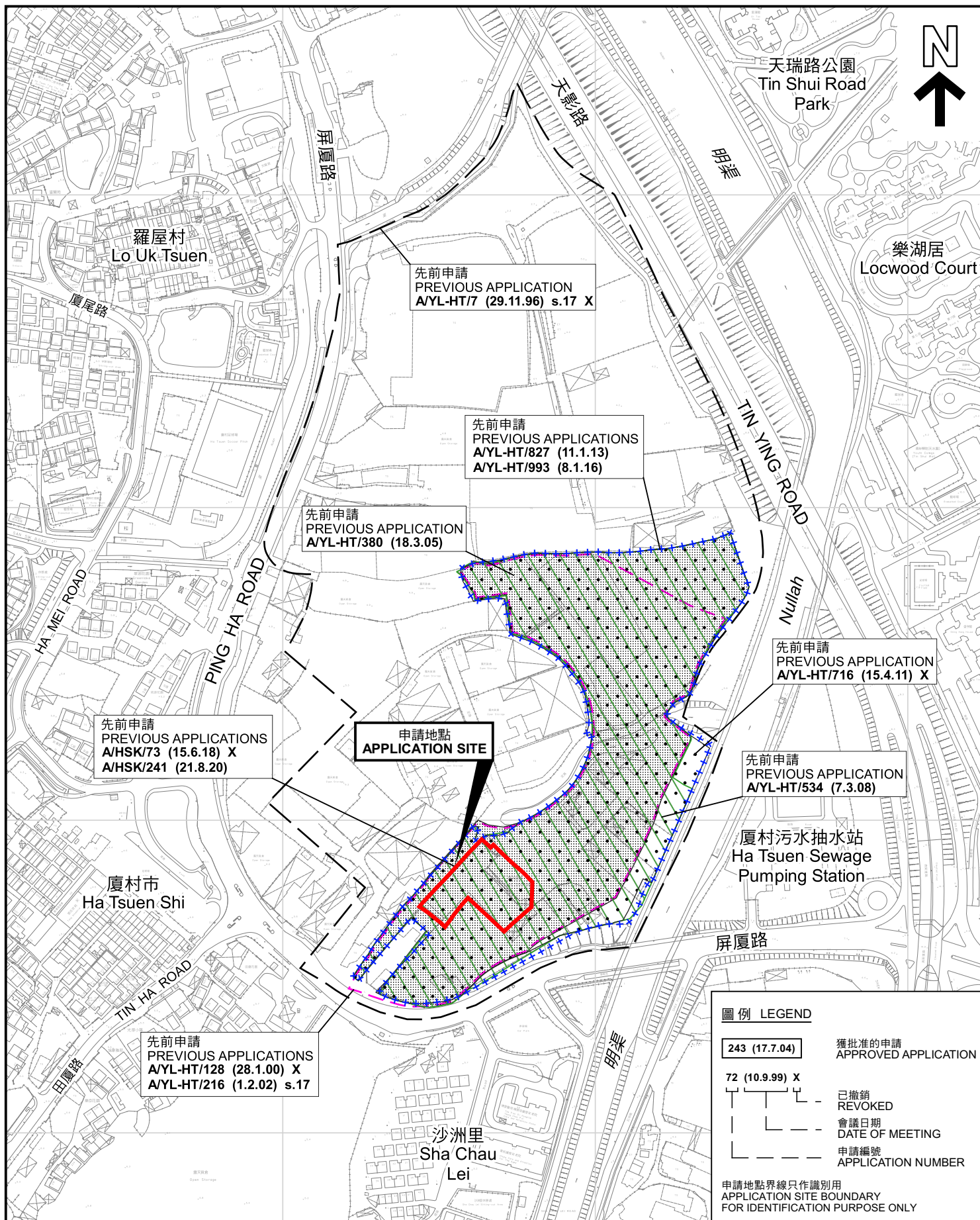
FIRE SERVICE CONTRACTOR :
**Century Fire Service
Engineering Co., Ltd.**

| NAME | DATE | DRAWING NO : | REV. |
|--------------------|-------------|-------------------------------------|----------|
| DRAWN BY : C.K. NG | 12 Mar 2021 | FS-01 | 0 |
| CHECKED BY : | | SCALE : 1:250 (A4) | |
| APPROVED BY : | | SOURCE : B.O.O. Ref. F.S.D. Ref. | |

(摘錄自申請人於 31.5.2023 呈交的進一步資料)
(Extract from Applicant's Further
Information Submitted on 31.5.2023)

參考編號
REFERENCE No.
A/HSK/458

繪圖 DRAWING
A-4



先前申請圖 PREVIOUS APPLICATIONS PLAN

臨時物流中心的規劃許可續期(為期3年)
新界元朗厦村丈量約份第125約

地段第1968號(部分)、第1970號(部分)、第1971號餘段(部分)、
第1973號(部分)、第1975號餘段(部分)、第1978號(部分)及第1979號(部分)
RENEWAL OF PLANNING APPROVAL FOR TEMPORARY LOGISTICS CENTRE

FOR A PERIOD OF 3 YEARS

LOTS 1968 (PART), 1970 (PART), 1971 RP (PART),
1973 (PART), 1975 RP (PART), 1978 (PART) AND 1979 (PART)
IN D.D.125, HA TSUEN, YUEN LONG, NEW TERRITORIES
SCALE 1 : 4 000 比例尺

米 METRES 80 0 80 160 米 METRES

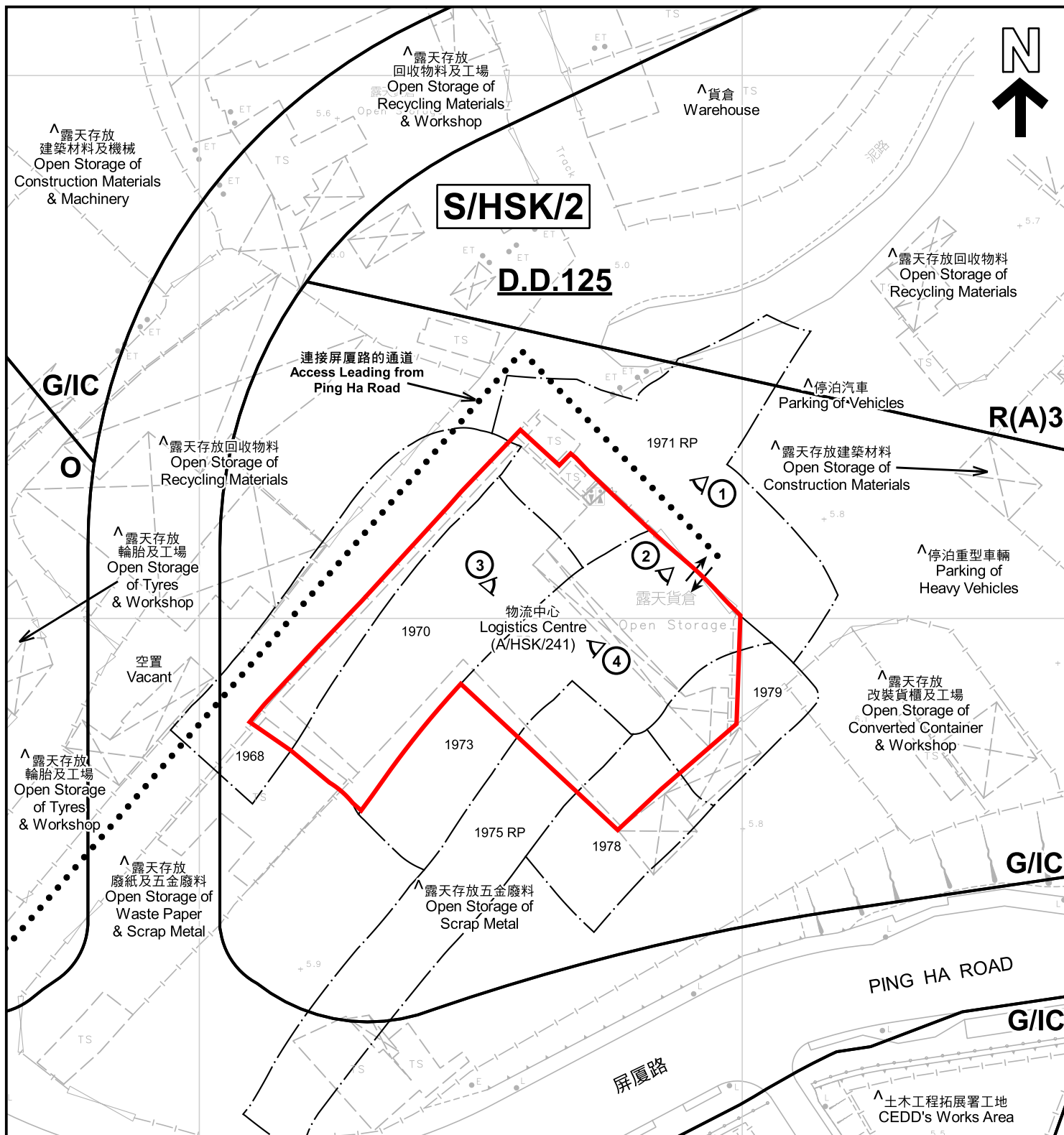
本摘要圖於2023年6月30日擬備，所根據的
資料為測量圖編號 6-NW-2D、3C、7B、7D、
8A 及 8C
EXTRACT PLAN PREPARED ON 30.6.2023
BASED ON SURVEY SHEETS No.
6-NW-2D, 3C, 7B, 7D, 8A & 8C

規劃署
PLANNING
DEPARTMENT



參考編號
REFERENCE No.
A/HSK/458

圖 PLAN
A-1b



註釋 Notes:

- (1) 2023年5月30日勘測的土地用途
Land uses shown on this plan are in accordance with the land use survey conducted by the Planning Department on 30.5.2023
- (2) * 土地用途跟1992年3月勘測的土地用途一致
Indicates that the use is the same as that revealed by the land use survey conducted by the Planning Department in Mar 1992
- (3) ^ 土地用途跟1992年3月勘測的土地用途有別
Indicates that the use is different from that revealed by the land use survey conducted by the Planning Department in Mar 1992

圖例 LEGEND

- 申請地點 (界線只作識別用)
APPLICATION SITE (BOUNDARY FOR IDENTIFICATION PURPOSE ONLY)
- R(A) 住宅(甲類)
RESIDENTIAL (GROUP A)
- G/I/C 政府、機構或社區
GOVERNMENT, INSTITUTION OR COMMUNITY
- 休憩用地
OPEN SPACE
- 實地照片的觀景點
VIEWING POINT OF SITE PHOTO
- 入口/出口
INGRESS / EGRESS

平面圖 SITE PLAN

臨時物流中心的規劃許可續期(為期3年)
新界元朗厦村丈量約份第125約

地段第1968號(部分)、第1970號(部分)、第1971號餘段(部分)、
第1973號(部分)、第1975號餘段(部分)、第1978號(部分)及第1979號(部分)
RENEWAL OF PLANNING APPROVAL FOR TEMPORARY LOGISTICS CENTRE
FOR A PERIOD OF 3 YEARS
LOTS 1968 (PART), 1970 (PART), 1971 RP (PART),
1973 (PART), 1975 RP (PART), 1978 (PART) AND 1979 (PART)
IN D.D.125, HA TSUEN, YUEN LONG, NEW TERRITORIES
SCALE 1:1 000 比例尺

米 METRES 20 0 20 40 米 METRES

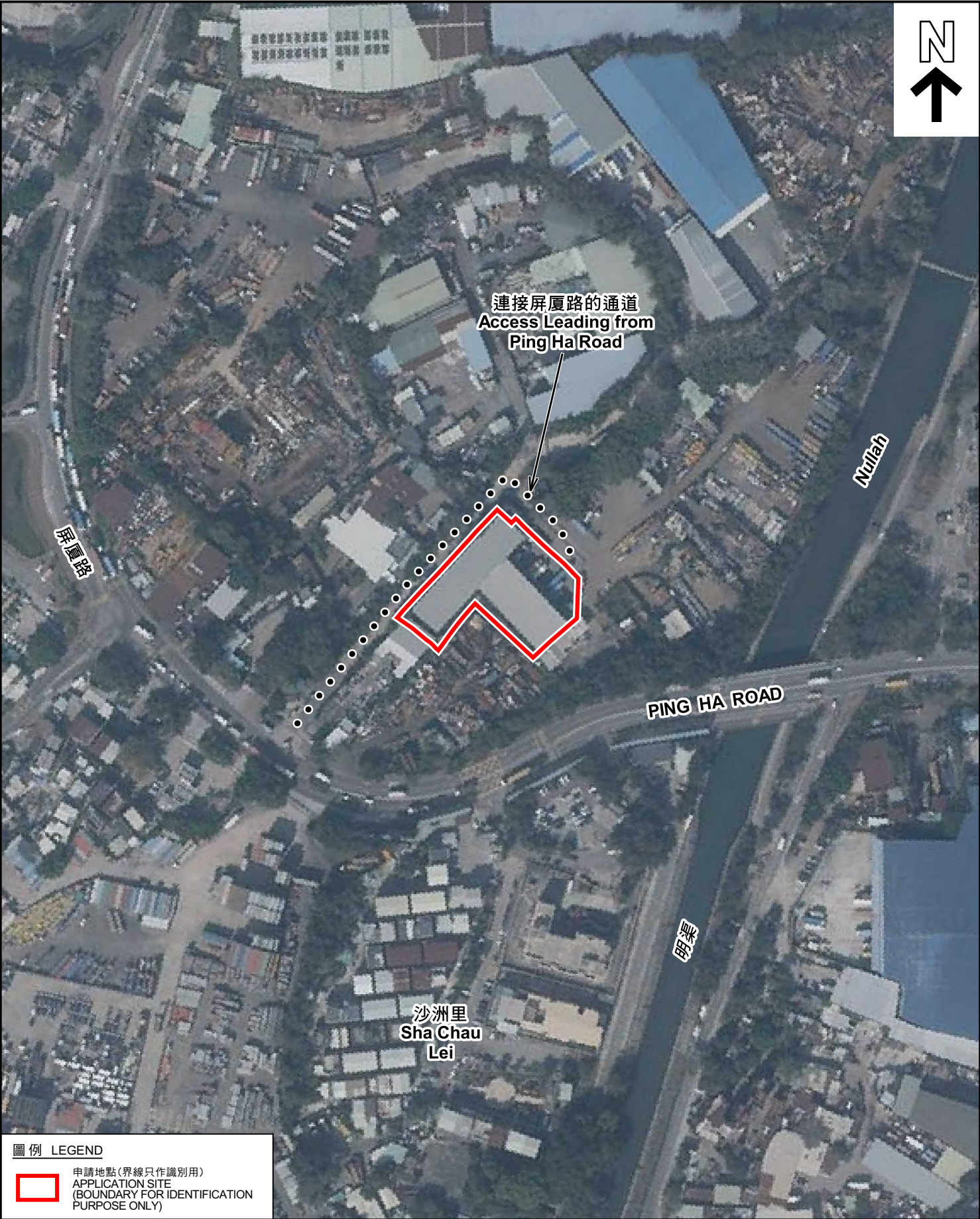
規劃署
PLANNING
DEPARTMENT



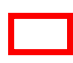
參考編號
REFERENCE No.
A/HSK/458

圖 PLAN
A-2

本摘要圖於2023年6月28日擬備，所根據的資料為測量圖編號 6-NW-7B & 6-NW-7D
EXTRACT PLAN PREPARED ON 28.6.2023
BASED ON SURVEY SHEETS No.
6-NW-7B & 6-NW-7D



圖例 LEGEND

 申請地點(界線只作識別用)
APPLICATION SITE
(BOUNDARY FOR IDENTIFICATION
PURPOSE ONLY)

本摘要圖於2023年6月28日擬備，所根據
的資料為地政總署於2022年1月19日拍得
的航攝照片編號 E147191C
EXTRACT PLAN PREPARED ON 28.6.2023
BASED ON AERIAL PHOTO No.
E147191C TAKEN ON 19.1.2022
BY LANDS DEPARTMENT

航攝照片 AERIAL PHOTO

臨時物流中心的規劃許可續期(為期3年)
新界元朗厦村丈量約份第125約
地段第1968號(部分)、第1970號(部分)、第1971號餘段(部分)、
第1973號(部分)、第1975號餘段(部分)、第1978號(部分)及第1979號(部分)
RENEWAL OF PLANNING APPROVAL FOR TEMPORARY LOGISTICS CENTRE
FOR A PERIOD OF 3 YEARS
LOTS 1968 (PART), 1970 (PART), 1971 RP (PART),
1973 (PART), 1975 RP (PART), 1978 (PART) AND 1979 (PART)
IN D.D.125, HA TSUEN, YUEN LONG, NEW TERRITORIES

規 劃 署
PLANNING
DEPARTMENT



參考編號
REFERENCE No.
A/HSK/458

圖 PLAN
A-3



實地照片 SITE PHOTOS

臨時物流中心的規劃許可續期(為期3年)
 新界元朗厦村丈量約份第125約
 地段第1968號(部分)、第1970號(部分)、第1971號餘段(部分)、
 第1973號(部分)、第1975號餘段(部分)、第1978號(部分)及第1979號(部分)
 RENEWAL OF PLANNING APPROVAL FOR TEMPORARY LOGISTICS CENTRE
 FOR A PERIOD OF 3 YEARS
 LOTS 1968 (PART), 1970 (PART), 1971 RP (PART),
 1973 (PART), 1975 RP (PART), 1978 (PART) AND 1979 (PART)
 IN D.D.125, HA TSUEN, YUEN LONG, NEW TERRITORIES

規劃署
 PLANNING
 DEPARTMENT



參考編號
 REFERENCE No.
 A/HSK/458

圖 PLAN
 A-4

本圖於2023年6月28日擬備，所根據的
 資料為攝於2023年5月30日的實地照片
 PLAN PREPARED ON 28.6.2023
 BASED ON SITE PHOTOS
 TAKEN ON 30.5.2023