

	Structures	Cover Area	GFA
1	Metal Structure (6,377.4m <sup>2</sup> ) + Canopy (210.7m <sup>2</sup> ) + Upper Level Office (40m <sup>2</sup> )	6,377.4m <sup>2</sup> + 210.7m <sup>2</sup> = <u>6,588.1m<sup>2</sup></u>	6,588.1m <sup>2</sup> + 40m <sup>2</sup> = <u>6,628.1m<sup>2</sup></u>
2	2-storey Metal Structure (391m <sup>2</sup> x 2 = 782m <sup>2</sup> ) + Canopy (10.5m <sup>2</sup> )	391m <sup>2</sup> + 10.5m <sup>2</sup> = <u>401.5m<sup>2</sup></u>	391m <sup>2</sup> x 2 + 10.5m <sup>2</sup> = <u>792.5m<sup>2</sup></u>
3	2-sided Open Shed Cover	140.4m <sup>2</sup>	140.4m <sup>2</sup>
4	2-storey Container Structure (Office on 1/F, Water Tank and Meter Room on G/F) (107.7m <sup>2</sup> x 2 = 215.4m <sup>2</sup> )	107.7m <sup>2</sup>	107.7m <sup>2</sup> x 2 = <u>215.4m<sup>2</sup></u>
5	Container-structured Toilet	11.2m <sup>2</sup>	11.2m <sup>2</sup>
6	Meter Room	5.1m <sup>2</sup>	5.1m <sup>2</sup>
7	Container-structured Toilet	3.7m <sup>2</sup>	3.7m <sup>2</sup>
8	Security Room	21m <sup>2</sup>	21m <sup>2</sup>
Total:		7,278.7m <sup>2</sup>	7,817.4m <sup>2</sup>

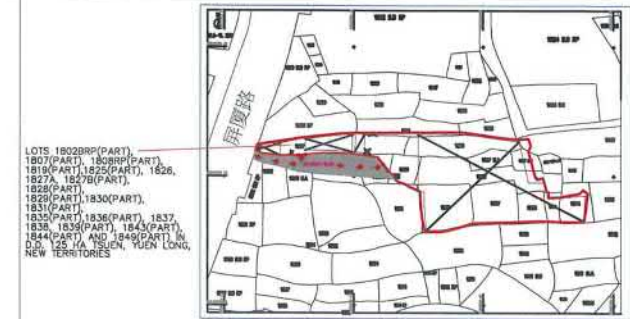
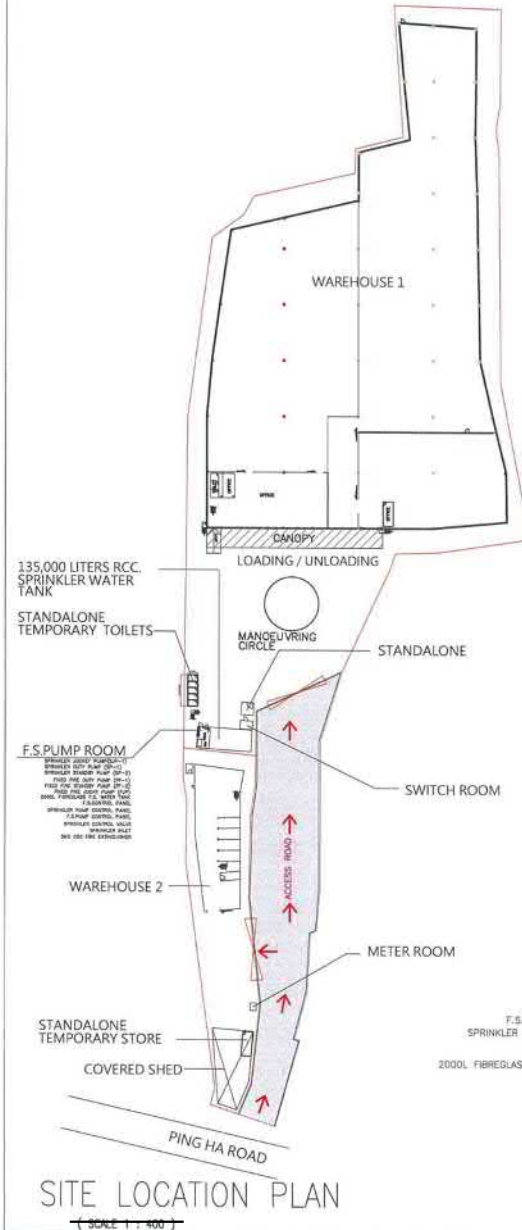
(摘錄自申請人於 11. 12. 2024 呈交的申請書)  
(Extract from Applicant's  
Submission of 11.12.2024)

參考編號  
REFERENCE No.  
A/HSK/541

繪圖 DRAWING  
A-1

# FIRE SERVICE NOTES :

- A MODIFIED HOSE REEL SYSTEM WITH A 2,000 L F.S. TANK SHALL BE PROVIDED TO THE SUBJECT BUILDINGS IN ACCORDANCE WITH PARA 5.14 OF THE CODE OF PRACTICE FOR MINIMUM FIRE SERVICE INSTALLATIONS AND EQUIPMENT 2022. HOSE REEL SHALL BE PROVIDED TO ENSURE THAT EVERY PART OF THE BUILDINGS WHERE CAN BE REACHED BY A LENGTH OF NOT MORE THAN 30M OF HOSE REEL TUBING.
  - HOSE REEL SHALL BE PROVIDED AT POSITIONS AS INDICATED ON PLANS.
  - NO FIRE SERVICE INLET TO BE PROVIDED FOR MODIFIED HOSE REEL SYSTEM.
  - TWO FIXED FIRE PUMPS (DUTY/STANDY) TO BE PROVIDED.
- FIRE ALARM SYSTEM SHALL BE PROVIDED IN ACCORDANCE WITH BS 5839-1 : 2017 AND THE FSD CIRCULAR LETTER NO. 6/2021. ACTUATING POINT AND ONE AUDIO WARNING DEVICE TO BE LOCATED AT EACH HOSE REEL POINT. VISUAL ALARM SIGNALS TO BE PROVIDED. ACTUATING POINT SHALL INCLUDE FACILITIES FOR FIRE PUMP START AND AUDIO/VISUAL WARNING DEVICE INITIATION.
  - FIRE ALARM PANEL TO BE PROVIDED AND LOCATED INSIDE F.S. PUMP ROOM.
- SUFFICIENT EMERGENCY LIGHTING WITH 2 HOURS BACK UP BATTERY TO BE PROVIDED TO THE BUILDINGS IN ACCORDANCE WITH BS 5266 - 1:2016, BS EN 1838-2013 AND THE FSD CIRCULAR LETTER NO. 4/2021.
- SUFFICIENT EXIT SIGN / DIRECTIONAL SIGN TO BE PROVIDED IN ACCORDANCE WITH BS 5266 - 1:2016 AND FSD CIRCULAR LETTER NO. 5/2008.
- FIRE EXTINGUISHERS SHALL BE PROVIDED AS INDICATED ON PLANS.
- WHEN A VENTILATION/AIR CONDITIONING CONTROL SYSTEM TO THE AREAS/BUILDING IS REQUIRED TO BE PROVIDED, IT SHALL STOP MECHANICALLY INDUCED AIR MOVEMENT WITHIN A DESIGNATED FIRE COMPARTMENT.
- AUTOMATIC SPRINKLER SYSTEM SHALL BE PROVIDED TO THE ENTIRE BUILDING/STRUCTURE IN ACCORDANCE WITH LPC RULES INCORPORATING BS EN 12845 : 2015 AND FSD CIRCULAR LETTER 5/2020 EXCEPT E&M PLANT ROOMS. SPRINKLER SHALL NOT BE PROVIDED TO STANDALONE TEMPORARY TOILETS / OFFICES / STORES / GUARD HOUSE WHERE TOTAL FLOOR AREAS LESS THAN 230 SQUARE METRES. SPRINKLER SHALL NOT BE PROVIDED TO AREAS OF COVERED SHED AS THOSE ARE METAL STRUCTURE WITH 2 SIDES OPENING.
  - HAZARD CLASSIFICATION : OH3
  - STORED PRODUCTS AND CATEGORIES : CATEGORY ( 1 )
  - STORAGE CONFIGURATION : FREE STANDING (ST1) & POST-PALLET STORAGE (ST2)
  - STORAGE HEIGHT NOT EXCEEDING : 4M & 3.5M
  - STORAGE SHOULD BE CONFINED TO BLOCKS NOT EXCEEDING 50 SQ M. IN PLAN AREA FOR CATEGORY 1.
  - STORAGE BLOCKS SHOULD BE SEPARATED BY AISLES NO LESS THAN 2.4M WIDE.
  - ONE NUMBER 135,000 LITRES SPRINKLER WATER TANK TO BE PROVIDED AS INDICATED ON PLANS.
  - SPRINKLER PUMPS, SPRINKLER CONTROL VALVES AND SPRINKLER INLETS SHALL BE PROVIDED AS INDICATED ON PLANS.
- SECONDARY SOURCE OF POWER SUPPLY FOR FIRE SERVICE INSTALLATIONS TO BE PROVIDED BY CONNECTION BEFORE THE MAIN SWITCH WITH AUTOMATIC CHANGE-OVER DEVICE AND SATISFACTION OF THE DIRECTOR OF FIRE SERVICES.
- SMOKE EXTRACTION SYSTEM SHALL NOT BE PROVIDED WHEREAS THE AGGREGATE AREA OF OPENABLE WINDOWS OF THE COMPARTMENT EXCEEDS 6.25% OF THE FLOOR AREA OF THAT COMPARTMENT IN WAREHOUSES.



BLOCK PLAN  
(NOT TO SCALE)

## LEGEND

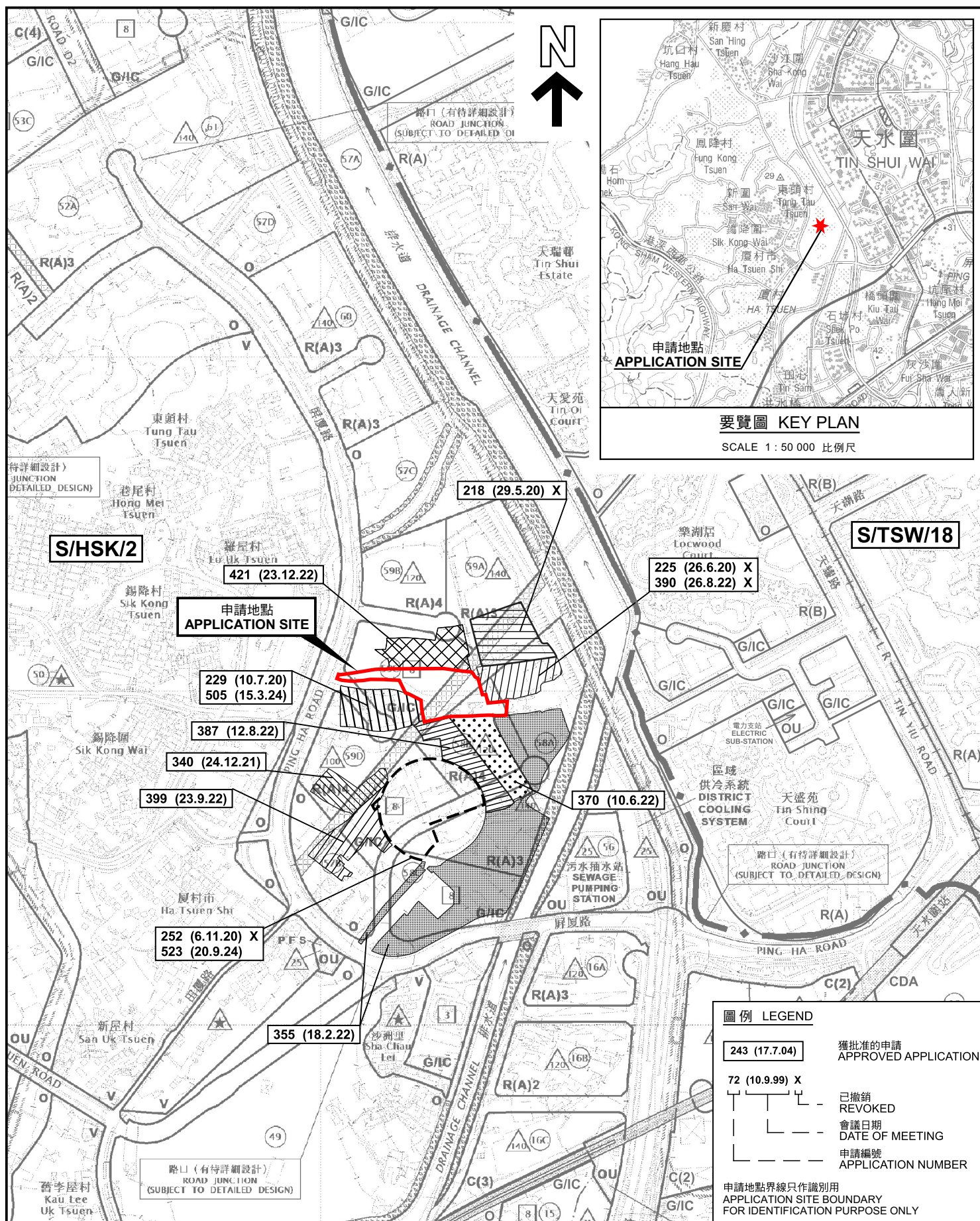
- COVERED SHED
- METAL GATE
- FIRE ALARM BELL
- VISUAL FIRE ALARM
- MANUAL FIRE ALARM CALL POINT (BREAK GLASS TYPE)
- EXIT SIGN
- SLIDING DOOR
- HOSE REEL SET
- FIXED FIRE PUMP/SPRINKLER PUMP
- SPRINKLER CONTROL VALVE
- SPRINKLER INLET
- BL W/ CO2 FIRE EXTINGUISHER
- SAND BUCKET
- 5KG CO2 FIRE EXTINGUISHER
- F.S. CONTROL PANEL
- SPRINKLER / F.S. PUMP CONTROL PANEL

PROJECT:  
LOTS 1802BRP(PART), 1807(PART), 1808RP(PART), 1818(PART), 1825(PART), 1826, 1827A, 1827B(PART), 1828(PART), 1829(PART), 1830(PART), 1831(PART), 1832(PART), 1836(PART), 1837, 1838, 1839(PART), 1843(PART), 1844(PART) AND 1848(PART) IN D.D. 125 HA TSUEN, YUEN LONG, NEW TERRITORIES

TITLE:  
F.S. NOTES, LEGEND, DETAIL OF F.S. PUMP ROOM, DETAIL OF STANDALONE TEMPORARY OFFICE, BLOCK PLAN AND SITE LOCATION PLAN  
(RNTPC PAPER NO. A/HSK/541)

SCALE: 1:400	DRAWN BY: MR CHEUNG
DATE: 27-02-2025	DESIGNED BY: MR CHEUNG
DWG. NO: FS/01	CHECKED BY: MR CHEUNG
CONTRACT NO: 97540626	SHEET: 5
REVISION: 1	



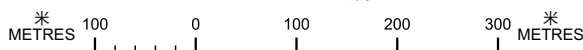


本摘要圖於2025年3月5日擬備，  
所根據的資料為於2018年10月16日  
核准的分區計劃大綱圖編號S/HSK/2  
EXTRACT PLAN PREPARED ON 5.3.2025  
BASED ON OUTLINE ZONING PLAN No.  
S/HSK/2 APPROVED ON 16.10.2018

### 位置圖及同類申請 LOCATION PLAN WITH SIMILAR APPLICATIONS

臨時存放建築材料及貨櫃、物流中心及附屬工場（為期3年）  
元朗厦村丈量約份第125約多個地段  
TEMPORARY STORAGE OF CONSTRUCTION MATERIALS AND  
CONTAINERS, LOGISTICS CENTRE AND ANCILLARY WORKSHOP  
FOR A PERIOD OF 3 YEARS  
VARIOUS LOTS IN D.D. 125, HA TSUEN, YUEN LONG

SCALE 1 : 7 500 比例尺



圖例 LEGEND

**243 (17.7.04)**  
 獲批准的申請  
 APPROVED APPLICATION  
  
**72 (10.9.99) X**  
 已撤銷  
 REVOKED  
  
 會議日期  
 DATE OF MEETING  
  
 申請編號  
 APPLICATION NUMBER

申請地點界線只作識別用  
APPLICATION SITE BOUNDARY  
FOR IDENTIFICATION PURPOSE ONLY

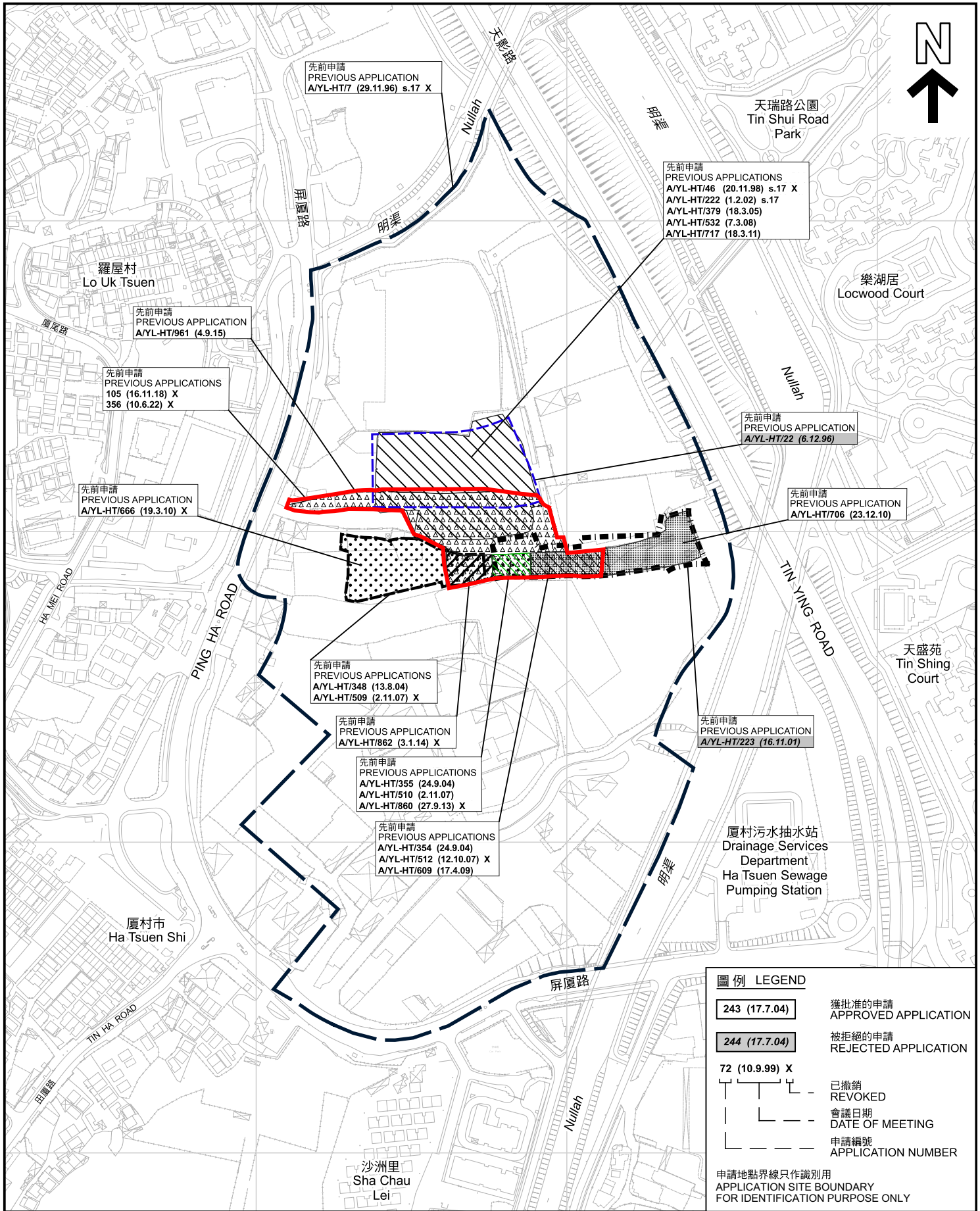
規劃署  
PLANNING  
DEPARTMENT



參考編號  
REFERENCE No.  
A/HSK/541

PLAN  
A-1a





本摘要圖於2025年3月5日擬備，  
所根據的資料為測量圖編號  
6-NW-2D、3C、7B、7D、8A及8C  
EXTRACT PLAN PREPARED ON 5.3.2025  
BASED ON SURVEY SHEETS No.  
6-NW-2D, 3C, 7B, 7D, 8A & 8C

**先申請圖 PREVIOUS APPLICATIONS PLAN**  
臨時存放建築材料及貨櫃、物流中心及附屬工場（為期3年）  
元朗厦村丈量約份第125約多個地段  
TEMPORARY STORAGE OF CONSTRUCTION MATERIALS AND  
CONTAINERS, LOGISTICS CENTRE AND ANCILLARY WORKSHOP  
FOR A PERIOD OF 3 YEARS  
VARIOUS LOTS IN D.D.125, HA TSUEN, YUEN LONG

SCALE 1 : 4 000 比例尺

米 80 0 80 160 米  
METRES

**規劃署**  
**PLANNING**  
**DEPARTMENT**

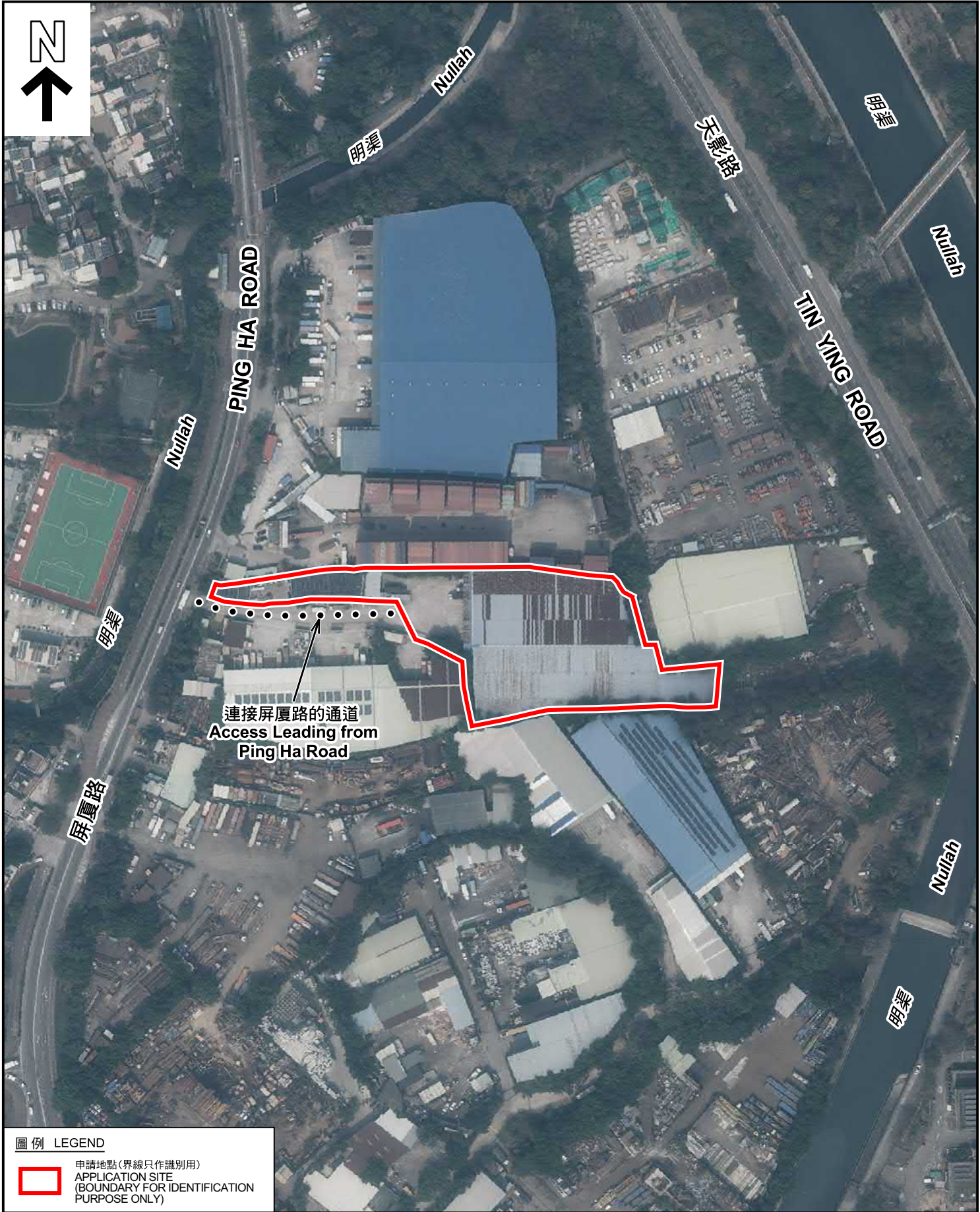
參考編號  
REFERENCE No.  
**A/HSK/541**

圖 PLAN  
**A-1b**









圖例 LEGEND

 申請地點(界線只作識別用)  
APPLICATION SITE  
(BOUNDARY FOR IDENTIFICATION  
PURPOSE ONLY)

本摘要圖於2025年3月5日擬備，所根據  
的資料為地政總署於2023年2月24日拍得  
的航攝照片編號 E187397C  
EXTRACT PLAN PREPARED ON 5.3.2025  
BASED ON AERIAL PHOTO No.  
E187397C TAKEN ON 24.2.2023  
BY LANDS DEPARTMENT

航攝照片 AERIAL PHOTO  
臨時存放建築材料及貨櫃、物流中心及附屬工場(為期3年)  
元朗廈村丈量約份第125約多個地段  
TEMPORARY STORAGE OF CONSTRUCTION MATERIALS AND  
CONTAINERS, LOGISTICS CENTRE AND ANCILLARY WORKSHOP  
FOR A PERIOD OF 3 YEARS  
VARIOUS LOTS IN D.D.125, HA TSUEN, YUEN LONG

規 劃 署  
PLANNING  
DEPARTMENT



參考編號  
REFERENCE No.  
A/HSK/541

圖 PLAN  
A-3





申請地點界線只作識別用 APPLICATION SITE BOUNDARY FOR IDENTIFICATION PURPOSE ONLY

### 實地照片 SITE PHOTOS

臨時存放建築材料及貨櫃、物流中心及附屬工場(為期3年)  
元朗廈村丈量約份第125約多個地段  
TEMPORARY STORAGE OF CONSTRUCTION MATERIALS AND  
CONTAINERS, LOGISTICS CENTRE AND ANCILLARY WORKSHOP  
FOR A PERIOD OF 3 YEARS  
VARIOUS LOTS IN D.D.125, HA TSUEN, YUEN LONG

規 劃 署  
PLANNING  
DEPARTMENT



參考編號  
REFERENCE No.  
A/HSK/541

圖 PLAN  
A-4a

本圖於2025年3月5日擬備，所根據的  
資料為攝於2024年12月20日及  
2025年1月3日的實地照片  
PLAN PREPARED ON 5.3.2025  
BASED ON SITE PHOTOS  
TAKEN ON 20.12.2024 AND 3.1.2025





### 實地照片 SITE PHOTOS

臨時存放建築材料及貨櫃、物流中心及附屬工場(為期3年)  
元朗廈村丈量約份第125約多個地段  
TEMPORARY STORAGE OF CONSTRUCTION MATERIALS AND  
CONTAINERS, LOGISTICS CENTRE AND ANCILLARY WORKSHOP  
FOR A PERIOD OF 3 YEARS  
VARIOUS LOTS IN D.D.125, HA TSUEN, YUEN LONG

規 劃 署  
PLANNING  
DEPARTMENT



參考編號  
REFERENCE No.  
A/HSK/541

圖 PLAN  
A-4b

本圖於2025年3月5日擬備，所根據的  
資料為攝於2024年12月20日及  
2025年1月3日的實地照片  
PLAN PREPARED ON 5.3.2025  
BASED ON SITE PHOTOS  
TAKEN ON 20.12.2024 AND 3.1.2025