

**Legend**

- ..... Visitor (Church) Path
- ..... Customer (Café) Path

**Location**

D.D.C.C.L 408 s.A. and D.D.C.C.L 409  
R.P. at 87-89 Hing Lung Main Street,  
Cheung Chau, Hong Kong

**Figure No.**

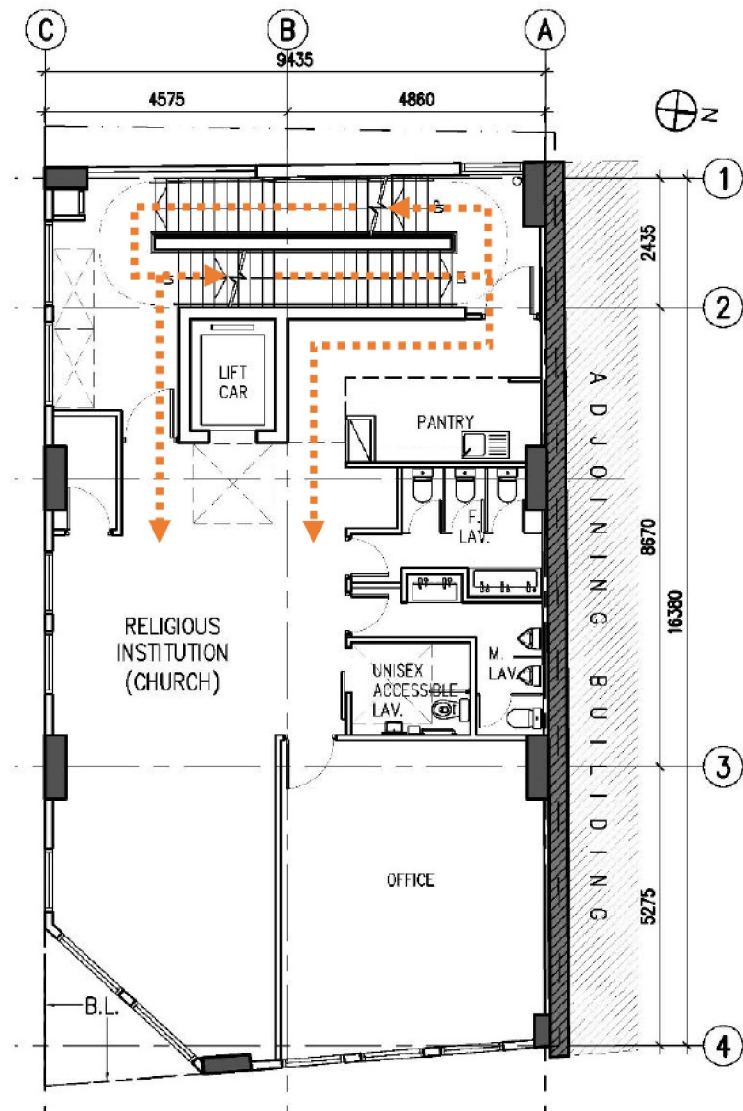
**Figure Title**

**Scale**

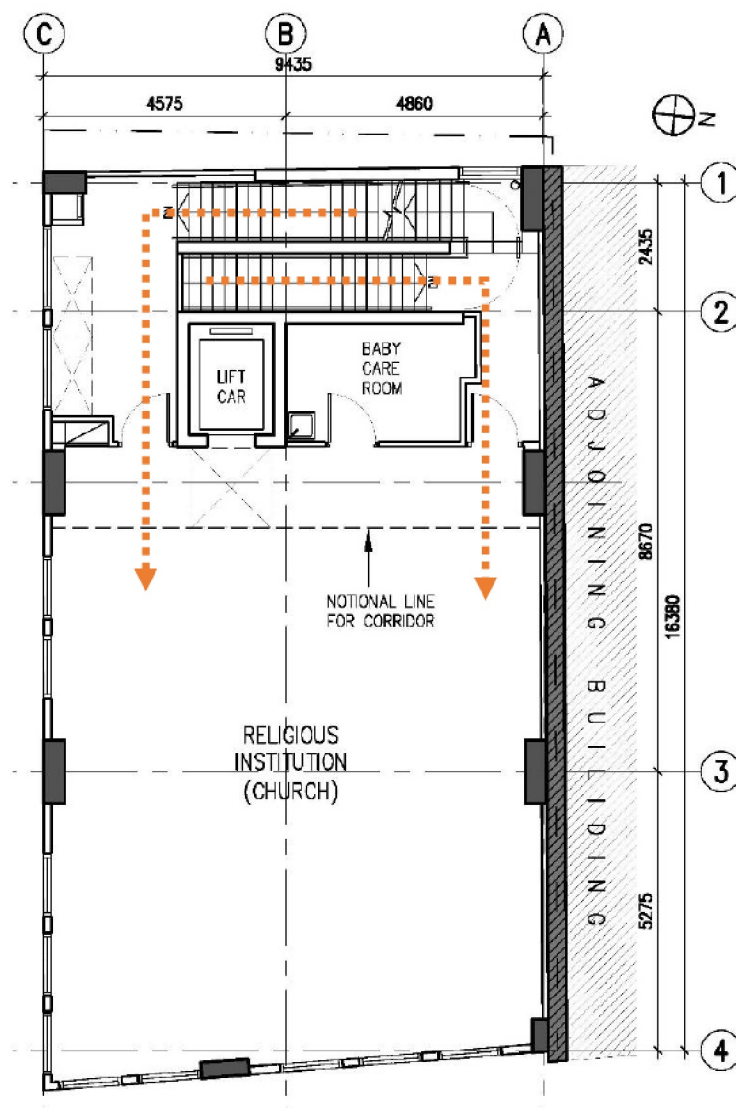
**FIGURE 9**

**Proposed Ground Floor Plan**

Not to scale



<b>Legend</b> ..... Visitor (Church) Path		<b>Location</b> D.D.C.C.L 408 s.A. and D.D.C.C.L 409 R.P. at 87-89 Hing Lung Main Street, Cheung Chau, Hong Kong
<b>Figure No.</b>	<b>Figure Title</b>	<b>Scale</b>
<b>FIGURE 10</b>	<b>Proposed First Floor Plan</b>	Not to scale



#### Legend

..... Visitor (Church) Path

#### Location

D.D.C.C.L 408 s.A. and D.D.C.C.L 409  
R.P. at 87-89 Hing Lung Main Street,  
Cheung Chau, Hong Kong

#### Figure No.

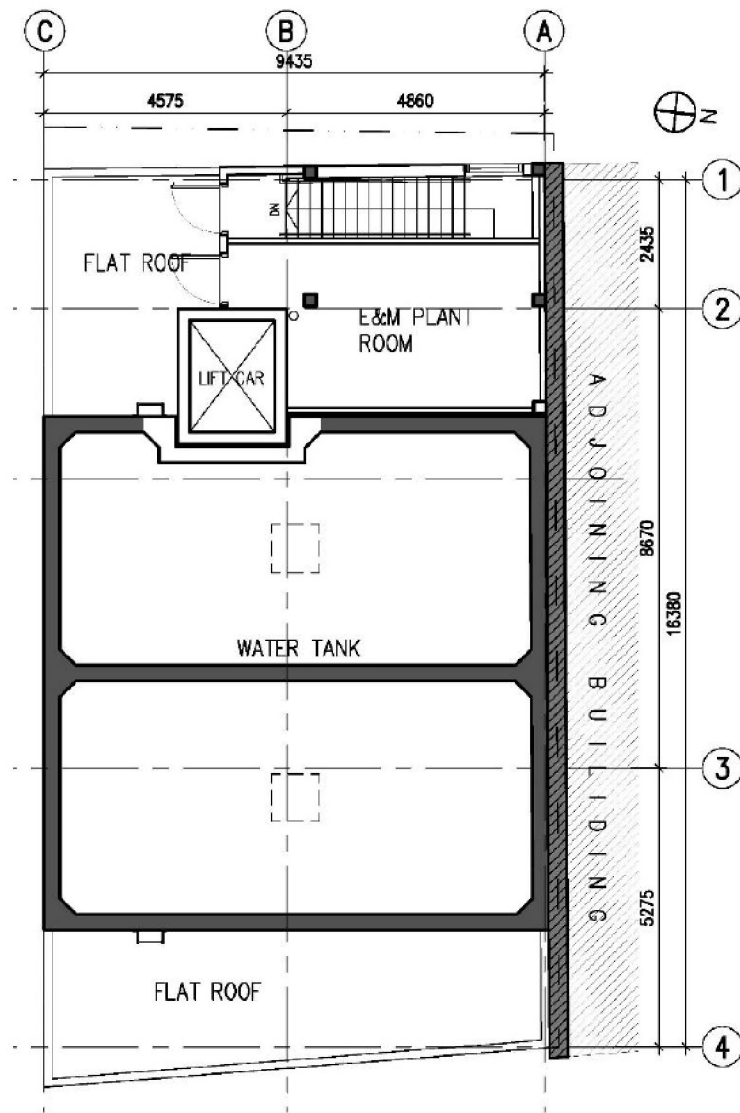
FIGURE 11

#### Figure Title

Proposed Second Floor Plan

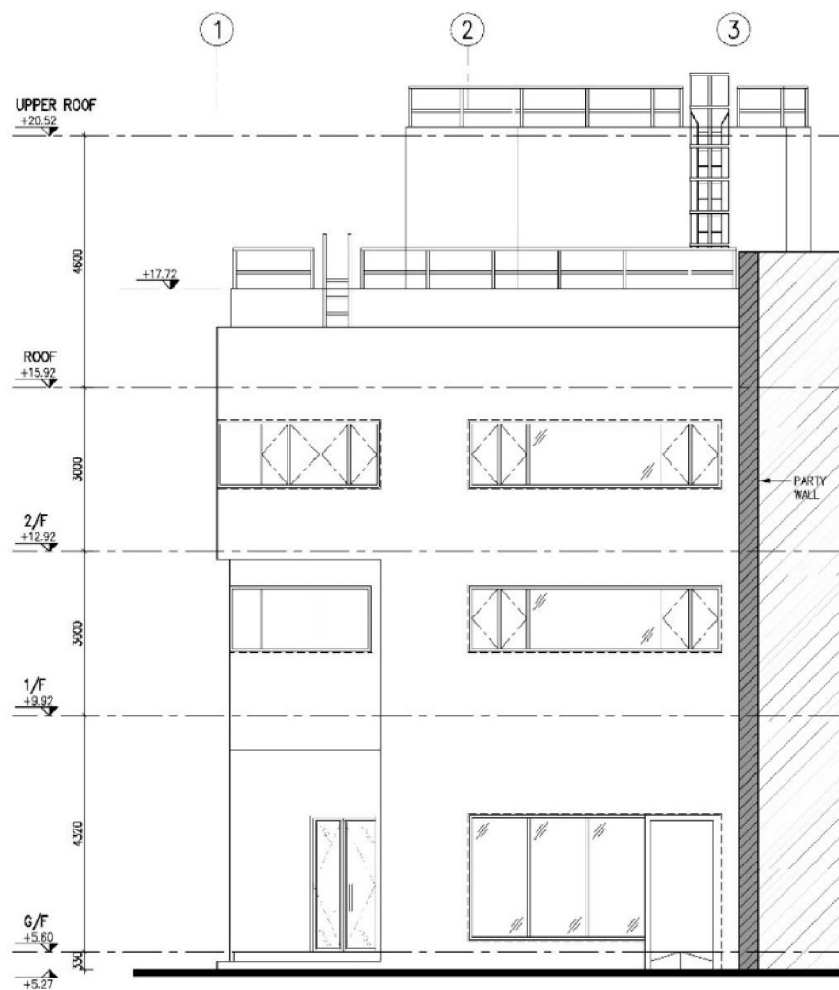
#### Scale

Not to scale

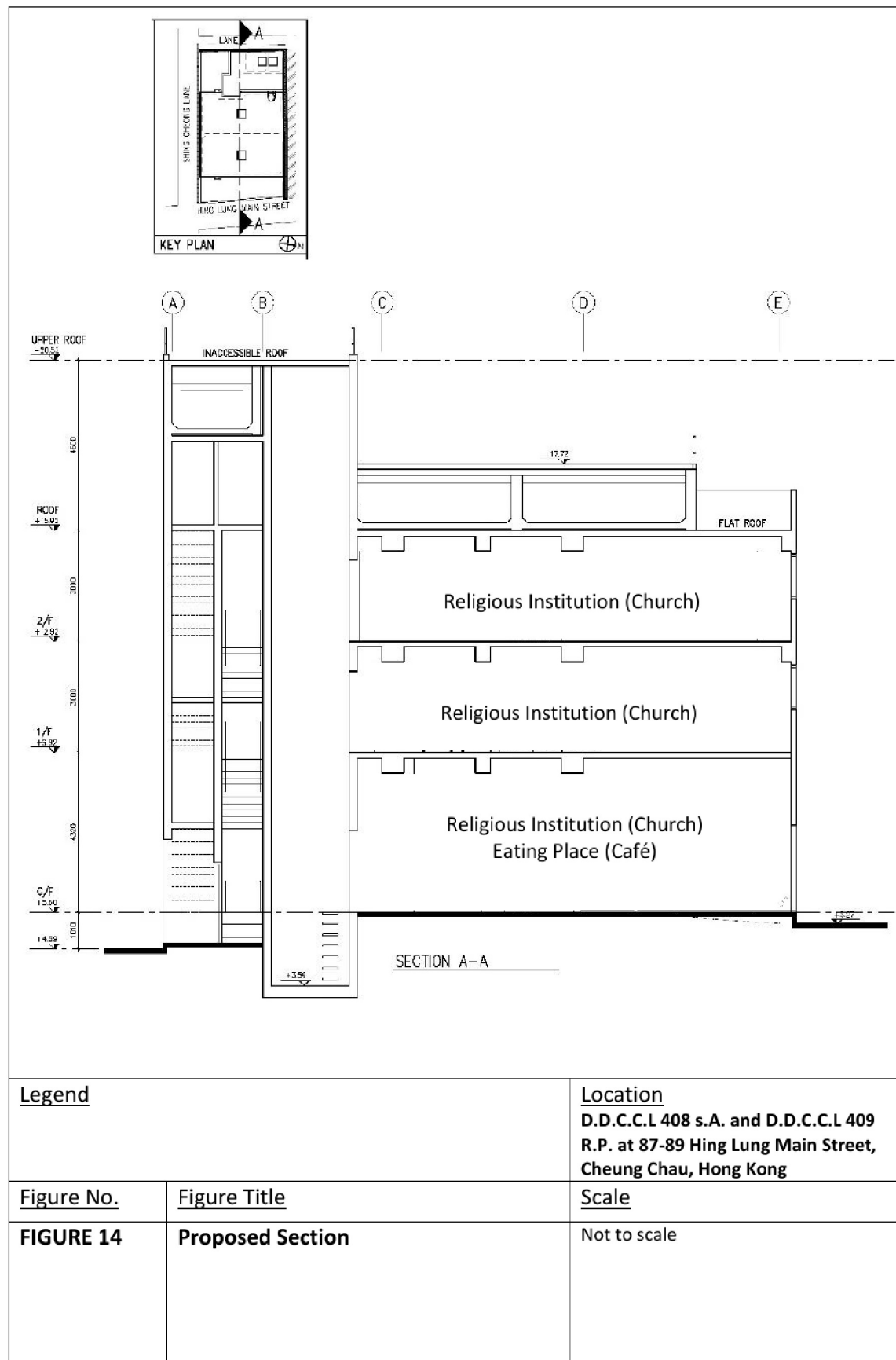


<u>Legend</u>		<u>Location</u> D.D.C.C.L 408 s.A. and D.D.C.C.L 409 R.P. at 87-89 Hing Lung Main Street, Cheung Chau, Hong Kong
<u>Figure No.</u>	<u>Figure Title</u>	<u>Scale</u>
FIGURE 12	Proposed Roof Floor Plan	Not to scale

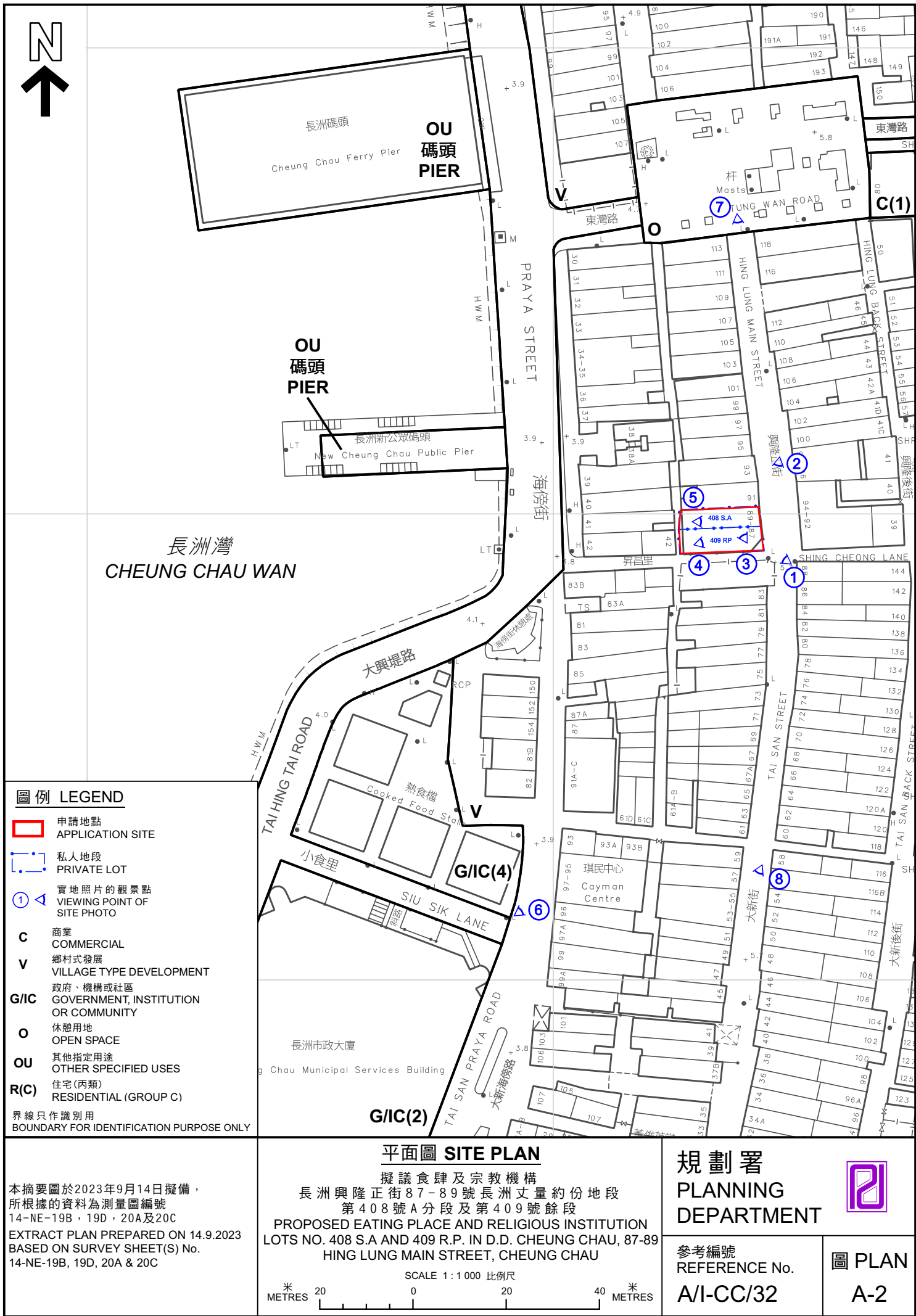




<u>Legend</u>		<u>Location</u> D.D.C.C.L 408 s.A. and D.D.C.C.L 409 R.P. at 87-89 Hing Lung Main Street, Cheung Chau, Hong Kong
<u>Figure No.</u>	<u>Figure Title</u>	<u>Scale</u>
<b>FIGURE 13</b>	<b>Proposed Front Elevation</b>	Not to scale











界線只作識別用  
BOUNDARY FOR IDENTIFICATION PURPOSE ONLY

本摘要圖於2023年9月13日擬備，  
所根據的資料為地政總署於2022年12月9日  
拍得的航攝照片編E168864C  
EXTRACT PLAN PREPARED ON 13.9.2023  
BASED ON AERIAL PHOTO No.E168864C  
TAKEN ON 9.12.2022  
BY LANDS DEPARTMENT

### 航攝照片 AERIAL PHOTO(S)

擬議食肆及宗教機構  
長洲興隆正街87-89號長洲丈量約份地段  
第408號A分段及第409號餘段  
PROPOSED EATING PLACE AND RELIGIOUS INSTITUTION  
LOTS NO. 408 S.A AND 409 R.P. IN D.D. CHEUNG CHAU,  
87-89 HING LUNG MAIN STREET, CHEUNG CHAU

規劃署  
PLANNING  
DEPARTMENT



參考編號  
REFERENCE No.  
A/I-CC/32

圖 PLAN  
A-3



1



昇昌里  
SHING CHEONG LANE

興隆正街  
HING LUNG MAIN STREET

申請地點  
APPLICATION SITE

2



大新街  
TAI SAN STREET

通往昇昌里  
TO  
SHING CHEONG  
LANE

興隆正街  
HING LUNG MAIN STREET

申請地點界線只作識別用  
APPLICATION SITE BOUNDARY FOR IDENTIFICATION PURPOSE ONLY

### 實地照片 SITE PHOTO

擬議食肆及宗教機構  
長洲興隆正街87-89號長洲丈量約份地段第408號A分段及第409號餘段  
PROPOSED EATING PLACE AND RELIGIOUS INSTITUTION  
LOTS NO. 408 S.A AND 409 R.P. IN D.D. CHEUNG CHAU, 87-89  
HING LUNG MAIN STREET, CHEUNG CHAU

本圖於2023年09月14日擬備，所根據的資料為攝於2022年08月15日的實地照片  
PLAN PREPARED ON 14.09.2023  
BASED ON SITE PHOTOS  
TAKEN ON 15.08.2023

規 劃 署  
PLANNING  
DEPARTMENT



參考編號  
REFERENCE No.  
A/I-CC/32

圖 PLAN  
A-4a



3



地下  
Ground Floor

4



一樓  
First Floor

5



二樓  
Second Floor

申請地點界線只作識別用  
APPLICATION SITE BOUNDARY FOR IDENTIFICATION PURPOSE ONLY

### 實地照片 SITE PHOTO

擬議食肆及宗教機構  
長洲興隆正街87-89號長洲丈量約份地段第408號A分段及第409號餘段  
PROPOSED EATING PLACE AND RELIGIOUS INSTITUTION  
LOTS NO. 408 S.A AND 409 R.P. IN D.D. CHEUNG CHAU, 87-89  
HING LUNG MAIN STREET, CHEUNG CHAU

本圖於2023年09月14日擬備，所根據的資料為攝於2023年09月13日的實地照片  
PLAN PREPARED ON 14.09.2023  
BASED ON SITE PHOTOS  
TAKEN ON 13.09.2023

規 劃 署  
PLANNING  
DEPARTMENT



參考編號  
REFERENCE No.  
A/I-CC/32

圖 PLAN  
A-4b



6



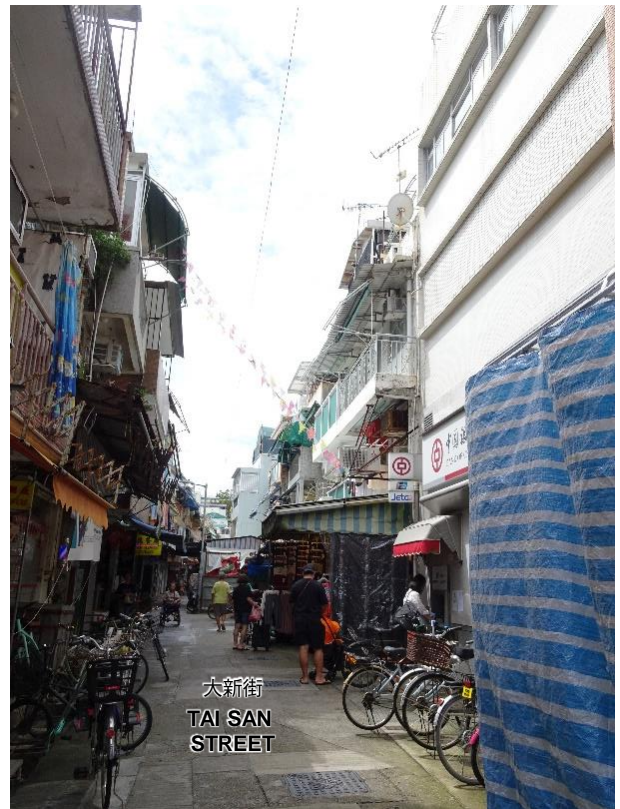
大新海傍路  
TAI SAN PRAYA ROAD

7



興隆正街  
HING LUNG  
MAIN STREET  
東灣路  
TUNG WAN ROAD

8



大新街  
TAI SAN  
STREET

申請地點界線只作識別用  
APPLICATION SITE BOUNDARY FOR IDENTIFICATION PURPOSE ONLY

本圖於2023年09月14日擬備，所根據的資料為攝於2023年09月13日的實地照片  
PLAN PREPARED ON 14.09.2023  
BASED ON SITE PHOTOS  
TAKEN ON 13.09.2023

周邊的現有非住用用途  
EXISTING NON-DOMESTIC USES IN THE VICINITY  
擬議食肆及宗教機構  
長洲興隆正街87-89號長洲丈量約份地段第408號A分段及第409號餘段  
PROPOSED EATING PLACE AND RELIGIOUS INSTITUTION  
LOTS NO. 408 S.A AND 409 R.P. IN D.D. CHEUNG CHAU, 87-89  
HING LUNG MAIN STREET, CHEUNG CHAU

規 劃 署  
PLANNING  
DEPARTMENT



參考編號  
REFERENCE No.  
A/I-CC/32

圖 PLAN  
A-4c