

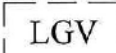


Legend

-  Pedestrian Access
-  Vehicular Ingress / Egress (7.3m)
-  Parking space for private car
(5m(L) x 2.5m(W))
-  Parking space for light goods vehicles
(7m(L) x 3.5m(W))

Site Area: 2,195m²

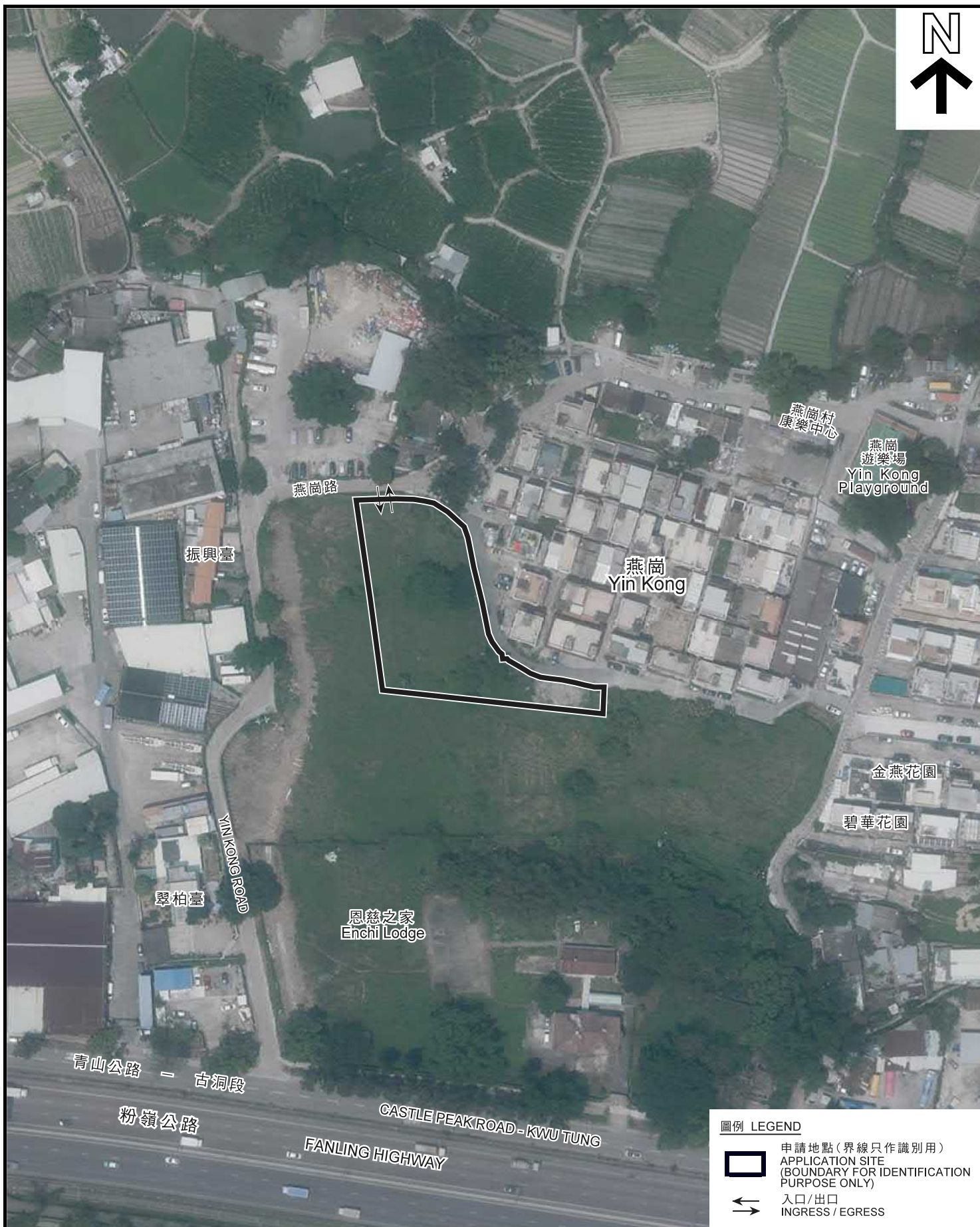
No.	Structure / Use	Covered Area	Height	No. of Storeys
1	Guard Room	14.6m ²	2.6m	1
2	Ancillary Storeroom	14.6m ²	2.6m	1
Total		29.2m ²		

1:500	Layout Plan Lots 706A (part), 707C (part), 707D (part), 707E, 707F, 707G, 707H, 707I, 707J, 709A ss8 (part), 710A, 710B, 710C, 710D, 710E, 710 R.P. and 711A in D. D. 92, Kwu Tung North, N.T.	Goldrich Planners & Surveyors Ltd.
August 2021		Plan 3a (P 21045)

(資料來源:申請人於 27.8.2021 呈交的資料)
(Source : Applicant's Submission of 27.8.2021)

參考編號
REFERENCE No.
A/KTN/79

繪圖 DRAWING
A-1



圖例 LEGEND



申請地點 (界線只作識別用)
APPLICATION SITE
(BOUNDARY FOR IDENTIFICATION
PURPOSE ONLY)



入口/出口
INGRESS / EGRESS

航攝照片 AERIAL PHOTO

臨時公眾停車場 (只限私家車及輕型貨車) (為期3年)
古洞北丈量約份第92約多幅地段
TEMPORARY PUBLIC VEHICLE PARK
(PRIVATE CARS AND LIGHT GOODS VEHICLES ONLY)
FOR A PERIOD OF 3 YEARS
VARIOUS LOTS IN D.D. 92, KWU TUNG NORTH

規劃署
PLANNING
DEPARTMENT



參考編號
REFERENCE No.

A/KTN/79

圖 PLAN
A-3

本摘要圖於2021年8月25日擬備，所根據的資料為地政總署於2020年4月15日拍得的航攝照片編號 E093020C
EXTRACT PLAN PREPARED ON 25.8.2021
BASED ON AERIAL PHOTO No.
E093020C TAKEN ON 15.4.2020
BY LANDS DEPARTMENT



申請地點界線只作識別用
APPLICATION SITE BOUNDARY FOR IDENTIFICATION PURPOSE ONLY

實地照片 SITE PHOTO

本摘要圖於2021年8月26日擬備，
所根據的資料為攝於
2021年7月30日的實地照片
PLAN PREPARED ON 26.8.2021
BASED ON SITE PHOTOS
TAKEN ON 30.7.2021

臨時公眾停車場(只限私家車及輕型貨車)(為期3年)
古洞北丈量約份第92約多幅地段
TEMPORARY PUBLIC VEHICLE PARK
(PRIVATE CARS AND LIGHT GOODS VEHICLES ONLY)
FOR A PERIOD OF 3 YEARS
VARIOUS LOTS IN D.D. 92, KWU TUNG NORTH

規劃署
PLANNING
DEPARTMENT



參考編號
REFERENCE No.

A/KTN/79

圖 PLAN
A-4