

**A. AREA CALCULATION:**

1)  $6.25 \times 5.12 = 32 \text{ M}^2$

**B. DEDUCTION:**

D1)  $(1.22 \times 1.9)/2 = -1.159 \text{ M}^2$

D2)  $(1.6 \times 0.385)/2 = -0.308 \text{ M}^2$

ACTUAL AREA OF

TRANSFORMER YARD =  $30.533 \text{ M}^2$

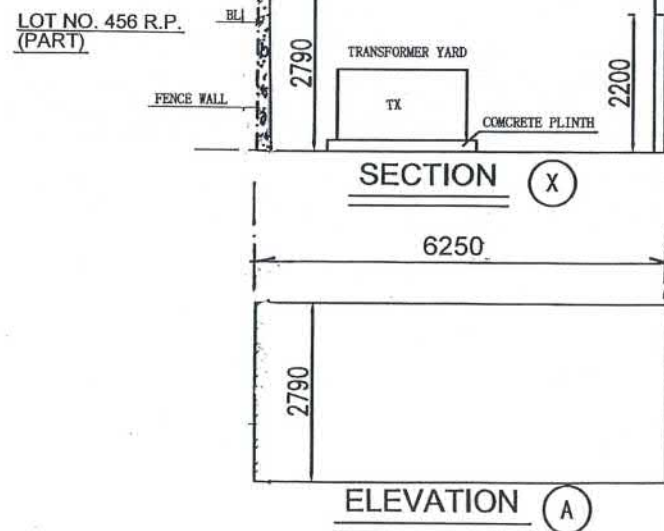
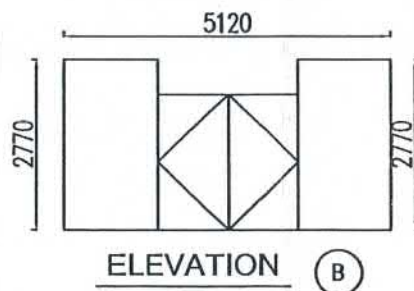
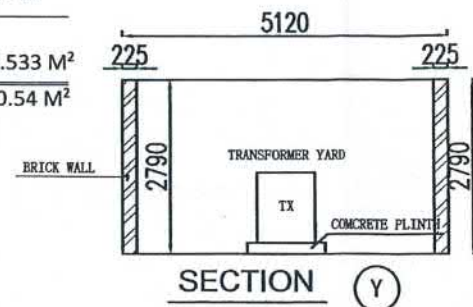
SAY =  $30.54 \text{ M}^2$

**NOTE:**

① Dimension and Capacity of CLP's Transformer Shown in the Drawing are 2300mm (L) x 1480mm (W) x 1830 (H) and 1.5 MVA Respectively. Provided by CLP Power Hong Kong Ltd.

② CLP would not like to provide the information of Switch Panels.

③ The dimension of Switch Panels was been taken by SYS from top view by Laser Distance Meter.



**Calculation of TX & Switch Panels**

Mark	Dimension (Approh.)	Area (about)
1 TX	2.300 x 1.480 M	3.40 M <sup>2</sup>
2 SP1	1.550 x 0.550 M	0.853 M <sup>2</sup>
3 SP2	1.600 x 0.800 M	1.28 M <sup>2</sup>
4 SP3	1.550 x 0.550 M	0.853 M <sup>2</sup>
5 SP4	1.400 x 1.100 M	1.54 M <sup>2</sup>
Total =		7.93 M <sup>2</sup>

**NOTE:**

DO NOT SCALE  
DRAWING

**FLOOR PLAN, SECTIONS & ELEVATIONS**  
**LOT NO. 457, SEC. C. PART & SEC. E. PART D.D. 94**

參考編號  
REFERENCE No.

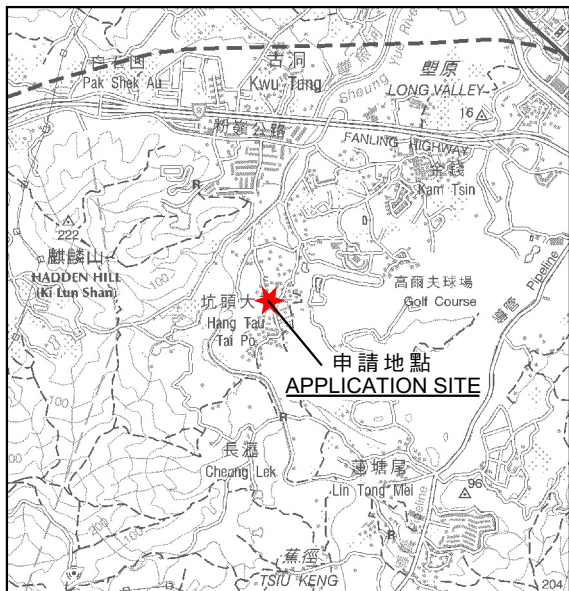
A/NE-KTS/509

繪圖 DRAWING

A-1

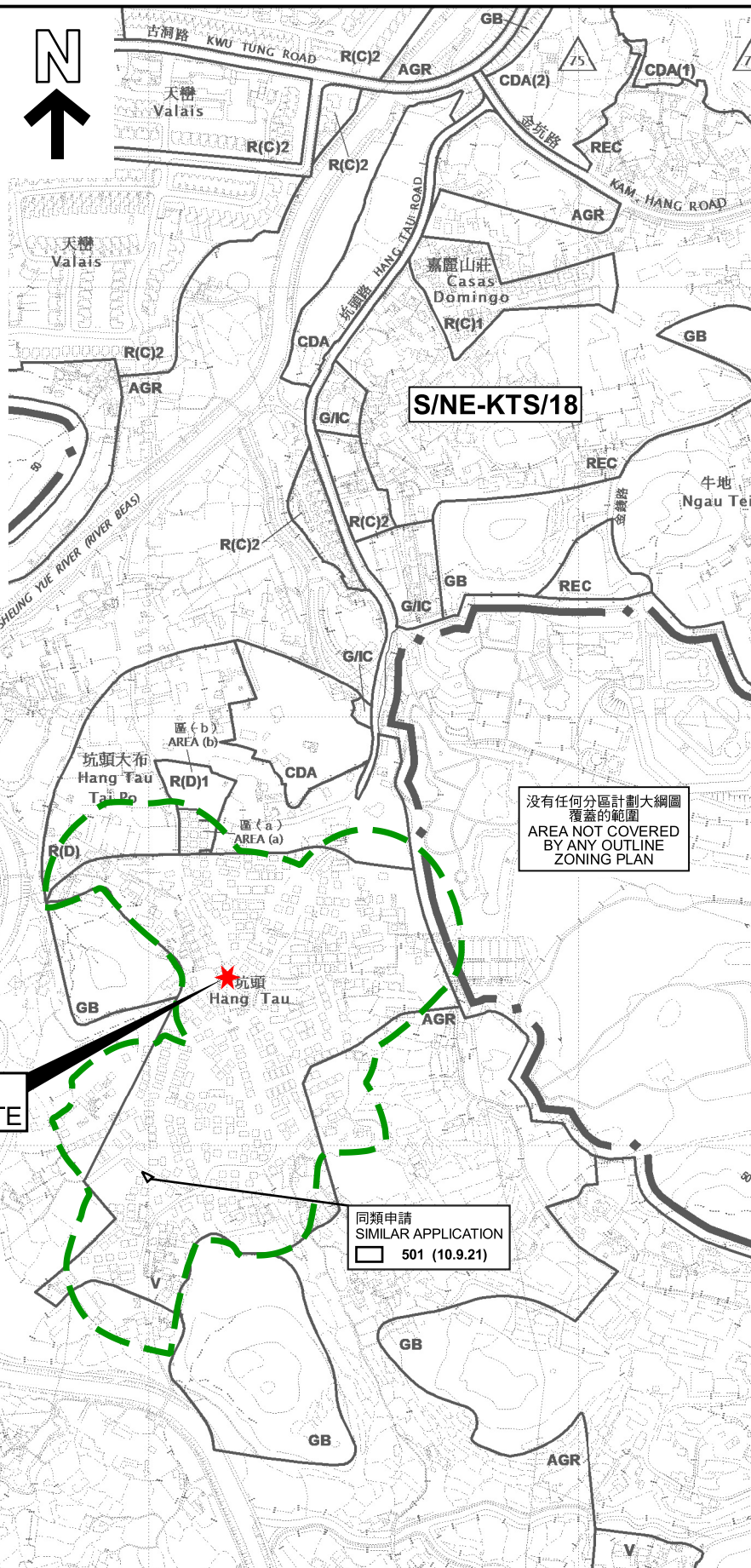
(資料來源：申請人於 16.5.2022 呈交的資料)  
(Source: Applicant's Submission of 16.5.2022)





要覽圖 KEY PLAN

SCALE 1:50,000 比例尺



沒有任何分區計劃大綱圖  
覆蓋的範圍  
AREA NOT COVERED  
BY ANY OUTLINE  
ZONING PLAN

沒有任何分區計劃大綱圖  
覆蓋的範圍  
AREA NOT COVERED  
BY ANY OUTLINE  
ZONING PLAN

申請地點  
APPLICATION SITE

同類申請  
SIMILAR APPLICATION  
501 (10.9.21)

圖例 LEGEND

501 (10.9.21) 獲批准的申請  
APPROVED APPLICATION

501 (10.9.21) 會議日期  
DATE OF MEETING

申請編號  
APPLICATION NUMBER

坑頭的鄉村範圍  
VILLAGE 'ENVIRONS'  
OF HANG TAU

申請地點界線只作識別用  
APPLICATION SITE BOUNDARY  
FOR IDENTIFICATION PURPOSE ONLY

位置圖 LOCATION PLAN

擬議私人項目設施裝置(變壓器及設備)  
新界古洞南坑頭村丈量約份第94約地段  
第457號C分段(部分)及E分段(部分)

PROPOSED UTILITY INSTALLATION FOR PRIVATE PROJECT  
(TRANSFORMER AND EQUIPMENT)

LOTS 457 S.C (PART) AND S.E (PART) IN D.D.94,  
HANG TAU VILLAGE, KWU TUNG SOUTH, NEW TERRITORIES

SCALE 1:7 500 比例尺

米 100 0 100 200 300 米  
METRES

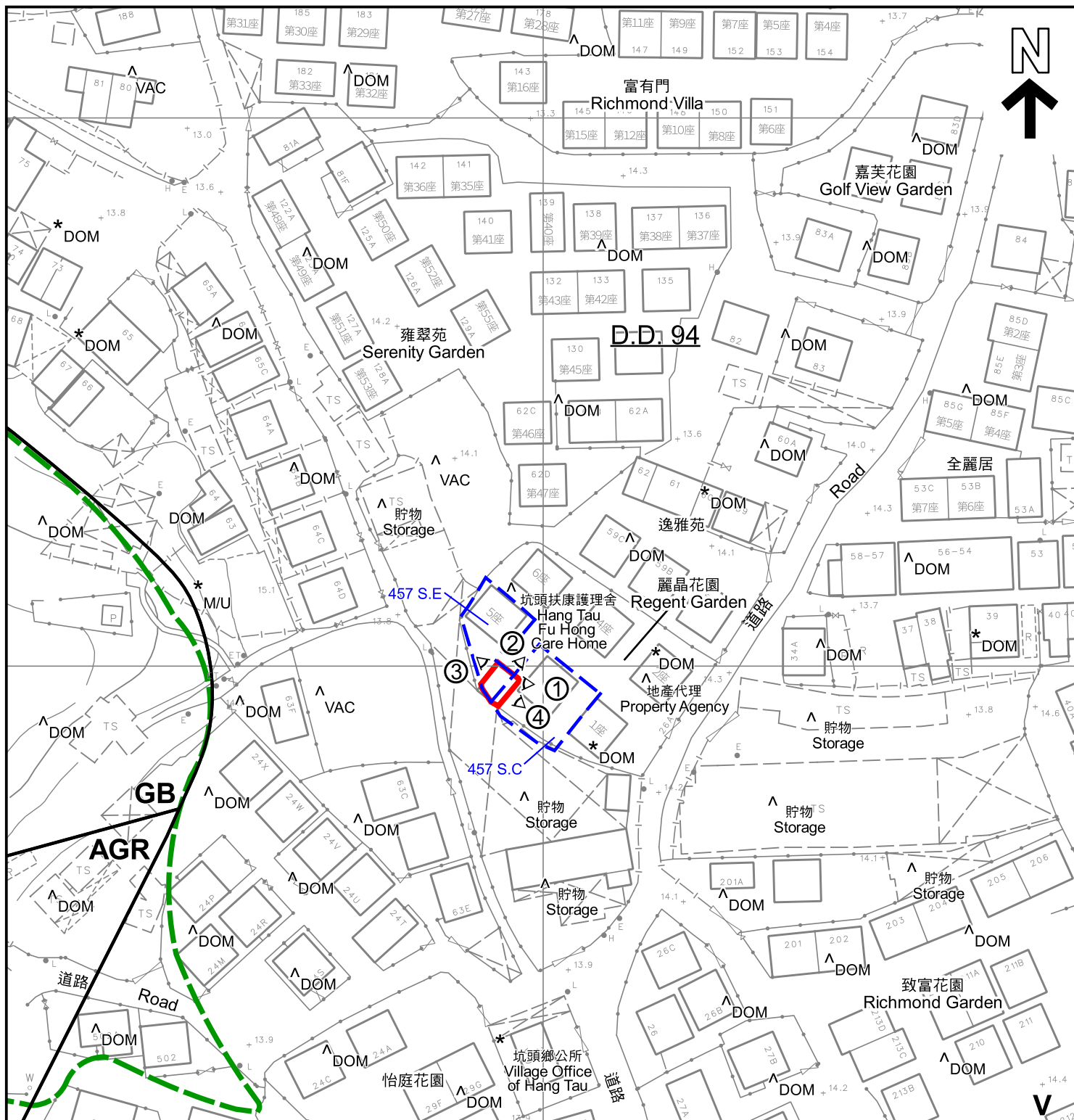
規劃署  
PLANNING  
DEPARTMENT



參考編號  
REFERENCE No.  
A/NE-KTS/509

圖 PLAN  
A-1

本摘要圖於2022年7月4日擬備，  
所根據的資料為於2022年1月4日  
核准的分區計劃大綱圖編號S/NE-KTS/18  
EXTRACT PLAN PREPARED ON  
4.7.2022 BASED ON OUTLINE ZONING  
PLAN No. S/NE-KTS/18 APPROVED ON  
4.1.2022



# 圖例 LEGEND

- 申請地點 (界線只作識別用)  
APPLICATION SITE (BOUNDARY FOR IDENTIFICATION PURPOSE ONLY)
- V** 鄉村式發展  
VILLAGE TYPE DEVELOPMENT
- AGR** 農業  
AGRICULTURE
- GB** 綠化地帶  
GREEN BELT
- 實地照片的觀景點  
VIEWING POINT OF SITE PHOTO

- 坑頭的鄉村範圍  
VILLAGE 'ENVIRONS' OF HANG TAU
- DOM** 住用構築物  
DOMESTIC STRUCTURE
- M/U** 荒地  
UNUSED LAND
- VAC** 空置  
VACANT

## 註釋 Notes :

- (1) 2022年5月24日勘測的土地用途  
Land uses shown on this plan are in accordance with the land use survey conducted by the Planning Department on 24.5.2022
- (2) ★ 土地用途跟1991年勘測的土地用途一致  
Indicates that the use is the same as that revealed by the land use survey conducted by the Planning Department in 1991
- (3) ^ 土地用途跟1991年勘測的土地用途有別  
Indicates that the use is different from that revealed by the land use survey conducted by the Planning Department in 1991

本摘要圖於2022年6月28日擬備，  
所根據的資料為測量圖編號2-SE-15A

EXTRACT PLAN PREPARED ON  
28.6.2022 BASED ON SURVEY SHEET  
No. 2-SE-15A

## 平面圖 SITE PLAN

擬議私人項目設施裝置(變壓器及設備)  
新界古洞南坑頭村丈量約份第94約地段  
第457號C分段(部分)及E分段(部分)  
PROPOSED UTILITY INSTALLATION FOR PRIVATE PROJECT  
(TRANSFORMER AND EQUIPMENT)  
LOTS 457 S.C (PART) AND S.E (PART) IN D.D.94,  
HANG TAU VILLAGE, KWU TUNG SOUTH, NEW TERRITORIES  
SCALE 1:1 000 比例尺

米 20 0 20 40 米  
METRES

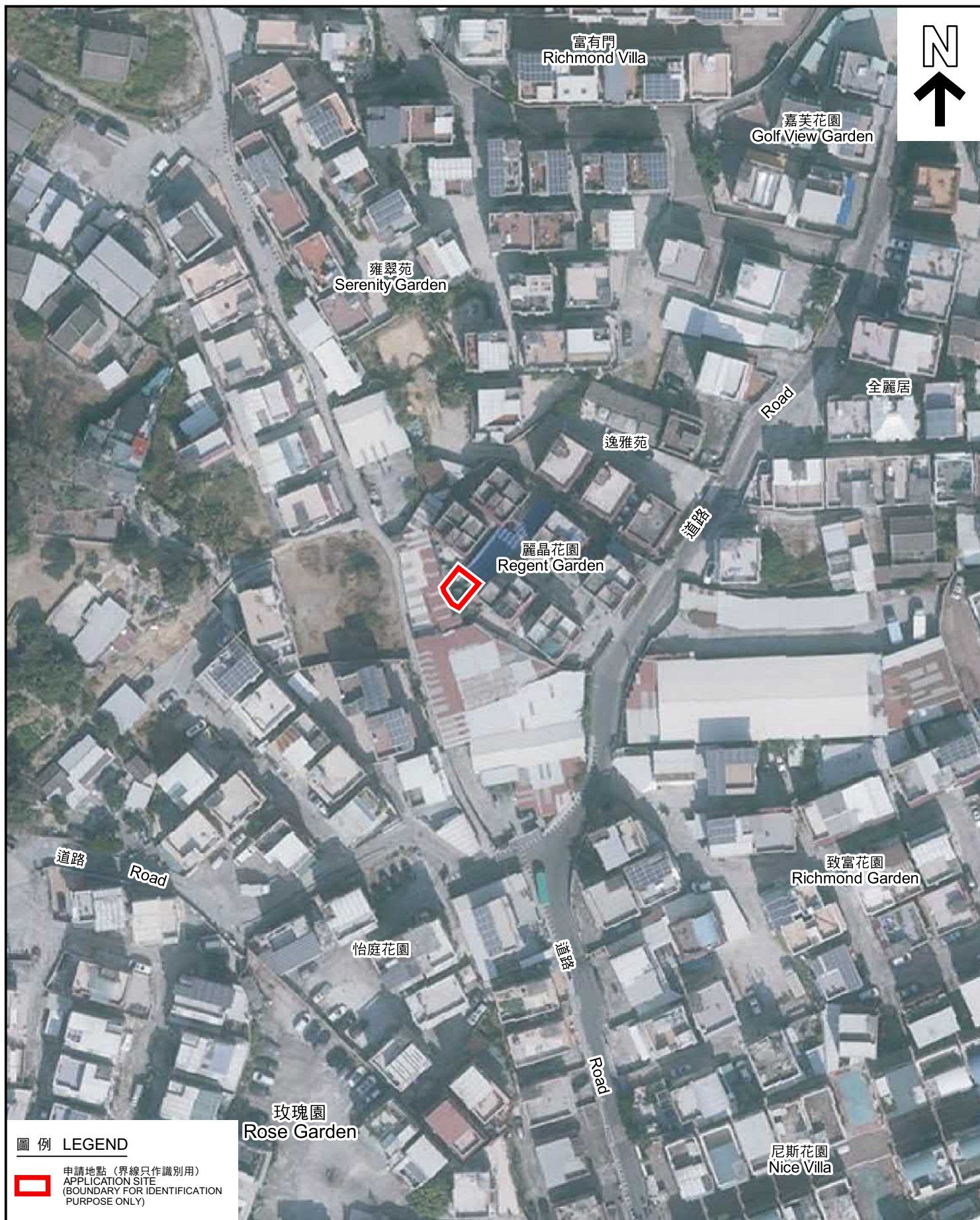
規劃署  
PLANNING  
DEPARTMENT



參考編號  
REFERENCE No.  
A/NE-KTS/509

圖 PLAN  
A-2





#### 圖例 LEGEND

 申請地點 (界線只作識別用)  
APPLICATION SITE  
(BOUNDARY FOR IDENTIFICATION  
PURPOSE ONLY)

本摘要圖於2022年6月24日擬備，所根據的資料為地政總署於2021年1月14日拍得的航攝照片編號 E124793C

EXTRACT PLAN PREPARED ON  
24.6.2022 BASED ON AERIAL PHOTO No.  
E124793C TAKEN ON 14.1.2021 BY  
LANDS DEPARTMENT

#### 航攝照片 AERIAL PHOTO

擬議私人項目設施裝置(變壓器及設備)  
新界古洞南坑頭村丈量約份第94約地段  
第457號C分段(部分)及E分段(部分)  
PROPOSED UTILITY INSTALLATION FOR PRIVATE PROJECT  
(TRANSFORMER AND EQUIPMENT)  
LOTS 457 S.C (PART) AND S.E (PART) IN D.D.94,  
HANG TAU VILLAGE, KWU TUNG SOUTH, NEW TERRITORIES

規劃署  
PLANNING  
DEPARTMENT



參考編號  
REFERENCE No.  
A/NE-KTS/509

圖 PLAN  
A-3





申請地點界線只作識別用  
APPLICATION SITE BOUNDARY FOR IDENTIFICATION PURPOSE ONLY

### 實地照片 SITE PHOTOS

擬議私人項目設施裝置(變壓器及設備)  
新界古洞南坑頭村丈量約份第94約地段  
第457號C分段(部分)及E分段(部分)  
PROPOSED UTILITY INSTALLATION FOR PRIVATE PROJECT  
(TRANSFORMER AND EQUIPMENT)  
LOTS 457 S.C (PART) AND S.E (PART) IN D.D.94,  
HANG TAU VILLAGE, KWU TUNG SOUTH, NEW TERRITORIES

規劃署  
PLANNING  
DEPARTMENT



參考編號  
REFERENCE No.  
A/NE-KTS/509

圖 PLAN  
A-4a

本圖於2022年6月24日擬備，所根據的  
資料為攝於2022年5月24日  
的實地照片  
PLAN PREPARED ON 24.6.2022  
BASED ON SITE PHOTOS  
TAKEN ON 24.5.2022





申請地點界線只作識別用  
APPLICATION SITE BOUNDARY FOR IDENTIFICATION PURPOSE ONLY

本圖於2022年6月24日擬備，所根據的資料為攝於2022年5月24日的實地照片

PLAN PREPARED ON 24.6.2022  
BASED ON SITE PHOTOS  
TAKEN ON 24.5.2022

### 實地照片 SITE PHOTOS

擬議私人項目設施裝置(變壓器及設備)  
新界古洞南坑頭村丈量約份第94約地段  
第457號C分段(部分)及E分段(部分)  
PROPOSED UTILITY INSTALLATION FOR PRIVATE PROJECT  
(TRANSFORMER AND EQUIPMENT)  
LOTS 457 S.C (PART) AND S.E (PART) IN D.D.94,  
HANG TAU VILLAGE, KWU TUNG SOUTH, NEW TERRITORIES

規劃署  
PLANNING  
DEPARTMENT



參考編號  
REFERENCE No.  
A/NE-KTS/509

圖 PLAN  
A-4b