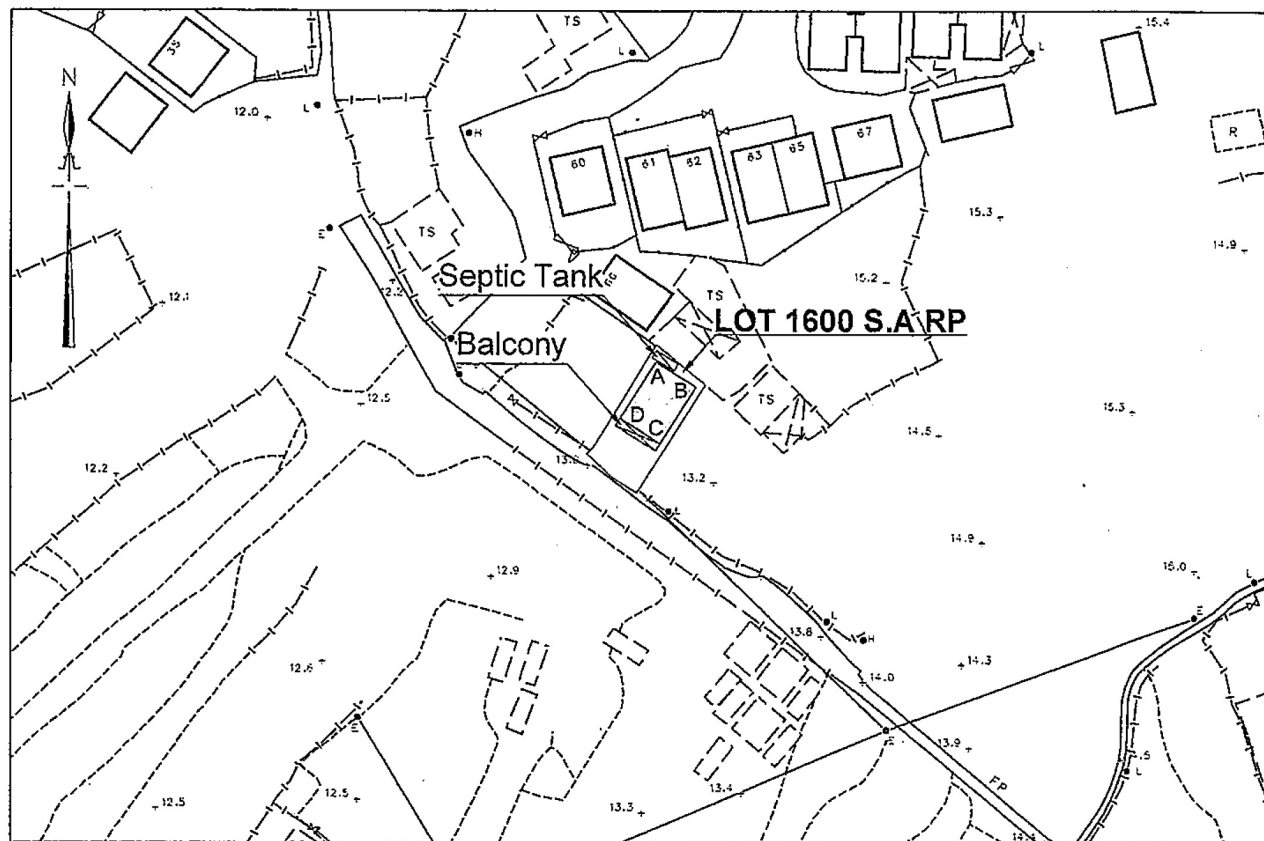


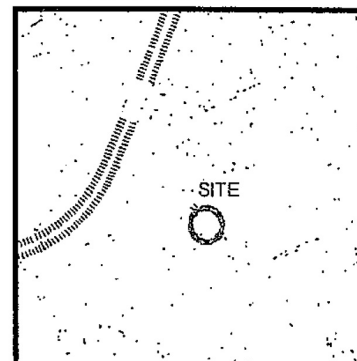
PROPOSED BUILDING LICENCE LOT No. 1600 S.A RP IN D.D. 91



COLORED PINK AREA = 65.03 SQUARE METRES (ABOUT)

Line	Bearing	Distance(M)	Nothing	Easting	Pt.
A-B	122° 24' 08"	6.750	839 260. 263	831 376. 929	A
B-C	212° 24' 08"	9.634	839 256. 646	831 382. 628	B
C-D	302° 24' 08"	6.750	839 248. 512	831 377. 466	C
D-A	32° 24' 08"	9.634	839 252. 129	831 371. 767	D

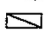
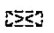
LOCATION PLAN



Remarks:

Please refer to SRP No. :
SRP/DN/054/0993/D1 for the Boundary
information of Lot No. 1600 S.A RP in D.D. 91

Legends:

-  Septic Tank (3.658m x 1.219m)
-  Balcony (6.750m x 1.219m)

Scale : 1:1000

Survey Sheet No. : 3-SW-11B

Date : February 2023

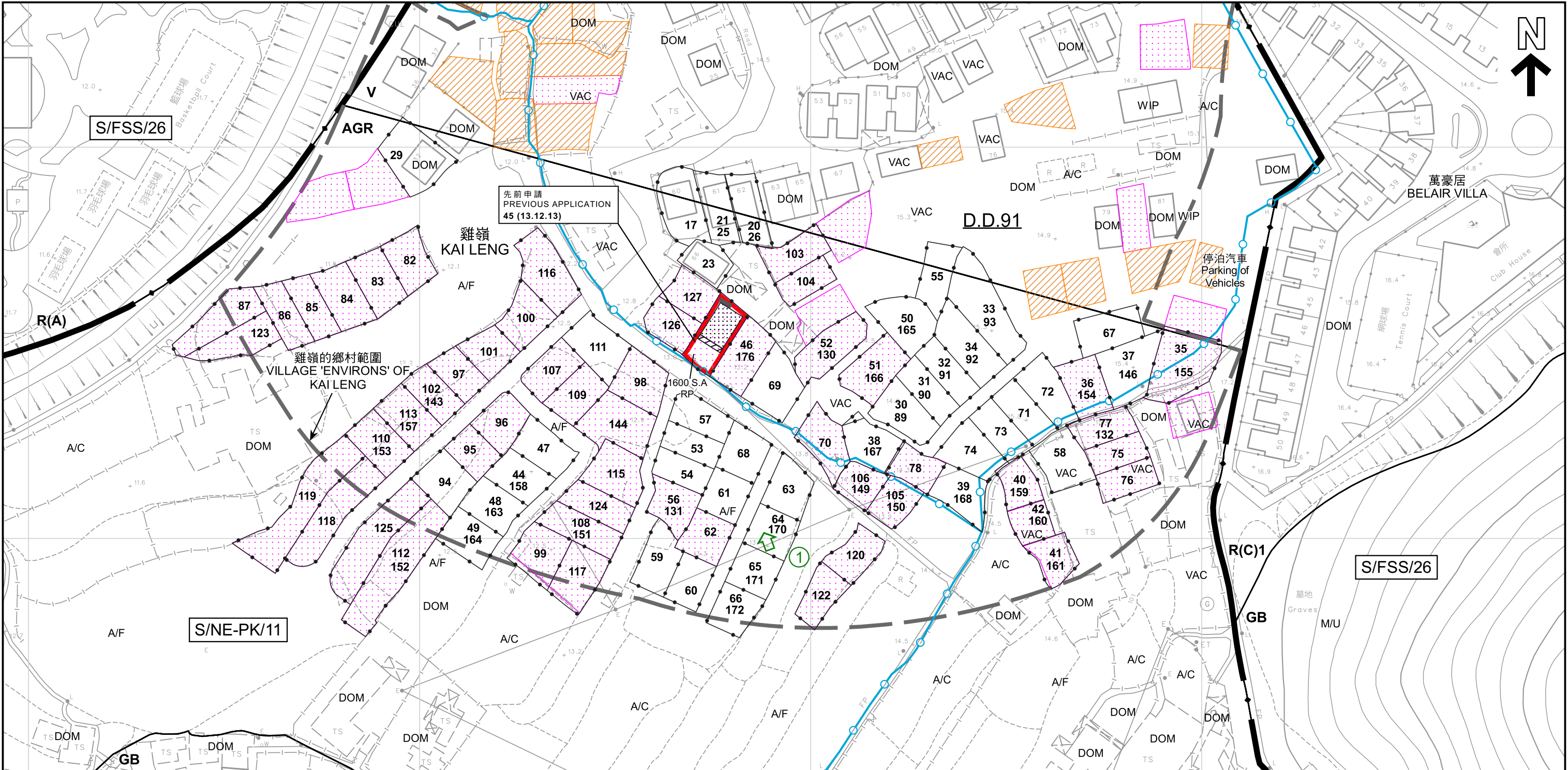
Plan No. : CW/DN/1600ARP/91/BL/01

參考編號
REFERENCE No.

A/NE-PK/178

繪圖 DRAWING A-1

(來源 : 申請人建議書)
(SOURCE : APPLICANT'S SUBMISSION PLAN)



圖例 LEGEND				註釋 Note :			
<div><div></div><div>申請地點 (界線只作識別用)</div><div>APPLICATION SITE (BOUNDARY FOR IDENTIFICATION PURPOSE ONLY)</div></div>	<div><div></div><div>獲地政處批准的小型屋宇批地/重建新界豁免管制屋宇申請</div><div>SMALL HOUSE GRANT / NTEH REDEVELOPMENT APPLICATION APPROVED BY DLO</div></div>	<div><div></div><div>現有水管</div><div>EXISTING WATER MAIN</div></div>	<div><div>V</div><div>鄉村式發展</div><div>VILLAGE TYPE DEVELOPMENT</div></div>	<div><div>A/C</div><div>常耕農地</div><div>ACTIVE AGRICULTURAL LAND</div></div>	<div>註釋 Note : (1) 2023年4月19日勘測的土地用途 Land uses shown on this plan are in accordance with the land use survey conducted by the Planning Department on 19.4.2023</div>		
<div><div></div><div>擬議小型屋宇</div><div>PROPOSED SMALL HOUSE</div></div>	<div><div></div><div>獲得規劃許可作小型房屋的地盤 (申請編號)</div><div>SITES WITH PLANNING APPROVALS FOR SMALL HOUSES (APPLICATION NUMBER)</div></div>	<div><div></div><div>無人駕駛航拍的拍攝方向</div><div>VIEWING DIRECTION FROM UNMANNED AERIAL VEHICLE (UAV)</div></div>	<div><div>R(A)</div><div>住宅(甲類)</div><div>RESIDENTIAL (GROUP A)</div></div>	<div><div>A/F</div><div>休耕農地</div><div>FALLOW AGRICULTURAL LAND</div></div>			
<div><div></div><div>擬議露台</div><div>PROPOSED BALCONY</div></div>	<div><div></div><div>化糞池</div><div>SEPTIC TANK</div></div>	<div><div>45 (13.12.13)</div><div>獲批准的申請</div><div>APPROVED APPLICATION</div></div>	<div><div>R(C)</div><div>住宅(丙類)</div><div>RESIDENTIAL (GROUP C)</div></div>	<div><div>DOM</div><div>住用構築物</div><div>DOMESTIC STRUCTURES</div></div>			
<div><div></div><div>正在處理中的小型屋宇批地申請</div><div>SMALL HOUSE GRANT APPLICATION BEING PROCESSED</div></div>		<div><div>45 (13.12.13)</div><div>會議日期</div><div>DATE OF MEETING</div></div>	<div><div>AGR</div><div>農業</div><div>AGRICULTURE</div></div>	<div><div>M/U</div><div>荒地</div><div>UNUSED LAND</div></div>			
		<div><div></div><div>申請編號</div><div>APPLICATION NUMBER</div></div>	<div><div>GB</div><div>綠化地帶</div><div>GREEN BELT</div></div>				

本摘要圖於2023年4月27日擬備，
所根據的資料為測量圖編號3-SW-11B及12A
EXTRACT PLAN PREPARED ON 27.4.2023
BASED ON SURVEY SHEETS No. 3-SW-11B & 12A

平面圖 SITE PLAN

擬議屋宇 (新界豁免管制屋宇-小型屋宇)
新界上水雞嶺丈量約份第91約地段第1600號A分段餘段
PROPOSED HOUSE (NEW TERRITORIES EXEMPTED HOUSE - SMALL HOUSE)
LOT 1600 S.A. RP IN D.D. 91, KAI LENG, SHEUNG SHUI, NEW TERRITORIES

SCALE 1:1 000 比例尺

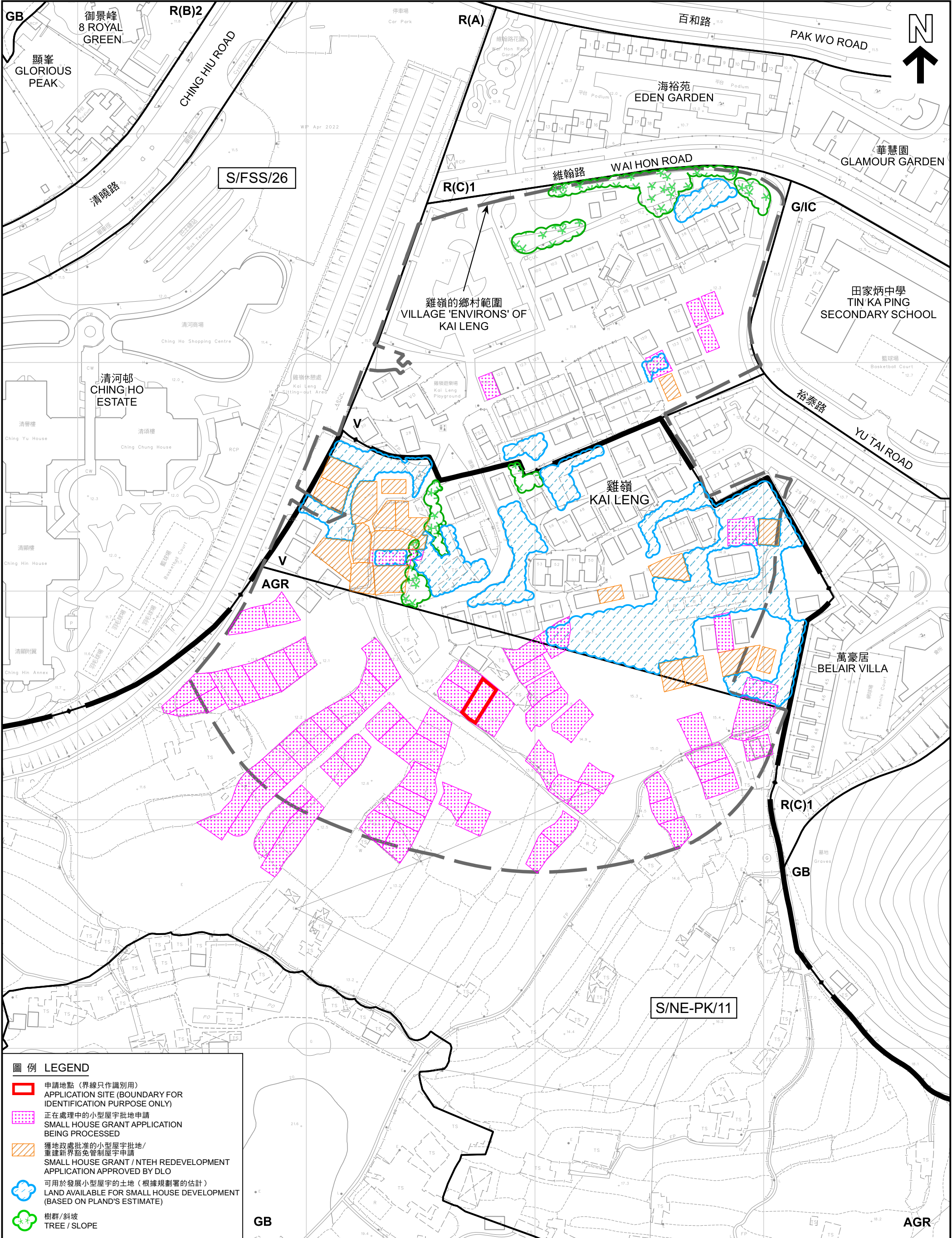
米 METRES

20 0 20 40 60 80 米 METRES

規劃署
PLANNING DEPARTMENT

參考編號
REFERENCE No.
A/NE-PK/178

圖 PLAN
A-2a



圖例

LEGEND

申請地點 (界線只作識別用)

APPLICATION SITE (BOUNDARY FOR IDENTIFICATION PURPOSE ONLY)

正在處理中的小型屋宇批地申請

SMALL HOUSE GRANT APPLICATION BEING PROCESSED

獲地政處批准的小型屋宇批地/重建新界豁免管制屋宇申請

SMALL HOUSE GRANT / NTEH REDEVELOPMENT APPLICATION APPROVED BY DLO

可用於發展小型屋宇的土地 (根據規劃署的估計)

LAND AVAILABLE FOR SMALL HOUSE DEVELOPMENT (BASED ON PLAND'S ESTIMATE)

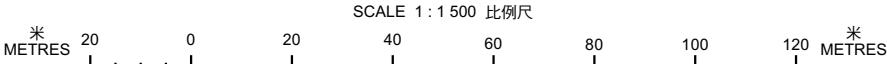
樹群/斜坡

TREE / SLOPE

在「鄉村式發展」地帶內預計可供發展小型屋宇的土地數量
ESTIMATED AMOUNT OF LAND AVAILABLE FOR SMALL HOUSE DEVELOPMENT WITHIN THE "V" ZONE

擬議屋宇 (新界豁免管制屋宇-小型屋宇)
PROPOSED HOUSE (NEW TERRITORIES EXEMPTED HOUSE - SMALL HOUSE)
LOT 1600 S.A RP IN D.D. 91, KAI LENG, SHEUNG SHUI, NEW TERRITORIES

本摘要圖於2023年4月27日擬備，
所根據的資料為測量圖編號
3-SW-11B及12A
EXTRACT PLAN PREPARED ON 27.4.2023
BASED ON SURVEY SHEETS No.
3-SW-11B & 12A

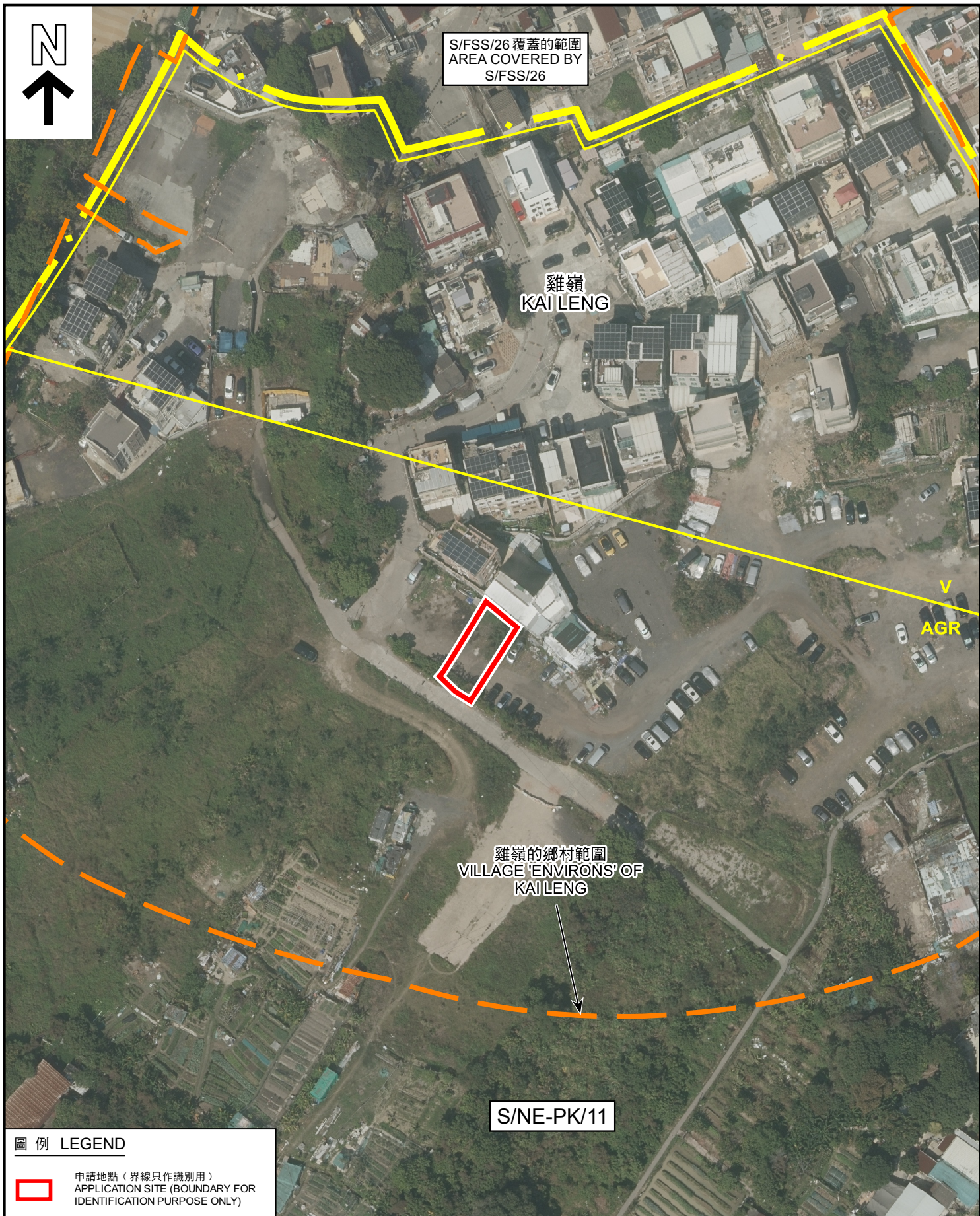


規劃署
PLANNING
DEPARTMENT



參考編號
REFERENCE No.
A/NE-PK/178

圖 PLAN
A-2b



圖例 LEGEND



申請地點（界線只作識別用）
APPLICATION SITE (BOUNDARY FOR IDENTIFICATION PURPOSE ONLY)

航攝照片 AERIAL PHOTO

擬議屋宇（新界豁免管制屋宇-小型屋宇）
新界上水雞嶺丈量約份第91約地段第1600號A分段餘段
PROPOSED HOUSE
(NEW TERRITORIES EXEMPTED HOUSE - SMALL HOUSE)
LOT 1600 S.A RP IN D.D. 91,
KAI LENG, SHEUNG SHUI, NEW TERRITORIES

規劃署
PLANNING
DEPARTMENT



參考編號
REFERENCE No.
A/NE-PK/178

圖 PLAN
A-3

本摘要圖於2023年4月19日擬備，
所根據的資料為地政總署於2022年2月14日
拍得的航攝照片編號E149556C
EXTRACT PLAN PREPARED ON 19.4.2023
BASED ON AERIAL PHOTO No. E149556C
TAKEN ON 14.2.2022 BY
LANDS DEPARTMENT



申請地點界線只作識別用
APPLICATION SITE BOUNDARY FOR IDENTIFICATION PURPOSE ONLY

本圖於2023年4月19日擬備，
所根據的資料為攝於2023年3月29日
的無人駕駛航拍照片
PLAN PREPARED ON 19.4.2023
BASED ON UNMANNED AERIAL VEHICLE
(UAV) PHOTO TAKEN ON 29.3.2023

實地照片 SITE PHOTO

擬議屋宇（新界豁免管制屋宇-小型屋宇）
新界上水雞嶺丈量約份第91約地段第1600號A分段餘段
PROPOSED HOUSE (NEW TERRITORIES EXEMPTED HOUSE - SMALL HOUSE)
LOT 1600 S.A RP IN D.D. 91, KAI LENG, SHEUNG SHUI, NEW TERRITORIES

規劃署
PLANNING
DEPARTMENT



參考編號
REFERENCE No.
A/NE-PK/178

圖 PLAN
A-4