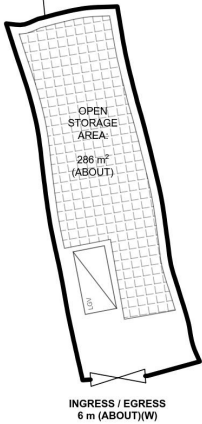


DEVELOPMENT PARAMETERS

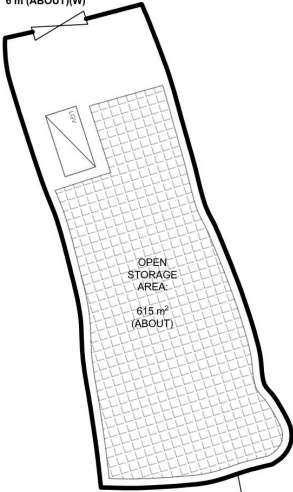
APPLICATION SITE AREA : 2,255 m² (ABOUT)
COVERED AREA : NOT APPLICABLE
UNCOVERED AREA : 2,255 m² (ABOUT)

* NO STRUCTURE IS PROPOSED AT THE APPLICATION SITE

APPLICATION SITE (A)
AREA: 487 m² (ABOUT)

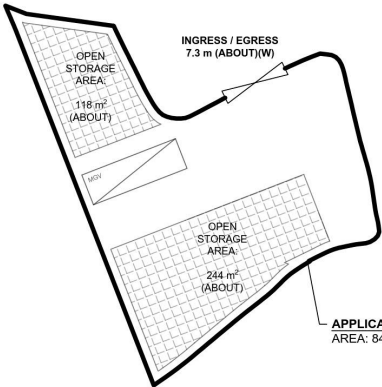


INGRESS / EGRESS
6 m (ABOUT) (W)



APPLICATION SITE (B)
AREA: 924 m² (ABOUT)

INGRESS / EGRESS
7.3 m (ABOUT) (W)

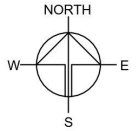


APPLICATION SITE (C)
AREA: 844 m² (ABOUT)

PARKING AND LOADING/UNLOADING PROVISIONS

NO. OF L/U/L SPACE FOR LIGHT GOODS VEHICLE : 2
DIMENSION OF L/U/L SPACE : 7 m (L) X 3.5 m (W)

NO. OF L/U/L SPACE FOR MEDIUM GOODS VEHICLE : 1
DIMENSION OF L/U/L SPACE : 11 m (L) X 3.5 m (W)



PLANNING CONSULTANT



PROJECT

PROPOSED TEMPORARY OPEN STORAGE OF CONSTRUCTION MATERIAL AND MACHINERY WITH ANCILLARY FACILITIES FOR A PERIOD OF 3 YEARS AND ASSOCIATED FILLING OF LAND

SITE LOCATION

VARIOUS LOTS IN D.D. 82, TA KWU LING, NEW TERRITORIES

SCALE

1:700 @ A1

DRAWN BY

MN

DATE

16.5.2024

CHECKED BY

DATE

APPROVED BY

DATE

DWG. TITLE

LAYOUT PLAN

DWG NO.

PLAN 5

VER.

001

參考編號

REFERENCE No.

A/NE-TKL/761

繪圖

DRAWING A-1

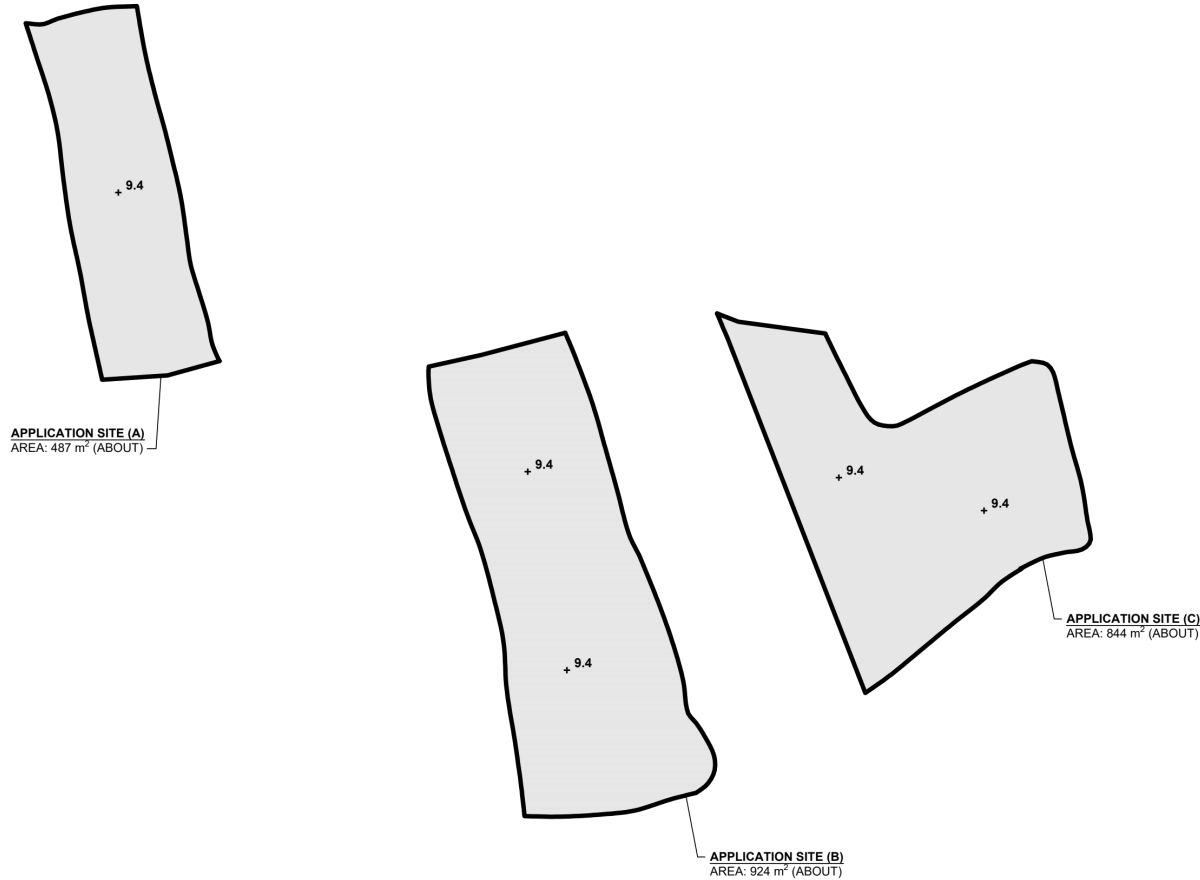
(來源：申請人於2024年6月6日呈交的資料)

(SOURCE: APPLICANT'S SUBMISSION ON 6.6.2024)

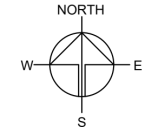
FILLING OF LAND AT THE APPLICATION SITE

APPLICATION SITE AREA	: 2,255 m ²	(ABOUT)
COVERED BY STRUCTURE	: NOT APPLICABLE	(ABOUT)
EXISTING FILLED AREA	: 2,255 m ²	(ABOUT)
DEPTH OF LAND FILLING	: NOT MORE THAN 0.2 m	
PROPOSED SITE LEVELS	: +9.4 mPD	(ABOUT)
MATERIAL OF LAND FILLING	: CONCRETE	
USE	: LOADING / UNLOADING SPACE, OPEN STORAGE AND CIRCULATION AREA	

THE APPLICATION SITES HAVE ALREADY BEEN HARD-PAVED. **NO** FURTHER FILLING OF LAND WILL BE CARRIED OUT AT THE APPLICATION SITE AFTER PLANNING APPROVAL HAS BEEN OBTAINED FROM THE TOWN PLANNING BOARD.



*SITE LEVELS ARE FOR ILLUSTRATION PURPOSE ONLY



PLANNING CONSULTANT



PROJECT

PROPOSED TEMPORARY OPEN STORAGE OF CONSTRUCTION MATERIAL AND MACHINERY WITH ANCILLARY FACILITIES FOR A PERIOD OF 3 YEARS AND ASSOCIATED FILLING OF LAND

SITE LOCATION

VARIOUS LOTS IN D.D. 82, TA KWU LING, NEW TERRITORIES

SCALE

1:50 @ A4

DRAWN BY

MN

DATE

16.5.2024

REVISED BY

DATE

APPROVED BY

DATE

DWG. TITLE

FILLING OF LAND AREA

DWG NO.

PLAN 6

VER.

001

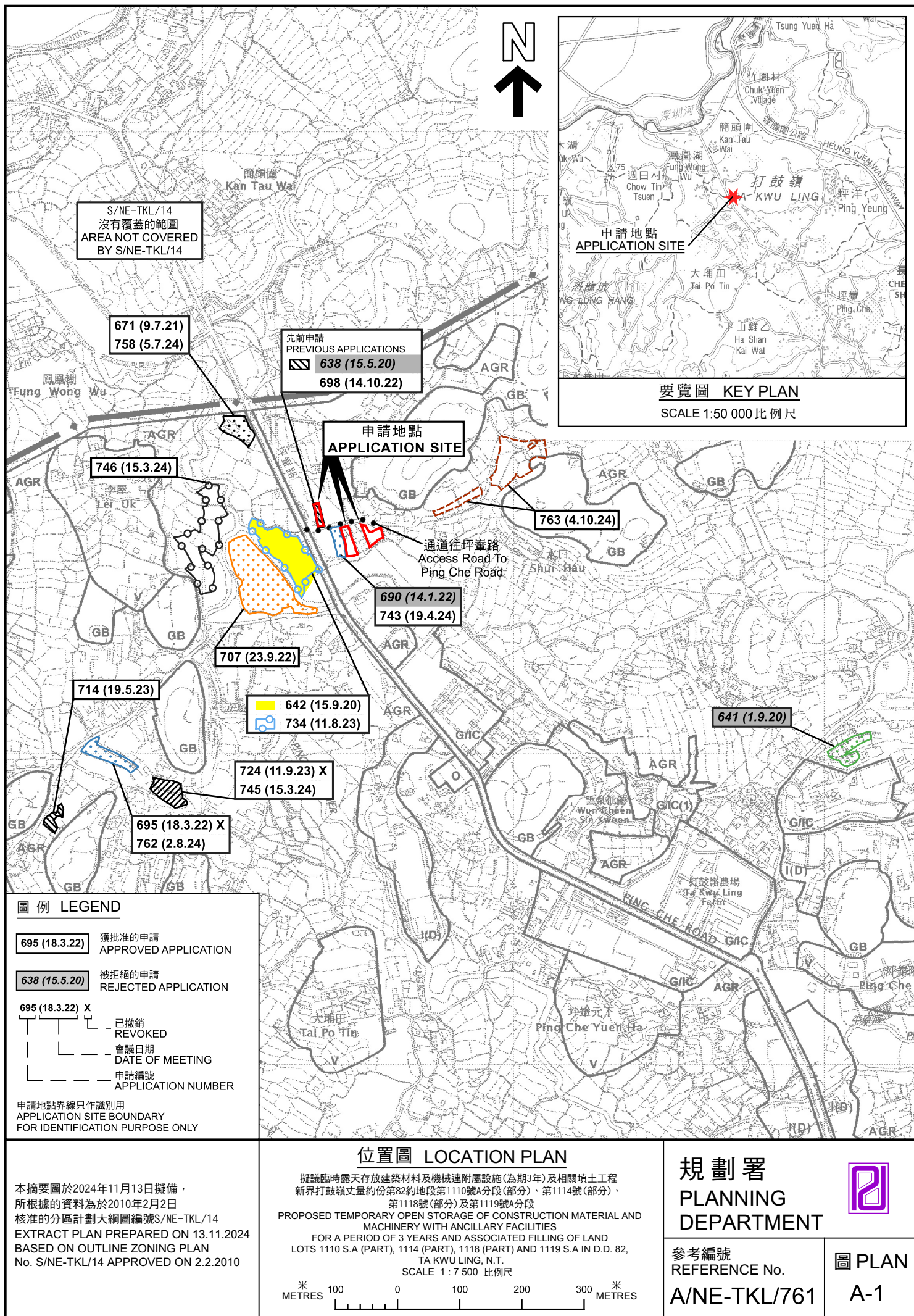
參考編號
REFERENCE No.

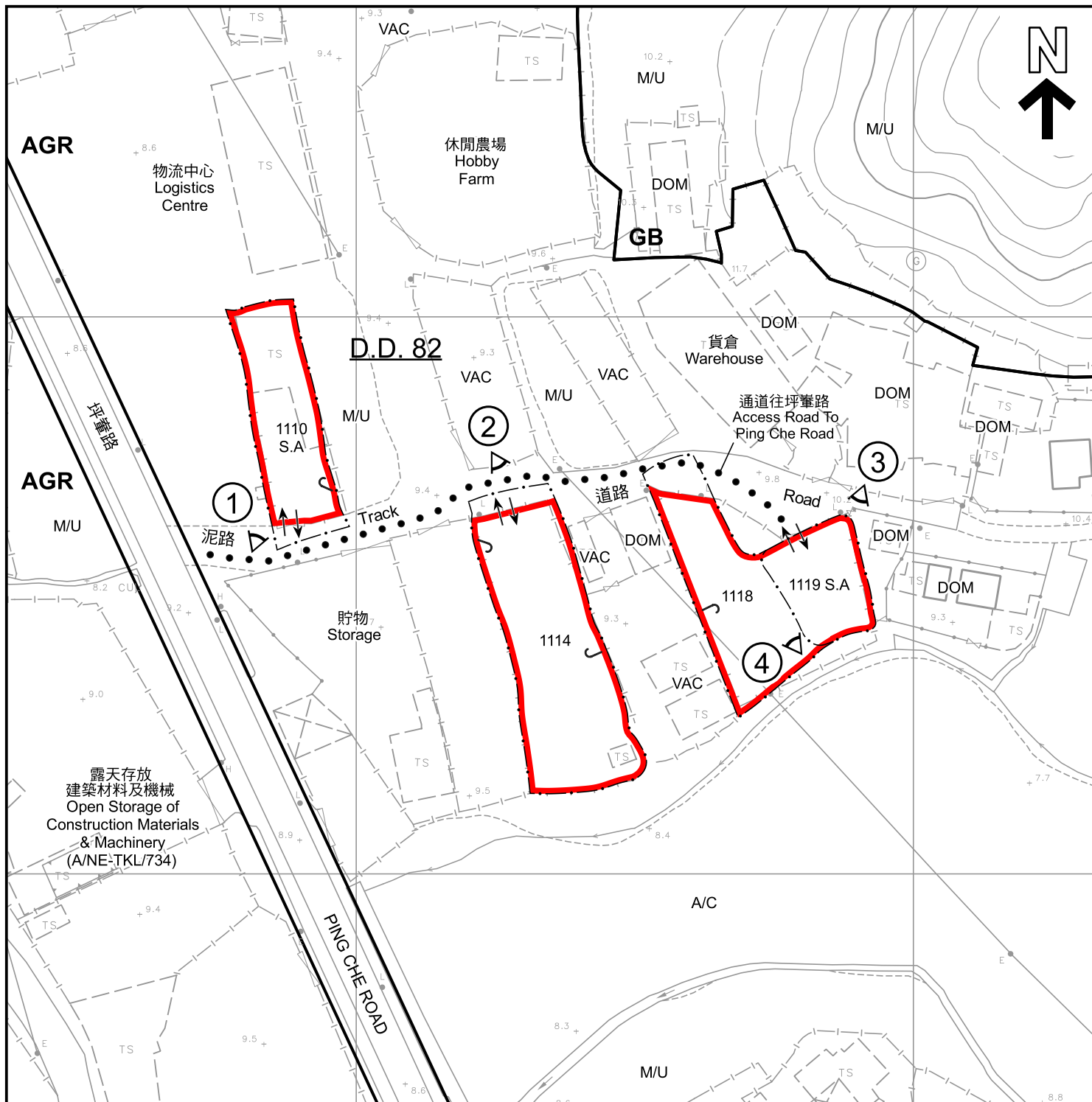
A/NE-TKL/761

繪圖

DRAWING A-2

(來源：申請人於2024年6月6日呈交的資料)
(SOURCE: APPLICANT'S SUBMISSION ON 6.6.2024)





圖例 LEGEND



申請地點 (界線只作識別用)
APPLICATION SITE (BOUNDARY FOR IDENTIFICATION PURPOSE ONLY)

AGR 農業
AGRICULTURE

GB 綠化地帶
GREEN BELT

G/IC 政府、機構或社區
GOVERNMENT, INSTITUTION
OR COMMUNITY

→ 入口/出口
INGRESS / EGRESS

A/C 常耕農地
CULTIVATED AGRICULTURAL LAND

DOM 住用構築物
DOMESTIC STRUCTURE

M/U 荒地
UNUSED LAND

VAC 空置
VACANT

① 實地照片的觀景點
VIEWING POINT OF SITE PHOTO

註釋 Notes :

- (1) 2024年7月15日勘測的土地用途
Land uses shown on this plan are in accordance with the land use survey conducted by the Planning Department on 15.7.2024

平面圖 SITE PLAN

擬議臨時露天存放建築材料及機械連附屬設施(為期3年)及相關填土工程
新界打鼓嶺丈量約份第82約地段第1110號A分段(部分)、第1114號(部分)、
第1118號(部分)及第1119號A分段

PROPOSED TEMPORARY OPEN STORAGE OF CONSTRUCTION MATERIAL AND
MACHINERY WITH ANCILLARY FACILITIES

FOR A PERIOD OF 3 YEARS AND ASSOCIATED FILLING OF LAND
LOTS 1110 S.A (PART), 1114 (PART), 1118 (PART) AND 1119 S.A IN D.D. 82,
TA KWU LING, N.T.

SCALE 1 : 1 000 比例尺

米 METRES 20 0 20 40 米 METRES

本摘要圖於2024年10月30日擬備，
所根據的資料為測量圖編號

3-NW-18A、18B、18C及18D

EXTRACT PLAN PREPARED ON 30.10.2024

BASED ON SURVEY SHEETS No.

3-NW-18A, 18B, 18C & 18D

規劃署

PLANNING

DEPARTMENT

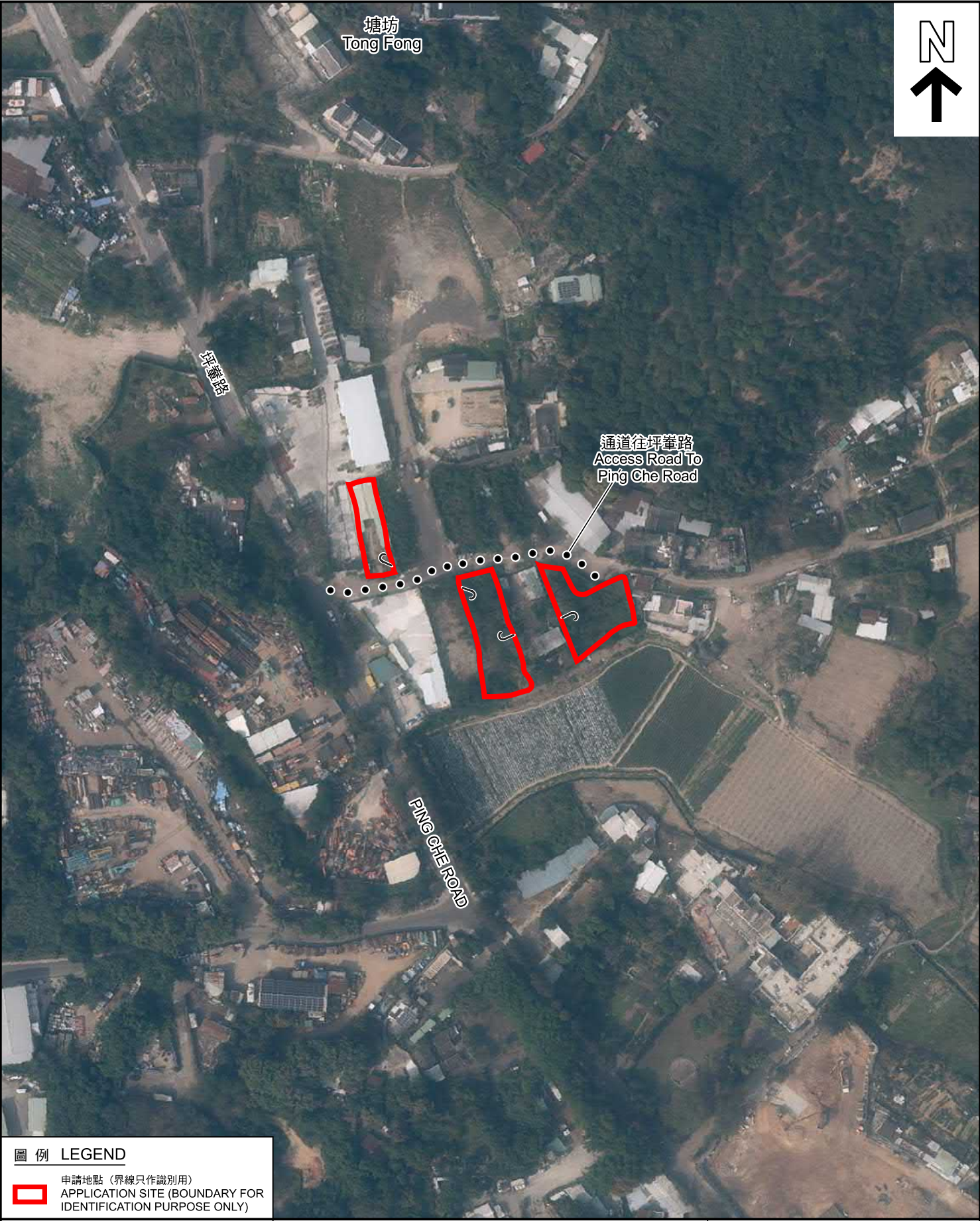


參考編號
REFERENCE No.

A/NE-TKL/761

圖 PLAN

A-2



圖例 LEGEND



申請地點 (界線只作識別用)
APPLICATION SITE (BOUNDARY FOR
IDENTIFICATION PURPOSE ONLY)

本摘要圖於2024年10月21日擬備，
所根據的資料為地政總署於2023年2月21日
拍得的航攝照片編號E183757C
EXTRACT PLAN PREPARED ON 21.10.2024
BASED ON AERIAL PHOTO No. E183757C
TAKEN ON 21.2.2023 BY
LANDS DEPARTMENT

航攝照片 AERIAL PHOTO

擬議臨時露天存放建築材料及機械連附屬設施(為期3年)及相關填土工程
新界打鼓嶺丈量約份第82約地段第1110號A分段(部分)、第1114號(部分)、
第1118號(部分)及第1119號A分段
PROPOSED TEMPORARY OPEN STORAGE OF CONSTRUCTION MATERIAL AND
MACHINERY WITH ANCILLARY FACILITIES
FOR A PERIOD OF 3 YEARS AND ASSOCIATED FILLING OF LAND
LOTS 1110 S.A (PART), 1114 (PART), 1118 (PART) AND 1119 S.A IN D.D. 82,
TA KWU LING, N.T.

規劃署
PLANNING
DEPARTMENT



參考編號
REFERENCE No.
A/NE-TKL/761

圖 PLAN
A-3a



通道往坪輦路
Access Road To
Ping Che Road

坪輦路

PING CHE ROAD

圖例 LEGEND

 申請地點 (界線只作識別用)
APPLICATION SITE (BOUNDARY FOR
IDENTIFICATION PURPOSE ONLY)

本圖於2024年10月21日擬備。
所根據的資料為地政總署於2024年7月15日
拍得的無人機照片
PLAN PREPARED ON 21.10.2024
BASED ON
UNMANNED AERIAL VEHICLE PHOTO
TAKEN ON 15.7.2024

無人機照片
UNMANNED AERIAL VEHICLE PHOTO

擬議臨時露天存放建築材料及機械連附屬設施(為期3年)及相關填土工程
新界打鼓嶺丈量約份第82約地段第1110號A分段(部分)、第1114號(部分)、
第1118號(部分)及第1119號A分段
PROPOSED TEMPORARY OPEN STORAGE OF CONSTRUCTION MATERIAL AND
MACHINERY WITH ANCILLARY FACILITIES
FOR A PERIOD OF 3 YEARS AND ASSOCIATED FILLING OF LAND
LOTS 1110 S.A (PART), 1114 (PART), 1118 (PART) AND 1119 S.A IN D.D. 82,
TA KWU LING, N.T.

規劃署
PLANNING
DEPARTMENT



參考編號
REFERENCE No.
A/NE-TKL/761

圖 PLAN
A-3b



實地照片 SITE PHOTOS

本圖於2024年10月21日擬備，
所根據的資料為攝於2024年6月14日
的實地照片
PLAN PREPARED ON 21.10.2024
BASED ON SITE PHOTOS TAKEN ON
14.6.2024

擬議臨時露天存放建築材料及機械連附屬設施(為期3年)及相關填土工程
新界打鼓嶺丈量約份第82約地段第1110號A分段(部分)、第1114號(部分)、
第1118號(部分)及第1119號A分段
PROPOSED TEMPORARY OPEN STORAGE OF CONSTRUCTION MATERIAL AND
MACHINERY WITH ANCILLARY FACILITIES
FOR A PERIOD OF 3 YEARS AND ASSOCIATED FILLING OF LAND
LOTS 1110 S.A (PART), 1114 (PART), 1118 (PART) AND 1119 S.A IN D.D. 82,
TA KWU LING, N.T.

規劃署
PLANNING
DEPARTMENT



參考編號
REFERENCE No.
A/NE-TKL/761

圖 PLAN
A-4a



攝於2024年6月14日的實地照片
SITE PHOTO TAKEN ON 14.6.2024



攝於2024年7月15日的實地照片
SITE PHOTO TAKEN ON 15.7.2024

申請地點界線只作識別用
APPLICATION SITE BOUNDARY FOR IDENTIFICATION PURPOSE ONLY

實地照片 SITE PHOTOS

本圖於2024年10月21日擬備，
所根據的資料為攝於2024年6月14日及
7月15日的實地照片
PLAN PREPARED ON 21.10.2024
BASED ON SITE PHOTOS TAKEN ON
14.6.2024 & 15.7.2024

擬議臨時露天存放建築材料及機械連附屬設施(為期3年)及相關填土工程
新界打鼓嶺丈量約份第82約地段第1110號A分段(部分)、第1114號(部分)、
第1118號(部分)及第1119號A分段
PROPOSED TEMPORARY OPEN STORAGE OF CONSTRUCTION MATERIAL AND
MACHINERY WITH ANCILLARY FACILITIES
FOR A PERIOD OF 3 YEARS AND ASSOCIATED FILLING OF LAND
LOTS 1110 S.A (PART), 1114 (PART), 1118 (PART) AND 1119 S.A IN D.D. 82,
TA KWU LING, N.T.

規劃署
PLANNING
DEPARTMENT



參考編號
REFERENCE No.
A/NE-TKL/761

圖 PLAN
A-4b