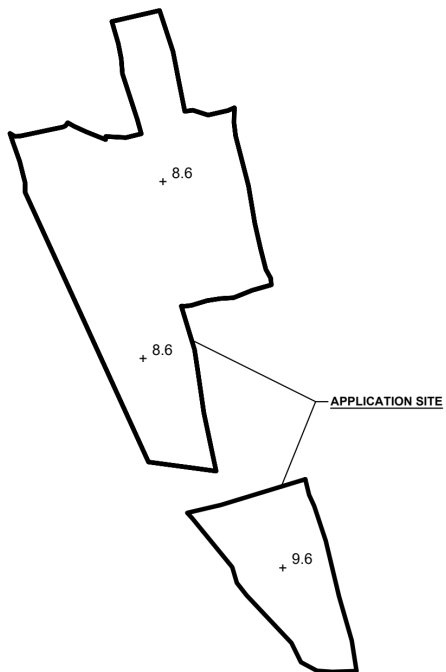


THE APPLICATION SITE BEFORE FILLING OF LAND

APPLICATION SITE AREA : 4,023 m² (ABOUT)
 SITE LEVEL : +8.6 mPD - 9.6 mPD (ABOUT)



LEGEND

APPLICATION SITE
 + 9.6 SITE LEVEL BEFORE LAND FILLING

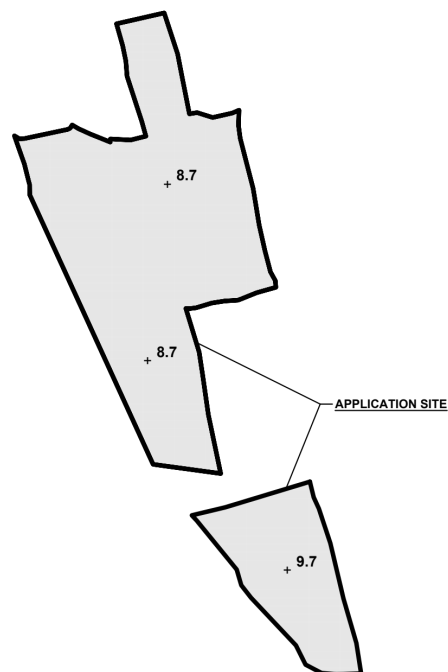
SITE LEVELS ARE FOR REFERENCE ONLY.

EXISTING FILLED AREA OF THE APPLICATION SITE

APPLICATION SITE AREA : 4,023 m² (ABOUT)
 COVERED BY STRUCTURE : 588 m² (ABOUT)

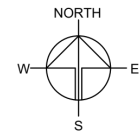
EXISTING FILLED AREA : 4,023m² (ABOUT)
 DEPTH OF LAND FILLING : NOT MORE THAN 0.1 m
 EXISTING SITE LEVELS : +8.7 mPD - 9.7 mPD (ABOUT)
 MATERIAL OF LAND FILLING : CONCRETE
 USE : SITE FORMATION OF STRUCTURES, AND CIRCULATION SPACE

*THE APPLICATION SITE HAS ALREADY BEEN HARD-PAVED. NO FURTHER FILLING OF LAND WILL BE CARRIED OUT AT THE SITE AFTER PLANNING PERMISSION HAS BEEN GRANTED FROM THE TOWN PLANNING BOARD.



LEGEND

APPLICATION SITE
 EXISTING FILLED AREA
 + 9.7 EXISTING FILLED LEVELS



PLANNING CONSULTANT



PROJECT

TEMPORARY LOGISTICS CENTRE WITH ANCILLARY PARKING OF CONTAINER VEHICLES AND OFFICE FOR A PERIOD OF 3 YEARS AND FILLING OF LAND

SITE LOCATION

VARIOUS LOTS IN D.D. 82, PING CHE ROAD, TA KWU LING, NEW TERRITORIES

SCALE

1:1500 @ A1

DRAWN BY

MN

DATE

11.7.2024

REVISED BY

DATE

APPROVED BY

DATE

DWG. TITLE

FILLING OF LAND

DWG NO.

PLAN 6

VER.

001

參考編號
 REFERENCE No.

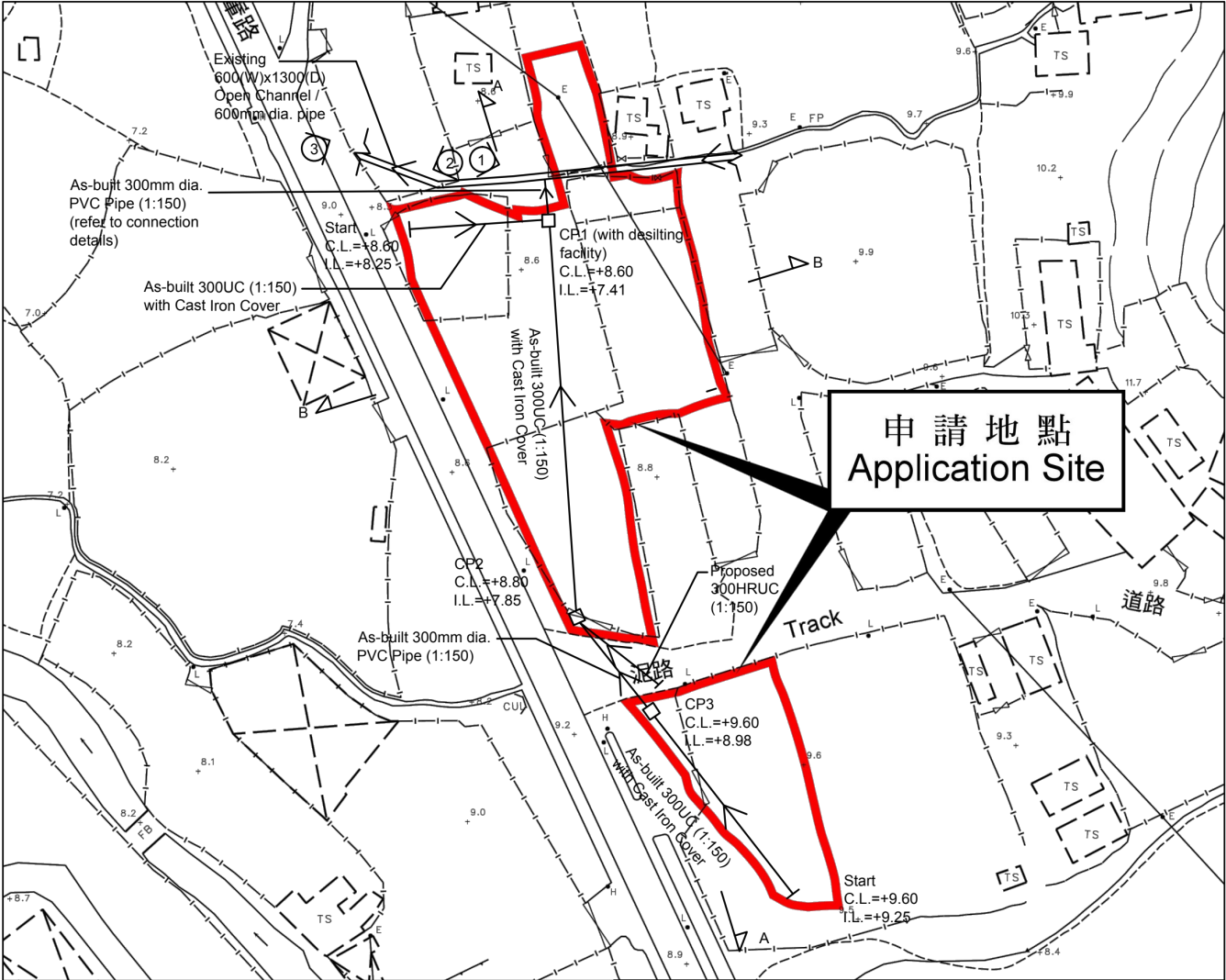
A/NE-TKL/778

繪圖

DRAWING A-2

(來源：申請人於2024年9月27日呈交的資料)

(SOURCE：APPLICANT'S SUBMISSION ON 27.9.2024)



Note:

- Catchpits (CP1) with desilting facility shall follow CEDD standard drawing No. C24061.
- Catchpit and UC follows Typical Details of Geotechnical Manual for Slope Fig.8.10 and Fig.8.11 respectively.

LEGEND

- CP As-built CatchPit
- As-built 300UC (1:150) with Cast Iron Cover
- ⇒ Existing 600(w)x1300(D) Open Channel

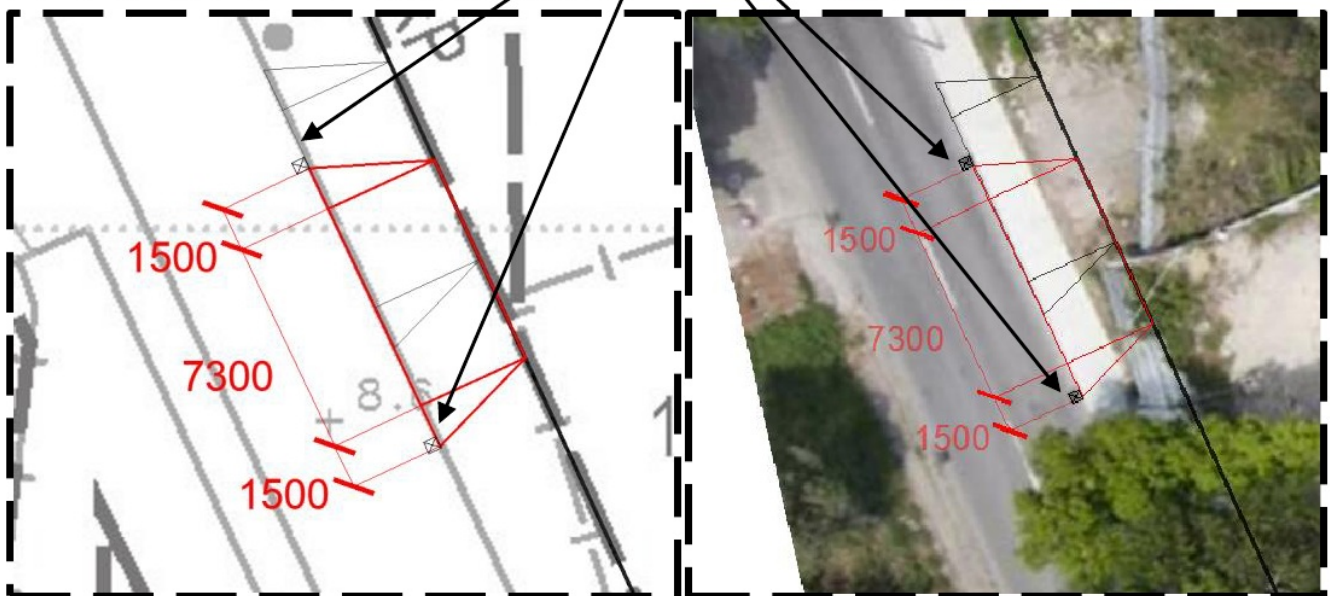
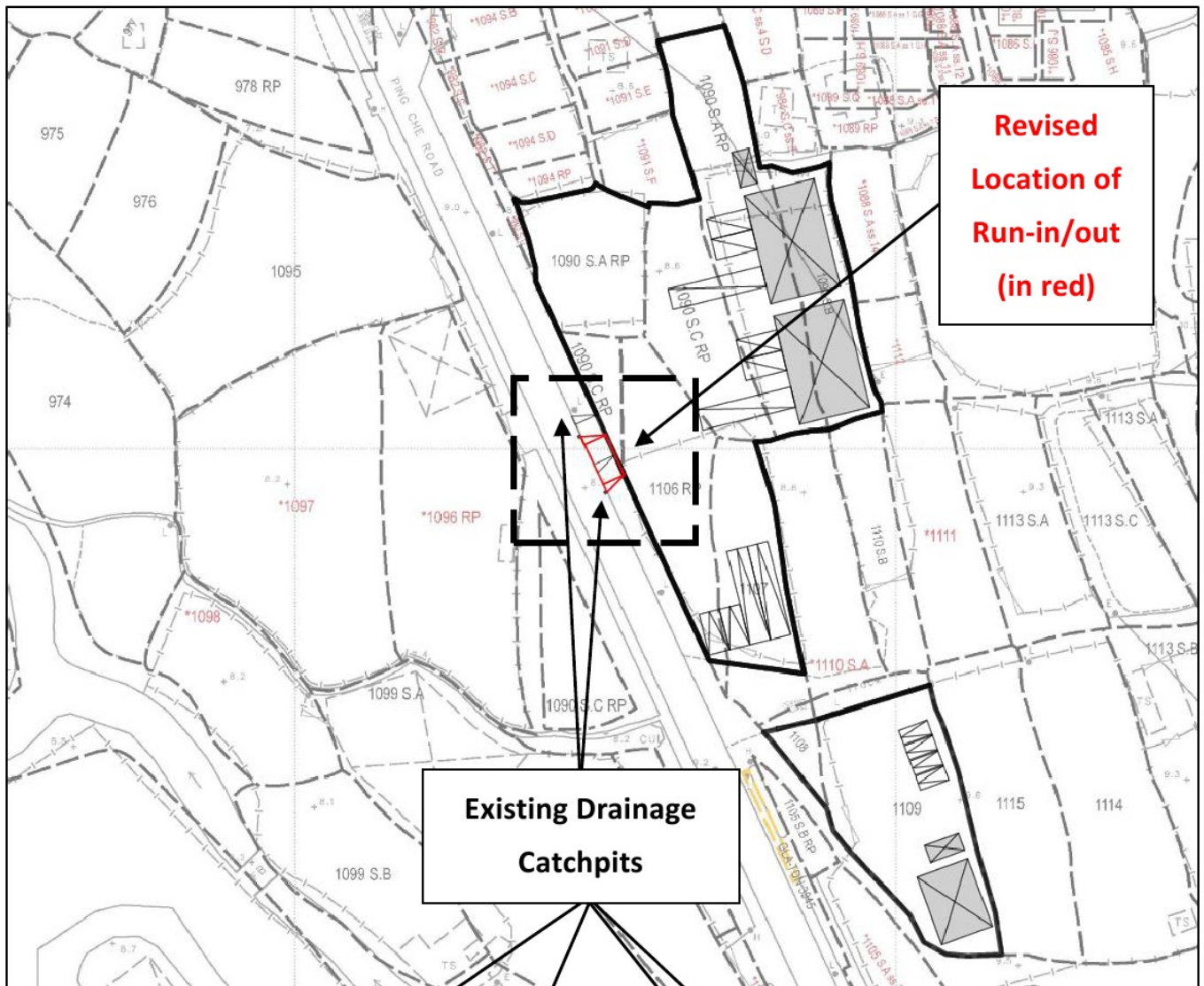
CONNECTION DETAILS

The diagram shows a cross-section where an 'Existing 0.6m(W)x1.3m(D) open channel' meets an 'As-built 300UPVC Pipe'. The ground level (G.L.) is +8.60, and the pipe invert level (I.L.) is +7.40. The channel bed is at G.L. +7.30. A 'FALL' is indicated, and '50mm cement mortar grouting' is shown at the joint.

<div>正宏工程顧問公司</div> <div>CHING WAN ENGINEERING CONSULTANTS CO.</div>	Title:		
	Drainage Proposal		D01
	Drawn by:	Date:	
	DM	23-3-2023	
<div>Project</div> <div>Proposed Temporary Logistics Centre with Ancillary Parking of Container Vehicles and Office for a Period of 3 Years and Filling of Land at Lots 1090 S.A. RP (Part), 1090 S.B., 1090 S.C. RP (Part), 1106 RP (Part), 1107 (Part), 1108 (Part) and 1109 (Part) in D.D. 82, Ping Che Road, Ta Kwu Ling, New Territories (Application No.:A/NE-TKL/687)</div>	Check by:	Scale:	
	DM	-----	

參考編號 REFERENCE No.	A/NE-TKL/778	繪圖 DRAWING A-3
-----------------------	--------------	-------------------

(來源：申請人於2024年9月27日呈交的資料)
 (SOURCE：APPLICANT'S SUBMISSION ON 27.9.2024)



Designed design of the proposed run-in/out.

參考編號
REFERENCE No.

A/NE-TKL/778

繪圖

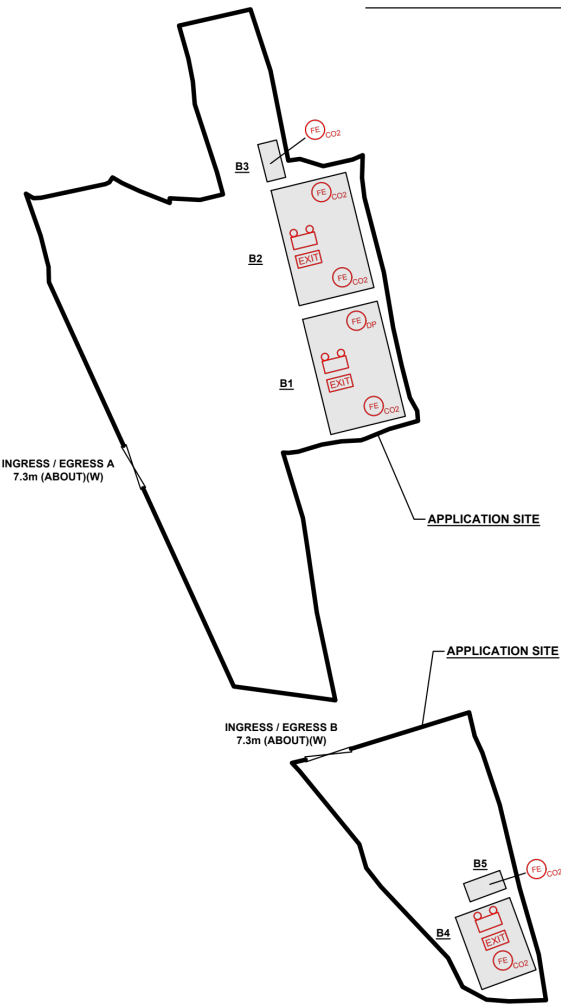
DRAWING A-4

(來源：申請人於2024年9月27日呈交的資料)

(SOURCE：APPLICANT'S SUBMISSION ON 27.9.2024)

DEVELOPMENT PARAMETERS		
APPLICATION SITE AREA	: 4,023 m ²	(ABOUT)
COVERED AREA	: 588 m ²	(ABOUT)
UNCOVERED AREA	: 3,435 m ²	(ABOUT)
PLOT RATIO	: 0.15	(ABOUT)
SITE COVERAGE	: 15 %	(ABOUT)
NO. OF STRUCTURE	: 5	
DOMESTIC GFA	: NOT APPLICABLE	
NON-DOMESTIC GFA	: 588 m ²	(ABOUT)
TOTAL GFA	: 588 m ²	(ABOUT)
BUILDING HEIGHT	: 3.5 m - 5.5 m	
NO. OF STOREY	: 1	

STRUCTURE	USE	COVERED AREA AREA	GFA	BUILDING HEIGHT
B1	LOGISTICS CENTRE	222m ² (ABOUT)	222m ² (ABOUT)	5.5m (ABOUT)(1-STOREY)
B2	LOGISTICS CENTRE	222m ² (ABOUT)	222m ² (ABOUT)	5.5m (ABOUT)(1-STOREY)
B3	PORTABLE TOILET	18m ² (ABOUT)	18m ² (ABOUT)	3.5m (ABOUT)(1-STOREY)
B4	SITE OFFICE	108m ² (ABOUT)	108m ² (ABOUT)	3.5m (ABOUT)(1-STOREY)
B5	PORTABLE TOILET	18m ² (ABOUT)	18m ² (ABOUT)	3.5m (ABOUT)(1-STOREY)
TOTAL		588m ² (ABOUT)	588m ² (ABOUT)	



FIRE SERVICE INSTALLATIONS	
	EMERGENCY LIGHT
	EXIT SIGN
	5 KG CO2 TYPE FIRE EXTINGUISHER
FS NOTES:	
1. SUFFICIENT EMERGENCY LIGHTING SHALL BE PROVIDED THROUGHOUT THE ENTIRE BUILDING IN ACCORDANCE WITH BS5266-1:2016 AND BS EN1838:2013 AND FSD CIRCULAR LETTER 6/2021	
2. SUFFICIENT DIRECTIONAL AND EXIT SIGN SHALL BE PROVIDED IN ACCORDANCE WITH BS5266: PART 1 AND FSD CIRCULAR LETTER 5/2008.	
3. PORTABLE HAND-OPERATED APPROVED APPLIANCE SHALL BE PROVIDED AS REQUIRED BY OCCUPANCY.	
4. ACCESS IS PROVIDED FOR EMERGENCY VEHICLE TO REACH 30m OF ALL PART OF STRUCTURES.	

LEGEND	
	APPLICATION SITE
	STRUCTURE
	INGRESS / EGRESS

PLANNING CONSULTANT	
PROJECT	
TEMPORARY CENTRE WITH LOGISTICS CENTRE WITH ANCILLARY PARKING OF CONTAINER VEHICLES AND OFFICE FOR A PERIOD OF 3 YEARS AND FILLING OF LAND	
SITE LOCATION	
VARIOUS LOTS IN D.D. 82, PING CHE ROAD, TA KWU LING, NEW TERRITORIES	
SCALE	
1:1000 @ A4	
DRAWN BY	DATE
MN	6.8.2024
REVISED BY	DATE
APPROVED BY	DATE
DWG. TITLE	
LAYOUT PLAN	
DWG NO.	VER.
APPENDIX VI	001

參考編號
REFERENCE No.

A/NE-TKL/778

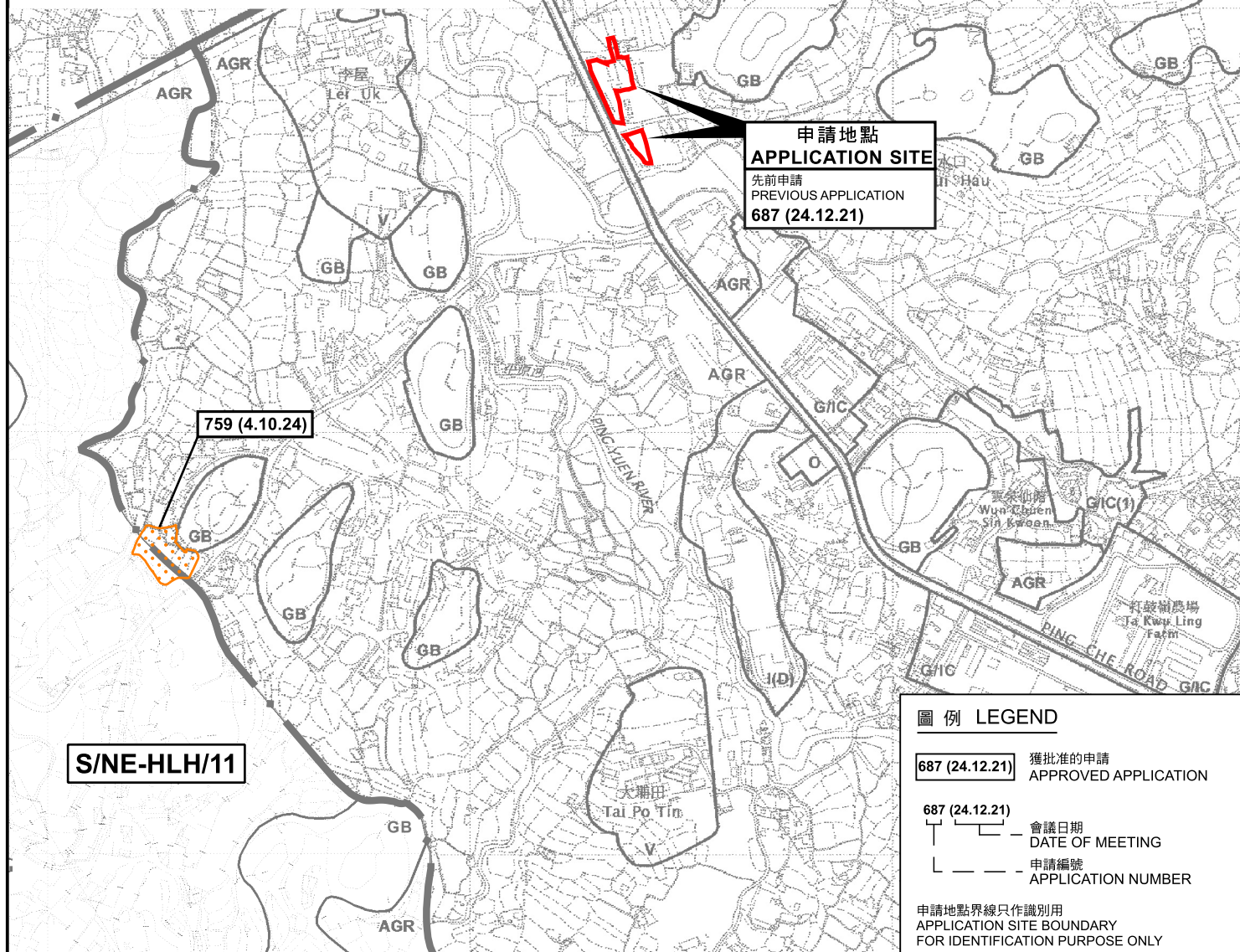
繪圖
DRAWING A-5

(來源：申請人於2024年9月27日呈交的資料)
(SOURCE：APPLICANT'S SUBMISSION ON 27.9.2024)



要覽圖 KEY PLAN

SCALE 1:50 000 比例尺



圖例 LEGEND

687 (24.12.21) 獲批准的申請
APPROVED APPLICATION

687 (24.12.21)
會議日期
DATE OF MEETING
申請編號
APPLICATION NUMBER

申請地點界線只作識別用
APPLICATION SITE BOUNDARY
FOR IDENTIFICATION PURPOSE ONLY

位置圖 LOCATION PLAN

臨時物流中心及附屬貨櫃車泊車位和辦公室的規劃許可續期(為期3年)及相關填土工程
新界打鼓嶺坪輦路丈量約份第82約地段第1090號A分段餘段(部分)、第1090號B分段、
第1090號C分段餘段(部分)、第1106號餘段(部分)、第1107號(部分)、
第1108號(部分)及第1109號(部分)
RENEWAL OF PLANNING APPROVAL FOR TEMPORARY LOGISTICS CENTRE WITH
ANCILLARY PARKING OF CONTAINER VEHICLES AND OFFICE
FOR A PERIOD OF 3 YEARS AND ASSOCIATED FILLING OF LAND
LOTS 1090 S.A RP (PART), 1090 S.B, 1090 S.C RP (PART), 1106 RP (PART), 1107 (PART),
1108 (PART) AND 1109 (PART) IN D.D. 82, PING CHE ROAD, TA KWU LING, N.T.
SCALE 1:7 500 比例尺

米 100 0 100 200 300 米
METRES

規劃署
PLANNING
DEPARTMENT



參考編號
REFERENCE No.
A/NE-TKL/778

圖 PLAN
A-1

本摘要圖於2024年11月18日擬備，
所根據的資料為：
於2017年12月5日核准的
分區計劃大綱圖編號S/NE-HLH/11及
於2010年2月2日核准的
分區計劃大綱圖編號S/NE-TKL/14
EXTRACT PLAN PREPARED ON 18.11.2024
BASED ON OUTLINE ZONING PLANS No.
S/NE-HLH/11 APPROVED ON 5.12.2017 AND
S/NE-TKL/14 APPROVED ON 2.2.2010



圖例 LEGEND



申請地點 (界線只作識別用)
APPLICATION SITE (BOUNDARY FOR
IDENTIFICATION PURPOSE ONLY)

本摘要圖於2024年11月18日擬備，
所根據的資料為地政總署於2023年2月21日及22日
拍得的航攝照片編號E183659C及E183964C
EXTRACT PLAN PREPARED ON 18.11.2024
BASED ON AERIAL PHOTOS No. E183659C &
E183964C TAKEN ON 21 & 22.2.2023 BY
LANDS DEPARTMENT

航攝照片 AERIAL PHOTO

臨時物流中心及附屬貨櫃車泊車位和辦公室的規劃許可續期(為期3年)及相關填土工程
新界打鼓嶺坪輦路丈量約份第82約地段第1090號A分段餘段(部分)、第1090號B分段、
第1090號C分段餘段(部分)、第1106號餘段(部分)、第1107號(部分)、
第1108號(部分)及第1109號(部分)
RENEWAL OF PLANNING APPROVAL FOR TEMPORARY LOGISTICS CENTRE WITH
ANCILLARY PARKING OF CONTAINER VEHICLES AND OFFICE
FOR A PERIOD OF 3 YEARS AND ASSOCIATED FILLING OF LAND
LOTS 1090 S.A RP (PART), 1090 S.B, 1090 S.C RP (PART), 1106 RP (PART), 1107 (PART),
1108 (PART) AND 1109 (PART) IN D.D. 82, PING CHE ROAD, TA KWU LING, N.T.

規劃署
PLANNING
DEPARTMENT



參考編號
REFERENCE No.
A/NE-TKL/778

圖 PLAN
A-3



實地照片 SITE PHOTOS

本圖於2024年11月18日擬備，
所根據的資料為攝於2024年10月14日
的實地照片
PLAN PREPARED ON 18.11.2024
BASED ON SITE PHOTOS TAKEN ON
14.10.2024

臨時物流中心及附屬貨櫃車泊車位和辦公室的規劃許可續期(為期3年)及相關填土工程
新界打鼓嶺坪輦路丈量約份第82約地段第1090號A分段餘段(部分)、第1090號B分段、
第1090號C分段餘段(部分)、第1106號餘段(部分)、第1107號(部分)、
第1108號(部分)及第1109號(部分)
RENEWAL OF PLANNING APPROVAL FOR TEMPORARY LOGISTICS CENTRE WITH
ANCILLARY PARKING OF CONTAINER VEHICLES AND OFFICE
FOR A PERIOD OF 3 YEARS AND ASSOCIATED FILLING OF LAND
LOTS 1090 S.A RP (PART), 1090 S.B, 1090 S.C RP (PART), 1106 RP (PART), 1107 (PART),
1108 (PART) AND 1109 (PART) IN D.D. 82, PING CHE ROAD, TA KWU LING, N.T.

規劃署
PLANNING
DEPARTMENT



參考編號
REFERENCE No.
A/NE-TKL/778

圖 PLAN
A-4