



PROJECT

TRANSITIONAL HOUSING
PROJECT AT GOVERNMENT
LAND AT SHUEN WAN, OFF
TING KOK ROAD, TAI PO
(FORMER SHUEN WAN EU
TONG SEN SCHOOL)

DRAWING PURPOSES

CONCEPT DRAWING

DRAWING TITLE

PROPOSED MASTER PLAN
LAYOUT

- Site Boundary
- Paving/ Open Areas
- Green Area
- Proposed Transitional
Housing Block
- Convenience Store
- E&M Plant Room

ARCHITECTURAL
DESIGN

UDP INTERNATIONAL
SCALE



Drafted By: Architect

Designed By: Architect

Checked By: Queenie Huang

Approved By: Sujata Govada

參考編號
REFERENCE No. A/NE-TK/753 繪圖 DRAWING A-1

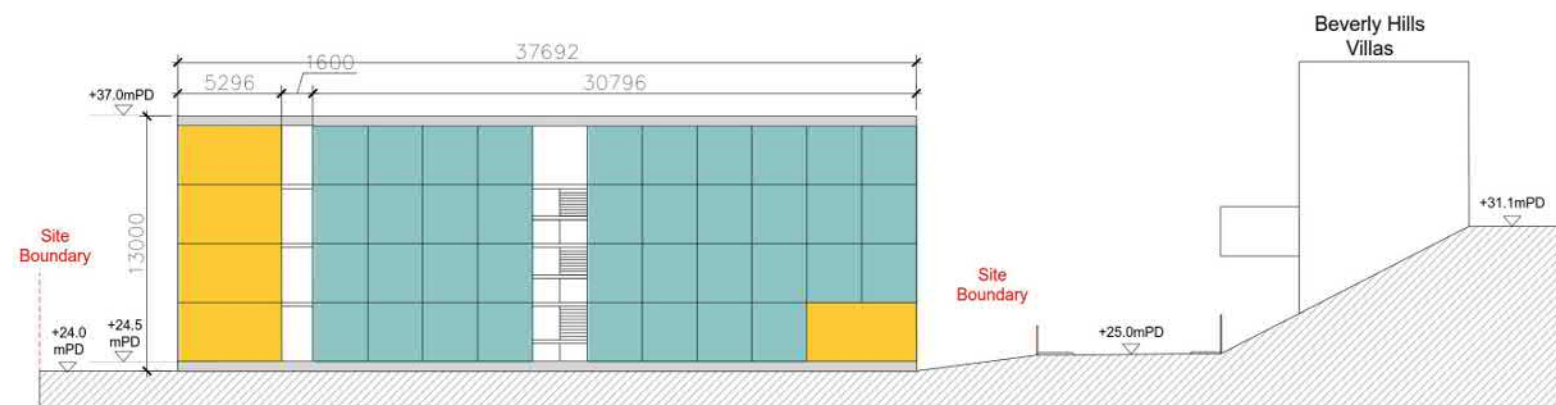
(來源：申請人建議書)
(SOURCE: APPLICANT'S SUBMISSION PLAN)



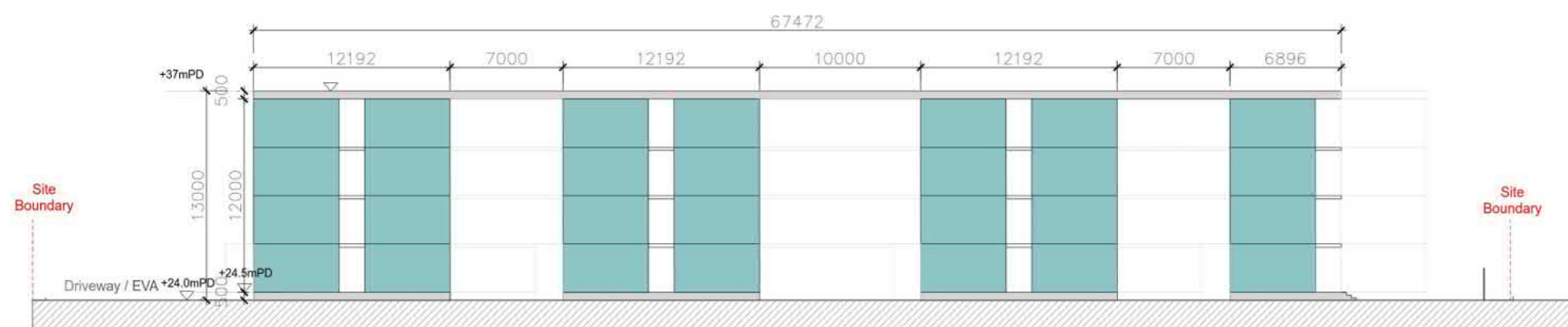
| | |
|--|---|
| PROJECT | TRANSITIONAL HOUSING PROJECT AT GOVERNMENT LAND AT SHUEN WAN, OFF TING KOK ROAD, TAI PO (FORMER SHUEN WAN EU TONG SEN SCHOOL) |
| DRAWING PURPOSES | CONCEPT DRAWING |
| DRAWING TITLE | GROUND FLOOR PLAN - MASTER LAYOUT |
| <div><div></div>Site Boundary</div> <div><div></div>Single Unit (1-2P)</div> <div><div></div>Double Unit (3-4P)</div> <div><div></div>Corridor/Stairs</div> <div><div></div>Ancillary Facilities (Plant Room, Mail Collection, Refuse Area)</div> <div><div></div>Convenience Store</div> <div><div></div>E&M Plant Room</div> <div><div></div>Management/Office</div> <div><div></div>Multipurpose Hall</div> | |
| ARCHITECTURAL DESIGN | <div>UDP INTERNATIONAL SCALE</div> <div>International</div> |
| Drafted By: Architect | |
| Designed By: Architect | |
| Checked By: Queenie Huang | |
| Approved By: Sujata Govada | |



| | |
|--|---|
| PROJECT | TRANSITIONAL HOUSING PROJECT AT GOVERNMENT LAND AT SHUEN WAN, OFF TING KOK ROAD, TAI PO (FORMER SHUEN WAN EU TONG SEN SCHOOL) |
| DRAWING PURPOSES | CONCEPT DRAWING |
| DRAWING TITLE | TYPICAL FLOOR PLAN (1/F -3/F) - MASTER LAYOUT |
| <div><div></div>Site Boundary</div> <div><div></div>Single Unit (1-2P)</div> <div><div></div>Double Unit (3-4P)</div> <div><div></div>Corridor/Stairs</div> <div><div></div>Ancillary Facilities (Plant Room, Mail Collection, Refuse Area)</div> <div><div></div>Convenience Store</div> <div><div></div>E&M Plant Room</div> <div><div></div>Management/Office</div> <div><div></div>Multipurpose Hall</div> | |
| ARCHITECTURAL DESIGN | UDP INTERNATIONAL SCALE |
| <div><div></div>International</div> | |
| Drafted By: Architect | |
| Designed By: Architect | |
| Checked By: Queenie Huang | |
| Approved By: Sujata Govada | |



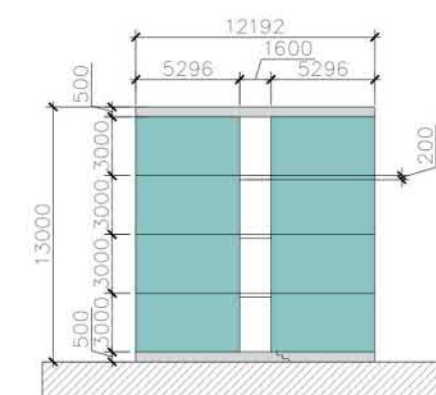
SECTION B



SECTION A



SECTION C



TYPICAL BLOCK SECTION



KEY PLAN

PROJECT

TRANSITIONAL HOUSING
PROJECT AT GOVERNMENT
LAND AT SHUEN WAN, OFF
TING KOK ROAD, TAI PO
(FORMER SHUEN WAN EU
TONG SEN SCHOOL)

DRAWING PURPOSES

CONCEPT DRAWING

DRAWING TITLE

PROPOSED TRANSITIONAL
HOUSING BUILDING
SECTIONS

- Single Unit (1-2P)
- Double Unit (3-4P)
- Roof & Foundation
- Corridor/Stairs
- Ancillary Facilities (Plant Room, Mail Collection, Refuse Area)
- Convenience Store
- E&M Plant Room
- Management/Office
- Multipurpose Hall

ARCHITECTURAL
DESIGN

UDP INTERNATIONAL
SCALE



Drafted By: Architect

Designed By: Architect

Checked By: Queenie Huang

Approved By: Sujata Govada

GROUND FLOOR PLAN



TYPICAL FLOOR PLAN
(1/F -3/F)



PROJECT

TRANSITIONAL HOUSING
PROJECT AT GOVERNMENT
LAND AT SHUEN WAN, OFF
TING KOK ROAD, TAI PO
(FORMER SHUEN WAN EU
TONG SEN SCHOOL)

DRAWING PURPOSES

CONCEPT DRAWING

DRAWING TITLE

TYPICAL BLOCK LAYOUT

- Single Unit (1-2P)
- Double Unit (3-4P)
- Corridor/Stairs
- Ancillary Facilities (Plant Room, Mail Collection, Refuse Area)
- Convenience Store
- E&M Plant Room
- Management/Office
- Multipurpose Hall

ARCHITECTURAL
DESIGN

UDP INTERNATIONAL
SCALE



Drafted By: Architect

Designed By: Architect

Checked By: Queenie Huang

Approved By: Sujata Govada

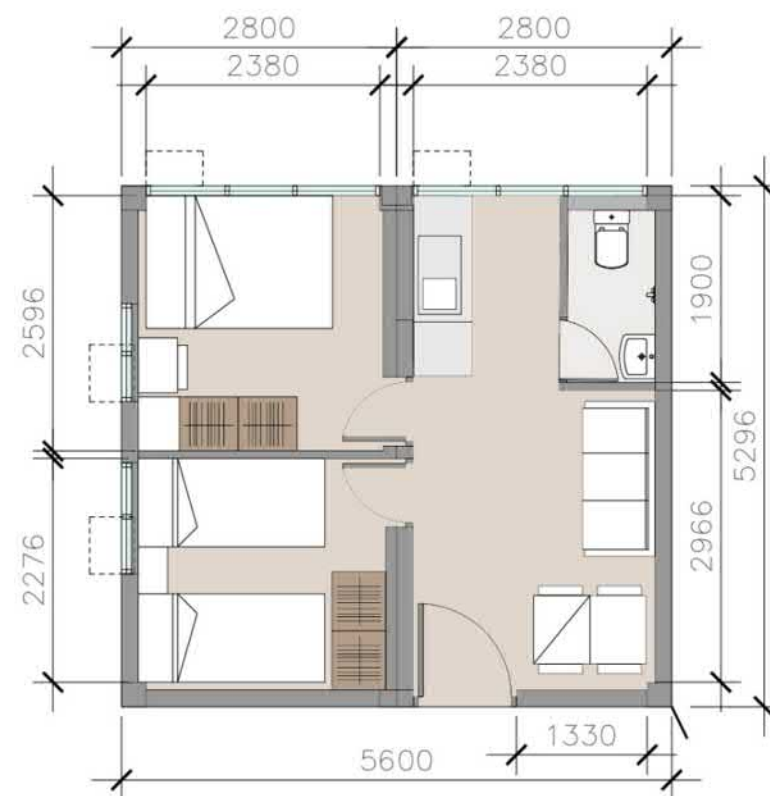
參考編號
REFERENCE No. A/NE-TK/753

繪圖 DRAWING A-5



SINGLE UNIT
(1-2P)

Dim: 5296mm (L) x 2800mm (W)



DOUBLE UNIT
(3-4P)

Dim: 5296mm (L) x 5600mm (W)

| |
|--|
| PROJECT |
| TRANSITIONAL HOUSING PROJECT AT GOVERNMENT LAND AT SHUEN WAN, OFF TING KOK ROAD, TAI PO (FORMER SHUEN WAN EU TONG SEN SCHOOL) |
| DRAWING PURPOSES |
| CONCEPT DRAWING |
| DRAWING TITLE |
| UNIT LAYOUT |
| ARCHITECTURAL DESIGN |
| UDP INTERNATIONAL SCALE |
| Drafted By: Architect |
| Designed By: Architect |
| Checked By: Queenie Huang |
| Approved By: Sujata Govada |



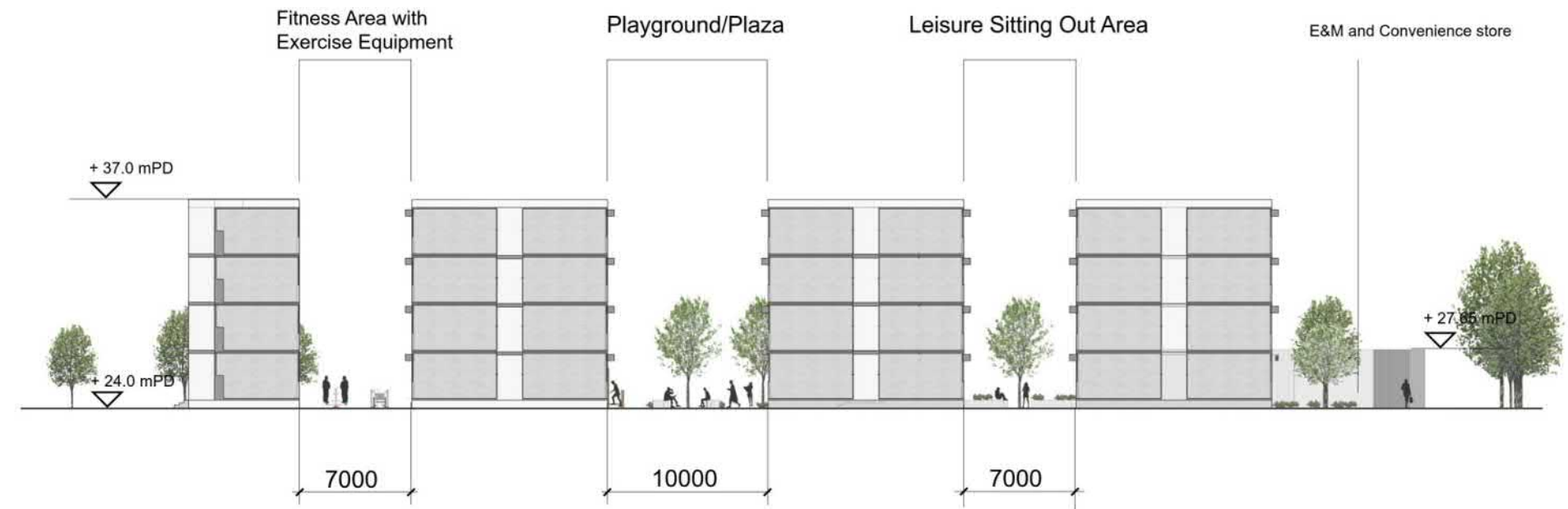


KEY PLAN

PROJECT
TRANSITIONAL HOUSING
PROJECT AT GOVERNMENT
LAND AT SHUEN WAN, OFF
TING KOK ROAD, TAI PO
(FORMER SHUEN WAN EU
TONG SEN SCHOOL)

DRAWING PURPOSES
CONCEPT DRAWING

DRAWING TITLE
LANDSCAPE SECTION



SECTION A-A

LEAD AND LAND-
SCAPE MASTER PLAN
CONSULTANT
UDP INTERNATIONAL
SCALE



DRAFTED BY: LANDSCAPE ARCHITECT
DESIGNED BY: LANDSCAPE ARCHITECT
CHECKED BY: QUEENIE
APPROVED BY: SUJATA GOVADA

Planning & Design Services

3D rendered view



UDP International

0

參考編號
REFERENCE No. A/NE-TK/753

繪圖 DRAWING A-9

(來源：申請人建議書)
(SOURCE: APPLICANT'S SUBMISSION PLAN)

Planning & Design Services

3D rendered view



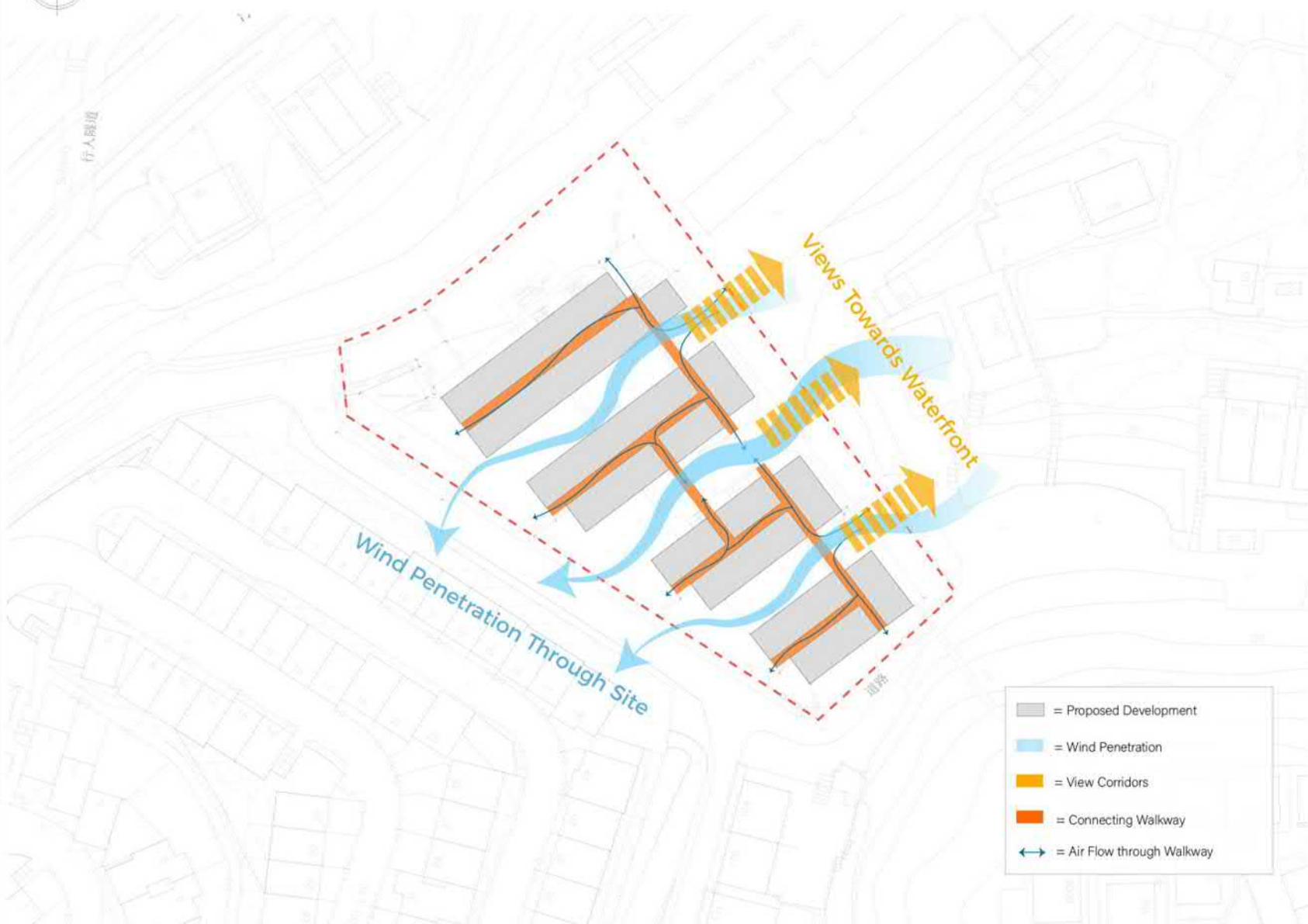
UDP International

1

參考編號
REFERENCE No. A/NE-TK/753

繪圖 DRAWING A-10

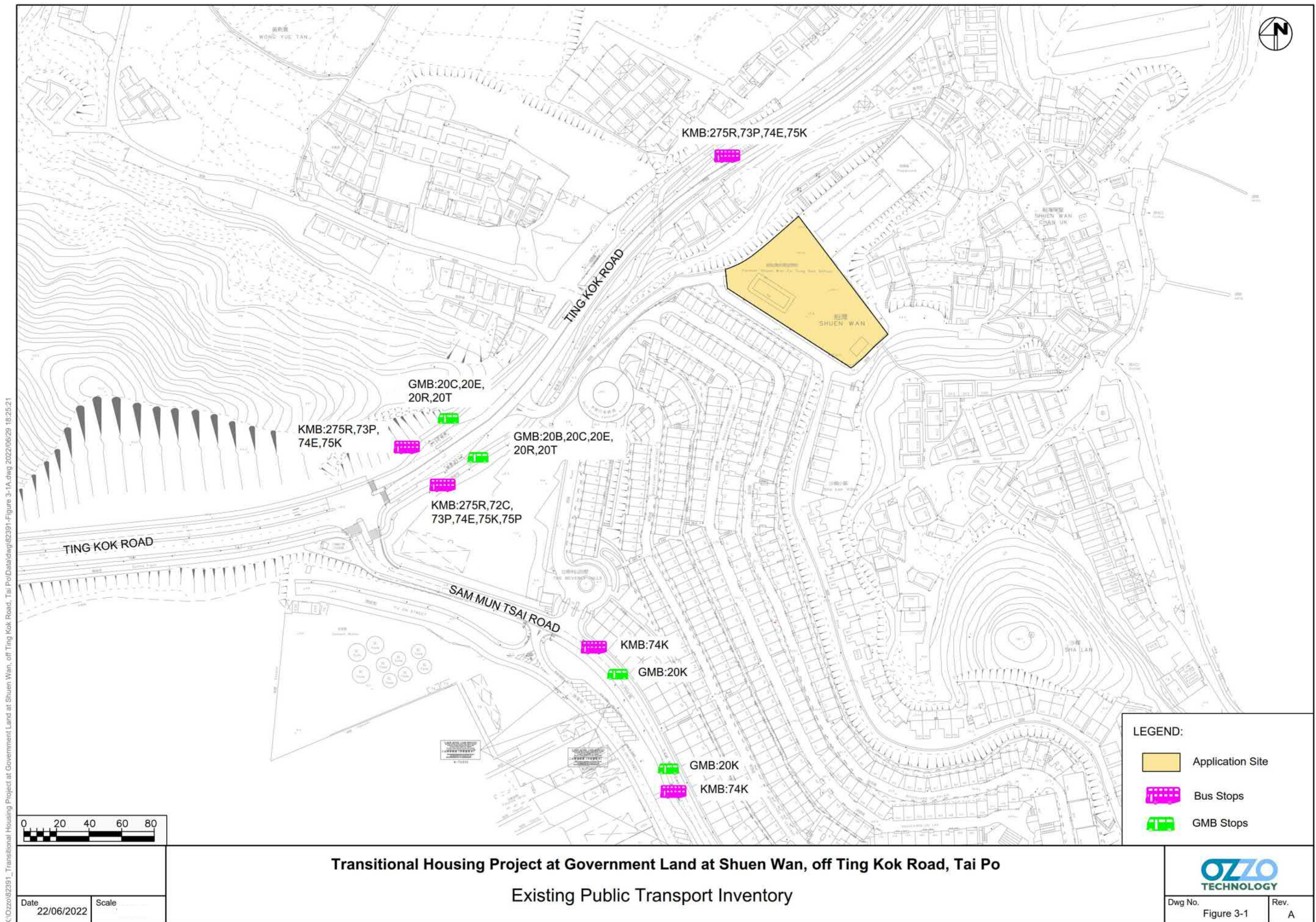
(來源：申請人建議書)
(SOURCE: APPLICANT'S SUBMISSION PLAN)



- = Proposed Development
- = Wind Penetration
- = View Corridors
- = Connecting Walkway
- = Air Flow through Walkway

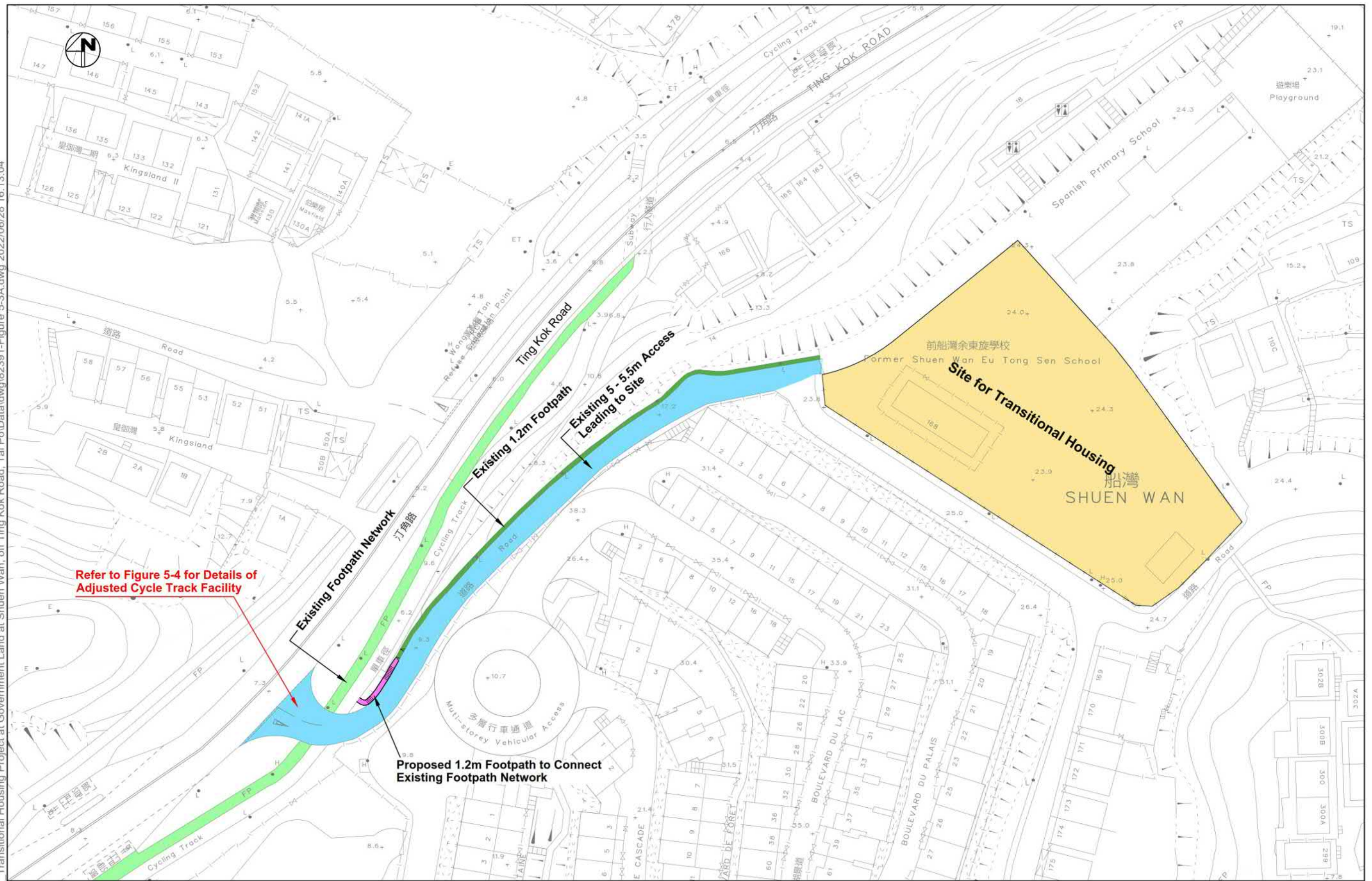
| Figure No. | Title |
|------------|--|
| 5.1 | Wind Penetration and View Corridors within Proposed Design |
| Date | Description |
| 06/2022 | Drawing of Wind Flow and Views through the Site |





X:\Ozzo\82291_Transitional Housing Project at Government Land at Shuen Wan, off Ting Kok Road, Tai Po\Drawings\82291-Figure 3-1A.dwg 2022/06/29 18:25:21

X:\Ozzo\82391 Transitional Housing Project at Government Land at Shuen Wan, off Ting Kok Road, Tai Po\data\dwg\82391-Figure 5-3A.dwg 2022/06/28 16:13:04



Transitional Housing Project at Government Land at Shuen Wan, off Ting Kok Road, Tai Po

Proposed Footpath Connection

Date
28/06/2022

Scale



Drawing No.
Figure 5-3

Rev.
A

參考編號
REFERENCE No. A/NE-TK/753

繪圖 DRAWING A-13

(來源：申請人建議書)
(SOURCE: APPLICANT'S SUBMISSION PLAN)



航攝照片 AERIAL PHOTO

擬議臨時住宿機構 (過渡性房屋) (為期5年)
新界大埔船灣丈量約份第26約的政府土地
PROPOSED TEMPORARY RESIDENTIAL INSTITUTION
(TRANSITIONAL HOUSING) FOR A PERIOD OF 5 YEARS
GOVERNMENT LAND IN D.D. 26,
SHUEN WAN, TAI PO, NEW TERRITORIES

規劃署
PLANNING
DEPARTMENT



參考編號
REFERENCE No.

A/NE-TK/753

圖 PLAN

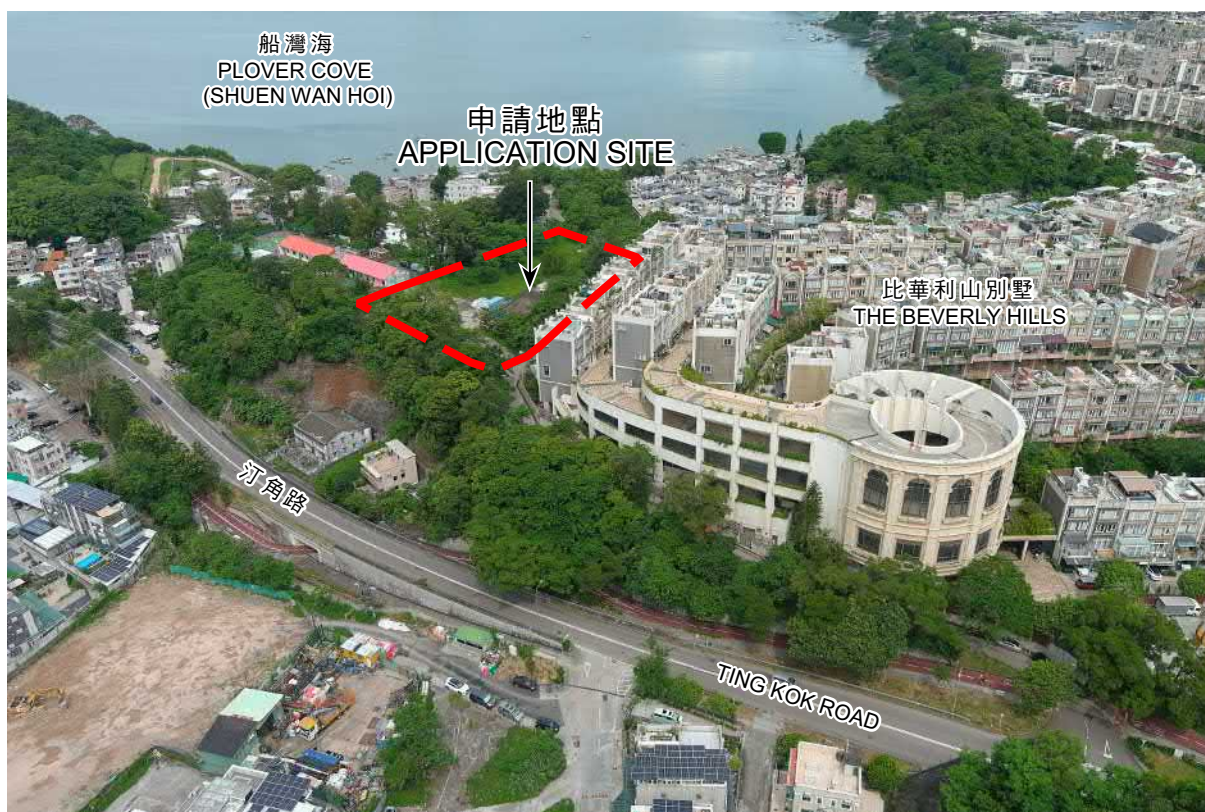
A-3

本摘要圖於2022年7月27日擬備
所根據的資料為地政總署
於2019年1月15日拍得的航攝照片
編號E126907C
EXTRACT PLAN PREPARED ON 27.7.2022
BASED ON AERIAL PHOTO No. E126907C
TAKEN ON 15.1.2021 BY
LANDS DEPARTMENT

1



2



申請地點界線只作識別用
APPLICATION SITE BOUNDARY FOR IDENTIFICATION PURPOSE ONLY

實地照片 SITE PHOTOS

本摘要圖於2022年7月27日擬備，所根據的資料為攝於2022年7月19日的無人駕駛航拍照片
PLAN PREPARED ON 27.7.2022 BASED ON UNMANNED AERIAL VEHICLE PHOTOS TAKEN ON 19.7.2022

擬議臨時住宿機構（過渡性房屋）（為期5年）
新界大埔船灣丈量約份第26約的政府土地
PROPOSED TEMPORARY RESIDENTIAL INSTITUTION (TRANSITIONAL HOUSING) FOR A PERIOD OF 5 YEARS
GOVERNMENT LAND IN D.D. 26, SHUEN WAN, TAI PO, NEW TERRITORIES

規劃署
PLANNING
DEPARTMENT



參考編號
REFERENCE No.
A/NE-TK/753

圖 PLAN
A-4a

3



申請地點界線只作識別用
APPLICATION SITE BOUNDARY FOR IDENTIFICATION PURPOSE ONLY

實地照片 SITE PHOTOS

本摘要圖於2022年7月27日擬備，所根據的資料為攝於2022年7月19日的無人駕駛航拍照片
PLAN PREPARED ON 27.7.2022 BASED ON UNMANNED AERIAL VEHICLE PHOTO TAKEN ON 19.7.2022

擬議臨時住宿機構（過渡性房屋）（為期5年）
新界大埔船灣丈量約份第26約的政府土地
PROPOSED TEMPORARY RESIDENTIAL INSTITUTION
(TRANSITIONAL HOUSING) FOR A PERIOD OF 5 YEARS
GOVERNMENT LAND IN D.D. 26,
SHUEN WAN, TAI PO, NEW TERRITORIES

規劃署
PLANNING
DEPARTMENT



參考編號
REFERENCE No.
A/NE-TK/753

圖 PLAN
A-4b