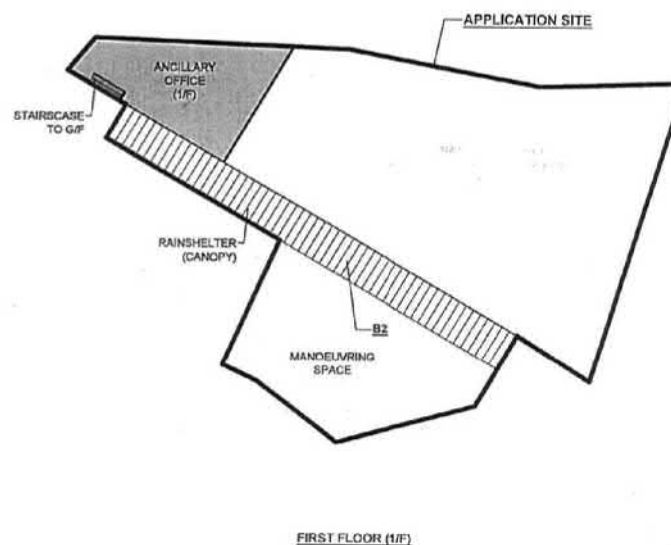
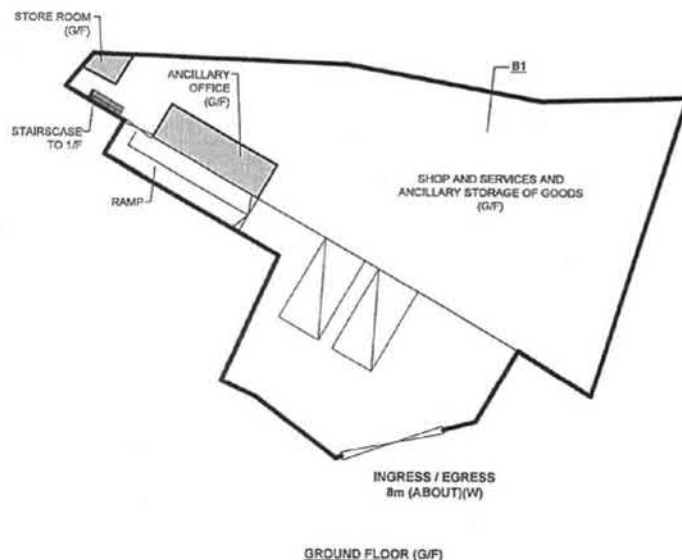


# DEVELOPMENT PARAMETERS

APPLICATION SITE AREA	: 884 m <sup>2</sup>	(ABOUT)
COVERED AREA	: 714 m <sup>2</sup>	(ABOUT)
UNCOVERED AREA	: 170 m <sup>2</sup>	(ABOUT)
PLOT RATIO	: 0.9	(ABOUT)
SITE COVERAGE	: 81 %	(ABOUT)
NO. OF STRUCTURE	: 2	
DOMESTIC GFA	: N/A	
NON-DOMESTIC GFA	: 804 m <sup>2</sup>	(ABOUT)
TOTAL GFA	: 804 m <sup>2</sup>	(ABOUT)
BUILDING HEIGHT	: 8 m - 11 m	(ABOUT)
NO. OF STOREY	: 1 - 2	

STRUCTURE	USE	COVERED AREA	GFA	BUILDING HEIGHT
B1 (G/F)	SHOP AND SERVICES ANCILLARY OFFICE STORE ROOM, STORAGE OF GOODS	609m <sup>2</sup> (ABOUT)	609m <sup>2</sup> (ABOUT)	11m (ABOUT)(2-STOREY)
(1/F)	ANCILLARY OFFICE		90m <sup>2</sup> (ABOUT)	
B2	RAIN SHELTER (CANOPY)	105m <sup>2</sup> (ABOUT)	105m <sup>2</sup> (ABOUT)	8m (ABOUT)(1-STOREY)
TOTAL		714m <sup>2</sup> (ABOUT)	804m <sup>2</sup> (ABOUT)	



## LOADING/UNLOADING PROVISION

NO. OF LOADING/UNLOADING SPACE FOR LGV	: 2
DIMENSION OF PARKING SPACE	: 7 m (L) X 3.5 m (W)
MINIMUM HEADROOM	: 5 m

## LEGEND

[Outline]	APPLICATION SITE
[Hatched]	STRUCTURE (ENCLOSED)
[Diagonal Lines]	STRUCTURE (CANOPY)
[Empty Box]	PARKING SPACE
[Arrow]	INGRESS / EGRESS

PLANNING CONSULTANT	
R-RICHES PROPERTY CONSULTANTS LIMITED	
PROJECT	
TEMPORARY SHOP AND SERVICES WITH ANCILLARY OFFICE FOR A PERIOD OF 3 YEARS	
SITE LOCATION	
LOT 1038 S.B (PART) IN D.D. 130 AND ADJOINING GOVERNMENT LAND, FUK HANG TSUEN, TUEN MUN, NEW TERRITORIES	
SCALE	
1:500 @ A1	
DRAWN BY	DATE
MN	13.6.2022
CHECKED BY	DATE
APPROVED BY	DATE
DRAW TITLE	
LAYOUT PLAN	
DRAWN BY	DATE

參考編號  
REFERENCE No.  
A/TM-LTTY/430

繪圖 DRAWING  
A-1

(摘錄自申請人於17. 6. 2022呈交的申請書)  
(Extract from Applicant's  
Submission of 17.6.2022)

# DEVELOPMENT PARAMETERS

APPLICATION SITE AREA : 714m<sup>2</sup> (ABOUT)  
COVERED AREA : 714m<sup>2</sup> (ABOUT)  
UNCOVERED AREA : NOT APPLICABLE

NO. OF STRUCTRE : 2  
DOMESTIC GFA : N/A  
NON-DOMESTIC GFA : 804m<sup>2</sup> (ABOUT)  
BUILDING HEIGHT : 8m - 11m (ABOUT)  
NO. OF STOREY : 1 - 2

NO. OF L/U/L SPACE FOR LGV : 2 (3.5m X 7m)

## Note:

1. Catchpit (CP2) with desilting facility shall follow CEDD standard drawing No. C24061.

2. Catchpit and UC follows Typical Details of Geotechnical Manual for Slope Fig.8.10 and Fig.8.11 respectively.

3. Adjacent Area has their own stormwater collection system so no outside catchment is involved

## Legend:

- Proposed 225UC (1:100) with cast iron cover
- Existing UPVC
- Proposed Catchpit
- ⊗ Existing Catchpit
- +5.12 Existing Level

## Company:

恒協工程有限公司  
Handship Engineering Company Limited

## Project:

Proposed Temporary Shop and Services with Ancillary Office for a Period of 3 Years at Lot 1038 S.B (Part) in D.D. 130 and Adjoining Government Land, Fuk Hang Tsuen, Tuen Mun, New Territories

## OZP:

Application No. A/TM-LTTY/395

## Zoning:

Residential (Group D)

## Title:

Drainage Proposal-Layout

## Dwg No:

## File:

Fig.2

## Date:

22 Sep 2020

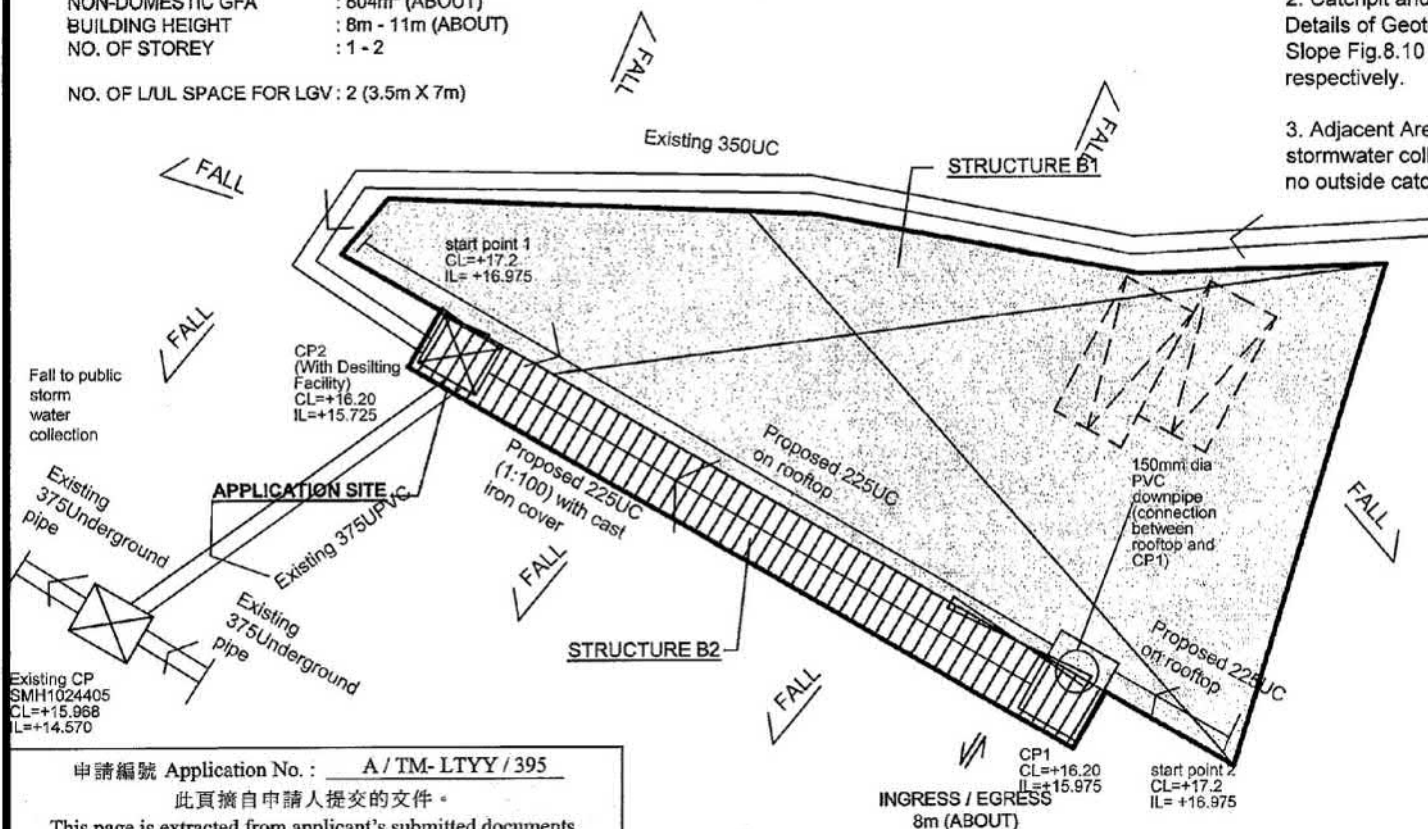
## 參考編號

REFERENCE No. A/TM-LTTY/430

繪圖 DRAWING A-2

(摘錄自申請人於17. 6. 2022呈交的申請書)

(Extract from Applicant's Submission of 17.6.2022)



申請編號 Application No. : A / TM- LTTY / 395

此頁摘自申請人提交的文件。

This page is extracted from applicant's submitted documents.

STRUCTURE	USE	COVERED AREA	GFA	BUILDING HEIGHT
B1	(G/F) SHOP AND SERVICES (METALWARE) LOADING / UNLOADING AREA ANCILLARY OFFICE STORE ROOM ANCILLARY OFFICE	609m <sup>2</sup> (ABOUT)	809m <sup>2</sup> (ABOUT)	11m (ABOUT)(2-STORY)
	(1/F)		90m <sup>2</sup> (ABOUT)	
B2	RAINSHELTER (CANOPY)	105m <sup>2</sup> (ABOUT)	105m <sup>2</sup> (ABOUT)	8m (ABOUT)(1-STORY)
TOTAL		714m <sup>2</sup> (ABOUT)	804m <sup>2</sup> (ABOUT)	

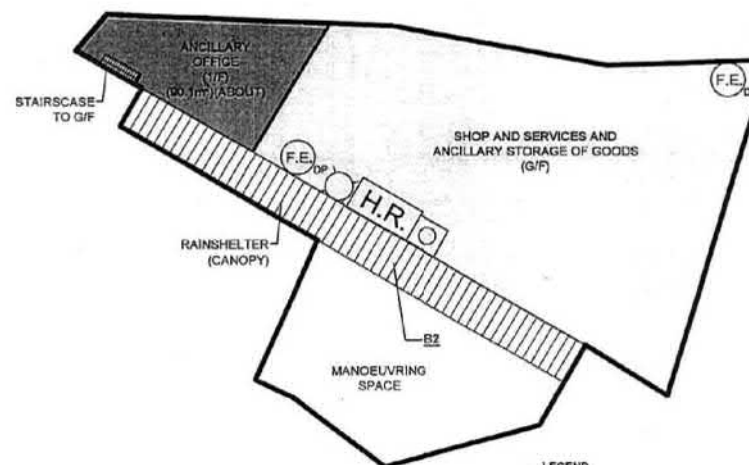
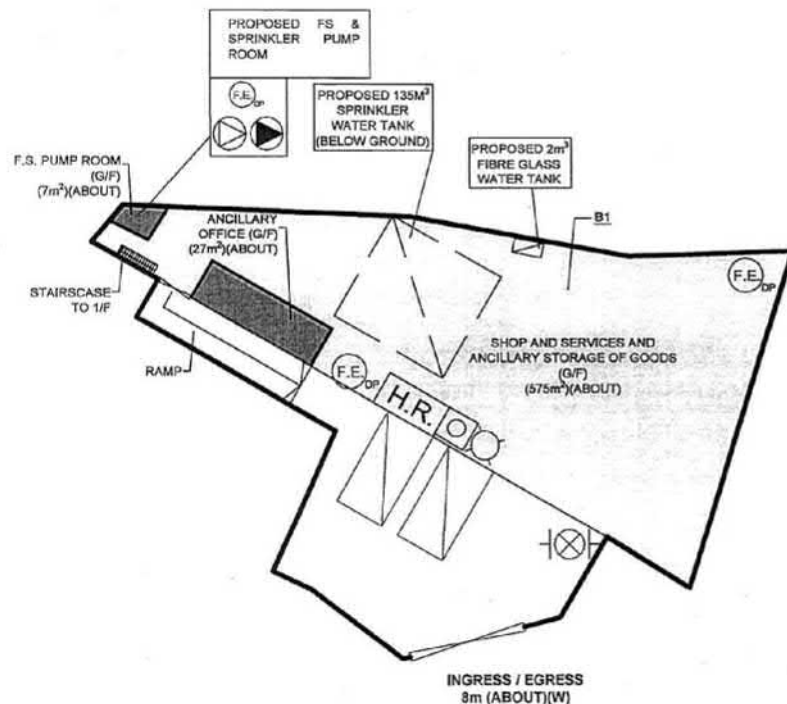
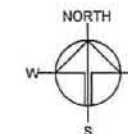
## LEGEND

- ⊗ STRUCTURE (ENCLOSED)
- ▨ STRUCTURE (CANOPY)
- PARKING / L/U/L SPACE

# DEVELOPMENT PARAMETERS

APPLICATION SITE AREA	: 584 m <sup>2</sup>	(ABOUT)
COVERED AREA	: 714 m <sup>2</sup>	(ABOUT)
UNCOVERED AREA	: 170 m <sup>2</sup>	(ABOUT)
PLOT RATIO	: 0.9	(ABOUT)
SITE COVERAGE	: 81 %	(ABOUT)
NO. OF STRUCTURE	: 2	
DOMESTIC GFA	: N/A	
NON-DOMESTIC GFA	: 804 m <sup>2</sup>	(ABOUT)
TOTAL GFA	: 804 m <sup>2</sup>	(ABOUT)
BUILDING HEIGHT	: 8 m - 11 m	(ABOUT)
NO. OF STOREY	: 1 - 2	

STRUCTURE	USE	SQ.M	BUILDING HEIGHT	CU.M
B1	(G/F)	SHOP AND SERVICES ANCILLARY OFFICE STORE ROOM, STORAGE OF GOODS	5.5m (ABOUT)	3349.5m <sup>3</sup> (ABOUT)
	(1/F)	ANCILLARY OFFICE	5.5m (ABOUT)	495m <sup>3</sup> (ABOUT)
B2	RAIN SHELTER (CANOPY)	105m <sup>2</sup> (ABOUT)	8m (ABOUT)(1-STOREY)	840m <sup>3</sup> (ABOUT)



## PUMP SCHEDULE

DESIGNATION	FLOW RATE (Litres/min)	DISCHARGE HEAD (Kpa)	MOTOR RATING (Kw)
SP1, SP2	2250/1350/1100	140/290/320	18.5
SP-JP	60	450	2.2
HR-1, HR-2	100	600	2.2
HR-JP	60	400	2.2

## LEGEND

[Symbol]	APPLICATION SITE
[Symbol]	STRUCTURE (ENCLOSED)
[Symbol]	STRUCTURE (CANOPY)
[Symbol]	PARKING SPACE
[Symbol]	INGRESS / EGRESS
[Symbol]	4 KG DRY POWER TYPE FIRE EXTINGUISHER
[Symbol]	BREAK GLASS UNIT
[Symbol]	VISUAL ALARM DEVICE
[Symbol]	HOSE REEL SET
[Symbol]	SPRINKLER INLET AND SPRINKLER CONTROL VALVE
[Symbol]	HOSE REEL PUMP
[Symbol]	SPRINKLER PUMP

PLANNING CONSULTANT  
R-RICHES PROPERTY CONSULTANTS LIMITED

PROJECT  
TEMPORARY SHOP AND SERVICES WITH ANCILLARY OFFICE FOR A PERIOD OF 3 YEARS

SITE LOCATION  
LOT 1038 S.B (PART) IN D.D. 130 AND ADJOINING GOVERNMENT LAND, FUK HANG TSUEN, TUN MUN, NEW TERRITORIES

SCALE  
1:100

DRAWN BY  
OL

DATE  
14.6.2022

CHECKED BY

DATE

APPROVED BY

DATE

DWG. TITLE  
FSIs PROPOSAL (2/2)

APPENDIX III

001

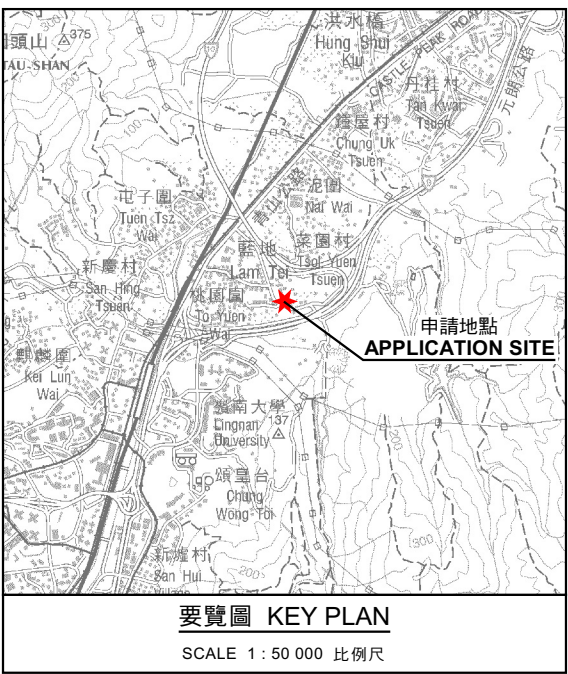
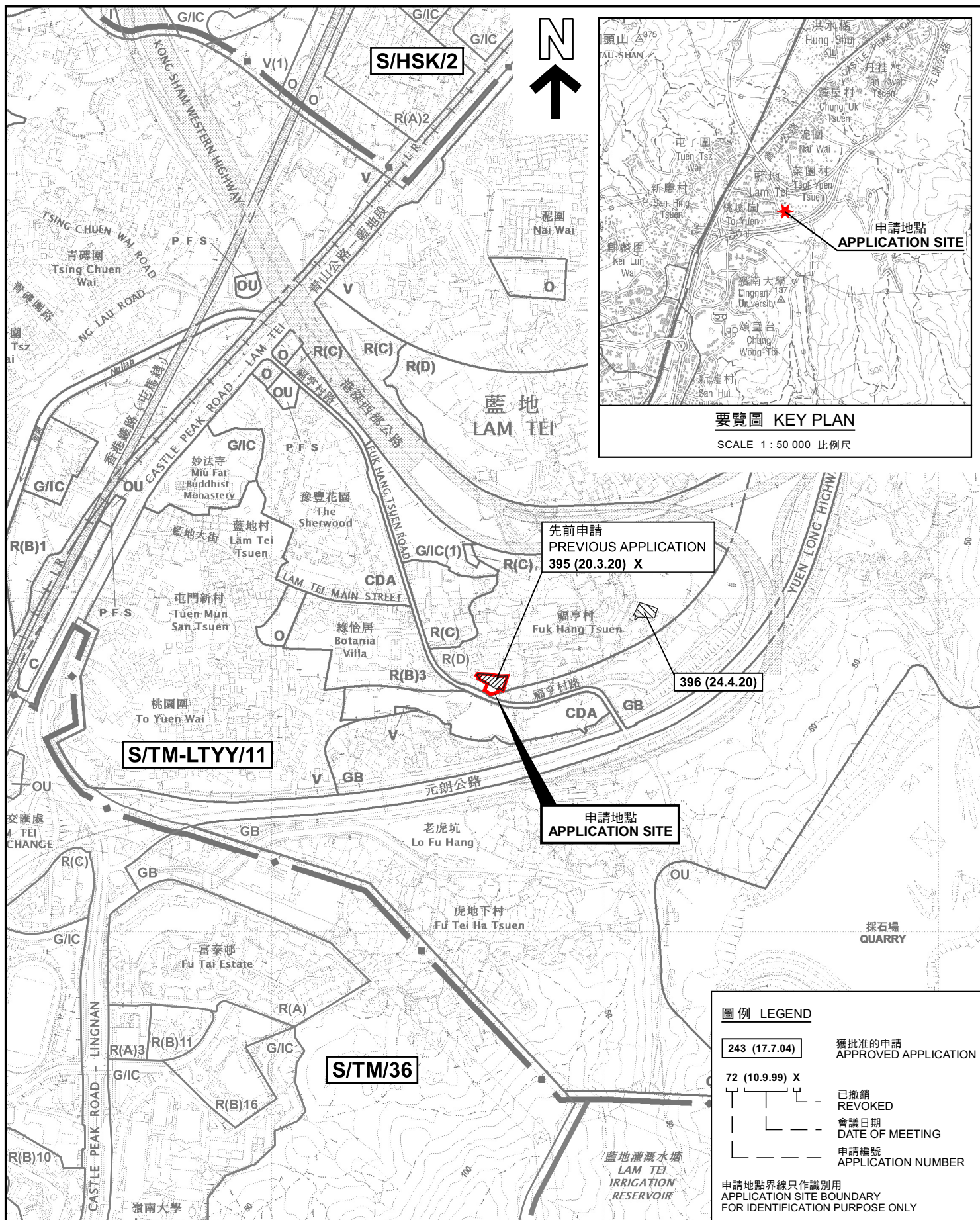
參考編號  
REFERENCE No.  
A/TM-LTTY/430

繪圖 DRAWING  
A-3

(摘錄自申請人於17. 6. 2022呈交的申請書)

(Extract from Applicant's  
Submission of 17.6.2022)

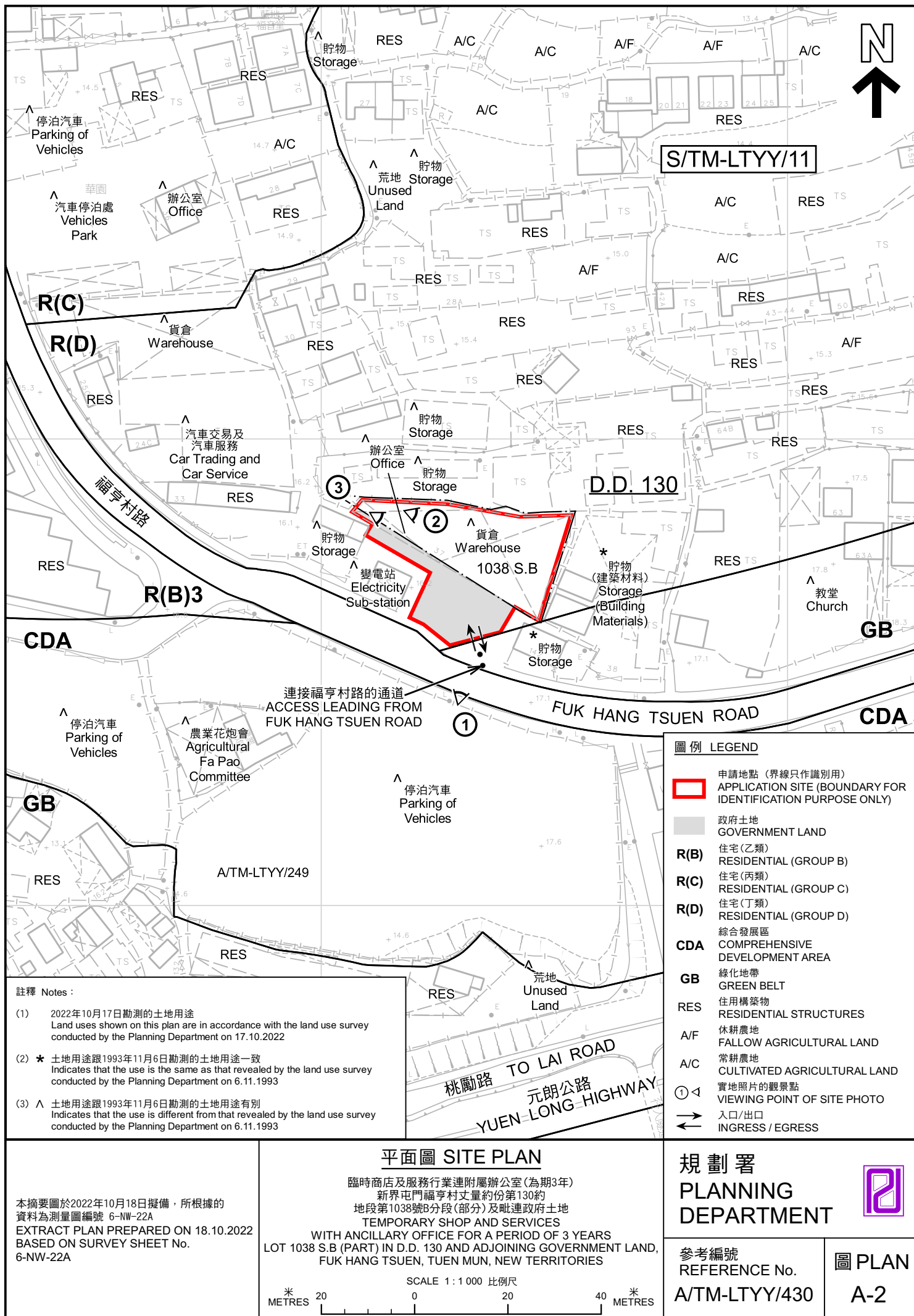




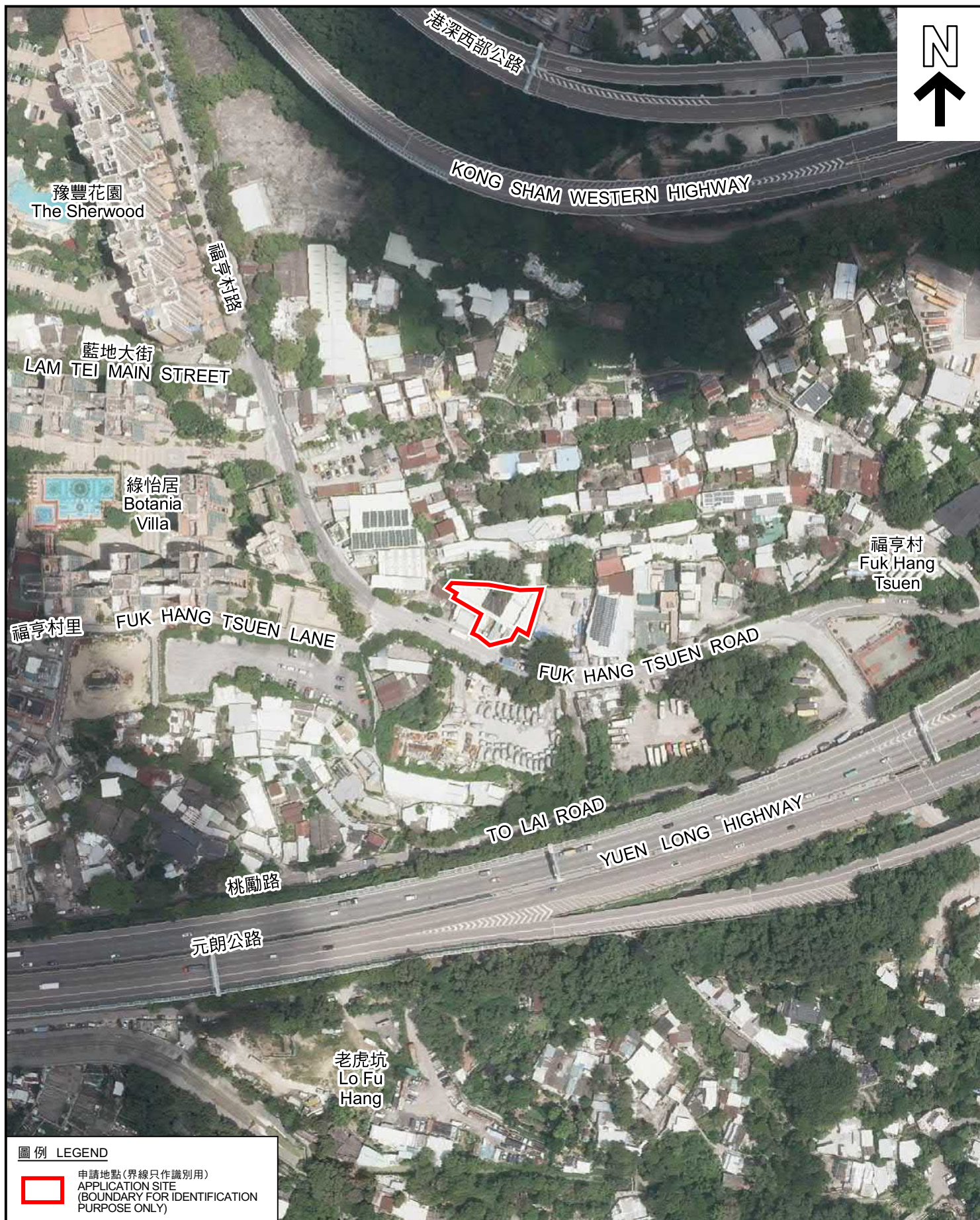
圖例 LEGEND	
	243 (17.7.04) 獲批准的申請 APPROVED APPLICATION
	72 (10.9.99) X 已撤銷 REVOKED
	會議日期 DATE OF MEETING
	申請編號 APPLICATION NUMBER
申請地點界線只作識別用 APPLICATION SITE BOUNDARY FOR IDENTIFICATION PURPOSE ONLY	

<p>本摘要圖於2022年10月18日擬備，所根據的資料為於2021年8月20日展示的分區計劃大綱圖編號 S/TM-LTTY/11 EXTRACT PLAN PREPARED ON 18.10.2022 BASED ON OUTLINE ZONING PLAN No. S/TM-LTTY/11 EXHIBITED ON 20.8.2021</p>	<p><b>位置圖 LOCATION PLAN</b>          臨時商店及服務行業連附屬辦公室(為期3年)          新界屯門福亨村丈量約份第130約地段第1038號B分段(部分)及毗連政府土地          TEMPORARY SHOP AND SERVICES          WITH ANCILLARY OFFICE FOR A PERIOD OF 3 YEARS          LOT 1038 S.B (PART) IN D.D. 130 AND ADJOINING GOVERNMENT LAND, FUK HANG TSUEN, TUEN MUN, NEW TERRITORIES          SCALE 1:7 500 比例尺</p>	<p><b>規劃署 PLANNING DEPARTMENT</b></p>	
		<p>參考編號 REFERENCE No. A/TM-LTTY/430</p>	<p>圖 PLAN A-1</p>









圖例 LEGEND



申請地點 (界線只作識別用)  
APPLICATION SITE  
(BOUNDARY FOR IDENTIFICATION  
PURPOSE ONLY)

本摘要圖於2022年10月18日擬備，所根據的資料為地政總署於2021年8月22日拍得的航攝照片編號 E140591C  
EXTRACT PLAN PREPARED ON 18.10.2022  
BASED ON AERIAL PHOTO No.  
E140591C TAKEN ON 22.8.2021 BY  
LANDS DEPARTMENT

航攝照片 AERIAL PHOTO

臨時商店及服務行業連附屬辦公室 (為期3年)  
新界屯門福亨村丈量約份第130約  
地段第1038號B分段 (部分) 及毗連政府土地  
TEMPORARY SHOP AND SERVICES  
WITH ANCILLARY OFFICE FOR A PERIOD OF 3 YEARS  
LOT 1038 S.B (PART) IN D.D. 130 AND ADJOINING GOVERNMENT LAND,  
FUK HANG TSUEN, TUEN MUN, NEW TERRITORIES

規劃署  
PLANNING  
DEPARTMENT



參考編號  
REFERENCE No.  
A/TM-LTYY/430

圖 PLAN  
A-3





申請地點界線只作識別用 APPLICATION SITE BOUNDARY FOR IDENTIFICATION PURPOSE ONLY

## 實地照片 SITE PHOTOS

本圖於2022年10月18日擬備，所根據的資料為攝於2022年10月17日的實地照片  
PLAN PREPARED ON 18.10.2022  
BASED ON SITE PHOTOS  
TAKEN ON 17.10.2022

臨時商店及服務行業連附屬辦公室(為期3年)  
新界屯門福亨村丈量約份第130約  
地段第1038號B分段(部分)及毗連政府土地  
TEMPORARY SHOP AND SERVICES  
WITH ANCILLARY OFFICE FOR A PERIOD OF 3 YEARS  
LOT 1038 S.B (PART) IN D.D. 130 AND ADJOINING GOVERNMENT LAND,  
FUK HANG TSUEN, TUEN MUN, NEW TERRITORIES

規劃署  
PLANNING  
DEPARTMENT



參考編號  
REFERENCE No.  
A/TM-LTYT/430

圖 PLAN  
A-4