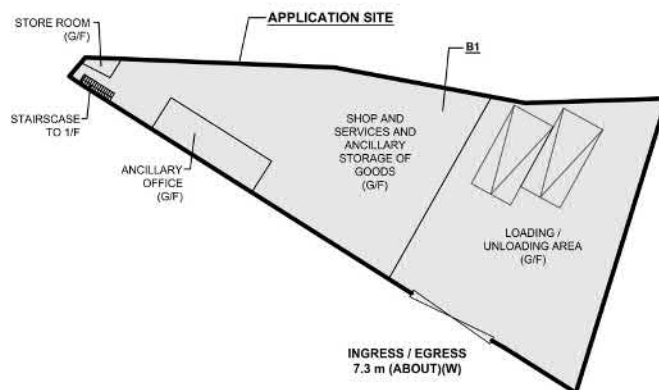
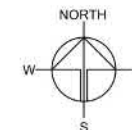
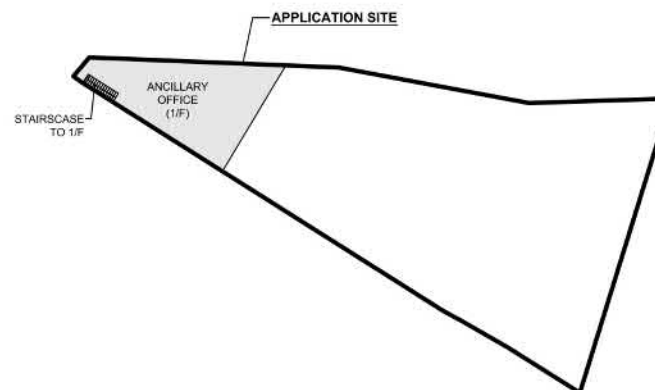


## DEVELOPMENT PARAMETERS

APPLICATION SITE AREA	: 581 m <sup>2</sup>	(ABOUT)
COVERED AREA	: 581 m <sup>2</sup>	(ABOUT)
UNCOVERED AREA	: NOT APPLICABLE	
PLOT RATIO	: 1:1	(ABOUT)
SITE COVERAGE	: 100 %	(ABOUT)
NO. OF STRUCTURE	: 1	
DOMESTIC GFA	: N/A	
NON-DOMESTIC GFA	: 660 m <sup>2</sup>	(ABOUT)
TOTAL GFA	: 660 m <sup>2</sup>	(ABOUT)
BUILDING HEIGHT	: 11 m	(ABOUT)
NO. OF STOREY	: 2	

STRUCTURE	USE	COVERED AREA	GROSS FLOOR AREA	BUILDING HEIGHT
B1 (G/F)	SHOP AND SERVICES ANCILLARY OFFICE STORE ROOM, STORAGE OF GOODS	581 m <sup>2</sup> (ABOUT)	581 m <sup>2</sup> (ABOUT)	11m (ABOUT)(2-STOREY)
(1/F)	ANCILLARY OFFICE		79m <sup>2</sup> (ABOUT)	
TOTAL		581 m <sup>2</sup> (ABOUT)	660 m <sup>2</sup> (ABOUT)	

GROUND FLOOR OF  
STRUCTURE B1FIRST FLOOR OF  
STRUCTURE B1

## LOADING/UNLOADING PROVISION

NO. OF LOADING/UNLOADING SPACE FOR LGV	: 2
DIMENSION OF PARKING SPACE	: 7 m (L) X 3.5 m (W)
MINIMUM HEADROOM	: 5 m

## LEGEND

	APPLICATION SITE
	STRUCTURE (ENCLOSED)
	L/U SPACE
	INGRESS / EGRESS

PLANNING CONSULTANT



PROJECT

TEMPORARY SHOP AND  
SERVICES WITH ANCILLARY  
OFFICE FOR A PERIOD OF 3  
YEARS

SITE LOCATION:

LOT 1036 S.B (PART) IN D.D. 130,  
FUK HANG TSUEN, TUEN MUN,  
NEW TERRITORIES

SCALE

1:500 @ A4

DRAWN BY

MN

DATE

12.9.2024

CHECKED BY

DATE

APPROVED BY

DATE

Dwg TITLE

LAYOUT PLAN

Dwg NO.

PLAN 4

VER.

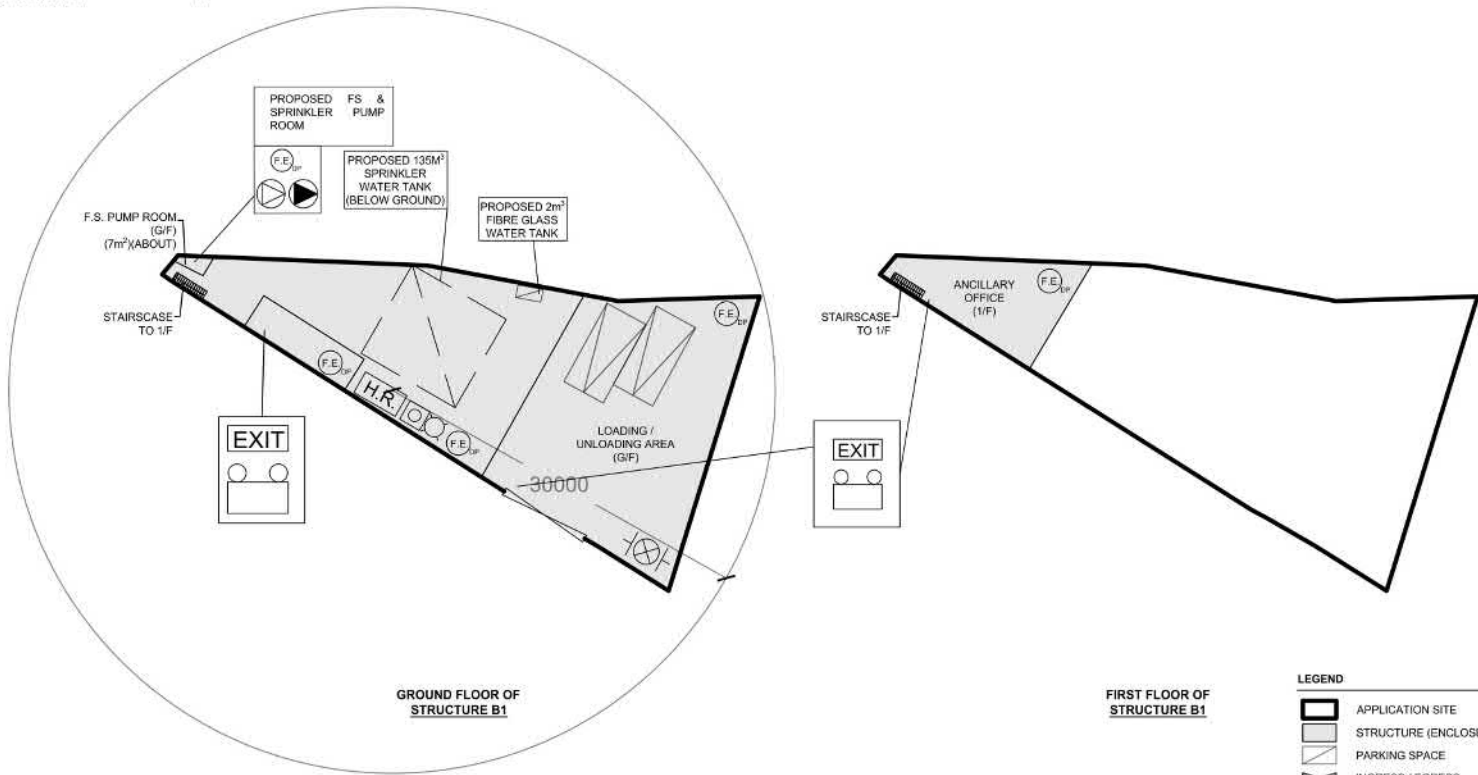
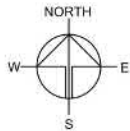
001

參考編號  
REFERENCE No.  
A/TM-LTTY/481繪圖 DRAWING  
A-1(摘錄自申請人於25. 9. 2024呈交的申請書)  
(Extract from Applicant's  
Submission of 25.9.2024)

DEVELOPMENT PARAMETERS

APPLICATION SITE AREA	: 581 m <sup>2</sup>	(ABOUT)
COVERED AREA	: 581 m <sup>2</sup>	(ABOUT)
UNCOVERED AREA	: NOT APPLICABLE	
PLOT RATIO	: 1.1	(ABOUT)
SITE COVERAGE	: 100 %	(ABOUT)
NO. OF STRUCTURE	: 1	
DOMESTIC GFA	: N/A	
NON-DOMESTIC GFA	: 660 m <sup>2</sup>	(ABOUT)
TOTAL GFA	: 660 m <sup>2</sup>	(ABOUT)
BUILDING HEIGHT	: 11 m	(ABOUT)
NO. OF STOREY	: 2	

STRUCTURE	USE	COVERED AREA	GROSS FLOOR AREA	BUILDING HEIGHT
B1 (G/F)	SHOP AND SERVICES ANCILLARY OFFICE STORE ROOM, STORAGE OF GOODS	581 m <sup>2</sup> (ABOUT)	581 m <sup>2</sup> (ABOUT)	11m (ABOUT)(2-STOREY)
(1/F)	ANCILLARY OFFICE		79m <sup>2</sup> (ABOUT)	
TOTAL		581 m <sup>2</sup> (ABOUT)	660 m <sup>2</sup> (ABOUT)	



GROUND FLOOR OF  
STRUCTURE B1

FIRST FLOOR OF  
STRUCTURE B1

PUMP SCHEDULE

DESIGNATION	FLOW RATE (Litre/min)	DISCHARGE HEAD (Kpa)	MOTOR ROTING (Kw)
SP1 , SP2	2250/1350/1100	140/290/320	18.5
SP-JP	60	450	2.2
HR-1,HR-2	100	600	2.2
HR-JP	60	400	2.2

LEGEND

	APPLICATION SITE
	STRUCTURE (ENCLOSED)
	PARKING SPACE
	INGRESS / EGRESS
	4 KG DRY POWER TYPE FIRE EXTINGUISHER
	BREAK GLASS UNIT
	VISUAL ALARM DEVICE
	HOSE REEL SET
	SPRINKLER INLET AND SPRINKLER CONTROL VALVE
	HOSE REEL PUMP
	SPRINKLER PUMP
	EXIT SIGN
	EMERGENCY LIGHTING

PROJECT

TEMPORARY SHOP AND SERVICES WITH ANCILLARY OFFICE FOR A PERIOD OF 3 YEARS

SITE LOCATION

LOT 1036 S.B (PART) IN D.D. 130, FUK HANG TSUEN, TUEN MUN, NEW TERRITORIES

SCALE

1:500 @ A4

DRAWN BY

MN

CHECKED BY

APPROVED BY

DWG TITLE

FSIs PROPOSAL (2/2)

DWG NO.

APPENDIX I

VER.

001

DATE

12.9.2024

DATE

參考編號  
REFERENCE No.  
A/TM-LTTY/481

繪圖 DRAWING  
A-2

(摘錄自申請人於 25. 9. 2024 呈交的申請書)  
(Extract from Applicant's  
Submission of 25.9.2024)

# DEVELOPMENT PARAMETERS

APPLICATION SITE AREA : 714m<sup>2</sup> (ABOUT)  
COVERED AREA : 714m<sup>2</sup> (ABOUT)  
UNCOVERED AREA : NOT APPLICABLE

NO. OF STRUCTRE : 2  
DOMESTIC GFA : N/A  
NON-DOMESTIC GFA : 804m<sup>2</sup> (ABOUT)  
BUILDING HEIGHT : 8m - 11m (ABOUT)  
NO. OF STOREY : 1 - 2

NO. OF L/U/L SPACE FOR LGV : 2 (3.5m X 7m)

## Note:

1. Catchpit (CP2) with desilting facility shall follow CEDD standard drawing No. C2406I.

2. Catchpit and UC follows Typical Details of Geotechnical Manual for Slope Fig.8.10 and Fig.8.11 respectively.

3. Adjacent Area has their own stormwater collection system so no outside catchment is involved

Legend:  
→ Proposed 225UC (1:100) with cast iron cover  
→ Existing UPVC  
□ Proposed Catchpit  
☒ Existing Catchpit  
⊕<sup>11.12</sup> Existing Level

## Company:

恆協工程有限公司  
Handship Engineering Company Limited

## Project:

Proposed Temporary Shop and Services with Ancillary Office for a Period of 3 Years at Lot 1038 S.B (Part) in D.D. 130 and Adjoining Government Land, Fuk Hang Tsuen, Tuen Mun, New Territories

## OZP:

Application No. A/TM-LTTY/395

## Zoning:

Residential (Group D)

## Title:

Drainage Proposal-Layout

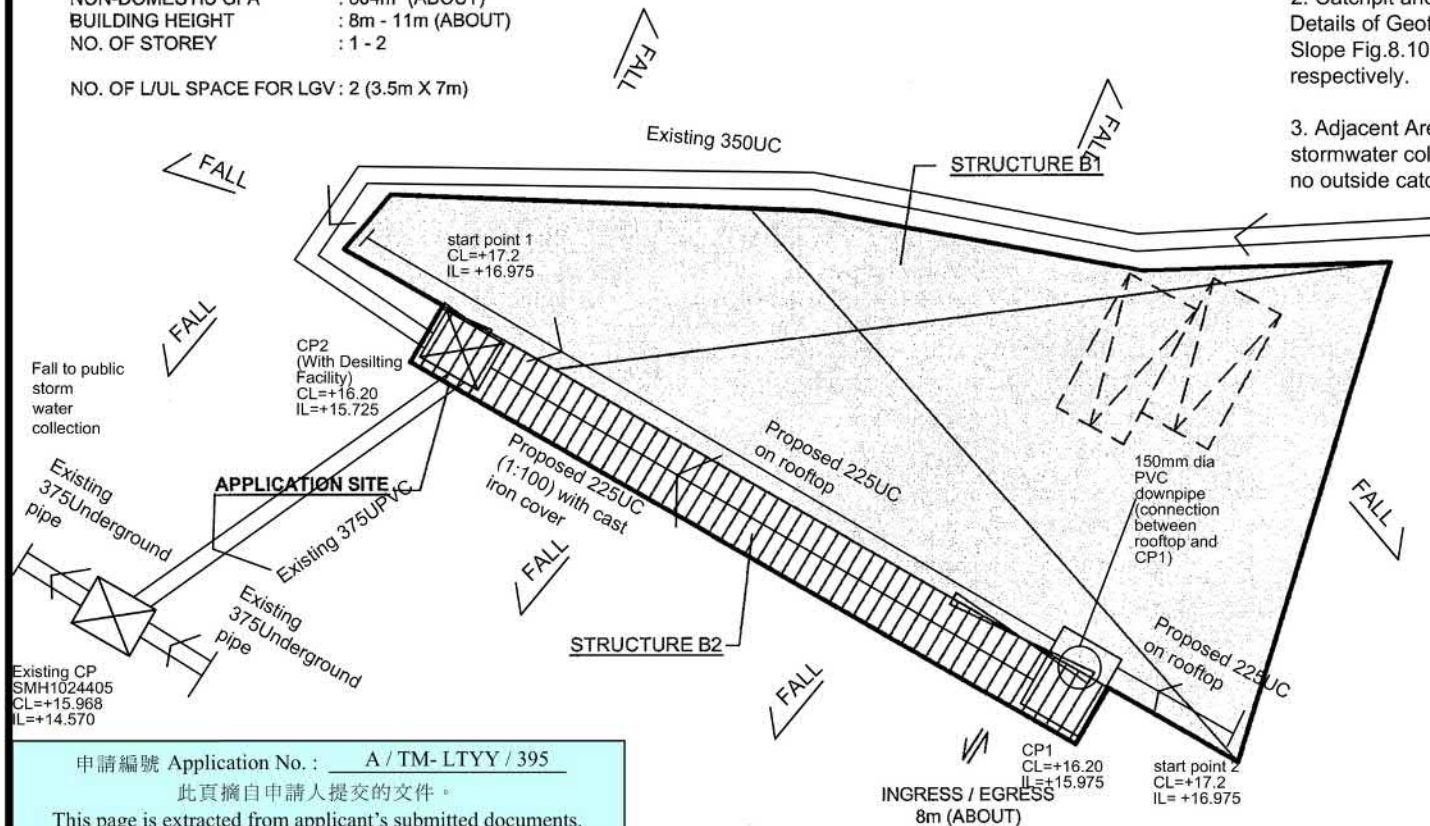
## Dwg No:

File:

Fig.2

## Date:

22 Sep 2020



申請編號 Application No. : A / TM- LTTY / 395

此頁摘自申請人提交的文件。

This page is extracted from applicant's submitted documents.

STRUCTURE	USE	COVERED AREA	GFA	BUILDING HEIGHT
B1 (G/F)	SHOP AND SERVICES (METALWARE)	809m <sup>2</sup> (ABOUT)	809m <sup>2</sup> (ABOUT)	11m (ABOUT)(2-STOREY)
(1/F)	LOADING / UNLOADING AREA ANCILLARY OFFICE STORE ROOM ANCILLARY OFFICE		90m <sup>2</sup> (ABOUT)	
B2	RAINSHELTER (CANOPY)	105m <sup>2</sup> (ABOUT)	105m <sup>2</sup> (ABOUT)	8m (ABOUT)(1-STOREY)
TOTAL		714m <sup>2</sup> (ABOUT)	804m <sup>2</sup> (ABOUT)	

## LEGEND

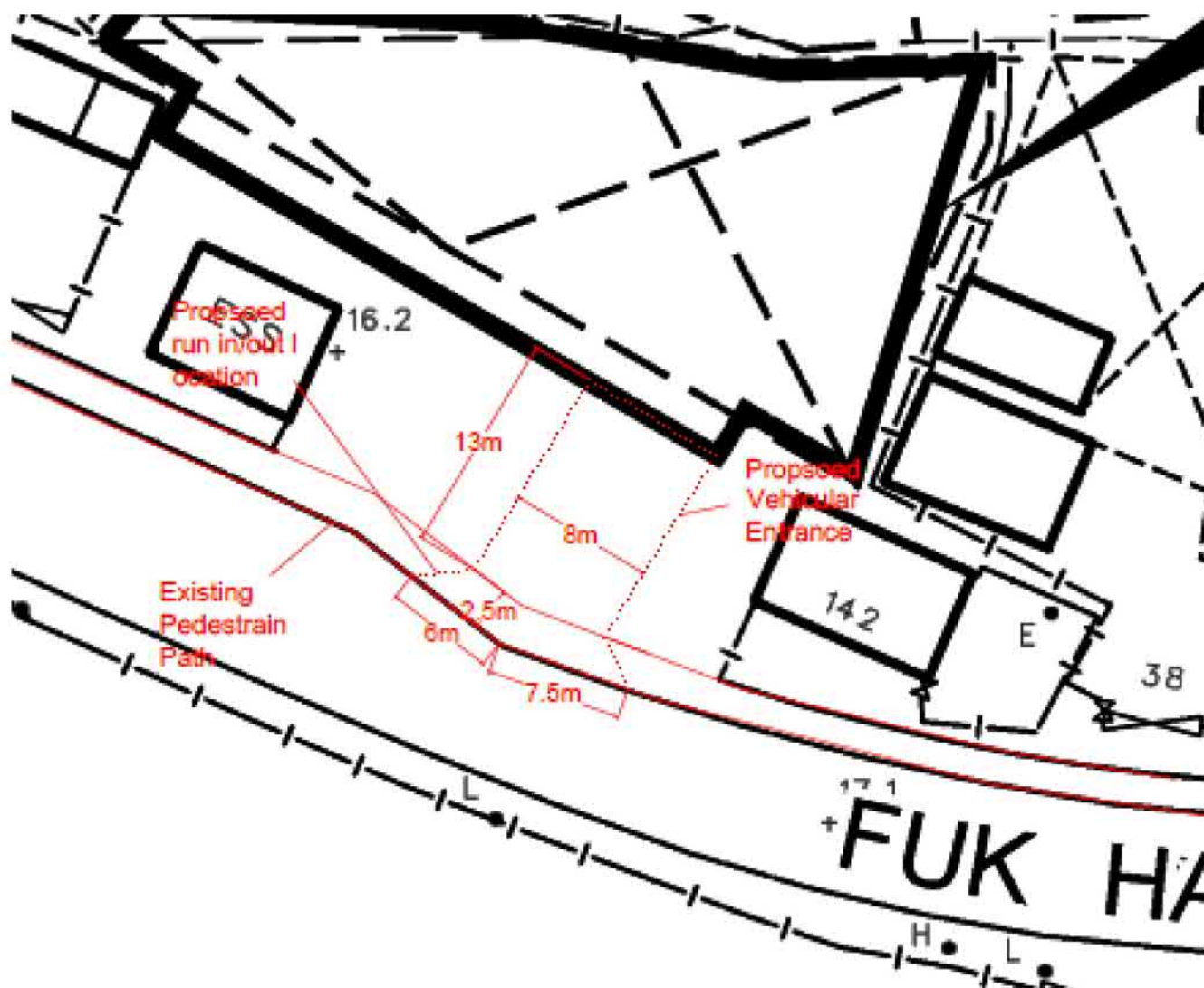
☒ STRUCTURE (ENCLOSED)  
▨ STRUCTURE (CANOPY)  
→ PARKING / L/U/L SPACE

參考編號  
REFERENCE No.  
A/TM-LTTY/481

繪圖 DRAWING  
A-3

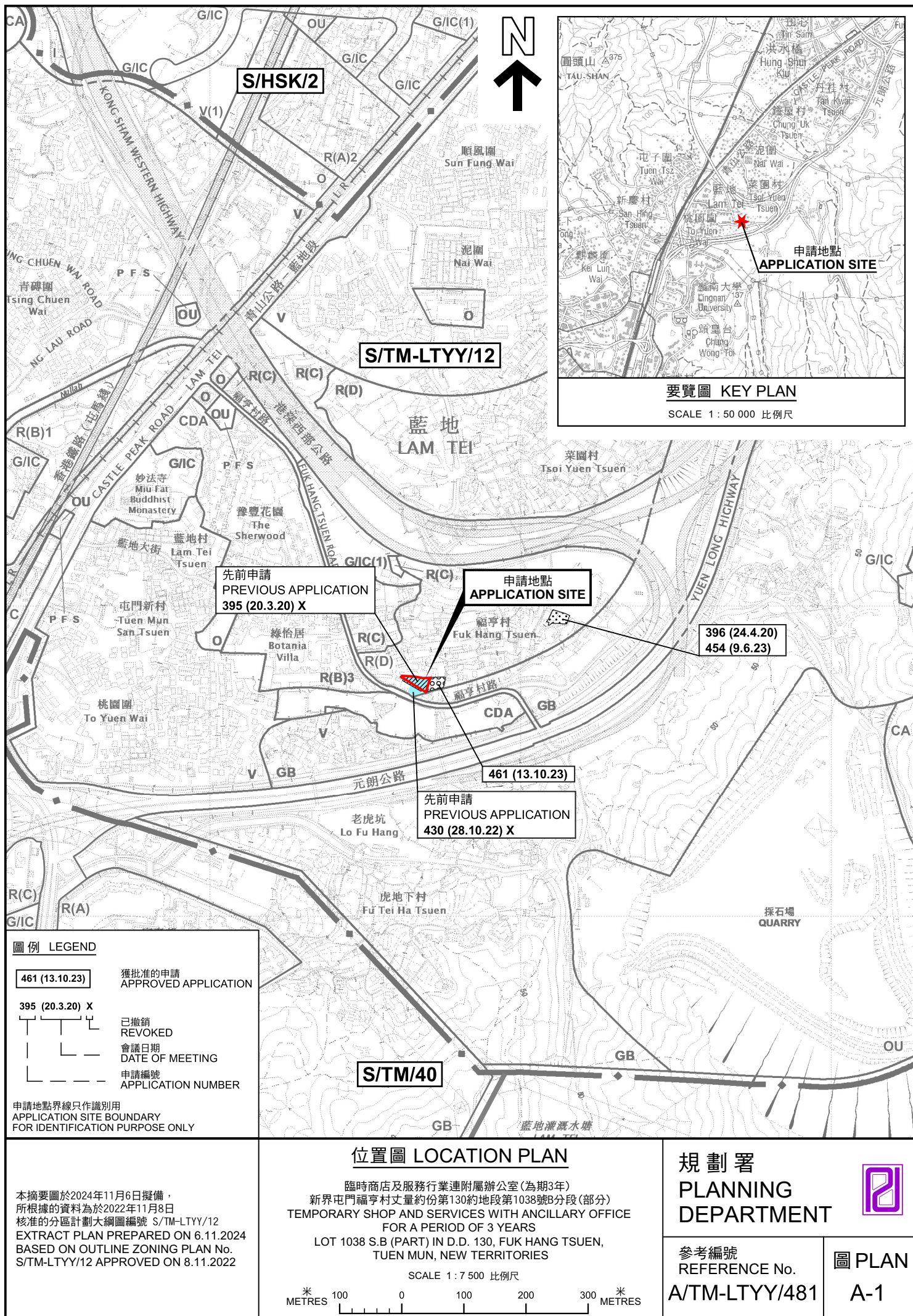
(摘錄自申請人於25. 9. 2024呈交的申請書)  
(Extract from Applicant's  
Submission of 25.9.2024)

## Appendix 1



Location Plan

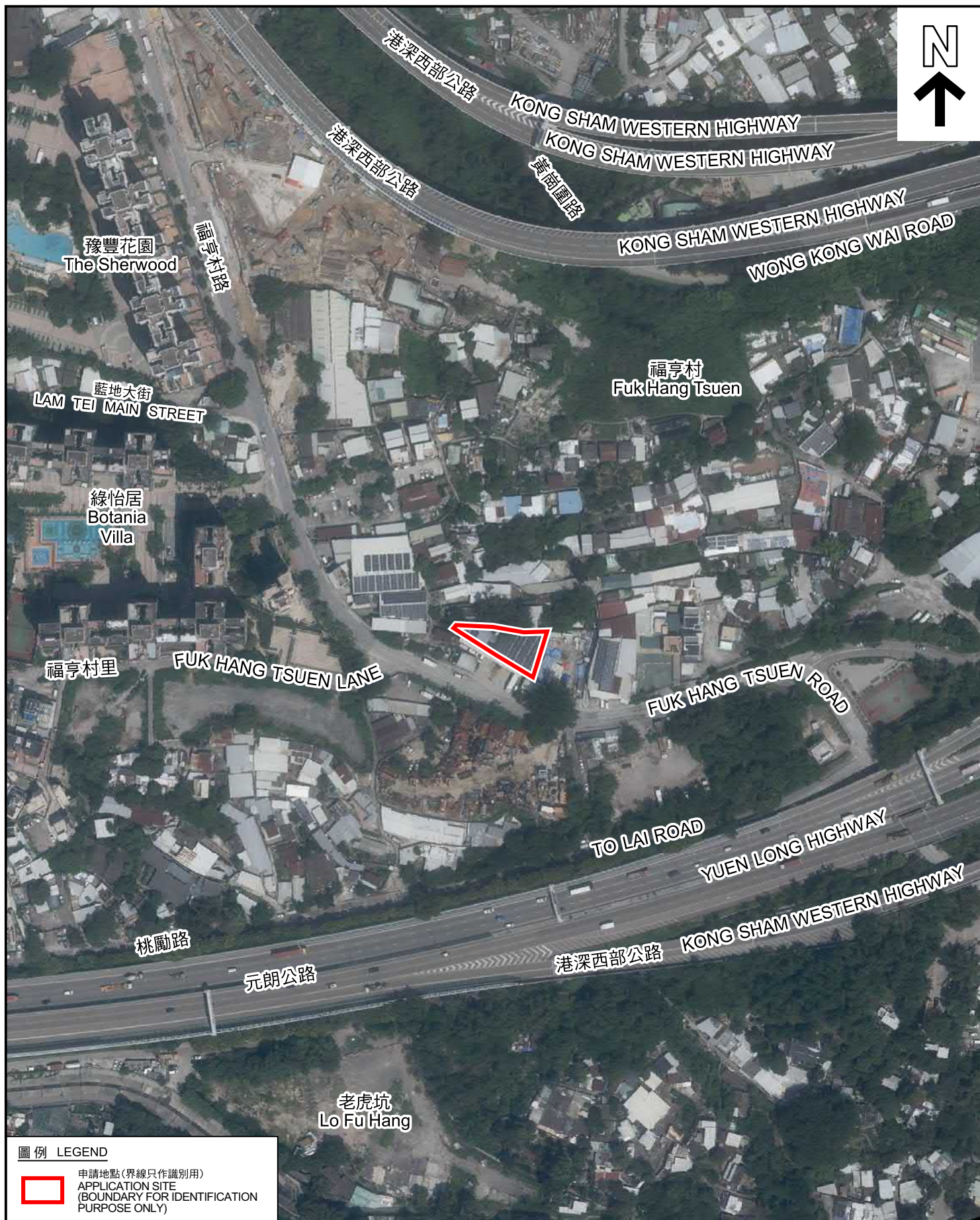












圖例 LEGEND



申請地點(界線只作識別用)  
APPLICATION SITE  
(BOUNDARY FOR IDENTIFICATION  
PURPOSE ONLY)

本摘要圖於2024年10月31日擬備，所根據的資料為地政總署於2023年9月20日拍得的航攝照片編號 E207158C  
EXTRACT PLAN PREPARED ON 31.10.2024  
BASED ON AERIAL PHOTO No.  
E207158C TAKEN ON 20.9.2023  
BY LANDS DEPARTMENT

航攝照片 AERIAL PHOTO

臨時商店及服務行業連附屬辦公室(為期3年)  
新界屯門福亨村丈量約份第130約地段第1038號B分段(部分)  
TEMPORARY SHOP AND SERVICES WITH ANCILLARY OFFICE  
FOR A PERIOD OF 3 YEARS  
LOT 1038 S.B (PART) IN D.D. 130, FUK HANG TSUEN,  
TUEN MUN, NEW TERRITORIES

規劃署  
PLANNING  
DEPARTMENT



參考編號  
REFERENCE No.  
A/TM-LTYT/481

圖 PLAN  
A-3





### 實地照片 SITE PHOTOS

臨時商店及服務行業連附屬辦公室(為期3年)  
新界屯門福亨村丈量約份第130約地段第1038號B分段(部分)  
TEMPORARY SHOP AND SERVICES WITH ANCILLARY OFFICE  
FOR A PERIOD OF 3 YEARS  
LOT 1038 S.B (PART) IN D.D. 130, FUK HANG TSUEN,  
TUEN MUN, NEW TERRITORIES

規劃署  
PLANNING  
DEPARTMENT



參考編號  
REFERENCE No.  
A/TM-LTYT/481

圖 PLAN  
A-4

本圖於2024年11月5日擬備，所根據的  
資料為攝於2024年10月10日的實地照片  
PLAN PREPARED ON 5.11.2024  
BASED ON SITE PHOTOS  
TAKEN ON 10.10.2024