

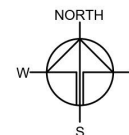
| | | |
|-----------------------|------------------------|---------|
| APPLICATION SITE AREA | : 3,963 m ² | (ABOUT) |
| COVERED AREA | : 1,197 m ² | (ABOUT) |
| UNCOVERED AREA | : 2,766 m ² | (ABOUT) |
| | | |
| PLOT RATIO | : 0.30 | (ABOUT) |
| SITE COVERAGE | : 30 % | (ABOUT) |

| | | |
|------------------|------------------------|---------|
| NO. OF STRUCTURE | : 6 | |
| DOMESTIC GFA | : NOT APPLICABLE | |
| NON-DOMESTIC GFA | : 1,197 m ² | (ABOUT) |
| TOTAL GFA | : 1,197 m ² | (ABOUT) |

BUILDING HEIGHT : 3.5 - 10 m (ABOUT)
NO. OF STOREY : 1

| STRUCTURE | USE | COVERED AREA | GFA | BUILDING HEIGHT |
|-----------|---|------------------------------|------------------------------|-------------------------|
| B1 | SHOP AND SERVICES (VEHICLE SHOWROOM), RECEPTION, WASHROOM | 220 m ² (ABOUT) | 220 m ² (ABOUT) | 10 m (ABOUT)(1-STOREY) |
| B2 | SHOP AND SERVICES (VEHICLE SHOWROOM), | 220 m ² (ABOUT) | 220 m ² (ABOUT) | 10 m (ABOUT)(1-STOREY) |
| B3 | SHOP AND SERVICES (VEHICLE SHOWROOM) | 110 m ² (ABOUT) | 110 m ² (ABOUT) | 10 m (ABOUT)(1-STOREY) |
| B4 | SHOP AND SERVICES (VEHICLE SHOWROOM) | 220 m ² (ABOUT) | 220 m ² (ABOUT) | 10 m (ABOUT)(1-STOREY) |
| B5 | SHOP AND SERVICES (VEHICLE SHOWROOM) | 220 m ² (ABOUT) | 220 m ² (ABOUT) | 10 m (ABOUT)(1-STOREY) |
| B6* | SITE OFFICE AND WASHROOM | 207 m ² (ABOUT) | 207 m ² (ABOUT) | 3.5 m (ABOUT)(1-STOREY) |
| TOTAL | | 1,197 m ² (ABOUT) | 1,197 m ² (ABOUT) | |

*STRUCTURE B6 IS AN EXISTING STRUCTURE, WHILE STRUCTURES B1 TO B5 ARE PROPOSED STRUCTURES.



PROJECT

PROPOSED TEMPORARY SHOP
AND SERVICES WITH
ANCILLARY FACILITIES FOR A
PERIOD OF 5 YEARS

SITE LOCATION

VARIOUS LOTS IN D.D. 104 AND
ADJOINING GOVERNMENT
LAND, LONG HA, NEW
TERRITORIES

SCALE

~~4-800-66-A4~~

| | |
|----------|-----------|
| DRAWN BY | DATE |
| MM | 16.5.2024 |

| | |
|------------|------|
| REVISED BY | DATE |
|------------|------|

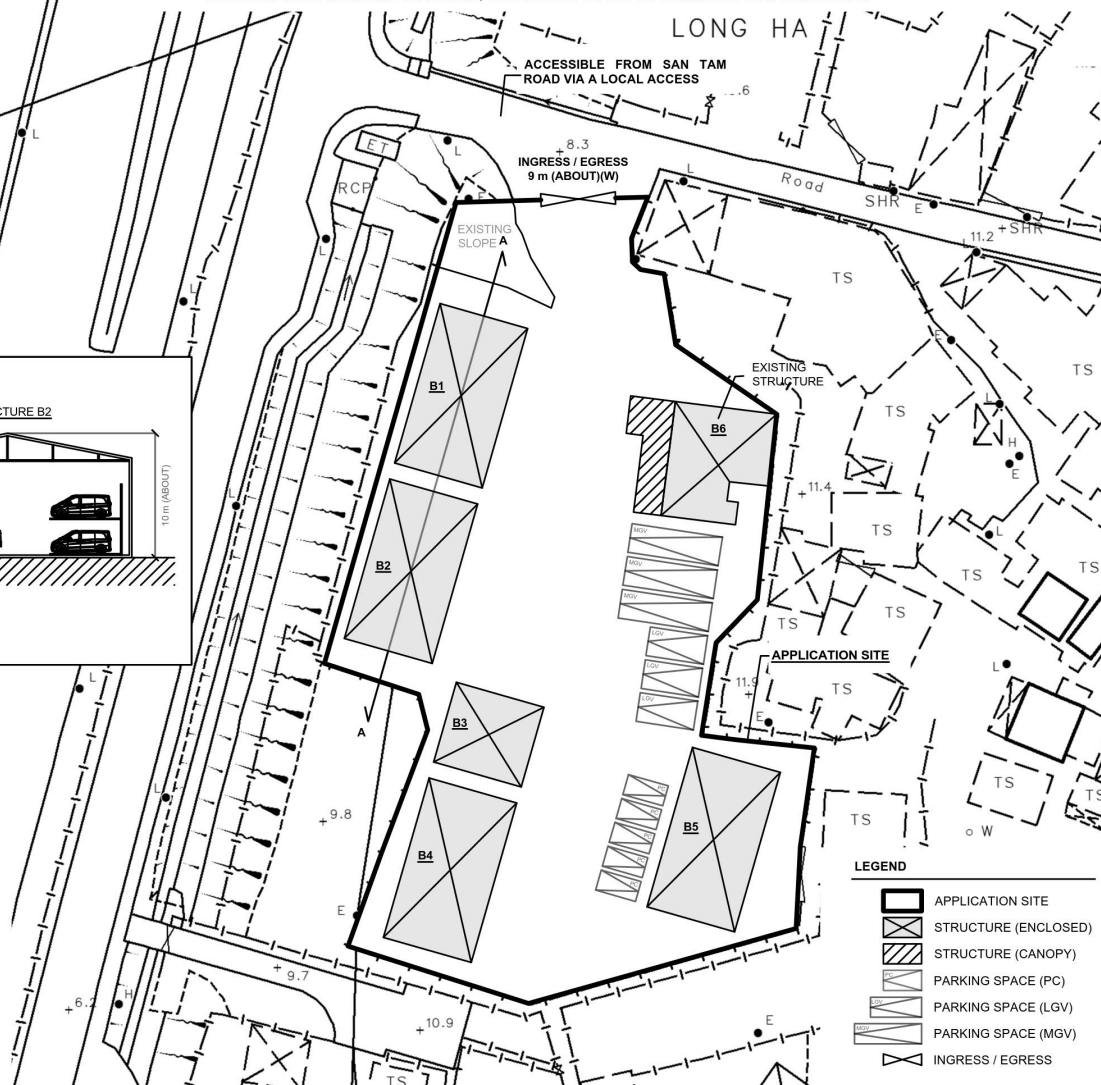
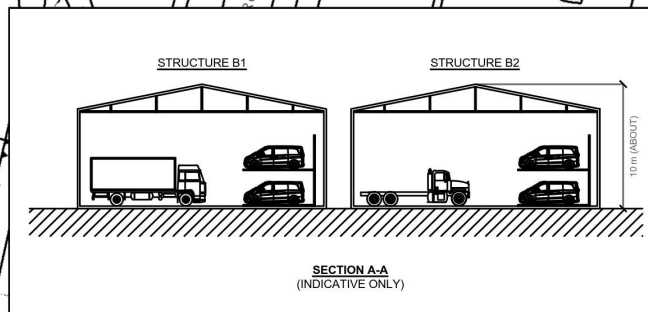
| | |
|-------------|------|
| APPROVED BY | DATE |
|-------------|------|

| | |
|------------|--|
| | |
| DWG. TITLE | |

| | |
|-------------|-----|
| LAYOUT PLAN | |
| DWG NO. | VER |

PARKING PROVISIONS

| | |
|---|-----------------------|
| NO. OF PRIVATE CAR PARKING SPACE | : 5 |
| DIMENSION OF PARKING SPACE | : 5 m (L) x 2.5 m (W) |
| NO. OF LIGHT GOODS VEHICLE PARKING SPACE | : 3 |
| DIMENSION OF PARKING SPACE | : 7 m (L) x 3.5 m (W) |
| NO. OF MEDIUM GOODS VEHICLE PARKING SPACE | : 3 |
| DIMENSION OF PARKING SPACE | : 7 m (L) x 3.5 m (W) |



(Extract from Applicant's Further Information Submitted on 20.5.2024)

參考編號
REFERENCE No.
A/YL-KTN/1009

繪圖
DRAWING
A-1



要覽圖 KEY PLAN
SCALE 1 : 50 000 比例尺



S/YL-MP/7

S/YL-NTM/13

申請地點
APPLICATION SITE

綜合發展包括濕地修復區
COMPREHENSIVE
DEVELOPMENT
TO INCLUDE WETLAND
RESTORATION AREA

連接新潭路的通道
Access Leading from
San Tam Road

申請地點
APPLICATION SITE

S/YL-NSW/8

S/YL-KTN/11

圖例 LEGEND

- 243 (17.7.22) 獲批准的申請
APPROVED APPLICATION
- 244 (17.7.22) 被拒絕的申請
REJECTED APPLICATION
- 72 (10.9.22) X
已撤銷
REVOKED
- 會議日期
DATE OF MEETING
- 申請編號
APPLICATION NUMBER

申請地點界線只作識別用
APPLICATION SITE BOUNDARY
FOR IDENTIFICATION PURPOSE ONLY

位置圖及同類申請 LOCATION PLAN WITH SIMILAR APPLICATIONS

擬議臨時商店及服務行業連附屬設施（為期5年）
PROPOSED TEMPORARY SHOP AND SERVICES WITH
ANCILLARY FACILITIES FOR A PERIOD OF 5 YEARS
VARIOUS LOTS IN D.D. 104 AND ADJOINING GOVERNMENT LAND,
LONG HA, SAN TIN, YUEN LONG, NEW TERRITORIES

SCALE 1 : 7 500 比例尺

米 100 0 100 200 300 米
METRES

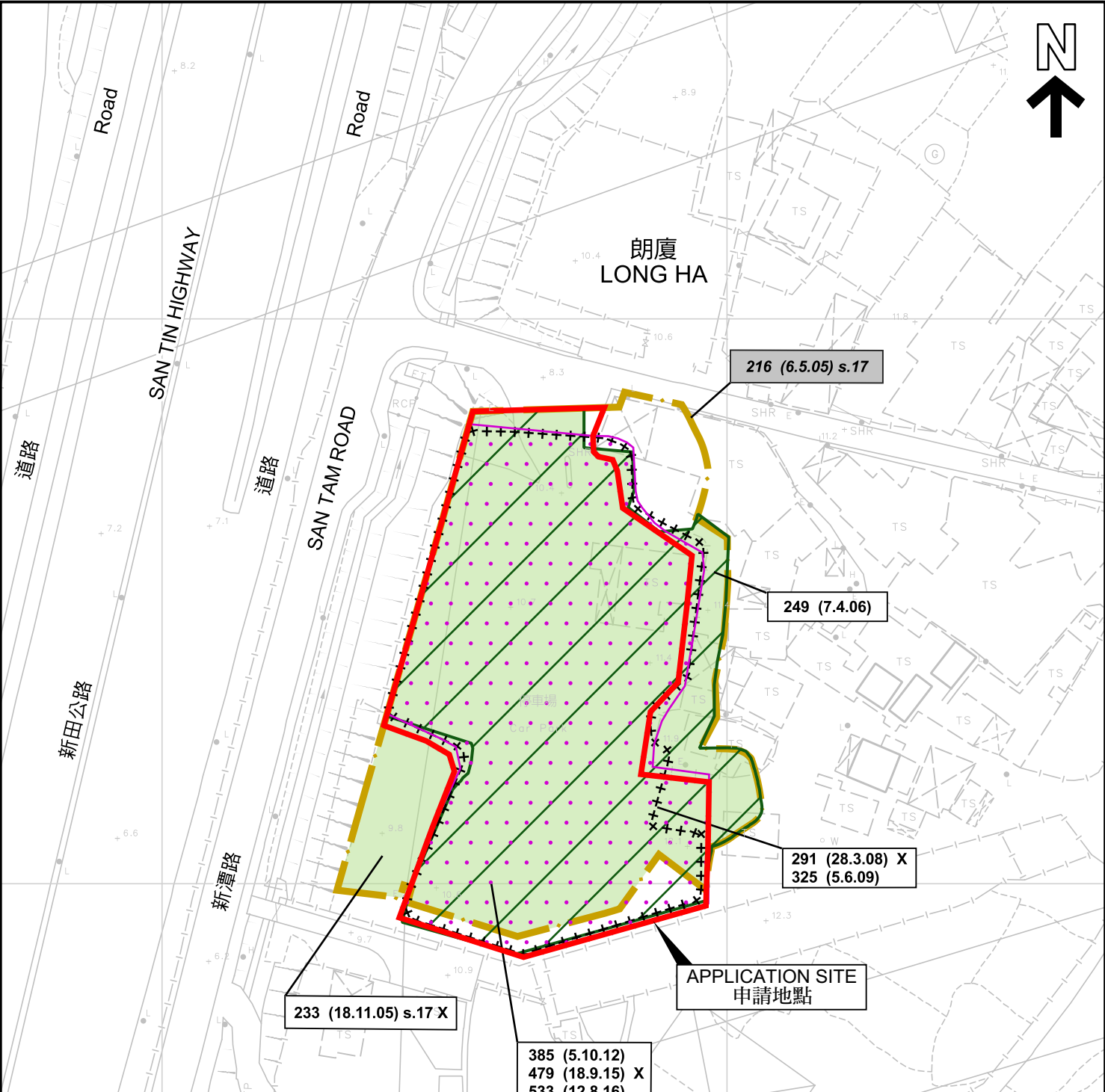
規劃署
PLANNING
DEPARTMENT



參考編號
REFERENCE No.
A/YL-KTN/1009

圖 PLAN
A-1a

本摘要圖於2024年5月20日擬備，
所根據的資料為於2023年12月5日
核准的分區計劃大綱圖編號 S/YL-KTN/11
EXTRACT PLAN PREPARED ON 20.5.2024
BASED ON OUTLINE ZONING PLAN No.
S/YL-KTN/11 APPROVED ON 5.12.2023



圖例 LEGEND

| | |
|-----------------------|--------------------------------|
| 243 (17.7.04) | 獲批准的申請 APPROVED APPLICATION |
| 244 (17.7.04) | 被拒絕的申請 REJECTED APPLICATION |
| 72 (10.9.99) X | 已撤銷 REVOKED |
| — | 會議日期 DATE OF MEETING |
| — | 申請編號 APPLICATION NUMBER |

申請地點界線只作識別用
APPLICATION SITE BOUNDARY
FOR IDENTIFICATION PURPOSE ONLY

先前申請圖 PREVIOUS APPLICATION PLAN

擬議臨時商店及服務行業連附屬設施（為期5年）
新界元朗新田朗廈丈量約份第104約多個地段和毗連政府土地
PROPOSED TEMPORARY SHOP AND SERVICES WITH
ANCILLARY FACILITIES FOR A PERIOD OF 5 YEARS
VARIOUS LOTS IN D.D. 104 AND ADJOINING GOVERNMENT LAND,
LONG HA, SAN TIN, YUEN LONG, NEW TERRITORIES

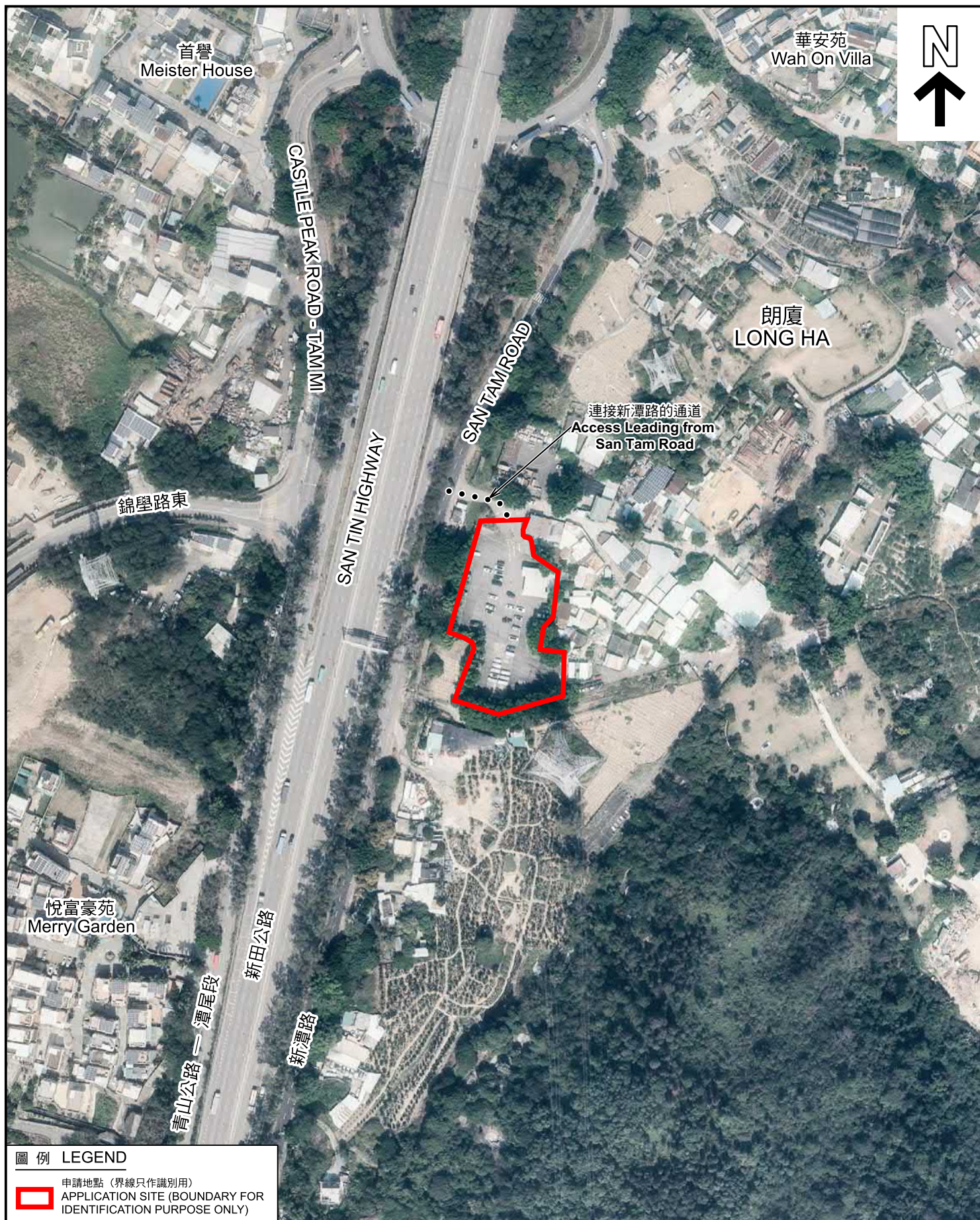
SCALE 1 : 1 000 比例尺

米 20 0 20 40 米
METRES

**規劃署
PLANNING
DEPARTMENT**

參考編號
REFERENCE No.
A/YL-KTN/1009

**圖 PLAN
A-1b**



圖例 LEGEND



申請地點 (界線只作識別用)
APPLICATION SITE (BOUNDARY FOR
IDENTIFICATION PURPOSE ONLY)

航攝照片 AERIAL PHOTO

本摘要圖於2024年4月26日擬備，
所根據的資料為地政總署於2023年2月23日
拍得的航攝照片編號E186463C
EXTRACT PLAN PREPARED ON 26.4.2024
BASED ON AERIAL PHOTO NO.
E186463C TAKEN ON
23.2.2023 BY LANDS DEPARTMENT

擬議臨時商店及服務行業連附屬設施 (為期5年)
新界元朗新田朗廈丈量約份第104約多個地段和毗連政府土地
PROPOSED TEMPORARY SHOP AND SERVICES WITH
ANCILLARY FACILITIES FOR A PERIOD OF 5 YEARS
VARIOUS LOTS IN D.D. 104 AND ADJOINING GOVERNMENT LAND,
LONG HA, SAN TIN, YUEN LONG, NEW TERRITORIES

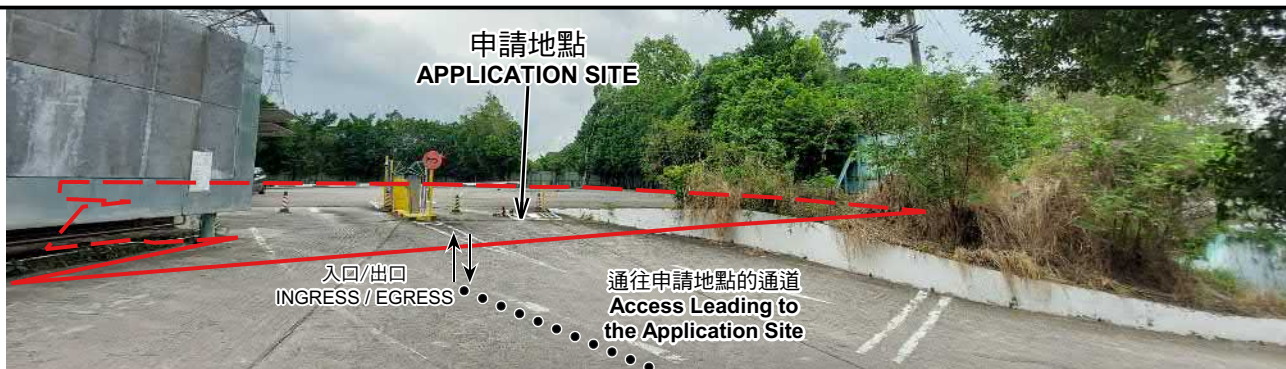
規劃署
PLANNING
DEPARTMENT



參考編號
REFERENCE No.
A/YL-KTN/1009

圖 PLAN
A-3

1



2



3



4



申請地點界線只作識別用 APPLICATION SITE BOUNDARY FOR IDENTIFICATION PURPOSE ONLY

實地照片 SITE PHOTOS

本圖於2024年4月24日擬備，所根據的資料為攝於2024年4月5日的實地照片
PLAN PREPARED ON 24.4.2024
BASED ON SITE PHOTOS
TAKEN ON 5.4.2024

擬議臨時商店及服務行業連附屬設施（為期5年）
新界元朗新田朗厦丈量約份第104約多個地段和毗連政府土地
PROPOSED TEMPORARY SHOP AND SERVICES WITH
ANCILLARY FACILITIES FOR A PERIOD OF 5 YEARS
VARIOUS LOTS IN D.D. 104 AND ADJOINING GOVERNMENT LAND,
LONG HA, SAN TIN, YUEN LONG, NEW TERRITORIES

規劃署
PLANNING
DEPARTMENT



參考編號
REFERENCE No.
A/YL-KTN/1009

圖 PLAN
A-4