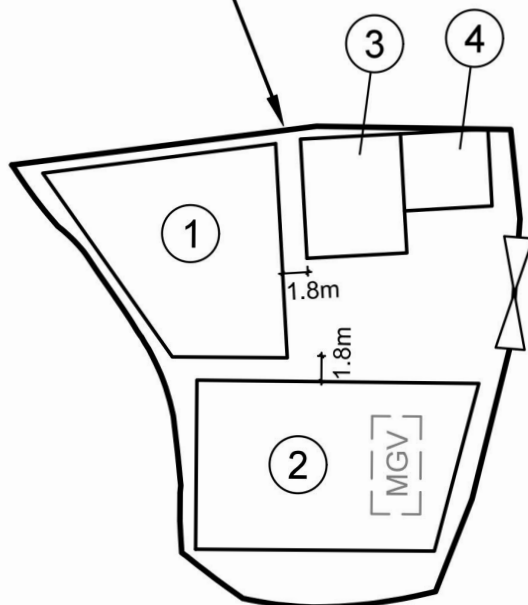




Application Site



Legend



Vehicular Ingress / Egress



Parking space for medium goods vehicle
(7m (L) x 3.5m (W))

Site Area(about): 858m²

No.	Uses	Covered Area (about)	Floor Area (about)	No. of Storeys	Height
1	Warehouse with Ancillary Office	225m ²	225m ²	1	7m
2	Warehouse with Ancillary Office	225m ²	225m ²	1	7m
3	Warehouse	61m ²	61m ²	1	7m
4	Warehouse	35m ²	35m ²	1	7m
Total		546m ²	546m ²		

1:500	Layout Plan Lots 207 S.A(part) and 207 S.B(part) in D.D. 110 Yuen Long, N.T.	Goldrich Planners & Surveyors Ltd.
December 2024		Plan 3 (P 24076)

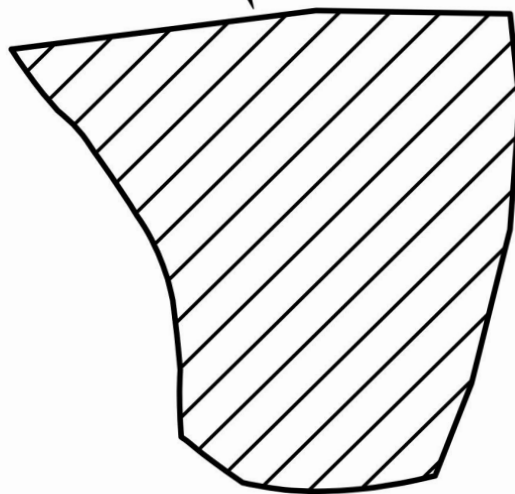
(摘錄自申請人於 3.1.2025 呈交的申請書)
(Extract from Applicant's
Submission of 3.1.2025)

參考編號
REFERENCE No.
AYL-KTN/1082

繪圖
DRAWING
A - 1



Application Site



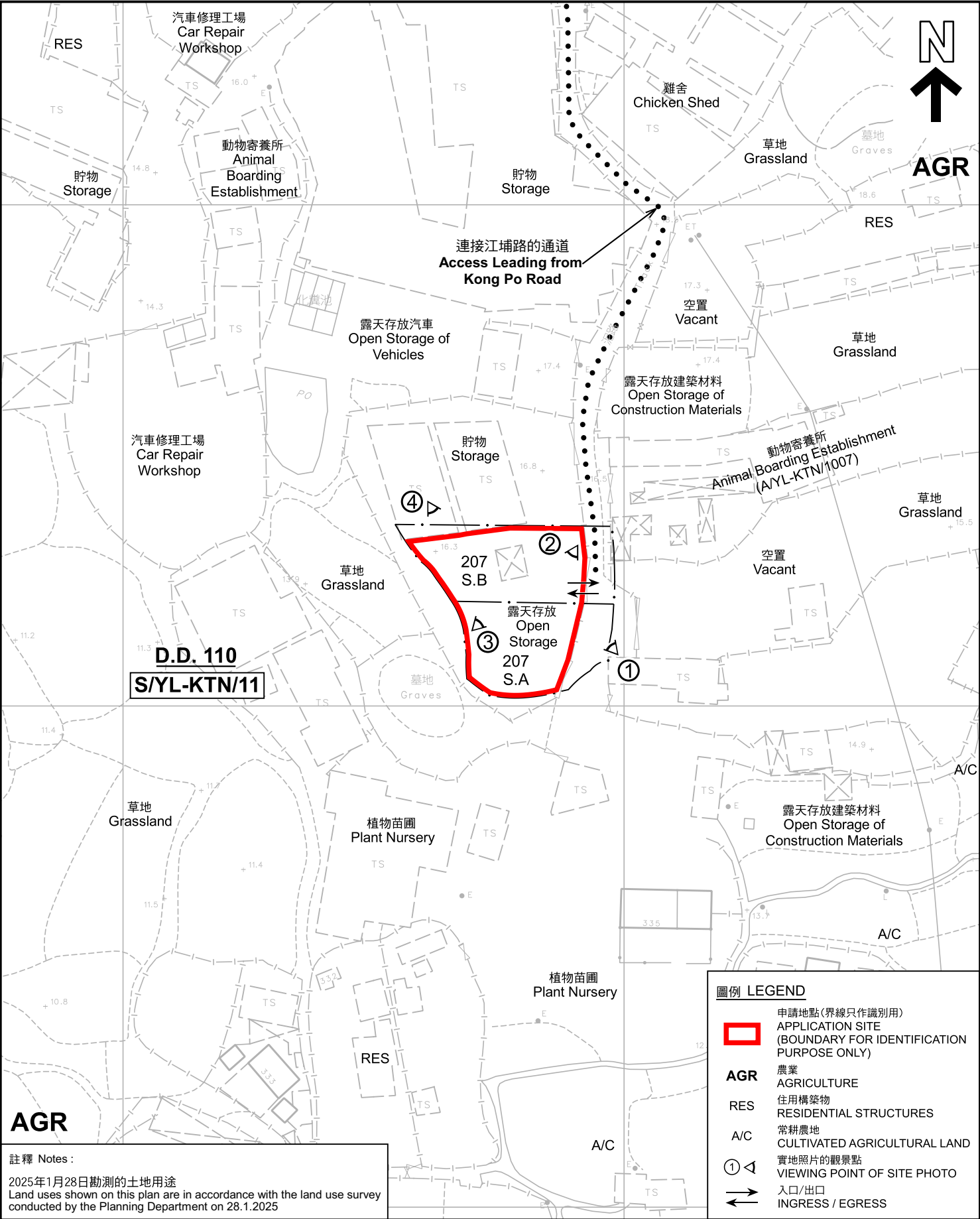
The site is hard-paved with concrete of about 0.2m in depth to provide a solid ground for the erection of temporary structures and vehicle maneuvering.

N.T.S	Plan Showing Existing Filling of Land Lots 207 S.A(part) and 207 S.B(part) in D.D. 110 Yuen Long, N.T.	Goldrich Planners & Surveyors Ltd.
December 2024		Plan 5 (P 24076)

(摘錄自申請人於 3.1.2025 呈交的申請書)
(Extract from Applicant's
Submission of 3.1.2025)

參考編號
REFERENCE No.
A/YL-KTN/1082

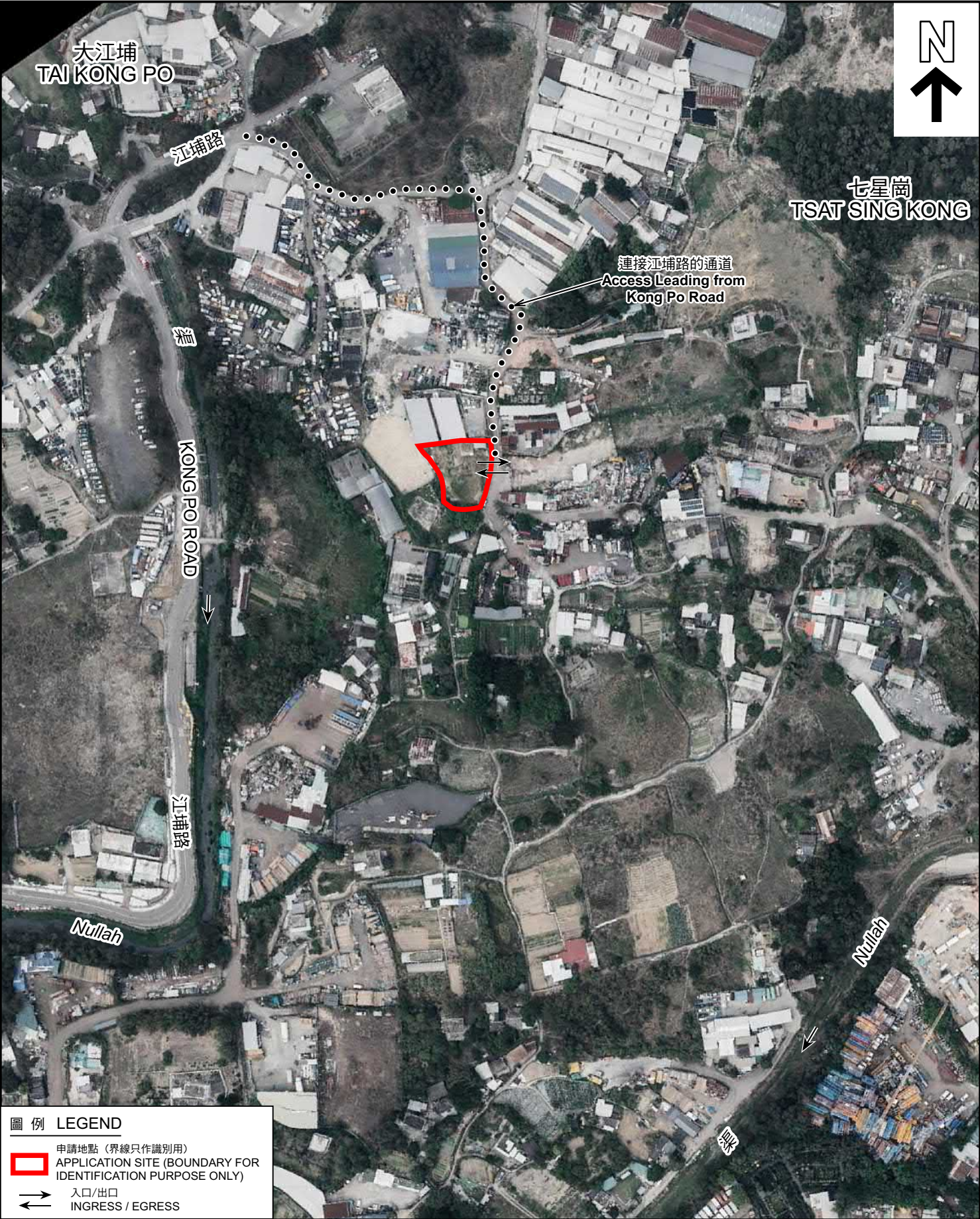
繪圖
DRAWING
A - 2



註釋 Notes :

2025年1月28日勘測的土地用途
Land uses shown on this plan are in accordance with the land use survey
conducted by the Planning Department on 28.1.2025

本摘要圖於2025年2月12日擬備，
所根據的資料為測量圖編號
6-NE-8A、8B、8C 及 8D
EXTRACT PLAN PREPARED ON 12.2.2025
BASED ON SURVEY SHEETS No.
6-NE-8A, 8B, 8C & 8D



圖例 LEGEND

 申請地點 (界線只作識別用)
APPLICATION SITE (BOUNDARY FOR IDENTIFICATION PURPOSE ONLY)

 入口/出口
INGRESS / EGRESS

本摘要圖於2025年2月12日擬備，
所根據的資料為地政總署於2024年3月19日
拍得的航攝照片編號 E219697C
EXTRACT PLAN PREPARED ON 12.2.2025
BASED ON AERIAL PHOTO No.
E219697C TAKEN ON 19.3.2024
BY LANDS DEPARTMENT

航攝照片 AERIAL PHOTO

擬議臨時貨倉(危險品倉庫除外)(為期3年)及相關的填土工程
新界元朗錦田丈量約份第110約
地段第207號A分段(部分)及第207號B分段(部分)
PROPOSED TEMPORARY WAREHOUSE
(EXCLUDING DANGEROUS GOODS GODOWN)
FOR A PERIOD OF 3 YEARS AND ASSOCIATED FILLING OF LAND
LOTS 207 S.A (PART) AND 207 S.B (PART) IN D.D. 110,
KAM TIN, YUEN LONG, NEW TERRITORIES

規劃署 PLANNING DEPARTMENT		
參考編號 REFERENCE No. A/YL-KTN/1082	圖 PLAN A-3	

1

申請地點
APPLICATION SITE



2



3



4



申請地點界線只作識別用 APPLICATION SITE BOUNDARY FOR IDENTIFICATION PURPOSE ONLY

實地照片 SITE PHOTOS

擬議臨時貨倉(危險品倉庫除外)(為期3年)及相關的填土工程
新界元朗錦田丈量約份第110約
地段第207號A分段(部分)及第207號B分段(部分)
PROPOSED TEMPORARY WAREHOUSE
(EXCLUDING DANGEROUS GOODS GODOWN)
FOR A PERIOD OF 3 YEARS AND ASSOCIATED FILLING OF LAND
LOTS 207 S.A (PART) AND 207 S.B (PART) IN D.D. 110,
KAM TIN, YUEN LONG, NEW TERRITORIES

規劃署
PLANNING
DEPARTMENT



參考編號
REFERENCE No.
A/YL-KTN/1082

圖 PLAN
A-4

本圖於2025年2月12日擬備，所根據的資料為攝於2025年1月28日的實地照片
PLAN PREPARED ON 12.2.2025
BASED ON SITE PHOTOS
TAKEN ON 28.1.2025