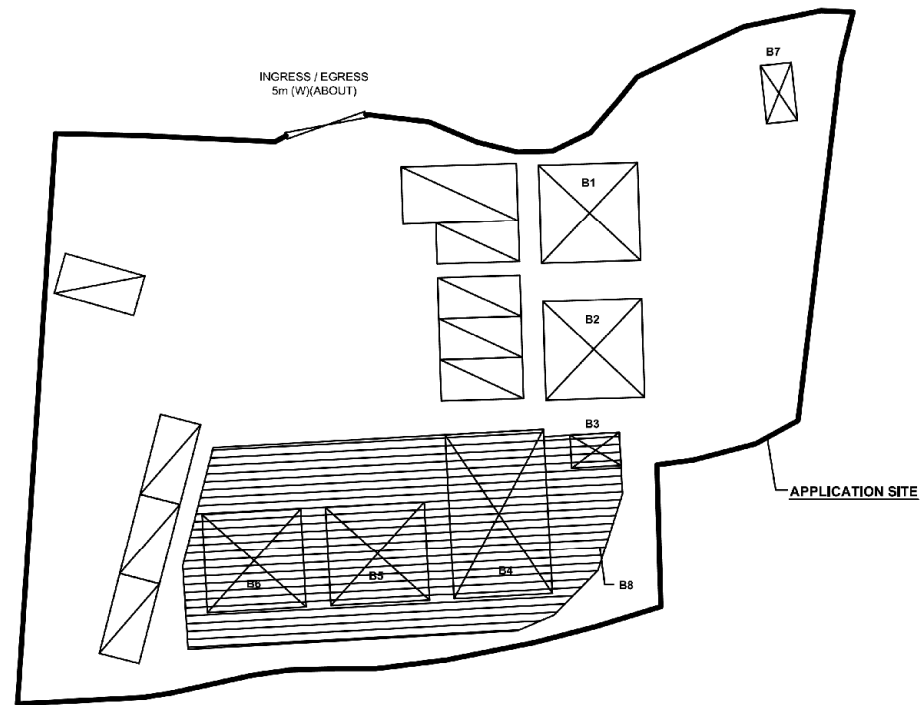


DEVELOPMENT PARAMETERS

APPLICATION SITE AREA	: 1,483m <sup>2</sup> (ABOUT)
COVERED AREA	: 299m <sup>2</sup> (ABOUT)
UNCOVERED AREA	: 1,184m <sup>2</sup> (ABOUT)
NO. OF STRUCTURE	: 8
TOTAL GFA	: 299m <sup>2</sup> (ABOUT)
BUILDING HEIGHT	: 3m - 4m (ABOUT)
NO. OF STOREY	: 1

STRUCTURE	USE	COVERED AREA	GFA	BUILDING HEIGHT
B1	FINANCIAL INSTITUTION (RECEPTION)	36m <sup>2</sup> (ABOUT)	36m <sup>2</sup> (ABOUT)	3.5m (ABOUT)(1-STOREY)
B2	FINANCIAL INSTITUTION (BACK OFFICE)	36m <sup>2</sup> (ABOUT)	36m <sup>2</sup> (ABOUT)	3.5m (ABOUT)(1-STOREY)
B3	WASHROOM	COVERED BY B8	COVERED BY B8	3.5m (ABOUT)(1-STOREY)
B4	EATING PLACE (STAFF CANTEEN)	COVERED BY B8	COVERED BY B8	3.5m (ABOUT)(1-STOREY)
B5	FINANCIAL INSTITUTION (BACK OFFICE)	COVERED BY B8	COVERED BY B8	3.5m (ABOUT)(1-STOREY)
B6	FINANCIAL INSTITUTION (MEETING ROOM)	COVERED BY B8	COVERED BY B8	3.5m (ABOUT)(1-STOREY)
B7	STORAGE OF DOCUMENTS	7m <sup>2</sup> (ABOUT)	7m <sup>2</sup> (ABOUT)	3m (ABOUT)(1-STOREY)
B8	RAIN SHELTER (CANOPY)	220m <sup>2</sup> (ABOUT)	220m <sup>2</sup> (ABOUT)	4m (ABOUT)(1-STOREY)
TOTAL		299m <sup>2</sup> (ABOUT)	299m <sup>2</sup> (ABOUT)	

\*B4 EATING PLACE (STAFF CANTEEN) - 60m<sup>2</sup> (ABOUT)



PARKING PROVISION

NO. OF PRIVATE CAR PARKING SPACE	: 8
DIMENSION OF PARKING SPACE	: 2.5m (W) X 5m (L)
NO. OF L/UL SPACE FOR LGV	: 1
DIMENSION OF L/UL SPACE	: 3.5m (W) X 7m (L)

LEGEND

	STRUCTURE
	CANOPY
	PARKING / L/UL SPACE
	INGRESS / EGRESS

(摘錄自申請人於9. 3. 2021呈交的進一步資料)  
(Extract from Applicant's Further  
Information Submitted on 9.3.2021)

參考編號  
REFERENCE No.  
A/YL-KTN/751

繪圖 DRAWING  
A-1









圖例 LEGEND



申請地點(界線只作識別用)  
APPLICATION SITE  
(BOUNDARY FOR IDENTIFICATION  
PURPOSE ONLY)

本摘要圖於2021年3月8日擬備，所根據的資料為地政總署於2019年10月18日拍得的航攝照片編號 E072407C  
EXTRACT PLAN PREPARED ON 8.3.2021  
BASED ON AERIAL PHOTO No.  
E072407C TAKEN ON 18.10.2019  
BY LANDS DEPARTMENT

航攝照片 AERIAL PHOTO

擬議臨時服務行業(財務公司)及附屬員工食堂(為期 3 年)  
新界元朗錦田新潭路丈量約份第 104 約地段第4122號、  
第4123號、第4124號及第4125號(部分)和毗連政府土地  
TEMPORARY SHOP AND SERVICES (FINANCIAL INSTITUTION)  
WITH ANCILLARY STAFF CANTEEN FOR A PERIOD OF 3 YEARS  
LOTS 4122, 4123, 4124 AND 4125 (PART) IN D.D. 104  
AND ADJOINING GOVERNMENT LAND, SAN TAM ROAD,  
KAM TIN, YUEN LONG, NEW TERRITORIES

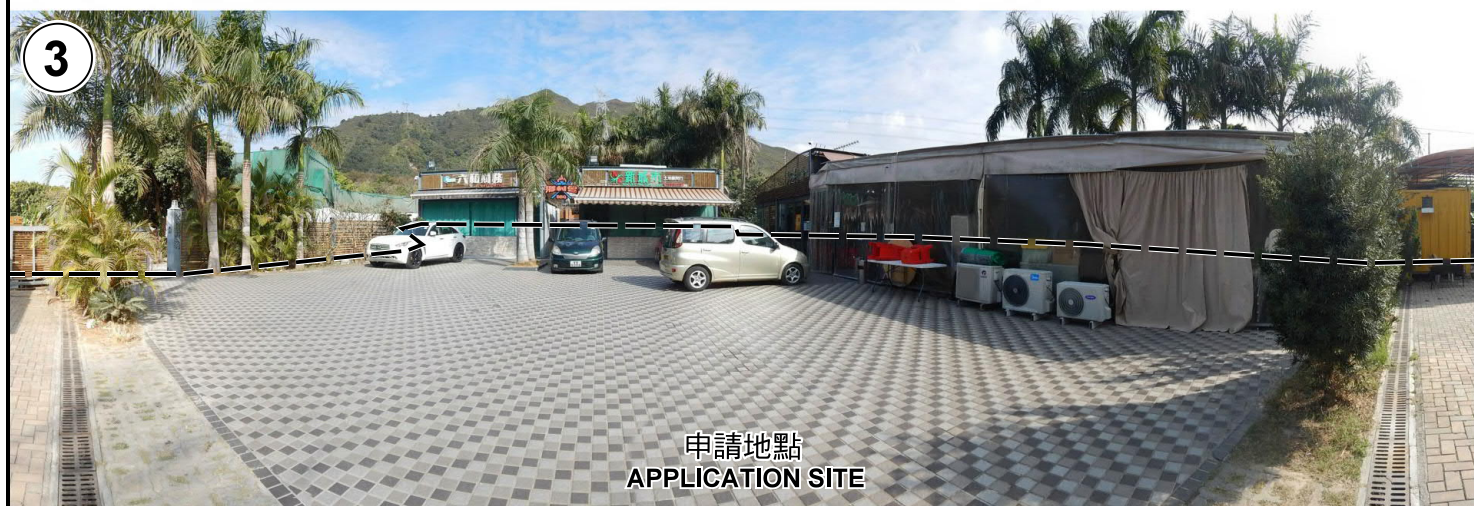
規劃署  
PLANNING  
DEPARTMENT



參考編號  
REFERENCE No.  
A/YL-KTN/751

圖 PLAN  
A-3





申請地點界線只作識別用 APPLICATION SITE BOUNDARY FOR IDENTIFICATION PURPOSE ONLY

### 實地照片 SITE PHOTOS

擬議臨時服務行業（財務公司）及附屬員工食堂（為期 3 年）  
 新界元朗錦田新潭路丈量約份第 104 約地段第4122號、  
 第4123號、第4124號及第4125號（部分）和毗連政府土地  
 TEMPORARY SHOP AND SERVICES (FINANCIAL INSTITUTION)  
 WITH ANCILLARY STAFF CANTEEN FOR A PERIOD OF 3 YEARS  
 LOTS 4122, 4123, 4124 AND 4125 (PART) IN D.D. 104  
 AND ADJOINING GOVERNMENT LAND, SAN TAM ROAD,  
 KAM TIN, YUEN LONG, NEW TERRITORIES

規劃署  
 PLANNING  
 DEPARTMENT



參考編號  
 REFERENCE No.  
 A/YL-KTN/751

圖 PLAN  
 A-4a

本圖於2021年3月8日擬備，所根據的  
 資料為攝於2021年2月8日的實地照片  
 PLAN PREPARED ON 8.3.2021  
 BASED ON SITE PHOTOS  
 TAKEN ON 8.2.2021



4



5



6



申請地點界線只作識別用 APPLICATION SITE BOUNDARY FOR IDENTIFICATION PURPOSE ONLY

### 實地照片 SITE PHOTOS

本圖於2021年3月8日擬備，所根據的資料為攝於2021年2月8日的實地照片  
PLAN PREPARED ON 8.3.2021  
BASED ON SITE PHOTOS  
TAKEN ON 8.2.2021

擬議臨時服務行業（財務公司）及附屬員工食堂（為期 3 年）  
新界元朗錦田新潭路丈量約份第 104 約地段第4122號、  
第4123號、第4124號及第4125號（部分）和毗連政府土地  
TEMPORARY SHOP AND SERVICES (FINANCIAL INSTITUTION)  
WITH ANCILLARY STAFF CANTEEN FOR A PERIOD OF 3 YEARS  
LOTS 4122, 4123, 4124 AND 4125 (PART) IN D.D. 104  
AND ADJOINING GOVERNMENT LAND, SAN TAM ROAD,  
KAM TIN, YUEN LONG, NEW TERRITORIES

規劃署  
PLANNING  
DEPARTMENT



參考編號  
REFERENCE No.  
AYL-KTN/751

圖 PLAN  
A-4b