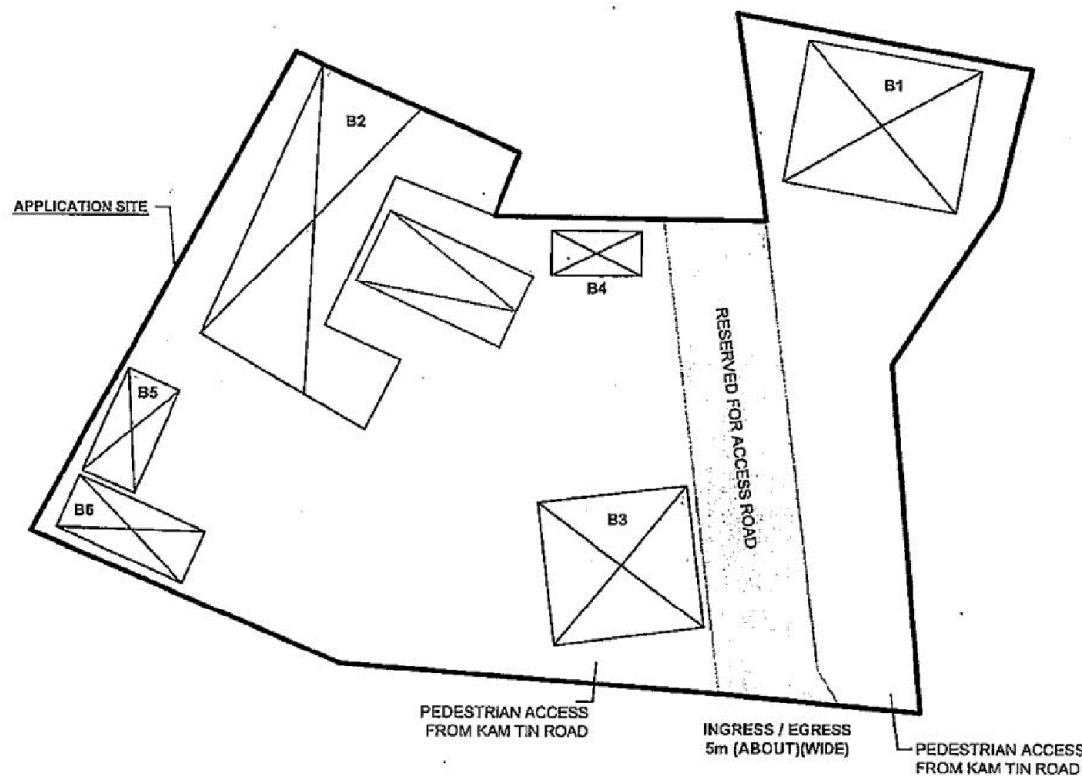
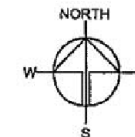


# DEVELOPMENT PARAMETERS OF THE APPLICATION SITE

APPLICATION SITE AREA	: 668m <sup>2</sup> (ABOUT)
COVERED AREA	: 222m <sup>2</sup> (ABOUT)
UNCOVERED AREA	: 446m <sup>2</sup> (ABOUT)
PLOT RATIO	: 0.3 (ABOUT)
SITE COVERAGE	: 26% (ABOUT)
NO. OF STRUCTURE	: 6
DOMESTIC GFA	: NOT APPLICABLE
NON-DOMESTIC GFA	: 222m <sup>2</sup> (ABOUT)
BUILDING HEIGHT	: 3m - 4.6m (ABOUT)
NO. OF STOREY	: 1

STRUCTURE	USE	COVERED AREA	GFA	BUILDING HEIGHT
B1	SHOP AND SERVICES	50m <sup>2</sup> (ABOUT)	50m <sup>2</sup> (ABOUT)	3.5m (ABOUT) (1-STOREY)
B2	SHOP AND SERVICES	92m <sup>2</sup> (ABOUT)	92m <sup>2</sup> (ABOUT)	4m (ABOUT) (1-STOREY)
B3	SHOP AND SERVICES	42m <sup>2</sup> (ABOUT)	42m <sup>2</sup> (ABOUT)	4.6m (ABOUT) (1-STOREY)
B4	FIRE SERVICE WATER TANK	5m <sup>2</sup> (ABOUT)	8m <sup>2</sup> (ABOUT)	3m (ABOUT) (1-STOREY)
B5	STORAGE OF GOODS	15m <sup>2</sup> (ABOUT)	15m <sup>2</sup> (ABOUT)	3m (ABOUT) (1-STOREY)
B6	STORAGE OF GOODS	15m <sup>2</sup> (ABOUT)	15m <sup>2</sup> (ABOUT)	3m (ABOUT) (1-STOREY)
TOTAL		222m <sup>2</sup> (ABOUT)	222m <sup>2</sup> (ABOUT)	



## PARKING PROVISIONS

NO. OF PRIVATE CAR PARKING SPACE	: N/A
DIMENSION OF PARKING SPACE	: N/A
NO. OF LOADING/UNLOADING SPACE FOR LGV	: 1
DIMENSION OF PARKING SPACE	: 3.5m (W) X 7m (L)

## LEGEND

	APPLICATION SITE
	STRUCTURE
	LOADING/UNLOADING SPACE

Drawing No.	Ver.
P04	01
Project	
PROPOSED TEMPORARY SHOP AND SERVICES FOR A PERIOD OF 5 YEARS	
LOT 283 S.A. RP (PART) IN D.D. 109, KAM TIN ROAD, KAM TIN, YUEN LONG, NEW TERRITORIES	
Drawing Title	
LAYOUT PLAN	
Scale of A4	
1:300	
Drawn	Date
	29.12.2020
Revised	Date

(摘錄自申請人於 27.1.2021 呈交的申請書)  
(Extract from Applicant's Submission of 27.1.2021)

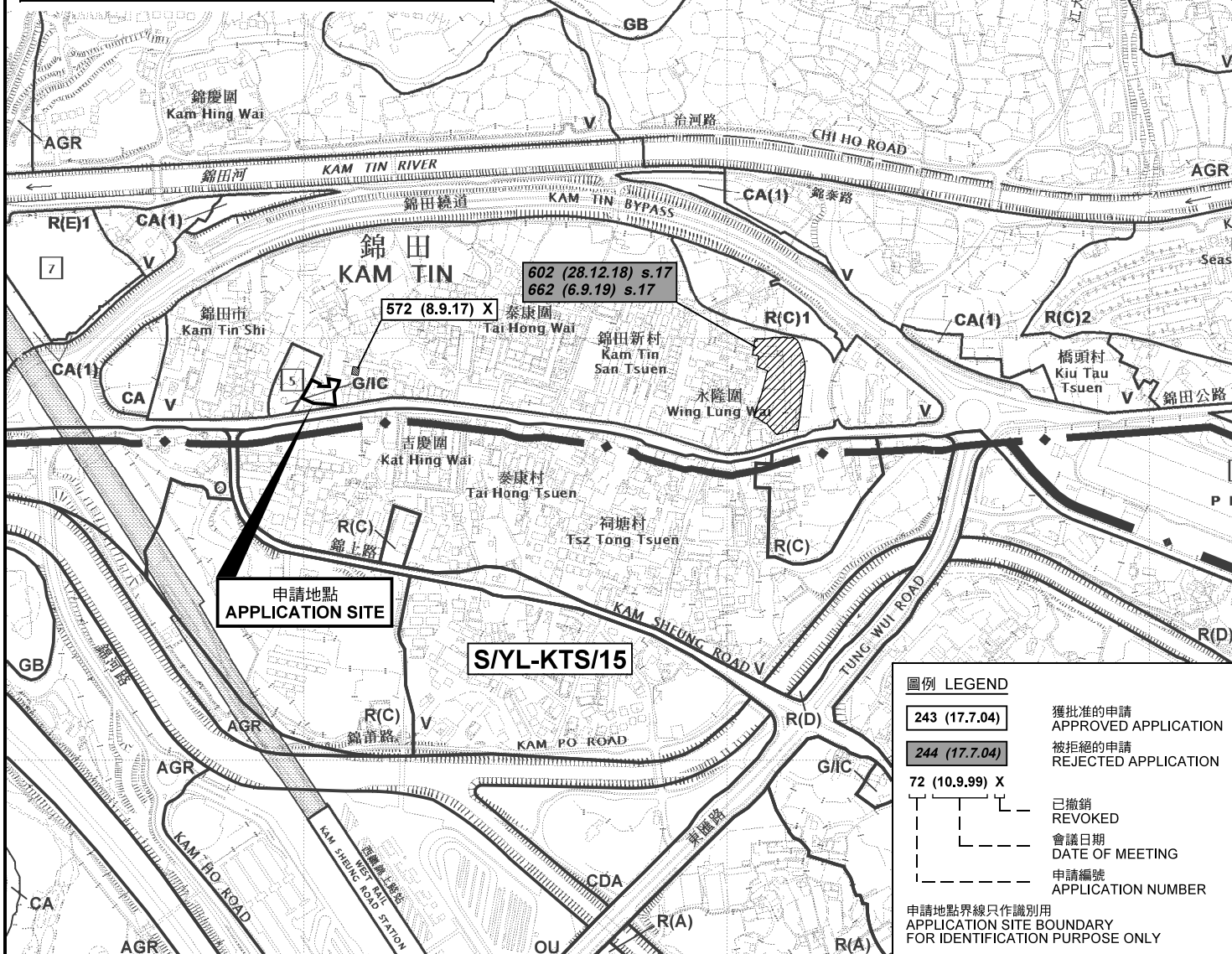
參考編號  
REFERENCE No.  
A/YL-KTN/753

繪圖 DRAWING  
A-1



### 要覽圖 KEY PLAN

SCALE 1 : 50 000 比例尺



### 圖例 LEGEND

- 243 (17.7.04) 獲批准的申請  
APPROVED APPLICATION
- 244 (17.7.04) 被拒絕的申請  
REJECTED APPLICATION
- 72 (10.9.99) X 已撤銷  
REVOKED
- 會議日期  
DATE OF MEETING
- 申請編號  
APPLICATION NUMBER

申請地點界線只作識別用  
APPLICATION SITE BOUNDARY  
FOR IDENTIFICATION PURPOSE ONLY

### 位置圖及同類申請 LOCATION PLAN WITH SIMILAR APPLICATIONS

擬議臨時商店及服務行業（為期5年）  
新界元朗錦田錦田路丈量約份第109約地段第283號A分段餘段（部分）  
PROPOSED TEMPORARY SHOP AND SERVICES  
FOR A PERIOD OF 5 YEARS  
LOT 283 S.A RP (PART) IN D.D. 109,  
KAM TIN ROAD, KAM TIN, YUEN LONG, NEW TERRITORIES

SCALE 1 : 7 500 比例尺  
米 100 0 100 200 300 米  
METRES

規劃署  
PLANNING  
DEPARTMENT



參考編號  
REFERENCE No.  
A/YL-KTN/753

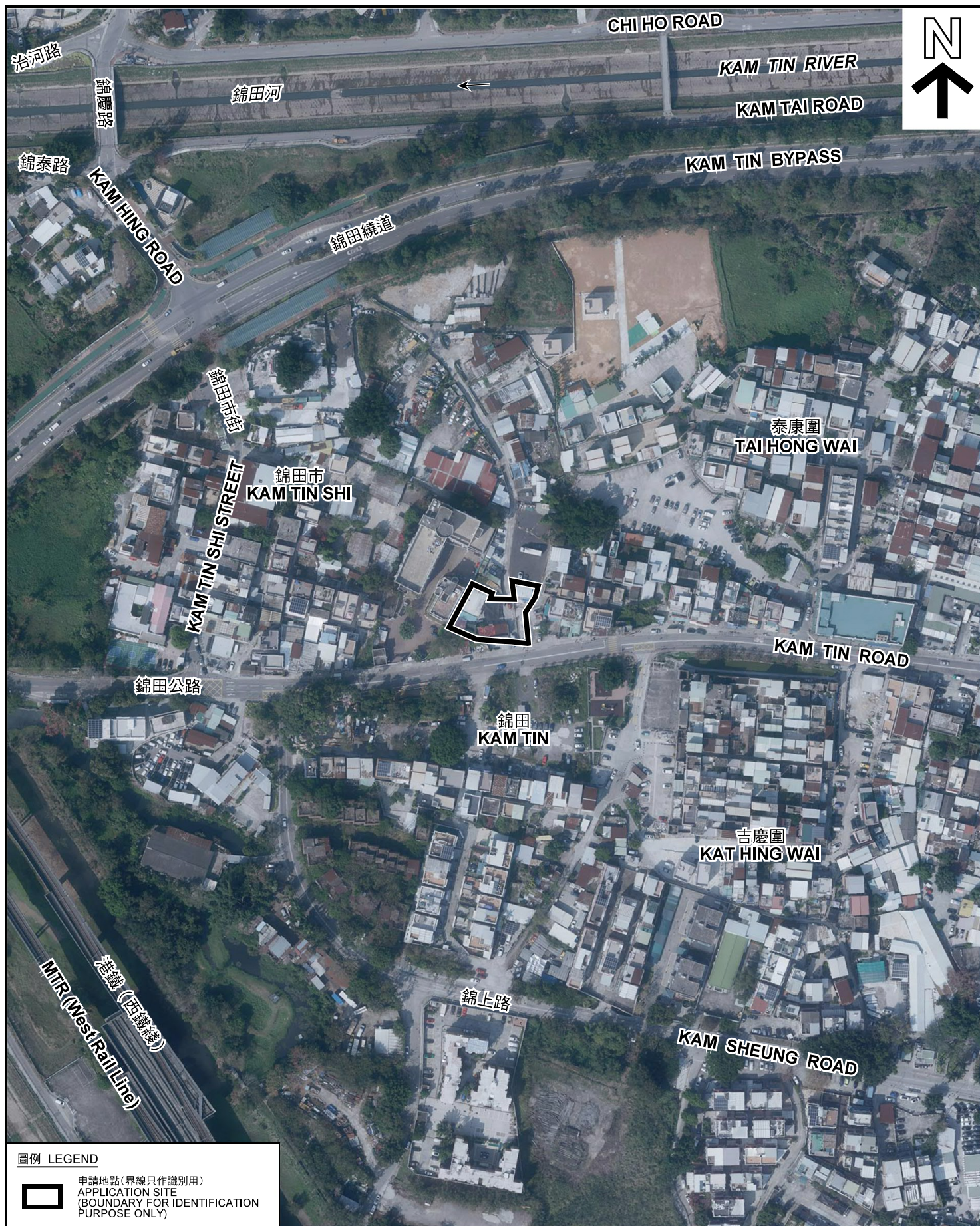
圖 PLAN  
A-1a

本摘要圖於2021年2月24日擬備，  
所根據的資料為於2014年12月2日  
核准的分區計劃大綱圖編號 S/YL-KTN/9  
EXTRACT PLAN PREPARED ON 24.2.2021  
BASED ON OUTLINE ZONING PLAN No.  
S/YL-KTN/9 APPROVED ON 2.12.2014









圖例 LEGEND



申請地點(界線只作識別用)  
APPLICATION SITE  
(BOUNDARY FOR IDENTIFICATION  
PURPOSE ONLY)

本摘要圖於2021年2月24日擬備，所根據的資料為地政總署於2020年2月18日拍得的航攝照片編號 E089236C  
EXTRACT PLAN PREPARED ON 24.2.2021  
BASED ON AERIAL PHOTO No.  
E089236C TAKEN ON 18.2.2020  
BY LANDS DEPARTMENT

航攝照片 AERIAL PHOTO

擬議臨時商店及服務行業（為期5年）  
新界元朗錦田錦田路丈量約份第109約地段第283號A分段餘段（部分）  
PROPOSED TEMPORARY SHOP AND SERVICES  
FOR A PERIOD OF 5 YEARS  
LOT 283 S.A RP (PART) IN D.D. 109,  
KAM TIN ROAD, KAM TIN, YUEN LONG, NEW TERRITORIES

規劃署  
PLANNING  
DEPARTMENT



參考編號  
REFERENCE No.  
A/YL-KTN/753

PLAN  
A-3





申請地點界線只作識別用 APPLICATION SITE BOUNDARY FOR IDENTIFICATION PURPOSE ONLY

### 實地照片 SITE PHOTOS

擬議臨時商店及服務行業（為期5年）  
新界元朗錦田錦田路丈量約份第109約地段第283號A分段餘段（部分）  
PROPOSED TEMPORARY SHOP AND SERVICES  
FOR A PERIOD OF 5 YEARS  
LOT 283 S.A RP (PART) IN D.D. 109,  
KAM TIN ROAD, KAM TIN, YUEN LONG, NEW TERRITORIES

規劃署  
PLANNING  
DEPARTMENT



參考編號  
REFERENCE No.  
A/YL-KTN/753

圖 PLAN  
A-4a

本圖於2021年3月11日擬備，所根據的資料為攝於2021年2月23日的實地照片  
PLAN PREPARED ON 11.3.2021  
BASED ON SITE PHOTOS  
TAKEN ON 23.2.2021





申請地點界線只作識別用 APPLICATION SITE BOUNDARY FOR IDENTIFICATION PURPOSE ONLY

### 實地照片 SITE PHOTOS

擬議臨時商店及服務行業（為期5年）  
新界元朗錦田錦田路丈量約份第109約地段第283號A分段餘段（部分）  
PROPOSED TEMPORARY SHOP AND SERVICES  
FOR A PERIOD OF 5 YEARS  
LOT 283 S.A RP (PART) IN D.D. 109,  
KAM TIN ROAD, KAM TIN, YUEN LONG, NEW TERRITORIES

規劃署  
PLANNING  
DEPARTMENT



參考編號  
REFERENCE No.  
A/YL-KTN/753

圖 PLAN  
A-4b

本圖於2021年3月11日擬備，所根據的資料為攝於2021年2月23日的實地照片  
PLAN PREPARED ON 11.3.2021  
BASED ON SITE PHOTOS  
TAKEN ON 23.2.2021