

LEGEND:



Main Entrance (出入閘門)



Existing Tree (現有樹木)



Planting Tree (Chinese Banyan)
[已種植樹木 (細葉榕)]



Vehicular indication from San Tam
Road leading to Subject Site
(從新潭路通往申請地點的車輛指示)



SAN TIN HIGHWAY

One-storey covered area (12.0mL x 5.5mW x 3.5mH) for 3 nos. private cars parking with metal scaffold display on top
一層高有蓋私家車停車位三個連金屬支架示範 (12.0 米(長) x 5.5 米(闊) x 3.5 米(高))

Two-storey covered area (20.0mL x 7.0mW x 14.0mH) for worker resting area and metal structure storage
兩層高有蓋工人休息處連存放金屬支架 (20.0 米(長) x 7.0 米(闊) x 14.0 米(高))

A series of approx. 2.5m - 3.0m high aluminium sheets painted in dark green has been erected along the periphery of the Site for reducing the noise and visual impacts
有申請地點範圍四周加設約 2.5 米至 3.0 米高的鋁質坑板以作阻隔噪音和美化外觀環境之用

3 nos. of loading/unloading spaces for heavy goods vehicle for metal structure delivery
三個上落重型貨車位給運送金屬支架之用

Two-storey covered area (40.0mL x 18.0mW x 17.0mH) for ancillary office and metal structure storage
兩層高有蓋附屬寫字樓連存放金屬支架 (40.0 米(長) x 18.0 米(闊) x 17.0 米(高))

Maneuvering Area
迴旋點

A 6.0m width entrance/exit has been provided for Site daily operation
申請地點安裝約 6.0 米闊的閘門給車輛日常出入運作之用

SUBJECT SITE
主題地點

Surface channel and catchpits have been constructed along the periphery of the Site for drainage system
在申請地點範圍加裝排水溝和排水井以作渠道設施之用



主題地點
SUBJECT SITE

二零二一年十一月一日根據測量圖編號
6-NE-1B/D 製備的摘要圖
EXTRACT PLAN PREPARED ON 01.11.2021
BASED ON SURVEY SHEET NO(S).
6-NE-1B/D

Schematic Layout Plan

Temporary Open Storage of Construction Materials with ancillary office and metal scaffold display for a period of 3 years at various lots in DD107 and adjoining Government land, San Tam Road, Kam Tin, Yuen Long, New Territories

For Identification Purpose
只供參考之用

計劃編號 PROJECT NO.
P-2021-1101

圖則 FIGURE
03

(摘錄自申請人於 15. 2. 2022 呈交的申請書)
(Extract from Applicant's
Submission of 15.2.2022)

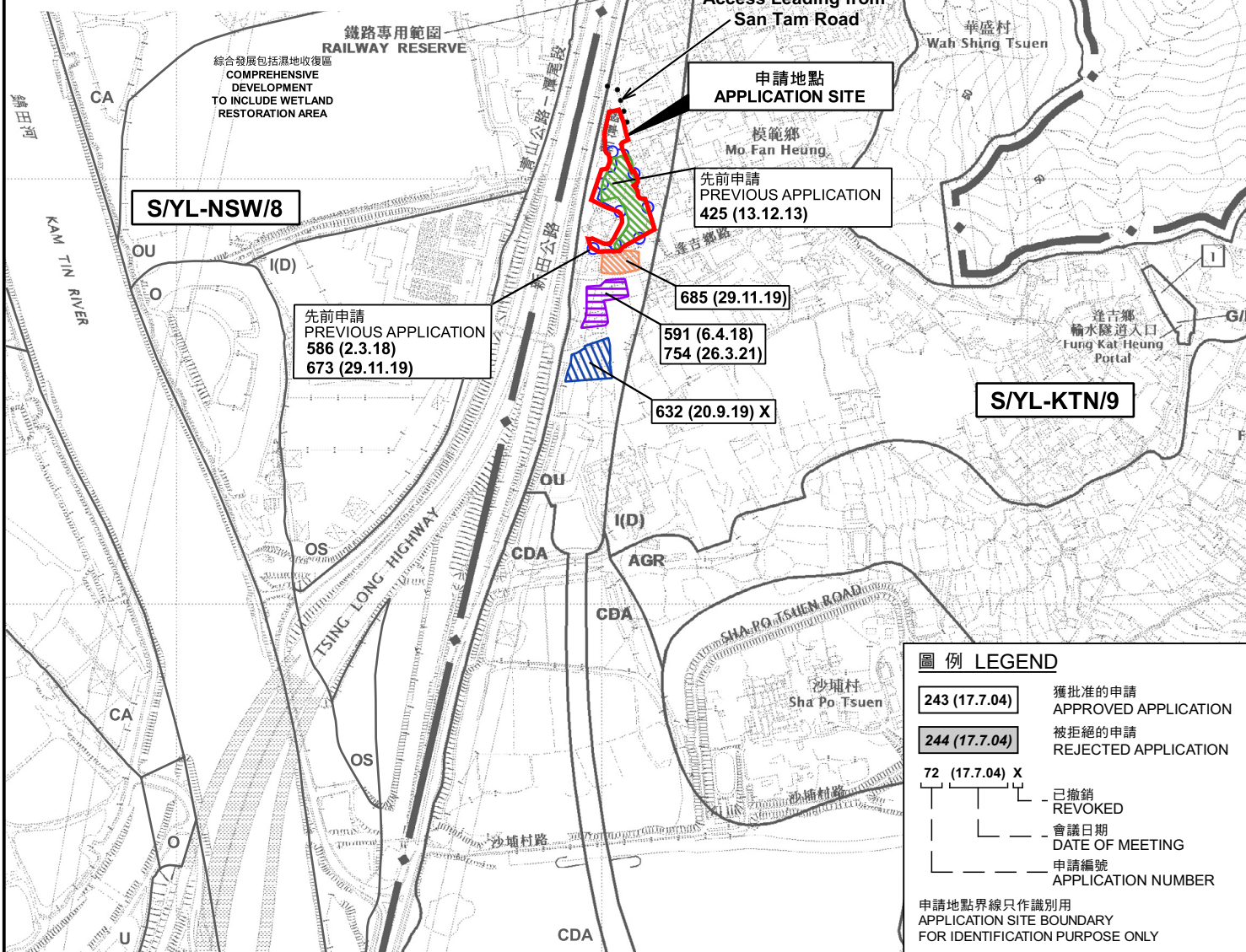
參考編號
REFERENCE No.
A/YL-KTN/825

繪圖
DRAWING
A - 1



要覽圖 KEY PLAN

SCALE 1 : 50 000 比例尺



位置圖及同類申請 LOCATION PLAN WITH SIMILAR APPLICATIONS

臨時露天存放建築材料連附屬寫字樓及金屬支架示範 (為期3年)
新界元朗錦田新潭路丈量約份第107約多個地段
TEMPORARY OPEN STORAGE OF CONSTRUCTION MATERIALS
WITH ANCILLARY OFFICE AND METAL SCAFFOLD DISPLAY
FOR A PERIOD OF 3 YEARS
VARIOUS LOTS IN D.D. 107 AND ADJOINING GOVERNMENT LAND,
SAN TAM ROAD, KAM TIN, YUEN LONG, N.T.

米 100 0 100 200 300 米
METRES SCALE 1 : 7 500 比例尺

本摘要圖於2022年9月15日擬備，
所根據的資料為於2014年12月2日
核准的分區計劃大綱圖編號S/YL-KTN/9
EXTRACT PLAN PREPARED ON 15.9.2022
BASED ON OUTLINE ZONING PLAN
No. S/YL-KTN/9 APPROVED ON 2.12.2014

規劃署
PLANNING
DEPARTMENT



參考編號
REFERENCE No.

A/YL-KTN/825

圖 PLAN

A-1



CASTLE PEAK ROAD - TAM MI
SAN TIN HIGHWAY

SAN TAM ROAD

連接新潭路的通道
Access Leading from
San Tam Road

模範鄉
MO FAN
HEUNG

FUNG KAT HEUNG ROAD

逢吉鄉路

逢吉鄉
FUNG KAT
HEUNG

圖例 LEGEND



申請地點 (界線只作識別用)
APPLICATION SITE
(BOUNDARY FOR IDENTIFICATION
PURPOSE ONLY)

航攝照片 AERIAL PHOTO

臨時露天存放建築材料連附屬寫字樓及金屬支架示範 (為期3年)
新界元朗錦田新潭路丈量約份第107約多個地段
TEMPORARY OPEN STORAGE OF CONSTRUCTION MATERIALS
WITH ANCILLARY OFFICE AND METAL SCAFFOLD DISPLAY
FOR A PERIOD OF 3 YEARS
VARIOUS LOTS IN D.D. 107 AND ADJOINING GOVERNMENT LAND,
SAN TAM ROAD, KAM TIN, YUEN LONG, N.T.

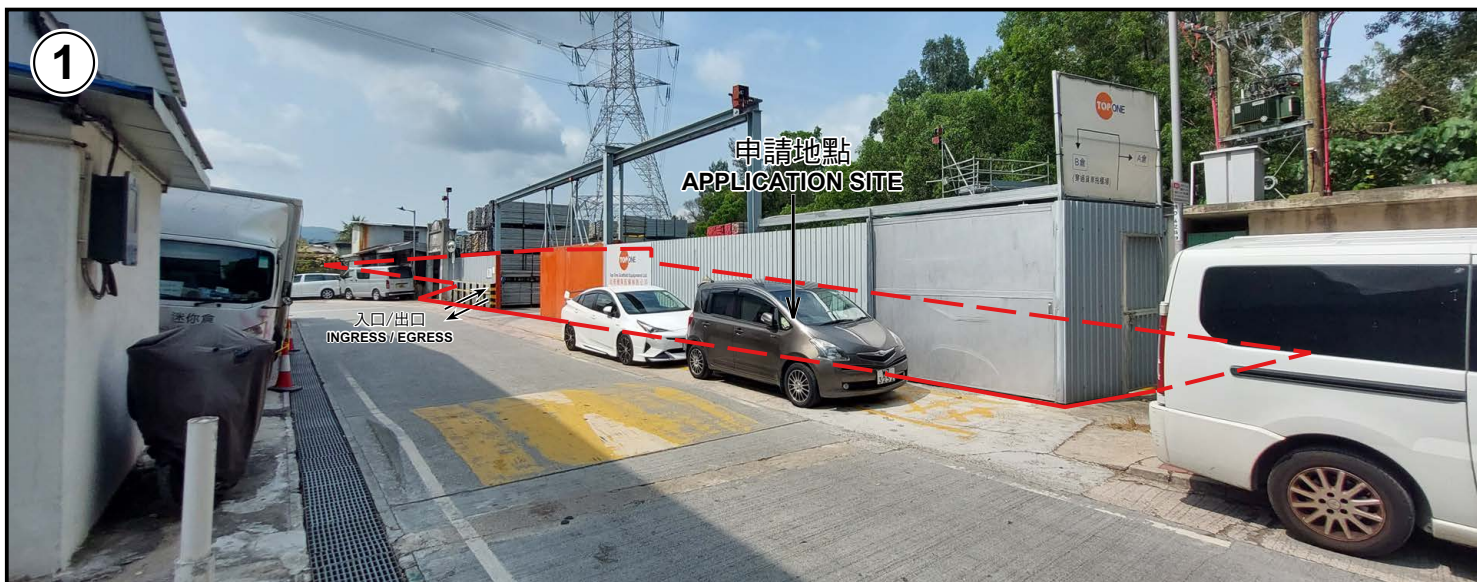
規劃署
PLANNING
DEPARTMENT



參考編號
REFERENCE No.
A/YL-KTN/825

圖 PLAN
A-3

本摘要圖於2022年9月15日擬備，
所根據的資料為地政總署於2021年1月15日
拍得的航攝照片編號E127258C
EXTRACT PLAN PREPARED ON 15.9.2022
BASED ON AERIAL PHOTO No.
E127258C TAKEN ON 15.1.2021
BY LANDS DEPARTMENT



申請地點界線只作識別用
APPLICATION SITE BOUNDARY FOR IDENTIFICATION PURPOSE ONLY

實地照片 SITE PHOTOS

本圖於2022年8月29日擬備，所根據的資料為攝於2022年4月29日的實地照片
PLAN PREPARED ON 29.8.2022
BASED ON SITE PHOTOS TAKEN ON 29.4.2022

臨時露天存放建築材料連附屬寫字樓及金屬支架示範（為期3年）
新界元朗錦田新潭路丈量約份第107約多個地段
TEMPORARY OPEN STORAGE OF CONSTRUCTION MATERIALS
WITH ANCILLARY OFFICE AND METAL SCAFFOLD DISPLAY
FOR A PERIOD OF 3 YEARS
VARIOUS LOTS IN D.D. 107 AND ADJOINING GOVERNMENT LAND,
SAN TAM ROAD, KAM TIN, YUEN LONG, N.T.

規劃署
PLANNING
DEPARTMENT



參考編號
REFERENCE No.
A/YL-KTN/825

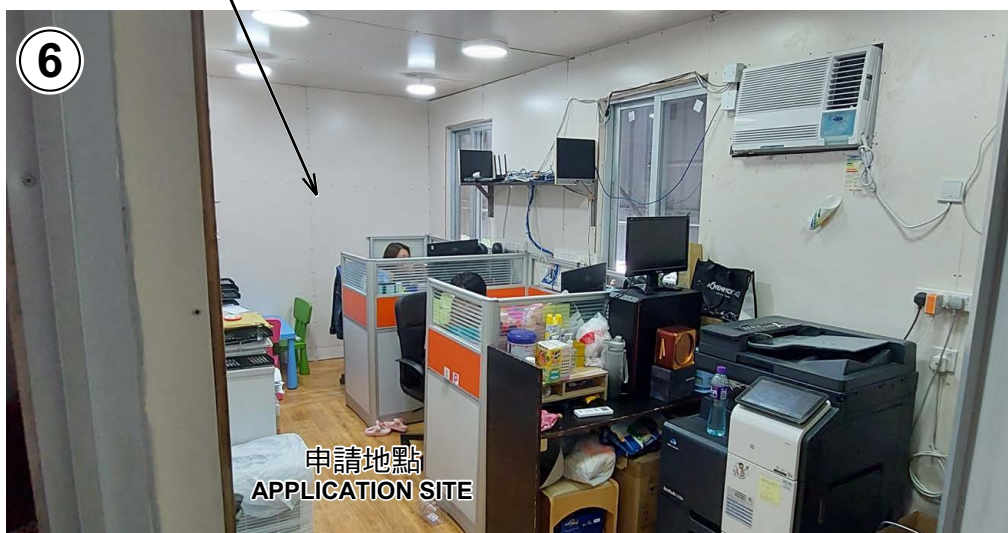
圖 PLAN
A-4a



申請地點
APPLICATION SITE



申請地點
APPLICATION SITE



申請地點
APPLICATION SITE

申請地點界線只作識別用
APPLICATION SITE BOUNDARY FOR IDENTIFICATION PURPOSE ONLY

實地照片 SITE PHOTOS

本圖於2022年8月29日擬備，所根據的資料為攝於2022年4月29日的實地照片
PLAN PREPARED ON 29.8.2022
BASED ON SITE PHOTOS TAKEN ON 29.4.2022

臨時露天存放建築材料連附屬寫字樓及金屬支架示範（為期3年）
新界元朗錦田新潭路丈量約份第107約多個地段
TEMPORARY OPEN STORAGE OF CONSTRUCTION MATERIALS
WITH ANCILLARY OFFICE AND METAL SCAFFOLD DISPLAY
FOR A PERIOD OF 3 YEARS
VARIOUS LOTS IN D.D. 107 AND ADJOINING GOVERNMENT LAND,
SAN TAM ROAD, KAM TIN, YUEN LONG, N.T.

規劃署
PLANNING
DEPARTMENT



參考編號
REFERENCE No.
A/YL-KTN/825

圖 PLAN
A-4b