

DEVELOPMENT PARAMETERS

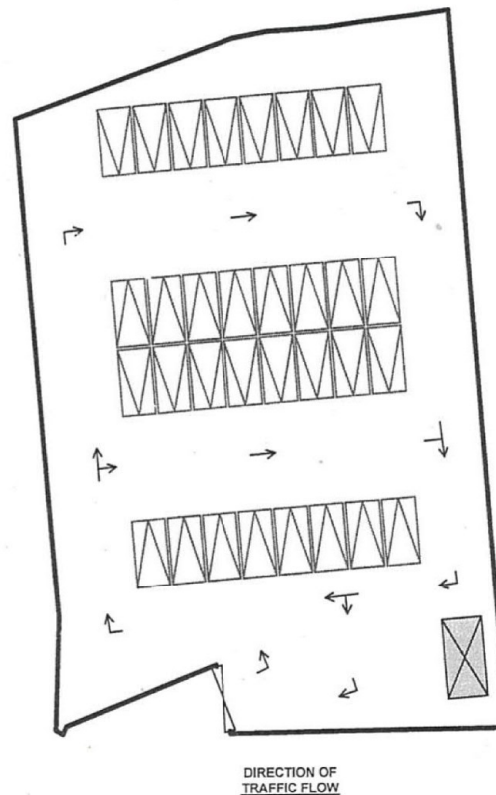
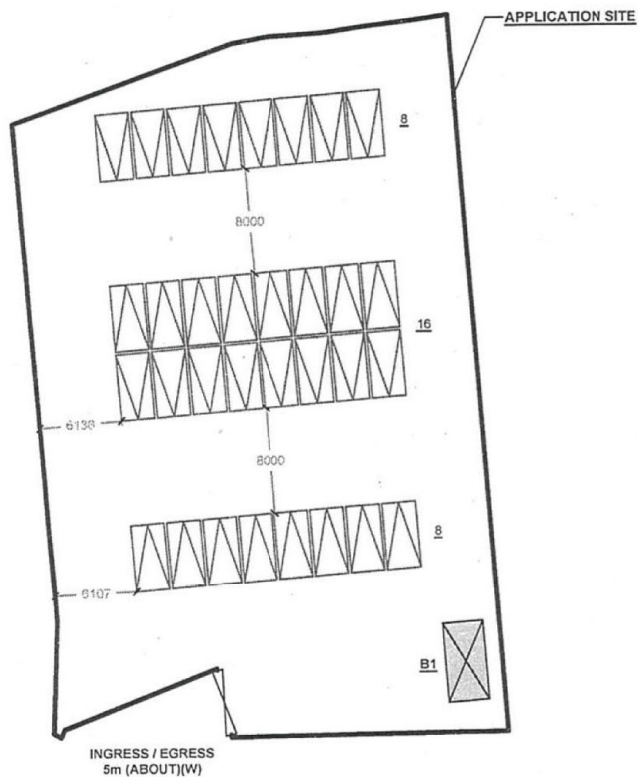
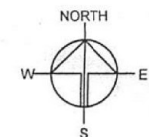
APPLICATION SITE AREA : 1,668 m² (ABOUT)
COVERED AREA : 18 m² (ABOUT)
UNCOVERED AREA : 1,650 m² (ABOUT)

PLOT RATIO : 0.01 (ABOUT)
SITE COVERAGE : 1 % (ABOUT)

NO. OF STRUCTURE : 1
DOMESTIC GFA : NOT APPLICABLE
NON-DOMESTIC GFA : 18 m² (ABOUT)
TOTAL GFA : 18 m² (ABOUT)

BUILDING HEIGHT : 3 m (ABOUT)
NO. OF STOREY : 1

STRUCTURE	USE	COVERED AREA	GFA	BUILDING HEIGHT
B1	SITE OFFICE	18m ² (ABOUT)	18m ² (ABOUT)	3m (ABOUT)(1-STOREY)
TOTAL		18m ² (ABOUT)	18m ² (ABOUT)	



PARKING PROVISIONS

NO. OF PRIVATE CAR PARKING SPACE : 32
DIMENSION OF PARKING SPACE : 5m (L) X 2.5m (W)

LEGEND

- APPLICATION SITE
- STRUCTURE
- PARKING SPACE
- INGRESS / EGRESS

PLANNING CONSULTANT

R-RICHES PROPERTY
CONSULTANTS LIMITED

PROJECT

PROPOSED TEMPORARY
PUBLIC VEHICLE PARK
(EXCLUDING CONTAINER
VEHICLE) FOR A PERIOD OF 5
YEARS

SITE LOCATION

LOTS 1750A9 (PART) AND 1905
RP (PART) IN D.D. 107, CHEUNG
CHUN SAN TSUEN, KAM TIN,
YUEN LONG, NEW TERRITORIES

SCALE

1:500 @ A4

DESIGNED BY

MN

CHECKED BY

DATE

APPROVED BY

DATE

DWG. TITLE

LAYOUT PLAN

DWG. NO.

P04

VER.

001

(摘錄自申請人於 11.5.2022 呈交的申請書)
(Extract from Applicant's
Submission of 11.5.2022)

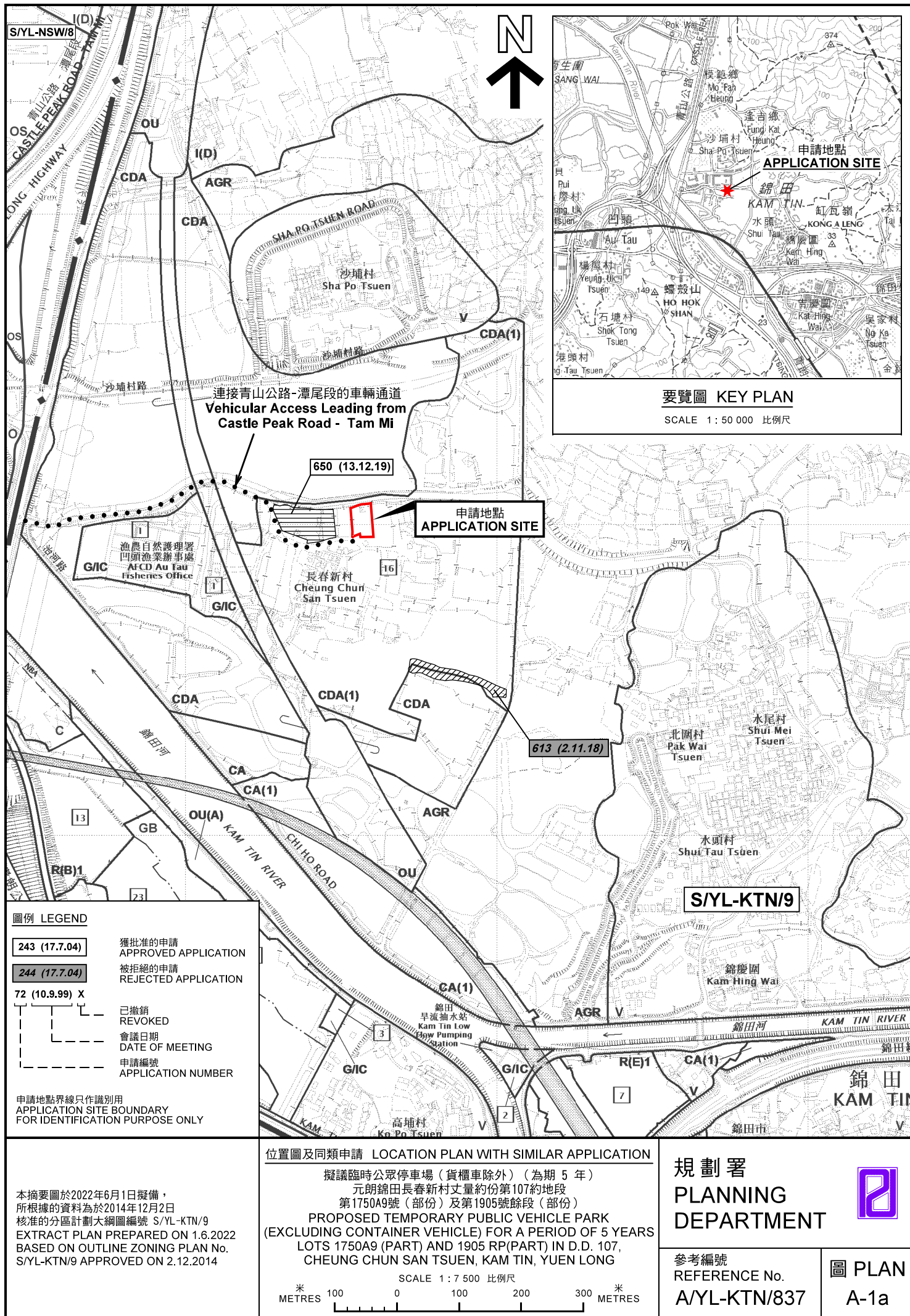
參考編號

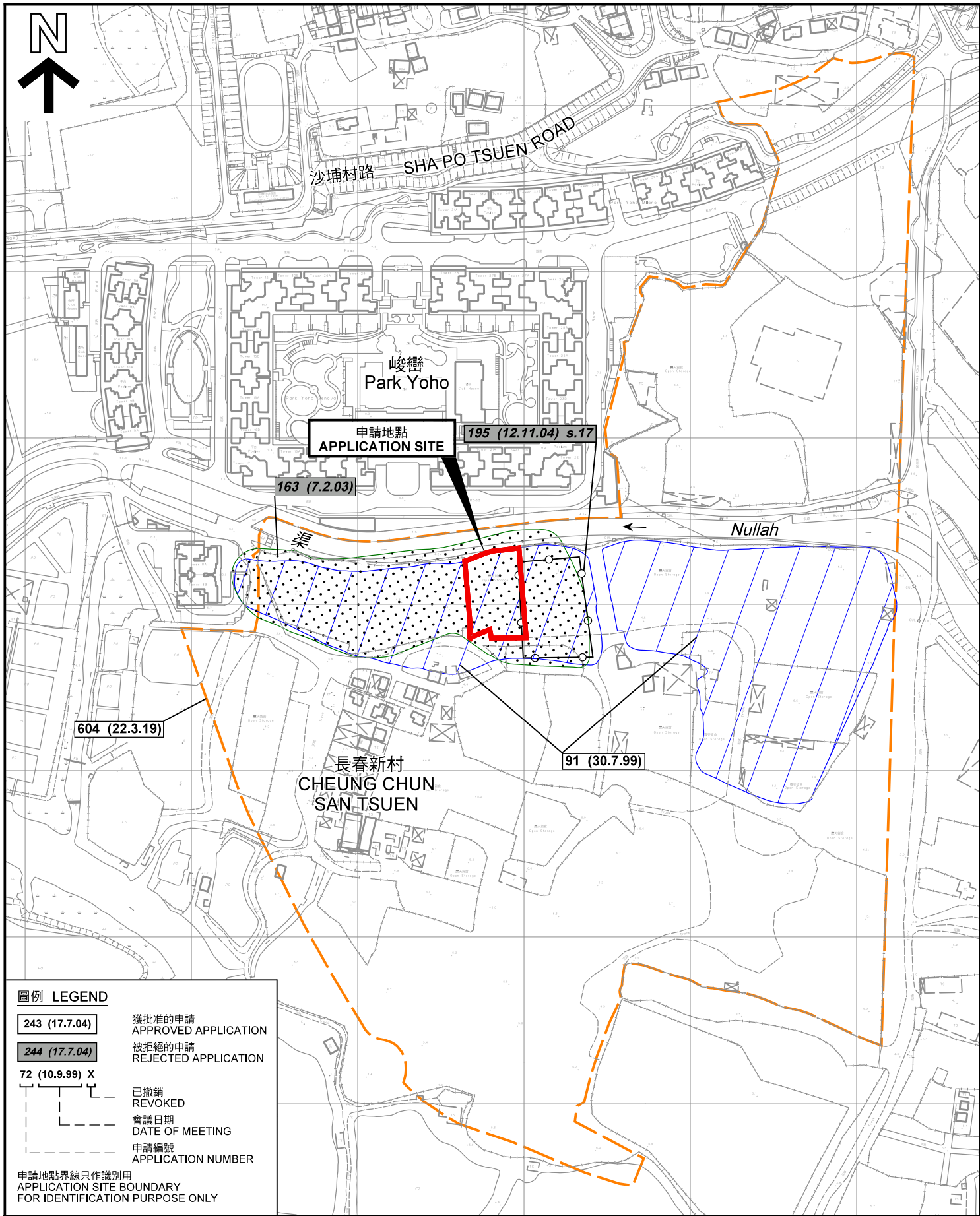
REFERENCE No.

A/YL-KTN/837

繪圖 DRAWING

A-1





先前申請圖 PREVIOUS APPLICATION PLAN

擬議臨時公眾停車場（貨櫃車除外）（為期 5 年）
元朗錦田長春新村丈量約份第107約地段
第1750A9號（部份）及第1905號餘段（部份）
PROPOSED TEMPORARY PUBLIC VEHICLE PARK
(EXCLUDING CONTAINER VEHICLE) FOR A PERIOD OF 5 YEARS
LOTS 1750A9 (PART) AND 1905 RP(PART) IN D.D. 107,
CHEUNG CHUN SAN TSUEN, KAM TIN, YUEN LONG

米 60 0 60 120 米
METRES SCALE 1 : 3 000 比例尺

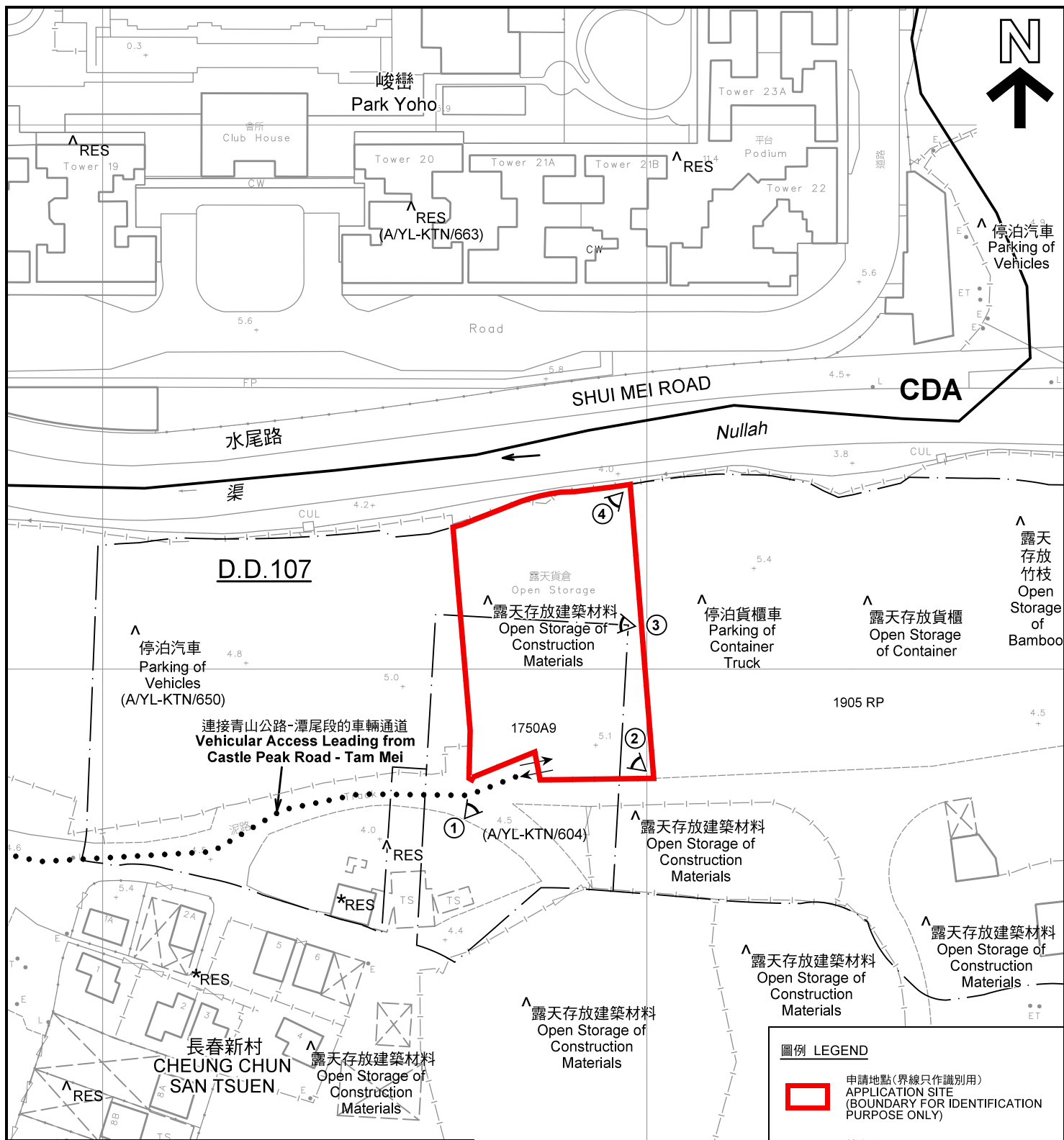
規劃署
PLANNING
DEPARTMENT



參考編號
REFERENCE No.
AYL-KTN/837

圖 PLAN
A-1b

本摘要圖於2022年6月1日擬備，
所根據的資料為測量圖編號
6-NE-6B 及 7A
EXTRACT PLAN PREPARED ON 1.6.2022
BASED ON SURVEY SHEETS No.
6-NE-6B & 7A



註釋 Notes:

- (1) 2022年5月20日勘測的土地用途
Land uses shown on this plan are in accordance with the land use survey conducted by the Planning Department on 20.5.2022
- (2) * 土地用途跟1992年2月勘測的土地用途一致
Indicates that the use is the same as that revealed by the land use survey conducted by the Planning Department in Feb 1992
- (3) ^ 土地用途跟1992年2月勘測的土地用途有別
Indicates that the use is different from that revealed by the land use survey conducted by the Planning Department in Feb 1992

圖例 LEGEND

- 申請地點(界線只作識別用)
APPLICATION SITE
(BOUNDARY FOR IDENTIFICATION
PURPOSE ONLY)
- CDA** 綜合發展區
COMPREHENSIVE DEVELOPMENT
AREA
- RES** 住用構築物
RESIDENTIAL STRUCTURES
- 實地照片的觀景點
VIEWING POINT OF SITE PHOTO
- 入口/出口
INGRESS / EGRESS

平面圖 SITE PLAN

擬議臨時公眾停車場(貨櫃車除外)(為期5年)
元朗錦田長春新村丈量約份第107約地段
第1750A9號(部份)及第1905號餘段(部份)
PROPOSED TEMPORARY PUBLIC VEHICLE PARK
(EXCLUDING CONTAINER VEHICLE) FOR A PERIOD OF 5 YEARS
LOTS 1750A9 (PART) AND 1905 RP(PART) IN D.D. 107,
CHEUNG CHUN SAN TSUEN, KAM TIN, YUEN LONG

SCALE 1:1 000 比例尺

米 20 0 20 40 米
METRES

規劃署
PLANNING
DEPARTMENT



參考編號
REFERENCE No.
A/YL-KTN/837

圖 PLAN
A-2

本摘要圖於2022年6月15日擬備, 所根據的
資料為測量圖編號 6-NE-6B
EXTRACT PLAN PREPARED ON 15.6.2022
BASED ON SURVEY SHEET No.
6-NE-6B



圖例 LEGEND



申請地點(界線只作識別用)
APPLICATION SITE
(BOUNDARY FOR IDENTIFICATION
PURPOSE ONLY)

本摘要圖於2022年6月1日擬備，所根據
的資料為地政總署於2021年1月19日拍得
的航攝照片編號 E131275C
EXTRACT PLAN PREPARED ON 1.6.2022
BASED ON AERIAL PHOTO No.
E131275C TAKEN ON 19.1.2021
BY LANDS DEPARTMENT

航攝照片 AERIAL PHOTO

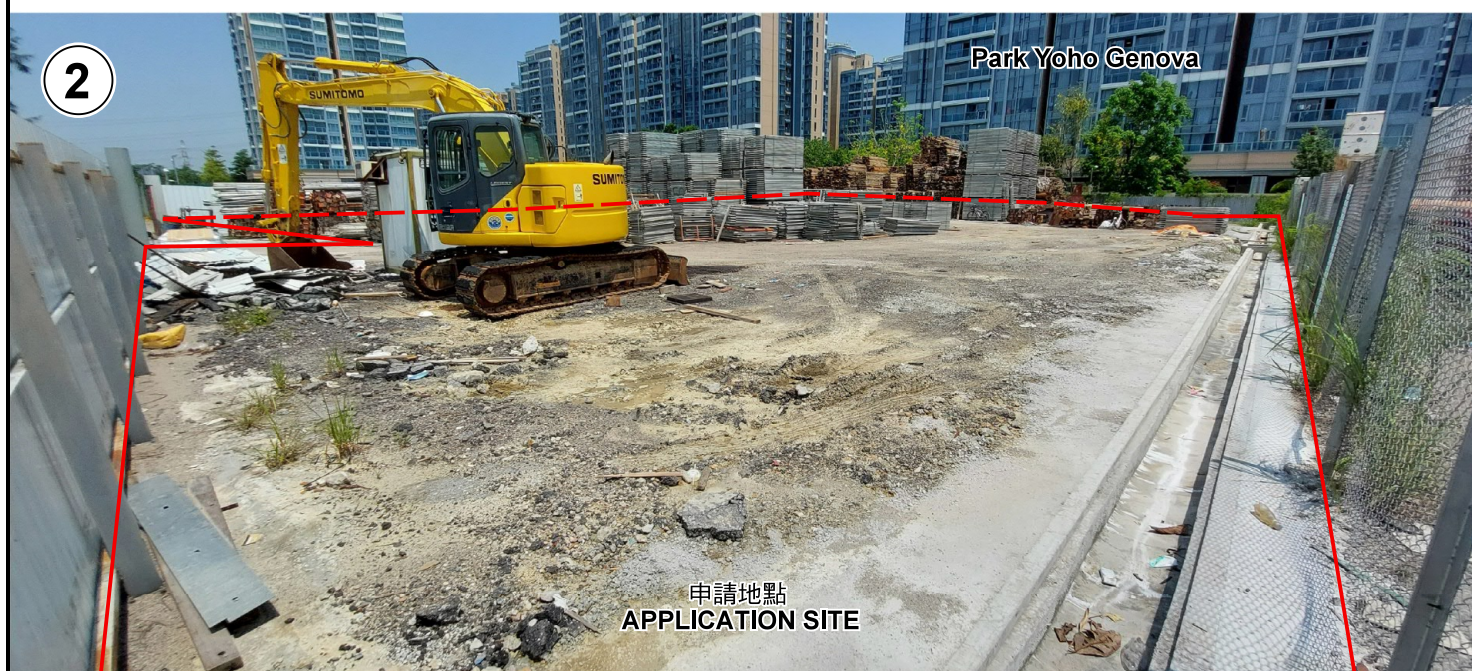
擬議臨時公眾停車場（貨櫃車除外）（為期 5 年）
元朗錦田長春新村丈量約份第107約地段
第1750A9號（部份）及第1905號餘段（部份）
PROPOSED TEMPORARY PUBLIC VEHICLE PARK
(EXCLUDING CONTAINER VEHICLE) FOR A PERIOD OF 5 YEARS
LOTS 1750A9 (PART) AND 1905 RP(PART) IN D.D. 107,
CHEUNG CHUN SAN TSUEN, KAM TIN, YUEN LONG

規劃署
PLANNING
DEPARTMENT



參考編號
REFERENCE No.
A/YL-KTN/837

圖 PLAN
A-3



申請地點界線只作識別用 APPLICATION SITE BOUNDARY FOR IDENTIFICATION PURPOSE ONLY

實地照片 SITE PHOTOS

本圖於2022年6月6日擬備，所根據的資料為攝於2022年5月20日的實地照片
PLAN PREPARED ON 6.6.2022
BASED ON SITE PHOTOS
TAKEN ON 20.5.2022

擬議臨時公眾停車場（貨櫃車除外）（為期 5 年）
元朗錦田長春新村丈量約份第107約地段
第1750A9號（部份）及第1905號餘段（部份）
PROPOSED TEMPORARY PUBLIC VEHICLE PARK
(EXCLUDING CONTAINER VEHICLE) FOR A PERIOD OF 5 YEARS
LOTS 1750A9 (PART) AND 1905 RP(PART) IN D.D. 107,
CHEUNG CHUN SAN TSUEN, KAM TIN, YUEN LONG

規劃署
PLANNING
DEPARTMENT



參考編號
REFERENCE No.
A/YL-KTN/837

圖 PLAN
A-4a



申請地點界線只作識別用 APPLICATION SITE BOUNDARY FOR IDENTIFICATION PURPOSE ONLY

實地照片 SITE PHOTOS

本圖於2022年6月6日擬備，所根據的資料為攝於2022年5月20日的實地照片
PLAN PREPARED ON 6.6.2022
BASED ON SITE PHOTOS
TAKEN ON 20.5.2022

擬議臨時公眾停車場（貨櫃車除外）（為期 5 年）
元朗錦田長春新村丈量約份第107約地段
第1750A9號（部份）及第1905號餘段（部份）
PROPOSED TEMPORARY PUBLIC VEHICLE PARK
(EXCLUDING CONTAINER VEHICLE) FOR A PERIOD OF 5 YEARS
LOTS 1750A9 (PART) AND 1905 RP(PART) IN D.D. 107,
CHEUNG CHUN SAN TSUEN, KAM TIN, YUEN LONG

規劃署
PLANNING
DEPARTMENT



參考編號
REFERENCE No.
A/YL-KTN/837

圖 PLAN
A-4b