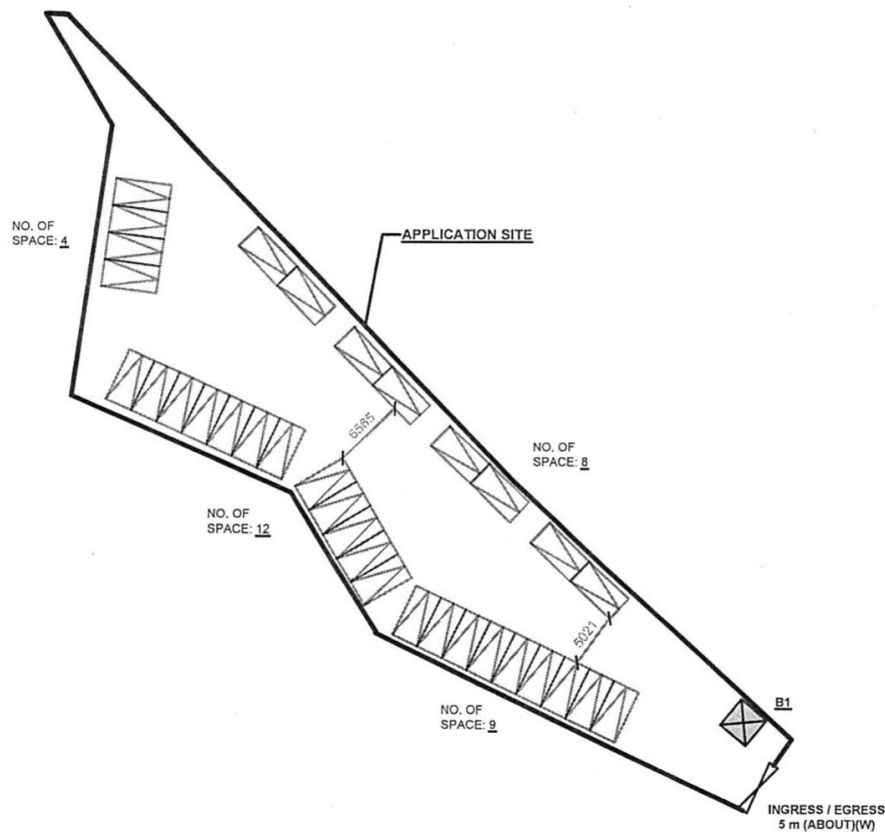
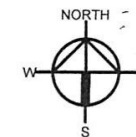


DEVELOPMENT PARAMETERS

APPLICATION SITE AREA	: 1,325	m ² (ABOUT)
COVERED AREA	: 9	m ² (ABOUT)
UNCOVERED AREA	: 1,316	m ² (ABOUT)
PLOT RATIO	: 0.01	(ABOUT)
SITE COVERAGE	: 1	% (ABOUT)
NO. OF STRUCTURE	: 1	
DOMESTIC GFA	: NOT APPLICABLE	
NON-DOMESTIC GFA	: 9	m ² (ABOUT)
TOTAL GFA	: 9	m ² (ABOUT)
BUILDING HEIGHT	: 3	m (ABOUT)
NO. OF STOREY	: 1	

STRUCTURE	USE	COVERED AREA	GFA	BUILDING HEIGHT
B1	SITE OFFICE	9m ² (ABOUT)	9m ² (ABOUT)	3m (ABOUT)(1-STORY)
TOTAL		9m ² (ABOUT)	9m ² (ABOUT)	



PARKING PROVISIONS

NO. OF PRIVATE CAR PARKING SPACE	: 33
DIMENSION OF PARKING SPACE	: 5m (L) X 2.5m (W)

LEGEND

	APPLICATION SITE
	STRUCTURE
	PARKING SPACE
	INGRESS / EGRESS

PLANNING CONSULTANT

R-RICHES PROPERTY
CONSULTANTS LIMITED

PROJECT

PROPOSED TEMPORARY
PUBLIC VEHICLE PARK
(EXCLUDING CONTAINER
VEHICLE) FOR A PERIOD OF 5
YEARS

SITE LOCATION

LOTS 1845 RP AND 1846 RP IN
D.D. 107, KAM TIN, YUEN LONG,
NEW TERRITORIES

SCALE

1:500 @ A4

DRAWN BY	DATE
MN	13.6.2022
CHECKED BY	DATE
APPROVED BY	DATE

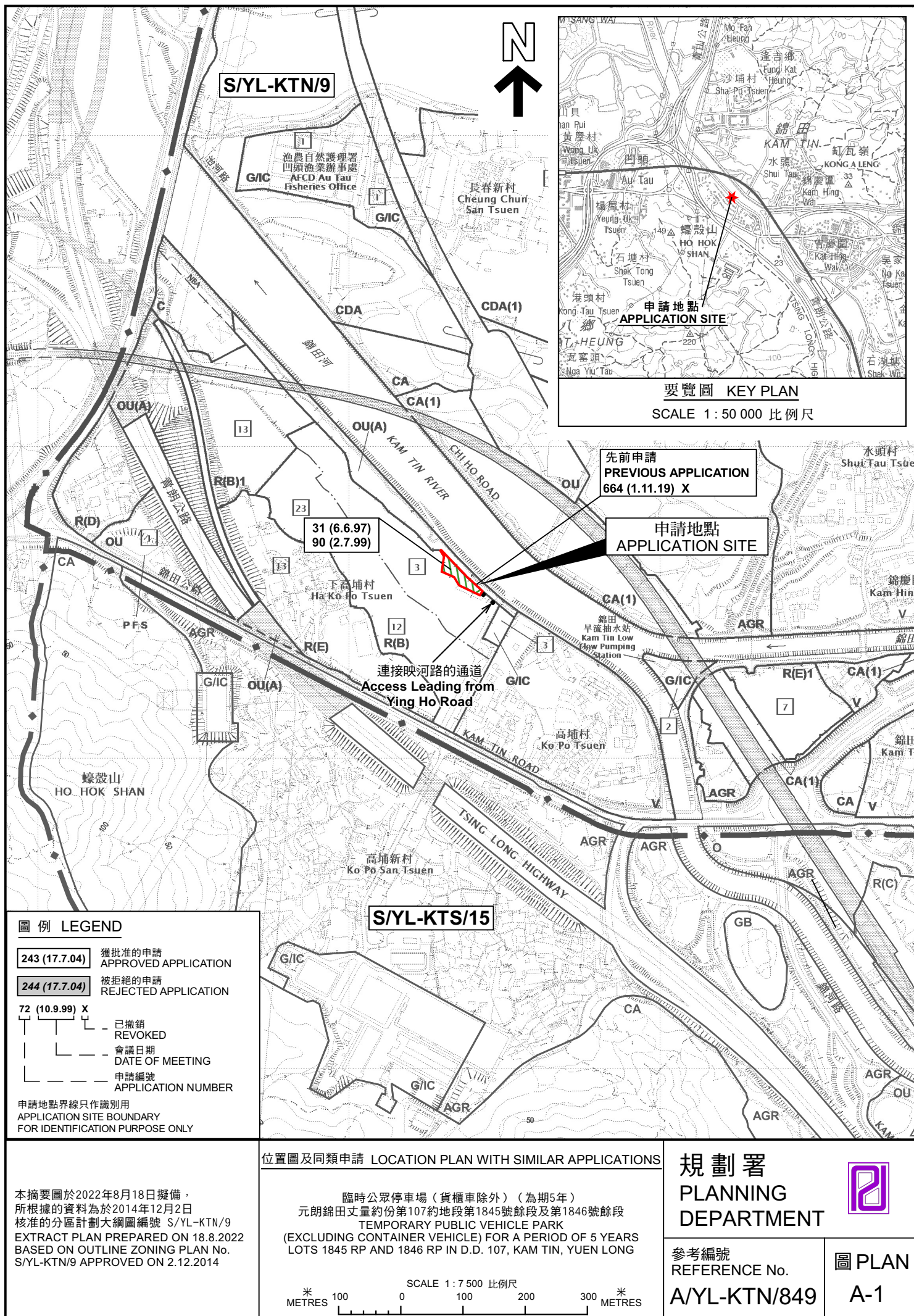
DWG. TITLE
LAYOUT PLAN

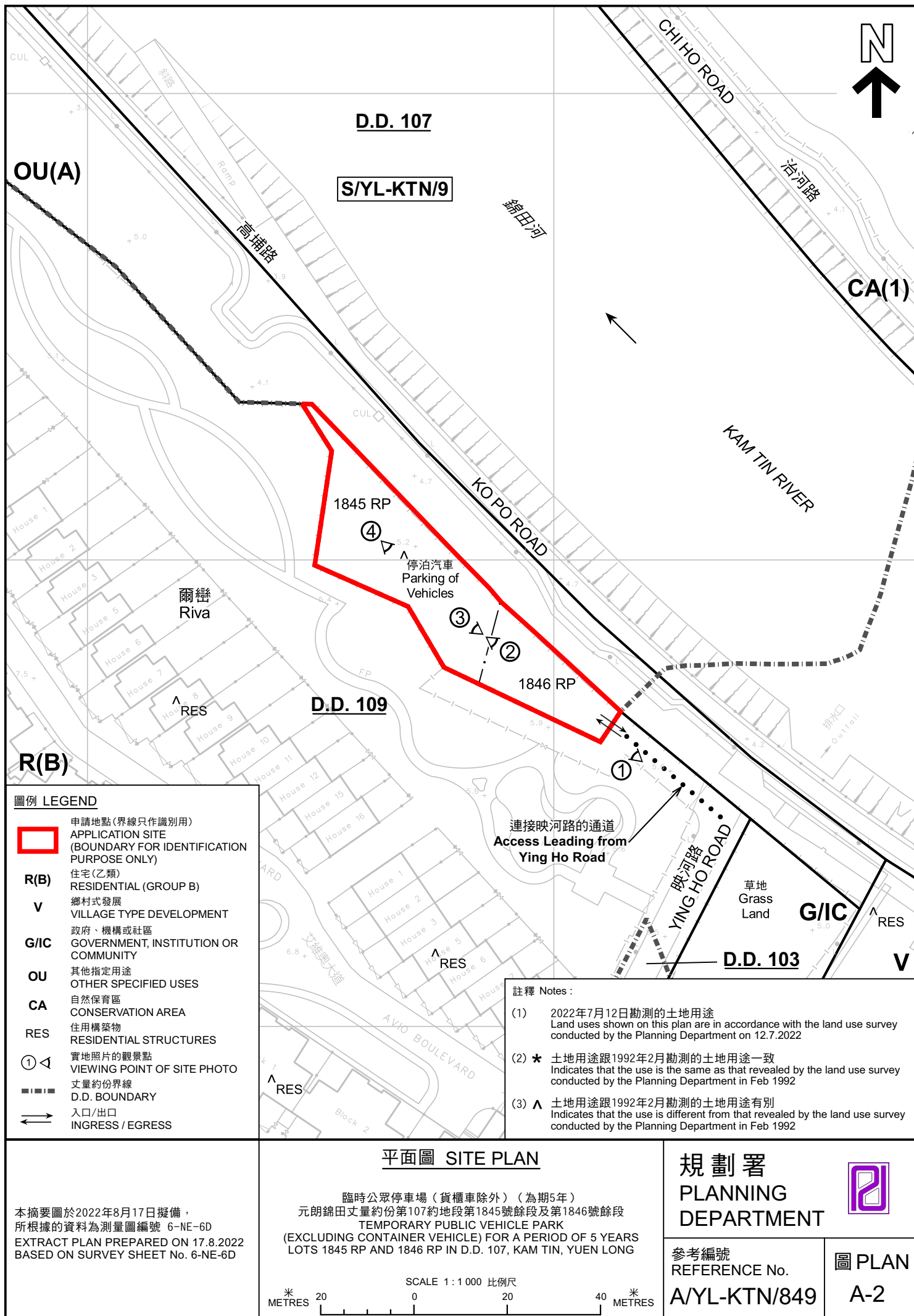
DWG NO.	VER
P04	001

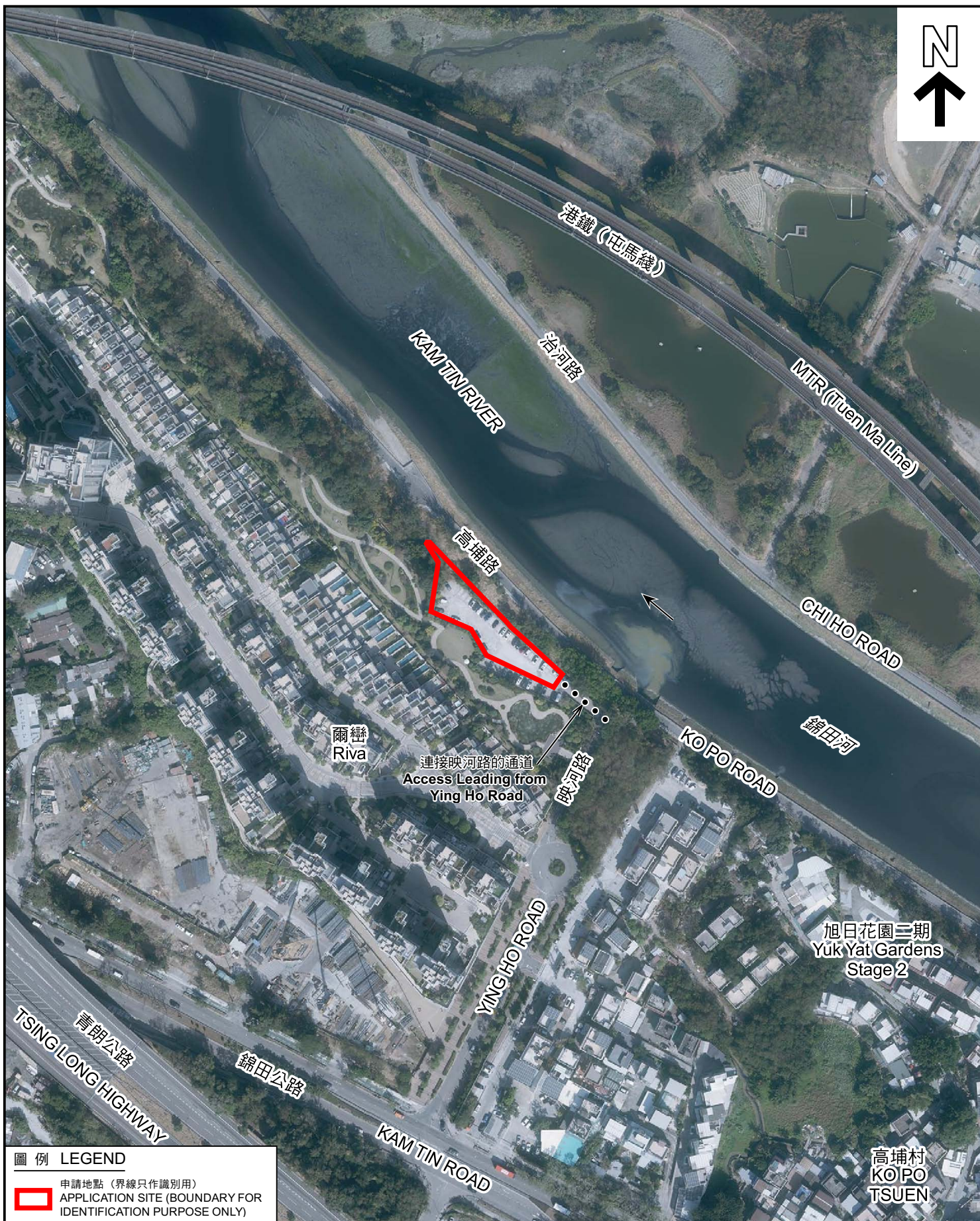
(摘錄自申請人於 4.7.2022 呈交的申請書)
(Extract from Applicant's
Submission of 4.7.2022)

參考編號
REFERENCE No.
A/YL-KTN/849

繪圖
DRAWING
A - 1







圖例 LEGEND



申請地點 (界線只作識別用)
APPLICATION SITE (BOUNDARY FOR
IDENTIFICATION PURPOSE ONLY)

航攝照片 AERIAL PHOTO

本摘要圖於2022年8月17日擬備，
所根據的資料為地政總署於2021年1月19日
拍得的航攝照片編號 E130834C
EXTRACT PLAN PREPARED ON 17.8.2022
BASED ON AERIAL PHOTO No.
E130834C TAKEN ON 19.1.2021
BY LANDS DEPARTMENT

臨時公眾停車場 (貨櫃車除外) (為期5年)
元朗錦田丈量約份第107約地段第1845號餘段及第1846號餘段
TEMPORARY PUBLIC VEHICLE PARK
(EXCLUDING CONTAINER VEHICLE) FOR A PERIOD OF 5 YEARS
LOTS 1845 RP AND 1846 RP IN D.D. 107, KAM TIN, YUEN LONG

規劃署
PLANNING
DEPARTMENT



參考編號
REFERENCE No.
A/YL-KTN/849

圖 PLAN
A-3



申請地點界線只作識別用 APPLICATION SITE BOUNDARY FOR IDENTIFICATION PURPOSE ONLY

實地照片 SITE PHOTOS

本圖於2022年8月9日擬備，所根據的資料為攝於2022年7月12日的實地照片
PLAN PREPARED ON 9.8.2022
BASED ON SITE PHOTOS
TAKEN ON 12.7.2022

臨時公眾停車場（貨櫃車除外）（為期5年）
元朗錦田丈量約份第107約地段第1845號餘段及第1846號餘段
TEMPORARY PUBLIC VEHICLE PARK
(EXCLUDING CONTAINER VEHICLE) FOR A PERIOD OF 5 YEARS
LOTS 1845 RP AND 1846 RP IN D.D. 107, KAM TIN, YUEN LONG

規劃署
PLANNING
DEPARTMENT



參考編號
REFERENCE No.
A/YL-KTN/849

圖 PLAN
A-4