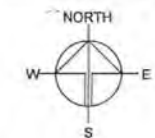


# DEVELOPMENT PARAMETERS

APPLICATION SITE AREA	: 2,366 m <sup>2</sup>	(ABOUT)
COVERED AREA	: 868 m <sup>2</sup>	(ABOUT)
UNCOVERED AREA	: 1,498 m <sup>2</sup>	(ABOUT)
PLOT RATIO	: 0.37	(ABOUT)
SITE COVERAGE	: 37 %	(ABOUT)
NO. OF STRUCTURE	: 5	
DOMESTIC GFA	: NOT APPLICABLE	
NON-DOMESTIC GFA	: 868 m <sup>2</sup>	(ABOUT)
TOTAL GFA	: 868 m <sup>2</sup>	(ABOUT)
BUILDING HEIGHT	: 3.5 m	(ABOUT)
NO. OF STOREY	: 1	

STRUCTURE	USE	COVERED AREA	GFA	BUILDING HEIGHT
B1	ANIMAL BOARDING ESTABLISHMENT	216 m <sup>2</sup> (ABOUT)	216 m <sup>2</sup> (ABOUT)	3.5 m (ABOUT)(1-STOREY)
B2	ANIMAL BOARDING ESTABLISHMENT	216 m <sup>2</sup> (ABOUT)	216 m <sup>2</sup> (ABOUT)	3.5 m (ABOUT)(1-STOREY)
B3	ANIMAL BOARDING ESTABLISHMENT	216 m <sup>2</sup> (ABOUT)	216 m <sup>2</sup> (ABOUT)	3.5 m (ABOUT)(1-STOREY)
B4	STORAGE OF ANIMAL SUPPLIES	110 m <sup>2</sup> (ABOUT)	110 m <sup>2</sup> (ABOUT)	3.5 m (ABOUT)(1-STOREY)
B5	SITE OFFICE, WASHROOM AND METER ROOM	110 m <sup>2</sup> (ABOUT)	110 m <sup>2</sup> (ABOUT)	3.5 m (ABOUT)(1-STOREY)
TOTAL		868 m <sup>2</sup> (ABOUT)	868 m <sup>2</sup> (ABOUT)	



LEGEND	
[Symbol]	APPLICATION SITE
[Symbol]	STRUCTURE
[Symbol]	PARKING SPACE
[Symbol]	LOADING / UNLOADING SPACE
[Symbol]	INGRESS / EGRESS

## PARKING AND LOADING / UNLOADING PROVISIONS

NO. OF PRIVATE CAR PARKING SPACE	: 3
DIMENSION OF PARKING SPACE	: 5 m (L) x 2.5 m (W)
NO. OF LUL SPACE FOR LIGHT GOODS VEHICLE	: 1
DIMENSION OF LUL SPACE	: 7 m (L) x 3.5 m (W)

PLANNING CONSULTANT



PROJECT

PROPOSED TEMPORARY ANIMAL BOARDING ESTABLISHMENT WITH ANCILLARY FACILITIES FOR A PERIOD OF 5 YEARS AND ASSOCIATED FILLING OF LAND

SITE LOCATION

VARIOUS LOTS IN D.D. 107, KAM TIN, YUEN LONG, NEW TERRITORIES

SCALE

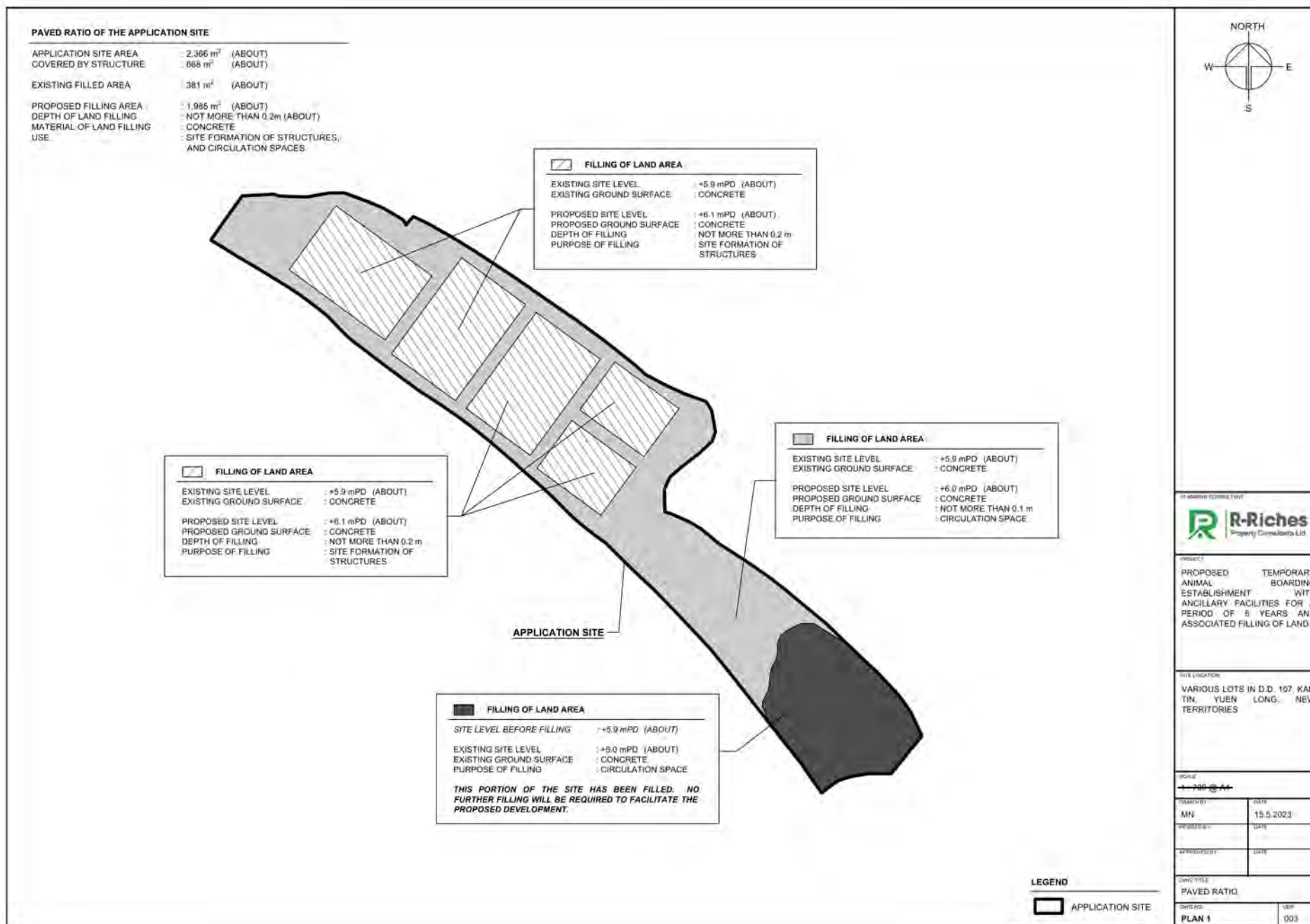
1:786 @ A4

DRAWN BY	DATE
MIN	27.2.2023
REVIEWED BY	DATE
APPROVED BY	DATE
ENGR. TITLE	
LAYOUT PLAN	
ENGR. NO.	VEIL

(摘錄自申請人於 27.3.2023 呈交的申請書)  
(Extract from Applicant's Submission of 27.3.2023)

參考編號  
REFERENCE No.  
A/YL-KTN/903

繪圖  
DRAWING  
A - 1

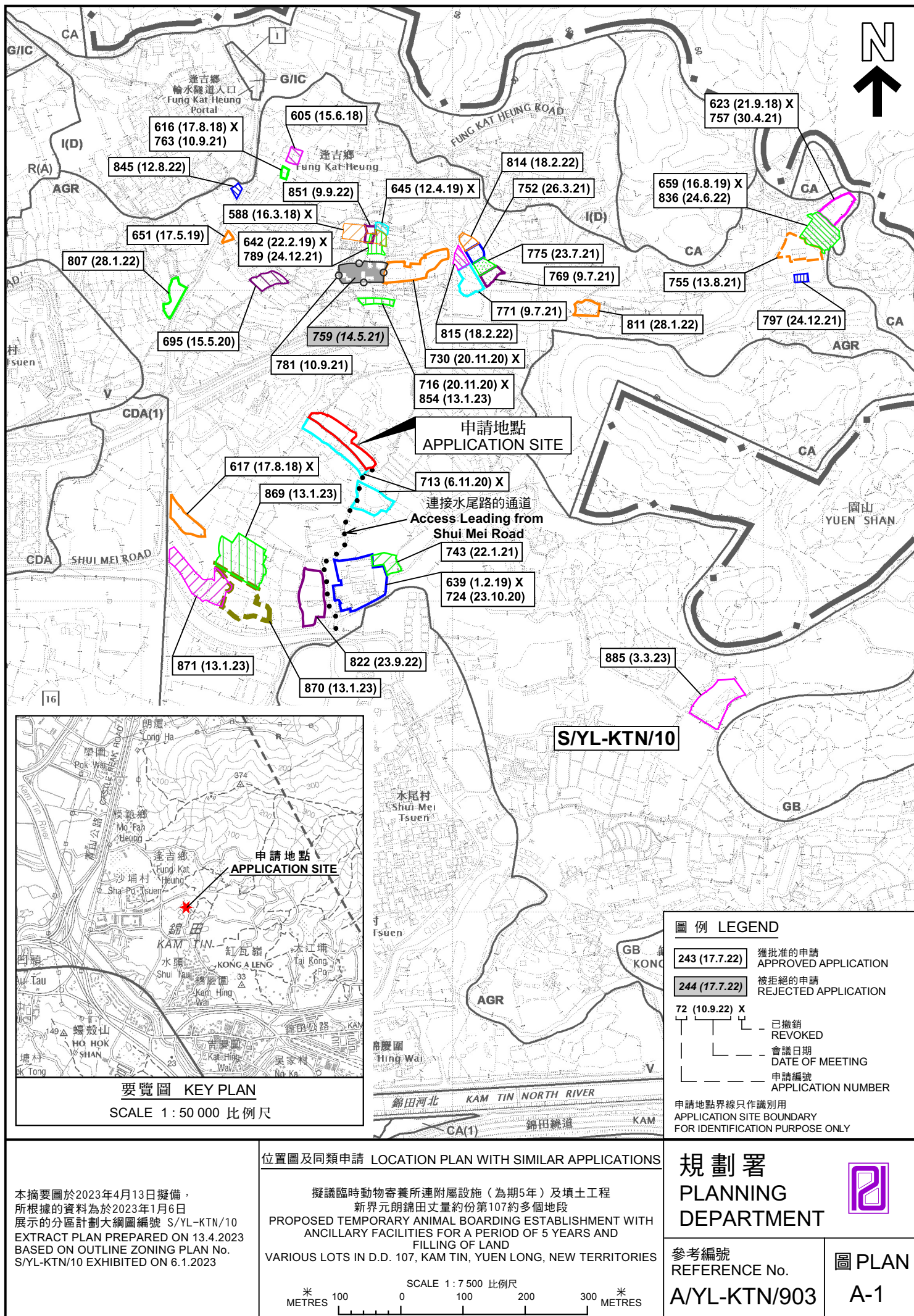


(摘錄自申請人於15. 5. 2023呈交的進一步資料)  
(Extract from Applicant's Further  
Information Submitted on 15.5.2023)

參考編號  
REFERENCE No.  
A/YL-KTN/903

繪圖  
DRAWING  
A - 2





(A/YL-KTN/806)

**S/YL-KTN/10**

N  
↑

Pond

草地  
Grassland

草地  
Grassland

住宅/貯物  
RES / Storage

^  
露天存放  
Open Storage

1446

1447

空置  
Vacant

Λ 露天存放  
Open Storage

^ 存放汽車  
Storage of Vehicles

住宅/貯物  
RES / Storage

草地  
Grassland

## Storage of Vehicles

連接水尾路的通道  
Access Leading from  
Shui Mei Road

強制執行案件號碼  
ENFORCEMENT CASE No.  
E/YL-KTN/642

*Pond*

(A/YL-KTN/782)

註釋 Notes :

- (1) 2023年3月31日勘测的土地用途  
Land uses shown on this plan are in accordance with the land use survey conducted by the Planning Department on 31.3.2023
- (2) ★ 土地用途跟1992年2月勘测的土地用途一致  
Indicates that the use is the same as that revealed by the land use survey conducted by the Planning Department in Feb 1992
- (3) ▲ 土地用途跟1992年2月勘测的土地用途有別  
Indicates that the use is different from that revealed by the land use survey conducted by the Planning Department in Feb 1992

圖例 LEGEND



申請地點(界線只作識別用)  
APPLICATION SITE  
(BOUNDARY FOR IDENTIFICATION  
PURPOSE ONLY)

**AGR**

農業  
AGRICULTURE

RES

住用構築物  
RESIDENTIAL STRUCTURES

A/C

常耕農地  
CULTIVATED AGRICULTURAL LAND

①  $\angle$ 

實地照片的觀景點  
VIEWING POINT OF SITE PHOTO



入口/出口  
INGRESS / EGRESS

平面圖 SITE PLAN

本摘要圖於2023年5月11日擬備，  
所根據的資料為測量圖編號  
6-NE-2C 及 6-NE-7A

EXTRACT PLAN PREPARED ON 11.5.2023  
BASED ON SURVEY SHEETS No.  
6-NE-2C & 6-NE-7A

擬議臨時動物寄養所連附屬設施（為期5年）及填土工程  
新界元朗錦田丈量約份第107約多個地段  
PROPOSED TEMPORARY ANIMAL BOARDING ESTABLISHMENT WITH  
ANCILLARY FACILITIES FOR A PERIOD OF 5 YEARS AND  
FILLING OF LAND  
VARIOUS LOTS IN D.D. 107, KAM TIN, YUEN LONG, NEW TERRITORIES

SCALE 1 : 1 000 比例尺

米 20 0 20 40 米  
METRES METRES

規劃署  
PLANNING  
DEPARTMENT



參考編號  
REFERENCE No.  
A/YL-KTN/903

PLAN  
A-2





#### 圖例 LEGEND



申請地點 (界線只作識別用)  
APPLICATION SITE (BOUNDARY FOR  
IDENTIFICATION PURPOSE ONLY)

本摘要圖於2023年4月13日擬備，  
所根據的資料為地政總署於2022年2月14日  
拍得的航攝照片編號 E148072C  
EXTRACT PLAN PREPARED ON 13.4.2023  
BASED ON AERIAL PHOTO No.  
E148072C TAKEN ON 14.2.2022  
BY LANDS DEPARTMENT

#### 航攝照片 AERIAL PHOTO

擬議臨時動物寄養所連附屬設施（為期5年）及填土工程  
新界元朗錦田丈量約份第107約多個地段  
PROPOSED TEMPORARY ANIMAL BOARDING ESTABLISHMENT WITH  
ANCILLARY FACILITIES FOR A PERIOD OF 5 YEARS AND  
FILLING OF LAND  
VARIOUS LOTS IN D.D. 107, KAM TIN, YUEN LONG, NEW TERRITORIES

規劃署  
PLANNING  
DEPARTMENT



參考編號  
REFERENCE No.  
A/YL-KTN/903

圖 PLAN  
A-3





申請地點界線只作識別用 APPLICATION SITE BOUNDARY FOR IDENTIFICATION PURPOSE ONLY

### 實地照片 SITE PHOTOS

本圖於2023年4月24日擬備，所根據的資料為攝於2023年3月31日的實地照片  
PLAN PREPARED ON 24.4.2023  
BASED ON SITE PHOTOS  
TAKEN ON 31.3.2023

擬議臨時動物寄養所連附屬設施（為期5年）及填土工程  
新界元朗錦田丈量約份第107約多個地段  
PROPOSED TEMPORARY ANIMAL BOARDING ESTABLISHMENT WITH  
ANCILLARY FACILITIES FOR A PERIOD OF 5 YEARS AND  
FILLING OF LAND  
VARIOUS LOTS IN D.D. 107, KAM TIN, YUEN LONG, NEW TERRITORIES

規劃署  
PLANNING  
DEPARTMENT



參考編號  
REFERENCE No.  
A/YL-KTN/903

圖 PLAN  
A-4