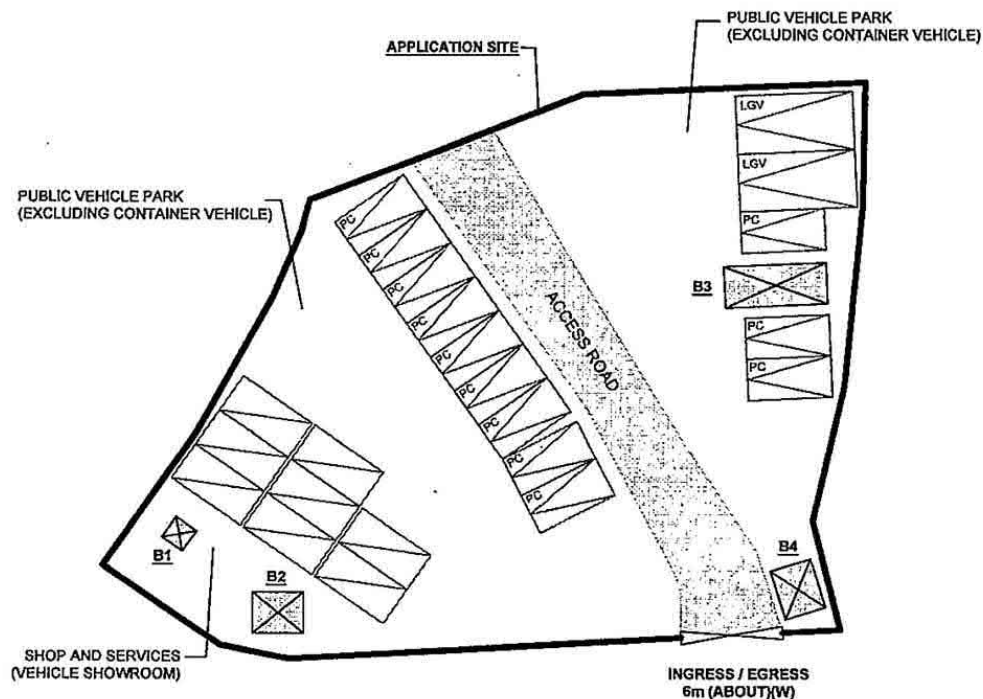
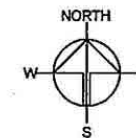


DEVELOPMENT PARAMETERS

APPLICATION SITE AREA	: 1,178 m ²	(ABOUT)
COVERED AREA	: 34 m ²	(ABOUT)
UNCOVERED AREA	: 1,144 m ²	(ABOUT)
PLOT RATIO	: 0.03	(ABOUT)
SITE COVERAGE	: 2.8 %	(ABOUT)
NO. OF STRUCTURE	: 4	
DOMESTIC GFA	: NOT APPLICABLE	
NON-DOMESTIC GFA	: 34 m ²	(ABOUT)
TOTAL GFA	: 34 m ²	(ABOUT)
BUILDING HEIGHT	: 3 m	(ABOUT)
NO. OF STOREY	: 1	

STRUCTURE	USE	COVERED AREA	GFA	BUILDING HEIGHT
B1	SITE OFFICE	3 m ² (ABOUT)	3 m ² (ABOUT)	3 m (ABOUT) (1-STOREY)
B2	SHOP AND SERVICES	6 m ² (ABOUT)	6 m ² (ABOUT)	3 m (ABOUT) (1-STOREY)
B3	SITE OFFICE	15 m ² (ABOUT)	15 m ² (ABOUT)	3 m (ABOUT) (1-STOREY)
B4	GUARDHOUSE	8 m ² (ABOUT)	8 m ² (ABOUT)	3 m (ABOUT) (1-STOREY)
TOTAL		34 m ² (ABOUT)	34 m ² (ABOUT)	



PARKING PROVISIONS

NO. OF PRIVATE CAR PARKING SPACE	: 12
DIMENSION OF PARKING SPACE	: 2.5m (W) X 5m (L)
NO. OF LIGHT GOODS VEHICLE PARKING SPACE	: 2
DIMENSION OF LUL SPACE	: 3.5m (W) X 7m (L)

LEGEND

	APPLICATION SITE
	STRUCTURE
	PARKING SPACE (PC)
	PARKING SPACE (LGV)
	SPACE FOR DISPLAYING VEHICLE
	INGRESS / EGRESS

PLANNING CONSULTANT



PROJECT

TEMPORARY SHOP AND SERVICES AND PUBLIC VEHICLE PARK (EXCLUDING CONTAINER VEHICLE) WITH ANCILLARY FACILITIES FOR A PERIOD OF 5 YEARS

SITE LOCATION

LOTS 171 S.A.R.P. (PART) AND 171 S.B. (PART) IN D.D. 108, KAM HING WAI, KAM TIN, YUEN LONG, NEW TERRITORIES

SCALE

1:400 @ A4

DRAWN BY

MN

DATE

1.8.2023

REVIEWED BY

DATE

APPROVED BY

DATE

DWG. TITLE

LAYOUT PLAN

DWG. NO.

PLAN 4

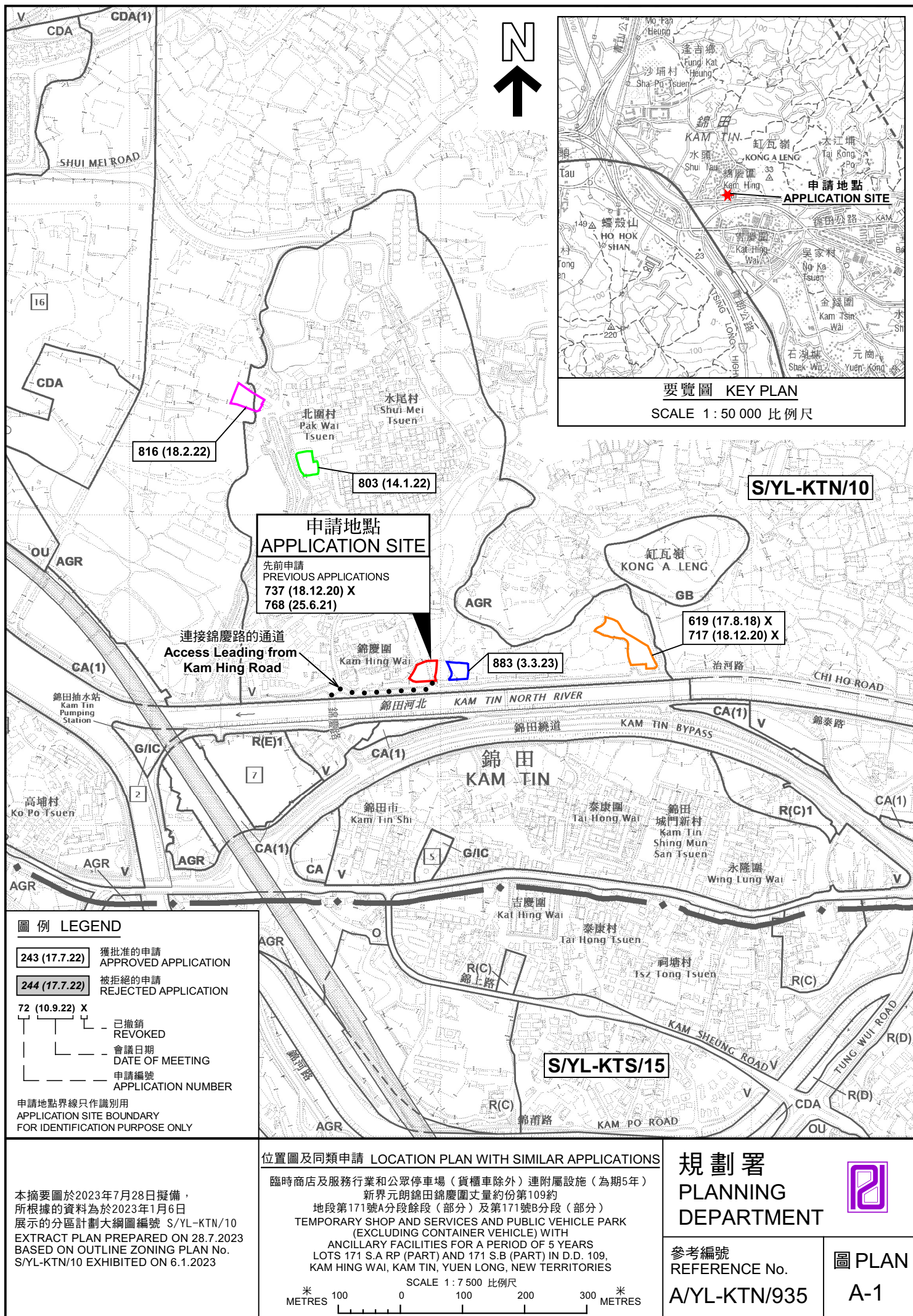
VER.

001

(摘錄自申請人於 23.6.2023 呈交的申請書)
(Extract from Applicant's
Submission of 23.6.2023)

參考編號
REFERENCE No.
A/YL-KTN/935

繪圖
DRAWING
A - 1



本摘要圖於2023年7月28日擬備，所根據的資料為於2023年1月6日展示的分區計劃大綱圖編號 S/YL-KTN/10 EXTRACT PLAN PREPARED ON 28.7.2023 BASED ON OUTLINE ZONING PLAN No. S/YL-KTN/10 EXHIBITED ON 6.1.2023

位置圖及同類申請 LOCATION PLAN WITH SIMILAR APPLICATIONS

臨時商店及服務行業和公眾停車場（貨櫃車除外）連附屬設施（為期5年）
新界元朗錦田錦慶園丈量約份第109約
地段第171號A分段餘段（部分）及第171號B分段（部分）
TEMPORARY SHOP AND SERVICES AND PUBLIC VEHICLE PARK (EXCLUDING CONTAINER VEHICLE) WITH
ANCILLARY FACILITIES FOR A PERIOD OF 5 YEARS
LOTS 171 S.A RP (PART) AND 171 S.B (PART) IN D.D. 109, KAM HING WAI, KAM TIN, YUEN LONG, NEW TERRITORIES

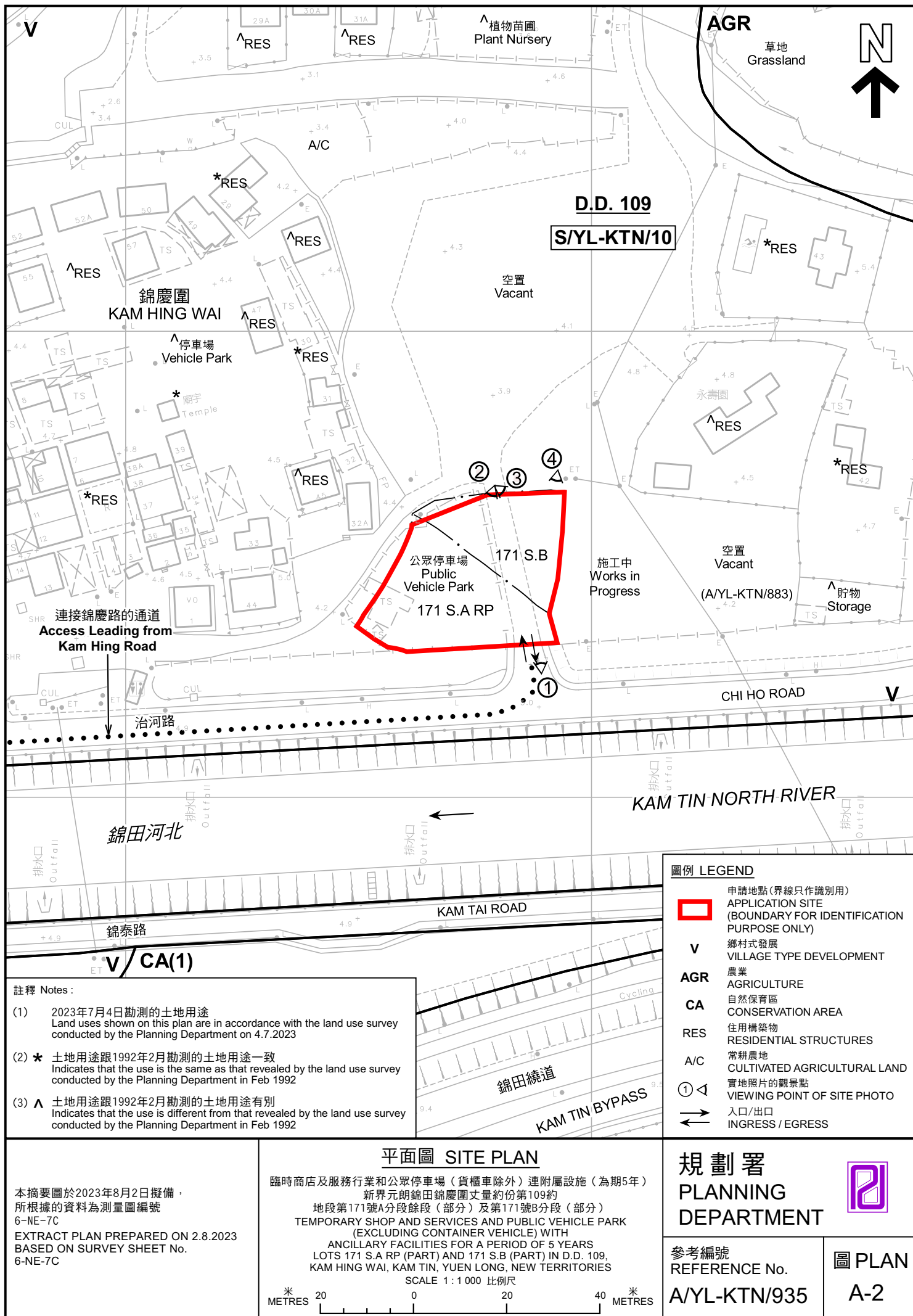
SCALE 1:7 500 比例尺

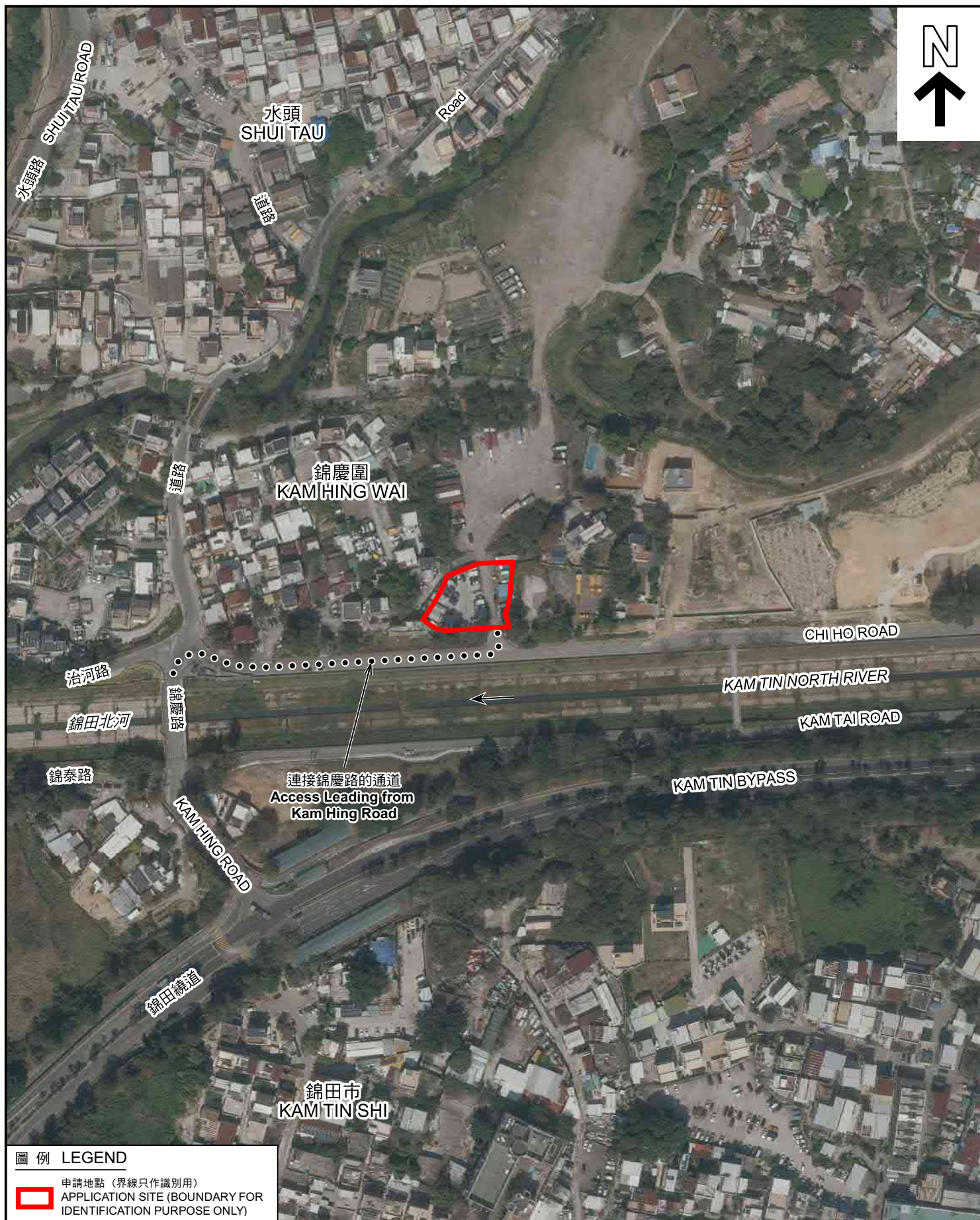
米 100 0 100 200 300 METRES

規劃署
PLANNING
DEPARTMENT

參考編號
REFERENCE No.
A/YL-KTN/935

圖 PLAN
A-1





圖例 LEGEND



申請地點 (界線只作識別用)
APPLICATION SITE (BOUNDARY FOR
IDENTIFICATION PURPOSE ONLY)

航攝照片 AERIAL PHOTO

本摘要圖於2023年7月28日擬備，
所根據的資料為地政總署於2022年2月14日
拍得的航攝照片編號 E149331C
EXTRACT PLAN PREPARED ON 28.7.2023
BASED ON AERIAL PHOTO No.
E149331C TAKEN ON 14.2.2022
BY LANDS DEPARTMENT

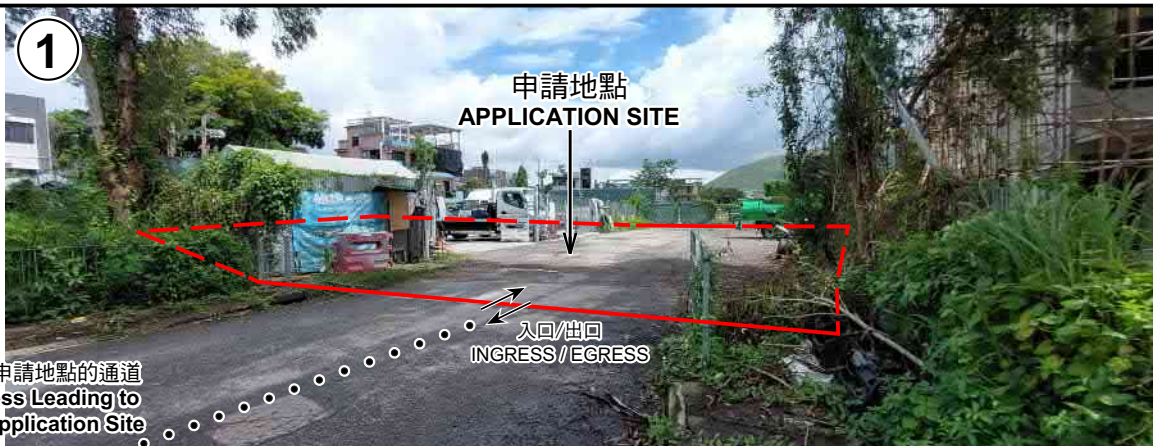
臨時商店及服務行業和公眾停車場 (貨櫃車除外) 連附屬設施 (為期5年)
新界元朗錦田錦慶圍丈量約份第109約
地段第171號A分段餘段 (部分) 及第171號B分段 (部分)
TEMPORARY SHOP AND SERVICES AND PUBLIC VEHICLE PARK
(EXCLUDING CONTAINER VEHICLE) WITH
ANCILLARY FACILITIES FOR A PERIOD OF 5 YEARS
LOTS 171 S.A.RP (PART) AND 171 S.B (PART) IN D.D. 109,
KAM HING WAI, KAM TIN, YUEN LONG, NEW TERRITORIES

規劃署
PLANNING
DEPARTMENT



參考編號
REFERENCE No.
A/YL-KTN/935

圖 PLAN
A-3



申請地點界線只作識別用 APPLICATION SITE BOUNDARY FOR IDENTIFICATION PURPOSE ONLY

實地照片 SITE PHOTOS

本圖於2023年7月27日擬備，所根據的資料為攝於2023年7月4日的實地照片
PLAN PREPARED ON 27.7.2023
BASED ON SITE PHOTOS
TAKEN ON 4.7.2023

臨時商店及服務行業和公眾停車場（貨櫃車除外）連附屬設施（為期5年）
新界元朗錦田錦慶圍丈量約份第109約
地段第171號A分段餘段（部分）及第171號B分段（部分）
TEMPORARY SHOP AND SERVICES AND PUBLIC VEHICLE PARK
(EXCLUDING CONTAINER VEHICLE) WITH
ANCILLARY FACILITIES FOR A PERIOD OF 5 YEARS
LOTS 171 S.A RP (PART) AND 171 S.B (PART) IN D.D. 109,
KAM HING WAI, KAM TIN, YUEN LONG, NEW TERRITORIES

規劃署
PLANNING
DEPARTMENT



參考編號
REFERENCE No.
A/YL-KTN/935

圖 PLAN
A-4