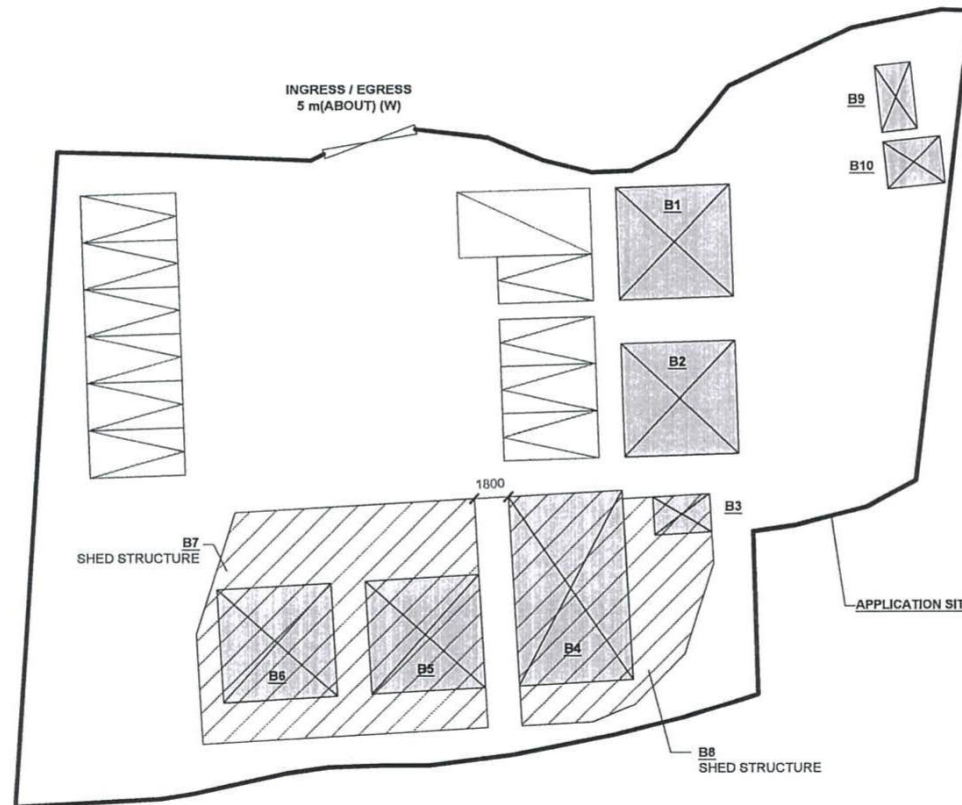
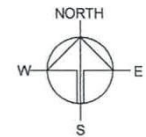


DEVELOPMENT PARAMETERS OF THE APPLICATION SITE

APPLICATION SITE AREA	: 1,483 m ²	(ABOUT)
COVERED AREA	: 372 m ²	(ABOUT)
UNCOVERED AREA	: 1,111 m ²	(ABOUT)
PLOT RATIO	: 0.25	(ABOUT)
SITE COVERAGE	: 25%	(ABOUT)
NO. OF STRUCTURE	: 10	
DOMESTIC GFA	: NOT APPLICABLE	
NON-DOMESTIC GFA	: 372 m ²	(ABOUT)
TOTAL GFA	: 372 m ²	(ABOUT)
BUILDING HEIGHT	: 3 m - 4 m	(ABOUT)
NO. OF STOREY	: 1	

STRUCTURE	USE	COVERED AREA	GFA	BUILDING HEIGHT
B1	FINANCIAL INSTITUTION (RECEPTION)	36 m ² (ABOUT)	36 m ² (ABOUT)	3.5 m (ABOUT)(1-STOREY)
B2	FINANCIAL INSTITUTION (RECEPTION)	36 m ² (ABOUT)	36 m ² (ABOUT)	3.5 m (ABOUT)(1-STOREY)
B3	WASHROOM	COVERED BY B8	COVERED BY B8	3.5 m (ABOUT)(1-STOREY)
B4	EATING PLACE	COVERED BY B8	COVERED BY B8	3.5 m (ABOUT)(1-STOREY)
B5	EATING PLACE	COVERED BY B7	COVERED BY B7	3.5 m (ABOUT)(1-STOREY)
B6	EATING PLACE	COVERED BY B7	COVERED BY B7	3.5 m (ABOUT)(1-STOREY)
B7	RAIN SHELTER (SHED STRUCTURE)	175 m ² (ABOUT)	175 m ² (ABOUT)	4 m (ABOUT)(1-STOREY)
B8	RAIN SHELTER (SHED STRUCTURE)	110 m ² (ABOUT)	110 m ² (ABOUT)	4 m (ABOUT)(1-STOREY)
B9	STORAGE OF GOODS	7 m ² (ABOUT)	7 m ² (ABOUT)	3m (ABOUT)(1-STOREY)
B10	WASHROOM	8 m ² (ABOUT)	8 m ² (ABOUT)	3m (ABOUT)(1-STOREY)
TOTAL		372 m ² (ABOUT)	372 m ² (ABOUT)	



PARKING AND LOADING/UNLOADING PROVISIONS

NO. OF PRIVATE CAR PARKING SPACE	: 10
DIMENSION OF PARKING SPACE	: 2.5m (W) X 5m (L)
NO. OF L/LUL SPACE FOR LIGHT GOODS VEHICLE	: 1
DIMENSION OF L/LUL SPACE	: 3.5m (W) X 7m (L)

LEGEND

	APPLICATION SITE
	STRUCTURE (ENCLOSED)
	STRUCTURE (4-SIDE OPENED)
	PARKING SPACE
	LOADING / UNLOADING SPACE
	INGRESS / EGRESS

PLANNING CONSULTANT



PROJECT

PROPOSED TEMPORARY SHOP AND SERVICES (FINANCIAL INSTITUTION) AND EATING PLACE WITH ANCILLARY FACILITIES FOR A PERIOD OF 3 YEARS

SITE LOCATION

VARIOUS LOTS IN D.D. 104 AND ADJOINING GOVERNMENT LAND, SAN TAM ROAD, KAM TIN, YUEN LONG, NEW TERRITORIES

SCALE

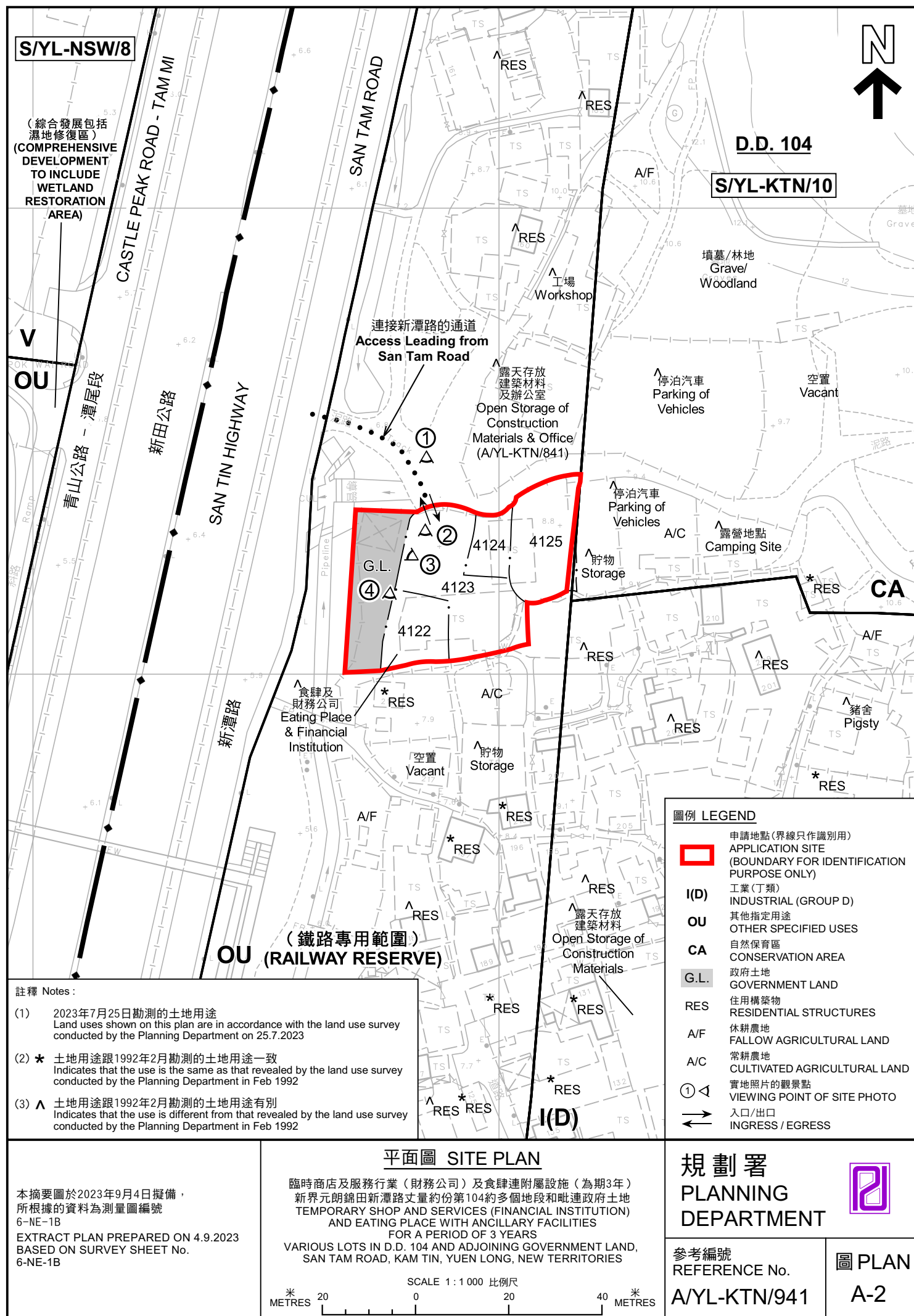
1:300 @ A4

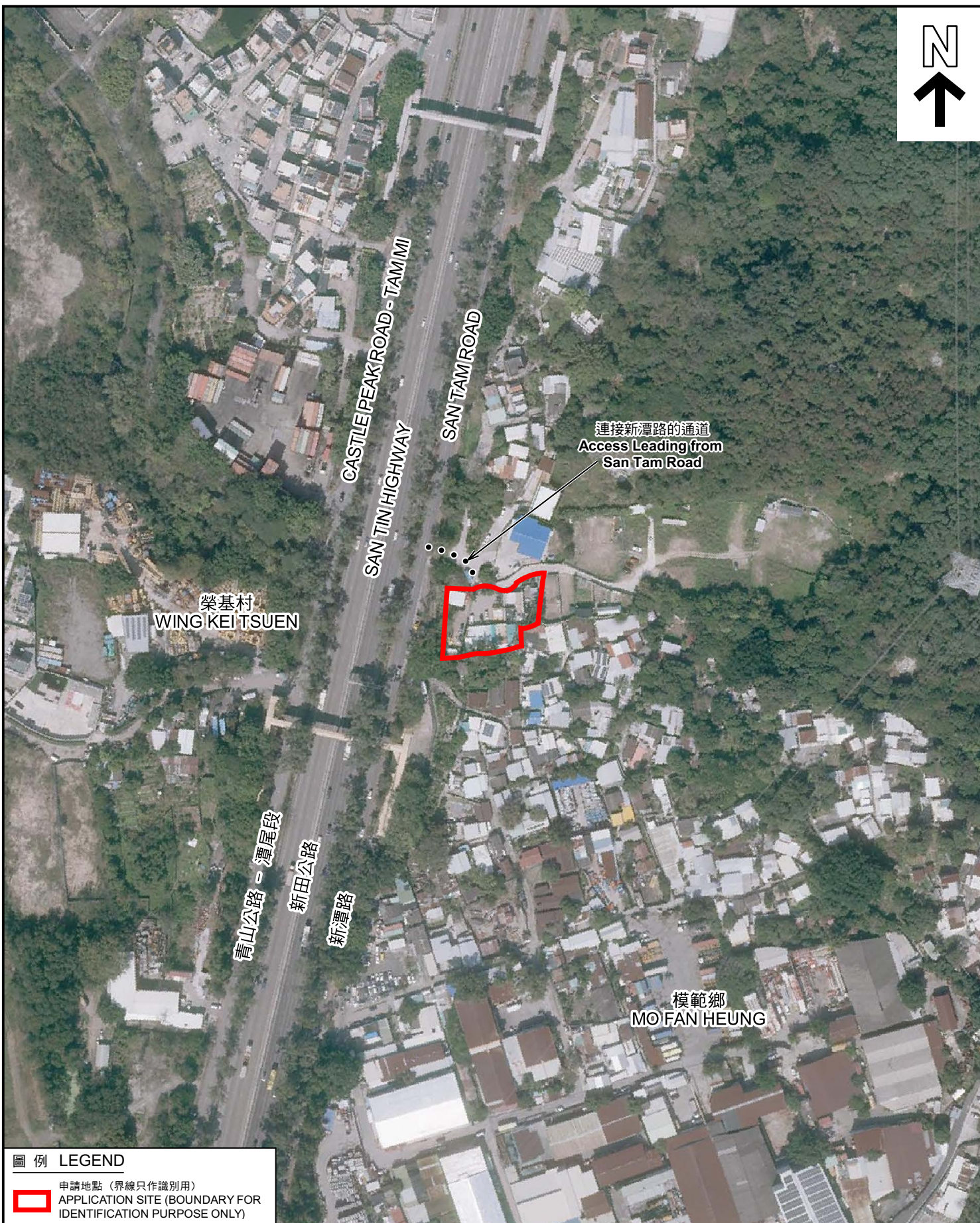
DRAWN BY	DATE
MN	28.5.2023
REVISOR BY	DATE
APPROVED BY	DATE
DWG. TITLE	LAYOUT PLAN
DWG. NO.	VER.
PLAN 4	001

(摘錄自申請人於 12.7.2023 呈交的申請書)
(Extract from Applicant's
Submission of 12.7.2023)

參考編號
REFERENCE No.
A/YL-KTN/941

繪圖
DRAWING
A - 1





圖例 LEGEND



申請地點 (界線只作識別用)
APPLICATION SITE (BOUNDARY FOR
IDENTIFICATION PURPOSE ONLY)

航攝照片 AERIAL PHOTO

本摘要圖於2023年8月11日擬備，
所根據的資料為地政總署於2022年2月14日
拍得的航攝照片編號 E149512C
EXTRACT PLAN PREPARED ON 11.8.2023
BASED ON AERIAL PHOTO No.
E149512C TAKEN ON 14.2.2022
BY LANDS DEPARTMENT

臨時商店及服務行業（財務公司）及食肆連附屬設施（為期3年）
新界元朗錦田新潭路丈量約份第104約多個地段和毗連政府土地
TEMPORARY SHOP AND SERVICES (FINANCIAL INSTITUTION)
AND EATING PLACE WITH ANCILLARY FACILITIES
FOR A PERIOD OF 3 YEARS
VARIOUS LOTS IN D.D. 104 AND ADJOINING GOVERNMENT LAND,
SAN TAM ROAD, KAM TIN, YUEN LONG, NEW TERRITORIES

規劃署
PLANNING
DEPARTMENT



參考編號
REFERENCE No.
A/YL-KTN/941

圖 PLAN
A-3



申請地點界線只作識別用 APPLICATION SITE BOUNDARY FOR IDENTIFICATION PURPOSE ONLY

實地照片 SITE PHOTOS

本圖於2023年8月22日擬備，所根據的資料為攝於2023年7月25日的實地照片
PLAN PREPARED ON 22.8.2023
BASED ON SITE PHOTOS
TAKEN ON 25.7.2023

臨時商店及服務行業（財務公司）及食肆連附屬設施（為期3年）
新界元朗錦田新潭路丈量約份第104約多個地段和毗連政府土地
TEMPORARY SHOP AND SERVICES (FINANCIAL INSTITUTION)
AND EATING PLACE WITH ANCILLARY FACILITIES
FOR A PERIOD OF 3 YEARS
VARIOUS LOTS IN D.D. 104 AND ADJOINING GOVERNMENT LAND,
SAN TAM ROAD, KAM TIN, YUEN LONG, NEW TERRITORIES

規劃署
PLANNING
DEPARTMENT



參考編號
REFERENCE No.
A/YL-KTN/941

圖 PLAN
A-4