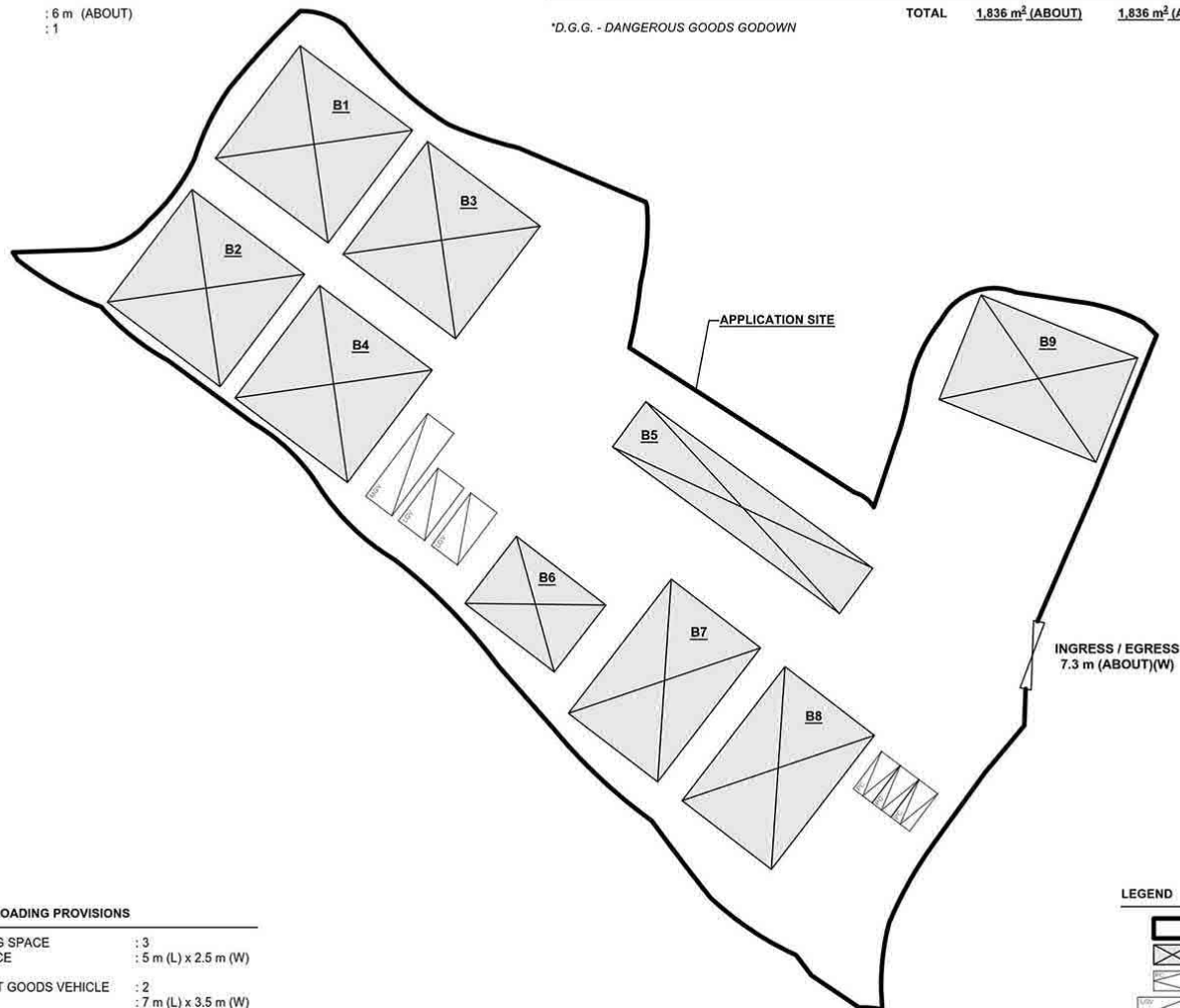
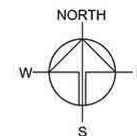


# DEVELOPMENT PARAMETERS

APPLICATION SITE AREA	: 5,042 m <sup>2</sup>	(ABOUT)
COVERED AREA	: 1,836 m <sup>2</sup>	(ABOUT)
UNCOVERED AREA	: 3,206 m <sup>2</sup>	(ABOUT)
PLOT RATIO	: 0.36	(ABOUT)
SITE COVERAGE	: 36 %	(ABOUT)
NO. OF STRUCTURE	: 9	
DOMESTIC GFA	: NOT APPLICABLE	
NON-DOMESTIC GFA	: 1,836 m <sup>2</sup>	(ABOUT)
TOTAL GFA	: 1,836 m <sup>2</sup>	(ABOUT)
BUILDING HEIGHT	: 6 m (ABOUT)	
NO. OF STOREY	: 1	

STRUCTURE	USE	COVERED AREA	GFA	BUILDING HEIGHT
B1	WAREHOUSE (EXCLUDING D.G.G.)	225 m <sup>2</sup> (ABOUT)	225 m <sup>2</sup> (ABOUT)	6 m (ABOUT)(1-STOREY)
B2	WAREHOUSE (EXCLUDING D.G.G.)	225 m <sup>2</sup> (ABOUT)	225 m <sup>2</sup> (ABOUT)	6 m (ABOUT)(1-STOREY)
B3	WAREHOUSE (EXCLUDING D.G.G.)	225 m <sup>2</sup> (ABOUT)	225 m <sup>2</sup> (ABOUT)	6 m (ABOUT)(1-STOREY)
B4	WAREHOUSE (EXCLUDING D.G.G.)	225 m <sup>2</sup> (ABOUT)	225 m <sup>2</sup> (ABOUT)	6 m (ABOUT)(1-STOREY)
B5	SITE OFFICE, WASHROOM AND METER ROOM	180 m <sup>2</sup> (ABOUT)	180 m <sup>2</sup> (ABOUT)	6 m (ABOUT)(1-STOREY)
B6	WAREHOUSE (EXCLUDING D.G.G.)	108 m <sup>2</sup> (ABOUT)	108 m <sup>2</sup> (ABOUT)	6 m (ABOUT)(1-STOREY)
B7	WAREHOUSE (EXCLUDING D.G.G.)	216 m <sup>2</sup> (ABOUT)	216 m <sup>2</sup> (ABOUT)	6 m (ABOUT)(1-STOREY)
B8	WAREHOUSE (EXCLUDING D.G.G.)	216 m <sup>2</sup> (ABOUT)	216 m <sup>2</sup> (ABOUT)	6 m (ABOUT)(1-STOREY)
B9	WAREHOUSE (EXCLUDING D.G.G.)	216 m <sup>2</sup> (ABOUT)	216 m <sup>2</sup> (ABOUT)	6 m (ABOUT)(1-STOREY)
TOTAL		1,836 m <sup>2</sup> (ABOUT)	1,836 m <sup>2</sup> (ABOUT)	

\*D.G.G. - DANGEROUS GOODS GODOWN



INGRESS / EGRESS  
7.3 m (ABOUT)(W)

## PARKING AND LOADING / UNLOADING PROVISIONS

NO. OF PRIVATE CAR PARKING SPACE	: 3
DIMENSION OF PARKING SPACE	: 5 m (L) x 2.5 m (W)
NO. OF L/U SPACE FOR LIGHT GOODS VEHICLE	: 2
DIMENSION OF L/U SPACE	: 7 m (L) x 3.5 m (W)
NO. OF L/U SPACE FOR MEDIUM GOODS VEHICLE	: 1
DIMENSION OF L/U SPACE	: 11 m (L) x 3.5 m (W)

## LEGEND

	APPLICATION SITE
	STRUCTURE
	PARKING SPACE (PC)
	LOADING / UNLOADING SPACE (LGV)
	LOADING / UNLOADING SPACE (MGV)
	INGRESS / EGRESS

## PLANNING CONSULTANT



## PROJECT

PROPOSED TEMPORARY  
WAREHOUSE (EXCLUDING  
DANGEROUS GOODS GODOWN)  
WITH ANCILLARY FACILITIES  
FOR A PERIOD OF 3 YEARS AND  
ASSOCIATED FILLING OF LAND

## SITE LOCATION

VARIOUS LOTS IN D.D. 107, KAM  
TIN, YUEN LONG, NEW  
TERRITORIES

## SCALE

1:700 @ 1/100

DRAWN BY MN	DATE 17.8.2023
REVISED BY MN	DATE 20.10.2023
APPROVED BY	DATE
DWG. TITLE LAYOUT PLAN	
DWG NO. PLAN 1	VER. 002

A/YL-KTN/955

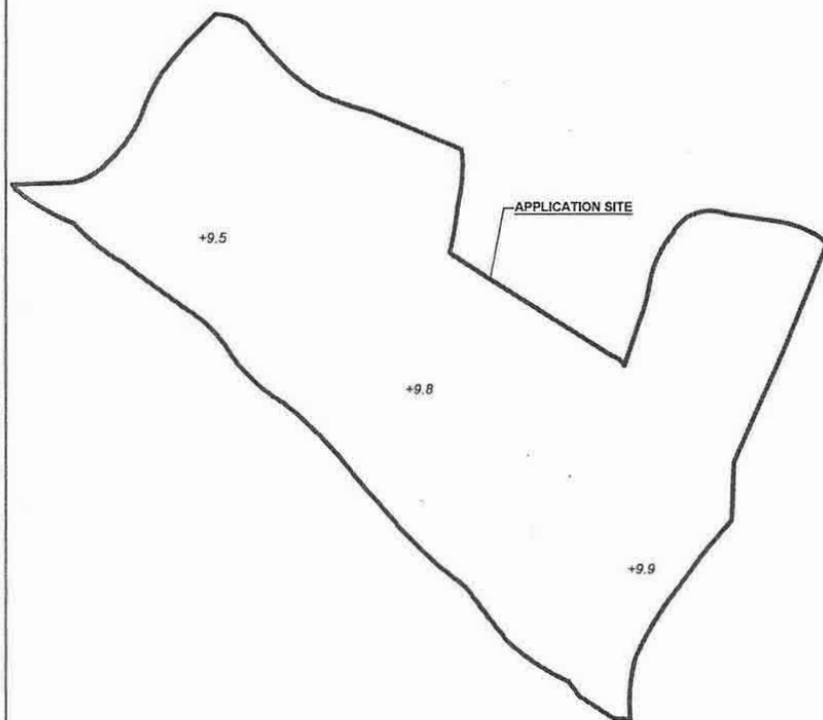
(摘錄自申請人於20. 10. 2023呈交的進一步資料)  
(Extract from Applicant's Further  
Information Submitted on 20.10.2023)

參考編號  
REFERENCE No.  
A/YL-KTN/955 & 957

繪圖  
DRAWING  
A - 1

# APPLICATION SITE BEFORE FILLING OF LAND

APPLICATION SITE AREA : 5,042 m<sup>2</sup> (ABOUT)  
 SITE LEVELS BEFORE FILLING OF LAND : +9.5 mPD TO +9.9 mPD (ABOUT)

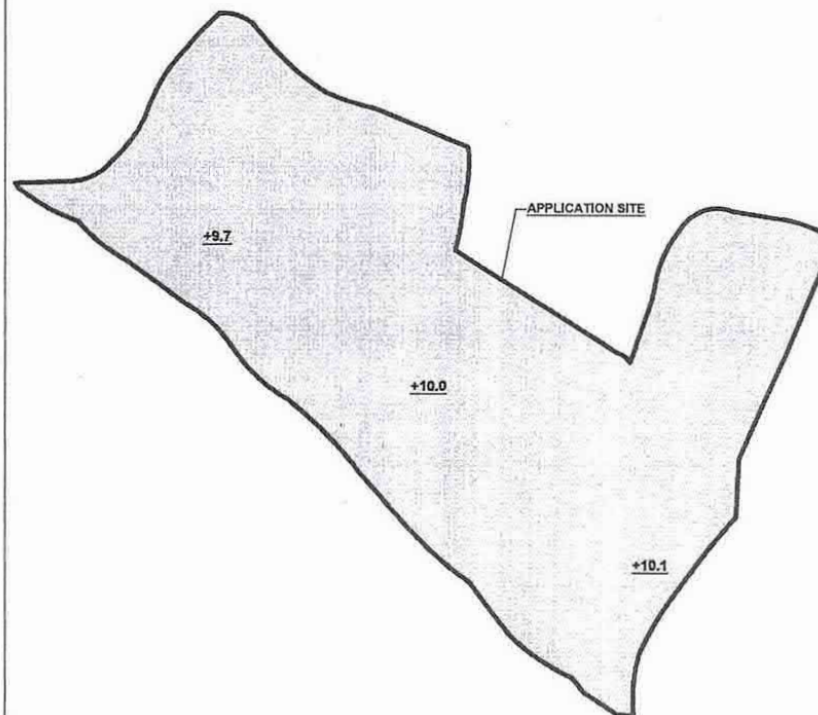


SITE LEVELS ARE FOR REFERENCE ONLY.

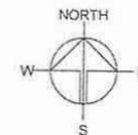
# EXISTING FILLING OF LAND AREA

APPLICATION SITE AREA : 5,042 m<sup>2</sup> (ABOUT)  
 COVERED BY STRUCTURE : 1,836 m<sup>2</sup> (ABOUT)  
 EXISTING FILLED AREA : 5,042 m<sup>2</sup> (ABOUT)  
 DEPTH OF LAND FILLING : NOT MORE THAN 0.2 m (ABOUT)  
 PROPOSED SITE LEVELS : +9.7 mPD TO +10.1 mPD (ABOUT)  
 MATERIAL OF LAND FILLING : CONCRETE  
 USE : SITE FORMATION OF STRUCTURES, AND CIRCULATION SPACE

THE APPLICATION SITE HAS BEEN FILLED WITH CONCRETE. NO FURTHER FILLING OF LAND WILL BE CARRIED OUT AT THE SITE DURING THE PLANNING APPROVAL PERIOD.



LEGEND  
 APPLICATION SITE  
 LAND FILLING AREA  
 SITE LEVEL



PLANNING CONSULTANT



PROJECT

PROPOSED WAREHOUSE WITH ANCILLARY FACILITIES FOR A PERIOD OF 3 YEARS AND ASSOCIATED FILLING OF LAND  
 TEMPORARY (EXCLUDING DANGEROUS GOODS GODOWN)

SITE LOCATION

VARIOUS LOTS IN D.D. 107, KAM TIN, YUEN LONG, NEW TERRITORIES

SCALE

1 : 1000

DRAWN BY

MN

DATE

17.8.2023

REVISED BY

DATE

APPROVED BY

DATE

DWG. TITLE

FILLING OF LAND

DWG. NO.

PLAN 5

VER.

001

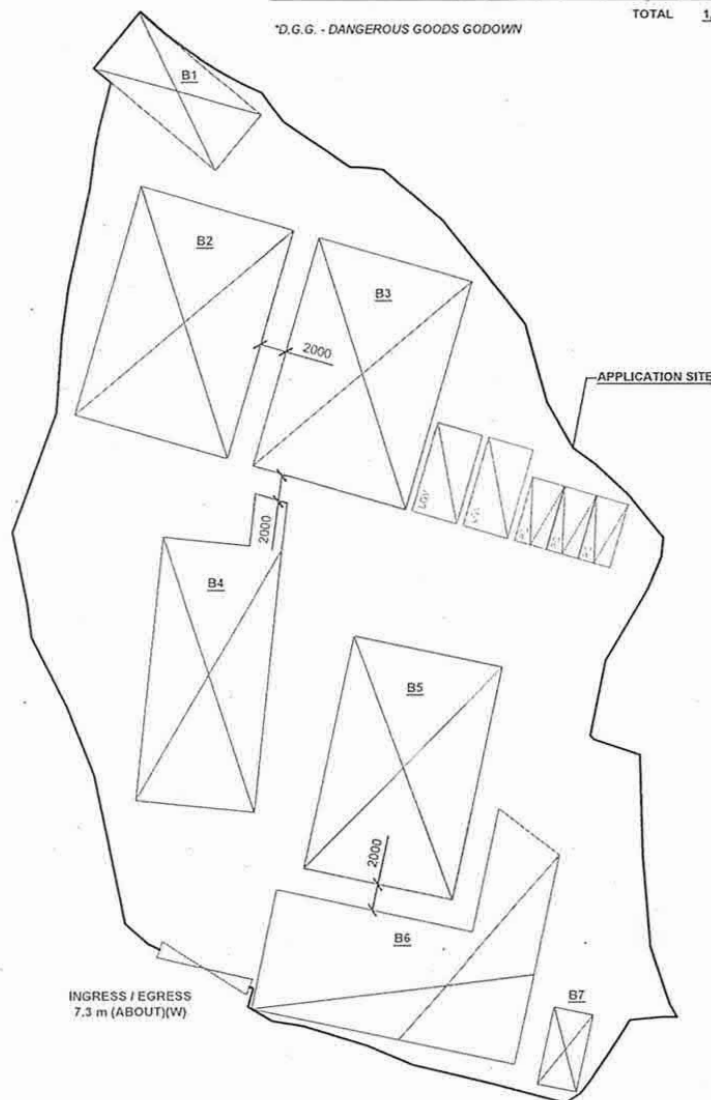
# DEVELOPMENT PARAMETERS

APPLICATION SITE AREA	: 2,683 m <sup>2</sup>	(ABOUT)
COVERED AREA	: 1,136 m <sup>2</sup>	(ABOUT)
UNCOVERED AREA	: 1,547 m <sup>2</sup>	(ABOUT)
PLOT RATIO	: 0.42	(ABOUT)
SITE COVERAGE	: 42 %	(ABOUT)
NO. OF STRUCTURE	: 7	
DOMESTIC GFA	: NOT APPLICABLE	
NON-DOMESTIC GFA	: 1,136 m <sup>2</sup>	(ABOUT)
TOTAL GFA	: 1,136 m <sup>2</sup>	(ABOUT)
BUILDING HEIGHT	: 3 m - 7 m	(ABOUT)
NO. OF STOREY	: 1	

STRUCTURE	USE	COVERED AREA	GFA	BUILDING HEIGHT
B1	WAREHOUSE (EXCLUDING D.G.G.)	65 m <sup>2</sup> (ABOUT)	65 m <sup>2</sup> (ABOUT)	7 m (ABOUT)(1-STOREY)
B2	WAREHOUSE (EXCLUDING D.G.G.)	216 m <sup>2</sup> (ABOUT)	216 m <sup>2</sup> (ABOUT)	7 m (ABOUT)(1-STOREY)
B3	WAREHOUSE (EXCLUDING D.G.G.) & OFFICE	216 m <sup>2</sup> (ABOUT)	216 m <sup>2</sup> (ABOUT)	7 m (ABOUT)(1-STOREY)
B4	WAREHOUSE (EXCLUDING D.G.G.) & OFFICE	189 m <sup>2</sup> (ABOUT)	189 m <sup>2</sup> (ABOUT)	7 m (ABOUT)(1-STOREY)
B5	WAREHOUSE (EXCLUDING D.G.G.) & OFFICE	206 m <sup>2</sup> (ABOUT)	206 m <sup>2</sup> (ABOUT)	7 m (ABOUT)(1-STOREY)
B6	WAREHOUSE (EXCLUDING D.G.G.) & OFFICE	226 m <sup>2</sup> (ABOUT)	226 m <sup>2</sup> (ABOUT)	7 m (ABOUT)(1-STOREY)
B7	OFFICE	18 m <sup>2</sup> (ABOUT)	18 m <sup>2</sup> (ABOUT)	3 m (ABOUT)(1-STOREY)

\*D.G.G. - DANGEROUS GOODS GODOWN

TOTAL 1,136 m<sup>2</sup> (ABOUT) 1,136 m<sup>2</sup> (ABOUT)



INGRESS / EGRESS  
7.3 m (ABOUT)(W)

## LEGEND

	APPLICATION SITE
	STRUCTURE
	PARKING SPACE
	LOADING / UNLOADING SPACE
	INGRESS / EGRESS

## PARKING AND LOADING / UNLOADING PROVISIONS

NO. OF PRIVATE CAR PARKING SPACE	: 3
DIMENSION OF PARKING SPACE	: 5 m (L) x 2.5 m (W)
NO. OF L/U SPACE FOR LIGHT GOODS VEHICLE	: 2
DIMENSION OF L/U SPACE	: 7 m (L) x 3.5 m (W)

## PLANNING CONSULTANT



## PROJECT

PROPOSED TEMPORARY  
WAREHOUSE (EXCLUDING  
DANGEROUS GOODS GODOWN)  
WITH ANCILLARY FACILITIES  
FOR A PERIOD OF 3 YEARS AND  
ASSOCIATED FILLING OF LAND

## SITE LOCATION

VARIOUS LOTS IN D.D. 107 AND  
ADJOINING GOVERNMENT  
LAND, KAM TIN, YUEN LONG,  
NEW TERRITORIES

## SCALE

1:500 @ A4

DRAWN BY	DATE
MN	15.8.2023
REVIEWED BY	DATE
OL	24.8.2023
APPROVED BY	DATE

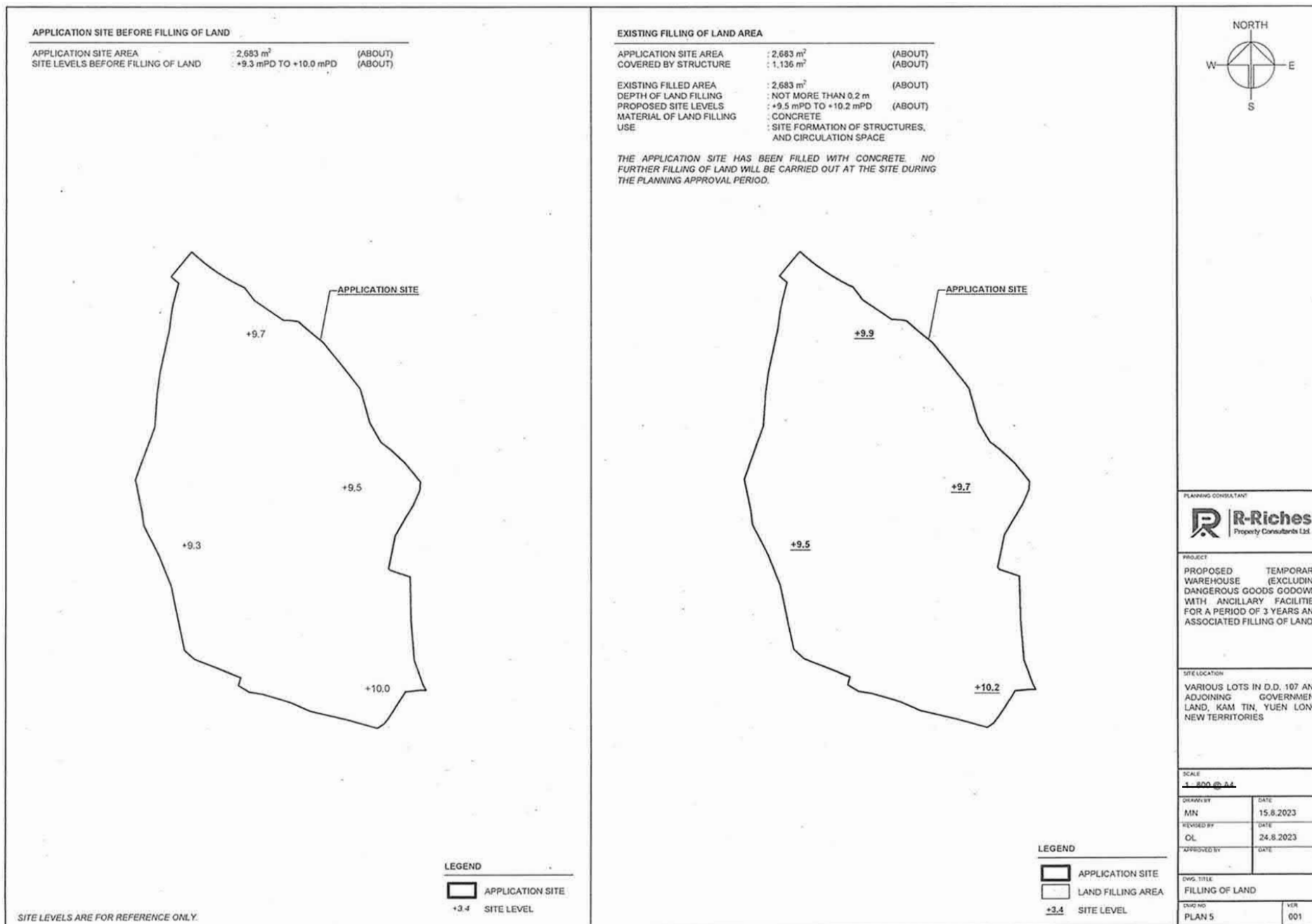
DWG. TITLE  
LAYOUT PLAN

DWG. NO.	VER.
PLAN 4	001

(摘錄自申請人於 29.8.2023 呈交的申請書)  
(Extract from Applicant's  
Submission of 29.8.2023)

參考編號  
REFERENCE No.  
A/YL-KTN/955 & 957

繪圖  
DRAWING  
A - 3



A/YL-KTN/957

(摘錄自申請人於 29.8.2023 呈交的申請書)  
(Extract from Applicant's  
Submission of 29.8.2023)

參考編號  
REFERENCE No.  
A/YL-KTN/955 & 957

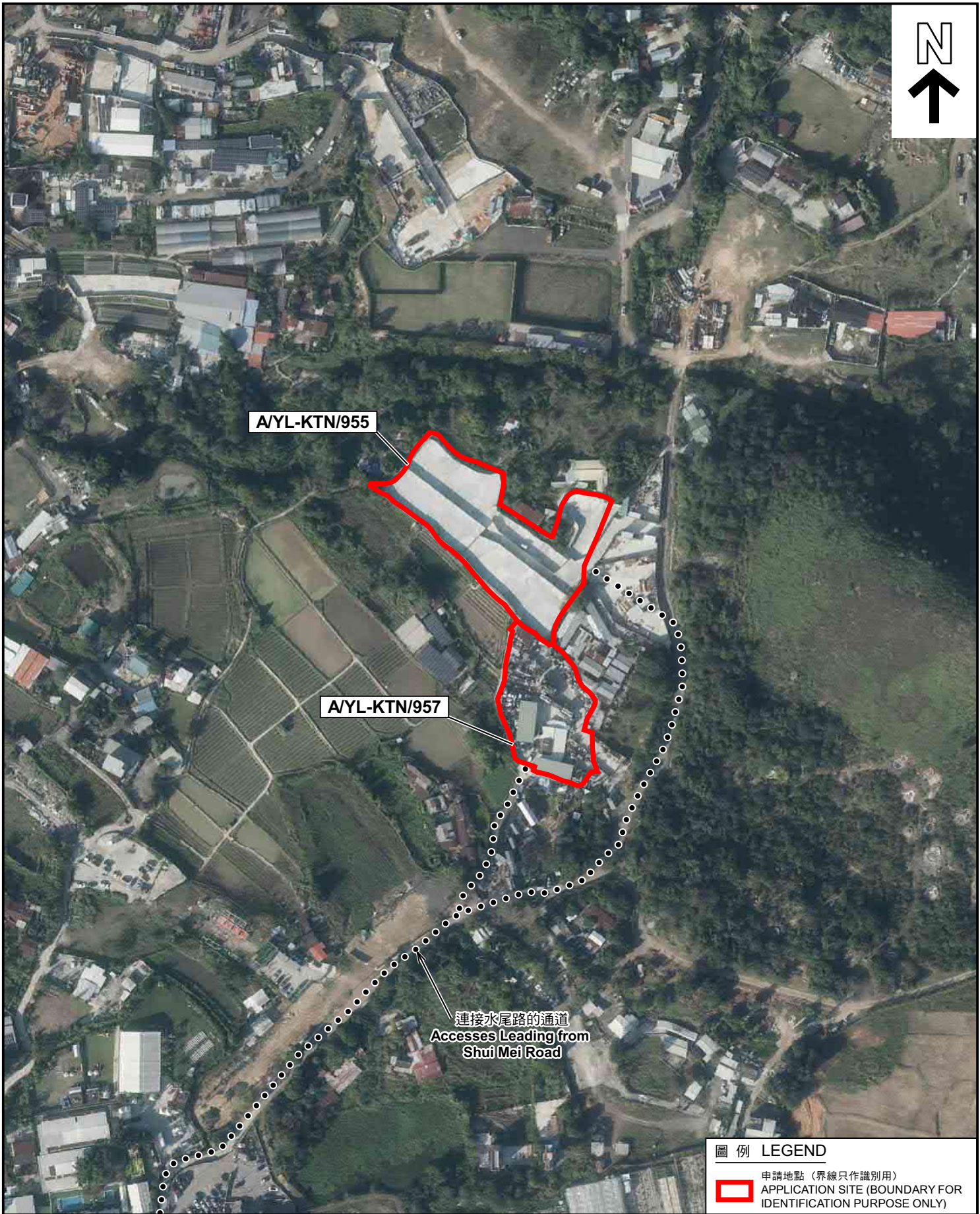
繪圖  
DRAWING  
A - 4











A/YL-KTN/955

A/YL-KTN/957

連接水尾路的通道  
Accesses Leading from  
Shui Mei Road

圖例 LEGEND

 申請地點（界線只作識別用）  
APPLICATION SITE (BOUNDARY FOR  
IDENTIFICATION PURPOSE ONLY)

航攝照片 AERIAL PHOTO

本摘要圖於2023年10月18日擬備，  
所根據的資料為地政總署於2022年12月18日  
拍得的航攝照片編號 E174407C  
EXTRACT PLAN PREPARED ON 18.10.2023  
BASED ON AERIAL PHOTO No.  
E174407C TAKEN ON 18.12.2022  
BY LANDS DEPARTMENT

擬議臨時貨倉（危險品倉庫除外）連附屬設施（為期3年）及填土工程  
**A/YL-KTN/955** 新界元朗錦田丈量約份第107約多個地段  
PROPOSED TEMPORARY WAREHOUSE (EXCLUDING DANGEROUS GOODS GODOWN)  
WITH ANCILLARY FACILITIES FOR A PERIOD OF 3 YEARS AND FILLING OF LAND  
VARIOUS LOTS IN D.D. 107, KAM TIN, YUEN LONG, NEW TERRITORIES  
擬議臨時貨倉（危險品倉庫除外）連附屬設施（為期3年）及填土工程  
**A/YL-KTN/957** 新界元朗錦田丈量約份第107約多個地段和毗連政府土地  
PROPOSED TEMPORARY WAREHOUSE (EXCLUDING DANGEROUS GOODS GODOWN)  
WITH ANCILLARY FACILITIES FOR A PERIOD OF 3 YEARS AND FILLING OF LAND  
VARIOUS LOTS IN D.D. 107 AND ADJOINING GOVERNMENT LAND,  
KAM TIN, YUEN LONG, NEW TERRITORIES

規劃署  
PLANNING  
DEPARTMENT



參考編號  
REFERENCE No.  
A/YL-KTN/955 & 957

圖 PLAN  
A-3





申請地點界線只作識別用 APPLICATION SITE BOUNDARY FOR IDENTIFICATION PURPOSE ONLY

### 實地照片 SITE PHOTOS

本圖於2023年10月20日擬備，所根據的資料為攝於2023年9月22日的實地照片  
PLAN PREPARED ON 20.10.2023  
BASED ON SITE PHOTOS  
TAKEN ON 22.9.2023

**A/YL-KTN/955** 擬議臨時貨倉（危險品倉庫除外）連附屬設施（為期3年）及填土工程  
新界元朗錦田丈量約份第107約多個地段  
PROPOSED TEMPORARY WAREHOUSE (EXCLUDING DANGEROUS GOODS GODOWN)  
WITH ANCILLARY FACILITIES FOR A PERIOD OF 3 YEARS AND FILLING OF LAND  
VARIOUS LOTS IN D.D. 107, KAM TIN, YUEN LONG, NEW TERRITORIES

**A/YL-KTN/957** 擬議臨時貨倉（危險品倉庫除外）連附屬設施（為期3年）及填土工程  
新界元朗錦田丈量約份第107約多個地段和毗連政府土地  
PROPOSED TEMPORARY WAREHOUSE (EXCLUDING DANGEROUS GOODS GODOWN)  
WITH ANCILLARY FACILITIES FOR A PERIOD OF 3 YEARS AND FILLING OF LAND  
VARIOUS LOTS IN D.D. 107 AND ADJOINING GOVERNMENT LAND,  
KAM TIN, YUEN LONG, NEW TERRITORIES

規劃署  
PLANNING  
DEPARTMENT



參考編號  
REFERENCE No.  
A/YL-KTN/955 & 957

圖 PLAN  
A-4a



3



申請地點  
APPLICATION SITE  
(A/YL-KTN/955)

4



申請地點  
APPLICATION SITE  
(A/YL-KTN/955)

申請地點界線只作識別用 APPLICATION SITE BOUNDARY FOR IDENTIFICATION PURPOSE ONLY

### 實地照片 SITE PHOTOS

本圖於2023年10月20日擬備，所根據的資料為攝於2023年9月22日的實地照片  
PLAN PREPARED ON 20.10.2023  
BASED ON SITE PHOTOS  
TAKEN ON 22.9.2023

**A/YL-KTN/955** 擬議臨時貨倉（危險品倉庫除外）連附屬設施（為期3年）及填土工程  
PROPOSED TEMPORARY WAREHOUSE (EXCLUDING DANGEROUS GOODS GODOWN)  
WITH ANCILLARY FACILITIES FOR A PERIOD OF 3 YEARS AND FILLING OF LAND  
VARIOUS LOTS IN D.D. 107, KAM TIN, YUEN LONG, NEW TERRITORIES

**A/YL-KTN/957** 新界元朗錦田丈量約份第107約多個地段和毗連政府土地  
PROPOSED TEMPORARY WAREHOUSE (EXCLUDING DANGEROUS GOODS GODOWN)  
WITH ANCILLARY FACILITIES FOR A PERIOD OF 3 YEARS AND FILLING OF LAND  
VARIOUS LOTS IN D.D. 107 AND ADJOINING GOVERNMENT LAND,  
KAM TIN, YUEN LONG, NEW TERRITORIES

規 劃 署  
PLANNING  
DEPARTMENT



參考編號  
REFERENCE No.  
A/YL-KTN/955 & 957

圖 PLAN  
A-4b



申請地點界線只作識別用 APPLICATION SITE BOUNDARY FOR IDENTIFICATION PURPOSE ONLY

### 實地照片 SITE PHOTOS

本圖於2023年10月20日擬備，所根據的資料為攝於2023年10月10日的實地照片  
PLAN PREPARED ON 20.10.2023  
BASED ON SITE PHOTOS  
TAKEN ON 10.10.2023

擬議臨時貨倉（危險品倉庫除外）連附屬設施（為期3年）及填土工程  
**A/YL-KTN/955** 新界元朗錦田丈量約份第107約多個地段  
PROPOSED TEMPORARY WAREHOUSE (EXCLUDING DANGEROUS GOODS GODOWN)  
WITH ANCILLARY FACILITIES FOR A PERIOD OF 3 YEARS AND FILLING OF LAND  
VARIOUS LOTS IN D.D. 107, KAM TIN, YUEN LONG, NEW TERRITORIES

擬議臨時貨倉（危險品倉庫除外）連附屬設施（為期3年）及填土工程  
**A/YL-KTN/957** 新界元朗錦田丈量約份第107約多個地段和毗連政府土地  
PROPOSED TEMPORARY WAREHOUSE (EXCLUDING DANGEROUS GOODS GODOWN)  
WITH ANCILLARY FACILITIES FOR A PERIOD OF 3 YEARS AND FILLING OF LAND  
VARIOUS LOTS IN D.D. 107 AND ADJOINING GOVERNMENT LAND,  
KAM TIN, YUEN LONG, NEW TERRITORIES

規劃署  
PLANNING  
DEPARTMENT



參考編號  
REFERENCE No.  
A/YL-KTN/955 & 957

圖 PLAN  
A-4c