

# DEVELOPMENT PARAMETERS

APPLICATION SITE AREA	: 3,565 m <sup>2</sup>	(ABOUT)
COVERED AREA	: 332 m <sup>2</sup>	(ABOUT)
UNCOVERED AREA	: 3,233 m <sup>2</sup>	(ABOUT)
PLOT RATIO	: 0.09	(ABOUT)
SITE COVERAGE	: 9.3 %	(ABOUT)
NO. OF STRUCTURE	: 8	
DOMESTIC GFA	: NOT APPLICABLE	
NON-DOMESTIC GFA	: 332 m <sup>2</sup>	(ABOUT)
TOTAL GFA	: 332 m <sup>2</sup>	(ABOUT)
BUILDING HEIGHT	: 2.8 m - 4.5 m	(ABOUT)
NO. OF STOREY	: 1	

# PRESERVATION OF EXISTING TREES

NO. OF EXISTING TREES	: 3 (T1 - T3)
DETAILS OF TREES	: T1 - MORUS ALBA 5 m (H) x 6 m (SP)
	: T2 - CELTIS SINENSIS 6 m (H) x 7 m (SP)
	: T3 - MACARANGA TANARIUS 5 m (H) x 4 m (SP)

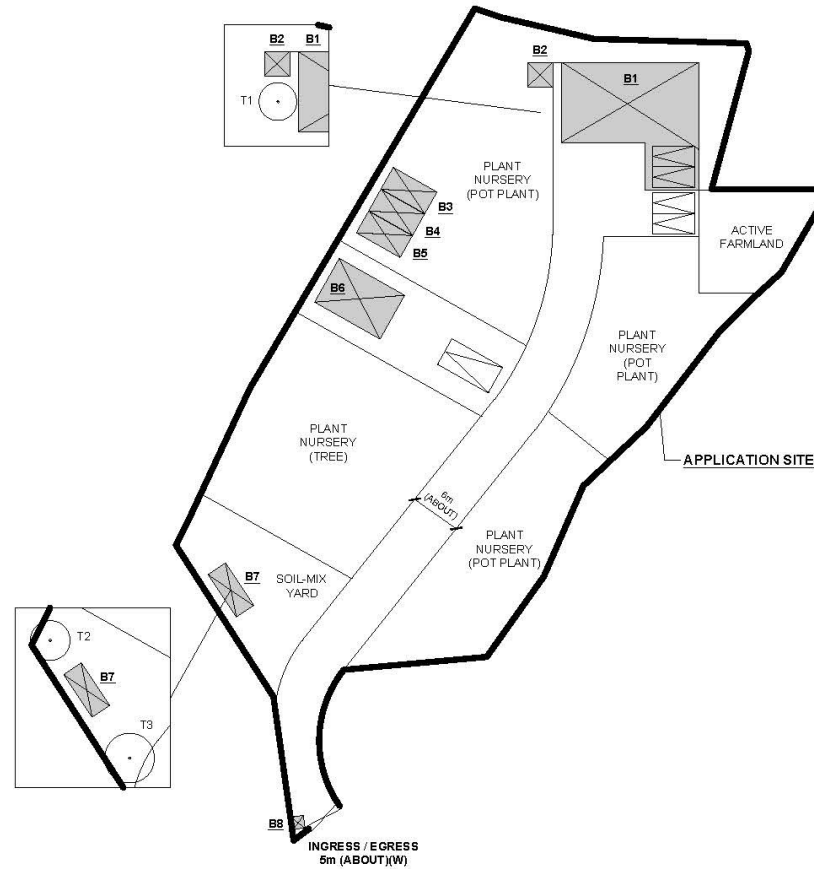
ALL THE EXISTING TREES WITHIN THE SITE WILL BE WELL-MAINTAINED BY THE APPLICANT DURING THE PLANNING APPROVAL PERIOD.

# PARKING AND LOADING / UNLOADING PROVISIONS

NO. OF PRIVATE CAR PARKING SPACE	: 4
DIMENSIONS OF PARKING SPACE	: 5 m (L) X 2.5 m (W)
NO. OF LOADING / UNLOADING SPACE FOR LIGHT GOODS VEHICLE	: 1
DIMENSIONS OF LOADING / UNLOADING SPACE	: 7 m (L) X 3.5 m (W)

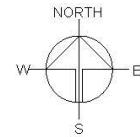
STRUCTURE	USE	COVERED AREA	GFA	BUILDING HEIGHT
B1	SITE OFFICE, MEETING ROOM AND COVERED CAR PARKING SPACES	197 m <sup>2</sup> (ABOUT)	197 m <sup>2</sup> (ABOUT)	4.5 m (ABOUT)(1-STOREY)
B2	PORTABLE TOILET	9 m <sup>2</sup> (ABOUT)	9 m <sup>2</sup> (ABOUT)	3 m (ABOUT)(1-STOREY)
B3*	GARDENER RESTING ROOM	18 m <sup>2</sup> (ABOUT)	18 m <sup>2</sup> (ABOUT)	2.8 m (ABOUT)(1-STOREY)
B4*	STORAGE OF FARM TOOLS	18 m <sup>2</sup> (ABOUT)	18 m <sup>2</sup> (ABOUT)	2.8 m (ABOUT)(1-STOREY)
B5*	STORAGE OF FARM TOOLS	18 m <sup>2</sup> (ABOUT)	18 m <sup>2</sup> (ABOUT)	2.8 m (ABOUT)(1-STOREY)
B6	GREENHOUSE	54 m <sup>2</sup> (ABOUT)	54 m <sup>2</sup> (ABOUT)	3 m (ABOUT)(1-STOREY)
B7*	STORAGE OF FERTILIZER & FARM TOOLS	15 m <sup>2</sup> (ABOUT)	15 m <sup>2</sup> (ABOUT)	2.8 m (ABOUT)(1-STOREY)
B8	GUARDROOM	3 m <sup>2</sup> (ABOUT)	3 m <sup>2</sup> (ABOUT)	2.8 m (ABOUT)(1-STOREY)
TOTAL		332 m <sup>2</sup> (ABOUT)	332 m <sup>2</sup> (ABOUT)	

\*STRUCTURES B3 TO B5 AND B7 ARE CONTAINER-CONVERTED STRUCTURES



# LEGEND

	APPLICATION SITE
	STRUCTURE
	PARKING SPACE (PC)
	LOADING / UNLOADING SPACE (LGV)
	INGRESS / EGRESS
	EXISTING TREES



# PLANNING CONSULTANT



# PROJECT

TEMPORARY OFFICE FOR PERMITTED AGRICULTURAL USE FOR A PERIOD OF 3 YEARS AND ASSOCIATED FILLING OF LAND

# SITE LOCATION

VARIOUS LOTS IN D.D. 110, KAM TIN, YUEN LONG, NEW TERRITORIES

# SCALE

1:500 @ A1

DRAWN BY	DATE
MN	27.10.2023
CHECKED BY	DATE
APPROVED BY	DATE
DWG. TITLE	
LAYOUT PLAN	
DWG NO.	VER.
PLAN 1	001

(摘錄自申請人於11. 1. 2024呈交的補充規劃書)  
(Extract from Applicant's Supplementary  
Planning Statement of 11.1.2024)

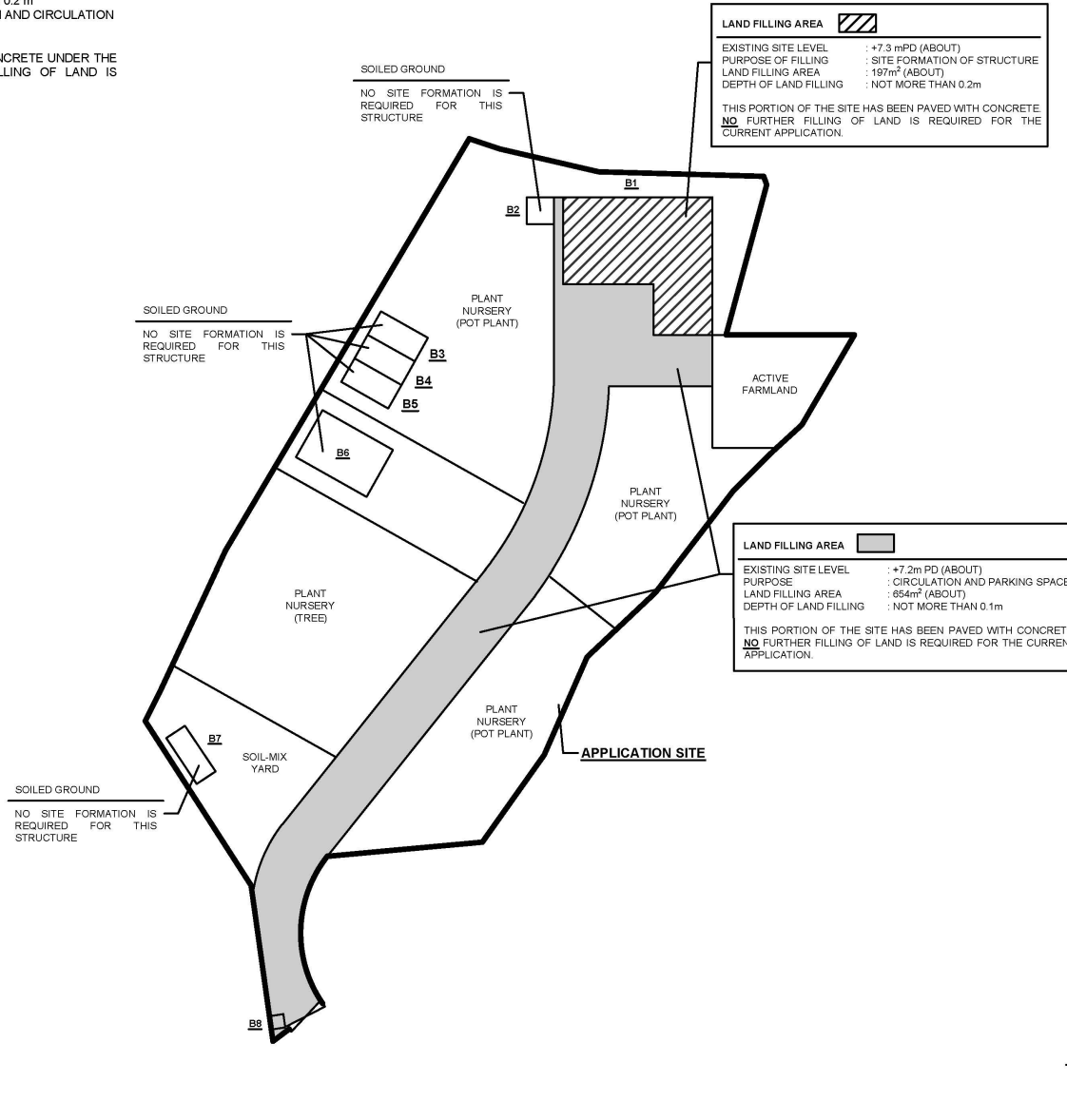
參考編號  
REFERENCE No.  
A/YL-KTN/974

繪圖  
DRAWING  
A - 1

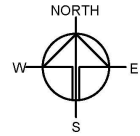
# FILLING OF LAND AT THE APPLICATION SITE

APPLICATION SITE AREA : 3,565 m<sup>2</sup> (ABOUT)  
 EXISTING FILLED AREA : 851 m<sup>2</sup> (ABOUT)  
 EXISTING SITE LEVELS : +7.2 mPD - +7.3 mPD (ABOUT)  
 DEPTH OF FILLING : NOT MORE THAN 0.2 m  
 PURPOSE OF FILLING : SITE FORMATION AND CIRCULATION PURPOSE

THE APPLICATION HAS BEEN PAVED WITH CONCRETE UNDER THE PREVIOUS APPLICATION. **NO** FURTHER FILLING OF LAND IS REQUIRED FOR THE CURRENT APPLICATION.



THIS PLAN IS FOR ILLUSTRATION PURPOSE ONLY.



PLANNING CONSULTANT



PROJECT

TEMPORARY OFFICE FOR PERMITTED AGRICULTURAL USE FOR A PERIOD OF 3 YEARS AND ASSOCIATED FILLING OF LAND

SITE LOCATION

VARIOUS LOTS IN D.D. 110, KAM TIN, YUEN LONG, NEW TERRITORIES

SCALE



DRAWN BY

MN

DATE

27.10.2023

CHECKED BY

LT

DATE

9.1.2024

APPROVED BY

DATE

DWG. TITLE

FILLING OF LAND

DWG. NO.

PLAN 2

VER.

001

(摘錄自申請人於11. 1. 2024呈交的補充規劃書)  
 (Extract from Applicant's Supplementary Planning Statement of 11.1.2024)

參考編號  
 REFERENCE No.  
 A/YL-KTN/974

繪圖  
 DRAWING  
 A - 2



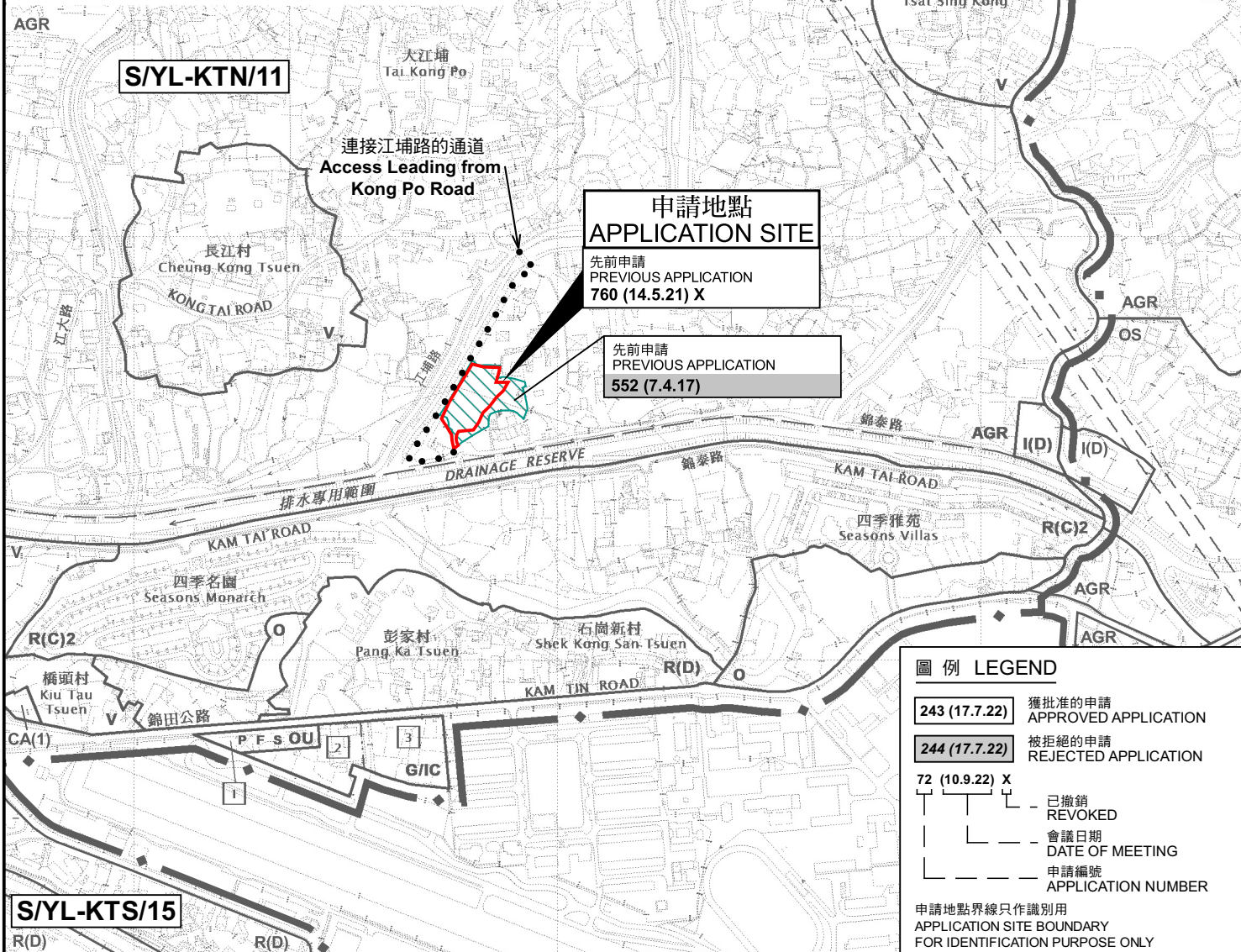


要覽圖 KEY PLAN

SCALE 1 : 50 000 比例尺



行政長官會同行政會議於2009年10月20日根據鐵路條例（第519）批准廣深港高速鐵路香港段方案。有關方案的鐵路顯示在這份圖則上，只 THE RAILWAY AS DESCRIBED IN THE RAILWAY SCHEME FOR THE HONG KONG THE GUANGZHOU - SHENZHEN - HONG KONG EXPRESS RAIL LINK AUTHORITY. THE CHIEF EXECUTIVE IN COUNCIL UNDER THE RAILWAYS ORDINANCE (C ON 20.10.2009 IS SHOWN ON THIS PLAN FOR INFORMATION OF



位置圖 LOCATION PLAN

本摘要圖於2024年1月12日擬備，所根據的資料為於2023年12月5日核准的分區計劃大綱圖編號 S/YL-KTN/11 EXTRACT PLAN PREPARED ON 12.1.2024 BASED ON OUTLINE ZONING PLAN No. S/YL-KTN/11 APPROVED ON 5.12.2023

擬議臨時辦公室（為期3年）及相關的填土工程  
新界元朗錦田丈量約份第110約多個地段  
PROPOSED TEMPORARY OFFICE FOR A PERIOD OF 3 YEARS  
AND ASSOCIATED FILLING OF LAND  
VARIOUS LOTS IN D.D. 110, KAM TIN, YUEN LONG, N.T.

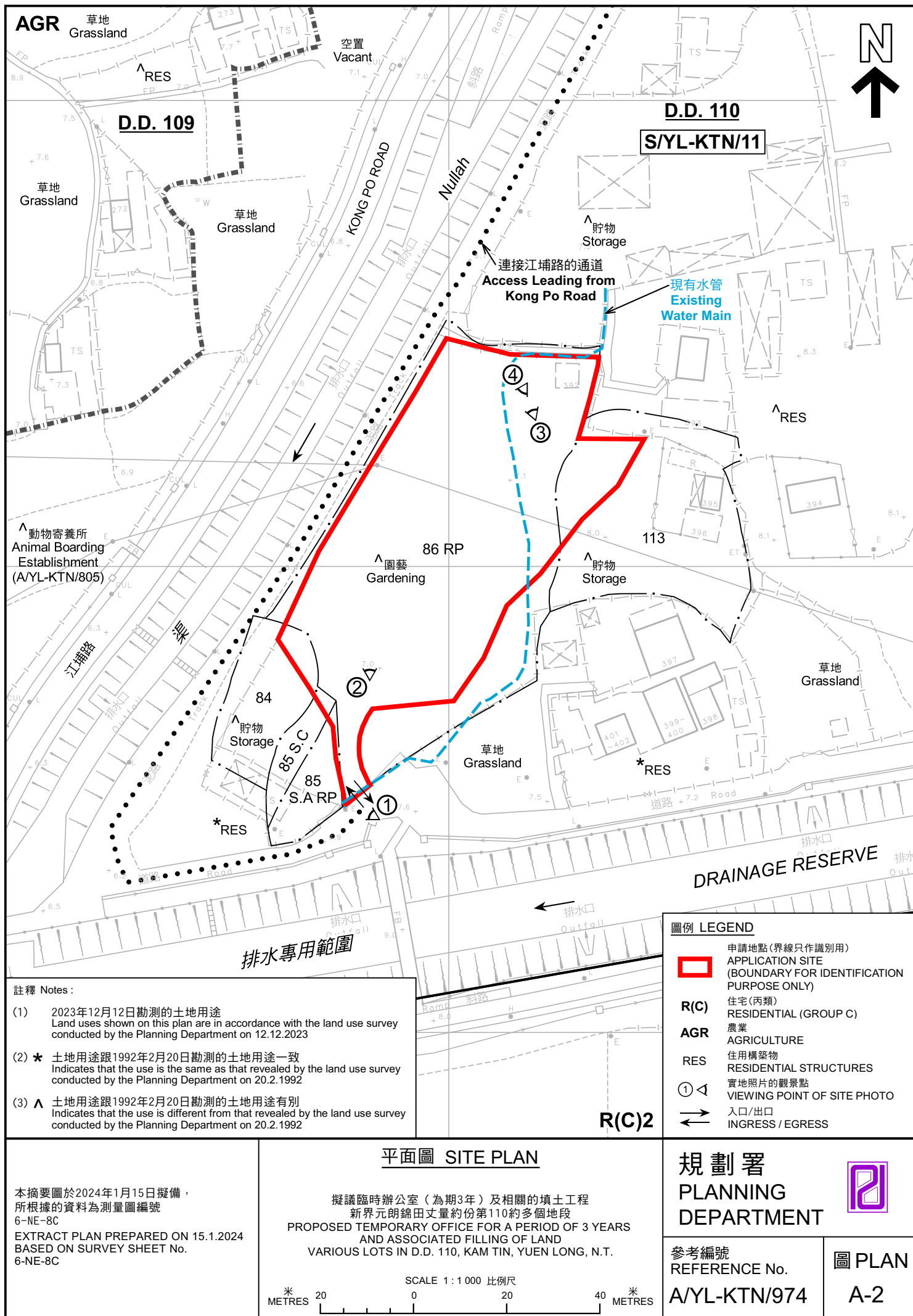
SCALE 1 : 7 500 比例尺  
米 METRES 100 0 100 200 300 米 METRES

規劃署  
PLANNING  
DEPARTMENT

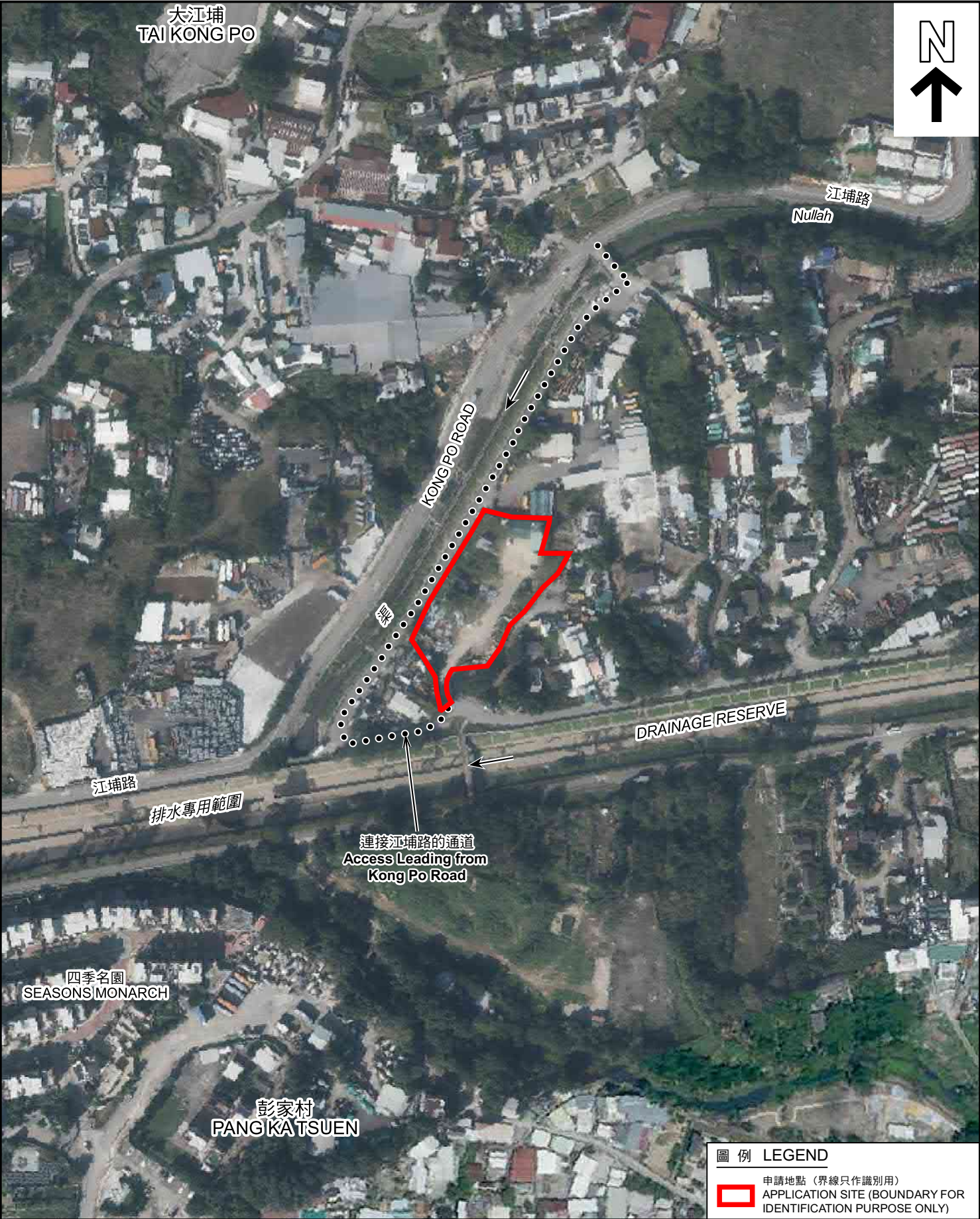


參考編號  
REFERENCE No.  
A/YL-KTN/974

圖 PLAN  
A-1







圖例 LEGEND

 申請地點（界線只作識別用）  
APPLICATION SITE (BOUNDARY FOR IDENTIFICATION PURPOSE ONLY)

航攝照片 AERIAL PHOTO

本摘要圖於2024年1月4日擬備，  
所根據的資料為地政總署於2022年12月18日  
拍得的航攝照片編號 E173757C  
EXTRACT PLAN PREPARED ON 4.1.2024  
BASED ON AERIAL PHOTO No.  
E173757C TAKEN ON 18.12.2022  
BY LANDS DEPARTMENT

擬議臨時辦公室（為期3年）及相關的填土工程  
新界元朗錦田丈量約份第110約多個地段  
PROPOSED TEMPORARY OFFICE FOR A PERIOD OF 3 YEARS  
AND ASSOCIATED FILLING OF LAND  
VARIOUS LOTS IN D.D. 110, KAM TIN, YUEN LONG, N.T.

規劃署  
PLANNING  
DEPARTMENT



參考編號  
REFERENCE No.  
A/YL-KTN/974

圖 PLAN  
A-3





申請地點界線只作識別用 APPLICATION SITE BOUNDARY FOR IDENTIFICATION PURPOSE ONLY

### 實地照片 SITE PHOTOS

本圖於2024年1月4日擬備，所根據的資料為攝於2023年12月12日的實地照片  
PLAN PREPARED ON 4.1.2024  
BASED ON SITE PHOTOS  
TAKEN ON 12.12.2023

擬議臨時辦公室（為期3年）及相關的填土工程  
新界元朗錦田丈量約份第110約多個地段  
PROPOSED TEMPORARY OFFICE FOR A PERIOD OF 3 YEARS  
AND ASSOCIATED FILLING OF LAND  
VARIOUS LOTS IN D.D. 110, KAM TIN, YUEN LONG, N.T.

規劃署  
PLANNING  
DEPARTMENT



參考編號  
REFERENCE No.  
A/YL-KTN/974

圖 PLAN  
A-4